

TO GHAGGAR NALA PS 9 B-(1000 Ø PSC PIPE) TO NUMAYA DAHI STP



- NOTES:**
- 1) GTS BENCH MARK ON YAMUNA BRIDGE LOCATED ON STONE AT EAST END OF 9th PIER FROM SOUTH OF YAMUNA BRIDGE 292.075 Ft. (89.024 m.)
  - 2) ALL LEVELS ARE IN METERS
  - 3) AIR VALVES /SCOUR VALVES /ISOLATION VALVES HAVE NOT BEEN SHOWN IN PLAN FOR CLARITY.

**LEGEND**

PROPOSED SEWER LINE	
PROPOSED RISING MAIN	
ROAD EDGE	
UNDERGROUND LINES	
CULVERT/BRIDGE	
HANDPUMP	
ELECTRIC POLE	
ELECTRIC LINE	
TELEPHONE POLE	
TELEPHONE LINE	
TRANSFORMER	
OFC PILLAR	
KILOMETER POST	
TREE	
HECTOMETER POST	
LAMP POST	
RAILWAY LINE	
NALA	
WATER MAIN	
EXISTING SEWER	
TRENCHLESS TECHNOLOGY	
NALA CROSSING	
RAILWAY LINE CROSSING	
AIR VALVE	
SCOUR VALVE	
ISOLATION VALVE	

**REFERENCE DRAWING:**

INST.					
ELEC.					
MECH.					
STRU.					
CIVL					
REV NO.	0	1	2	3	4

REV.	DESCRIPTION OF REVISIONS	DATE	CHECKED

CHECKED BY: A.Bhatnagar	CHECK	APPROVED BY: D.Sarkar	APPROVE
DRAWN Suresh			
DESIGNED R.Mittal	SCALE H=1:1000 V=1:100		
SURVEYED S.Sharma	DATE 05-01-2005		

**JICA** JAPAN INTERNATIONAL COOPERATION AGENCY

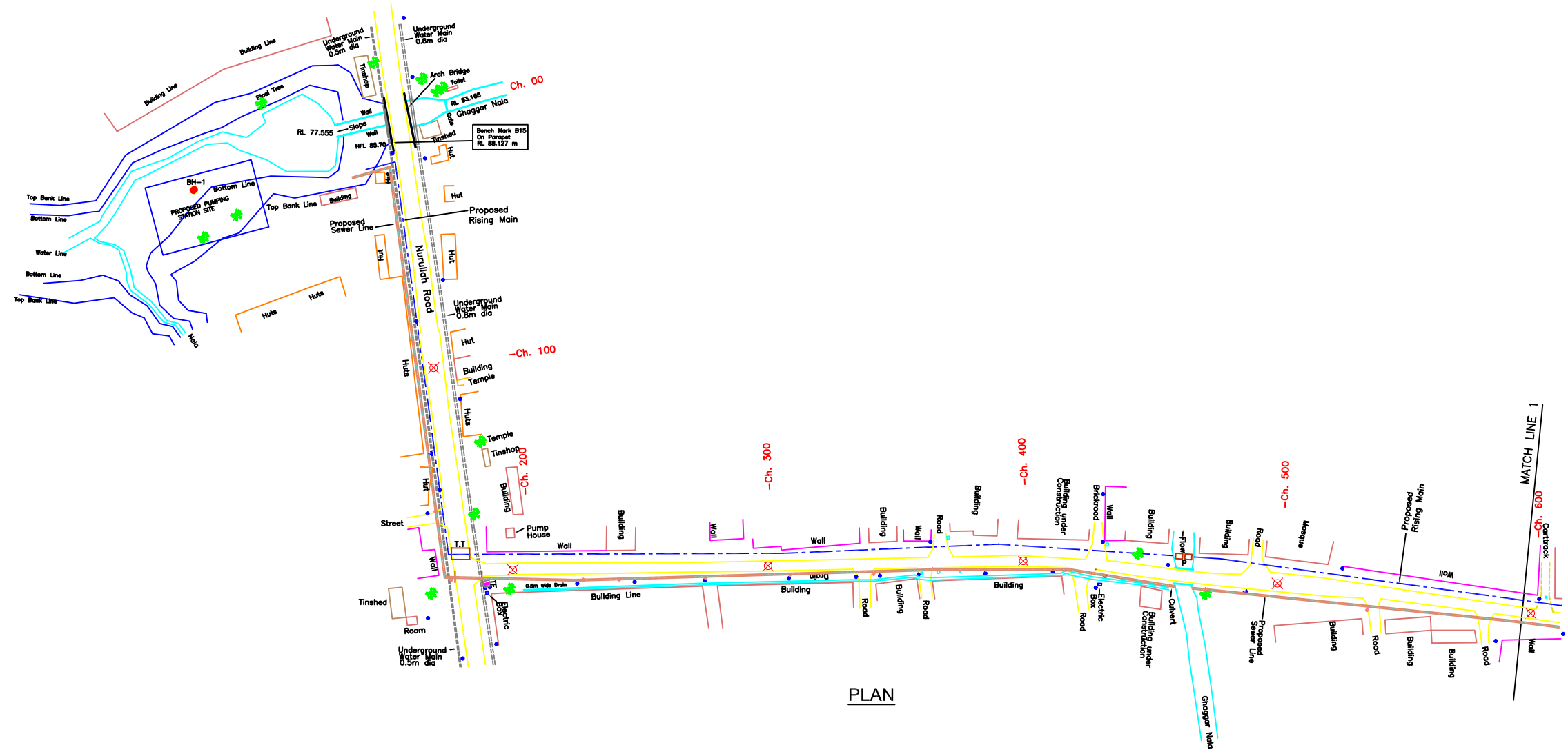
CONSULTANTS:  
 TOKYO ENGINEERING CONSULTANTS CO., LTD.  
 CTI ENGINEERING INTERNATIONAL CO., LTD.  
 STUP CONSULTANTS LTD.

PROJECT:  
 THE STUDY ON WATER QUALITY MANAGEMENT PLAN FOR GANGA RIVER IN THE REPUBLIC OF INDIA  
 FEASIBILITY STUDY FOR ALLAHABAD CITY

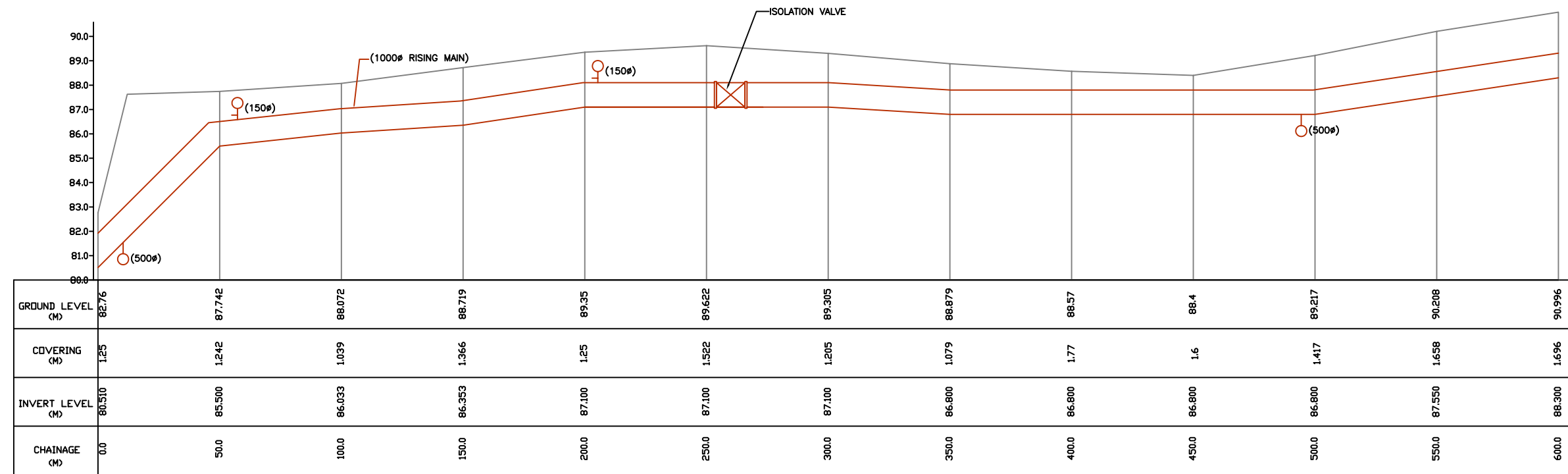
CORRIDOR: District : B  
 Ghaggar Nala PS to Numaya Dahi STP

SHEET CONTENTS: PLAN AND PROFILE (1/13)  
 (Proposed Rising Main)  
 (Ch.00 - 600)

DRAWING NO. ALD-RM-B (GPS-STP)-1	SHT. NO. 41
-------------------------------------	----------------

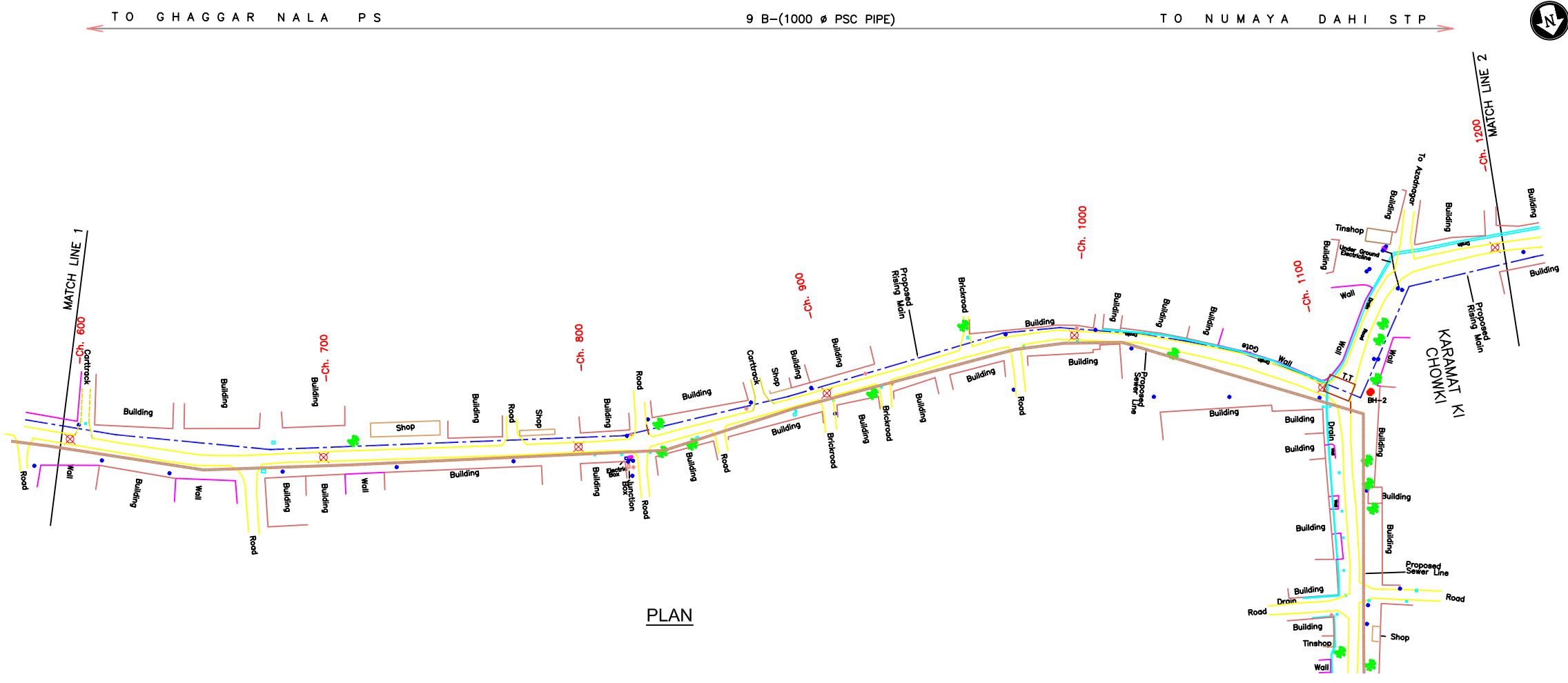


**PLAN**

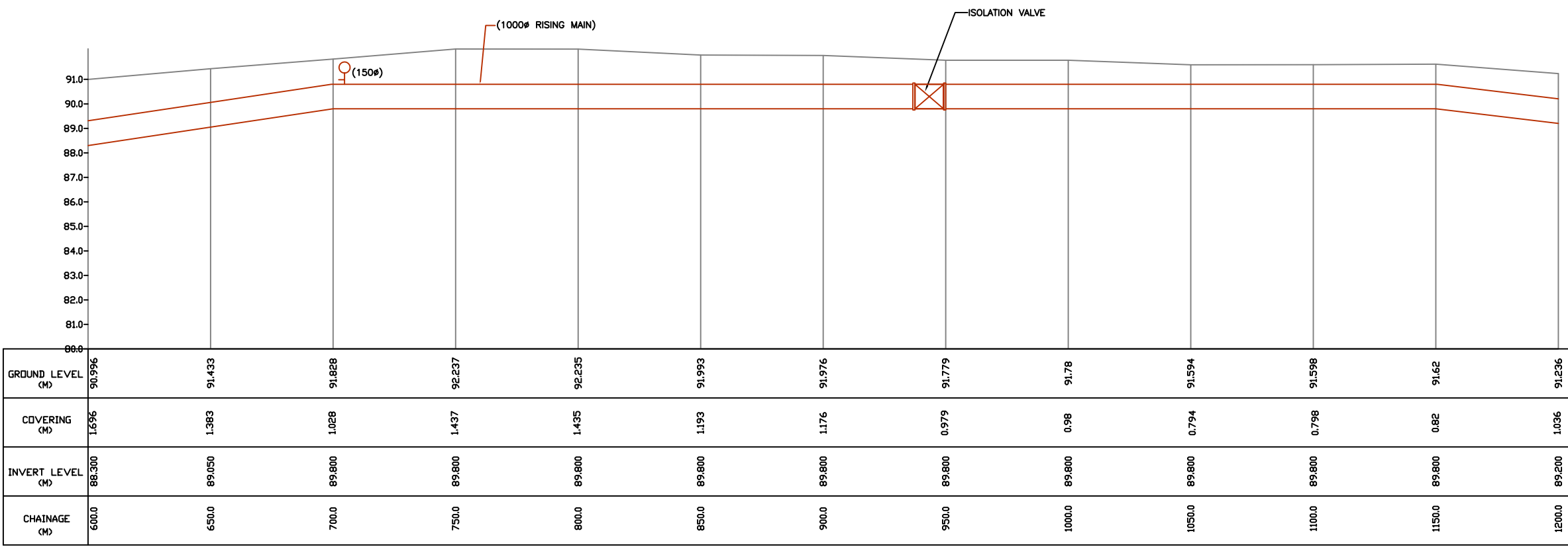


**L-SECTION**

H  
G  
F  
E  
D  
C  
B  
A



PLAN



L-SECTION

- NOTES:**
- GTS BENCH MARK ON YAMUNA BRIDGE LOCATED ON STONE AT EAST END OF 9th PIER FROM SOUTH OF YAMUNA BRIDGE 292.075 Ft. (89.024 m.)
  - ALL LEVELS ARE IN METERS
  - AIR VALVES /SCOUR VALVES /ISOLATION VALVES HAVE NOT BEEN SHOWN IN PLAN FOR CLARITY.

**LEGEND**

PROPOSED SEWER LINE	
PROPOSED RISING MAIN	
ROAD EDGE	
UNDERGROUND LINES	
CULVERT/BRIDGE	
HANDPUMP	
ELECTRIC POLE	
ELECTRIC LINE	
TELEPHONE POLE	
TELEPHONE LINE	
TRANSFORMER	
OFC PILLAR	
KILOMETER POST	
TREE	
HECTOMETER POST	
LAMP POST	
RAILWAY LINE	
NALA	
WATER MAIN	
EXISTING SEWER	
TRENCHLESS TECHNOLOGY	
NALA CROSSING	
RAILWAY LINE CROSSING	
AIR VALVE	
SCOUR VALVE	
ISOLATION VALVE	

**REFERENCE DRAWING:**

INST.					
ELEC.					
MECH.					
STRU.					
CIVL					
REV NO.	0	1	2	3	4

REV.	DESCRIPTION OF REVISIONS	DATE	CHECKED
CHECKED BY:	A.Bhatnagar	APPROVED BY:	D.Sarkar
CHECK		APPROVE	
DRAWN	Surendra	SCALE	H=1:1000 V=1:100
DESIGNED	R.Mittal	DATE	05-01-2005
SURVEYED	S.Sharma		

**JICA** JAPAN INTERNATIONAL COOPERATION AGENCY  
CONSULTANTS:

**PROJECT:**  
THE STUDY ON WATER QUALITY MANAGEMENT PLAN FOR GANGA RIVER IN THE REPUBLIC OF INDIA  
**FEASIBILITY STUDY FOR ALLAHABAD CITY**

**CORRIDOR:** District : B  
Ghaggar Nala PS to Numaya Dahi STP

**SHEET CONTENTS:** PLAN AND PROFILE (2/13)  
(Proposed Rising Main)  
(Ch.600 - 1200)

DRAWING NO.	SHT. NO.
ALD-RM-B (GPS-STP)-2	42

- NOTES:**
- 1) GTS BENCH MARK ON YAMUNA BRIDGE LOCATED ON STONE AT EAST END OF 9th PIER FROM SOUTH OF YAMUNA BRIDGE 292.075 Ft. (89.024 m.)
  - 2) ALL LEVELS ARE IN METERS
  - 3) AIR VALVES /SCOUR VALVES /ISOLATION VALVES HAVE NOT BEEN SHOWN IN PLAN FOR CLARITY.

**LEGEND**

PROPOSED SEWER LINE	
PROPOSED RISING MAIN	
ROAD EDGE	
UNDERGROUND LINES	
CULVERT/BRIDGE	
HANDPUMP	
ELECTRIC POLE	
ELECTRIC LINE	
TELEPHONE POLE	
TELEPHONE LINE	
TRANSFORMER	
OFC PILLAR	
KILOMETER POST	
HECTOMETER POST	
LAMP POST	
RAILWAY LINE	
NALA	
WATER MAIN	
EXISTING SEWER	
TRENCHLESS TECHNOLOGY	
NALA CROSSING	
RAILWAY LINE CROSSING	
AIR VALVE	
SCOUR VALVE	
ISOLATION VALVE	

**REFERENCE DRAWING:**

INST.					
ELEC.					
MECH.					
STRU.					
CIVL					
REV NO.	0	1	2	3	4

REV. DESCRIPTION OF REVISIONS DATE CHECKED

CHECKED BY: A.Bhatnagar CHECK APPROVED BY: D.Sarkar APPROVE

DRAWN: Surendra H=1:1000 V=1:100

DESIGNED: R.Mittal SCALE DATE

SURVEYED: S.Sharma DATE 05-01-2005

**JICA** JAPAN INTERNATIONAL COOPERATION AGENCY

CONSULTANTS:  
 TOKYO ENGINEERING CONSULTANTS CO., LTD.  
 CTI ENGINEERING INTERNATIONAL CO., LTD.  
 STUP CONSULTANTS LTD.

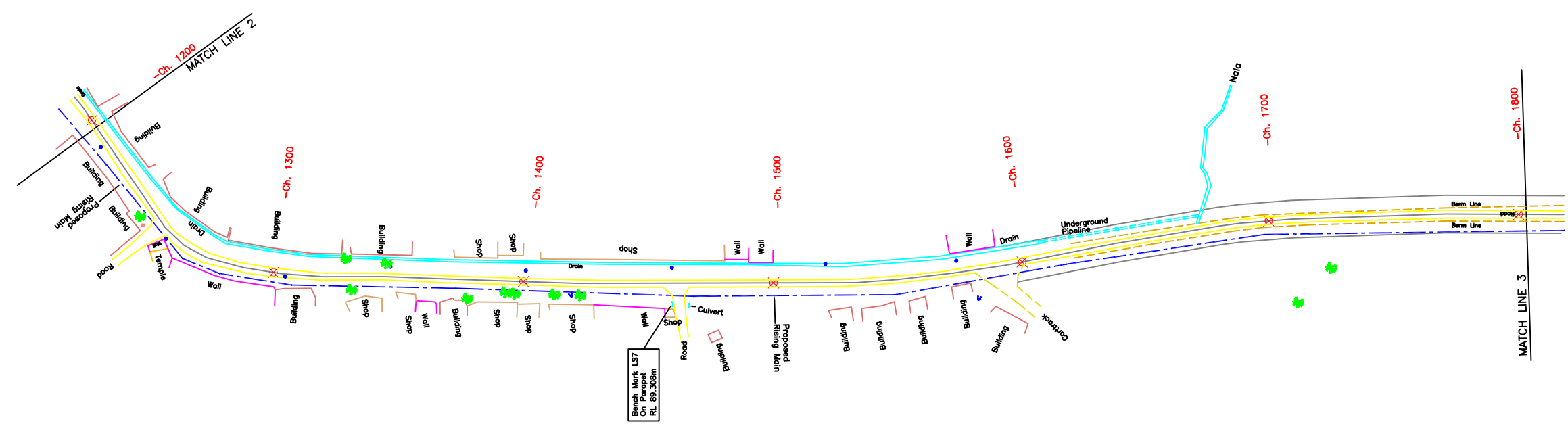
**PROJECT:**  
 THE STUDY ON WATER QUALITY MANAGEMENT PLAN FOR GANGA RIVER IN THE REPUBLIC OF INDIA  
 FEASIBILITY STUDY FOR ALLAHABAD CITY

**CORRIDOR:** District : B  
 Ghaggar Nala PS to Numaya Dahi STP

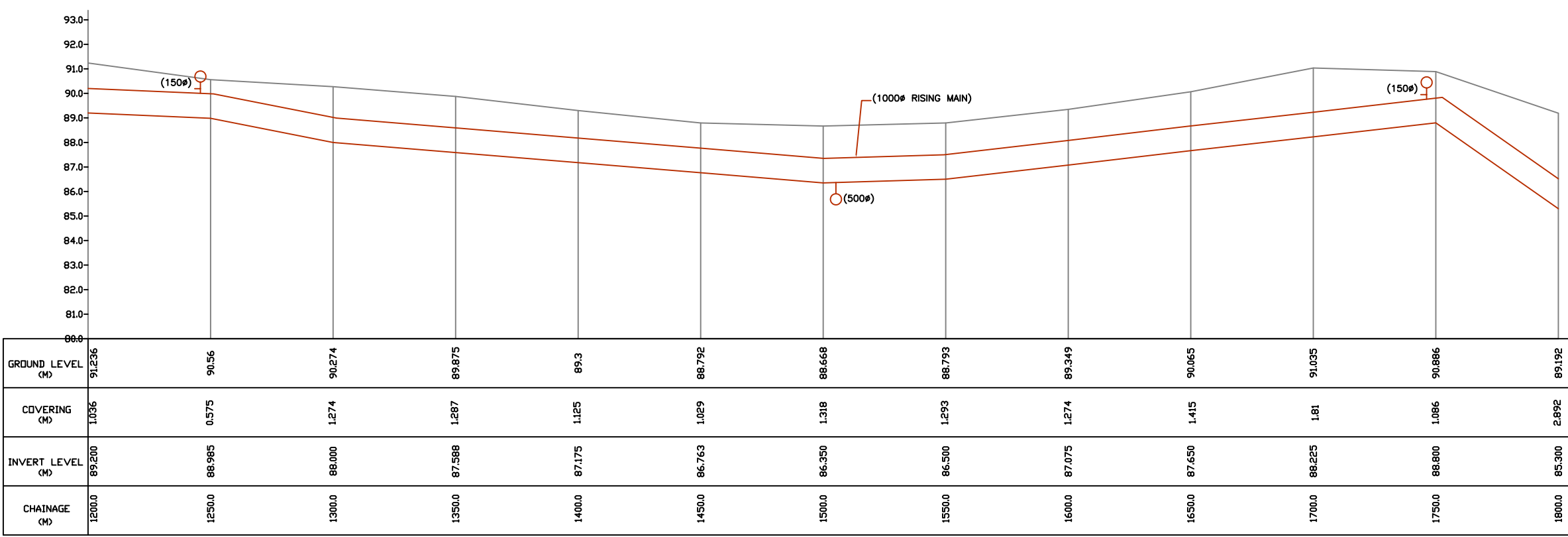
**SHEET CONTENTS:** PLAN AND PROFILE (3/13)  
 (Proposed Rising Main)  
 (Ch.1200 - 1800)

**DRAWING NO.** ALD-RM-B (GPS-STP)-3 **SHT. NO** 43

TO GHAGGAR NALA PS 9 B-(1000 Ø PSC PIPE) TO NUMAYA DAHI STP



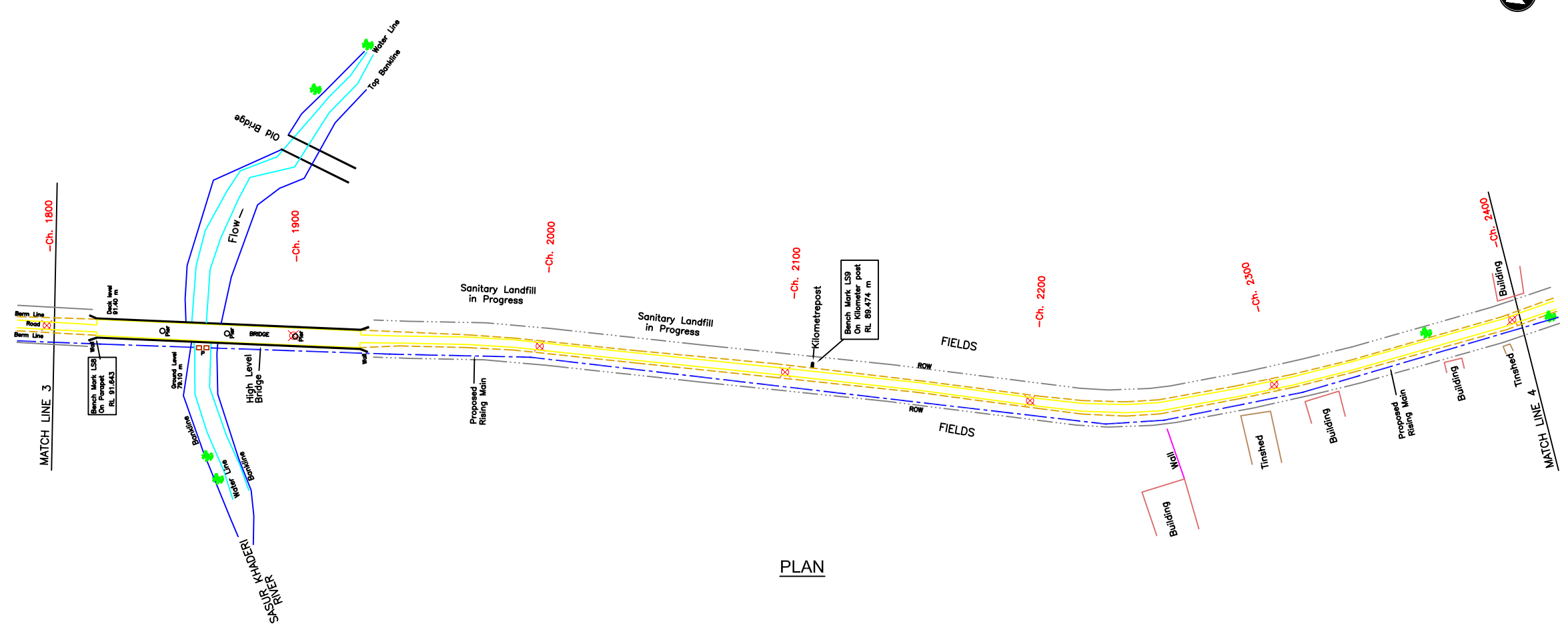
**PLAN**



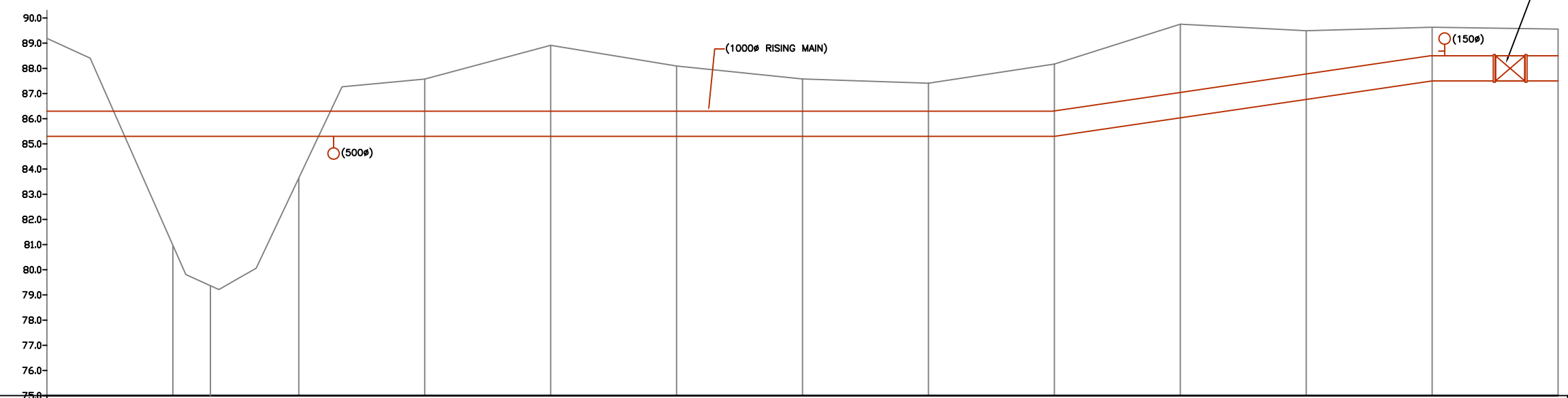
**L-SECTION**

H  
G  
F  
E  
D  
C  
B  
A

TO GHAGGAR NALA PS 9 B-(1000 Ø PSC PIPE) TO NUMAYA DAHI STP



PLAN



L-SECTION

GROUND LEVEL (M)	89.192	82.2	79.10	84.422	87.576	86.916	88.095	87.58	87.409	86.173	89.756	89.304	89.632	89.56
COVERING (M)	2.892	-4.10	-7.2	-1.878	1.276	2.616	1.795	1.28	1.109	1.873	2.723	1.537	1.132	1.06
INVERT LEVEL (M)	85.300	85.300	85.300	85.300	85.300	85.300	85.300	85.300	85.300	85.300	86.033	86.767	87.500	87.500
CHAINAGE (M)	1800.0	1850.0	1865.0	1900.0	1950.0	2000.0	2050.0	2100.0	2150.0	2200.0	2250.0	2300.0	2350.0	2400.0

- NOTES:**
- GTS BENCH MARK ON YAMUNA BRIDGE LOCATED ON STONE AT EAST END OF 9th PIER FROM SOUTH OF YAMUNA BRIDGE 292.075 Ft. (89.024 m.)
  - ALL LEVELS ARE IN METERS
  - AIR VALVES /SCOUR VALVES /ISOLATION VALVES HAVE NOT BEEN SHOWN IN PLAN FOR CLARITY.

**LEGEND**

- PROPOSED SEWER LINE
- PROPOSED RISING MAIN
- ROAD EDGE
- UNDERGROUND LINES
- CULVERT/BRIDGE
- HANDPUMP
- ELECTRIC POLE
- ELECTRIC LINE
- TELEPHONE POLE
- TELEPHONE LINE
- TRANSFORMER
- OFC PILLAR
- KILOMETER POST
- TREE
- HECTOMETER POST
- LAMP POST
- RAILWAY LINE
- NALA
- WATER MAIN
- EXISTING SEWER
- TRENCHLESS TECHNOLOGY
- NALA CROSSING
- RAILWAY LINE CROSSING
- AIR VALVE
- SCOUR VALVE
- ISOLATION VALVE

**REFERENCE DRAWING:**

INST.					
ELEC.					
MECH.					
STRU.					
CIVIL					
REV NO.	0	1	2	3	4

REV. DESCRIPTION OF REVISIONS DATE CHECKED

CHECKED BY: A.Bhatnagar CHECK APPROVED BY: D.Sarkar APPROVE

DESIGNED: R.Mittal SCALE H=1:1000 V=1:100

SURVEYED: S.Sharma DATE 05-01-2005

**JICA** JAPAN INTERNATIONAL COOPERATION AGENCY

CONSULTANTS:  
 TOKYO ENGINEERING CONSULTANTS CO., LTD.  
 CITI ENGINEERING INTERNATIONAL CO., LTD.  
 STUP CONSULTANTS LTD.

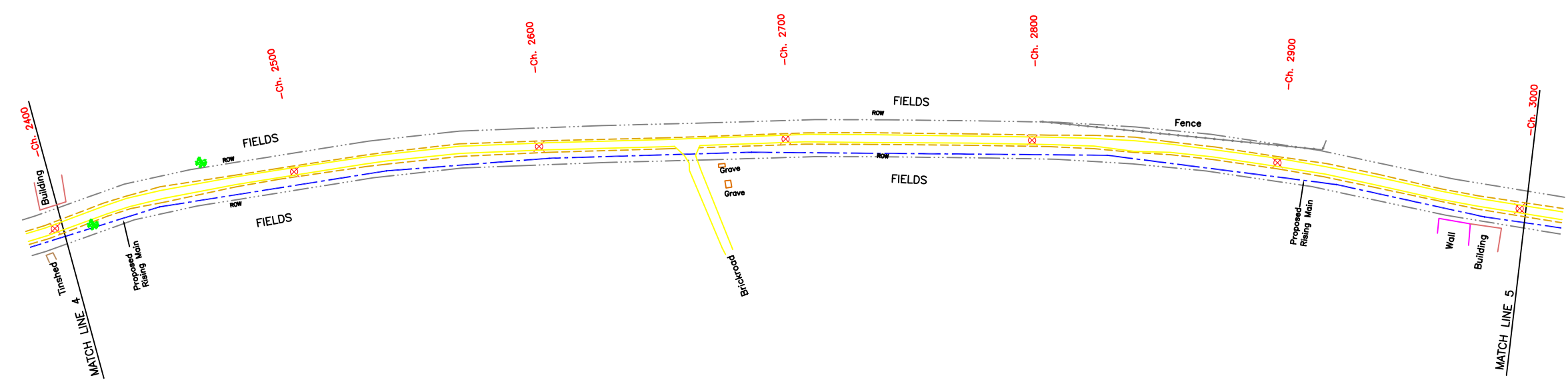
**PROJECT:**  
 THE STUDY ON WATER QUALITY MANAGEMENT PLAN FOR GANGA RIVER IN THE REPUBLIC OF INDIA  
 FEASIBILITY STUDY FOR ALLAHABAD CITY

**CORRIDOR:** District : B  
 Ghaggar Nala PS to Numaya Dahi STP

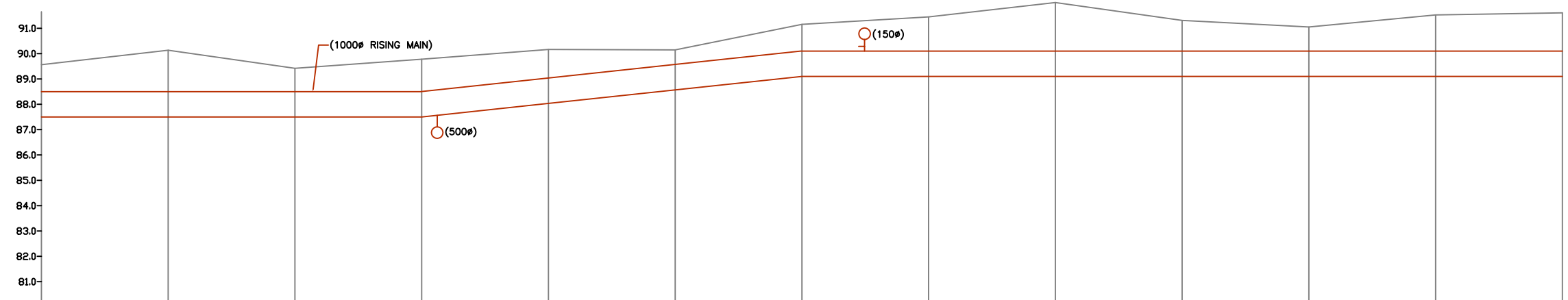
**SHEET CONTENTS:** PLAN AND PROFILE (4/13)  
 (Proposed Rising Main)  
 (Ch.1800 - 2400)

**DRAWING NO.** ALD-RM-B (GPS-STP)-4 **SHT. NO.** 44

TO GHAGGAR NALA PS 9 B-(1000 Ø PSC PIPE) TO NUMAYA DAHI STP



PLAN



GROUND LEVEL (M)	89.36	90.132	89.42	89.776	90.164	90.144	91.154	91.448	92.016	91.31	91.052	91.525	91.606
COVERING (M)	1.06	1.632	0.92	1.276	1.131	0.577	1.054	1.348	1.916	1.21	0.952	1.425	1.506
INVERT LEVEL (M)	87.300	87.500	87.500	87.500	88.033	88.567	89.100	89.100	89.100	89.100	89.100	89.100	89.100
CHAINAGE (M)	2400.0	2450.0	2500.0	2550.0	2600.0	2650.0	2700.0	2750.0	2800.0	2850.0	2900.0	2950.0	3000.0

L-SECTION

- NOTES:**
- GTS BENCH MARK ON YAMUNA BRIDGE LOCATED ON STONE AT EAST END OF 9th PIER FROM SOUTH OF YAMUNA BRIDGE 292.075 FT. (89.024 m.)
  - ALL LEVELS ARE IN METERS
  - AIR VALVES /SCOUR VALVES /ISOLATION VALVES HAVE NOT BEEN SHOWN IN PLAN FOR CLARITY.

**LEGEND**

- PROPOSED SEWER LINE
- PROPOSED RISING MAIN
- ROAD EDGE
- UNDERGROUND LINES
- CULVERT/BRIDGE
- HANDPUMP
- ELECTRIC POLE
- ELECTRIC LINE
- TELEPHONE POLE
- TELEPHONE LINE
- TRANSFORMER
- OFC PILLAR
- KILOMETER POST
- TREE
- HECTOMETER POST
- LAMP POST
- RAILWAY LINE
- NALA
- WATER MAIN
- EXISTING SEWER
- TRENCHLESS TECHNOLOGY
- NALA CROSSING
- RAILWAY LINE CROSSING
- AIR VALVE
- SCOUR VALVE
- ISOLATION VALVE

**REFERENCE DRAWING:**

INST.					
ELEC.					
MECH.					
STRU.					
CIVIL					
REV NO.	0	1	2	3	4

REV.	DESCRIPTION OF REVISIONS	DATE	CHECKED

CHECKED BY:	A.Bhatnagar	CHECK	APPROVED BY:	D.Sarkar	APPROVE
DRAWN	Surendra		DESIGNED	R.Mittal	SCALE
SURVEYED	S.Sharma	DATE			H=1:1000 V=1:100

**JICA** JAPAN INTERNATIONAL COOPERATION AGENCY

CONSULTANTS:  
 TOKYO ENGINEERING CONSULTANTS CO., LTD.  
 CTI ENGINEERING INTERNATIONAL CO., LTD.  
 STUP CONSULTANTS LTD.

PROJECT:  
 THE STUDY ON WATER QUALITY MANAGEMENT PLAN FOR GANGA RIVER IN THE REPUBLIC OF INDIA  
 FEASIBILITY STUDY FOR ALLAHABAD CITY

CORRIDOR: District : B  
 Ghaggar Nala PS to Numaya Dahi STP

SHEET CONTENTS: PLAN AND PROFILE (5/13)  
 (Proposed Rising Main)  
 (Ch.2400 - 3000)

12 11 10 9 8 7 6 5 4 3 2 1

TO GHAGGAR NALA PS 9 B-(1000 Ø PSC PIPE) TO NUMAYA DAHI STP

- NOTES:**
- GTS BENCH MARK ON YAMUNA BRIDGE LOCATED ON STONE AT EAST END OF 9th PIER FROM SOUTH OF YAMUNA BRIDGE 292.075 Ft. (89.024 m.)
  - ALL LEVELS ARE IN METERS
  - AIR VALVES /SCOUR VALVES /ISOLATION VALVES HAVE NOT BEEN SHOWN IN PLAN FOR CLARITY.

**LEGEND**

PROPOSED SEWER LINE	
PROPOSED RISING MAIN	
ROAD EDGE	
UNDERGROUND LINES	
CULVERT/BRIDGE	
HANDPUMP	
ELECTRIC POLE	
ELECTRIC LINE	
TELEPHONE POLE	
TELEPHONE LINE	
TRANSFORMER	
OFC PILLAR	
KILOMETER POST	
HECTOMETER POST	
LAMP POST	
RAILWAY LINE	
NALA	
WATER MAIN	
EXISTING SEWER	
TRENCHLESS TECHNOLOGY	
NALA CROSSING	
RAILWAY LINE CROSSING	
AIR VALVE	
SCOUR VALVE	
ISOLATION VALVE	

**REFERENCE DRAWING:**

INST.					
ELEC.					
MECH.					
STRU.					
CIVL					
REV NO.	0	1	2	3	4

REV.	DESCRIPTION OF REVISIONS	DATE	CHECKED
CHECKED BY: A.Bhatnagar		APPROVED BY: D.Sarkar	
DRAWN	Surendra	APPROVE	
DESIGNED	R.Mittal	SCALE	H=1:1000 V=1:100
SURVEYED	S.Sharma	DATE	05-01-2005

**JICA** JAPAN INTERNATIONAL COOPERATION AGENCY

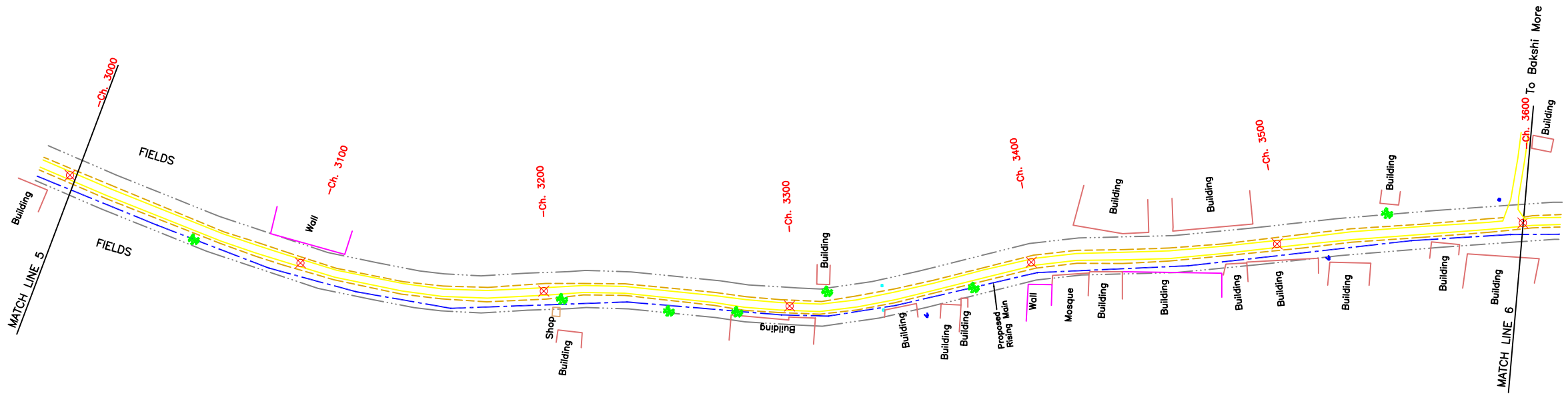
CONSULTANTS:  
 TOKYO ENGINEERING CONSULTANTS CO., LTD.  
 CTI ENGINEERING INTERNATIONAL CO., LTD.  
 STUP CONSULTANTS LTD.

**PROJECT:**  
 THE STUDY ON WATER QUALITY MANAGEMENT PLAN FOR GANGA RIVER IN THE REPUBLIC OF INDIA  
 FEASIBILITY STUDY FOR ALLAHABAD CITY

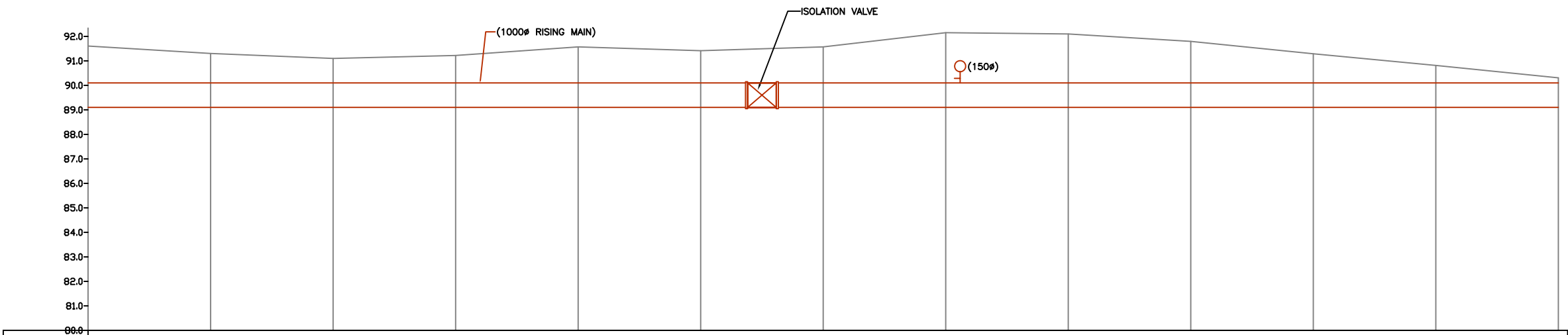
**CORRIDOR:** District : B  
 Ghaggar Nala PS to Numaya Dahi STP

**SHEET CONTENTS:** PLAN AND PROFILE (6/13)  
 (Proposed Rising Main)  
 (Ch.3000 - 3600)

**DRAWING NO.** ALD-RM-B (GPS-STP)-6 **SHT. NO.** 46



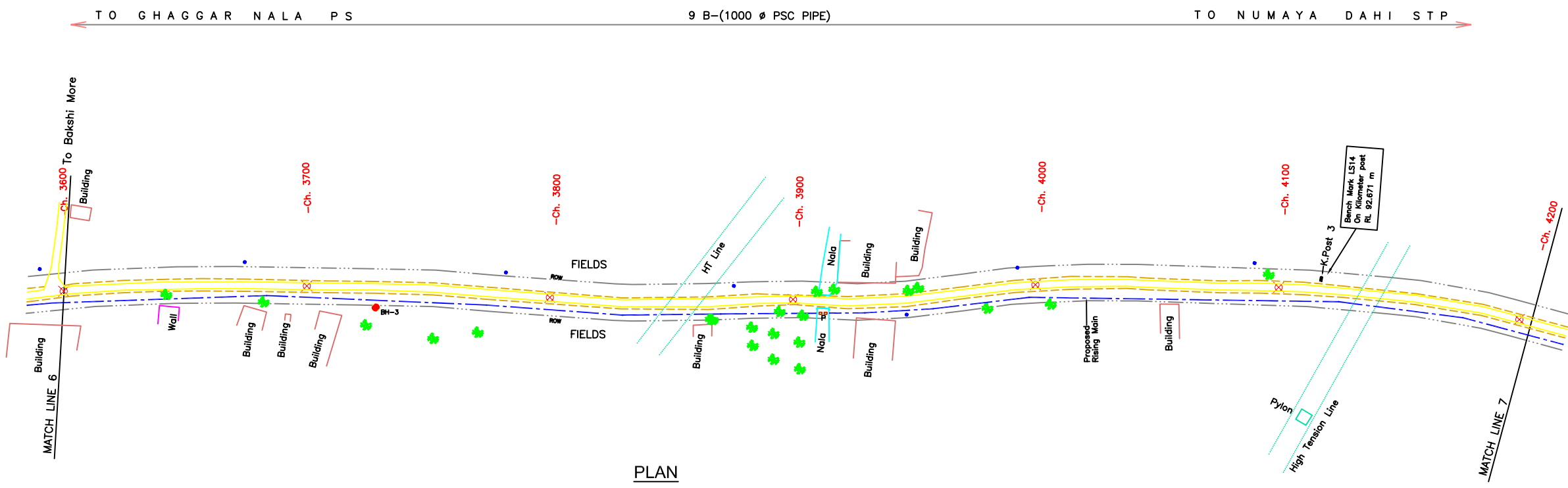
**PLAN**



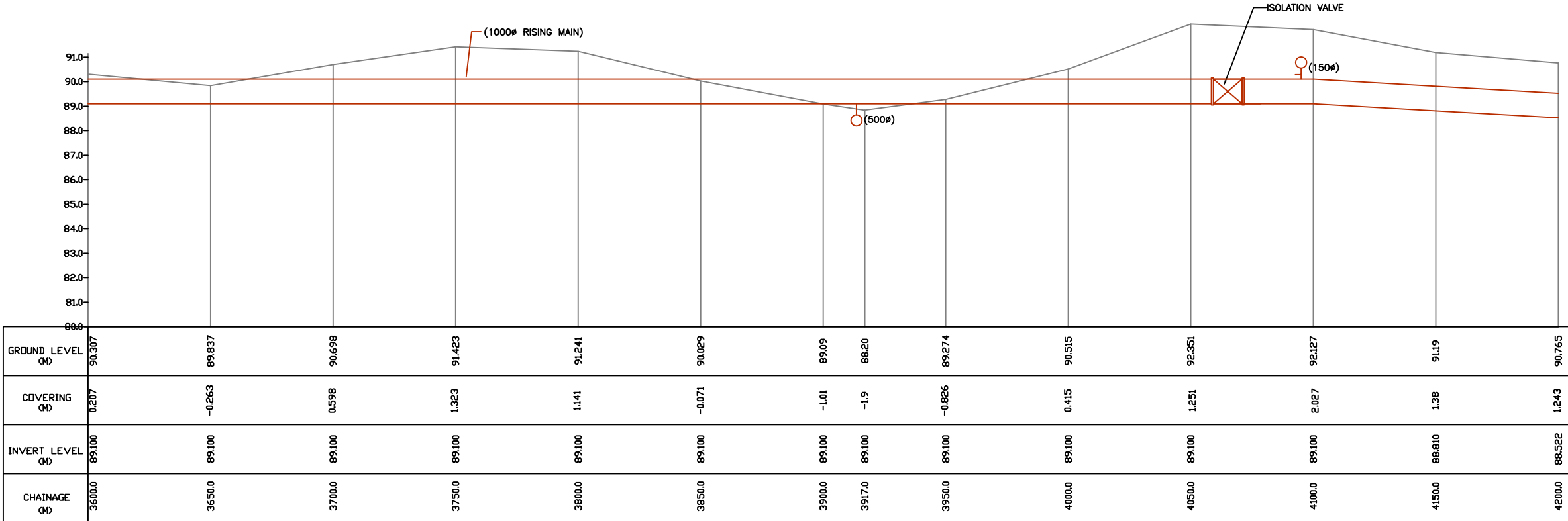
**L-SECTION**

GROUND LEVEL (M)	91.606	91.302	91.099	91.221	91.369	91.414	91.572	92.149	92.098	91.795	91.289	90.815	90.307
COVERING (M)	1.506	1.202	0.999	1.121	1.469	1.314	1.472	2.049	1.998	1.695	1.189	0.715	0.207
INVERT LEVEL (M)	89.100	89.100	89.100	89.100	89.100	89.100	89.100	89.100	89.100	89.100	89.100	89.100	89.100
CHAINAGE (M)	3000.0	3050.0	3100.0	3150.0	3200.0	3250.0	3300.0	3350.0	3400.0	3450.0	3500.0	3550.0	3600.0

12 11 10 9 8 7 6 5 4 3 2 1



PLAN



L-SECTION

- NOTES:**
- GTS BENCH MARK ON YAMUNA BRIDGE LOCATED ON STONE AT EAST END OF 9th PIER FROM SOUTH OF YAMUNA BRIDGE 292.075 Ft. (89.024 m.)
  - ALL LEVELS ARE IN METERS
  - AIR VALVES /SCOUR VALVES /ISOLATION VALVES HAVE NOT BEEN SHOWN IN PLAN FOR CLARITY.

**LEGEND**

PROPOSED SEWER LINE	
PROPOSED RISING MAIN	
ROAD EDGE	
UNDERGROUND LINES	
CULVERT/BRIDGE	
HANDPUMP	
ELECTRIC POLE	
ELECTRIC LINE	
TELEPHONE POLE	
TELEPHONE LINE	
TRANSFORMER	
OFC PILLAR	
KILOMETER POST	
TREE	
HECTOMETER POST	
LAMP POST	
RAILWAY LINE	
NALA	
WATER MAIN	
EXISTING SEWER	
TRENCHLESS TECHNOLOGY	
NALA CROSSING	
RAILWAY LINE CROSSING	
AIR VALVE	
SCOUR VALVE	
ISOLATION VALVE	

**REFERENCE DRAWING:**

INST.					
ELEC.					
MECH.					
STRU.					
CIVIL					
REV NO.	0	1	2	3	4

REV.	DESCRIPTION OF REVISIONS	DATE	CHECKED
CHECKED BY:	A.Bhatnagar	APPROVED BY:	D.Sarkar
DRAWN	Surendra	SCALE	H=1:1000 V=1:100
DESIGNED	R.Mittal	DATE	05-01-2005
SURVEYED	S.Sharma		

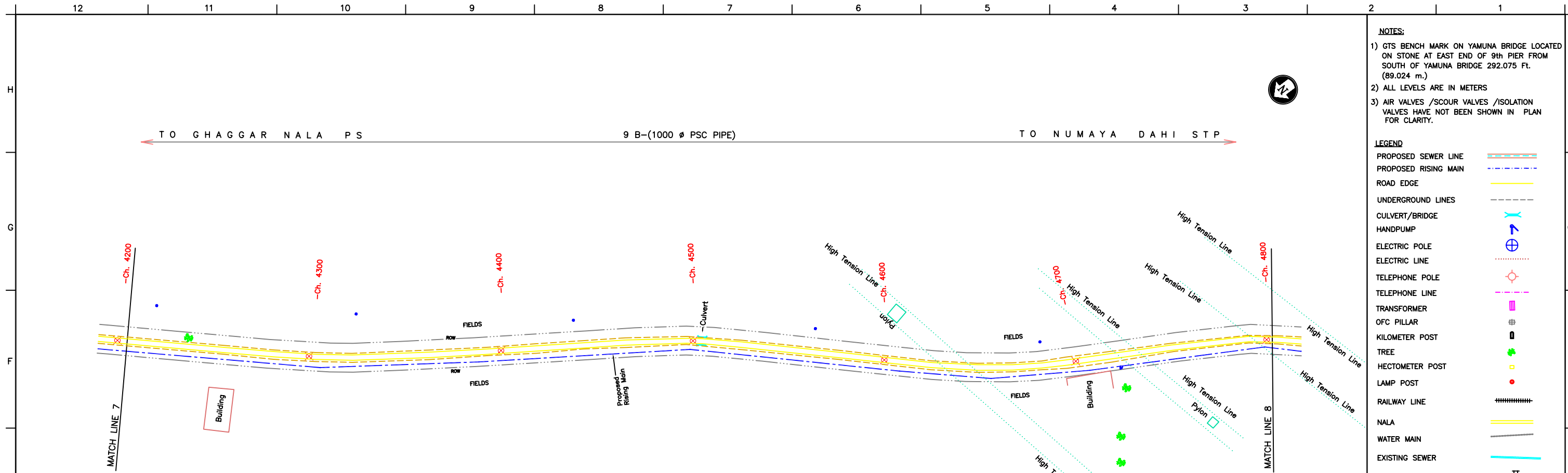
**JICA** JAPAN INTERNATIONAL COOPERATION AGENCY

CONSULTANTS:  
 TOKYO ENGINEERING CONSULTANTS CO., LTD.  
 CTI ENGINEERING INTERNATIONAL CO., LTD.  
 STUP CONSULTANTS LTD.

**PROJECT:**  
 THE STUDY ON WATER QUALITY MANAGEMENT PLAN FOR GANGA RIVER IN THE REPUBLIC OF INDIA  
 FEASIBILITY STUDY FOR ALLAHABAD CITY

**CORRIDOR:** District : B  
 Ghaggar Nala PS to Numaya Dahi STP

**SHEET CONTENTS:** PLAN AND PROFILE (7/13)  
 (Proposed Rising Main)  
 (Ch.3600 - 4200)



PLAN



L-SECTION

GROUND LEVEL (M)	90.765	90.142	89.372	89.023	88.826	88.374	88.365	89.033	90.613	92.093	92.704	92.595	92.459
COVERING (M)	1.243	0.909	0.428	0.367	0.459	0.296	0.576	0.533	1.813	1.993	1.304	1.195	1.059
INVERT LEVEL (M)	88.522	88.233	87.944	87.656	87.367	87.078	86.789	86.500	87.800	89.100	90.400	90.400	90.400
CHAINAGE (M)	4200.0	4250.0	4300.0	4350.0	4400.0	4450.0	4500.0	4550.0	4600.0	4650.0	4700.0	4750.0	4800.0

- NOTES:**
- GTS BENCH MARK ON YAMUNA BRIDGE LOCATED ON STONE AT EAST END OF 9th PIER FROM SOUTH OF YAMUNA BRIDGE 292.075 Ft. (89.024 m.)
  - ALL LEVELS ARE IN METERS
  - AIR VALVES /SCOUR VALVES /ISOLATION VALVES HAVE NOT BEEN SHOWN IN PLAN FOR CLARITY.

**LEGEND**

PROPOSED SEWER LINE	
PROPOSED RISING MAIN	
ROAD EDGE	
UNDERGROUND LINES	
CULVERT/BRIDGE	
HANDPUMP	
ELECTRIC POLE	
ELECTRIC LINE	
TELEPHONE POLE	
TELEPHONE LINE	
TRANSFORMER	
OFC PILLAR	
KILOMETER POST	
TREE	
HECTOMETER POST	
LAMP POST	
RAILWAY LINE	
NALA	
WATER MAIN	
EXISTING SEWER	
TRENCHLESS TECHNOLOGY	
NALA CROSSING	
RAILWAY LINE CROSSING	
AIR VALVE	
SCOUR VALVE	
ISOLATION VALVE	

**REFERENCE DRAWING:**

INST.					
ELEC.					
MECH.					
STRU.					
CIVIL					
REV NO.	0	1	2	3	4

REV.	DESCRIPTION OF REVISIONS	DATE	CHECKED

CHECKED BY: A.Bhatnagar	CHECK	APPROVED BY: D.Sarkar	APPROVE
DRAWN Suresh	DESIGNED R.Mittal	SURVEYED S.Sharma	SCALE H=1:1000 V=1:100
DATE		05-01-2005	

**JICA** JAPAN INTERNATIONAL COOPERATION AGENCY

CONSULTANTS:

**PROJECT:**  
 THE STUDY ON WATER QUALITY MANAGEMENT PLAN FOR GANGA RIVER IN THE REPUBLIC OF INDIA  
 FEASIBILITY STUDY FOR ALLAHABAD CITY

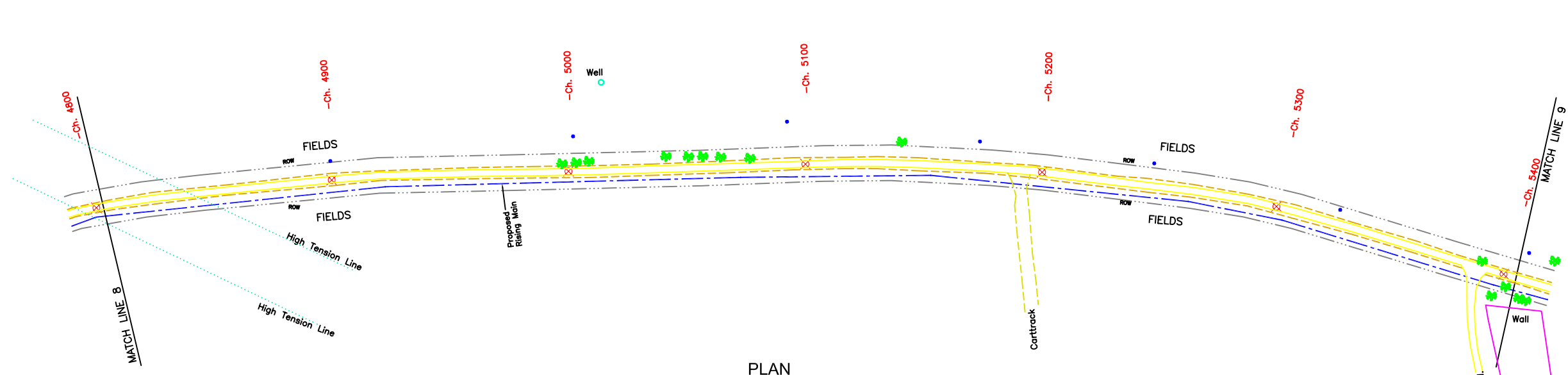
**CORRIDOR:** District : B  
 Ghaggar Nala PS to Numaya Dahi STP

**SHEET CONTENTS:** PLAN AND PROFILE (8/13)  
 (Proposed Rising Main)  
 (Ch.4200 - 4800)

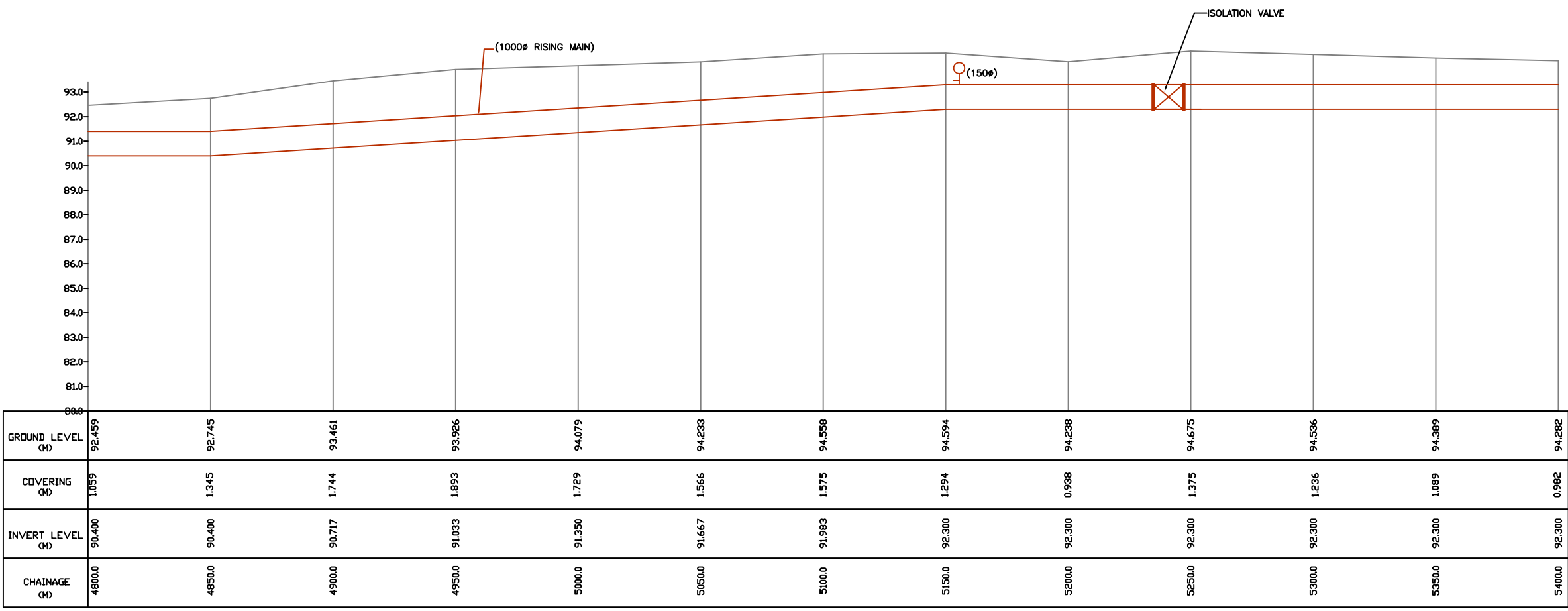
DRAWING NO. ALD-RM-B (GPS-STP)-8	SHT. NO. 48
-------------------------------------	----------------



TO GHAGGAR NALA PS 9 B-(1000 Ø PSC PIPE) TO NUMAYA DAHI STP



PLAN



L-SECTION

- NOTES:**
- GTS BENCH MARK ON YAMUNA BRIDGE LOCATED ON STONE AT EAST END OF 9th PIER FROM SOUTH OF YAMUNA BRIDGE 292.075 Ft. (89.024 m.)
  - ALL LEVELS ARE IN METERS
  - AIR VALVES /SCOUR VALVES /ISOLATION VALVES HAVE NOT BEEN SHOWN IN PLAN FOR CLARITY.

**LEGEND**

PROPOSED SEWER LINE	
PROPOSED RISING MAIN	
ROAD EDGE	
UNDERGROUND LINES	
CULVERT/BRIDGE	
HANDPUMP	
ELECTRIC POLE	
ELECTRIC LINE	
TELEPHONE POLE	
TELEPHONE LINE	
TRANSFORMER	
OFC PILLAR	
KILOMETER POST	
TREE	
HECTOMETER POST	
LAMP POST	
RAILWAY LINE	
NALA	
WATER MAIN	
EXISTING SEWER	
TRENCHLESS TECHNOLOGY	
NALA CROSSING	
RAILWAY LINE CROSSING	
AIR VALVE	
SCOUR VALVE	
ISOLATION VALVE	

**REFERENCE DRAWING:**

INST.					
ELEC.					
MECH.					
STRU.					
CIVIL					
REV NO.	0	1	2	3	4

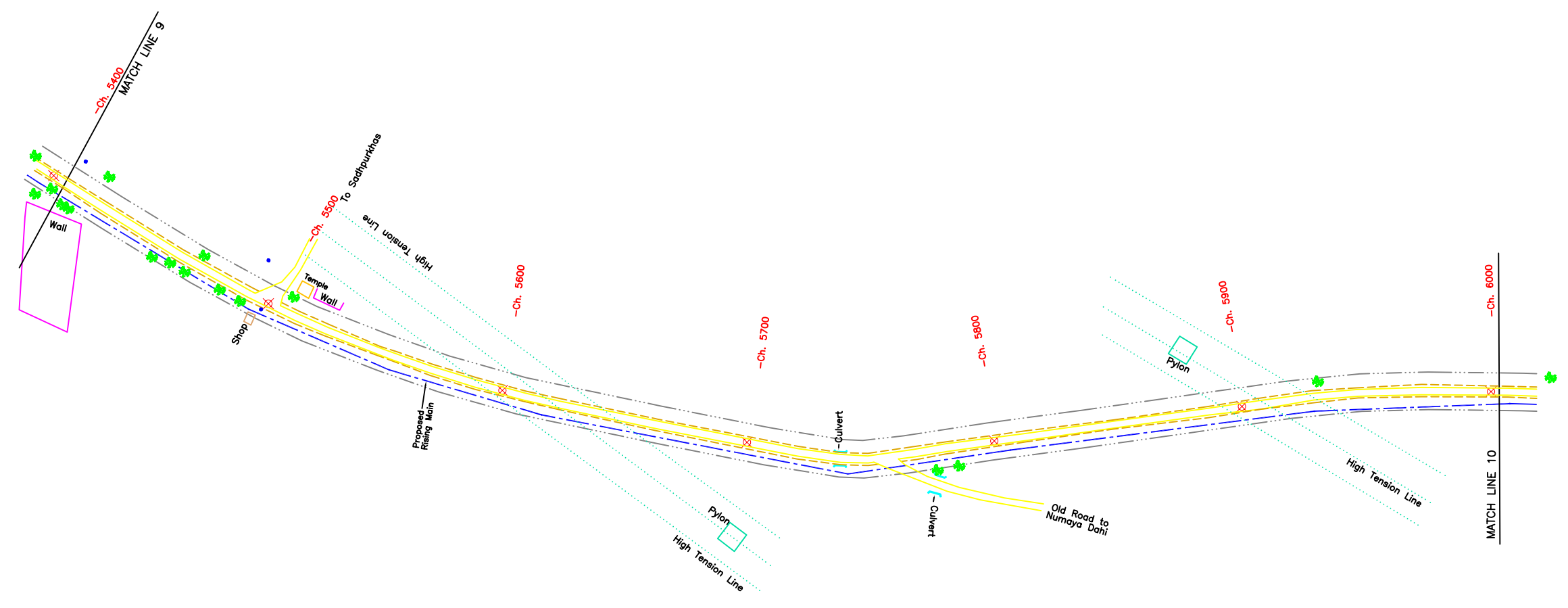
REV.	DESCRIPTION OF REVISIONS	DATE	CHECKED
CHECKED BY:	A.Bhatnagar	APPROVED BY:	D.Sarkar
CHECK		APPROVE	
DRAWN	Surendra	SCALE	H=1:1000 V=1:100
DESIGNED	R.Mittal	DATE	05-01-2005
SURVEYED	S.Sharma		

**JICA** JAPAN INTERNATIONAL COOPERATION AGENCY  
 CONSULTANTS:  
 TOKYO ENGINEERING CONSULTANTS CO., LTD.  
 CTI ENGINEERING INTERNATIONAL CO., LTD.  
 STUP CONSULTANTS LTD.

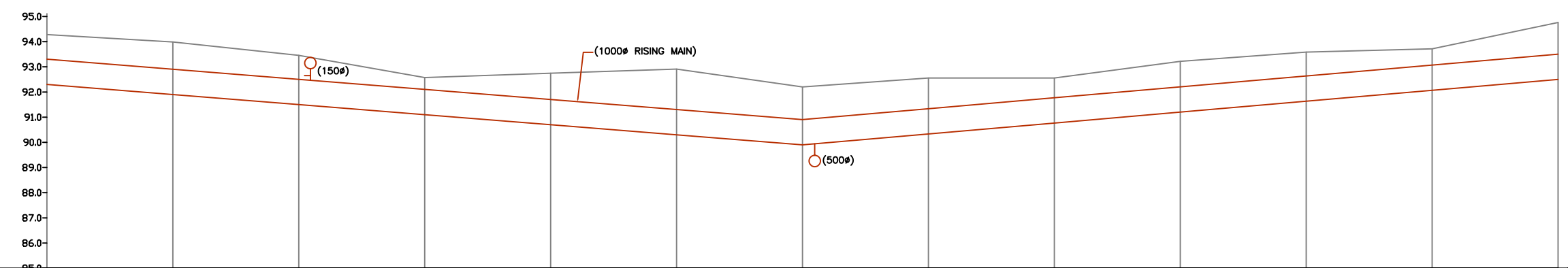
**PROJECT:**  
 THE STUDY ON WATER QUALITY MANAGEMENT PLAN FOR GANGA RIVER IN THE REPUBLIC OF INDIA  
 FEASIBILITY STUDY FOR ALLAHABAD CITY  
**CORRIDOR:** District : B  
 Ghaggar Nala PS to Numaya Dahi STP  
**SHEET CONTENTS:** PLAN AND PROFILE (9/13)  
 (Proposed Rising Main)  
 (Ch.4800 - 5400)

**DRAWING NO.** ALD-RM-B (GPS-STP)-9 **SHT. NO.** 49

TO GHAGGAR NALA PS 9 B-(1000 Ø PSC PIPE) TO NUMAYA DAHI STP



PLAN



GROUND LEVEL (M)	94.282	93.986	93.456	92.574	92.744	92.913	92.199	92.556	92.556	93.219	93.584	93.715	94.762
COVERING (M)	0.982	1.086	0.956	0.474	1.044	1.613	1.299	1.223	0.789	1.019	0.951	0.648	1.262
INVERT LEVEL (M)	92.300	91.900	91.500	91.100	90.700	90.300	89.900	90.333	90.767	91.200	91.633	92.067	92.500
CHAINAGE (M)	5400.0	5450.0	5500.0	5550.0	5600.0	5650.0	5700.0	5750.0	5800.0	5850.0	5900.0	5950.0	6000.0

L-SECTION

- NOTES:**
- GTS BENCH MARK ON YAMUNA BRIDGE LOCATED ON STONE AT EAST END OF 9th PIER FROM SOUTH OF YAMUNA BRIDGE 292.075 Ft. (89.024 m.)
  - ALL LEVELS ARE IN METERS
  - AIR VALVES /SCOUR VALVES /ISOLATION VALVES HAVE NOT BEEN SHOWN IN PLAN FOR CLARITY.

**LEGEND**

PROPOSED SEWER LINE	
PROPOSED RISING MAIN	
ROAD EDGE	
UNDERGROUND LINES	
CULVERT/BRIDGE	
HANDPUMP	
ELECTRIC POLE	
ELECTRIC LINE	
TELEPHONE POLE	
TELEPHONE LINE	
TRANSFORMER	
OFC PILLAR	
KILOMETER POST	
HECTOMETER POST	
LAMP POST	
RAILWAY LINE	
NALA	
WATER MAIN	
EXISTING SEWER	
TRENCHLESS TECHNOLOGY	
NALA CROSSING	
RAILWAY LINE CROSSING	
AIR VALVE	
SCOUR VALVE	
ISOLATION VALVE	

**REFERENCE DRAWING:**

INST.					
ELEC.					
MECH.					
STRU.					
CIVIL					
REV NO.	0	1	2	3	4

REV.	DESCRIPTION OF REVISIONS	DATE	CHECKED

CHECKED BY:	A.Bhatnagar	APPROVED BY:	D.Sarkar
CHECK		APPROVE	
DRAWN	Surendra	SCALE	H=1:1000 V=1:100
DESIGNED	R.Mittal	DATE	05-01-2005
SURVEYED	S.Sharma		

**JICA** JAPAN INTERNATIONAL COOPERATION AGENCY

CONSULTANTS:

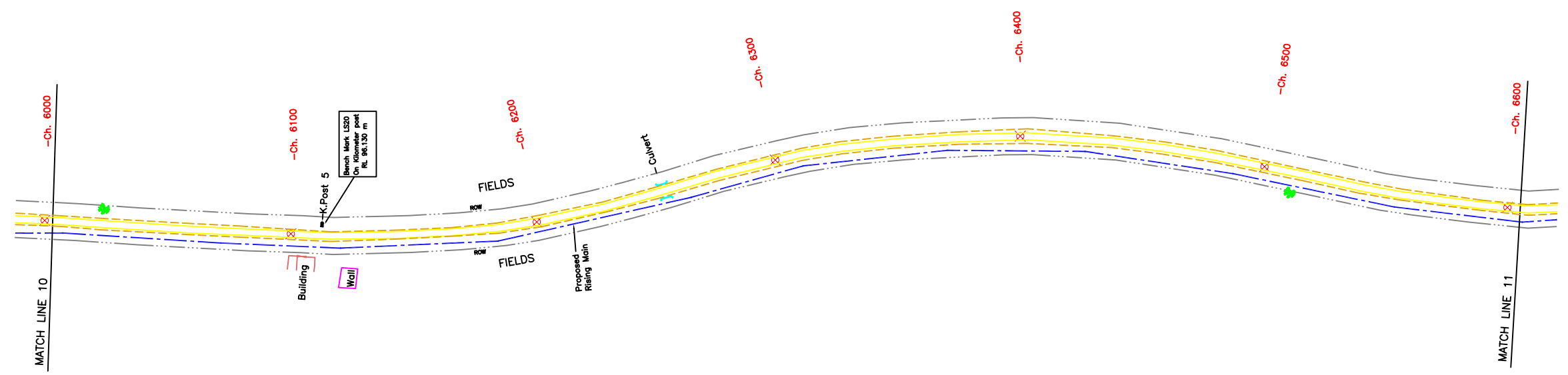
PROJECT:  
 THE STUDY ON WATER QUALITY MANAGEMENT PLAN FOR GANGA RIVER IN THE REPUBLIC OF INDIA  
 FEASIBILITY STUDY FOR ALLAHABAD CITY

CORRIDOR: District : B  
 Ghaggar Nala PS to Numaya Dahi STP

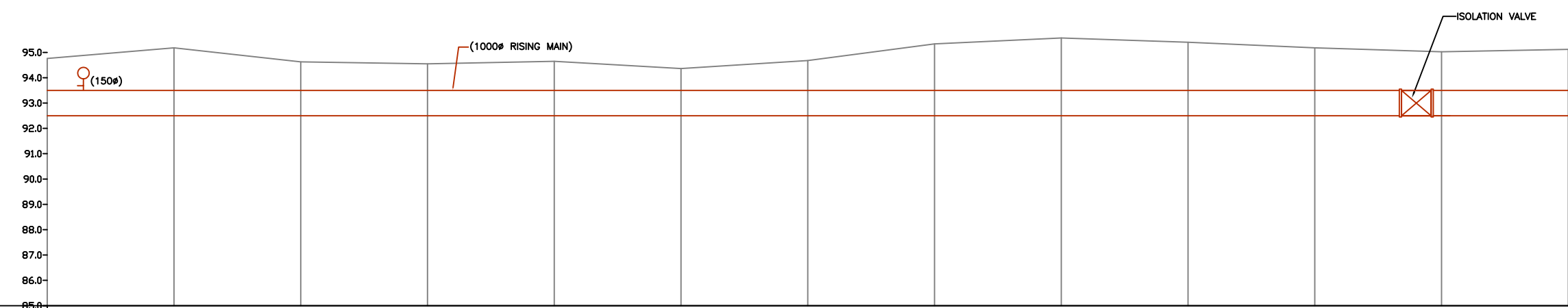
SHEET CONTENTS: PLAN AND PROFILE (10/13)  
 (Proposed Rising Main)  
 (Ch.5400 - 6000)

DRAWING NO.	ALD-RM-B (GPS-STP)-10	SHT. NO.	50
-------------	-----------------------	----------	----

TO GHAGGAR NALA PS 9 B-(1000  $\phi$  PSC PIPE) TO NUMAYA DAHI STP



PLAN



L-SECTION

GROUND LEVEL (M)	94.762	95.179	94.627	94.55	94.648	94.361	94.678	95.338	95.569	95.4	95.181	95.024	95.12
COVERING (M)	1.262	1.679	1.127	1.05	1.148	0.861	1.178	1.838	2.069	1.900	1.681	1.524	1.62
INVERT LEVEL (M)	92.500	92.500	92.500	92.500	92.500	92.500	92.500	92.500	92.500	92.500	92.500	92.500	92.500
CHAINAGE (M)	6000.0	6050.0	6100.0	6150.0	6200.0	6250.0	6300.0	6350.0	6400.0	6450.0	6500.0	6550.0	6600.0

- NOTES:**
- GTS BENCH MARK ON YAMUNA BRIDGE LOCATED ON STONE AT EAST END OF 9th PIER FROM SOUTH OF YAMUNA BRIDGE 292.075 Ft. (89.024 m.)
  - ALL LEVELS ARE IN METERS
  - AIR VALVES /SCOUR VALVES /ISOLATION VALVES HAVE NOT BEEN SHOWN IN PLAN FOR CLARITY.

**LEGEND**

PROPOSED SEWER LINE	
PROPOSED RISING MAIN	
ROAD EDGE	
UNDERGROUND LINES	
CULVERT/BRIDGE	
HANDPUMP	
ELECTRIC POLE	
ELECTRIC LINE	
TELEPHONE POLE	
TELEPHONE LINE	
TRANSFORMER	
OFC PILLAR	
KILOMETER POST	
TREE	
HECTOMETER POST	
LAMP POST	
RAILWAY LINE	
NALA	
WATER MAIN	
EXISTING SEWER	
TRENCHLESS TECHNOLOGY	
NALA CROSSING	
RAILWAY LINE CROSSING	
AIR VALVE	
SCOUR VALVE	
ISOLATION VALVE	

**REFERENCE DRAWING:**

INST.					
ELEC.					
MECH.					
STRU.					
CIVIL					
REV NO.	0	1	2	3	4

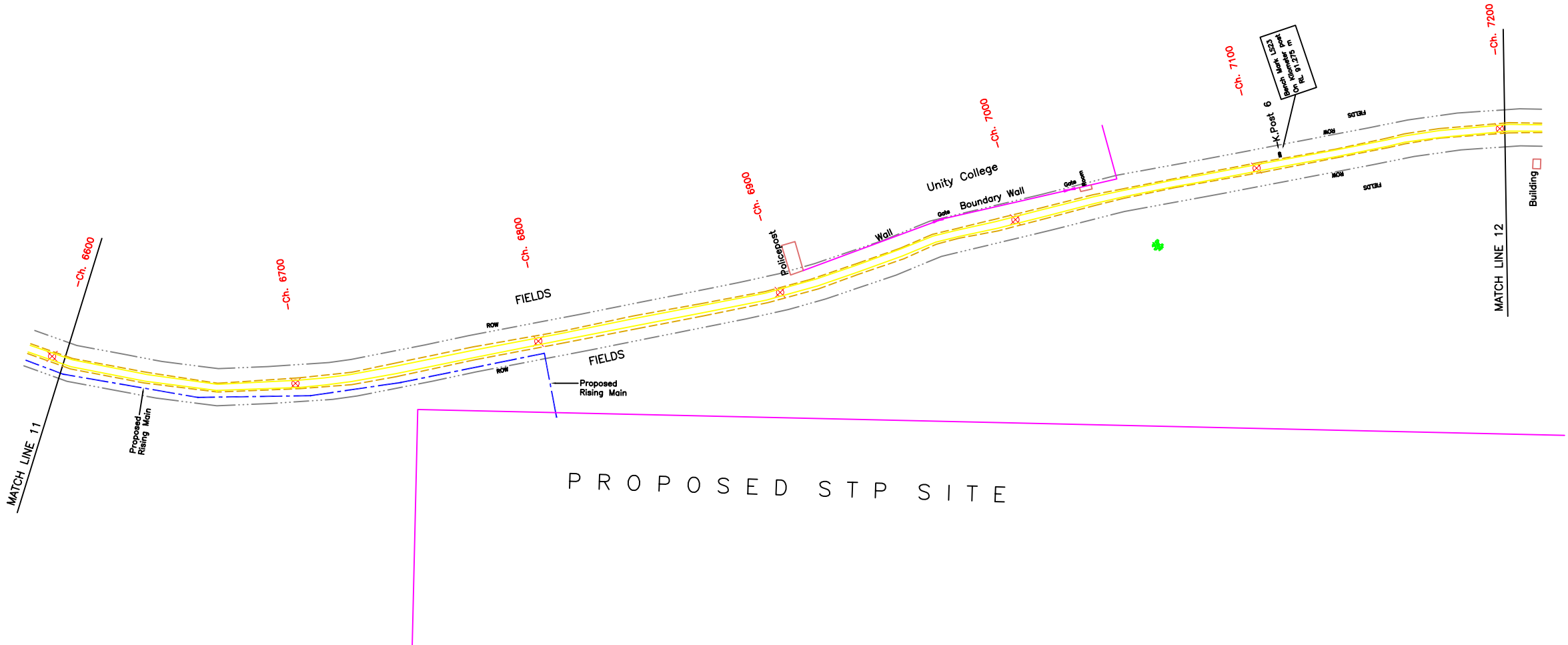
REV.	DESCRIPTION OF REVISIONS	DATE	CHECKED
CHECKED BY:	A.Bhatnagar	APPROVED BY:	D.Sarkar
DRAWN	Surendra	CHECK	APPROVE
DESIGNED	R.Mittal	SCALE	H=1:1000 V=1:100
SURVEYED	S.Sharma	DATE	05-01-2005

**JICA** JAPAN INTERNATIONAL COOPERATION AGENCY  
 CONSULTANTS:  
 TOKYO ENGINEERING CONSULTANTS CO., LTD.  
 CTI ENGINEERING INTERNATIONAL CO., LTD.  
 STUP CONSULTANTS LTD.

**PROJECT:**  
 THE STUDY ON WATER QUALITY MANAGEMENT PLAN FOR GANGA RIVER IN THE REPUBLIC OF INDIA  
 FEASIBILITY STUDY FOR ALLAHABAD CITY  
**CORRIDOR:** District : B  
 Ghaggar Nala PS to Numaya Dahi STP  
**SHEET CONTENTS:** PLAN AND PROFILE (11/13)  
 (Proposed Rising Main)  
 (Ch.6000 - 6600)

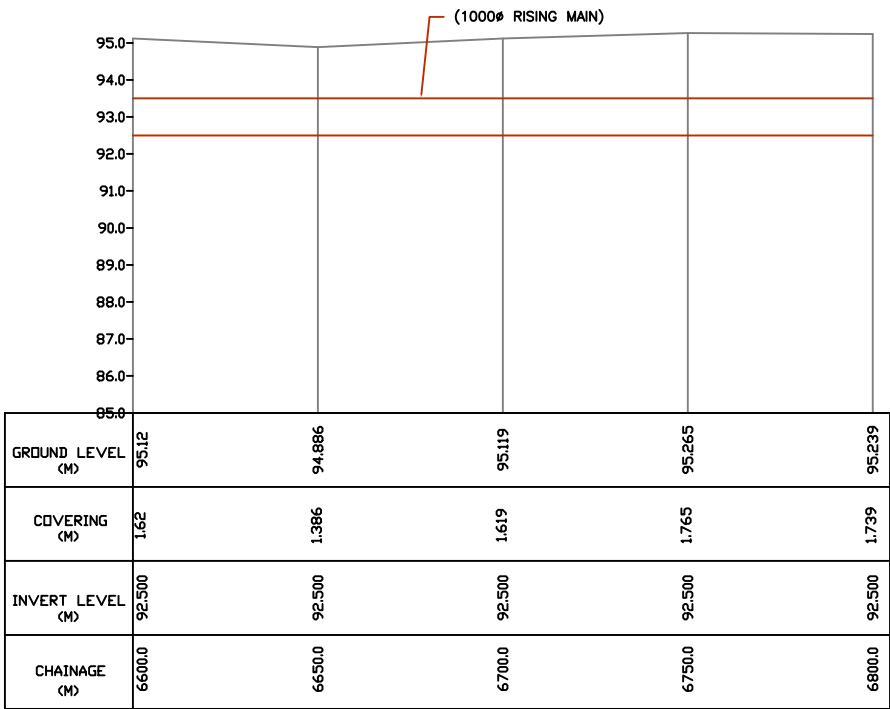
**DRAWING NO.** ALD-RM-B (GPS-STP)-11 **SHT. NO.** 51

TO GHAGGAR NALA PS 9 B-(1000 Ø PSC PIPE) TO NUMAYA DAHI STP



PROPOSED STP SITE

PLAN



L-SECTION

- NOTES:**
- 1) GTS BENCH MARK ON YAMUNA BRIDGE LOCATED ON STONE AT EAST END OF 9th PIER FROM SOUTH OF YAMUNA BRIDGE 292.075 Ft. (89.024 m.)
  - 2) ALL LEVELS ARE IN METERS
  - 3) AIR VALVES /SCOUR VALVES /ISOLATION VALVES HAVE NOT BEEN SHOWN IN PLAN FOR CLARITY.

**LEGEND**

PROPOSED SEWER LINE	
PROPOSED RISING MAIN	
ROAD EDGE	
UNDERGROUND LINES	
CULVERT/BRIDGE	
HANDPUMP	
ELECTRIC POLE	
ELECTRIC LINE	
TELEPHONE POLE	
TELEPHONE LINE	
TRANSFORMER	
OFC PILLAR	
KILOMETER POST	
TREE	
HECTOMETER POST	
LAMP POST	
RAILWAY LINE	
NALA	
WATER MAIN	
EXISTING SEWER	
TRENCHLESS TECHNOLOGY	
NALA CROSSING	
RAILWAY LINE CROSSING	
AIR VALVE	
SCOUR VALVE	
ISOLATION VALVE	

**REFERENCE DRAWING:**

INST.					
ELEC.					
MECH.					
STRU.					
CIVIL					
REV NO.	0	1	2	3	4

REV.	DESCRIPTION OF REVISIONS	DATE	CHECKED

CHECKED BY: A.Bhatnagar	CHECK	APPROVED BY: D.Sarkar	APPROVE
DESIGNED R.Mittal	SCALE H=1:1000 V=1:100	SURVEYED S.Sharma	DATE 05-01-2005

**JICA** JAPAN INTERNATIONAL COOPERATION AGENCY

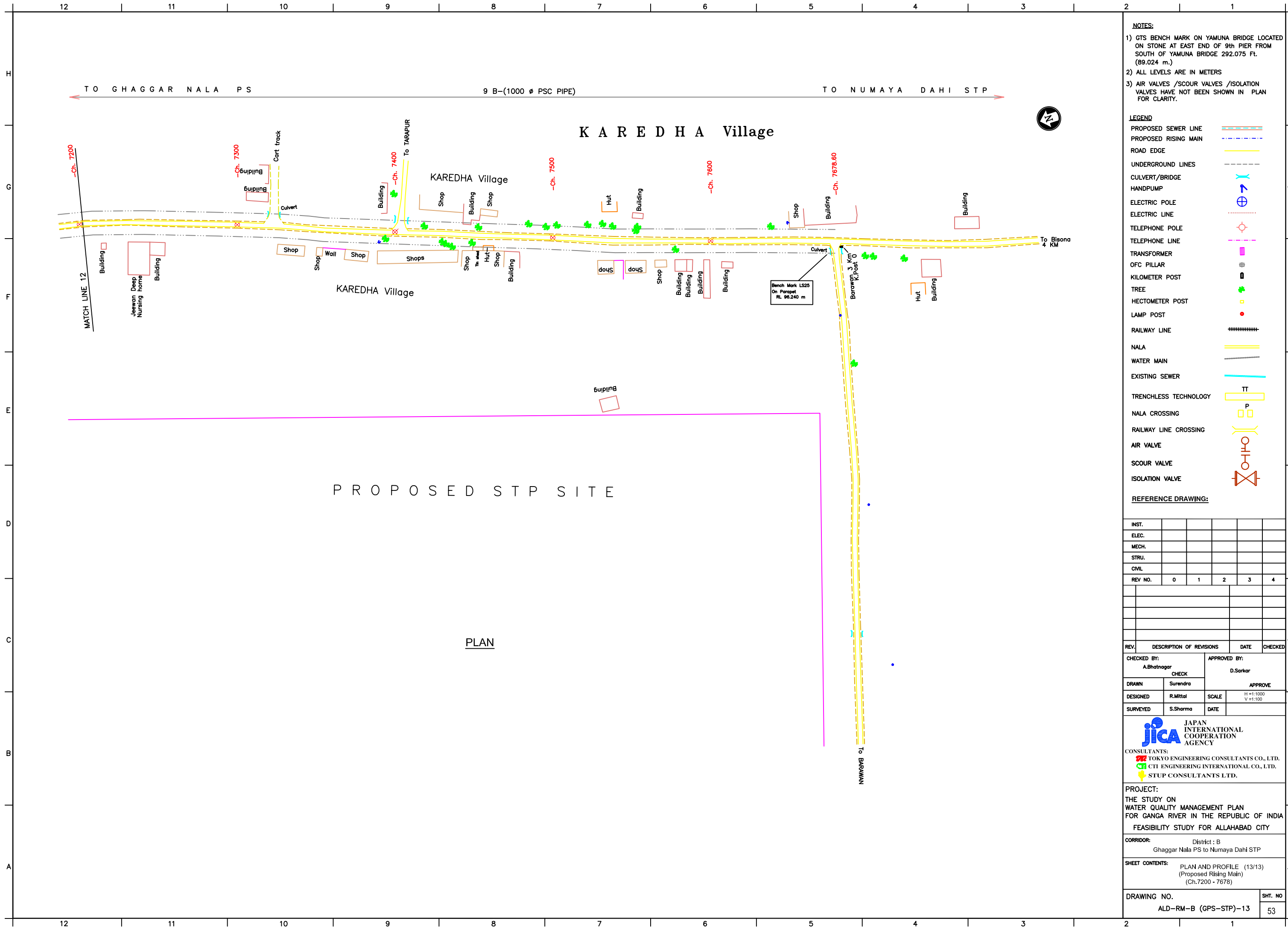
CONSULTANTS:  

 TOKYO ENGINEERING CONSULTANTS CO., LTD.  
 CTI ENGINEERING INTERNATIONAL CO., LTD.  
 STUP CONSULTANTS LTD.

PROJECT:  
 THE STUDY ON WATER QUALITY MANAGEMENT PLAN FOR GANGA RIVER IN THE REPUBLIC OF INDIA  
 FEASIBILITY STUDY FOR ALLAHABAD CITY

CORRIDOR:  
 District : B  
 Ghaggar Nala PS to Numaya Dahi STP

SHEET CONTENTS:  
 PLAN AND PROFILE (12/13)  
 (Proposed Rising Main)  
 (Ch.6600 - 7200)



- NOTES:**
- 1) GTS BENCH MARK ON YAMUNA BRIDGE LOCATED ON STONE AT EAST END OF 9th PIER FROM SOUTH OF YAMUNA BRIDGE 292.075 Ft. (89.024 m.)
  - 2) ALL LEVELS ARE IN METERS
  - 3) AIR VALVES /SCOUR VALVES /ISOLATION VALVES HAVE NOT BEEN SHOWN IN PLAN FOR CLARITY.

**LEGEND**

PROPOSED SEWER LINE	
PROPOSED RISING MAIN	
ROAD EDGE	
UNDERGROUND LINES	
CULVERT/BRIDGE	
HANDPUMP	
ELECTRIC POLE	
ELECTRIC LINE	
TELEPHONE POLE	
TELEPHONE LINE	
TRANSFORMER	
OFC PILLAR	
KILOMETER POST	
TREE	
HECTOMETER POST	
LAMP POST	
RAILWAY LINE	
NALA	
WATER MAIN	
EXISTING SEWER	
TRENCHLESS TECHNOLOGY	
NALA CROSSING	
RAILWAY LINE CROSSING	
AIR VALVE	
SCOUR VALVE	
ISOLATION VALVE	

**REFERENCE DRAWING:**

INST.					
ELEC.					
MECH.					
STRU.					
CIVIL					
REV NO.	0	1	2	3	4

REV.	DESCRIPTION OF REVISIONS	DATE	CHECKED
CHECKED BY:	A.Bhatnagar	APPROVED BY:	D.Sarkar
DRAWN	Surendra	SCALE	H=1:1000 V=1:100
DESIGNED	R.Mittal	DATE	
SURVEYED	S.Sharma		

**JICA** JAPAN INTERNATIONAL COOPERATION AGENCY

CONSULTANTS:  
 TOKYO ENGINEERING CONSULTANTS CO., LTD.  
 CTI ENGINEERING INTERNATIONAL CO., LTD.  
 STUP CONSULTANTS LTD.

**PROJECT:**  
 THE STUDY ON WATER QUALITY MANAGEMENT PLAN FOR GANGA RIVER IN THE REPUBLIC OF INDIA  
 FEASIBILITY STUDY FOR ALLAHABAD CITY

**CORRIDOR:** District : B  
 Ghaggar Nala PS to Numaya Dahi STP

**SHEET CONTENTS:** PLAN AND PROFILE (13/13)  
 (Proposed Rising Main)  
 (Ch.7200 - 7678)

**DRAWING NO.** ALD-RM-B (GPS-STP)-13  
**SHT. NO.** 53

PROPOSED STP SITE

PLAN