

---

## 添付資料

---

- A-1: 第3章 3.3 の別表-1～別表-10
- A-2: 議事録、M/M(事前調査、R/D 協議)、R/D、PDM、PO
- A-3: PDM(和文)
- A-4: PO(和文)
- A-5: Questionnaire
- A-6: 収集資料リスト
- A-7: 面会者リスト
- A-8: 事前評価表
- A-9: R/D 協議時収集資料

---

A-1: 第3章 3.3 の別表-1～別表-10

---

## DOACAO GOVERNO JAPONES E GOVERNO COREANO AO GOVERNO DA RDTL

No	Descricao de Equipamento	Total Unidade	Reg.Baucau	Reg.Dili	Reg.Same	Reg.Maliana	Reg.Oekumi
1	Transporter	13	1	4	1	2	1
2	Bulldozer D8.5	1					
3	Bulldozer D6	2		1			
4	Bulldozer D5	2				1	1
5	Bulldozer D4	3		1	1		
6	Mini Dozer	9	1	3	1	1	1
7	Loader	6	1	1	1		1
8	Motor Grader	4		1			1
9	Excavator	6		1	1	1	1
10	Whell Excavator	5	1	1			1
11	Material Carrier	9	1	3			
12	Crane 20 Ton	5	1	2		1	
13	Crane 10 Ton	1		1			
15	Road Surface treatment se	1		1			
16	Roller 5-6 Ton	5	1	1			1
17	Roller 12-15 Ton	1					
18	Concrete Mixer	4		1		1	
19	Mini Stone Crusher	4		1			1
20	Forklift 3 Ton	4		1			1
21	Light Truck	4		1			
22	Medium Truck	10	1	2	1	1	1
23	Large Truck	6		2			
24	Motor bike	5		1			
25	Generator 150kw	12	1	5	1	1	1
26	Generator 60kw	8		8			
27	Ambulance	3		3			
28	Water tank	1		1			
29	Small Truck	25/24		25/25			

MINISTRY OF TRANSPORT, COMMUNICATION AND PUBLIC WORKS  
DEPARTMENT OF MATERIALS AND EQUIPMENT  
LIST OF VEHICLES AND CONSTRUCTION MACHINERY

別表-2(1/9)

18/11/2004 (1)

NO.	REG. NO.	E Q U I P M E N T	M A C H I N E M O D E L	T		E N G I N E			S T A T I O N (R E G I O N A L O F F I C E)	S T A T E	R e m a r k s
				WEIGHT	CAPACITY	MAKER	OUTPUT (KW,HP,RPM,CC)	UNIT PRICE (US\$)			
	REG. NO.	TYPE OF THE MACHINE	SERIAL/CHASSIS NUMBER	YEAR	YEAR	MODEL	SERIAL (PIN) NUMBER	(CIF DILI)			
1	0001	Hydraulic Breaker						Maliana R.O.			
2		Hydraulic Iron Claw (attachment) Iida Tekko Co., Ltd.	HS-700N 11128	2002				Maliana R.O.			
3		Hydraulic Iron Claw (attachment) Iida Tekko Co., Ltd.	HS-700N	2002				Dili HQ (Taci Tolu)			
4		Hydraulic Vibratory Pile Driver (attachment)						Maliana R.O.			
5		Hydraulic Vibratory Pile Driver (attachment)						Dili HQ (Taci Tolu)			
6		? Parkins	3CX-4 414165				2200 U632887X	Dili HQ (Taci Tolu)			
7		Asphalt Distributer NISSAN/Harta Machinery	KK-LK252EH LK252E-05031	2002	3000 Lit	NISSAN FE6/D1105	152 204 3000 6925	Dili HQ (Taci Tolu)			
8	74-1702 UN 5291	Asphalt Distributer NISSAN/Harta Machinery	KK-LK252EH LK252E-05032	2002	3000 Lit	NISSAN FE6/D1105	152 204 3000 6925 PE6-109467G	Dili HQ (Taci Tolu)			
9	90-3007	Bulldozer Mitsubishi H. Indust.	BD2J JB010172/ 2B010172		5100 kg Blade m	Mitsubishi SAS-51BD		Dili HQ (Taci Tolu)			
10	90-3003	Bulldozer Mitsubishi H. Indust.	BD2J JB010168/2B010168		5100 kg Blade m	Mitsubishi SAS-51BD	SAS-088748	Dili HQ (Taci Tolu)			
11	90-3001	Bulldozer Mitsubishi H. Indust.	BD2J JB010166/ 2B010166		5100 kg Blade m	Mitsubishi SAS-51BD	SAS-088170	Dili HQ (Taci Tolu)			
12	5119	Bulldozer Mitsubishi H. Indust.	BD2J JB010169/2B010169		5100 kg (Blade) m	Mitsubishi SAS-51BD	SAS-088747	Maliana R.O.			
13	5124	Bulldozer Mitsubishi H. Indust.	BD2J JB010170/2B010170		5100 kg (Blade) m	Mitsubishi SAS-51BD	SAS-089073	Maliana R.O.			

STATE OF THE MACHINE: G = GOOD, M = MODERATE, US = UNSERVICEABLE, DSP = MACHINE HAS BEEN DESPOSED

OPERATION OF THE MACHINE: OP = IN OPERATION, UR = UNDER REPAIR, W = AWAITING SPARE PARTS

MINISTRY OF TRANSPORT, COMMUNICATION AND PUBLIC WORKS  
DEPARTMENT OF MATERIALS AND EQUIPMENT  
LIST OF VEHICLES AND CONSTRUCTION MACHINERY

別表-2(2/9)

18/11/2004 (2)

NO.	REG. NO.	E Q U I P M E N T		M A C H I N E		T		E N G I N E			STATION (REGIONAL OFFICE) UNIT PRICE (US\$) (CIF/DILJ)	STATE	Remarks	
		TYPE OF THE MACHINE	MAKER	SERIAL/CHASSIS NUMBER	MACHINE MODEL	WEIGHT	CAPACITY	YEAR	MAKER	OUTPUT (KW,HP,PM,CC)				MODEL
14		Bulldozer		BD2J		5100 kg			Mitsubishi			Dili HQ (Tiaci Tolu)		
		Mitsubishi H. Indust.		JB010174/ 2B010174		Blade m			SAS-51BD	SAS-089456				
15		Bulldozer		BD2J		5100 kg			Mitsubishi			Dili HQ (Tiaci Tolu)		
		Mitsubishi H. Indust.		JB010171/ 2B010171		Blade m			SAS-51BD	SAS-089072				
16	90-3008	Bulldozer		BD2J		5100 kg			Mitsubishi			Dili HQ (Tiaci Tolu)		
		Mitsubishi H. Indust.		2B010173					SAS-51BD	SAS-089453				
17		Bulldozer		BD2J		5100 kg			Mitsubishi			Same R.O.		Natabela (10/Sep) 698 Hours
		Mitsubishi H. Indust.		JB010107/ 2B010107		Blade m			SAS-51BD	SAS-088171				
① 18	90-2008	Bulldozer		D41E-6		11000 kg			KOMATSU	86 115 2400	5900	Dili HQ (Tiaci Tolu)		
		Komatsu		50245		Blade m			S6D102E-1-A	26294540				
19	UN 5031	Bulldozer		D41E-6		11000 kg			KOMATSU	86 115 2400	5900	Maliana R.O.		
		Komatsu		50246		(Blade) m			S6D102E-1-A					
20	90-2012	Bulldozer		D41E-6		11000 kg			KOMATSU	86 115 2400	5900	Maliana R.O.		
	UN 5033	Komatsu				(Blade) m			S6D102E-1-A					
21		Bulldozer		D41E-6		11000 kg			KOMATSU	86 115 2400	5900			Natabela (10/Sep) 1665 Hours
		Komatsu				(Blade) m			S6D102E-1-A					
22	90-2001	Bulldozer		D65E-12E		19700 kg			KOMATSU	132 177 1950	11945	Dili HQ (Tiaci Tolu)		
		Komatsu		65238		Blade m			6D125E-2	00088595				
23		Concrete Mixer		MCM-350		2500 kg	2002					Maliana R.O.		
		Marutomo Machinery Co., Ltd.		010007		0.5 m <sup>3</sup>								
24		Concrete Mixer		MCM-350		2500 kg	2002					Dili HQ (Tiaci Tolu)		
		Marutomo Machinery Co., Ltd.				0.5 m <sup>3</sup>								
25		Concrete Mixer (small)										Maliana R.O.		
② 26	90-0003	Crawler Dump with Crane		MST-600VD		7000 kg			MITSUBISHI	55 74 2800	3567	Dili HQ (Tiaci Tolu)		
		Morooka Co., Ltd.		60258		2800 kg			4D32-E2					

STATE OF THE MACHINE: G=GOOD, M=MODERATE, US=UNSERVICABLE, DSP=MACHINE HAS BEEN DESPOSED

OPERATION OF THE MACHINE: OP=IN OPERATION, UR=UNDER REPAIR, W=AWAITING SPARE PARTS

MINISTRY OF TRANSPORT, COMMUNICATION AND PUBLIC WORKS  
DEPARTMENT OF MATERIALS AND EQUIPMENT  
LIST OF VEHICLES AND CONSTRUCTION MACHINERY

別表-2(3/9)

18/11/2004 (3)

NO.	REG. NO.	E	Q	U	I	P	M	E	N	T	E N G I N E			STATION (REGIONAL OFFICE) UNIT PRICE (US\$) (CIF DILI)	STATE	Remarks	
											MAKER	OUTPUT (KW/HP/RPM/CC)	SERIAL. (PIN) NUMBER				MAKER
27	90-0002	Crawler Dump with Crane	Morooka Co., Ltd.														
																	MST-600VD
28	90-0001	Crawler Dump with Crane	Morooka Co., Ltd.														
																	MST-600VD
29	5134	Crawler Dump with Crane	Morooka Co., Ltd.														
																	MST-600VD
30		Crawler Dump with Crane	Morooka Co., Ltd.														
																	MST-600VD
31		Crawler Dump with Crane	Morooka Co., Ltd.														
																	MST-600VD
32		Crawler Dump with Crane	Morooka Co., Ltd.														
																	MST-600VD
33		Crawler Dump with Crane	Morooka Co., Ltd.														
																	MST-600VD
34		Crawler Dump with Crane	Morooka Co., Ltd.														
																	MST-600VD
35	90-2012 UN 5156	Forklift	TOYOTA														
																	FDT25
36		Forklift	TOYOTA														
																	FDT25
37		Forklift	TOYOTA														
																	FDT25
38		Forklift	TOYOTA														
																	FDT25
39		Forklift	TOYOTA														
																	FDT25
																	Workshop use

STATE OF THE MACHINE: G=GOOD, M=MODERATE, US=UNSERVICEABLE, DSP = MACHINE HAS BEEN DESPOSED

OPERATION OF THE MACHINE: OP = IN OPERATION, UR = UNDER REPAIR, W = AWAITING SPARE PARTS



MINISTRY OF TRANSPORT, COMMUNICATION AND PUBLIC WORKS  
DEPARTMENT OF MATERIALS AND EQUIPMENT  
LIST OF VEHICLES AND CONSTRUCTION MACHINERY

別表-2(4/9)

18/11/2004 (4)

NO.	REG. NO.	REG. NO. ID/CODE	E Q U I P M E N T TYPE OF THE MACHINE MAKER	M A C H I N E SERIAL/CHASSIS NUMBER	M O D E L	W E I G H T		E N G I N E		S T A T I O N (REGIONAL OFFICE) UNIT PRICE (US\$) (CIF DILI)	S T A T E OPERA	R e m a r k s
						CAPACITY	YEAR	MAKER MODEL	OUTPUT (KW/HP/PM/CC) SERIAL (PIN) NUMBER			
40			Generator Denyo				60 kVA	Isuzu 4BG1	50 67 2200 4329	Dili HQ (Faci Tolu)		
41		No.2	Generator Denyo	DC-150 SPK 3711548		3P-94 kVA		Komatsu S6D108E-2-A	135 181 1800 7150	Dili HQ (Faci Tolu)		
42		No.3	Generator Denyo	DC-150 SPK 3711550		3P-94 kVA		Komatsu S6D108E-2-A	135 181 1800 7150	Dili HQ (Faci Tolu)		
43		No.4	Generator Denyo	DC-150 SPK 3711547		3P-94 kVA		Komatsu S6D108E-2-A	135 181 1800 7150	Dili HQ (Faci Tolu)		
44		No.5	Generator Denyo	DC-150 SPK 3711544		3P-94 kVA		Komatsu S6D108E-2-A	135 181 1800 7150	Dili HQ (Faci Tolu)		
45		No.6	Generator Denyo	DC-150 SPK 3711546		3P-94 kVA		Komatsu S6D108E-2-A	135 181 1800 7150	Dili HQ (Faci Tolu)		
46		No.7	Generator Denyo	DC-150 SPK 3711549		3P-94 kVA		Komatsu S6D108E-2-A	135 181 1800 7150	Dili HQ (Faci Tolu)		
47		No.8	Generator Denyo	DC-150 SPK 3711545		3P-94 kVA		Komatsu S6D108E-2-A	135 181 1800 7150	Dili HQ (Faci Tolu)		
48		No.1	Generator Denyo	DC-150 SPK 3711551		3P-94 kVA		Komatsu S6D108E-2-A	135 181 1800 7150	Dili HQ (Faci Tolu)		
49	01-2241		Hydraulic Excavator COBELCO	SK200-VI YN07-32694		20000 kg Bucket m <sup>3</sup>		MTSUBISHI 6D34-TEI	107 143 2000 5861			
50	UN 5047		Hydraulic Excavator Hitach Construction Machinery	ZX120 (ZAXIS-120) HCM1S1001V00062883		12000 kg Bucket m <sup>3</sup>		ISUZU CC-4BG1TCG	68 91 2150 4329	Maliana R.O.		Tci Tolu (Sep04)
51			Hydraulic Excavator Hitach Construction Machinery	ZX120 (ZAXIS-120) HCM1S1001-00062888		12000 kg Bucket m <sup>3</sup>	1996	ISUZU CC-4BG1TCG	68 91 2150 4329	Dili HQ (Faci Tolu)		
52			Hydraulic Excavator Hitach Construction Machinery	ZX120 (ZAXIS-120) HCM1S1001-0006288		12000 kg Bucket m <sup>3</sup>	1996	ISUZU CC-4BG1TCG	68 91 2150	Dili HQ (Faci Tolu)		

STATE OF THE MACHINE: G=GOOD, M=MODERATE, US=UNSERVICEABLE, DSP=MACHINE HAS BEEN DISPOSED

OPERATION OF THE MACHINE: OP=IN OPERATION, UR=UNDER REPAIR, W=AWAITING SPARE PARTS

MINISTRY OF TRANSPORT, COMMUNICATION AND PUBLIC WORKS  
DEPARTMENT OF MATERIALS AND EQUIPMENT  
LIST OF VEHICLES AND CONSTRUCTION MACHINERY

別表-2(5/9)

18/11/2004 (5)

NO.	REG. NO.	E Q U I P M E N T	MACHINE MODEL	N T		E N G I N E			STATION (REGIONAL OFFICE)	STATE	Remarks
				WEIGHT	CAPACITY	YEAR	MAKER	OUTPUT (KW/HP/RPM/CC)			
	REG. NO. ID/CODE	TYPE OF THE MACHINE MAKER	SERIAL/CHASSIS NUMBER	WEIGHT	CAPACITY	YEAR	MAKER	OUTPUT (KW/HP/RPM/CC)	UNIT PRICE (US\$) (CIF/DIL)	STATE	Remarks
53	74-1601	Hydraulic Excavator (Wheel)	PW200-1	18500 kg	18500 kg	2002	KOMATSU	110 145 2100	6490	Dili HQ (Taci Tolu)	
		Komatsu	10193	Bucket m'	Bucket m'		S6D105				
54	UN 5055	Hydraulic Excavator (Wheel)	PW200-1	18500 kg	18500 kg	2002	KOMATSU	110 145 2100	6490	Maliara R.O.	
		Komatsu	10194	Bucket m'	Bucket m'		S6D105				
55	74-1604	Hydraulic Excavator (Wheel)	PW200-1	18500 kg	18500 kg	2002	KOMATSU	110 145 2100	6490	Dili HQ (Taci Tolu)	
	UN 5052	Komatsu	10196	Bucket m'	Bucket m'		S6D105	122079			
56		Hydraulic Excavator (Wheel)	PW200-1	18500 kg	18500 kg	2002	KOMATSU	110 145 2100	6490	Same R.O.	Natobola (10/Sep) 1944 Hours
		Komatsu	10195	Bucket m'	Bucket m'		S6D105				
57		Mobile Crane		kg	kg					Dili HQ (Taci Tolu)	
		PPM		t	t						
58		Mobile Crane	EZ03	27000 kg	27000 kg	2002		183 246 2800	7545	Dili HQ (Taci Tolu)	
		COBELCO	EZ03	20 t	20 t						
59	71-3714	Mobile Crane	EZ03 (RK250-5)	27000 kg	27000 kg	2002	Mitsubishi	183 246 2800	7545	Dili HQ (Taci Tolu)	
		COBELCO	EZ03-7349	20 t	20 t		6D16-TL				
60		Mobile Crane	EZ03 (RK250-5)	27000 kg	27000 kg	2002	Mitsubishi	183 246 2800	7545	Dili HQ (Taci Tolu)	
		COBELCO	EZ03	20 t	20 t		6D16-TL				
61		Mobile Crushing Unit	BR1000G-2	9900 kg	9900 kg	2000	KOMATSU	40.5 54 2100		Dili HQ (Taci Tolu)	
		Komatsu		15-50 t/h	15-50 t/h		4D95LE-2-A	107663			
62		Mobile Crushing Unit	MC240G	10000 kg	10000 kg		NISSAN DIESEL	41 55 2200	1935	Maliara R.O.	
		Nakayama Steel Works	1016	15-50 t/h	15-50 t/h		A-BD30				
63		Mobile Crushing Unit	MC240G	10000 kg	10000 kg		NISSAN	41 55 2200	1935	Dili HQ (Taci Tolu)	
		Nakayama Steel Works		15-50 t/h	15-50 t/h		A-BD30				
64	71-4781	Motor Grader	MG330E	12000 kg	12000 kg		MITSUBISHI			Dili HQ (Taci Tolu)	
		Mitsubishi Heavy Industry	3GA 01188	Blade m	Blade m		6D16	952122			
65	5062	Motor Grader	MG330E	12000 kg	12000 kg		MITSUBISHI			Maliara R.O.	Becc (10/Sep)
		Mitsubishi Heavy Industry	3GA01189	Blade m	Blade m		6D16	952124			

STATE OF THE MACHINE: G=GOOD, M=MODERATE, US=UNSERVICEABLE, DSP=MACHINE HAS BEEN DEPOSED

OPERATION OF THE MACHINE: OP=IN OPERATION, UR=UNDER REPAIR, W=AWAITING SPARE PARTS



MINISTRY OF TRANSPORT, COMMUNICATION AND PUBLIC WORKS  
DEPARTMENT OF MATERIALS AND EQUIPMENT  
LIST OF VEHICLES AND CONSTRUCTION MACHINERY

別表-2(6/9)

18/11/2004 (6)

NO.	REG. NO.	REG. NO. ID / CODE	E Q U I P M E N T		M A C H I N E		T		E N G I N E			STATION (REGIONAL OFFICE) UNIT PRICE (US\$) (CIF/DILJ)	STATE OPERA	Remarks
			TYPE OF THE MACHINE MAKER	MACHINE MODEL SERIAL/CHASSIS NUMBER	WEIGHT CAPACITY	YEAR	MAKER MODEL	OUTPUT (KW/HP/PM/CC) SERIAL (PIN) NUMBER	MAKER MODEL	OUTPUT (KW/HP/PM/CC) SERIAL (PIN) NUMBER				
66			Motor Grader Mitsubishi Heavy Industry	MG330E 3GA01190	12000 kg Blade m			MITSUBISHI 6D16	952085		Maitiana R.O.		Manvat (10/Sep)	
67			Motor Grader Mitsubishi Heavy Industry	MG330E 3GA01191	12000 kg Blade m			MITSUBISHI 6D16	952088		Dili HQ (Taci Tolu)			
68			Retro Excavator (Loader & Backhoe) JCB											
69	90-1002		Vibration Roller KOMATSU	JV40CW5 6170	3600 kg Roller m			KOMATSU 3D84E-30	20 28 2550 30663	1496	Dili HQ (Taci Tolu)			
70	5064		Vibration Roller KOMATSU	JV40CW5 6108	3600 kg Roller m			KOMATSU 3D84E-30	20 28 2550	1496	Maitiana R.O.			
71	UN 5061 90-1005		Vibration Roller KOMATSU	JV40CW5 6110	3600 kg Roller m			KOMATSU 3D84E-30	20 28 2550 38673	1496	Dili HQ (Taci Tolu)			
72	UN 5059 90-1001		Vibration Roller KOMATSU	JV40CW5 6106	3600 kg Roller m			KOMATSU 3D84E-30	20 28 2550 38680	1496	Dili HQ (Taci Tolu)			
73			Vibration Roller KOMATSU	JV40CW5 6109	3600 kg Roller m			KOMATSU 3D84E-30	20 28 2550	1496	Same R.O.		Nianbola (10/Sep) 818 Hours	
74	77-0158		Wheel Loader Kawasaki Heavy Industry	6D11 0120	12500 kg Bucket m <sup>3</sup>	2002		ISUZU A-6BG1T	118 158 2200 138812	6494	Dili HQ (Taci Tolu)			
75	5057		Wheel Loader Kawasaki Heavy Industry	6D11 0117	12500 kg Bucket m <sup>3</sup>	2002		ISUZU A-6BG1T	118 158 2200	6494	Maitiana R.O.		Becc (10/Sep)	
76	77-0156		Wheel Loader Kawasaki Heavy Industry	6D11 0118	12500 kg Bucket m <sup>3</sup>	2002		ISUZU A-6BG1T	118 158 2200 6494	6494	Maitiana R.O.			
77			Wheel Loader Kawasaki Heavy Industry	6D11 0119	12500 kg Bucket m <sup>3</sup>	2002		ISUZU A-6BG1T	118 158 2200	6494	Same R.O.		Manvat (10/Sep)	
78			Wheel Loader CATERPILLAR	938G WS 00385	kg Bucket m <sup>3</sup>	1997		CATERPILLAR 138-3673	108 61K-00423	2200	Dili HQ (Taci Tolu)		Nianbola (10/Sep)	

STATE OF THE MACHINE: G = GOOD, M = MODERATE, US = UNSERVICEABLE, DSP = MACHINE HAS BEEN DESPOSED

OPERATION OF THE MACHINE: OP = IN OPERATION, UR = UNDER REPAIR, W = AWAITING SPARE PARTS

MINISTRY OF TRANSPORT, COMMUNICATION AND PUBLIC WORKS  
DEPARTMENT OF MATERIALS AND EQUIPMENT  
LIST OF VEHICLES AND CONSTRUCTION MACHINERY

別表-2(7/9)

18/11/2004 (7)

NO.	REG. NO.	REG. NO. ID/CODE	E Q U I P M E N T		M A C H I N E		T		E N G I N E			STATION (REGIONAL OFFICE) UNIT PRICE (US\$) (CIF DILJ)	STATE OPERA	Remarks
			TYPE OF THE MACHINE MAKER	SERIAL/CHASSIS NUMBER	MACHINE MODEL	WEIGHT CAPACITY	YEAR	MAKER MODEL	OUTPUT (KW/HP/PM/CC) SERIAL (PIN) NUMBER	MAKER MODEL	OUTPUT (KW/HP/PM/CC) SERIAL (PIN) NUMBER			
79			Wheel Loader SAMSUNG	LX15 38940000		kg Bucket m <sup>3</sup>	1992		SAMSUNG LX15	21107346		Dili HQ (Taci Tolu)		
80	01-566G		4 x 4 Flatbed Truck ISUZU	FSS33H4 7000003		5225 kg 4600 kg	2002		ISUZU 6HHI-S	165 221 2900 8226		Dili HQ (Taci Tolu)		
81	01-557G		4 x 4 Flatbed Truck ISUZU	NFS72L 7400768		kg kg	2002		ISUZU 4HU1	114 152 3100 4986		Dili HQ (Taci Tolu)		
82	74-1501		Earth Auger Truck with Crane ISUZU/AICHI Coporation	NKR71E/NKCISC (D-50A) NKR71E-7426133		6100 kg CRAN kg			ISUZU 4HG1	98 131 3100 4570		Dili HQ (Taci Tolu)		
83	74-1502 UN 5147		Earth Auger Truck with Crane ISUZU/AICHI Coporation	NKR71E/NKCISC (D-50A) NKR71E-		6100 kg CRAN kg			ISUZU 4HG1	98 131 3100 4570		Dili HQ (Taci Tolu)		
84	72-0709		Equipment Carrier MITSUBISHI	FS50MTZK3 FS50MTZ-520136		11600 kg 13200 kg	2002		MTSUBISHI 8M2113AZ4221	316 423 2200 8M21-028008		Dili HQ (Taci Tolu)		
85	72-0703		Equipment Carrier MITSUBISHI	FS50MTZK3 FS50MTZ-520127		11600 kg 13200 kg	2002		MTSUBISHI 8M2113AZ4221	316 423 2200 8M21-027920		Dili HQ (Taci Tolu)		
86	72-0701		Equipment Carrier MITSUBISHI	FS50MTZK3 FS50MTZ-520125		11600 kg 13200 kg	2002		MTSUBISHI 8M2113AZ4221	316 423 2200 8M21-027886		Dili HQ (Taci Tolu)		
87	72-0713		Equipment Carrier Mitsubishi	FS50MTZK3 FS50MTZ-520143		11600 kg 13200 kg	2002		MTSUBISHI 8M2113AZ4221	316 423 2200 21205		Maliana R.O.		
88	UN 5203		Equipment Carrier Mitsubishi	FS50MTZK3 FS50MTZ-520139		11600 kg 13200 kg	2002		MTSUBISHI 8M2113AZ4221	316 423 2200 21205		Maliana R.O.		
89			Equipment Carrier Mitsubishi	FS50MTZK3 FS50MTZ-520133		11600 kg 13200 kg	2002		MTSUBISHI 8M2113AZ4221	316 423 2200 21205		Maliana R.O.		Natabela (10/Sep) Wheels have been removed
90			Equipment Carrier Mitsubishi	FS50MTZK3 FS50MTZ-520130		11600 kg 13200 kg	2002		MTSUBISHI 8M2113AZ4221	316 423 2200 21205		Maliana R.O.		Beco (10/Sep)
91			Equipment Carrier Mitsubishi	FS50MTZK3 FS50MTZ-520141		11600 kg 13200 kg	2002		MTSUBISHI 8M2113AZ4221	316 423 2200 21205		Dili HQ (Taci Tolu)		

STATE OF THE MACHINE: G = GOOD, M = MODERATE, US = UNSERVICEABLE, DSP = MACHINE HAS BEEN DESPOSED

OPERATION OF THE MACHINE: OP = IN OPERATION, UR = UNDER REPAIR, W = AWAITING SPARE PARTS

MINISTRY OF TRANSPORT, COMMUNICATION AND PUBLIC WORKS  
DEPARTMENT OF MATERIALS AND EQUIPMENT  
LIST OF VEHICLES AND CONSTRUCTION MACHINERY

別表-2(8/9)

18/11/2004 (8)

NO.	REG. NO.	REG. NO. ID/CODE	E Q U I P M E N T		M A C H I N E		T		E N G I N E			STATION (REGIONAL OFFICE) UNIT PRICE (US\$) (CIF DILJ)	STATE OPERA.	Remarks
			TYPE OF THE MACHINE	MAKER	SERIAL/CHASSIS NUMBER	MACHINE MODEL	WEIGHT	YEAR	MAKER	OUTPUT (KW,HP,PM,CC)	MODEL			
92	00-795 G	Flatbed Truck	HINO	JHDF1JHL	10013	10000 kg			HINO	J08CF-16235	Dili HQ (Taci Tolu)	6OCT04	Oil leak-Transm & Diff	
93	00-700 G	Flatbed Truck	HINO	JHDF1JHL	10020	10000 kg			HINO	J08CF-16571	Dili HQ (Taci Tolu)	6OCT04	Oil leak-Transm & Diff Fault-Cab lock	
94	00-682 G	Flatbed Truck	HINO	JHDF1JHL	10012	10000			HINO	J08CF-16232	Dili HQ (Taci Tolu)	6OCT04	Fault-Cab lock	
95	00-691 G	Flatbed Truck	HINO	JHDF1JHL	10016	10000			HINO	J08CF-16412	Dili HQ (Taci Tolu)	6OCT04	Oil leak- Diff	
96	00-793 G	Flatbed Truck	HINO	JHDF1JHL	10018	10000			HINO	J08CF-16468	Dili HQ (Taci Tolu)	6OCT04	Oil leak- Diff	
97	00-704 G	Flatbed Truck	HINO	JHDF1JHL	10017	10000			HINO	J08CF-16423	Dili HQ (Taci Tolu)			
98	00-699 G	Flatbed Truck	HINO	JHDF1JHL	10015	10000			HINO	J08CF-16382	Dili HQ (Taci Tolu)			
99	00-692 G	Flatbed Truck	HINO	JHDF1JHL	10022	10000			HINO	J08CF-16603	Dili HQ (Taci Tolu)			
100	00-698 G	Flatbed Truck	HINO	JHDF1JHL	10011	10000			HINO	J08CF-16085	Dili HQ (Taci Tolu)			
101	00-791 G	Flatbed Truck	HINO	JHDF1JHL	10014	10000 kg			HINO	J08CF-16239	Dili HQ (Taci Tolu)	6OCT04	Oil leak-Transm & Diff	
102	00-770 G	Flatbed Truck	Mitsubishi	JMFFK617KOKJ	00148		1999		Mitsubishi	933423	Dili HQ (Taci Tolu)			
103	00-771 G	Flatbed Truck	Mitsubishi	JMFFK617KOKJ	00144		1999		Mitsubishi	932995	Dili HQ (Taci Tolu)			
104	00-769 G	Flatbed Truck	Mitsubishi	JMFFK617KOKJ	00130		1999		Mitsubishi	930671	Dili HQ (Taci Tolu)			

STATE OF THE MACHINE: G=GOOD, M=MODERATE, US=UNSERVICEABLE, DSP = MACHINE HAS BEEN DESPOSED

OPERATION OF THE MACHINE: OP = IN OPERATION, UR = UNDER REPAIR, W = AWAITING SPARE PARTS



MINISTRY OF TRANSPORT, COMMUNICATION AND PUBLIC WORKS  
 DEPARTMENT OF MATERIALS AND EQUIPMENT  
 LIST OF VEHICLES AND CONSTRUCTION MACHINERY

別表-2(9/9)

18/11/2004 (9)

NO.	REG. NO.	E Q U I P M E N T		M A C H I N E		M A C H I N E		E N G I N E		STATION (REGIONAL OFFICE) UNIT PRICE (US\$) (CIF/DILJ)	STATE	Remarks
		TYPE OF THE MACHINE	MAKER	SERIAL/CHASSIS NUMBER	MACHINE MODEL	WEIGHT	CAPACITY	YEAR	MAKER			
105	00-767 G	Flatbed Truck		JMFFK617KOKU					Mitsubishi		Dili HQ (Taci Tolu)	
		Mitsubishi		00149			1999		6D16	933437		
106	00-768 G	Flatbed Truck		JMFFK617KOKU					Mitsubishi		Dili HQ (Taci Tolu)	
		Mitsubishi		00147			1999		6D16	933360		
107		Station Wagon (4x4)		KH-KD95W-GKPEY					TOYOTA		Dili HQ (Taci Tolu)	
		TOYOTA		KD95-0027918					IKD-FTV	3000		

STATE OF THE MACHINE: G=GOOD, M=MODERATE, US=UNSERVICEABLE, DSP=MACHINE HAS BEEN DEPOSED

OPERATION OF THE MACHINE: OP=IN OPERATION, UR=UNDER REPAIR, W=AWAITING SPARE PARTS

## 調査で確認できた機械の一覧

保管場所	機械名	台数	備考
タシートル キャンプ (大型テント)	コンプレッサー(1)	1	
	発電機(1)	2	
	発電機(2)	1	
	発電機(3)	1	
	コンプレッサー(2)	1	
	発電機(4)	1	
	計	7	
タシートル キャンプ (屋外)	ホイール式バックホウ	4	
	トラッククレーン		
	ホイールクレーン		
	運搬車	5	
	アスファルト散布車		
	ブルドーザ(3台)		
	トラクタショベル(ホイールローダ)	3	
	ホイールクレーン	6	
	バックホウ(油圧ショベル)		
	バックホウ(油圧ショベル)		
	運搬車(大)		
	モータグレーダ(2台)		
	ブルドーザ(バックホウ付き)	5	
	ゴムクローラキャリア(クレーン付)	4	
	運搬車(小)	1	
	振動ローラ	1	
	救急車	1	
	運搬車(大)	4	
	運搬車(小)		
	ホイールクレーン		
	門建車		
	フォークリフト	2	
	トラック(小)	1	
	トラック(大)	2	
	トラック(小)		
	トラック(小)	2	
	トラック(大)		
	運搬車(大)	2	
	ホイールクレーン		
	アスファルト散布車	1	
門建車	1	写真は、無いがタシートルキャンプで確認できた。	
計	46		
マリアナ キャンプ	ブルドーザ(バックホウ付き)	1	
	ゴムクローラキャリア(クレーン付)	1	
	フォークリフト	1	
	運搬車(大)	1	
	トラック	1	
	フォークリフト	1	
	計	6	
マリアナ 直轄現場	振動ローラ(コンバインローラ)	1	
	油圧ショベル	1	
	ブルドーザ(バックホウ付)	1	
	ホイールローダ	1	写真無し、崖下に放置されている。
	計	4	
ベコ 直轄現場	トラクタショベル(ホイールローダ)	1	
	運搬車(大)	1	
	モータグレーダ	1	
	ブルドーザ	1	
	計	4	

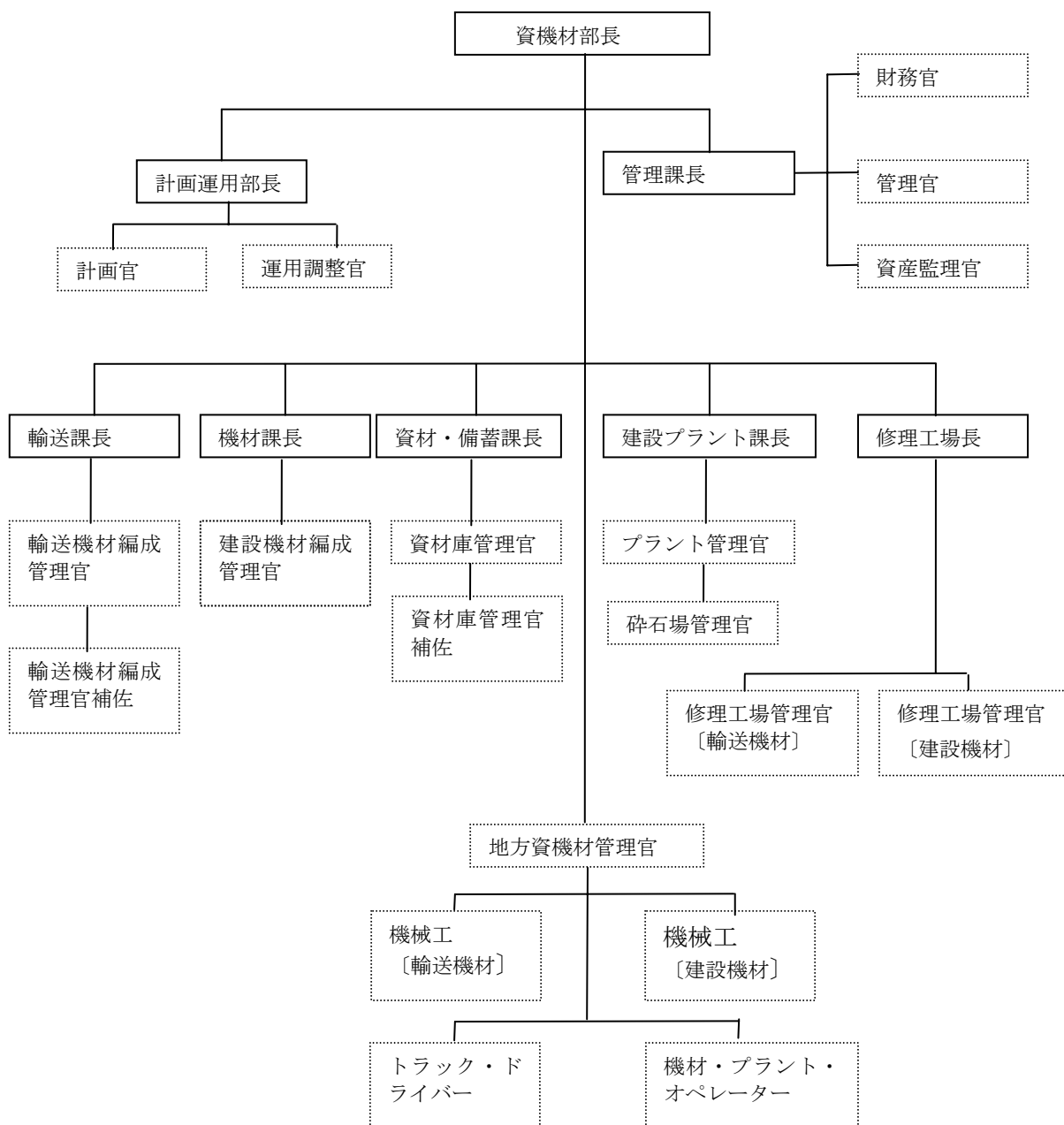


## 調査で確認できた機械の一覧

保管場所	機械名	台数	備考
デイリ 地方事務所	ホイールクレーン	1	
	ブルドーザ	1	
	救急車	1	
	ブレード	2	
	発電機(1)	2	
	発電機(2)	1	
	発電機(3)	2	
	ケトル	1	
	計	11	
バウカウ 地方事務所	ロードローラ	1	
	振動ローラ	1	
	トラック	1	
	計	3	
合計		81	



資機材部組織図



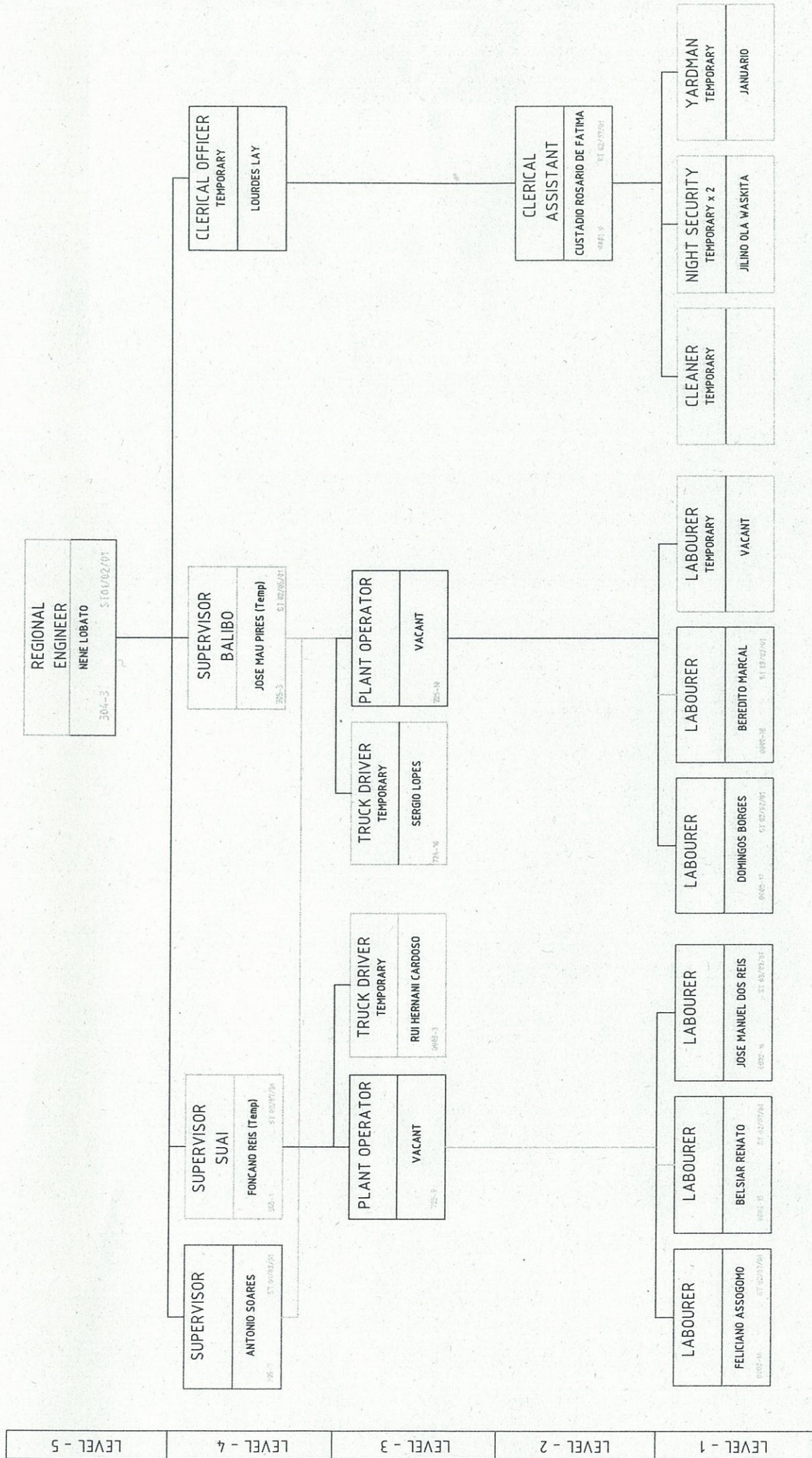
凡例：

  承認されたかあるいは提案中の部署

  現在、存在している部署



ROADS REGIONAL OFFICE - MALIANA



LEVEL - 5  
LEVEL - 4  
LEVEL - 3  
LEVEL - 2  
LEVEL - 1



JICA - CETRAP Trainees List

CONFIDENTIAL

Nov. 21 '04  
JICA - CETRAP

1. Construction Management Course

Name	Date of Birth	Age	Place of Birth	Present Address	Academic Background	Civil Status	No. of Children	Experience (Year)	Employment	Remarks
1 ANTONIO SOARES	26.02.70	34	Caiaico	MALIANA	UNIVERSITY OF KUPANG	MARRIED	2	7	Road Services	Maliana
2 GEORALDO LEMOS SOARES	05.12.63	41	Dili	Dili	INSTITUTE TECHNOLOGY SURABAYA	MARRIED	5	15	Road Services	Dili
3 JOSE MARIA DA COSTA	01.07.76	28	Ainaro	Same	UNIVERSITAS JONOBADRA	MARRIED	-	3	Road Services	Same
4 MARTINHO MIRA	21.03.77	27	Baucau	BAUCAU	POLITEKNIK HERA	SINGLE	-	2	MSF (NGO)	Medicina San Fronteiras
5 SABINO DA COSTA VENTURA	17.04.77	28	Baucau	Dili	UNIVERSITY OF KUPANG	MARRIED	2	5	Road, Bridge & F/C	Central Office (Dili)

2. Construction Equipment Operator Course

Name	Date of Birth	Age	Place of Birth	Present Address	Academic Background	Civil Status	No. of Children	Experience (Year)	Employment	Remarks
1 AGOSTINHO BOSCO BOAVIDA	7-6-1967	37	BAUCAU	DILI	SENIOR HIGH SCHOOL	SINGLE	0	1	N/A	
2 AMERICO RAMOS GRACA	23-12-1974	30	DILI	DILI	SENIOR HIGH SCHOOL	MARRIED	3	3	N/A	
3 DAVID AMARAL DE CARVALHO	3-6-1974	30	BAUCAU	DILI	SENIOR HIGH SCHOOL	MARRIED	3	6	N/A	
4 FILOMENO AMARAL	2-11-1968	27	DILI	DILI	SENIOR HIGH SCHOOL	MARRIED	5	10	N/A	
5 FRANCISCO DA SILVA	20-6-1973	31	BAUCAU	DILI	SENIOR HIGH SCHOOL	MARRIED	5	12	N/A	
6 HERMENEGILDO DOS SANTOS	2-5-1972	31	MALIANA	DILI	SENIOR HIGH SCHOOL	MARRIED	4	9	N/A	
7 JOSE DA SILVA	20-3-1960	44	MALIANA	DILI	PRIMARY SCHOOL	MARRIED	7	24	N/A	
8 JOSE SOARES	12-10-1970	34	MANATUT	DILI	SENIOR HIGH SCHOOL	MARRIED	3	4	N/A	
9 LUIS BENEVIDES MARTINS	24-11-1970	34	AINARO	DILI	PRIMARY SCHOOL	MARRIED	5	5	N/A	
10 MANUEL ABDON XIMENES	13-7-1968	36	MANATUT	DILI	SENIOR HIGH SCHOOL	MARRIED	2	6	N/A	
11 IMATEUS DOS REIS	22-6-1969	36	MALIANA	DILI	SENIOR HIGH SCHOOL	MARRIED	3	12	N/A	

3. Construction Equipment Maintenance Course

Name	Date of Birth	Age	Place of Birth	Present Address	Academic Background	Civil Status	No. of Children	Experience (Year)	Employment	Remarks
1 AGOSTINHO BOAVIDA	28.05.1978	26	BAUCAU	DILI	UNIVERSITY (UNTL)	MARRIED	2	2	N/A	NO.2
2 AGOSTINHO BOAVIDA	01.01.1976	28								NO.1
3 JAKINU SOARES	02.04.1983	21	DILI	DILI	SD/PRIMARY SCHOOL	SINGLE		8 MONTHS	N/A	
4 ANTONIO XIMENES	03.08.1973	31	BAUCAU	DILI	SD/PRIMARY SCHOOL	MARRIED	3	N/A	MTCPW	
5 GALITO LOPES	08.08.1970	34	MALIANA	DILI	SMA/SENIOR HIGH SCHOOL	MARRIED	3	4	N/A	
6 CARLITO DE FATIMA	08.08.1977	27	DILI	DILI	SMP/JUNIOR HIGH SCHOOL	MARRIED	3	1	N/A	
7 FERIX SOARES	06.06.1955	49	ERMERA	DILI	SD/PRIMARY SCHOOL	MARRIED	3	2	N/A	
8 FRANCISCO CARLUS	20.06.1977	27	AILEU	DILI	N/A	MARRIED	3	2	N/A	
9 GIL BORGES DE ARAUJO	12.02.1975	29	DILI	DILI	SMA/SENIOR HIGH SCHOOL	MARRIED	1		N/A	
10 HERDY MANUELA	12.10.1982	22	DILI	DILI	SMP/JUNIOR HIGH SCHOOL	SINGLE		1	N/A	Deserted (11/8/04)
11 JOAO DE DEUS PIRES SOARES	14.02.1977	27	BAUCAU	DILI	POLY-TECHNIC DILI (D. II)	SINGLE			N/A	Enrolled 14/SEP Deserted (3/11/04)
12 JOSE ANTONIO DA CUNHA	05.12.1960	43	MALIANA	DILI	SD/PRIMARY SCHOOL	MARRIED	2	15	N/A	
13 JOSE MENDONSA	01.01.1965	39	DILI	DILI	SMA/SENIOR HIGH SCHOOL	SINGLE			N/A	
14 LUIS ALBANO C.D. DUARTE	12.12.1982	21	DILI	DILI	SMP/JUNIOR HIGH SCHOOL	SINGLE		N/A	N/A	
15 MARCOLINO RIBEIRO AFONSO	01.09.1972	32	BAUCAU	DILI	STM/SENIOR TECH. HIGH SCHOOL	MARRIED	4	3	N/A	
16 MATEUS FARIA GOSMAO	02.09.1972	32	ERMERA	DILI	SMP/JUNIOR HIGH SCHOOL	MARRIED	3	N/A	N/A	
17 NELSON DA SILVA LUY	23.11.1977	27	DILI	DILI	SMA/SENIOR HIGH SCHOOL	SINGLE		1	N/A	



JICA-CETRAP  
REVISED PARTS LIST OF PROCUREMENT  
Supplier : A1 Services

Equipment : Bull Dozer

Manufacture/Model : KOMATSU D41E-6

Serial No. : 50245 ~ 6

Engine Model : KOMATSU S6D102E-1-A

(Currency : US\$)

No.	Items	Parts No.	Q'ty	A1 Services		Remarks
				Unit Price	Amount	
1	Fuel Filter, Cartridge	6732-71-6111	5	24.60	123.00	DONALDSON P550440
2	Engine Oil Filter, Cartridge	6735-51-5141	4	25.00	100.00	DONALDSON (3) P552424 BALOWIN (1)
3	Hydraulic Oil Filter, Cartridge	113-60-43321	5	48.50	242.50	
4	Power Line Oil Filter, Cartridge	23S-49-13122	5	112.00	560.00	
5	Air Cleaner Element, Assy	600-181-6740	5	197.00	985.00	DONALDSON P181191
6	Edge Cutting	12F-70-31251	3	111.00	333.00	
7	Bid End	11G-71-31170	2	63.70	127.40	
8	Bolt	02090-11055	23	3.90	89.70	
9	Nut	02290-11016	23	3.90	89.70	
	Total				2,650.30	



JICA-CETRAP  
PARTS LIST OF PROCUREMENT  
Supplier : A1 Services

Equipment : Flatbed Truck

Manufacture/Model : MITSUBISHI FS50MTZK3

Serial No. : FS50MTZ-520130

Engine Model : 8M211AZ4221

(Currency : US\$)

No.	Items	Parts No.	Q'ty	A1 Services		Remarks
				Unit Price	Amount	
1	Tube-less Tire, 265/70R 19.5		36	499.00	17,964.00	Bridgesone M840
	Total				17,964.00	

要請機材の参考銘柄に係る機材情報シート(個別情報)

機材名	参考銘柄/型番	数量	機材の用途	備考
portable gantry crane (ポータブルガントリークレーン)	吊り上げ荷重:3t 揚程:3185mm	1	訓練用機材 (機材等の吊り上げ用)	
portable jack (油圧ジャッキ)	50t 高低範囲(305-475mm)	2	訓練用機材 (建設機械等の整備)	
air hose reel (エアホースリール)	径:8.0mm 長さ:6m	4	訓練用機材 (エアコンプレッサー用ホース(リール付))	
mobile workbench with vise (作業台)	サイズ: 1,200 × 800 × 740mm	3	訓練用機材 (整備用作業台)	
workbench with vise (作業台)	サイズ: 900 × 600 × 740mm	3	訓練用機材 (整備用作業台)	
parts cleaner (パーツクリーナ)	タンク容量:70L × 2	1	訓練用機材 (コンパウンド)	
engine stand (エンジスタンド)	搭載重量:2t迄	2	訓練用機材 (エンジン台)	
air receiver tank and piping materials (コンプレッサー)	吐出容量:600L	1	訓練用機材 (整備用機材)	
parts shelf, drawer type (パーツ棚)	寸法:900 × 450 × 1800mm	1	訓練用機材 (整備用パーツ棚)	
mechanic tool set (整備工具セット)	140種類	2	訓練用機材 (整備用工具)	
automotive puller set (自動車専用ブラーセット)	8種類	1	訓練用機材 (自動車専用整備工具)	
mechanic puller set (整備工具ブラーセット)	1種類	1	訓練用機材 (整備用工具)	
portable hydraulic tester (ハイドロリックテスター)	流量:15 ~ 350 L/min	1	訓練用機材 (油圧系統整備用工具)	
orbital sander (オービタルサンダー)	パッドサイズ:114 × 220mm	1	訓練用機材 (整備用機材)	
polisher (ポリッシャー)	パッドサイズ:150mm	1	訓練用機材 (整備用機材)	
volt ampere regulator tester (ボルトアンペアレギュレータテスター)	DC V:0-500V AC A:0-500A	1	訓練用機材 (電気系統整備用工具)	
solderless terminal kit for construction machine (ハンダレス端子キット(建設機械))	端子、プラグ、ソケット、その他	1	訓練用機材 (電気系統整備用工具)	
drill bit set (ドリルセット)	1.0-32.0mm	2	訓練用機材 (整備用工具)	
tire service tools (タイヤ専用工具)	タイヤゲージ、ソフトハンマー、 ワイヤーブラシ等	1	訓練用機材 (タイヤ整備用工具)	
portable brake booster tester (ブレーキブースターテスター)	ゲージ:10-200kg/cm <sup>2</sup> 真空圧:76cmHg	1	訓練用機材 (ブレーキ整備用工具)	
mobile work shop (移動修理工場)		1	移動修理工場	

## 東ティモール国内における建設機械類の想定年間維持管理費額

区分	機種名	主な規格	台数	基礎価格 (千円)	標準使用 年数	維持修理 費率 (%)	年間管理 費率 (%)	1台当たりの年間 維持修理及び管理費 (千円/台)	全数の年間維持修理 及び管理費 (千円)	備考
1	モーターグレーダ	ブレード幅 3.1m	4	9,860	12	35%	0%	288	1,150	
2	油圧ショベル	13tクラス ホイール	7	9,350	10.9	45%	0%	386	2,702	
3	トラッククレーン	20tクラス	5	17,600	10	30%	0%	528	2,640	
4	小型ブルドーザ	3tクラス	9	3,840	11	40%	0%	140	1,257	
5	中型ブルドーザ	11tクラス	7	9,610	11	40%	0%	349	2,446	
6	重機材運搬車 (トレーラ)	13t 積 トレーラー	13	10,700	10	35%	0%	375	4,869	
7	パケットローダー (ホイールローダ)	1.2t (パケット容量)	5	5,910	11	70%	0%	376	1,880	
8	資材運搬車 (作業車)	5t 2.9tc	9	6,820	10	45%	0%	307	2,762	
9	ロードローラー	8~10t タンデム	5	8,320	13	35%	0%	224	1,120	
10	コンクリートミキサー	0.6m3	4	1,990	8	85%	0%	211	846	
11	クラッチャープラント	3.7kw	4	7,000	7	40%	0%	400	1,600	
12	ジープ 小型トラック	5名 2000cc	36	1,380	7	45%	0%	89	3,194	
13	中型トラック	4t 積クラス	10	3,980	10	45%	0%	179	1,791	
14	大型トラック	8t 積クラス	9	9,970	10	45%	0%	449	4,038	
15	オートバイ		5	300	7.2	45%	0%	19	94	
16	フォークリフト	1.5t クラス	4	1,620	8.5	35%	0%	67	267	
17	救急車		4	5,500	9.5	65%	0%	376	1,505	
18	発電機	150kva	8	4,220	9	45%	0%	211	1,688	
19	発電機	60kva	22	2,090	9	45%	0%	105	2,299	
20	給水設備		1	6000	8	45%	0%	338	338	
<b>合計</b>									<b>38,485</b>	