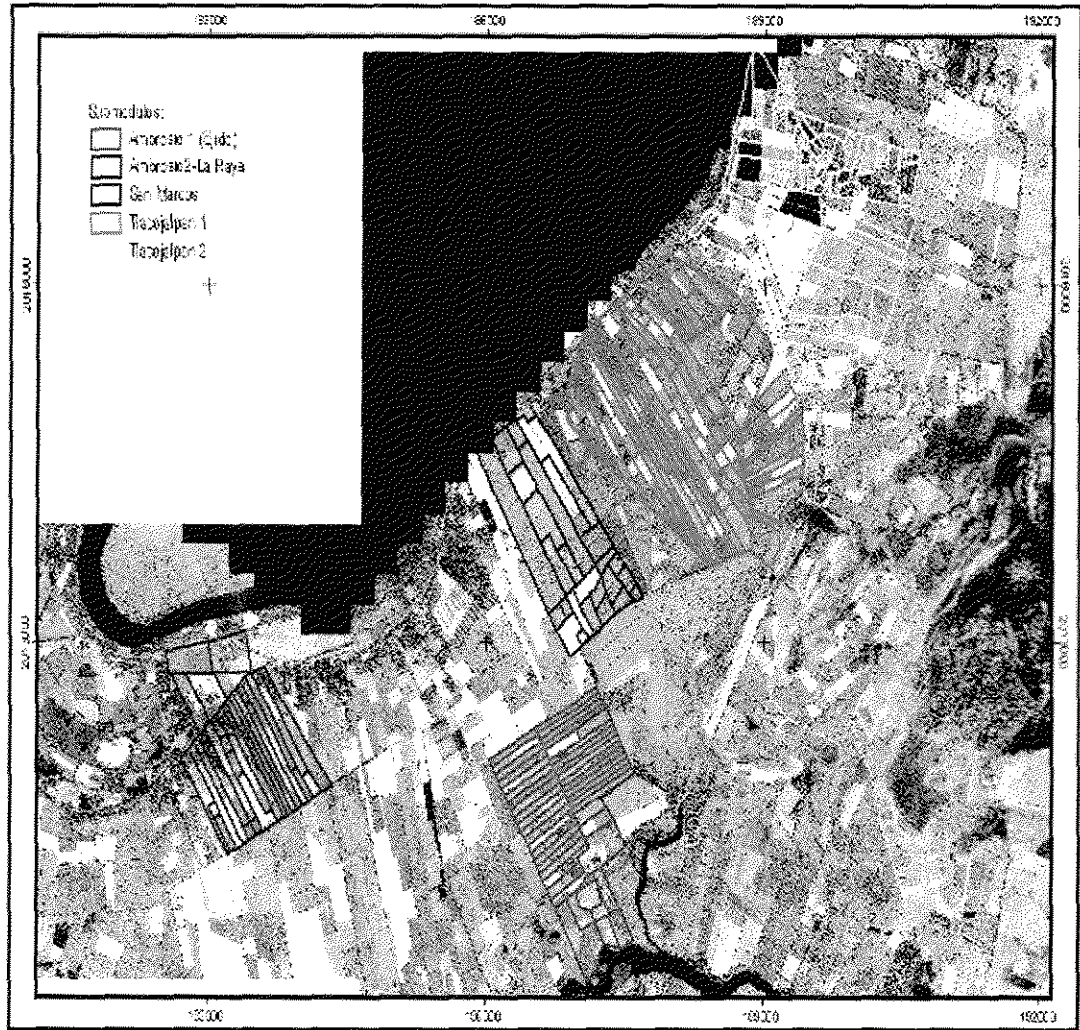
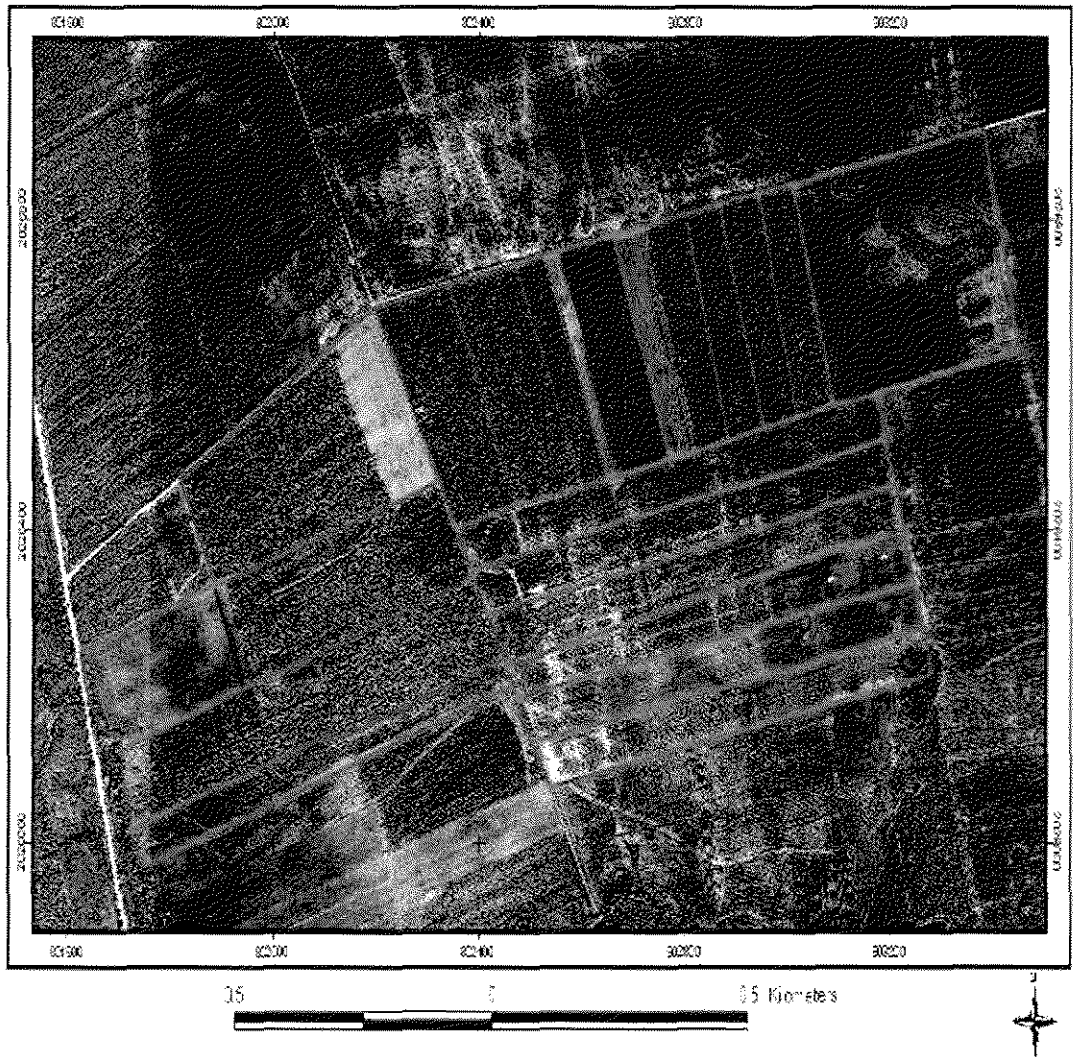


LOCATION, LIMITATION AND PARCELLING OF THE SUBMODULES OF
THE MUNICIPALITY OF TLACOJALPAN



IKONOS SATELLITE IMAGE

LOCATION, LIMITATION AND PARCELLING OF THE NUEVO MONDONGO SUBMODULE



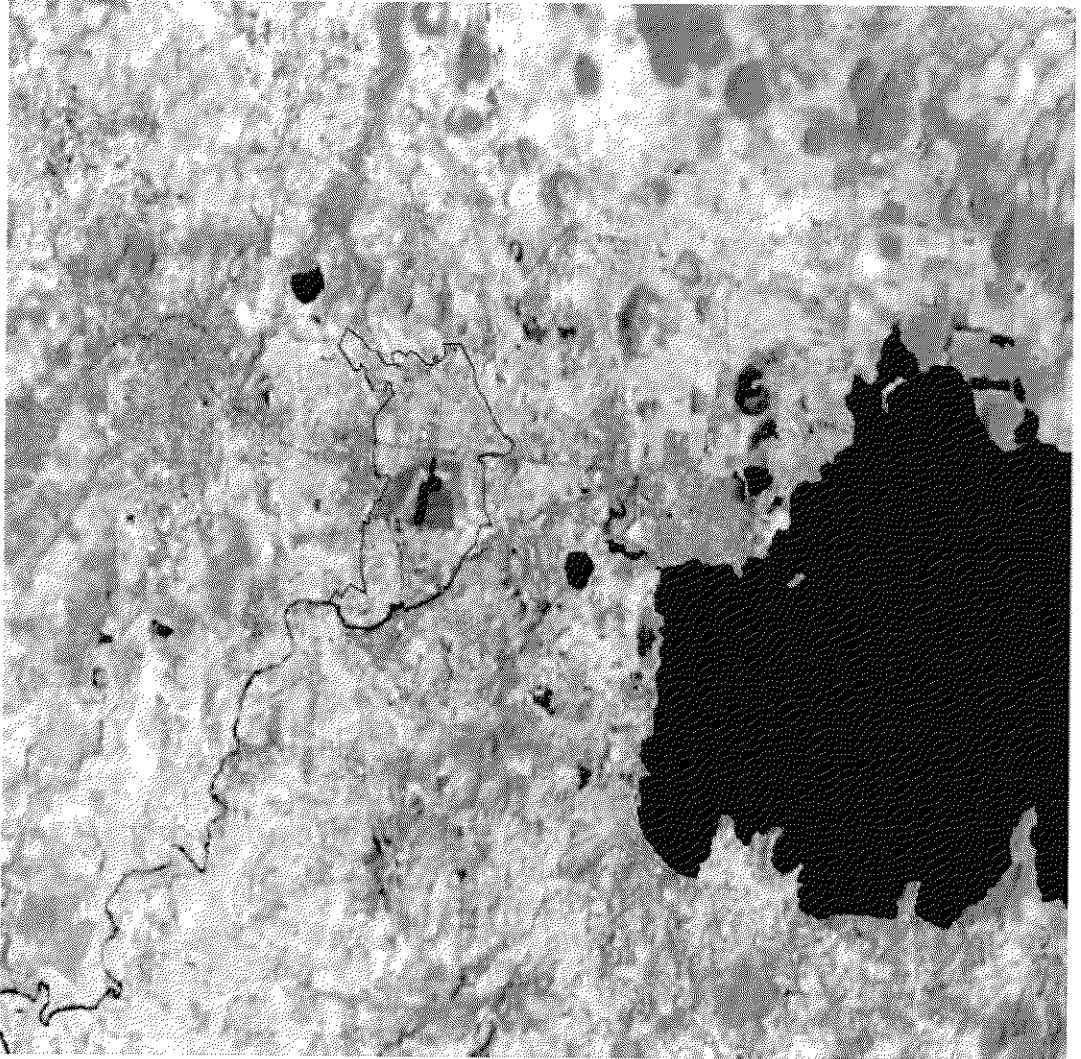
IKONOS SATELLITE IMAGE

LOCATION, LIMITATION AND PARCELLING OF THE
TESECHOACÁN-CURAZAO SUBMODULE



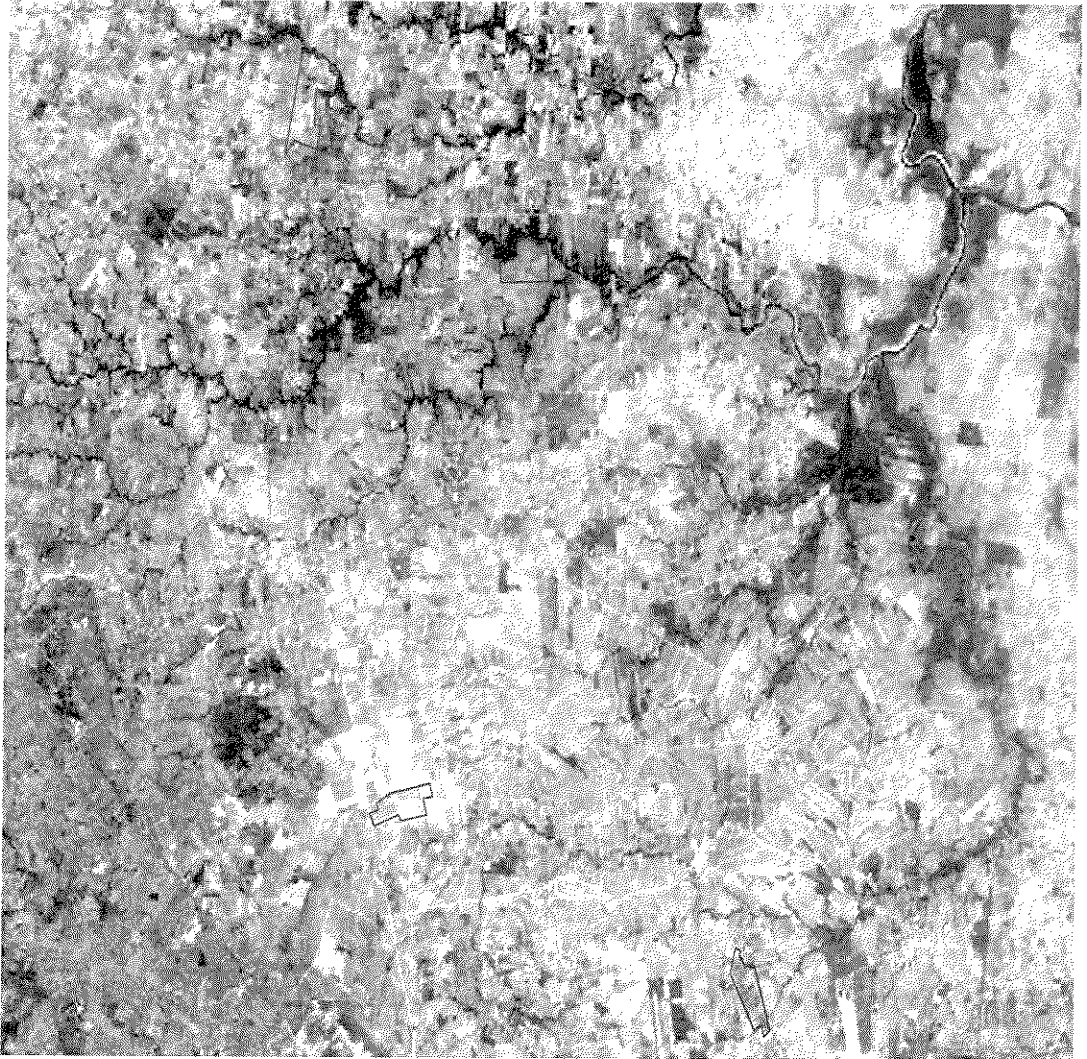
LANDSAT SATELLITE IMAGE

LOCATION, LIMITATION AND PARCELLING OF THE LAGUNA
ENCANTADA SUBMODULE



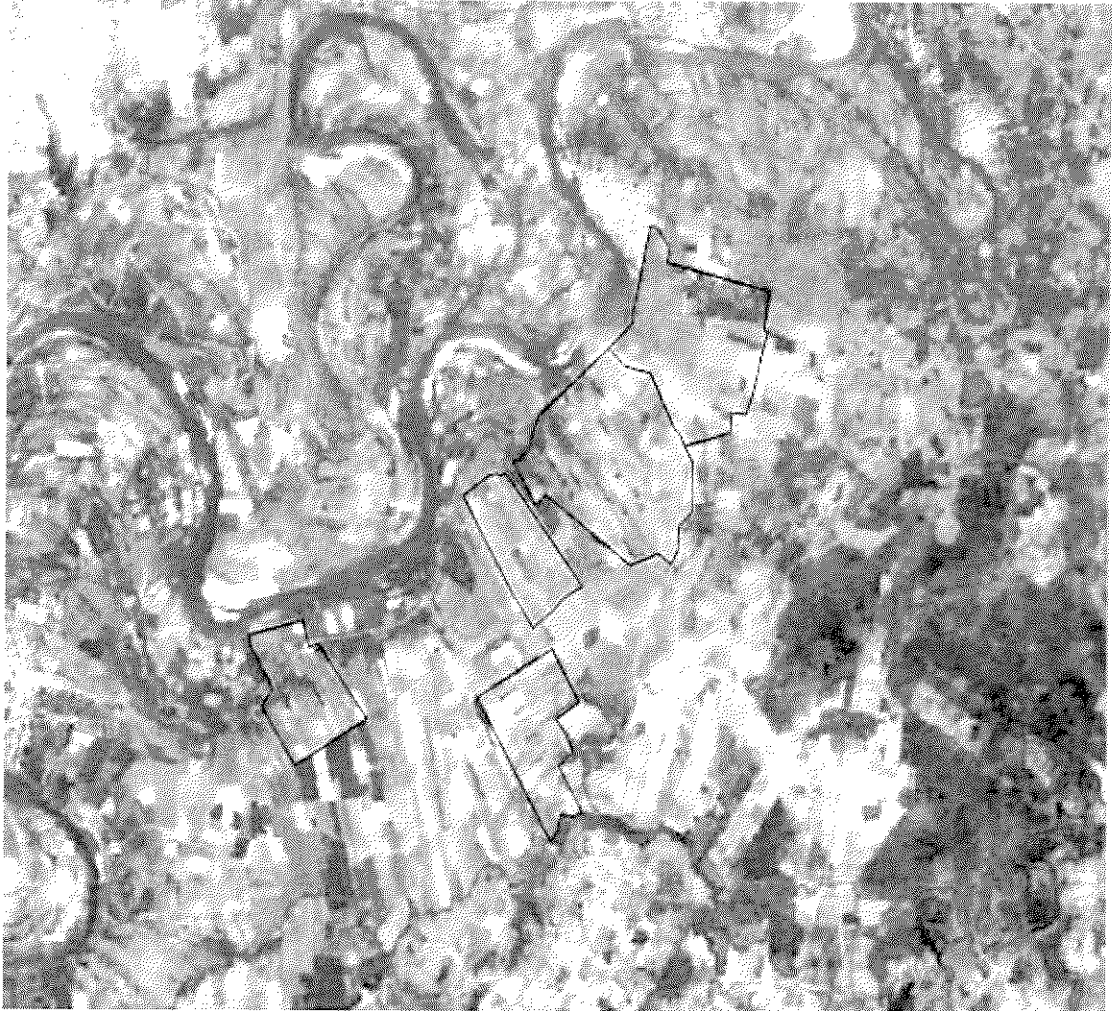
LANDSAT SATELLITE IMAGE

LOCATION, LIMITATION AND PARCELLING OF THE
LOS NARANJOS SUBMODULE



LANDSAT SATELLITE IMAGE

LOCATION, LIMITATION AND PARCELLING OF THE TLACOJALPAN-
AMBROSIO SUBMODULE



LANDSAT SATELLITE IMAGE

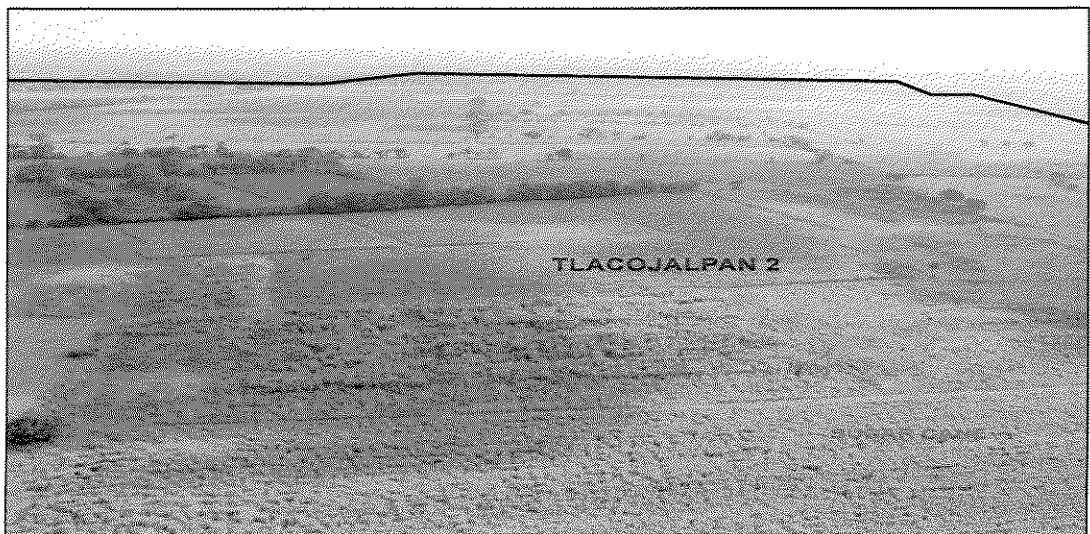
MODULE DIGITAL PHOTOS

Because of the lack of availability in the market of Multispectral Spot satellite images, the digital photographs obtained from an overflight at low altitude in a helicopter during the month of June 2004 were used for the confirmation of the types of vegetation and agricultural crops.

In the following, pages some of these photographs are presented in which the boundary of each submodule was traced.



Module 1. Laguna Encantada



Module 2. Tlacojalpan Ambrosio