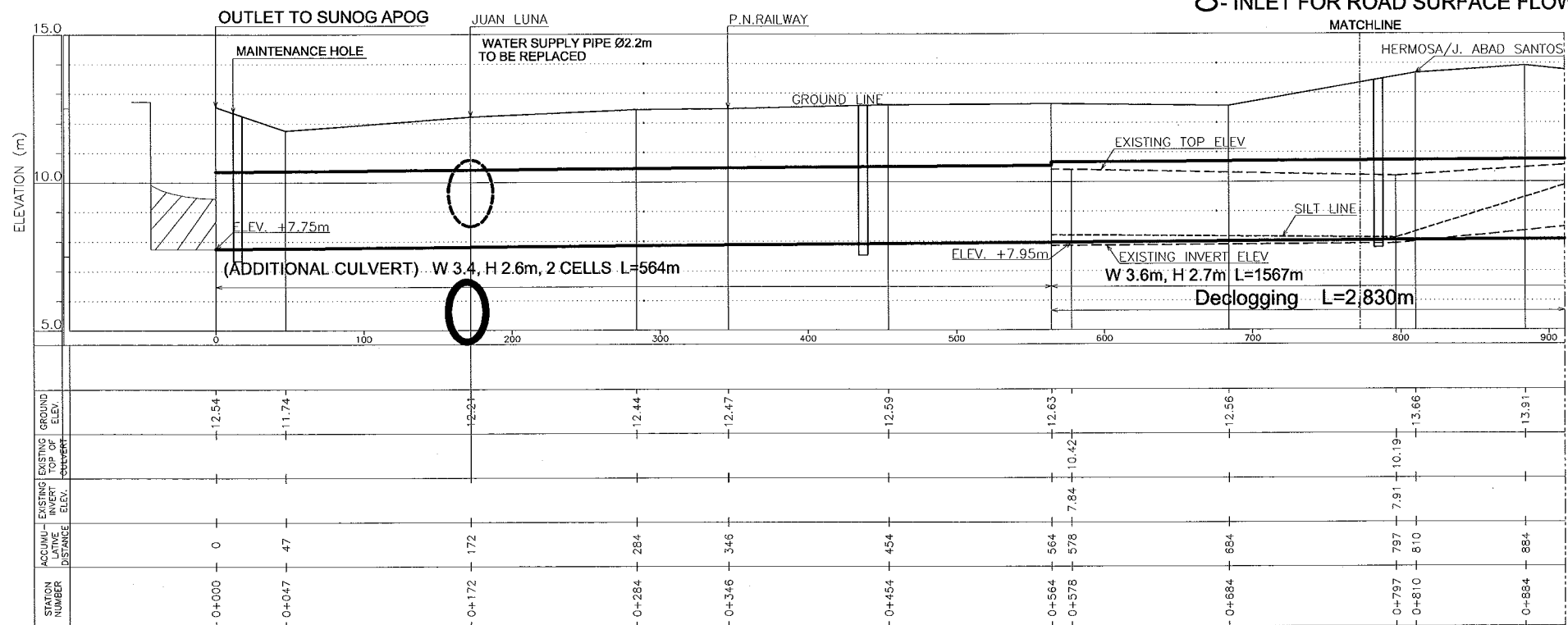


PLAN OF BLUMENTRITT INTERCEPTOR

- LEGEND
- ☐ - MAINTENANCE HOLE WITH STOP-LOG GATE
 - - MANHOLE TO BE MODIFIED
 - - INLET FOR ROAD SURFACE FLOW



PROFILE OF BLUMENTRITT INTERCEPTOR 1/3

CONSULTANTS

PACIFIC CONSULTANTS INTERNATIONAL
IN ASSOCIATION WITH
NIKKEN CONSULTANTS, INC.

REPUBLIC OF THE PHILIPPINES

JICA JAPAN INTERNATIONAL COOPERATION AGENCY
FOR
DEPARTMENT OF PUBLIC WORKS AND HIGHWAYS
METROPOLITAN MANILA DEVELOPMENT AUTHORITY

PROJECT & LOCATION:

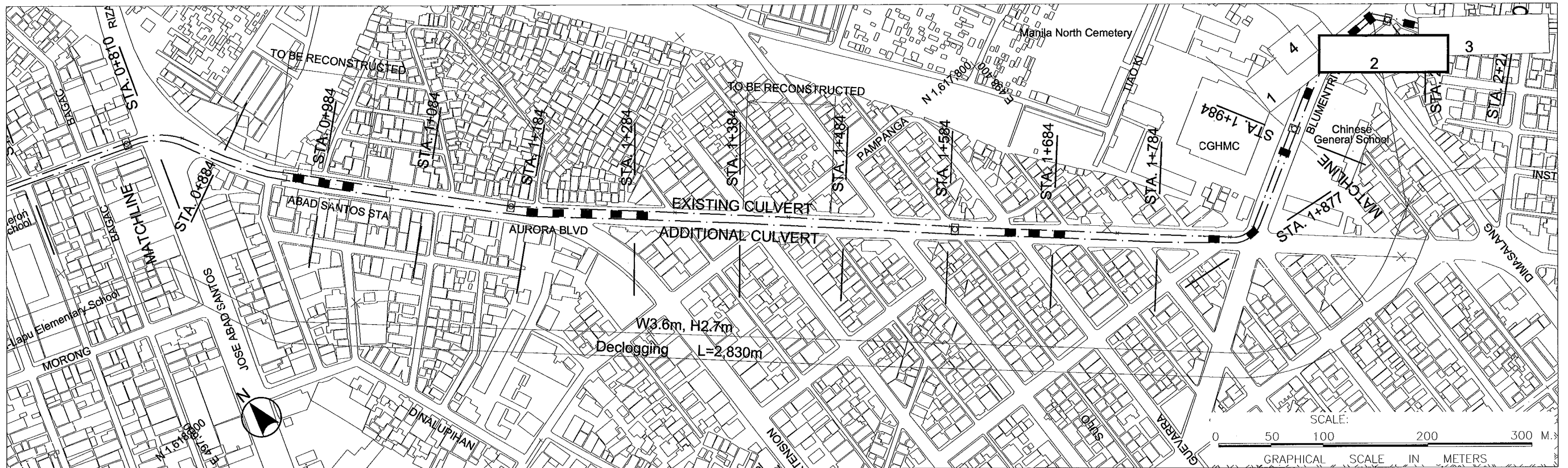
THE STUDY ON DRAINAGE IMPROVEMENT
IN THE CORE AREA OF METROPOLITAN MANILA

SHT. CONTENTS:

PLAN AND PROFILE
BLUMENTRITT INTERCEPTOR
(STA. 0+000 - 0+884)

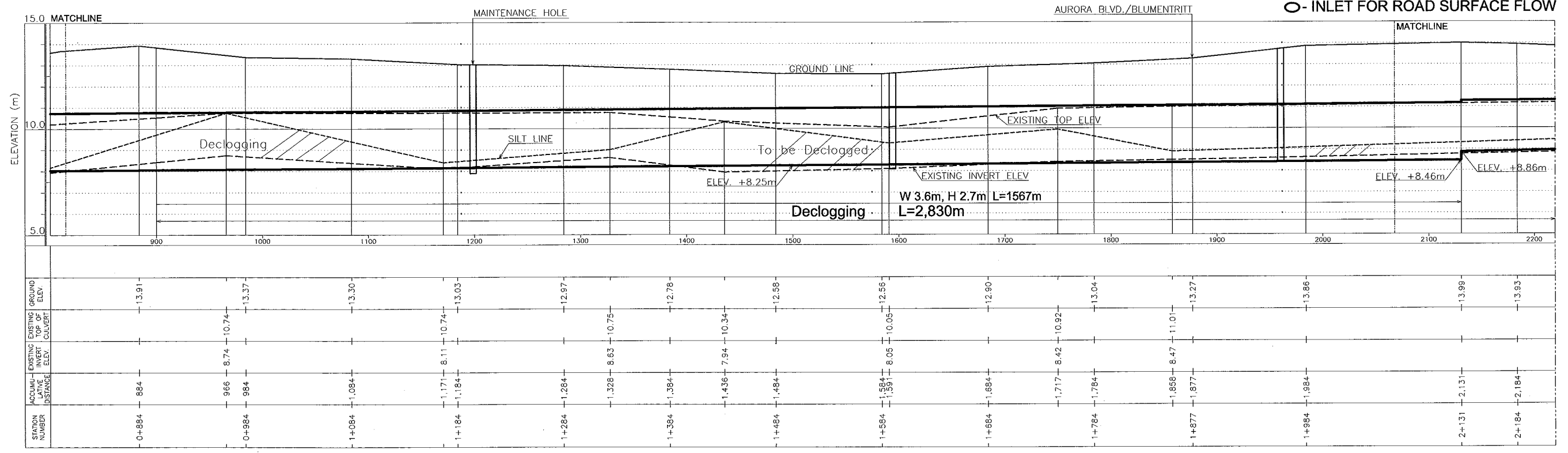
SHT. NO

11 of 37



PLAN OF BLUMENTRITT INTERCEPTOR

- LEGEND
- ☐ - MAINTENANCE HOLE WITH STOP-LOG GATE
 - - MANHOLE TO BE MODIFIED
 - - INLET FOR ROAD SURFACE FLOW

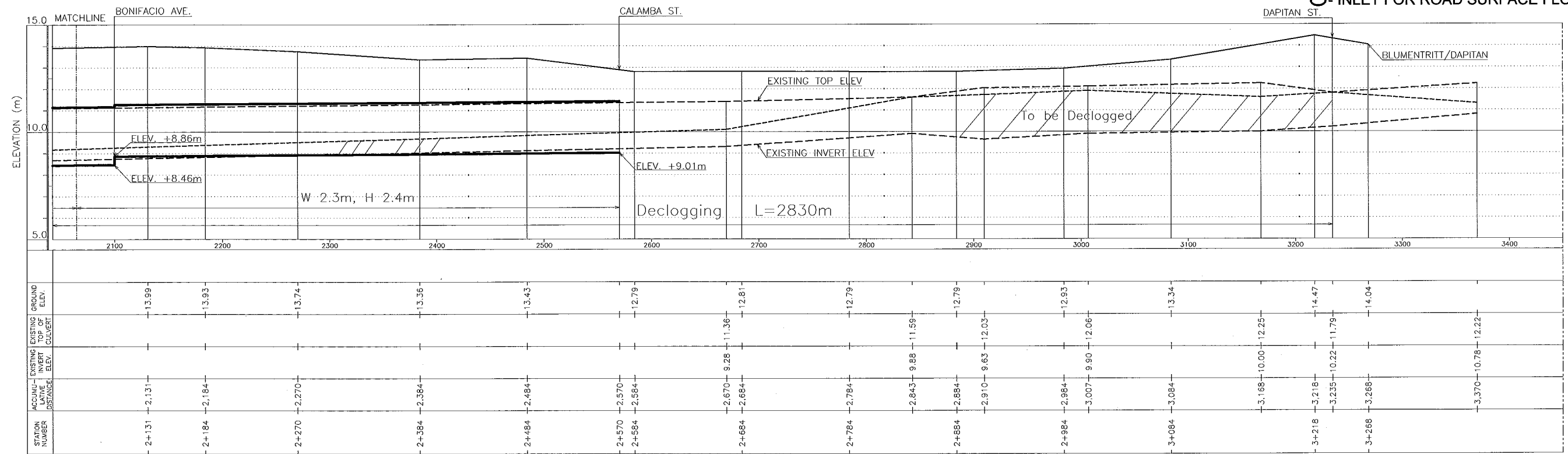


PROFILE OF BLUMENTRITT INTERCEPTOR



PLAN OF BLUMENTRITT INTERCEPTOR

- LEGEND
- - MAINTENANCE HOLE WITH STOP-LOG GATE
 - - MANHOLE TO BE MODIFIED
 - - INLET FOR ROAD SURFACE FLOW



PROFILE OF BLUMENTRITT INTERCEPTOR

CONSULTANTS

PACIFIC CONSULTANTS INTERNATIONAL
IN ASSOCIATION WITH
NIKKEN CONSULTANTS, INC.

REPUBLIC OF THE PHILIPPINES

JICA JAPAN INTERNATIONAL COOPERATION AGENCY
FOR
DEPARTMENT OF PUBLIC WORKS AND HIGHWAYS
METROPOLITAN MANILA DEVELOPMENT AUTHORITY

PROJECT & LOCATION:

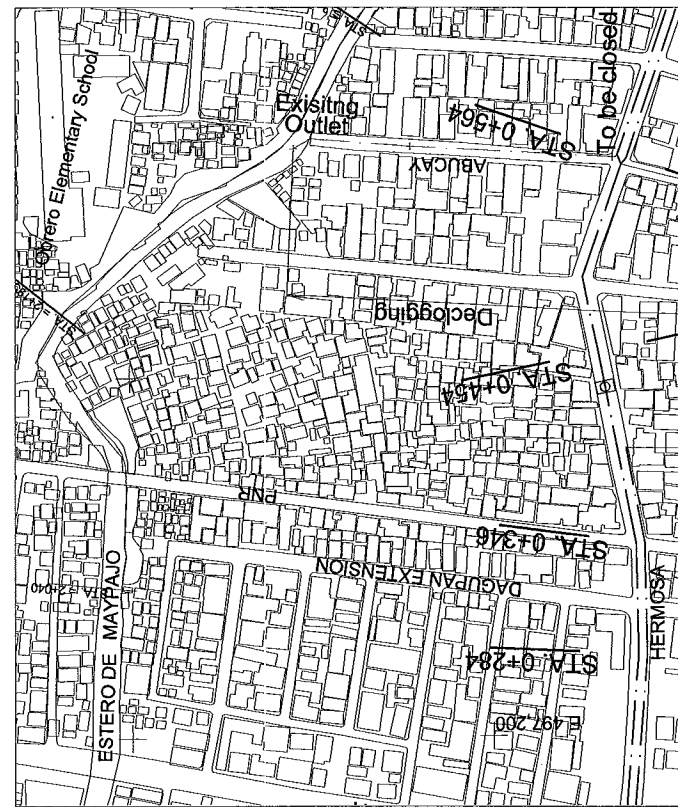
THE STUDY ON DRAINAGE IMPROVEMENT
IN THE CORE AREA OF METROPOLITAN MANILA

SHT. CONTENTS:

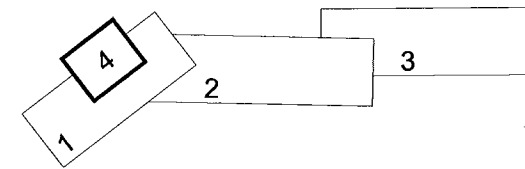
PLAN AND PROFILE
BLUMENTRITT INTERCEPTOR
(STA. 2+131 - 3+268)

SHT. NO

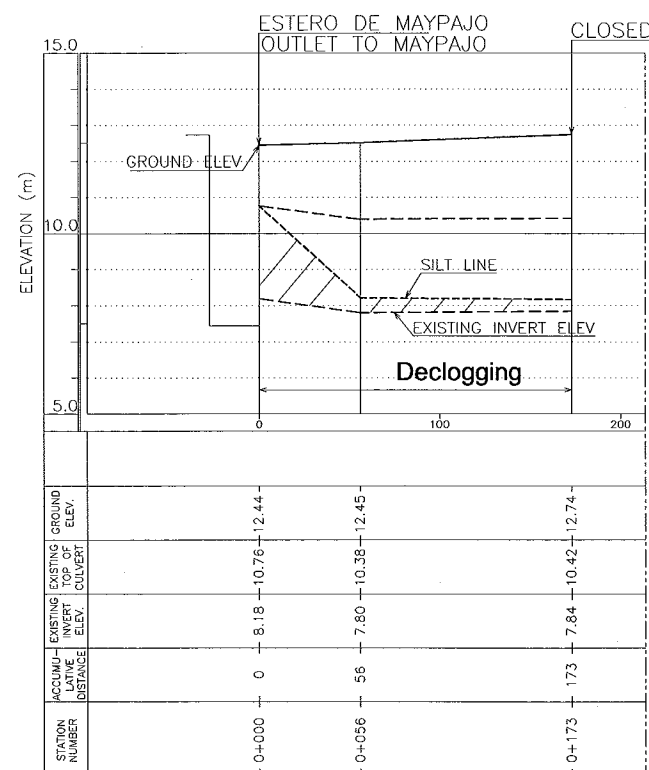
13 of 37



PLAN OF BLUMENTRITT INTERCEPTOR



- LEGEND
- MAINTENANCE HOLE WITH STOP-LOG GATE
 - MANHOLE TO BE MODIFIED
 - INLET FOR ROAD SURFACE FLOW



EXISTING OUTLET OF BLUMENTRITT INTERCEPTOR

CONSULTANTS

PACIFIC CONSULTANTS INTERNATIONAL
IN ASSOCIATION WITH
NIKKEN CONSULTANTS, INC.

REPUBLIC OF THE PHILIPPINES

JICA JAPAN INTERNATIONAL COOPERATION AGENCY
FOR
DEPARTMENT OF PUBLIC WORKS AND HIGHWAYS
METROPOLITAN MANILA DEVELOPMENT AUTHORITY

PROJECT & LOCATION:

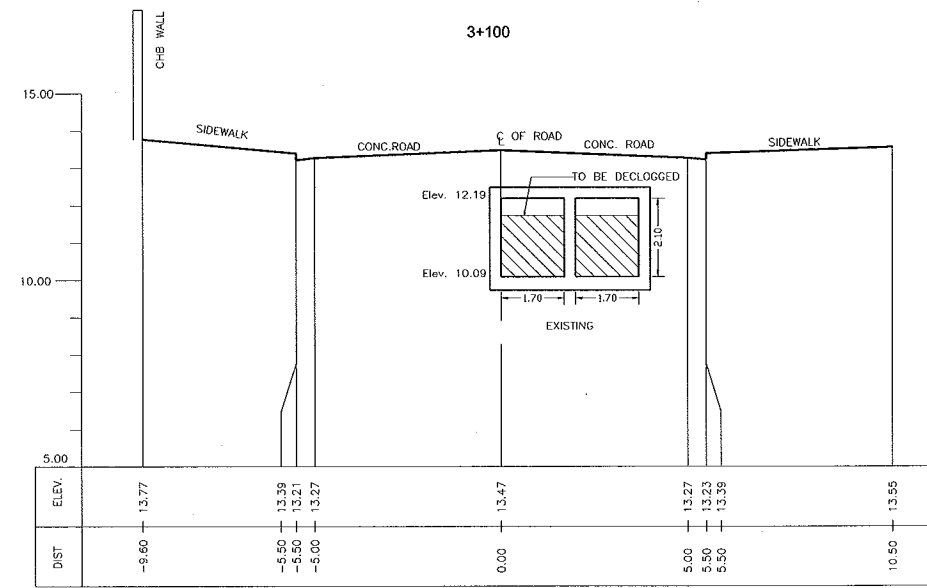
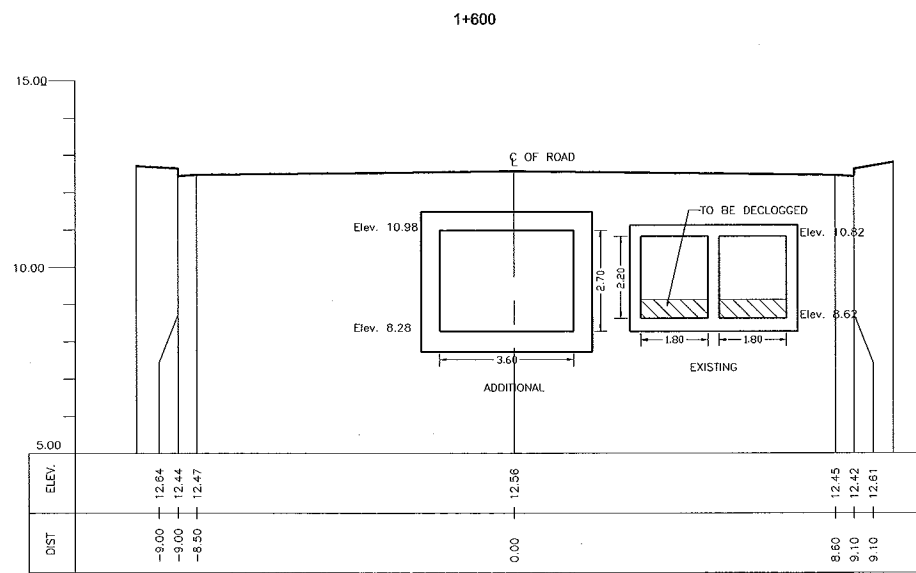
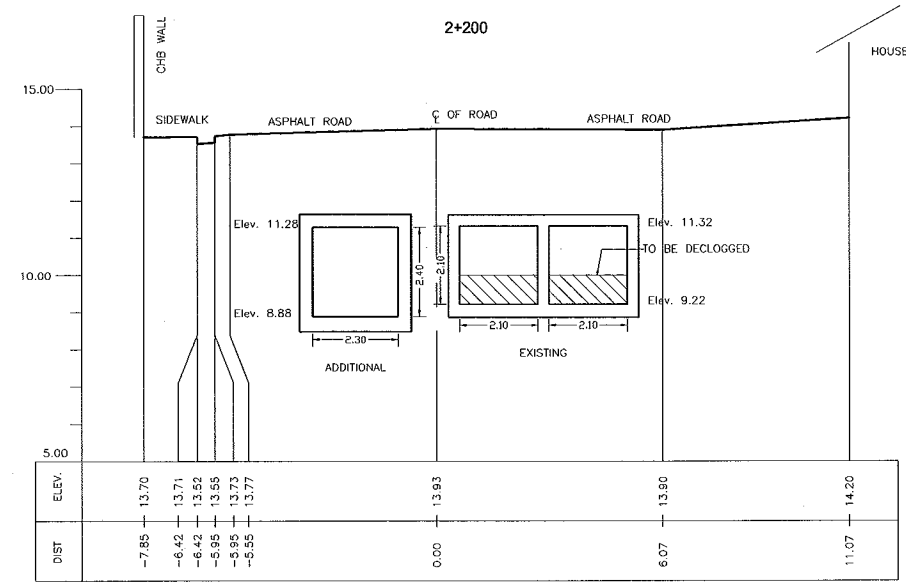
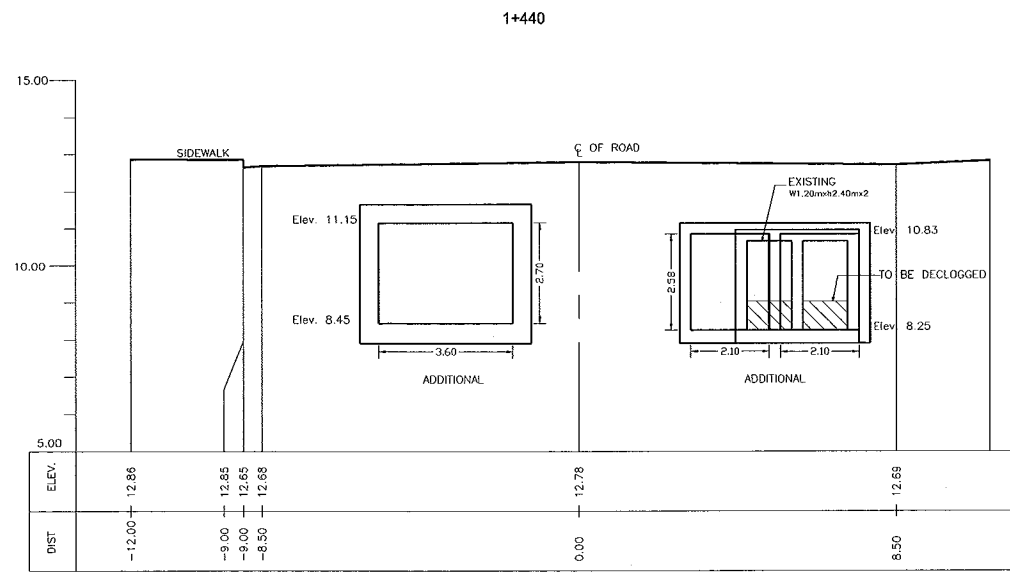
THE STUDY ON DRAINAGE IMPROVEMENT
IN THE CORE AREA OF METROPOLITAN MANILA

SHT. CONTENTS:

PLAN AND PROFILE
EXISTING OUTLET OF BLUMENTRITT INTERCEPTOR
(STA. 0+000 - 0+173)

SHT. NO

14 of 37



CONSULTANTS

PACIFIC CONSULTANTS INTERNATIONAL
IN ASSOCIATION WITH
 NIKKEN CONSULTANTS, INC.

REPUBLIC OF THE PHILIPPINES

JAPAN INTERNATIONAL COOPERATION AGENCY
FOR
 DEPARTMENT OF PUBLIC WORKS AND HIGHWAYS
 METROPOLITAN MANILA DEVELOPMENT
AUTHORITY

PROJECT & LOCATION:

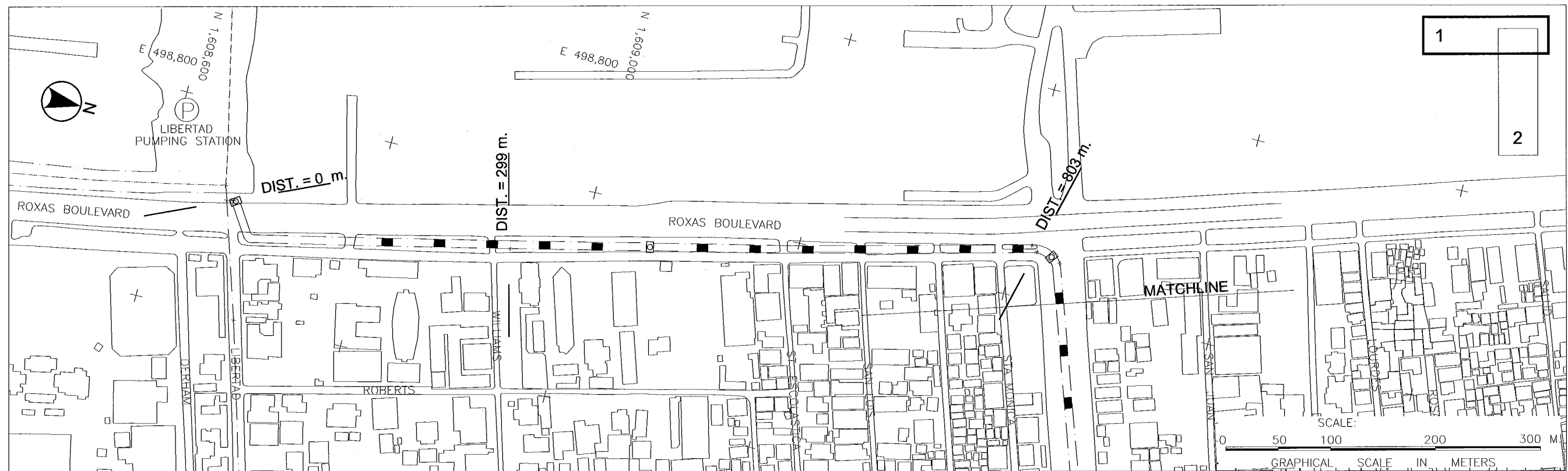
THE STUDY ON DRAINAGE IMPROVEMENT
IN THE CORE AREA OF METROPOLITAN MANILA

SHT. CONTENTS:

TYPICAL SECTIONS
BLUMENTRITT INTERCEPTOR
(STA. 1+440 ~ STA. 3+100)

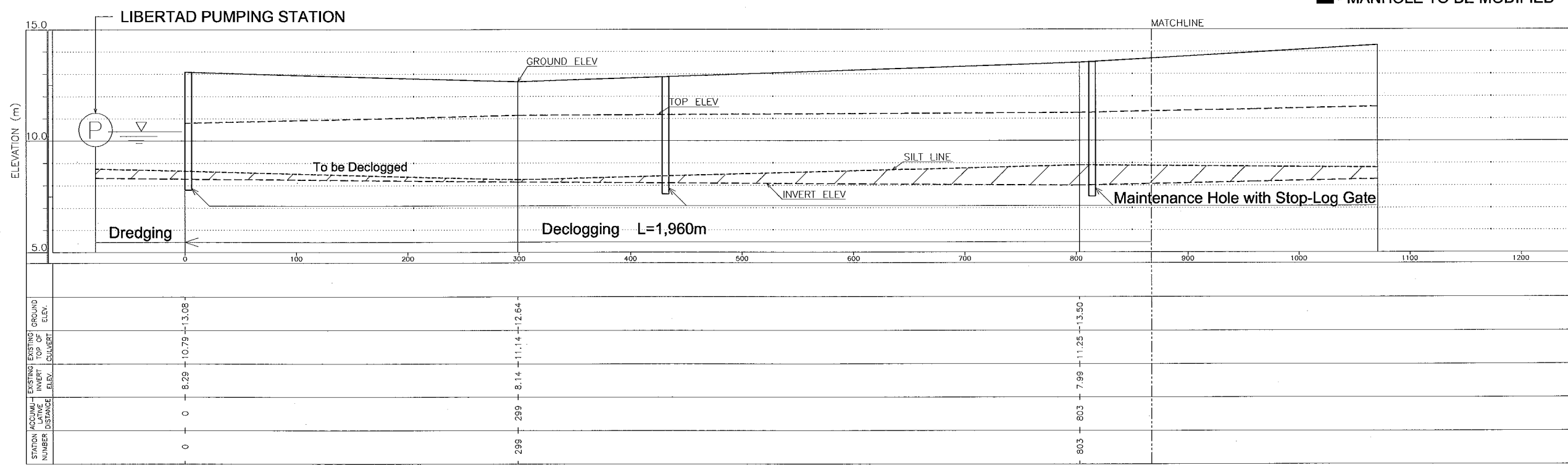
SHT. NO

16 of 37



PLAN OF BUENDIA OUTFALL

- ☐ - MAINTENANCE HOLE WITH STOP-LOG GATE
- - MANHOLE TO BE MODIFIED



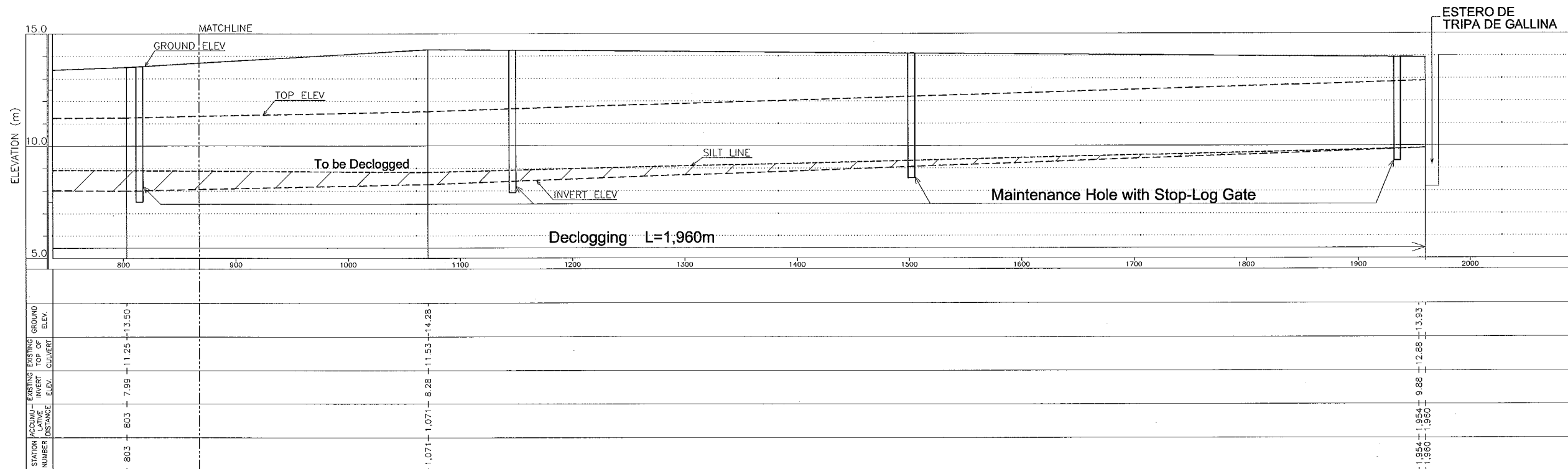
PROFILE OF BUENDIA OUTFALL

CONSULTANTS PACIFIC CONSULTANTS INTERNATIONAL IN ASSOCIATION WITH NIKKEN CONSULTANTS, INC.		REPUBLIC OF THE PHILIPPINES JICA JAPAN INTERNATIONAL COOPERATION AGENCY FOR DEPARTMENT OF PUBLIC WORKS AND HIGHWAYS METROPOLITAN MANILA DEVELOPMENT AUTHORITY		PROJECT & LOCATION: THE STUDY ON DRAINAGE IMPROVEMENT IN THE CORE AREA OF METROPOLITAN MANILA	SHT. CONTENTS: PLAN AND PROFILE BUENDIA OUTFALL (SD14B) (DIST. 0 ~ 803m.)	SHT. NO 17 of 37
--	--	--	--	--	---	----------------------------



PLAN OF BUENDIA OUTFALL

- ☐ - MAINTENANCE HOLE WITH STOP-LOG GATE
- - MANHOLE TO BE MODIFIED



PROFILE OF BUENDIA OUTFALL

CONSULTANTS

PACIFIC CONSULTANTS INTERNATIONAL
IN ASSOCIATION WITH
NIKKEN CONSULTANTS, INC.

REPUBLIC OF THE PHILIPPINES

JICA JAPAN INTERNATIONAL COOPERATION AGENCY
FOR
DEPARTMENT OF PUBLIC WORKS AND HIGHWAYS
METROPOLITAN MANILA DEVELOPMENT AUTHORITY

PROJECT & LOCATION:

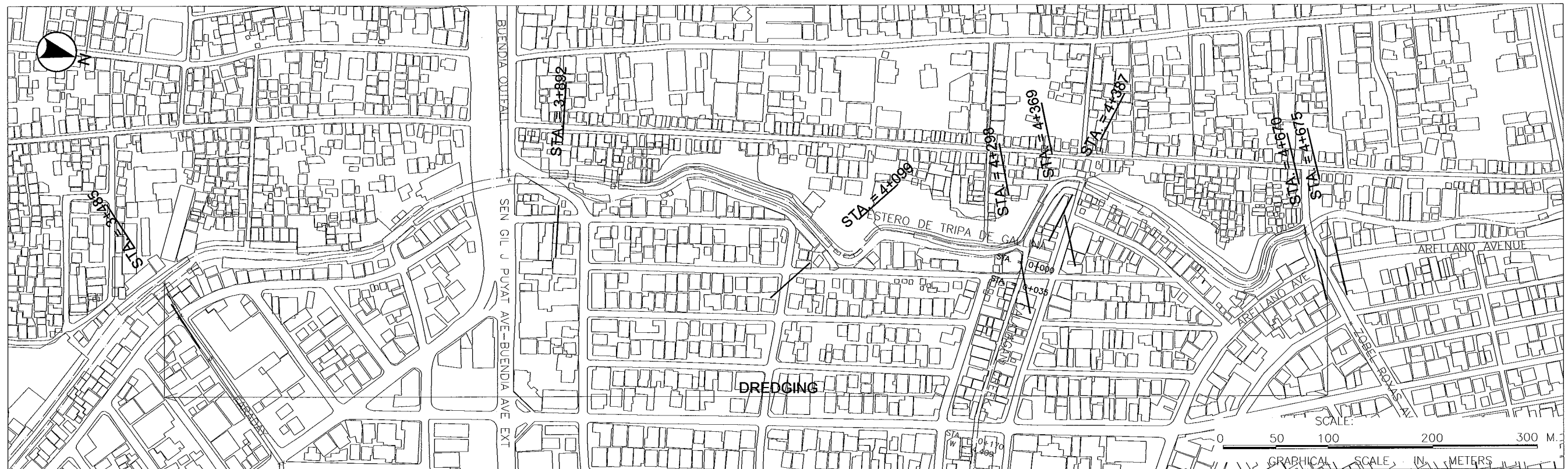
THE STUDY ON DRAINAGE IMPROVEMENT
IN THE CORE AREA OF METROPOLITAN MANILA

SHT. CONTENTS:

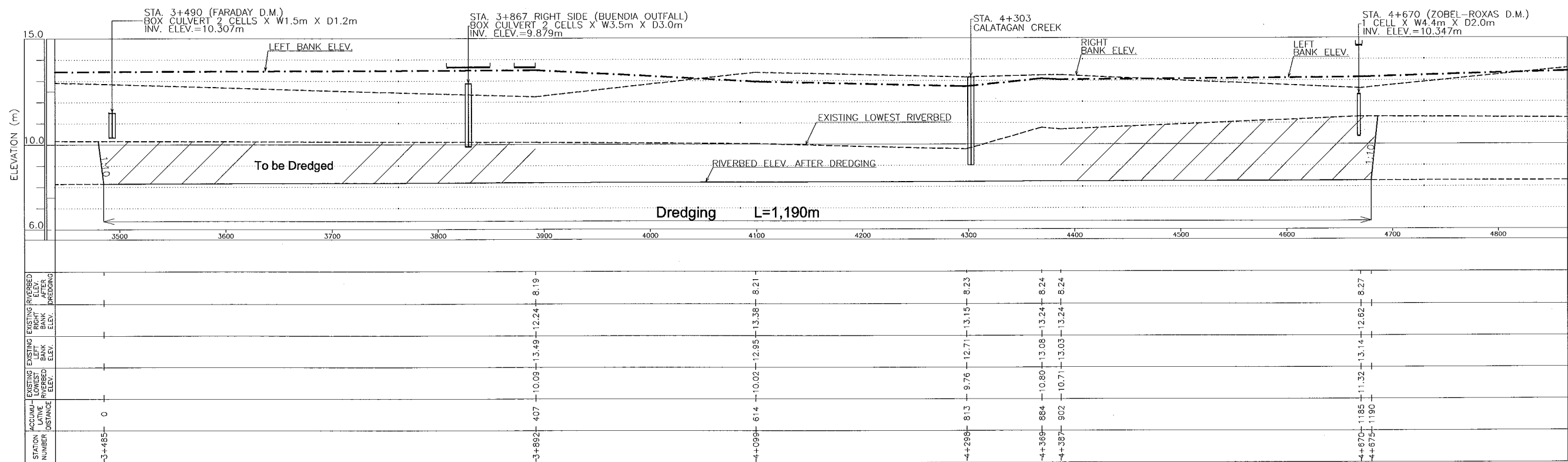
PLAN AND PROFILE
BUENDIA OUTFALL (SD14B)
(DIST. 803m. ~ 1,960m.)

SHT. NO

18 of 37



PLAN OF TRIPA DE GALLINA



PROFILE OF TRIPA DE GALLINA

CONSULTANTS

PACIFIC CONSULTANTS INTERNATIONAL
IN ASSOCIATION WITH
 NIKKEN CONSULTANTS, INC.

REPUBLIC OF THE PHILIPPINES

JAPAN INTERNATIONAL COOPERATION AGENCY
FOR
 DEPARTMENT OF PUBLIC WORKS AND HIGHWAYS
 METROPOLITAN MANILA DEVELOPMENT AUTHORITY

PROJECT & LOCATION:

THE STUDY ON DRAINAGE IMPROVEMENT
IN THE CORE AREA OF METROPOLITAN MANILA

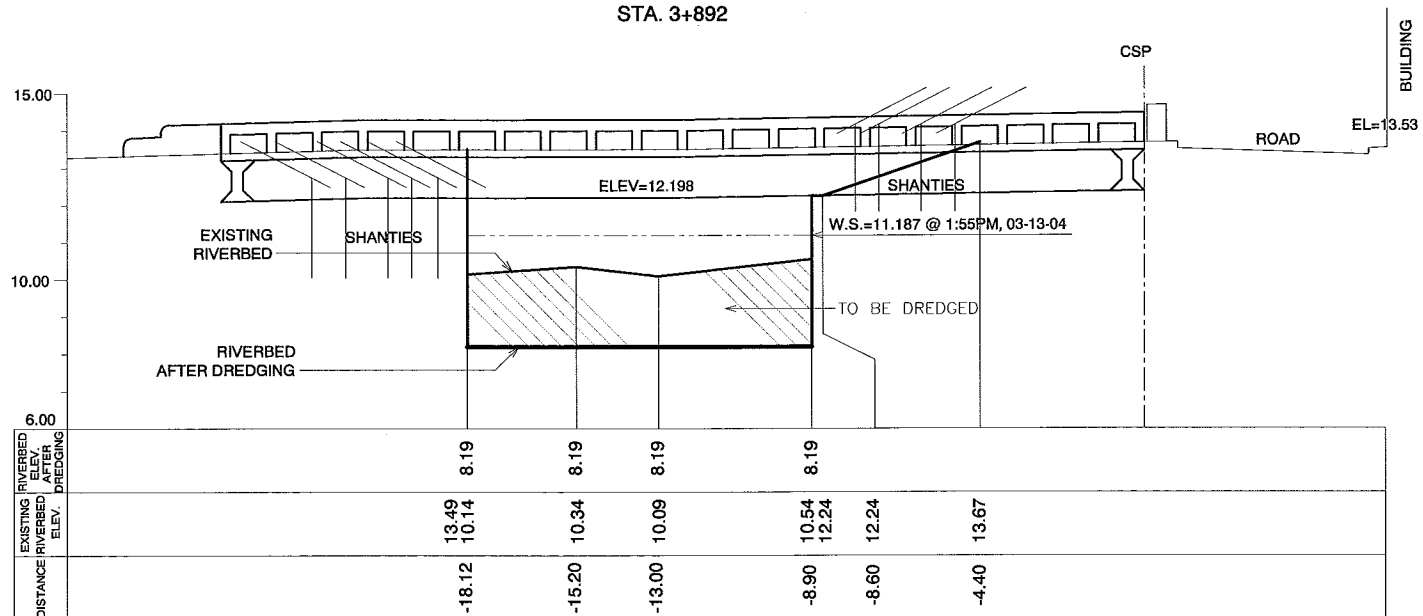
SHT. CONTENTS:

PLAN AND PROFILE
ESTERO TRIPA DE GALLINA (SE09)
(STA. 3+485 ~ STA. 4+675)

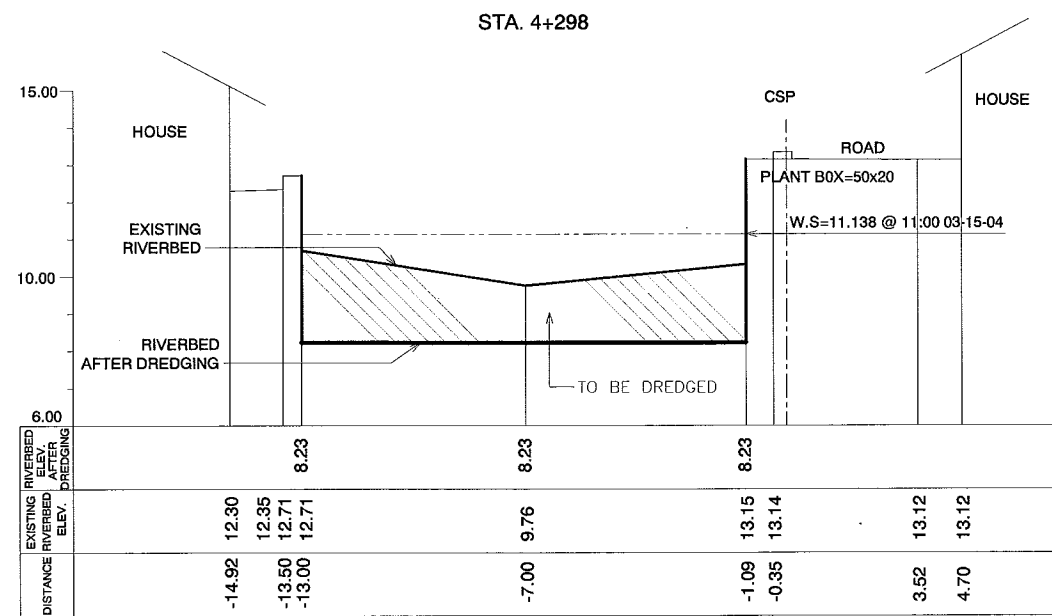
SHT. NO

19 of 37

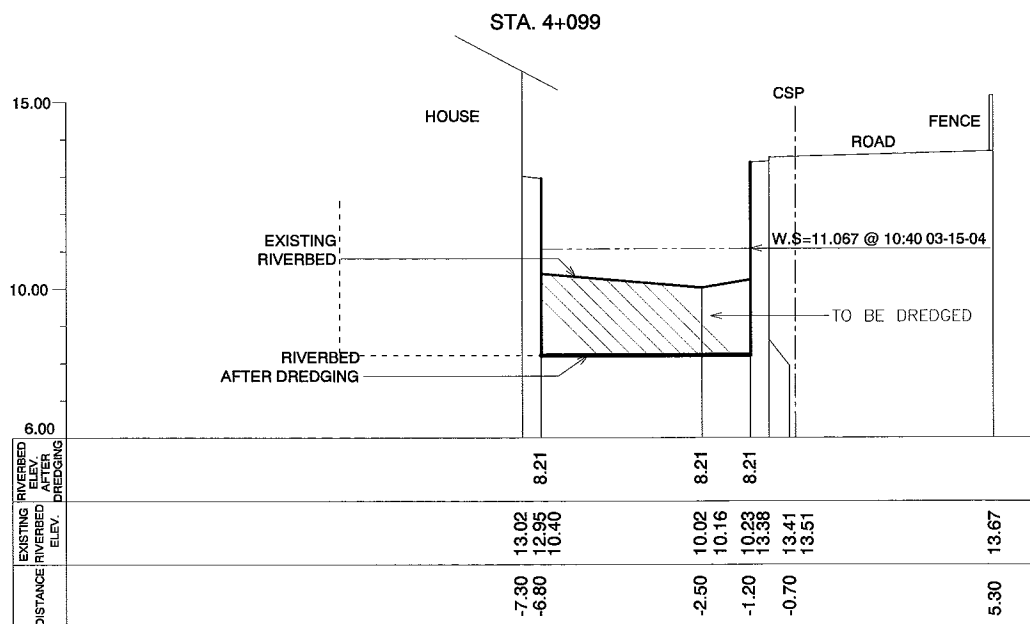
STA. 3+892



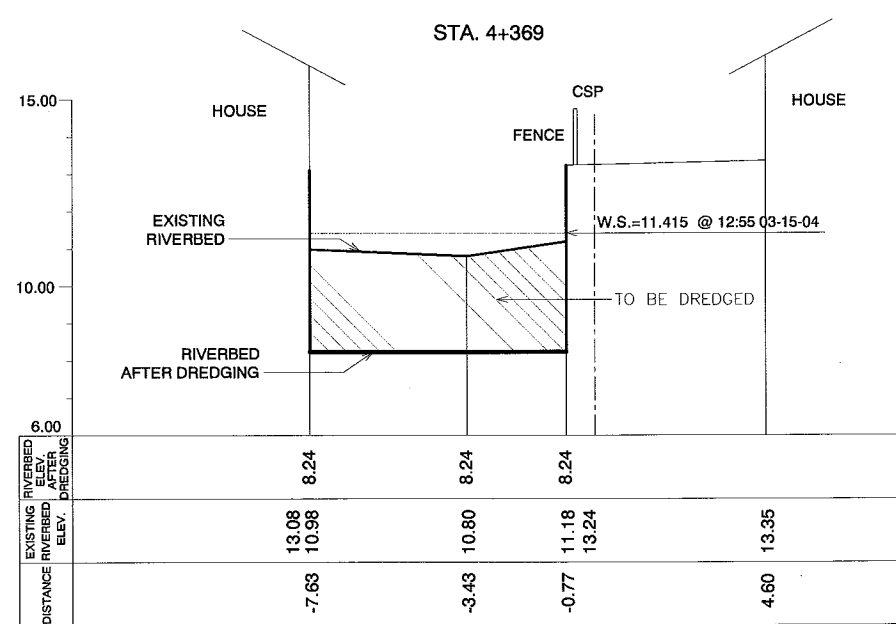
STA. 4+298



STA. 4+099



STA. 4+369



CONSULTANTS

PACIFIC CONSULTANTS INTERNATIONAL
IN ASSOCIATION WITH
NIKKEN CONSULTANTS, INC.

REPUBLIC OF THE PHILIPPINES

JICA JAPAN INTERNATIONAL COOPERATION AGENCY
FOR
DEPARTMENT OF PUBLIC WORKS AND HIGHWAYS
METROPOLITAN MANILA DEVELOPMENT AUTHORITY

PROJECT & LOCATION:

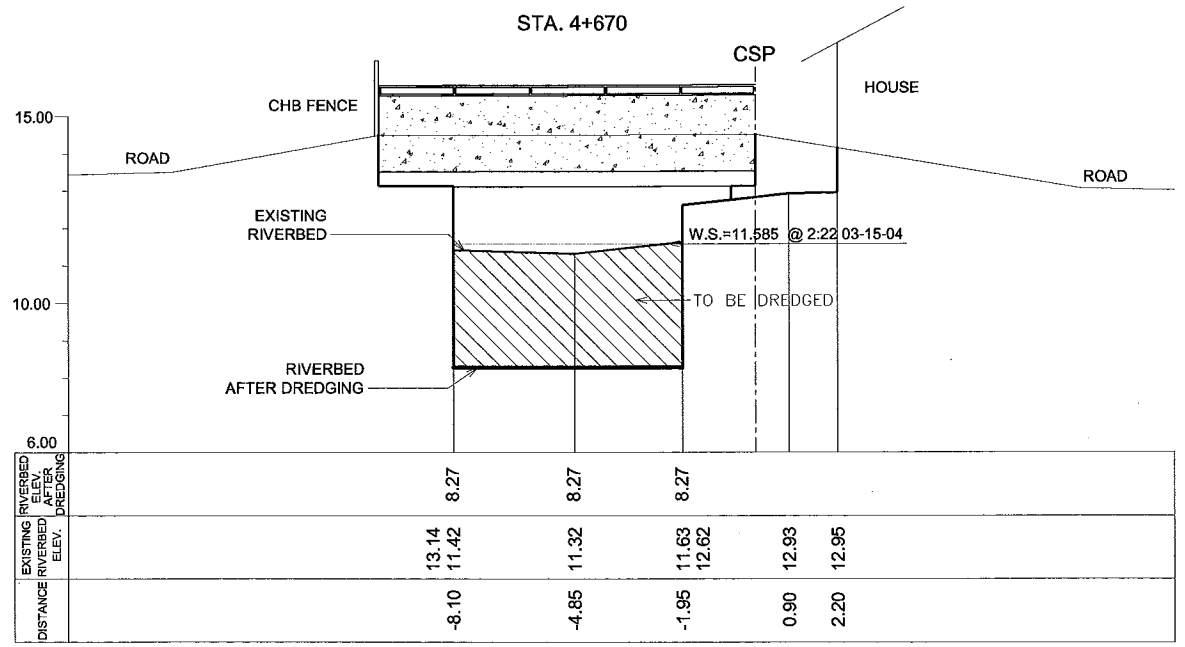
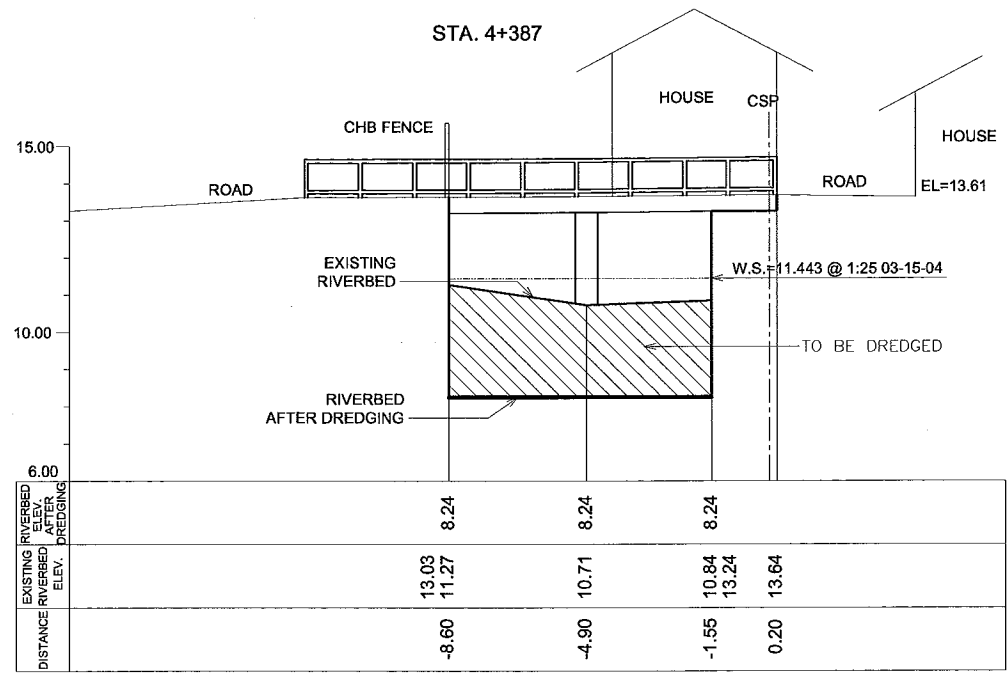
THE STUDY ON DRAINAGE IMPROVEMENT
IN THE CORE AREA OF METROPOLITAN MANILA

SHT. CONTENTS:

CROSS-SECTION LOCATION
ESTERO TRIPA DE GALLINA (SE09)
(STA. 3+892 ~ STA. 4+369)

SHT. NO

20 of 37



CONSULTANTS

PACIFIC CONSULTANTS INTERNATIONAL
IN ASSOCIATION WITH
 NIKKEN CONSULTANTS, INC.

REPUBLIC OF THE PHILIPPINES

JAPAN INTERNATIONAL COOPERATION AGENCY
FOR
 DEPARTMENT OF PUBLIC WORKS AND HIGHWAYS
 METROPOLITAN MANILA DEVELOPMENT
AUTHORITY

PROJECT & LOCATION:

THE STUDY ON DRAINAGE IMPROVEMENT
IN THE CORE AREA OF METROPOLITAN MANILA

SHT. CONTENTS:

CROSS-SECTION LOCATION
ESTERO TRIPA DE GALLINA (SE09)
(STA. 4+387 ~ STA. 4+670)

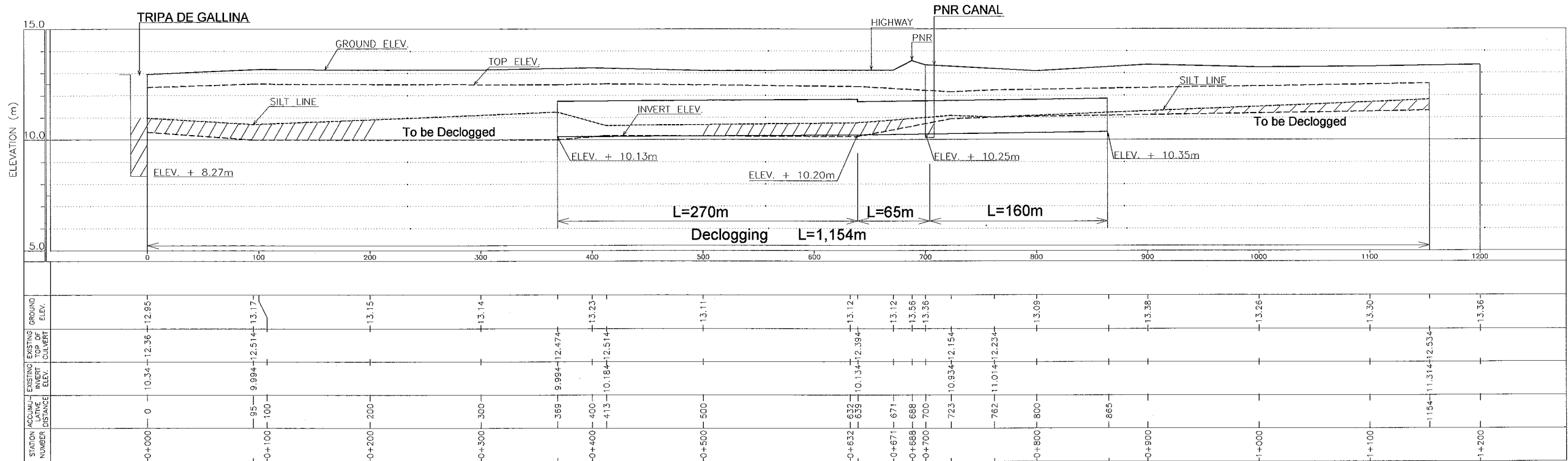
SHT. NO

21 of 37



PLAN OF ZOBEL ROXAS DM

LEGEND ■ - MAINTENANCE HOLE TO BE MODIFIED



PROFILE OF ZOBEL ROXAS DM

CONSULTANTS

PACIFIC CONSULTANTS INTERNATIONAL
IN ASSOCIATION WITH
NIKKEN CONSULTANTS, INC.

REPUBLIC OF THE PHILIPPINES

JICA JAPAN INTERNATIONAL COOPERATION AGENCY
FOR
DEPARTMENT OF PUBLIC WORKS AND HIGHWAYS
METROPOLITAN MANILA DEVELOPMENT AUTHORITY

PROJECT & LOCATION:

THE STUDY ON DRAINAGE IMPROVEMENT
IN THE CORE AREA OF METROPOLITAN MANILA

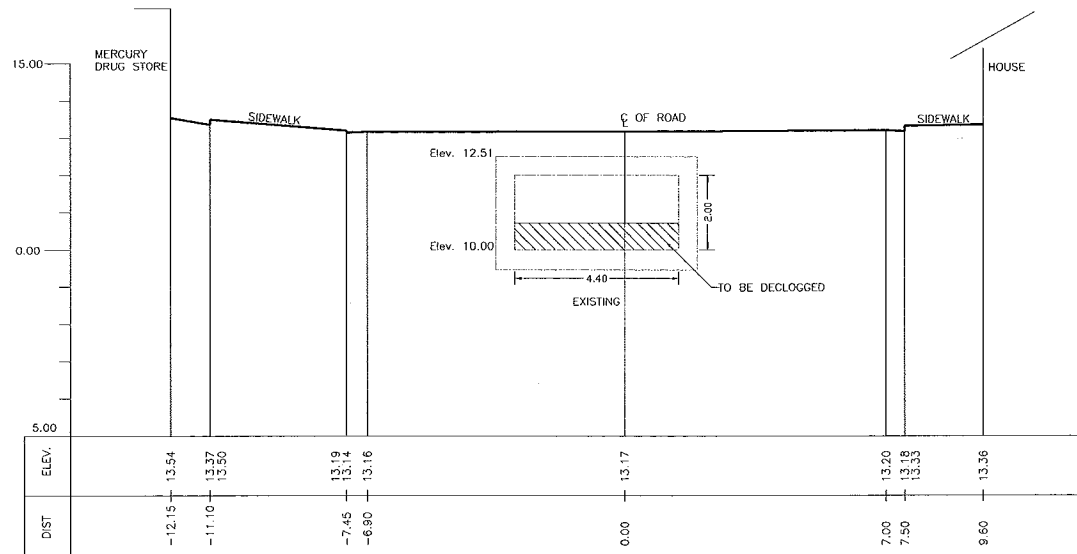
SHT. CONTENTS:

PLAN AND PROFILE
ZOBEL ROXAS (SD09) DM
(STA. 0+000 - STA. 1+200)

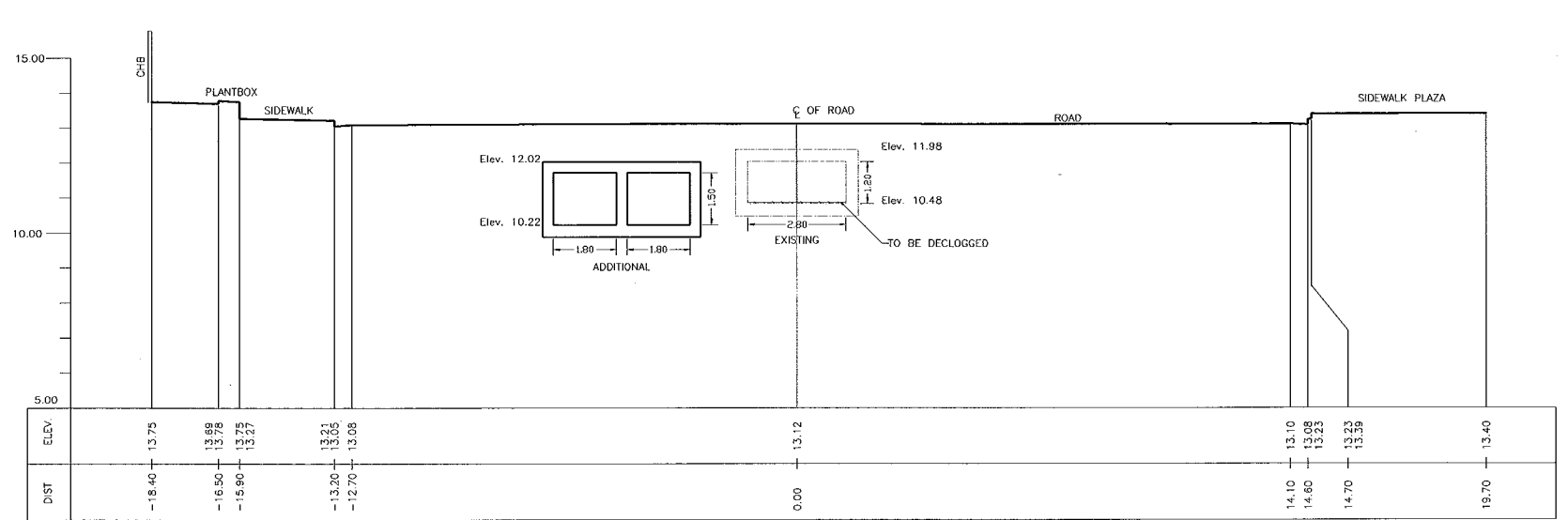
SHT. NO

22 of 37

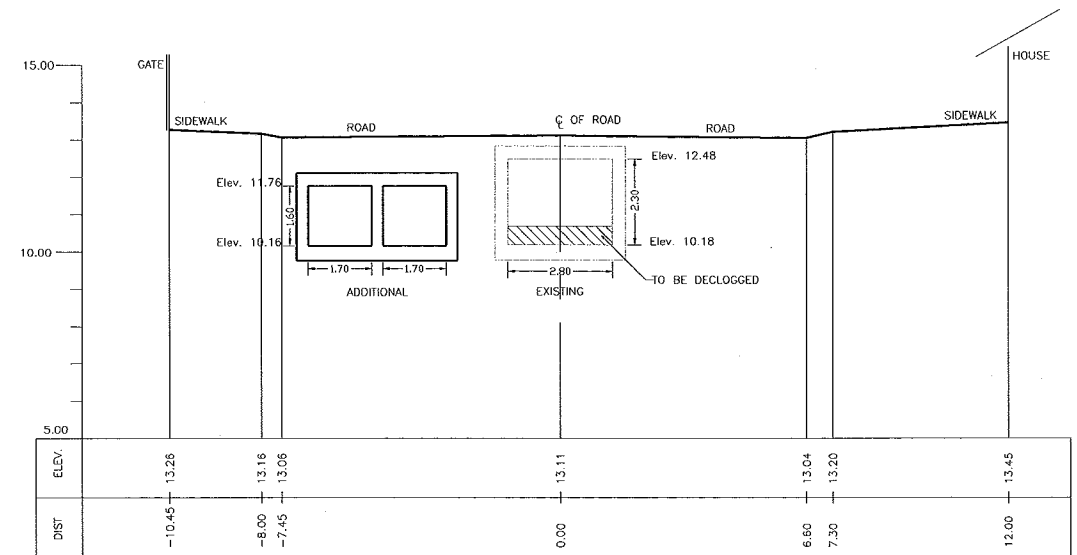
STA. 0+100



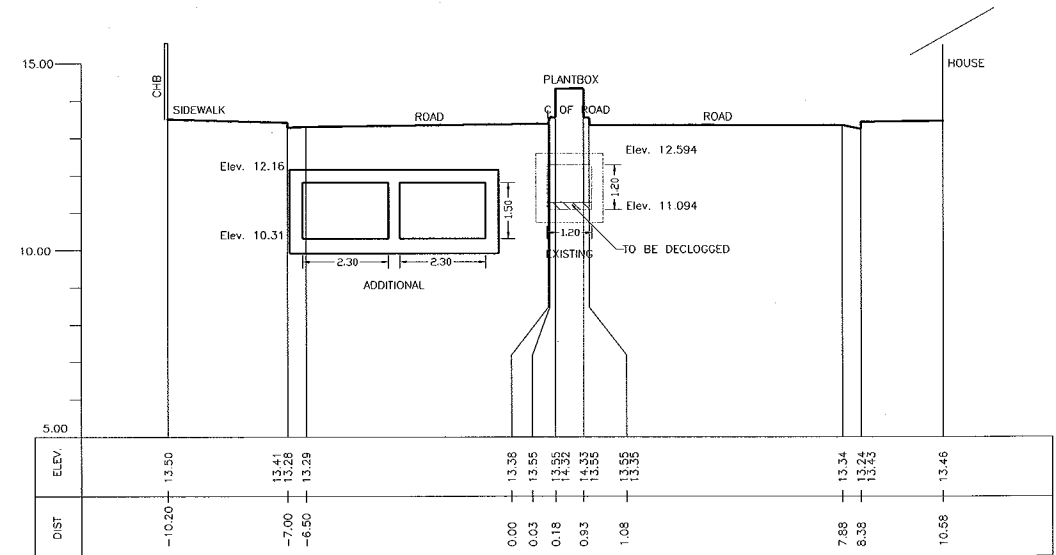
STA. 0+671



STA. 0+500



STA. 0+900



CONSULTANTS

PACIFIC CONSULTANTS INTERNATIONAL
IN ASSOCIATION WITH
NIKKEN CONSULTANTS, INC.

REPUBLIC OF THE PHILIPPINES

JICA JAPAN INTERNATIONAL COOPERATION AGENCY
FOR
DEPARTMENT OF PUBLIC WORKS AND HIGHWAYS
METROPOLITAN MANILA DEVELOPMENT AUTHORITY

PROJECT & LOCATION:

THE STUDY ON DRAINAGE IMPROVEMENT
IN THE CORE AREA OF METROPOLITAN MANILA

SHT. CONTENTS:

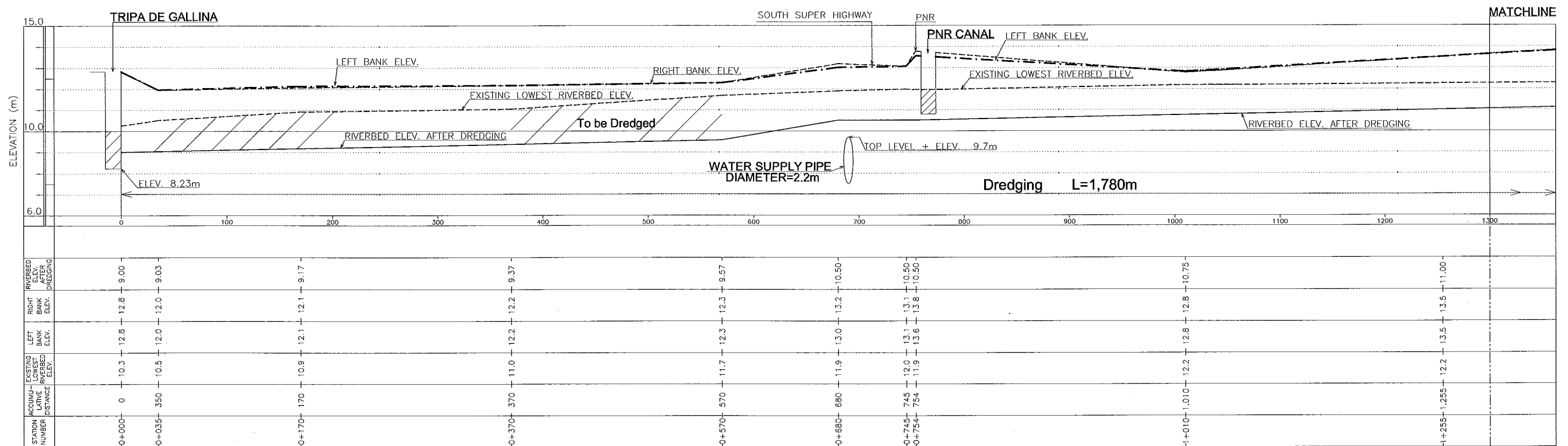
TYPICAL SECTIONS
ZOBEL ROXAS DRAINAGE MAIN
(STA. 0+100 ~ STA. 0+900)

SHT. NO

23 of 37



PLAN OF CALATAGAN CREEK AND PASONG TAMO DM



PROFILE OF CALATAGAN CREEK AND PASONG TAMO DM

CONSULTANTS

PACIFIC CONSULTANTS INTERNATIONAL
IN ASSOCIATION WITH
NIKKEN CONSULTANTS, INC.

REPUBLIC OF THE PHILIPPINES

JICA JAPAN INTERNATIONAL COOPERATION AGENCY
FOR
DEPARTMENT OF PUBLIC WORKS AND HIGHWAYS
METROPOLITAN MANILA DEVELOPMENT AUTHORITY

PROJECT & LOCATION:

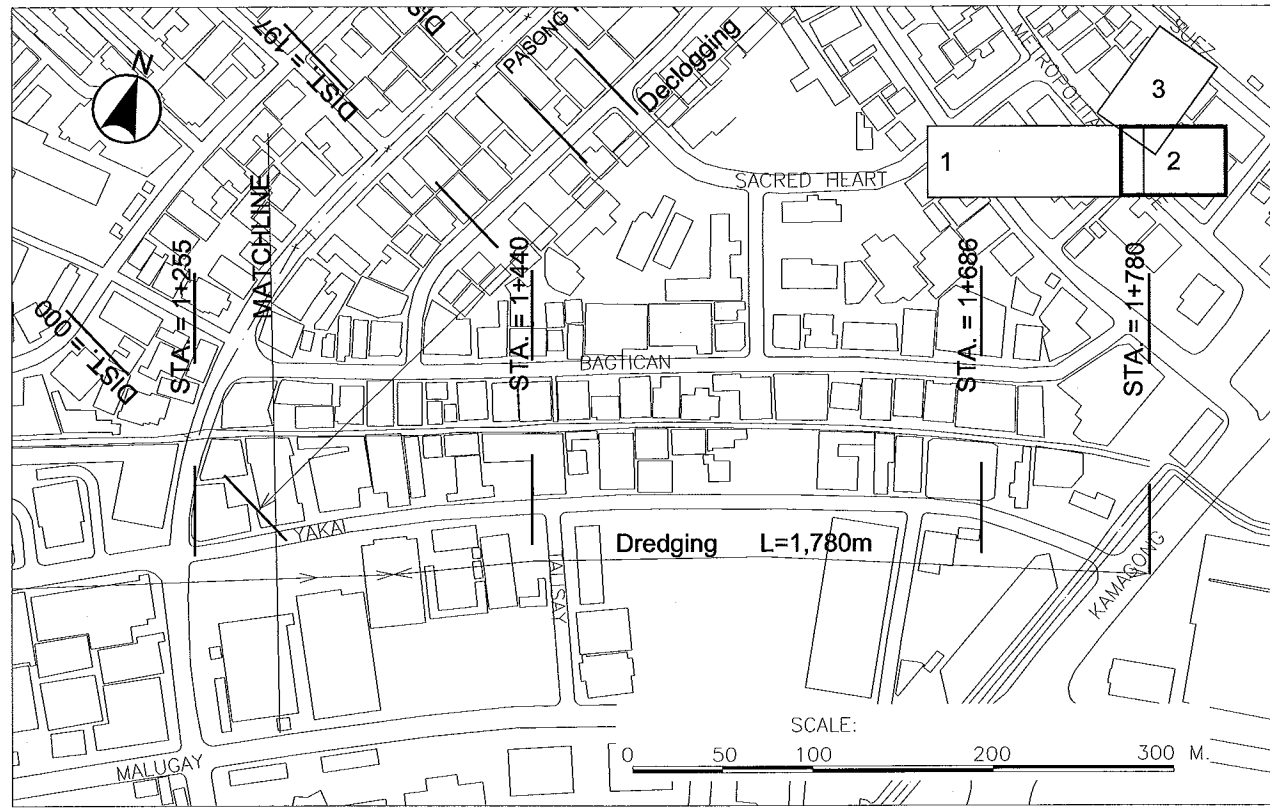
THE STUDY ON DRAINAGE IMPROVEMENT
IN THE CORE AREA OF METROPOLITAN MANILA

SHT. CONTENTS:

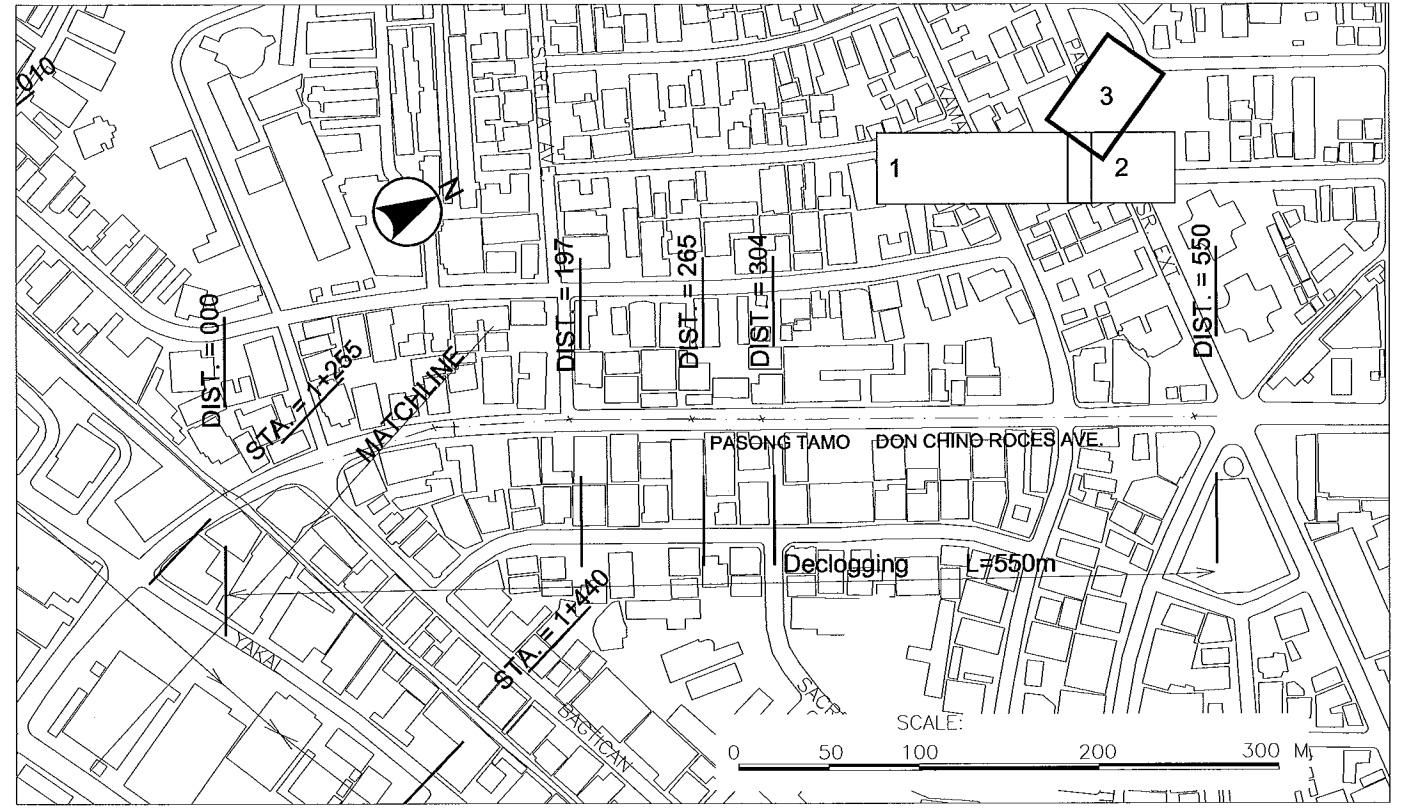
PLAN AND PROFILE
CALATAGAN CREEK AND PASONG TAMO DM
(STA. 0+000 ~ STA. 1+255) AND (DIST. 000 ~ 350)

SHT. NO

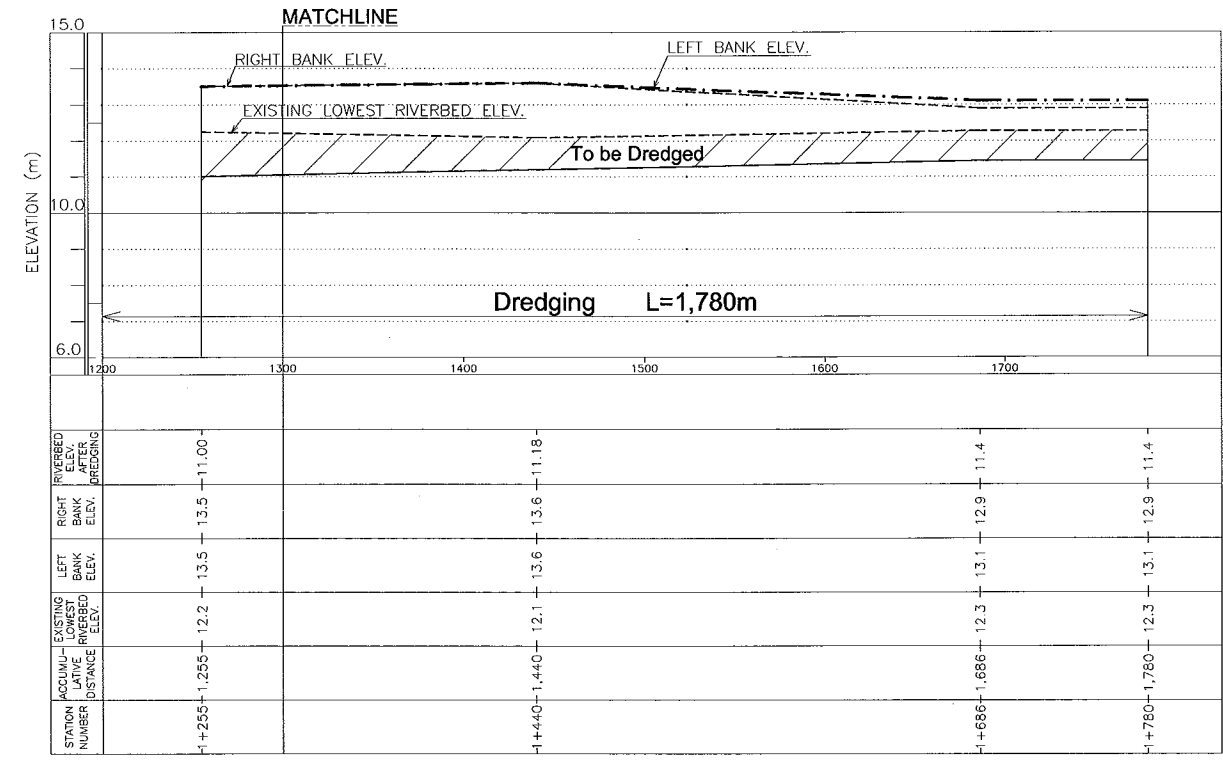
24 of 37



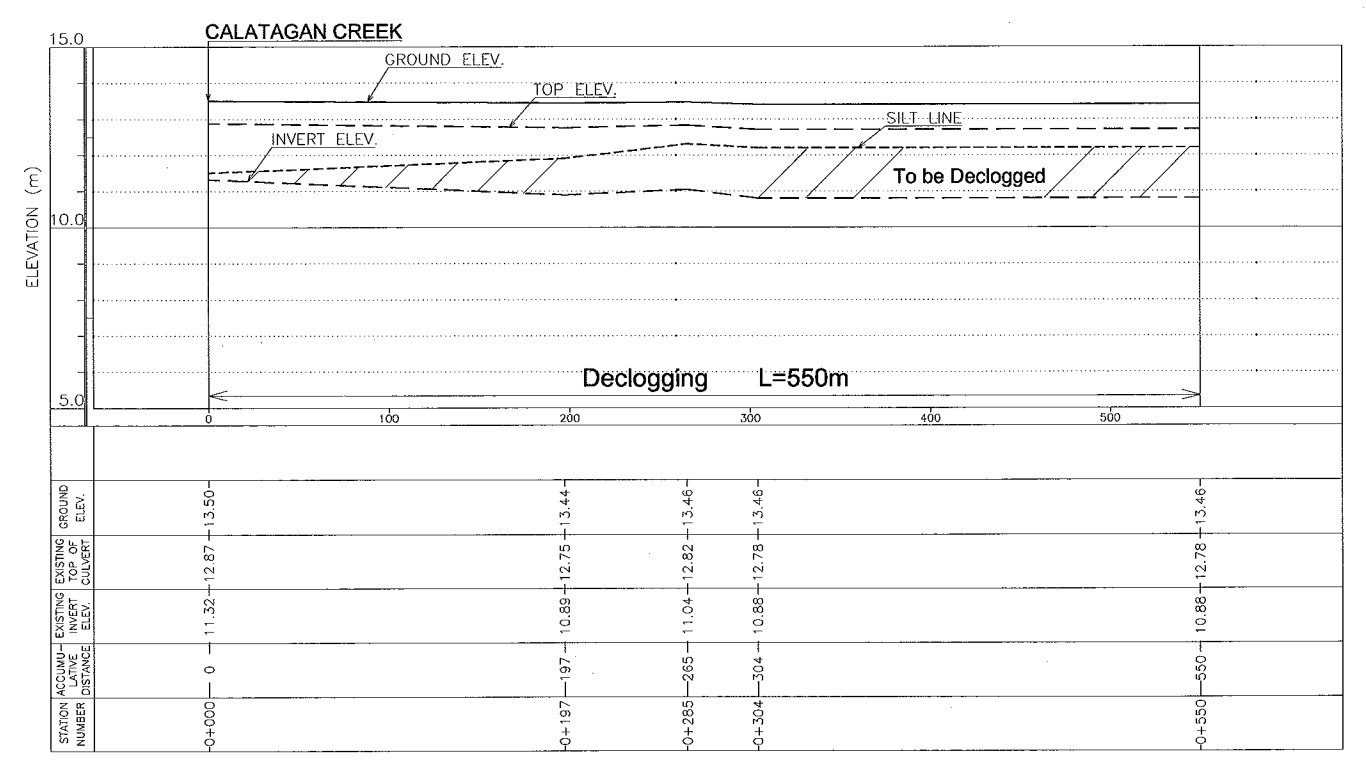
PLAN OF CALATAGAN CREEK



PLAN OF PASONG TAMO DM



PROFILE OF CALATAGAN CREEK



PROFILE OF PASONG TAMO DM

CONSULTANTS

PACIFIC CONSULTANTS INTERNATIONAL
IN ASSOCIATION WITH
 NIKKEN CONSULTANTS, INC.

REPUBLIC OF THE PHILIPPINES

JICA JAPAN INTERNATIONAL COOPERATION AGENCY
FOR
 DEPARTMENT OF PUBLIC WORKS AND HIGHWAYS
 METROPOLITAN MANILA DEVELOPMENT AUTHORITY

PROJECT & LOCATION:

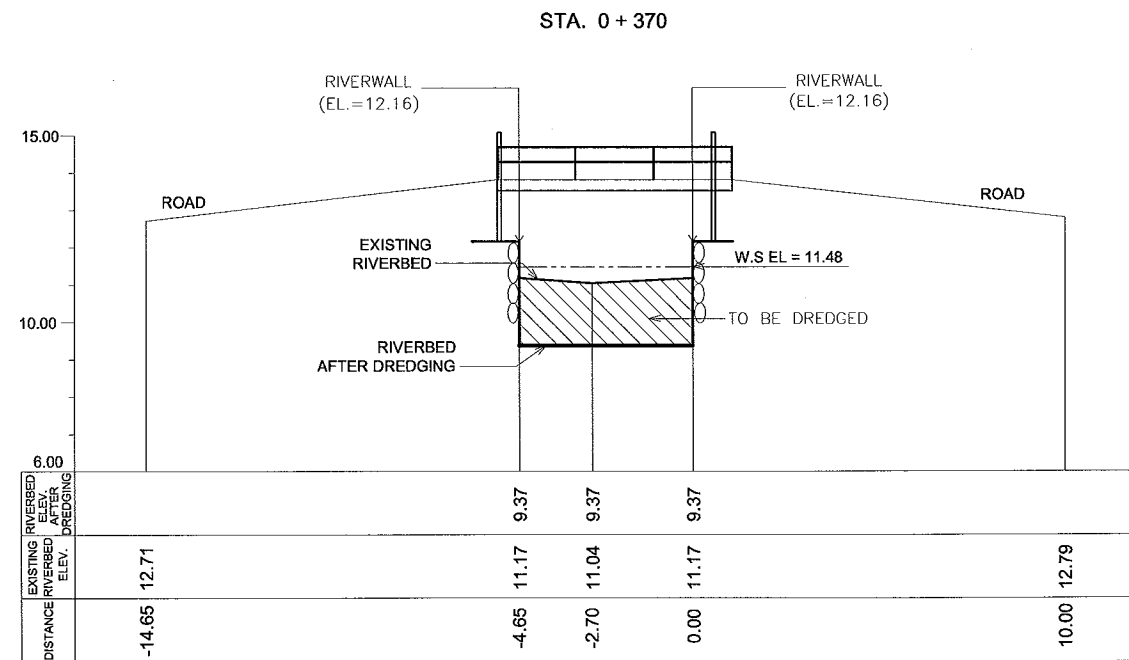
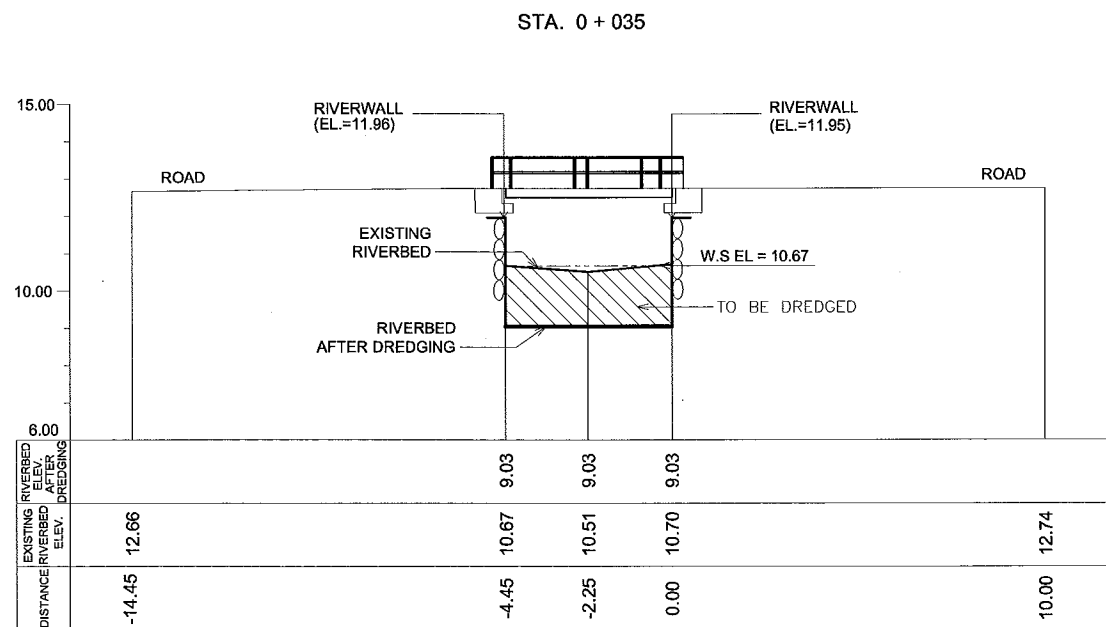
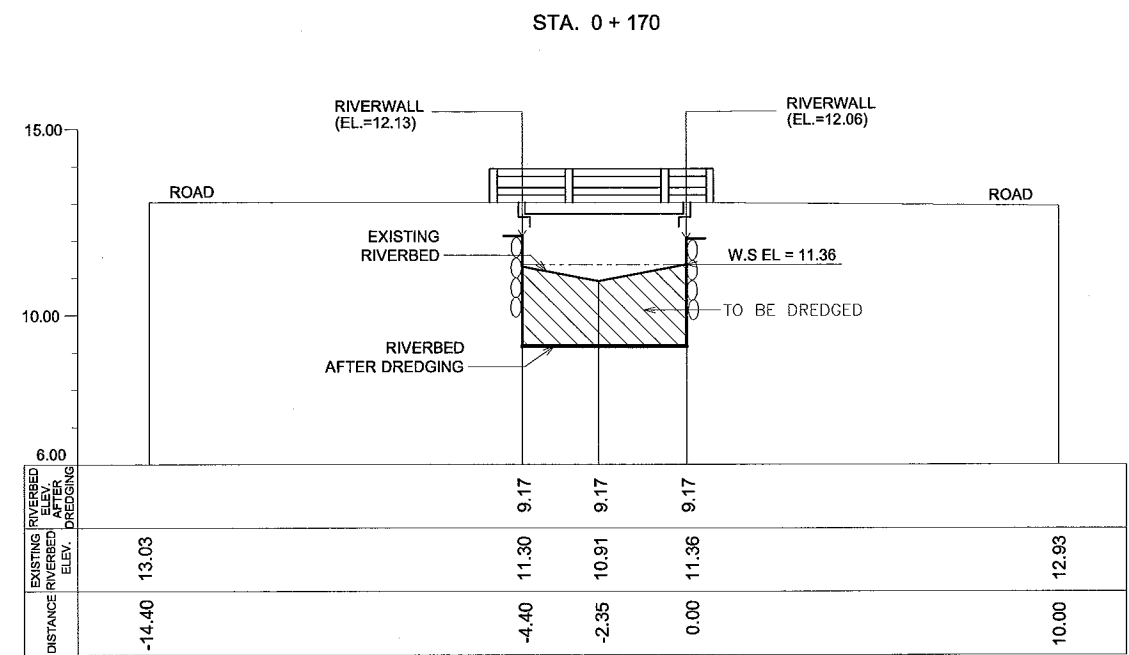
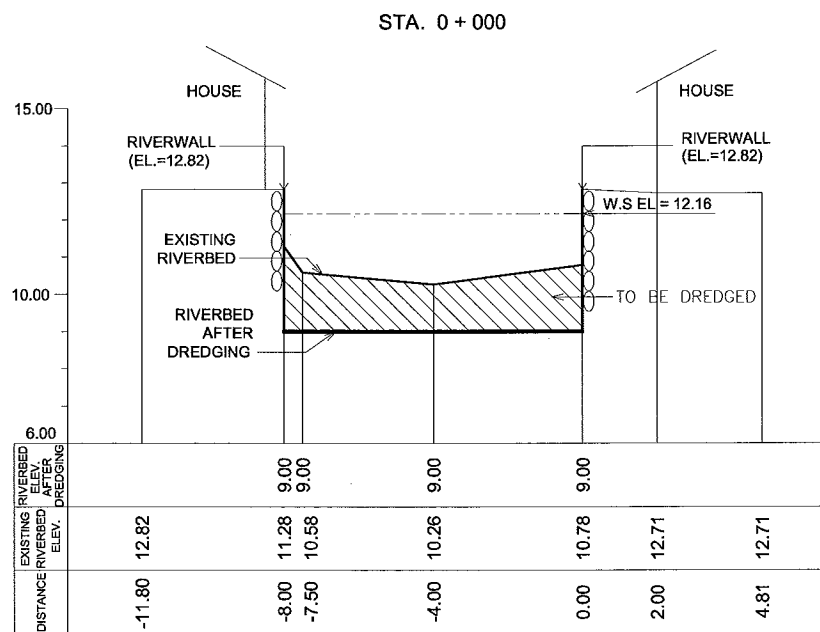
THE STUDY ON DRAINAGE IMPROVEMENT
IN THE CORE AREA OF METROPOLITAN MANILA

SHT. CONTENTS:

PLAN AND PROFILE
CALATAGAN CREEK AND PASONG TAMO DM
(STA. 1+010 ~ STA. 1+686) AND (DIST. 000 ~ 350)

SHT. NO

25 of 37



CONSULTANTS

PACIFIC CONSULTANTS INTERNATIONAL
IN ASSOCIATION WITH
 NIKKEN CONSULTANTS, INC.

REPUBLIC OF THE PHILIPPINES

JICA JAPAN INTERNATIONAL COOPERATION AGENCY
FOR
 DEPARTMENT OF PUBLIC WORKS AND HIGHWAYS
 METROPOLITAN MANILA DEVELOPMENT
AUTHORITY

PROJECT & LOCATION:

THE STUDY ON DRAINAGE IMPROVEMENT
IN THE CORE AREA OF METROPOLITAN MANILA

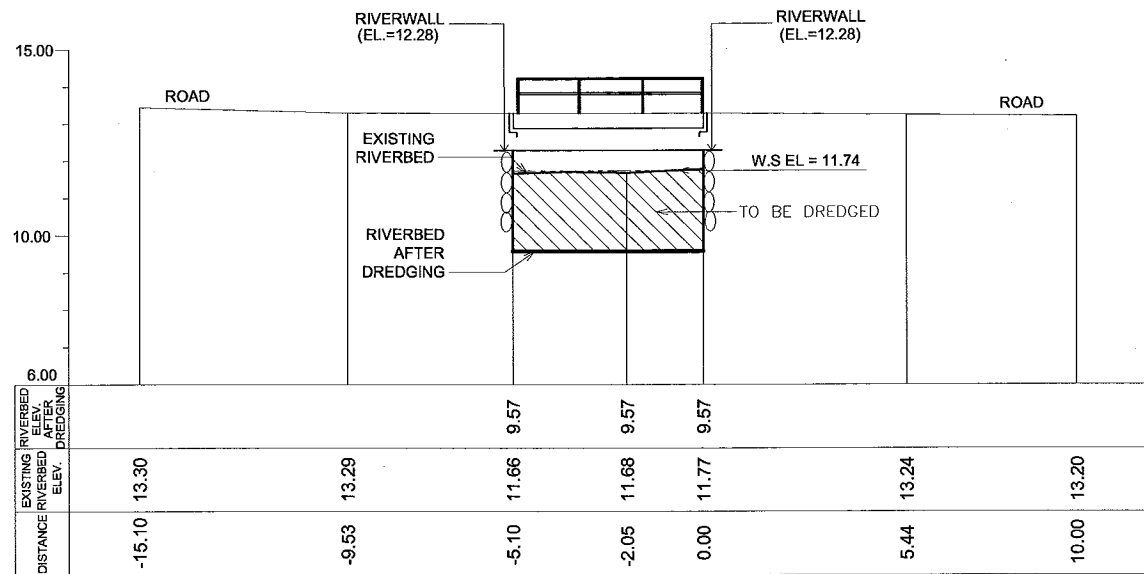
SHT. CONTENTS:

CROSS-SECTION LOCATION
CALATAGAN CREEK AND PASONG TAMO DM
(STA. 0+000 ~ STA. 0+370)

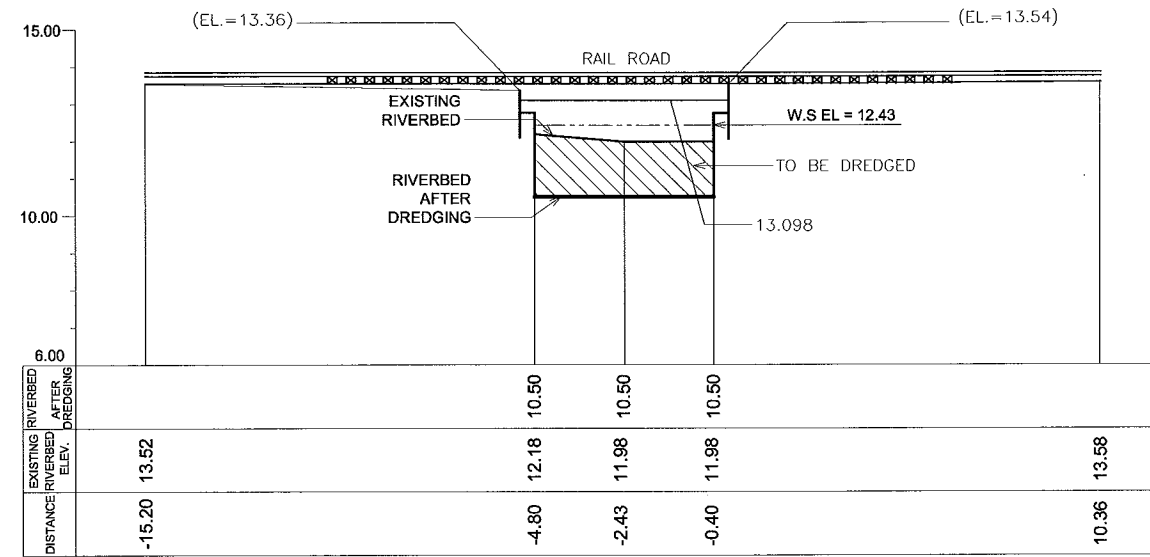
SHT. NO

26 of 37

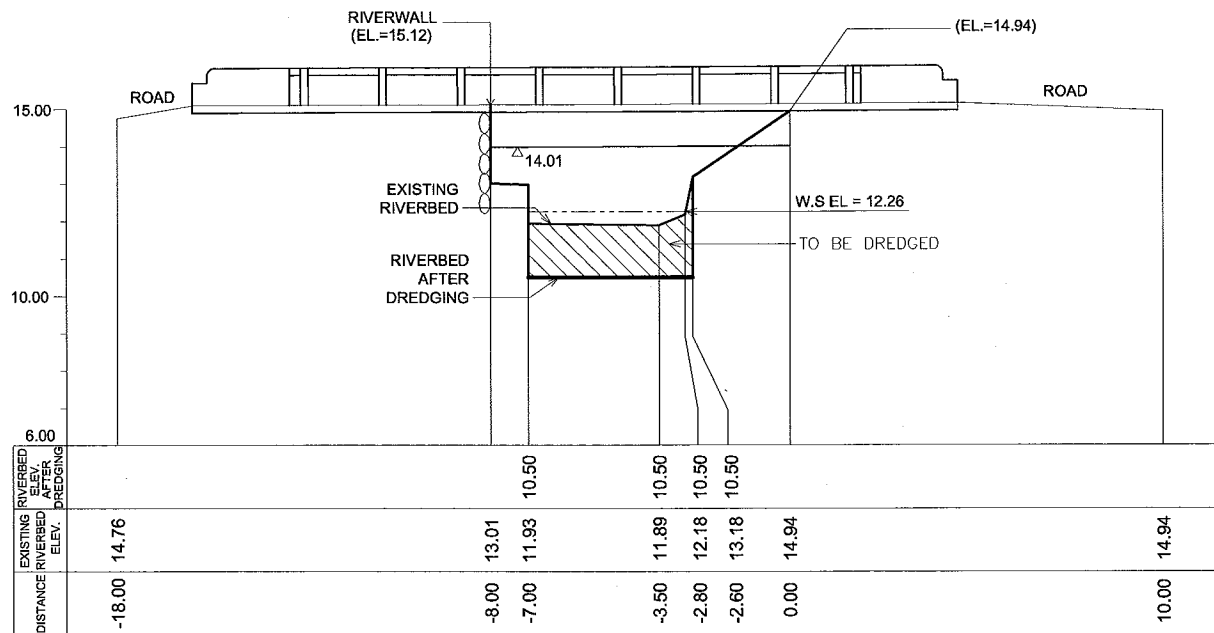
STA. 0 + 570



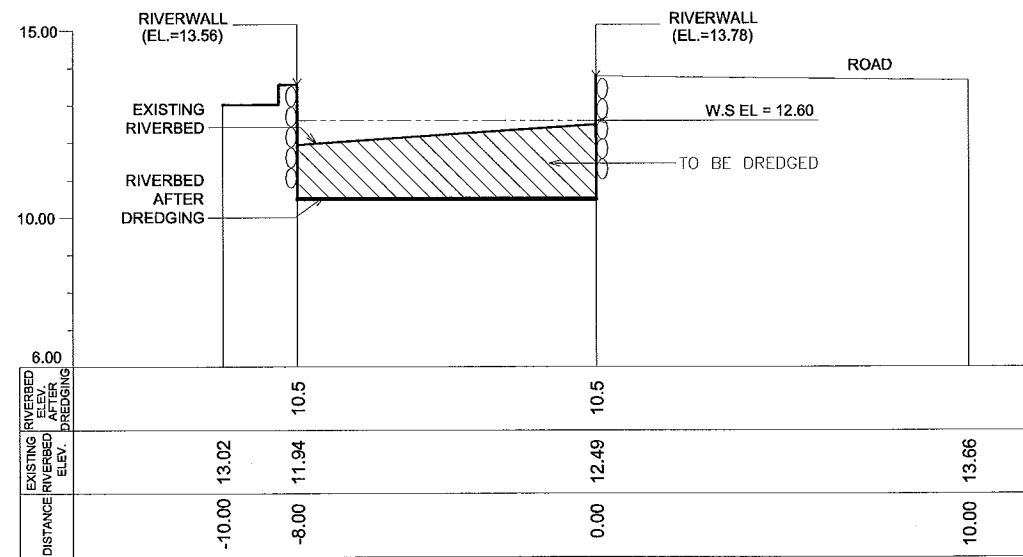
STA. 0 + 745



STA. 0 + 680



STA. 0 + 754



CONSULTANTS

PACIFIC CONSULTANTS INTERNATIONAL
IN ASSOCIATION WITH
NIKKEN CONSULTANTS, INC.

REPUBLIC OF THE PHILIPPINES

JICA JAPAN INTERNATIONAL COOPERATION AGENCY
FOR
DEPARTMENT OF PUBLIC WORKS AND HIGHWAYS
METROPOLITAN MANILA DEVELOPMENT AUTHORITY

PROJECT & LOCATION:

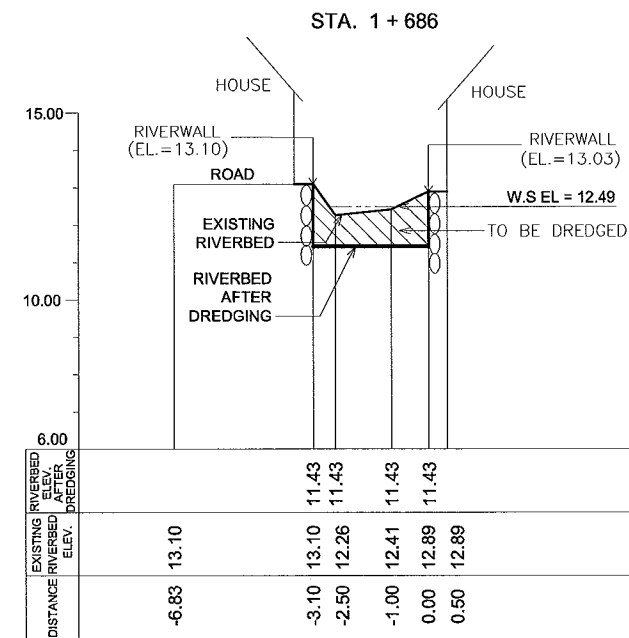
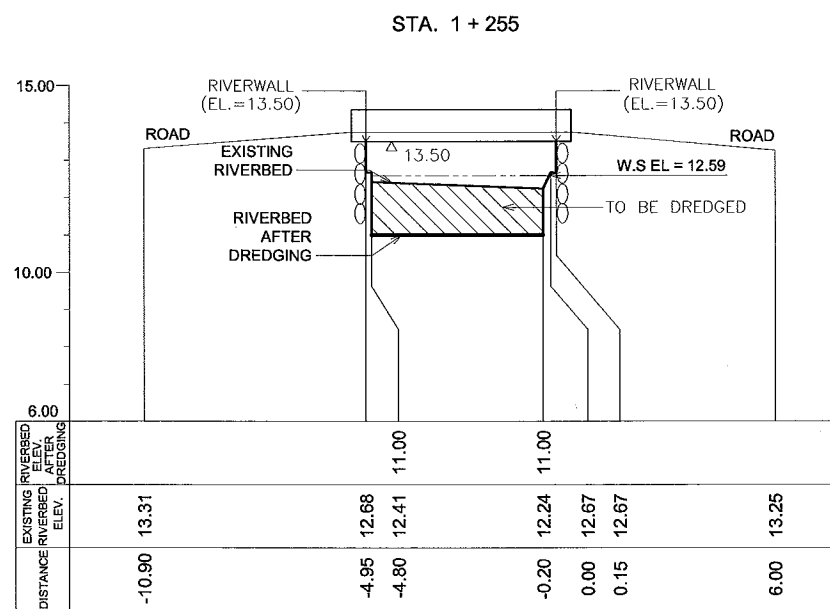
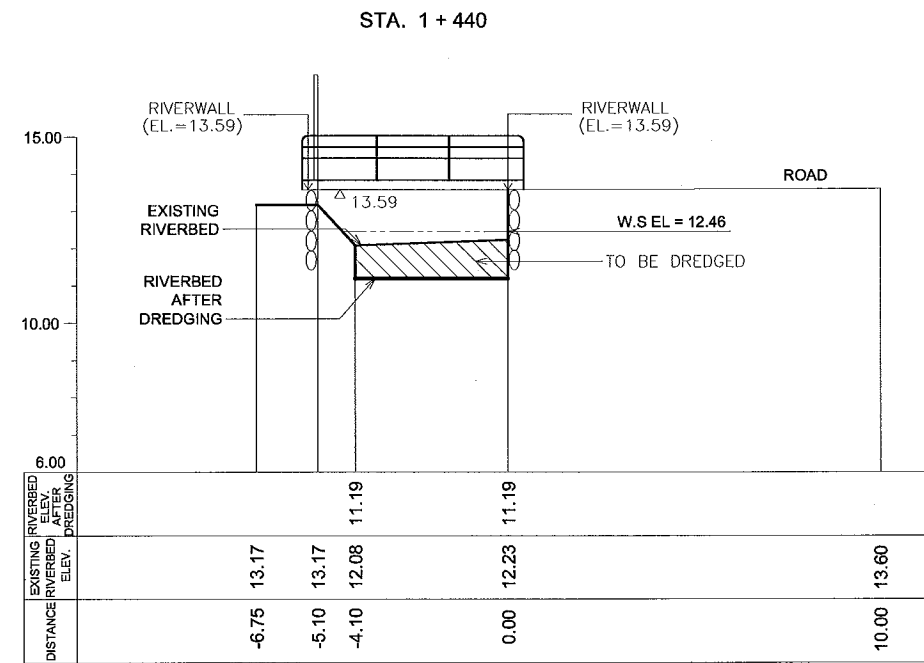
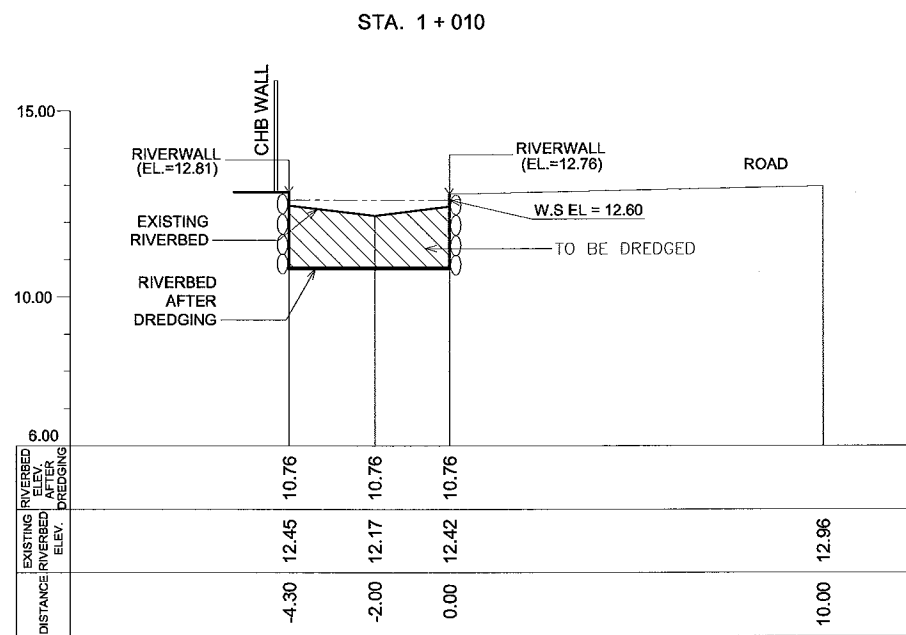
THE STUDY ON DRAINAGE IMPROVEMENT
IN THE CORE AREA OF METROPOLITAN MANILA

SHT. CONTENTS:

CROSS-SECTION LOCATION
CALATAGAN CREEK AND PASONG TAMO DM
(STA. 0+570 ~ STA. 0+754)

SHT. NO

27 of 37



CONSULTANTS

PACIFIC CONSULTANTS INTERNATIONAL
IN ASSOCIATION WITH
 NIKKEN CONSULTANTS, INC.

REPUBLIC OF THE PHILIPPINES

JAPAN INTERNATIONAL COOPERATION AGENCY
FOR
 DEPARTMENT OF PUBLIC WORKS AND HIGHWAYS
 METROPOLITAN MANILA DEVELOPMENT
AUTHORITY

PROJECT & LOCATION:

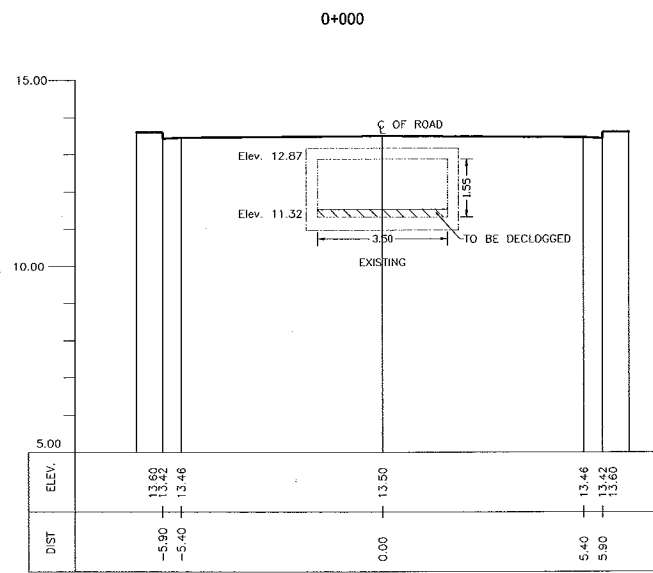
THE STUDY ON DRAINAGE IMPROVEMENT
IN THE CORE AREA OF METROPOLITAN MANILA

SHT. CONTENTS:

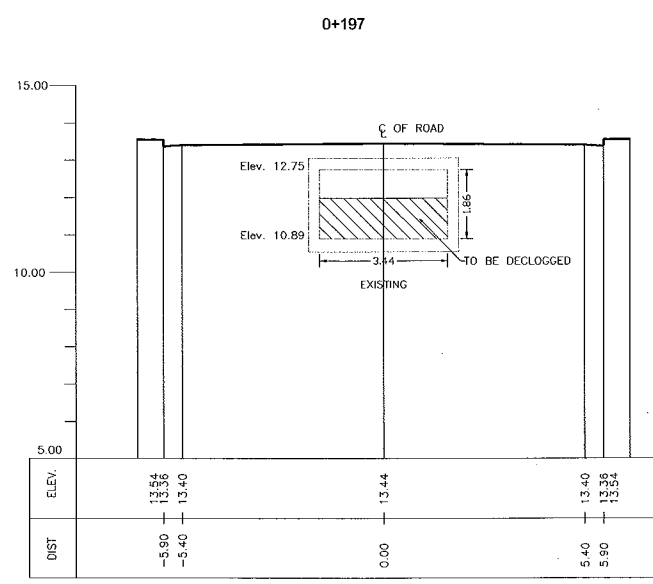
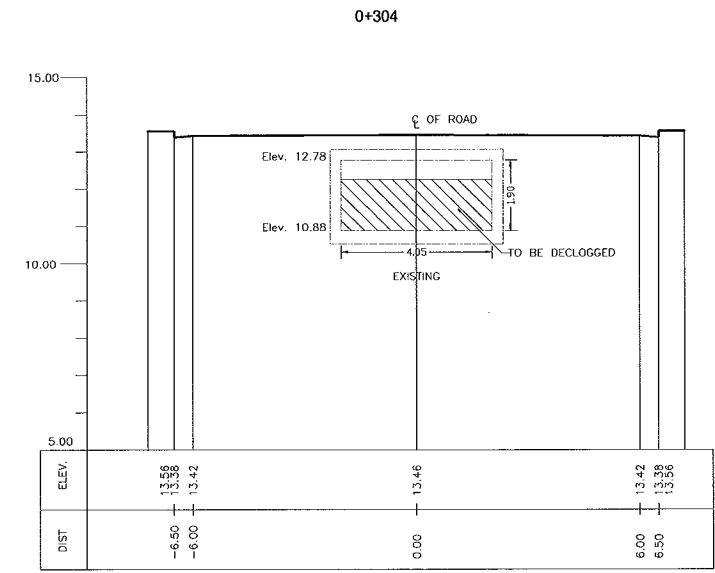
CROSS-SECTION LOCATION
CALATAGAN CREEK AND PASONG TAMO DM
(STA. 1+010 ~ STA. 1+686)

SHT. NO

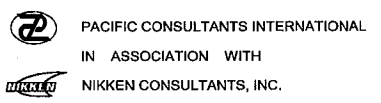
28 of 37



TO BE DREDGED



CONSULTANTS



REPUBLIC OF THE PHILIPPINES



PROJECT & LOCATION:

**THE STUDY ON DRAINAGE IMPROVEMENT
IN THE CORE AREA OF METROPOLITAN MANILA**

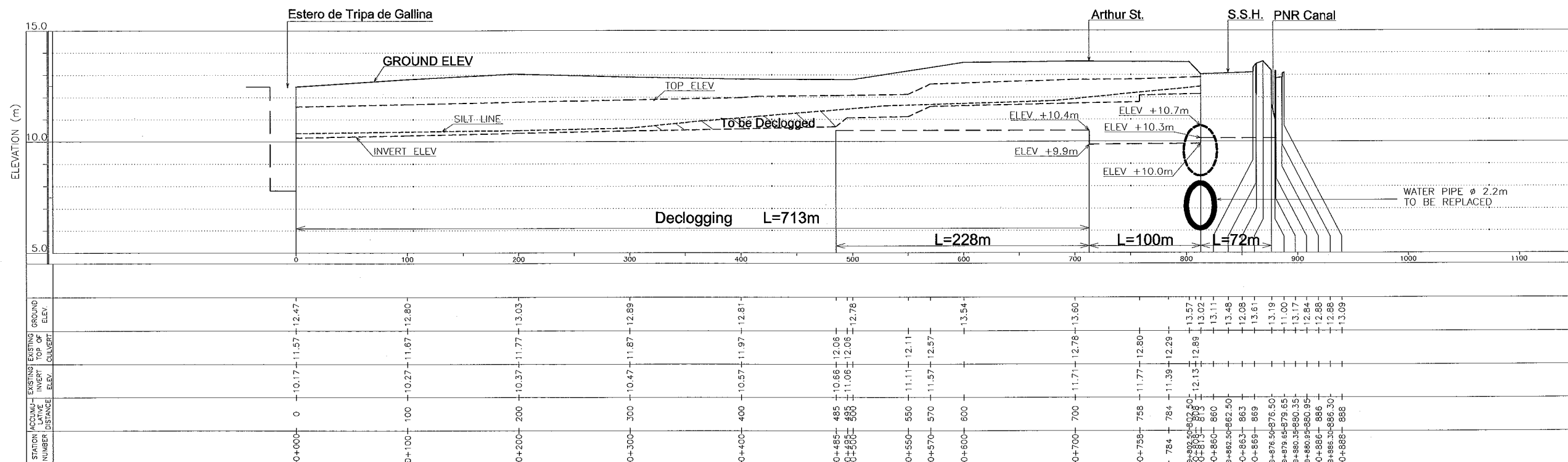
SHT. CONTENTS:

**TYPICAL SECTIONS
CALATAGAN CREEK AND PASONG TAMO DM
(STA. 0+000 ~ STA. 0+304)**

SHT. NO



PLAN OF FARADAY DM



PROFILE OF FARADAY DM

CONSULTANTS

PACIFIC CONSULTANTS INTERNATIONAL
IN ASSOCIATION WITH
NIKKEN CONSULTANTS, INC.

REPUBLIC OF THE PHILIPPINES

JICA JAPAN INTERNATIONAL COOPERATION AGENCY
FOR
DEPARTMENT OF PUBLIC WORKS AND HIGHWAYS
METROPOLITAN MANILA DEVELOPMENT AUTHORITY

PROJECT & LOCATION:

THE STUDY ON DRAINAGE IMPROVEMENT
IN THE CORE AREA OF METROPOLITAN MANILA

SHT. CONTENTS:

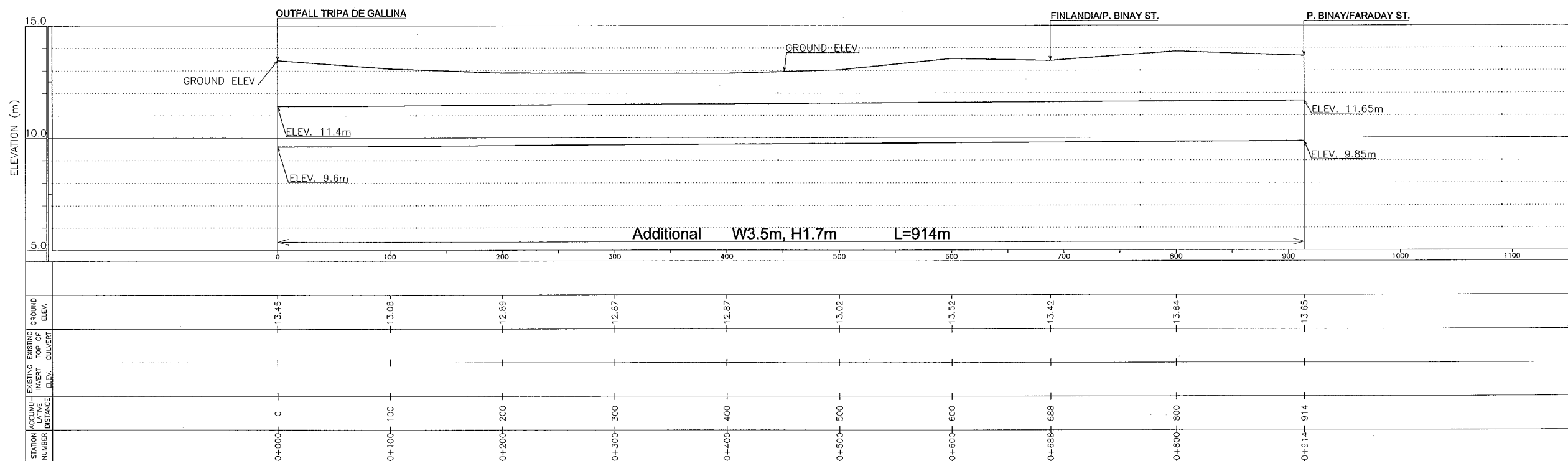
PLAN AND PROFILE
FARADAY (SD10A) DM
(STA. 0+000 ~ 0+880)

SHT. NO

30 of 37



PLAN OF FINLANDIA DM



PROFILE OF FINLANDIA DM

CONSULTANTS

PACIFIC CONSULTANTS INTERNATIONAL
IN ASSOCIATION WITH
NIKKEN CONSULTANTS, INC.

REPUBLIC OF THE PHILIPPINES

JICA JAPAN INTERNATIONAL COOPERATION AGENCY
FOR
DEPARTMENT OF PUBLIC WORKS AND HIGHWAYS
METROPOLITAN MANILA DEVELOPMENT AUTHORITY

PROJECT & LOCATION:

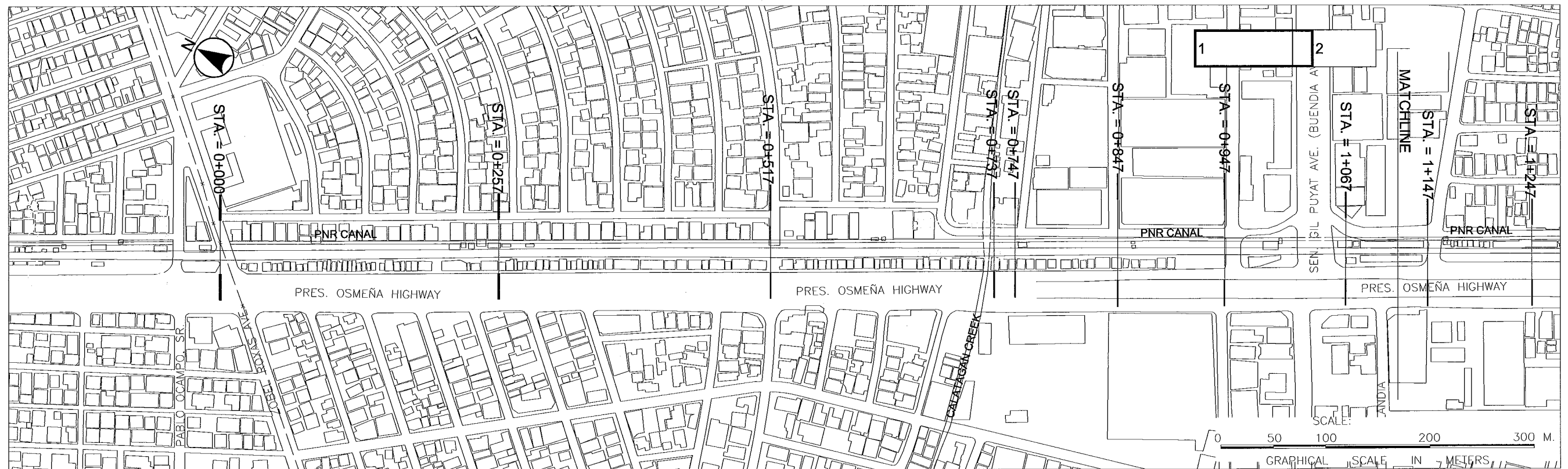
**THE STUDY ON DRAINAGE IMPROVEMENT
IN THE CORE AREA OF METROPOLITAN MANILA**

SHT. CONTENTS:

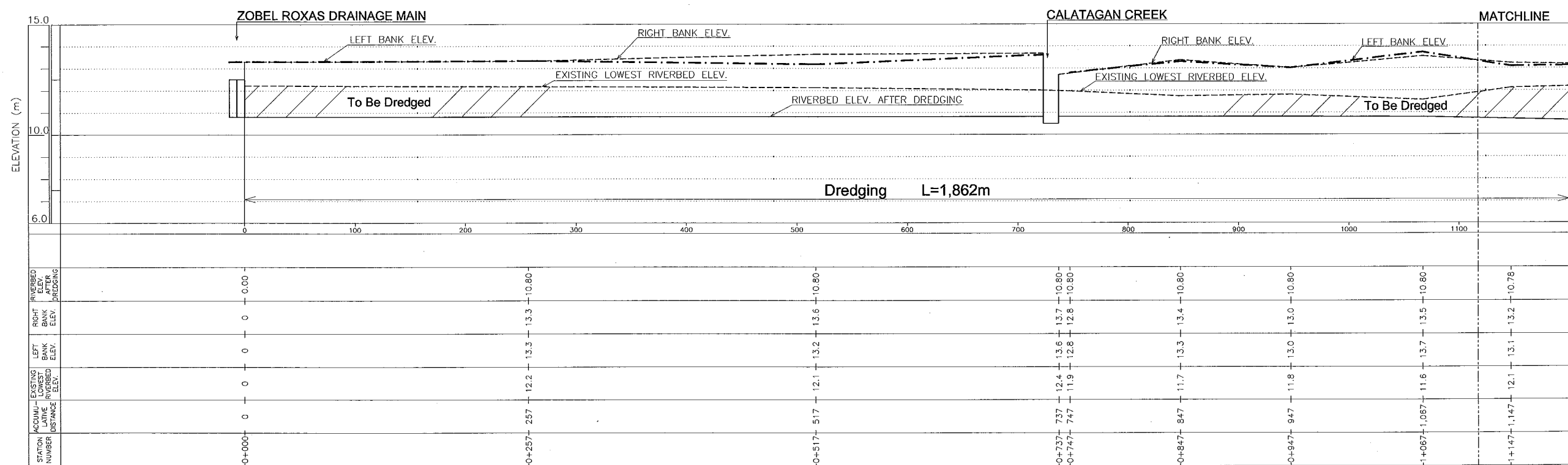
**PLAN AND PROFILE
FINLANDIA DM
(STA. 0+000-0+914)**

SHT. NO

31 of 37

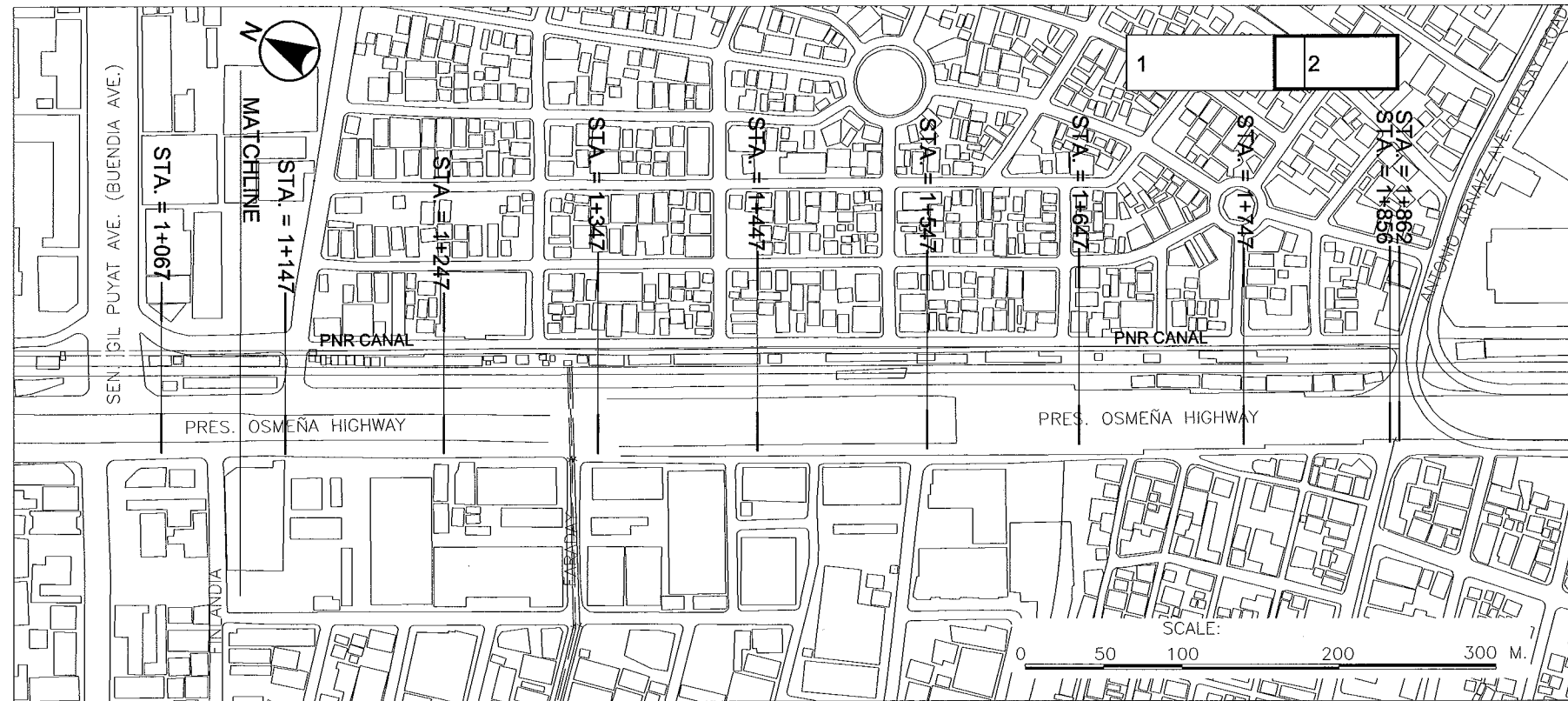


PLAN OF PNR CANAL

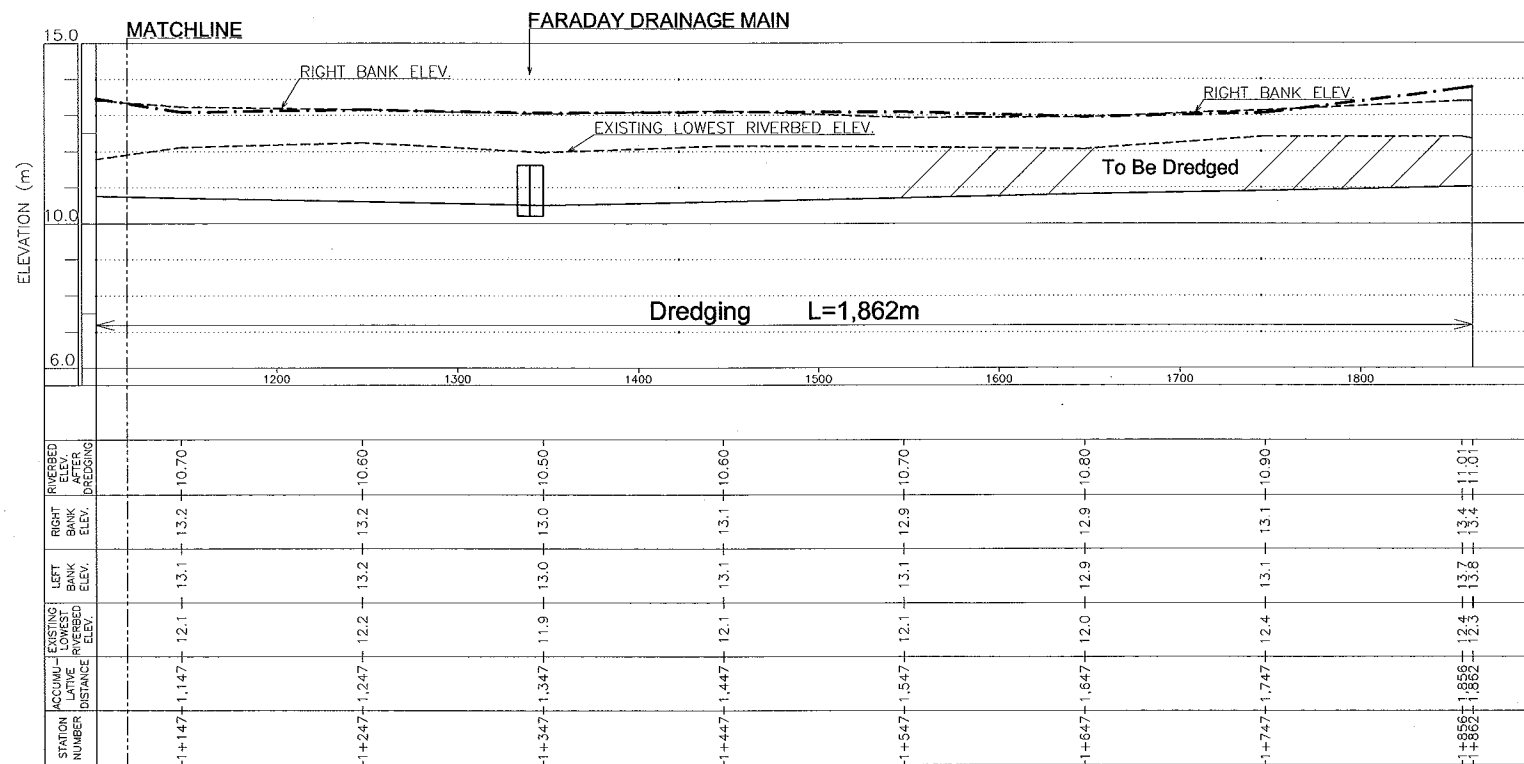


PROFILE OF PNR CANAL

CONSULTANTS 		REPUBLIC OF THE PHILIPPINES 		PROJECT & LOCATION: THE STUDY ON DRAINAGE IMPROVEMENT IN THE CORE AREA OF METROPOLITAN MANILA	SHT. CONTENTS: PLAN AND PROFILE PNR CANAL (STA. 0+000 ~ STA. 1+147)	SHT. NO 33 of 37
------------------------	--	--	--	--	---	----------------------------



PLAN OF PNR CANAL



PROFILE OF PNR CANAL

CONSULTANTS

PACIFIC CONSULTANTS INTERNATIONAL
IN ASSOCIATION WITH
 NIKKEN CONSULTANTS, INC.

REPUBLIC OF THE PHILIPPINES

JAPAN INTERNATIONAL COOPERATION AGENCY
FOR
 DEPARTMENT OF PUBLIC WORKS AND HIGHWAYS
 METROPOLITAN MANILA DEVELOPMENT
AUTHORITY

PROJECT & LOCATION:

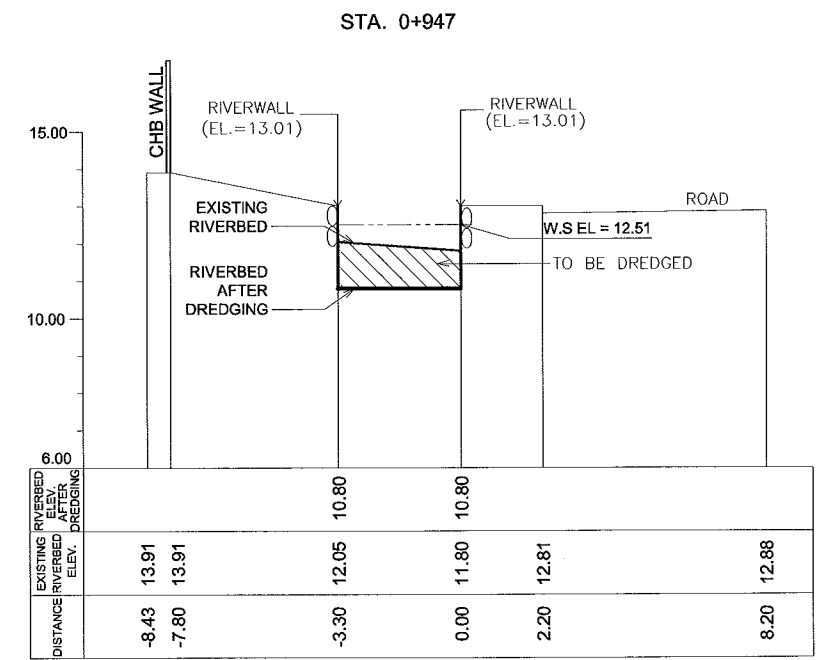
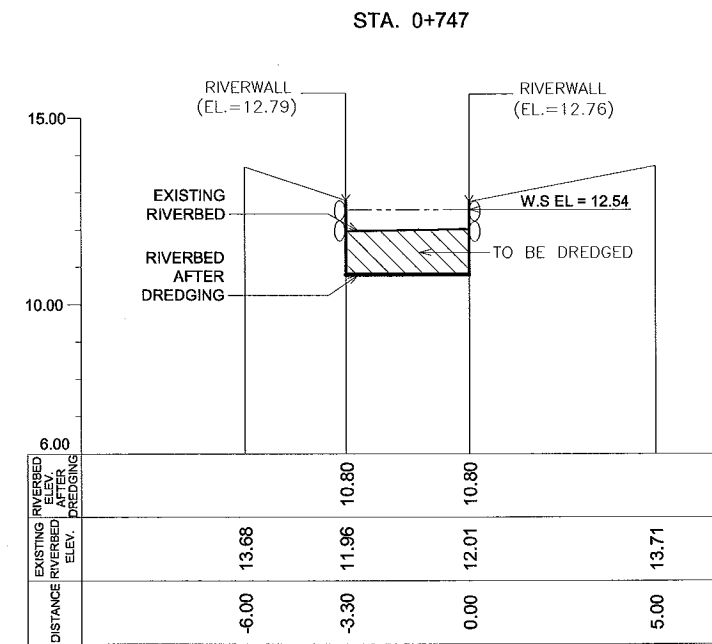
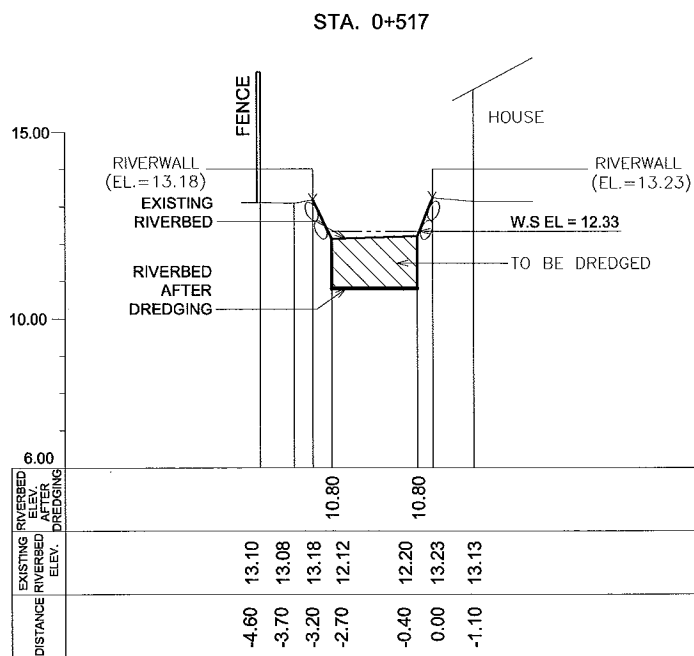
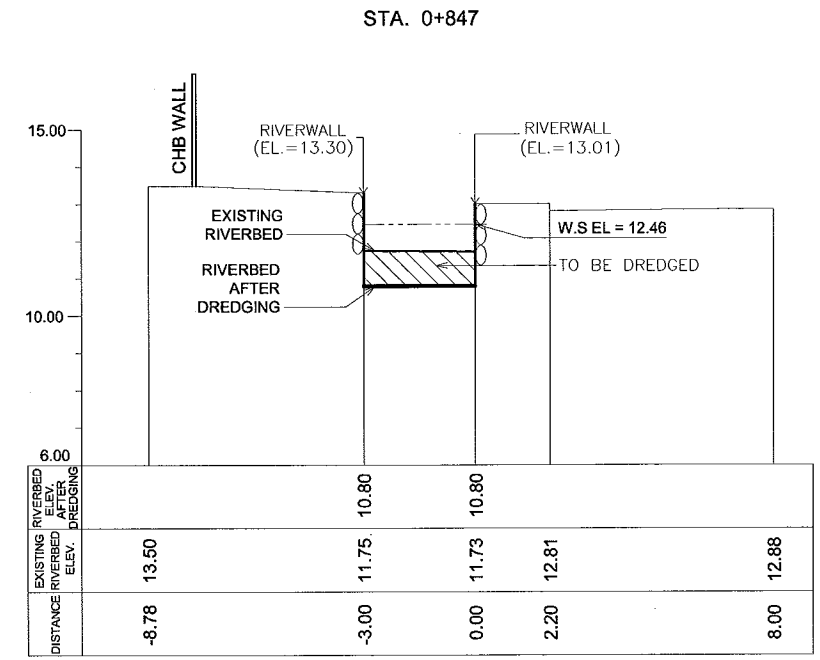
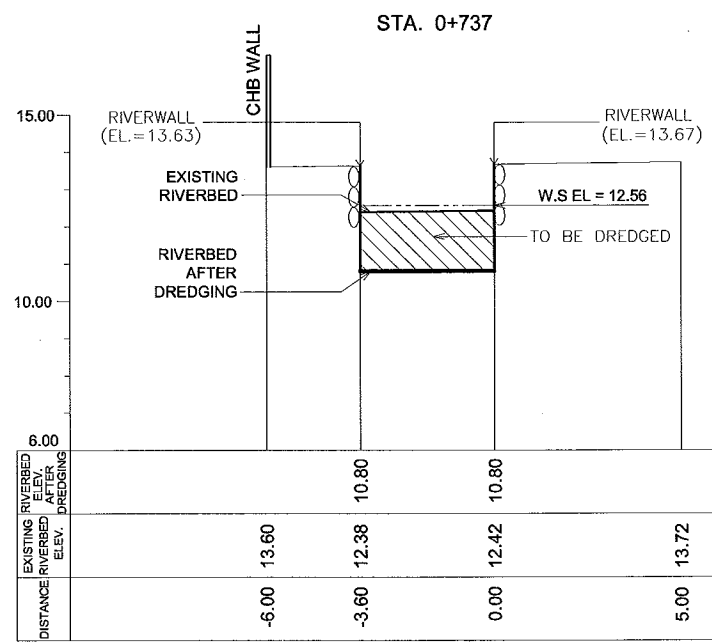
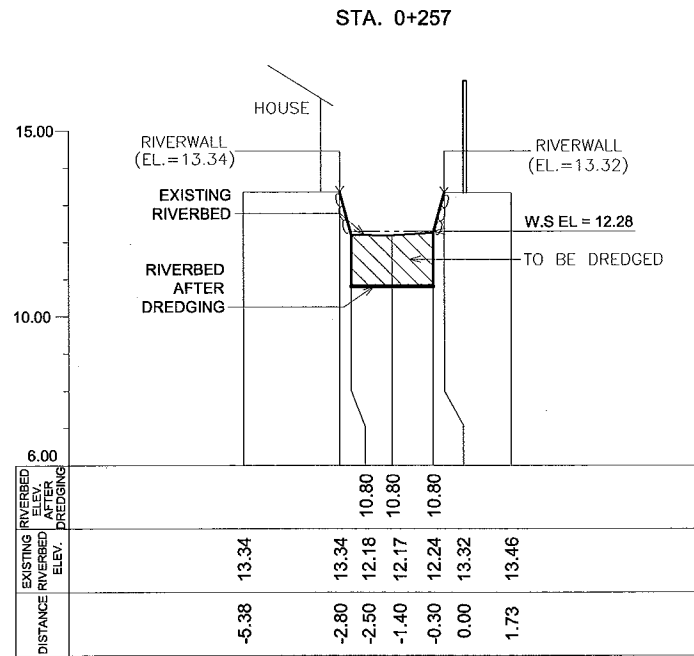
THE STUDY ON DRAINAGE IMPROVEMENT
IN THE CORE AREA OF METROPOLITAN MANILA

SHT. CONTENTS:

PLAN AND PROFILE
PNR CANAL
(STA. 1+147 ~ STA. 1+862)

SHT. NO

34 of 37



CONSULTANTS

PACIFIC CONSULTANTS INTERNATIONAL
IN ASSOCIATION WITH
NIKKEN CONSULTANTS, INC.

REPUBLIC OF THE PHILIPPINES

JICA JAPAN INTERNATIONAL COOPERATION AGENCY
FOR
DEPARTMENT OF PUBLIC WORKS AND HIGHWAYS
METROPOLITAN MANILA DEVELOPMENT
AUTHORITY

PROJECT & LOCATION:

THE STUDY ON DRAINAGE IMPROVEMENT
IN THE CORE AREA OF METROPOLITAN MANILA

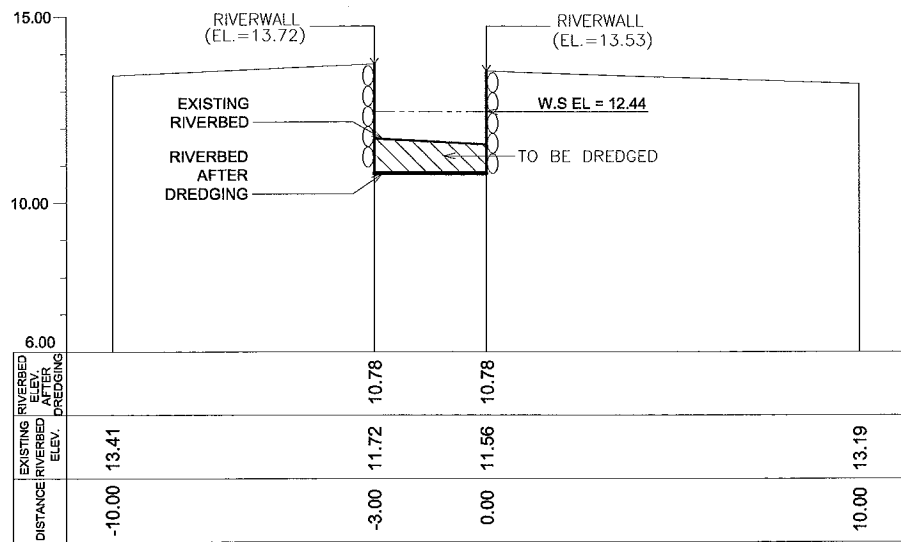
SHT. CONTENTS:

CROSS-SECTION LOCATION
PNR CANAL
(STA. 0+257 ~ STA. 0+947)

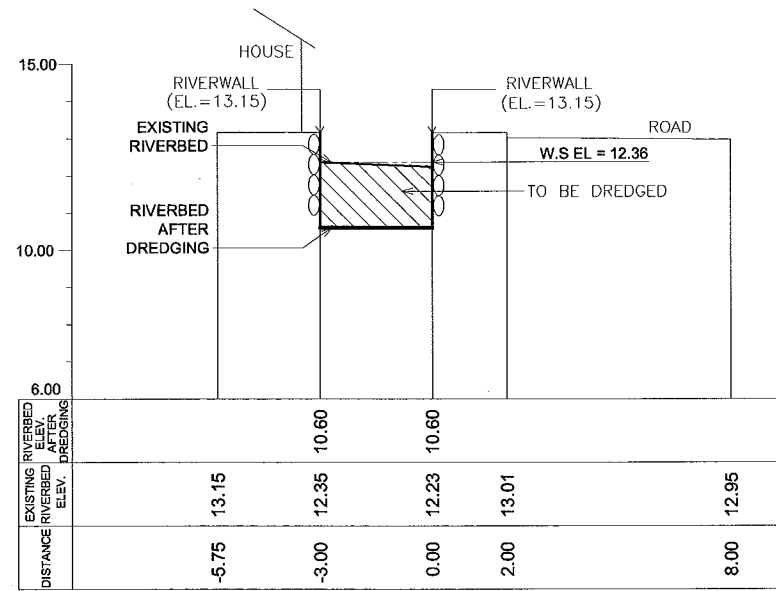
SHT. NO

35 of 37

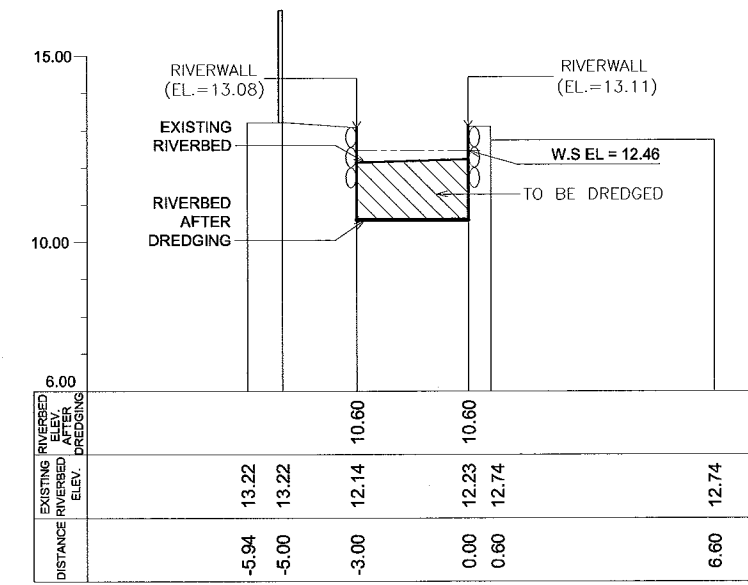
STA. 1+067



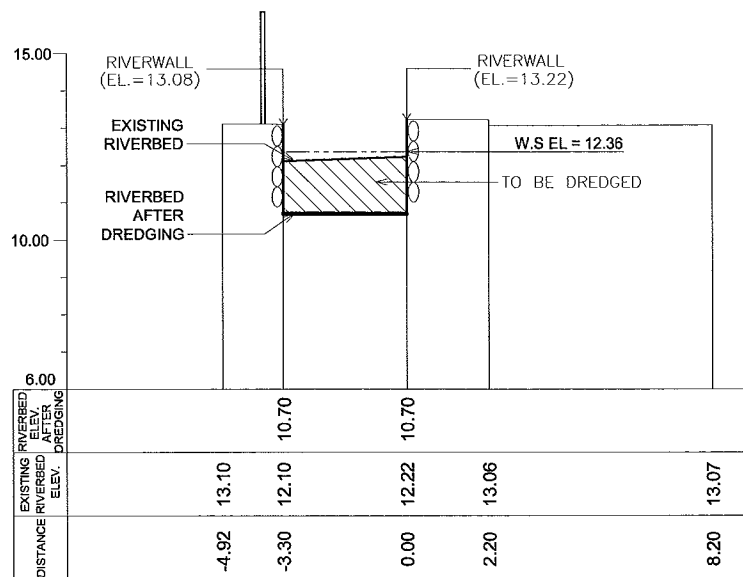
STA. 1+247



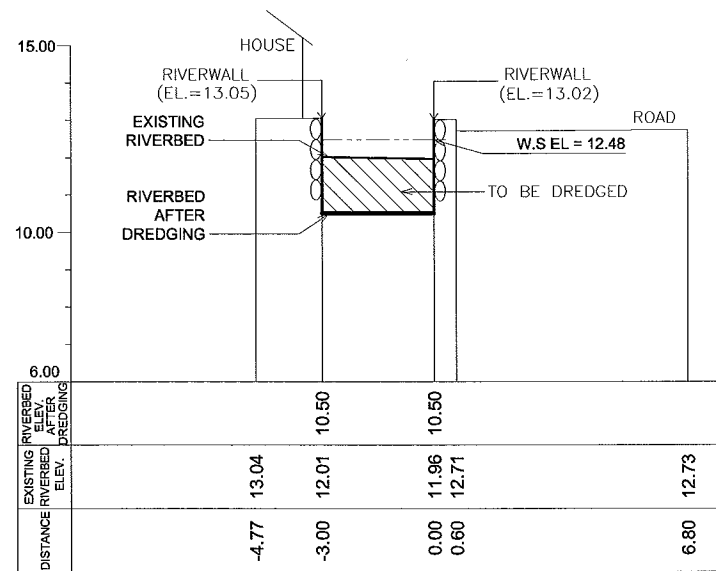
STA. 1+447



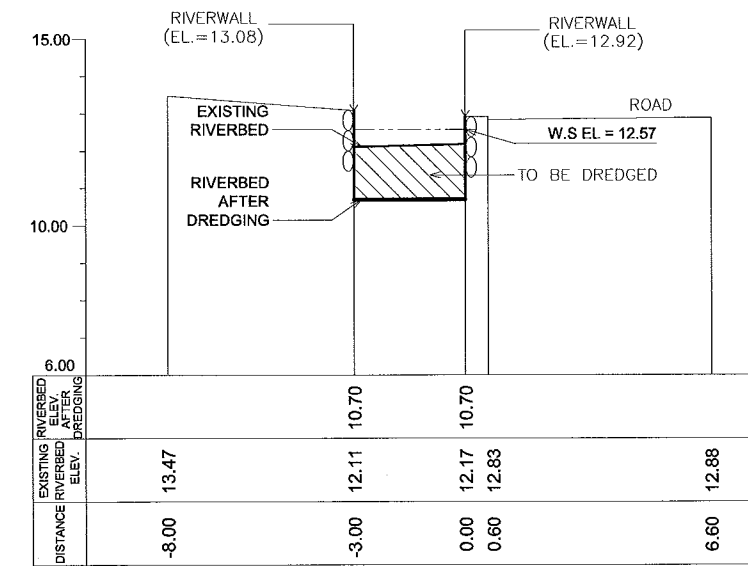
STA. 1+147



STA. 1+347



STA. 1+547



CONSULTANTS

PACIFIC CONSULTANTS INTERNATIONAL
IN ASSOCIATION WITH
 NIKKEN CONSULTANTS, INC.

REPUBLIC OF THE PHILIPPINES

JICA JAPAN INTERNATIONAL COOPERATION AGENCY
FOR
 DEPARTMENT OF PUBLIC WORKS AND HIGHWAYS
 METROPOLITAN MANILA DEVELOPMENT AUTHORITY

PROJECT & LOCATION:

THE STUDY ON DRAINAGE IMPROVEMENT
IN THE CORE AREA OF METROPOLITAN MANILA

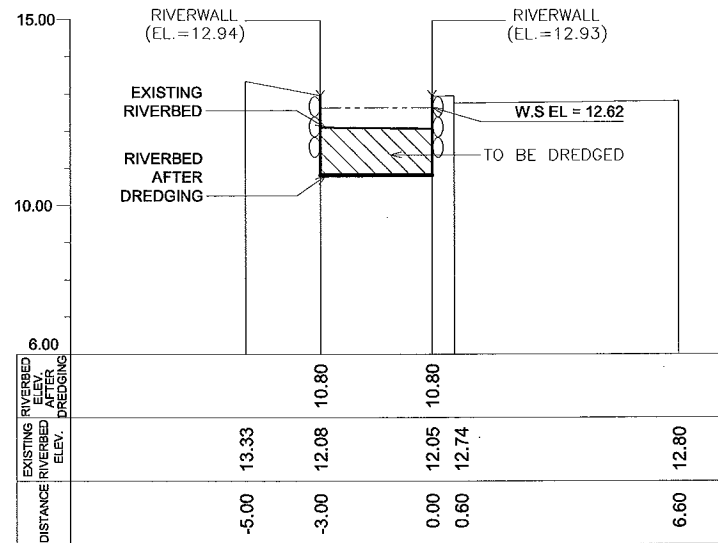
SHT. CONTENTS:

CROSS-SECTION LOCATION
PNR CANAL
(STA. 1+067 ~ STA. 1+547)

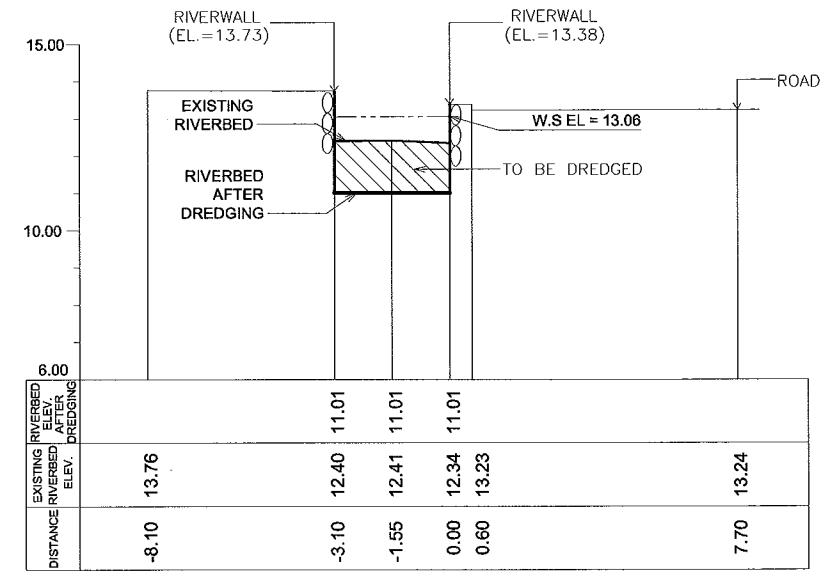
SHT. NO

36 of 37

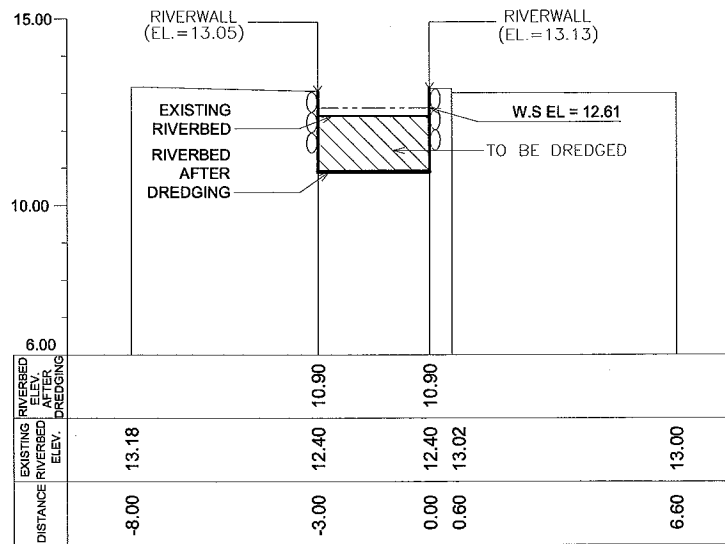
STA. 1+647



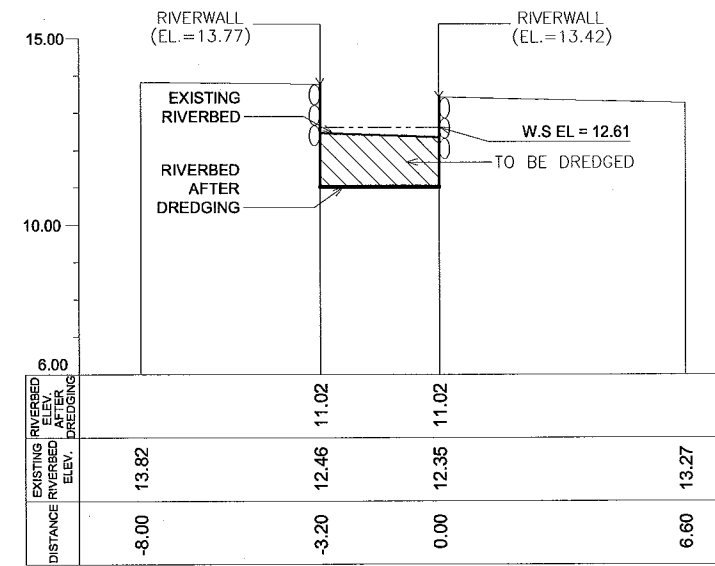
STA. 1+856



STA. 1+747



STA. 1+862



CONSULTANTS

PACIFIC CONSULTANTS INTERNATIONAL
IN ASSOCIATION WITH
NIKKEN CONSULTANTS, INC.

REPUBLIC OF THE PHILIPPINES

JICA JAPAN INTERNATIONAL COOPERATION AGENCY
FOR
DEPARTMENT OF PUBLIC WORKS AND HIGHWAYS
METROPOLITAN MANILA DEVELOPMENT
AUTHORITY

PROJECT & LOCATION:

THE STUDY ON DRAINAGE IMPROVEMENT
IN THE CORE AREA OF METROPOLITAN MANILA

SHT. CONTENTS:

CROSS-SECTION LOCATION
PNR CANAL
(STA. 1+647 ~ STA. 1+862)

SHT. NO

37 of 37