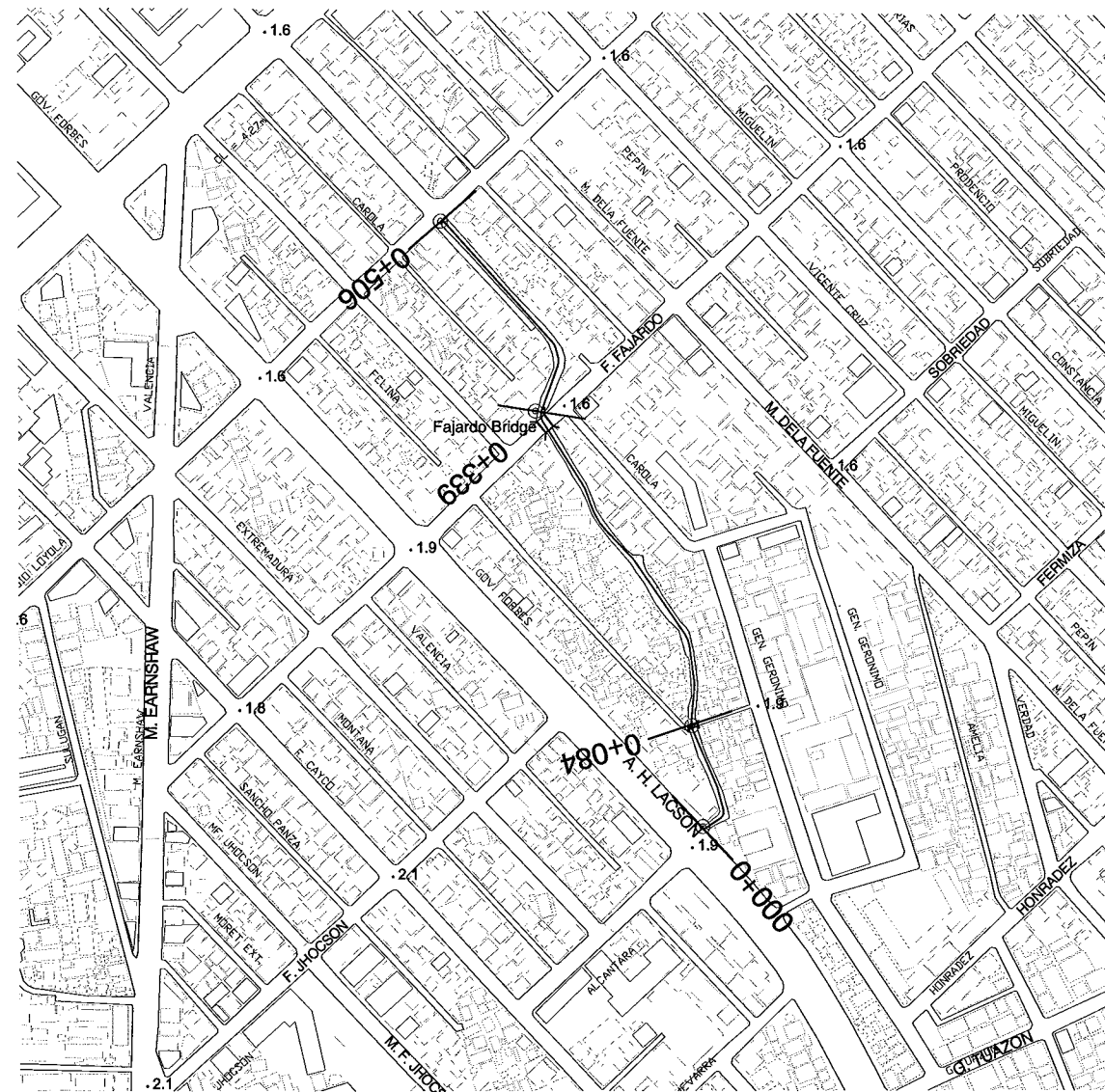


ESTERO DE SAMPALOC II

(NE18)



CROSS-SECTION LOCATION

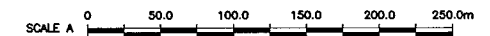
REFERENCE POINTS:

| STATION | EASTING | NORTHING |
|---------|------------|-------------|
| 0+000 | 499509.819 | 1615344.209 |
| 0+084 | 499502.320 | 1615415.422 |
| 0+339 | 499392.018 | 1615637.944 |
| 0+506 | 499325.128 | 1615772.277 |

ESTERO DE SAMPALOC II (NE18)
TOPOGRAPHIC MAP

1
CL-07

SCALE : A



CONSULTANTS

PACIFIC CONSULTANTS INTERNATIONAL
IN ASSOCIATION WITH
 NIKKEN CONSULTANTS, INC.

REPUBLIC OF THE PHILIPPINES

JAPAN INTERNATIONAL COOPERATION AGENCY
FOR

DEPARTMENT OF PUBLIC WORKS AND HIGHWAYS

METROPOLITAN MANILA DEVELOPMENT
AUTHORITY

PROJECT & LOCATION:

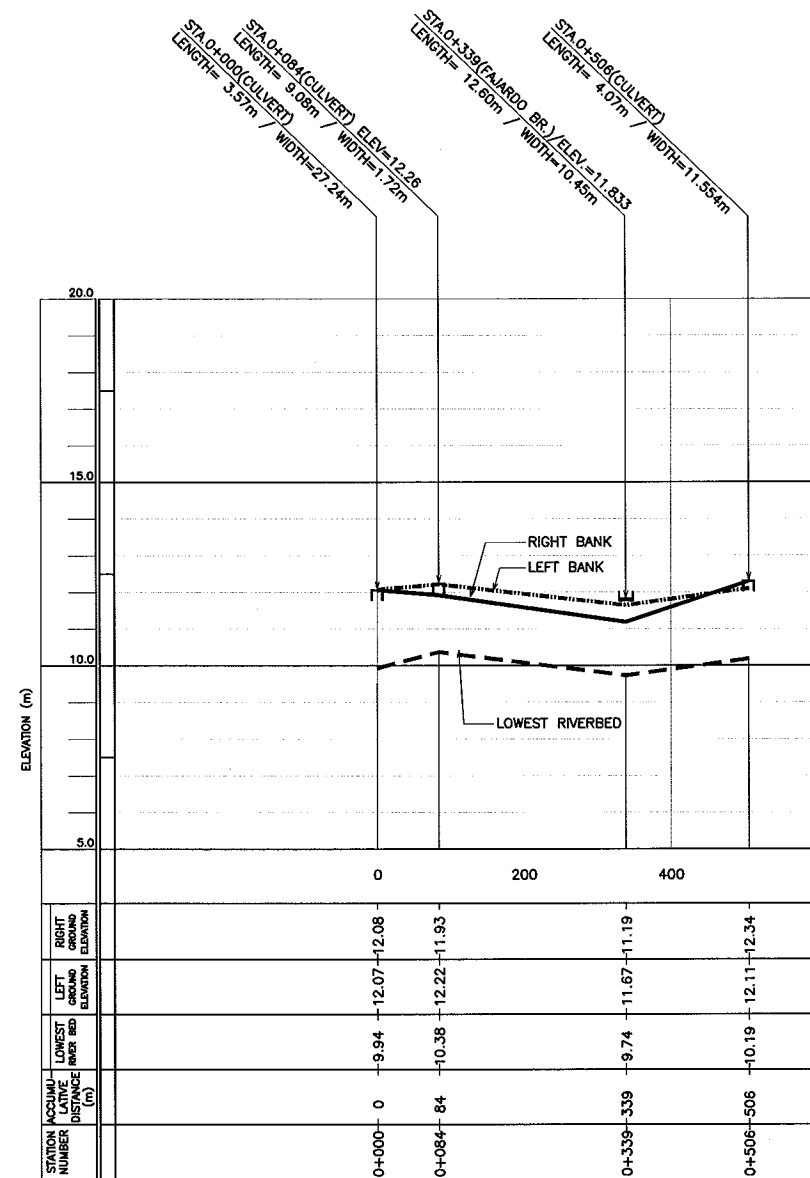
THE STUDY ON DRAINAGE IMPROVEMENT
IN THE CORE AREA OF METROPOLITAN MANILA

SHT. CONTENTS:

CROSS-SECTION LOCATION
ESTERO DE SAMPALOC II (NE18)
(STA. 0+000 - STA. 0+506)

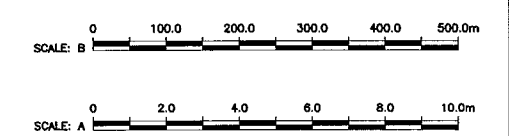
SHT. NO

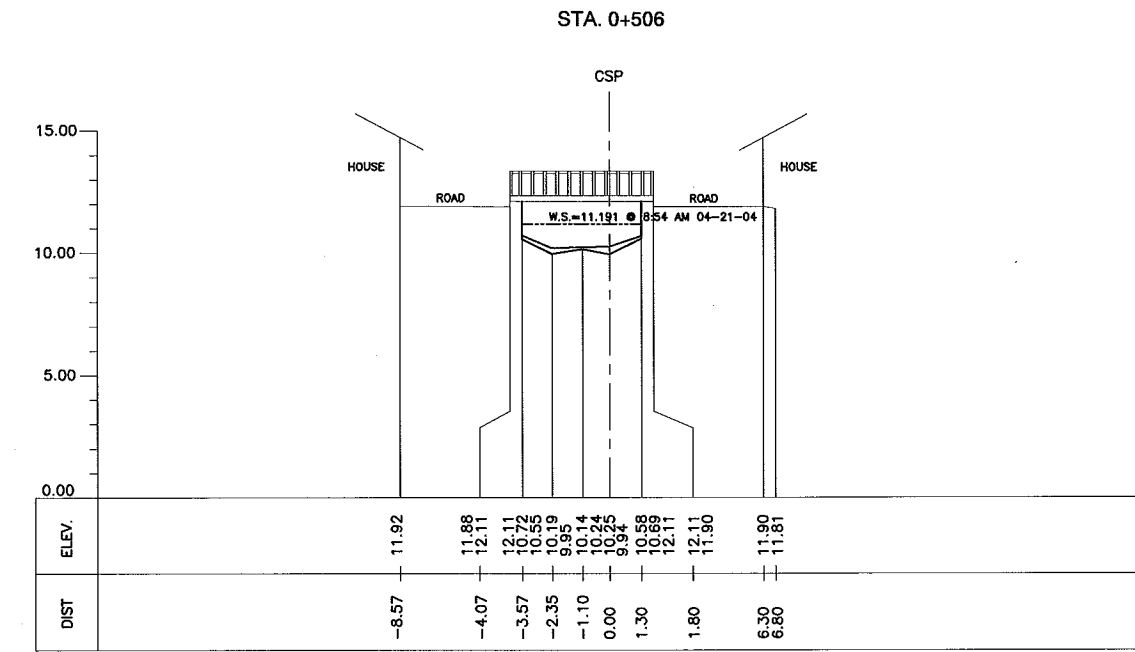
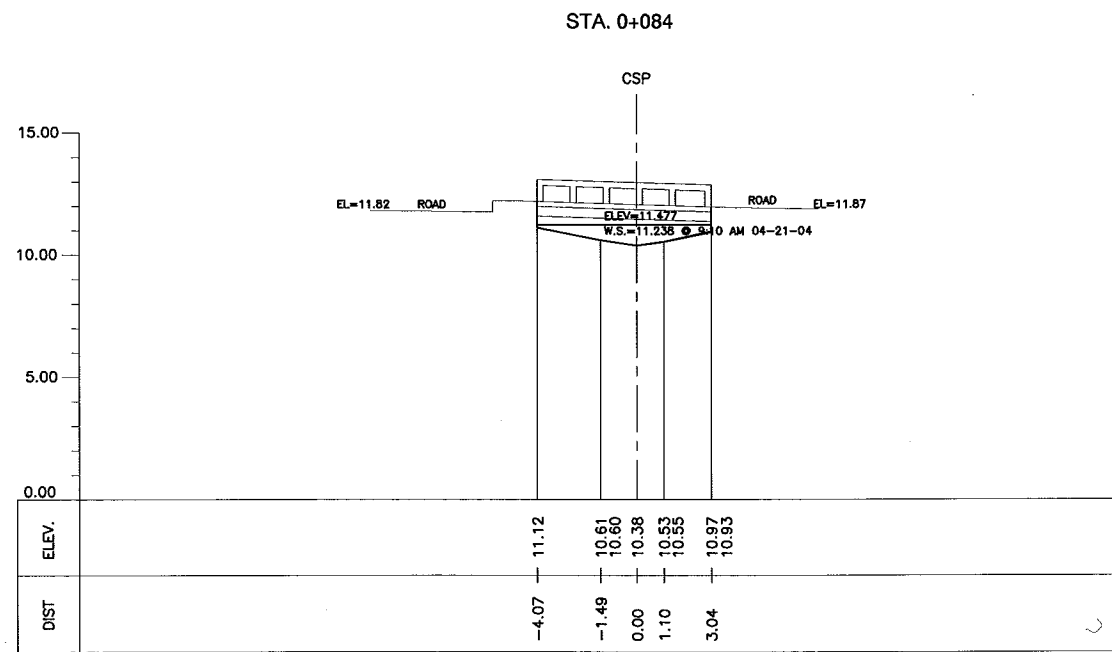
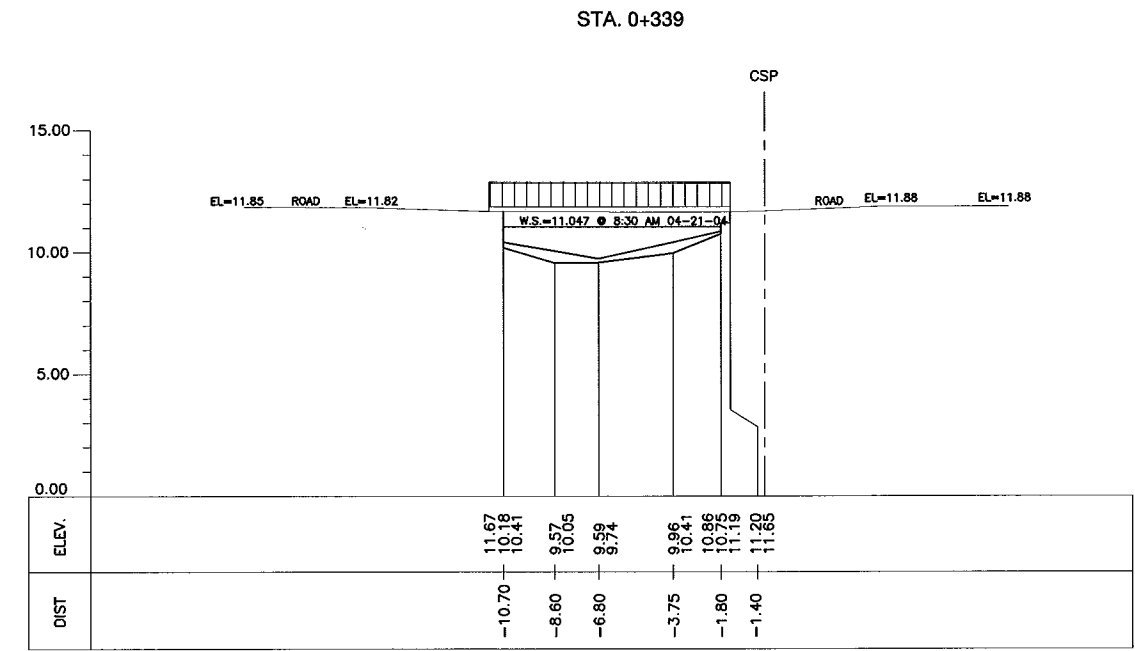
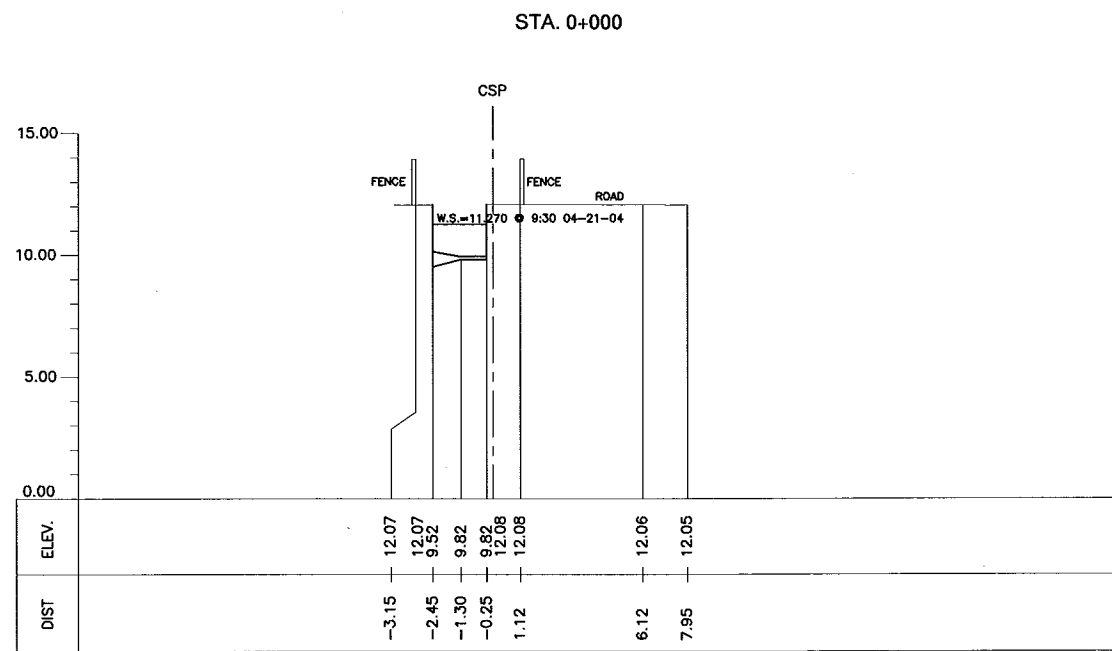
CL-07
01 | 01



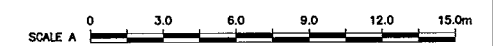
- LEGEND:
- : RIGHT BANK
 - : LEFT BANK
 - - - - : LOWEST RIVERBED
 - : BOX CULVERT
 - ▬ : BRIDGE
 - ▭ : CULVERT

1 LONGITUDINAL PROFILE
 LP-07 VER. = SCALE : A / HOR. = SCALE : B



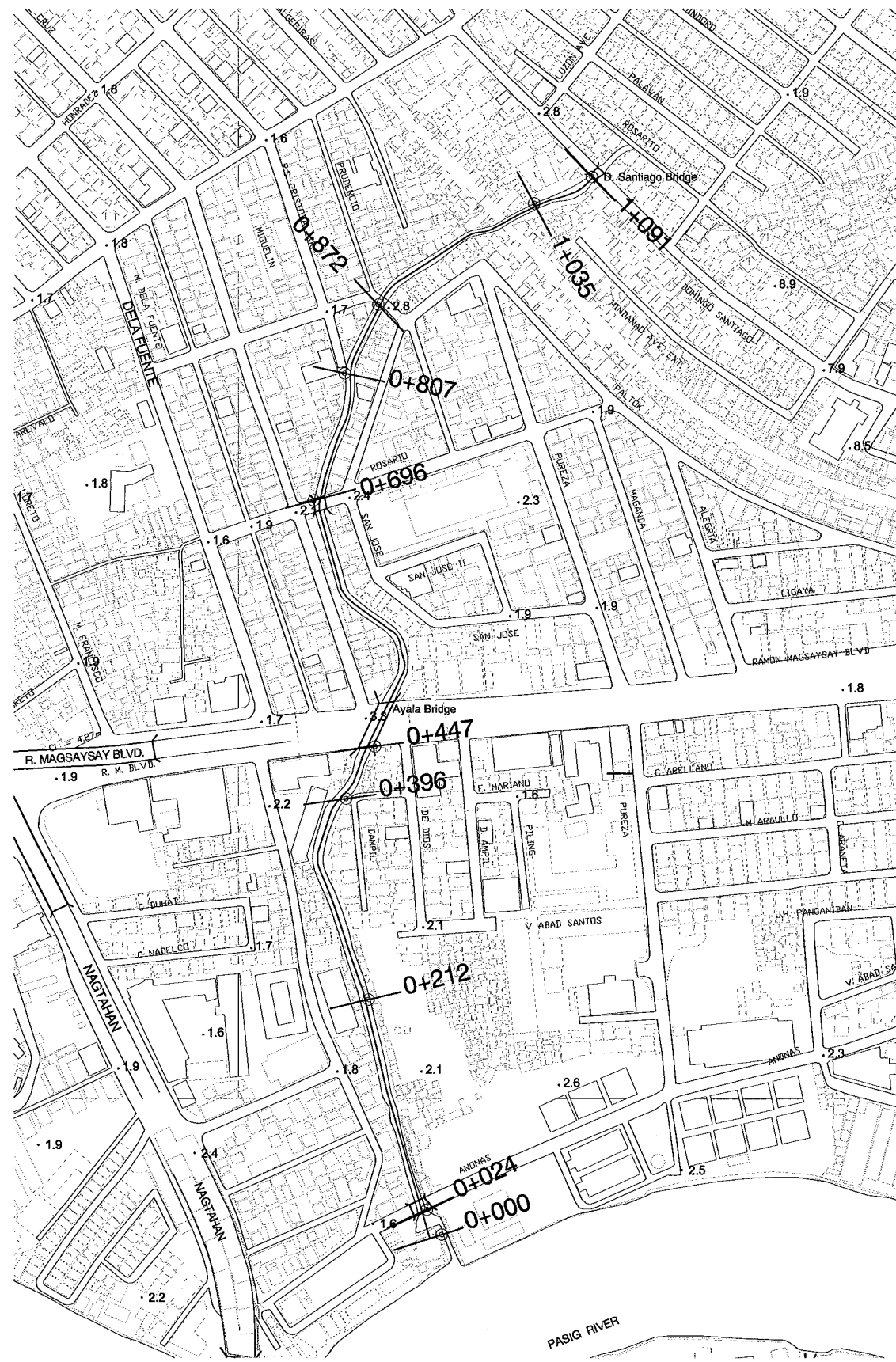


1 CROSS-SECTION
CS-07 SCALE : A



ESTERO DE VALENCIA

(NE20)



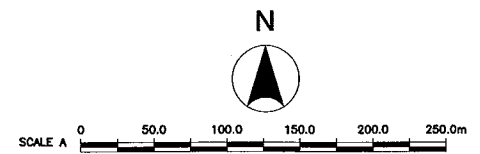
CROSS-SECTION LOCATION

REFERENCE POINTS:

| STATION | EASTING | NORTHING |
|------------|-----------|------------|
| STA. 0+000 | 500174.81 | 1614433.88 |
| STA. 0+024 | 500161.97 | 1614455.48 |
| STA. 0+212 | 500111.90 | 1614636.3 |
| STA. 0+396 | 500092.56 | 1614809.30 |
| STA. 0+447 | 500117.36 | 1614854.32 |
| STA. 0+696 | 500064.62 | 1615066.31 |
| STA. 0+807 | 500091.24 | 1615175.92 |
| STA. 0+872 | 500120.25 | 1615235.28 |
| STA. 1+035 | 500256.09 | 1615323.42 |
| STA. 1+091 | 500304.15 | 1615345.88 |

1
CL-08

ESTERO DE VALENCIA (NE20)
TOPOGRAPHIC MAP
SCALE : A



CONSULTANTS

PACIFIC CONSULTANTS INTERNATIONAL
IN ASSOCIATION WITH
 NIKKEN CONSULTANTS, INC.

REPUBLIC OF THE PHILIPPINES

JICA JAPAN INTERNATIONAL COOPERATION AGENCY
FOR
 DEPARTMENT OF PUBLIC WORKS AND HIGHWAYS
 METROPOLITAN MANILA DEVELOPMENT
AUTHORITY

PROJECT & LOCATION:

THE STUDY ON DRAINAGE IMPROVEMENT
IN THE CORE AREA OF METROPOLITAN MANILA

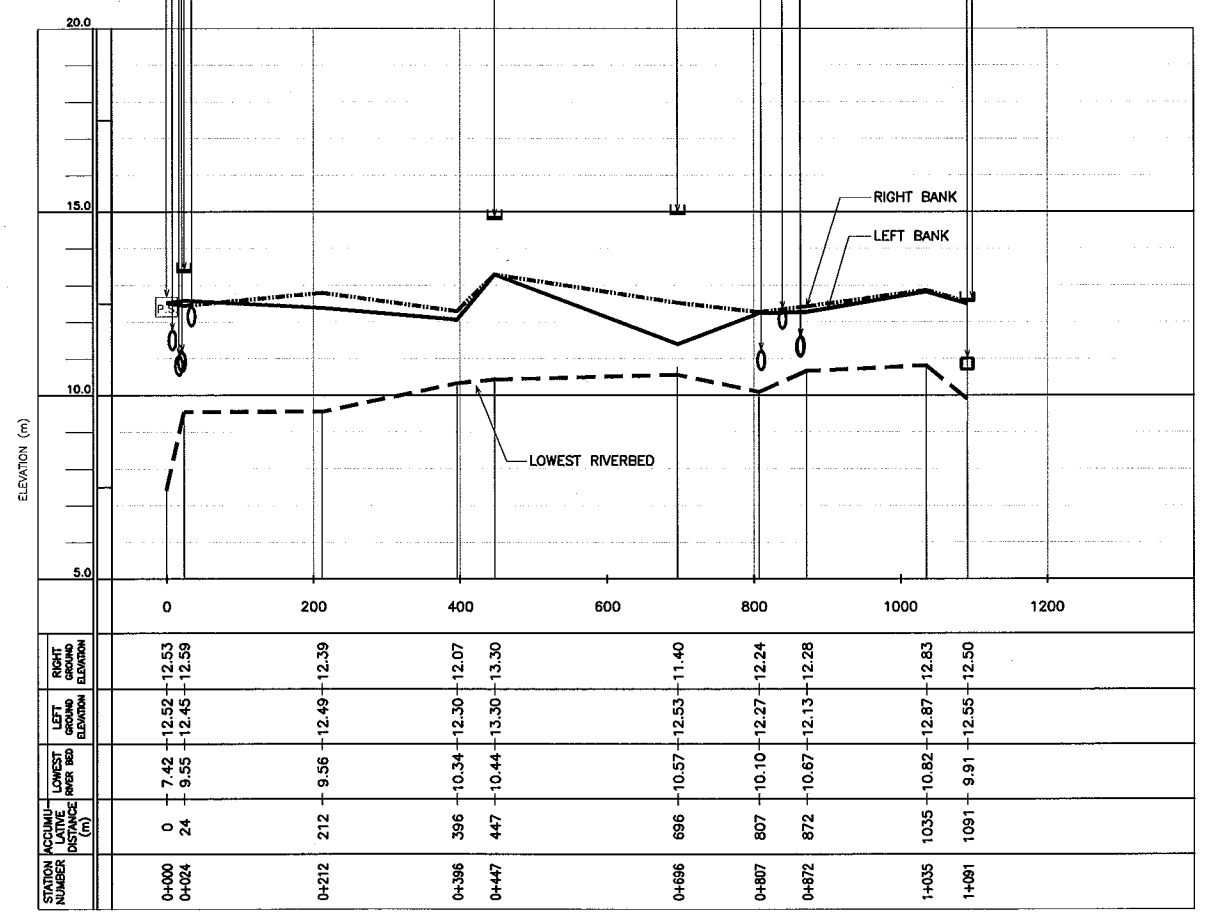
SHT. CONTENTS:

CROSS-SECTION LOCATION
ESTERO DE VALENCIA (NE20)
(STA. 0+000 ~ STA. 1+091)

SHT. NO

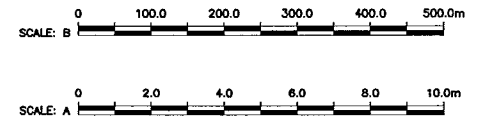
CL-08
01 | 01

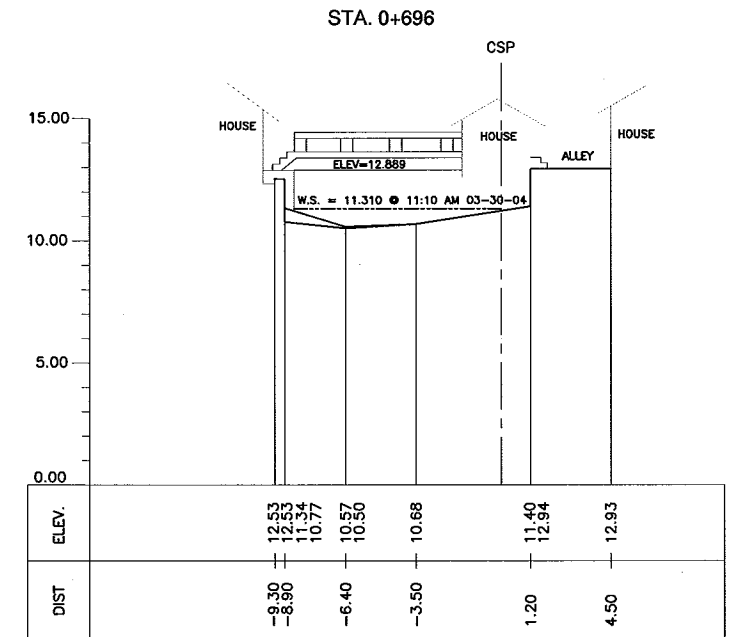
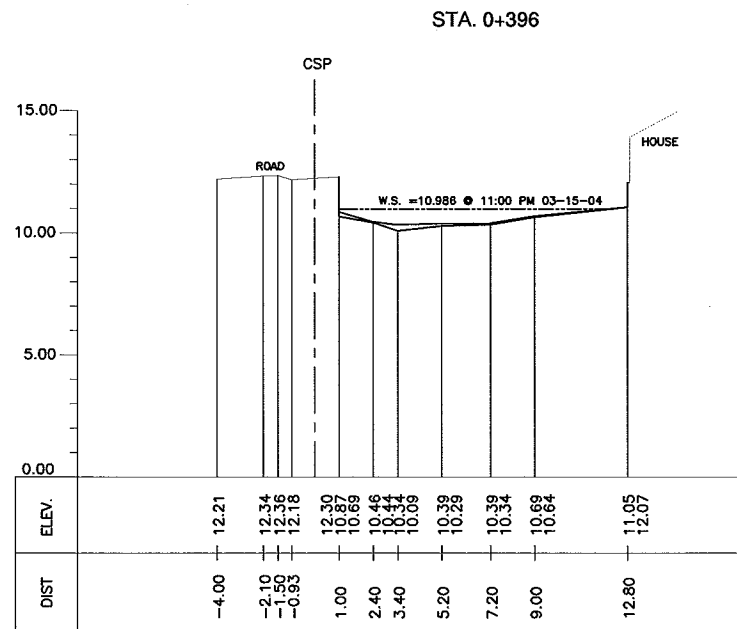
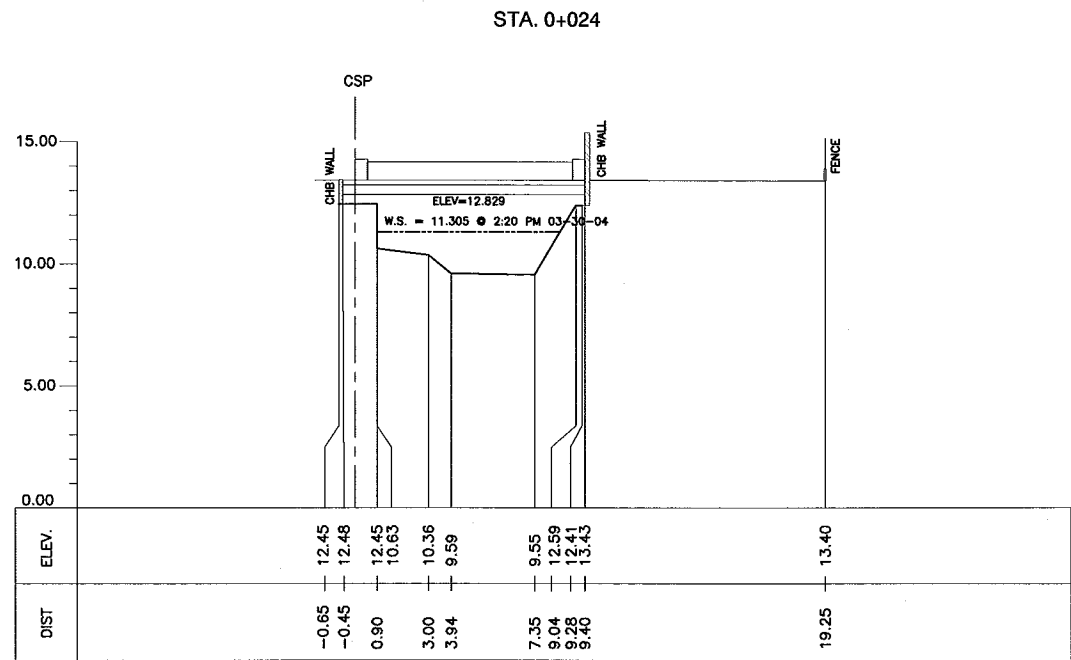
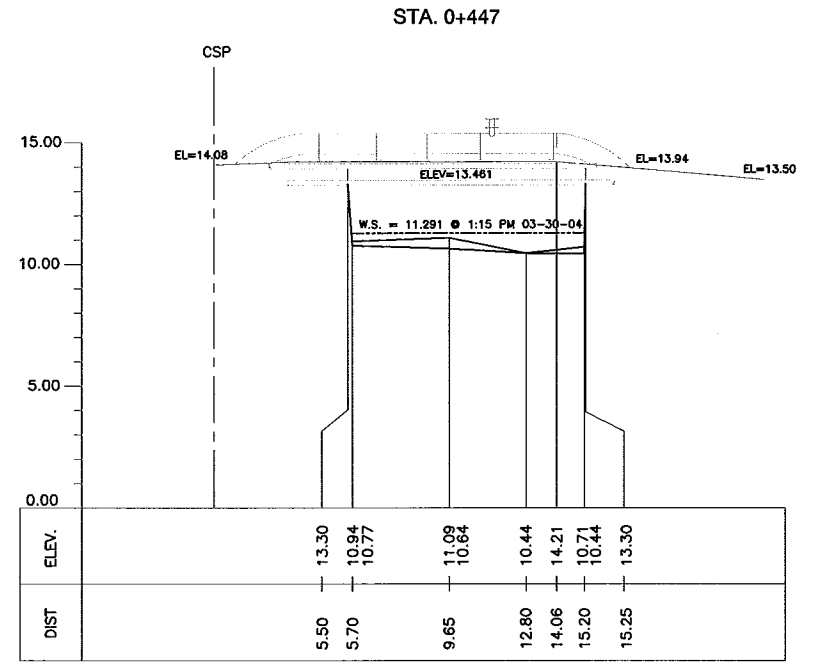
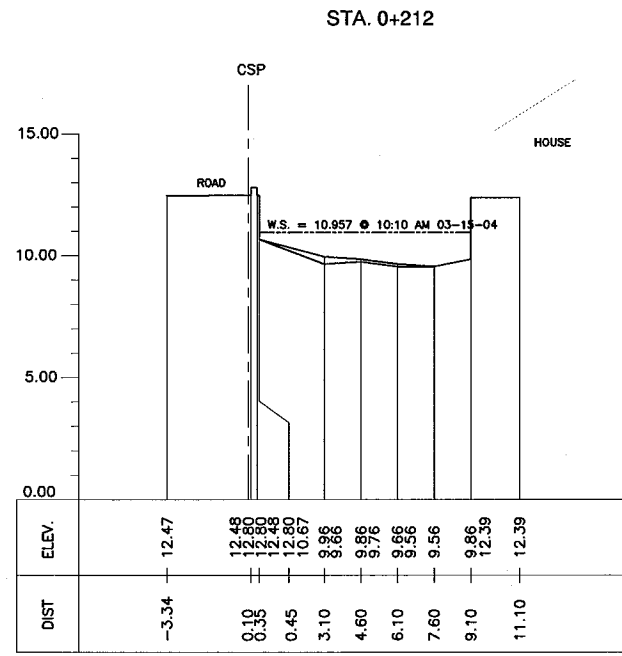
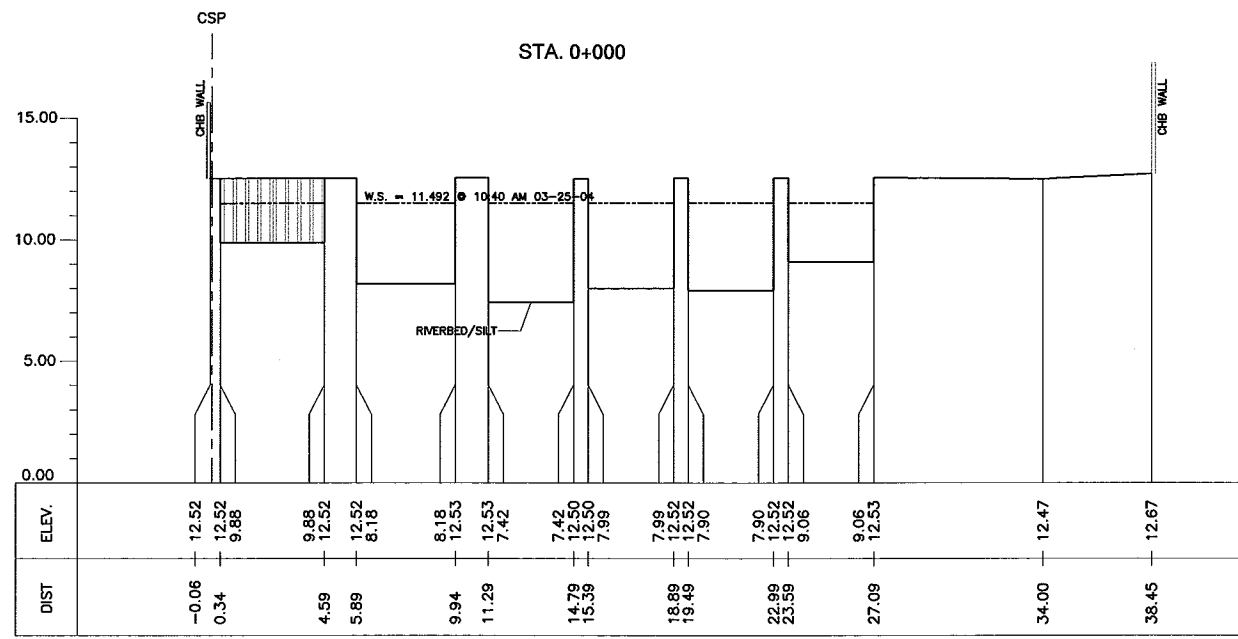
STA. 0+021 LEFT SIDE
 RCP 900mm^ø INV. ELEV.=10.68
 STA. 0+017 RIGHT SIDE
 RCP 800mm^ø INV. ELEV.=10.58
 STA. 0+008 RIGHT SIDE
 RCP 800mm^ø INV. ELEV.=11.27
 STA. 0+000 (VALENCIA PUMPING STATION)
 TIDE GAUGE \odot ELEV. 12.00m=12.747
 STA. 0+024 (ANDONS BR.)
 LENGTH= 9.8m / WIDTH=11.21m
 STA. 0+024 RIGHT SIDE
 RCP 600mm^ø INV. ELEV.=11.92
 STA. 0+447 (AYALA BR.)
 LENGTH= 17.76m / WIDTH=42.15m
 ELEV.=14.87
 STA. 0+696 (ROSAURO BR.)
 LENGTH= 9.35m / WIDTH=11.06m
 STA. 0+839 LEFT SIDE
 RCP 600mm^ø INV. ELEV.=11.85
 STA. 0+810 RIGHT SIDE
 RCP 900mm^ø INV. ELEV.=10.72
 STA. 0+864 LEFT SIDE
 RCP 1200mm^ø INV. ELEV.=11.92
 STA. 0+883 LEFT SIDE
 RCP 1200mm^ø INV. ELEV.=11.09
 STA. 1+091 (MISYAS OUTFALL)
 CULVERT INVERT ELEV. = 9.48
 STA. 1+091 (SANTIAGO BR.)
 LENGTH= 8.59m / WIDTH=9.28m
 DEPTH=1800mm
 ELEV.=12.82



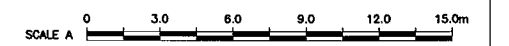
- LEGEND:
- : RIGHT BANK
 - : LEFT BANK
 - - - - : LOWEST RIVERBED
 - : BOX CULVERT
 - ┌ : BRIDGE
 - : REINFORCE CONCRETE PIPE
 - Ⓟ : PUMPING STATION

1
LONGITUDINAL PROFILE
 LP-08 VER. = SCALE : A / HOR. = SCALE : B

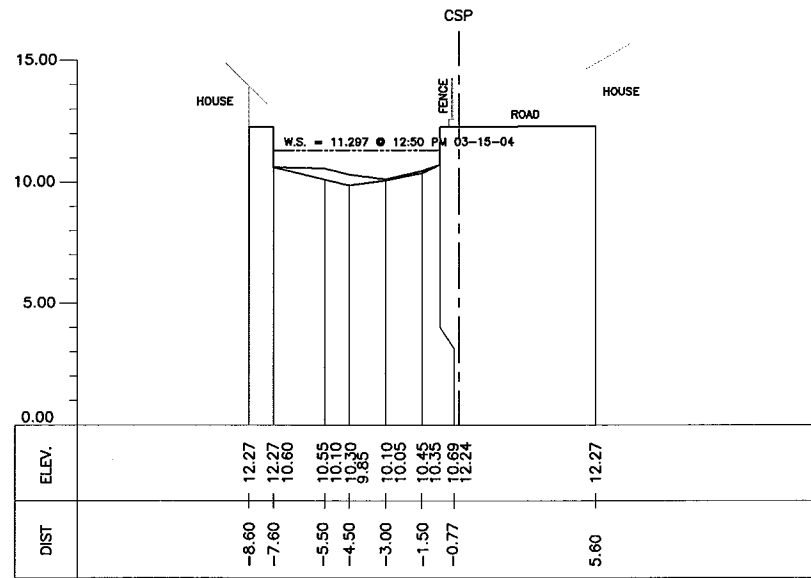




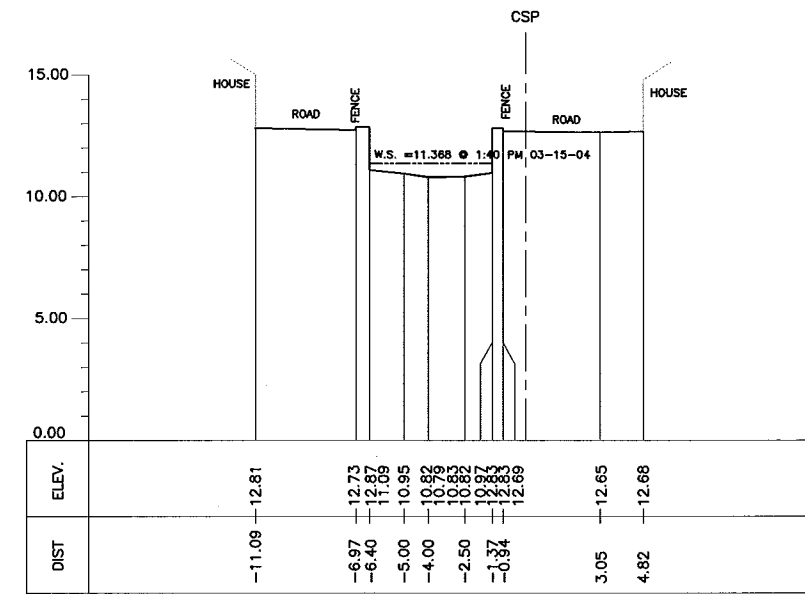
1 CROSS-SECTION
 CS-08 SCALE : A



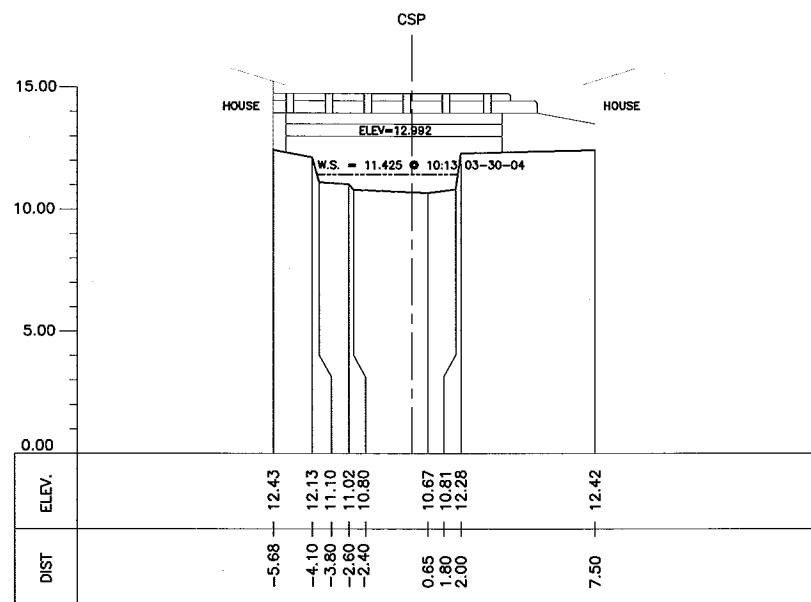
STA. 0+807



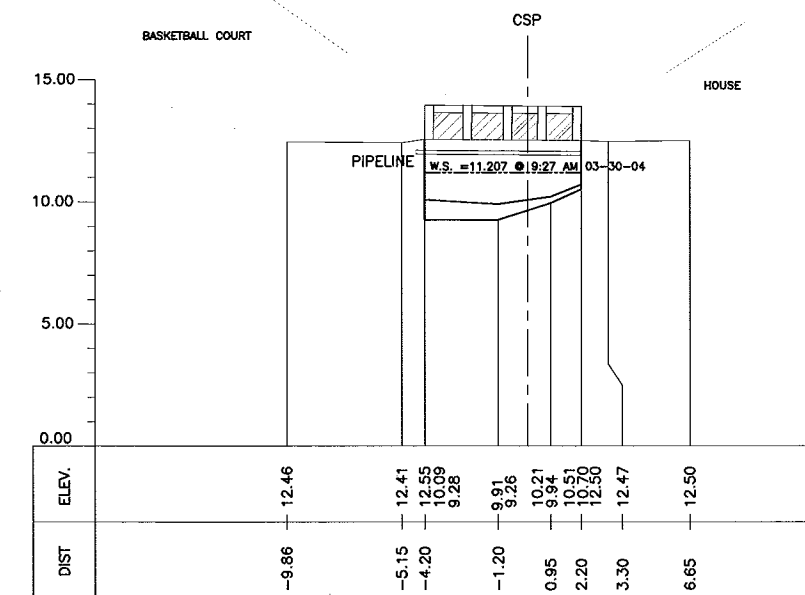
STA. 1+035



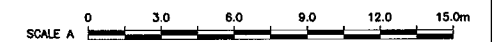
STA. 0+872



STA. 1+091



1 CROSS-SECTION
CS-08 SCALE : A



CONSULTANTS

PACIFIC CONSULTANTS INTERNATIONAL
IN ASSOCIATION WITH
NIKKEN CONSULTANTS, INC.

REPUBLIC OF THE PHILIPPINES

JICA JAPAN INTERNATIONAL COOPERATION AGENCY
FOR
DEPARTMENT OF PUBLIC WORKS AND HIGHWAYS
METROPOLITAN MANILA DEVELOPMENT
AUTHORITY

PROJECT & LOCATION:

THE STUDY ON DRAINAGE IMPROVEMENT
IN THE CORE AREA OF METROPOLITAN MANILA

SHT. CONTENTS:

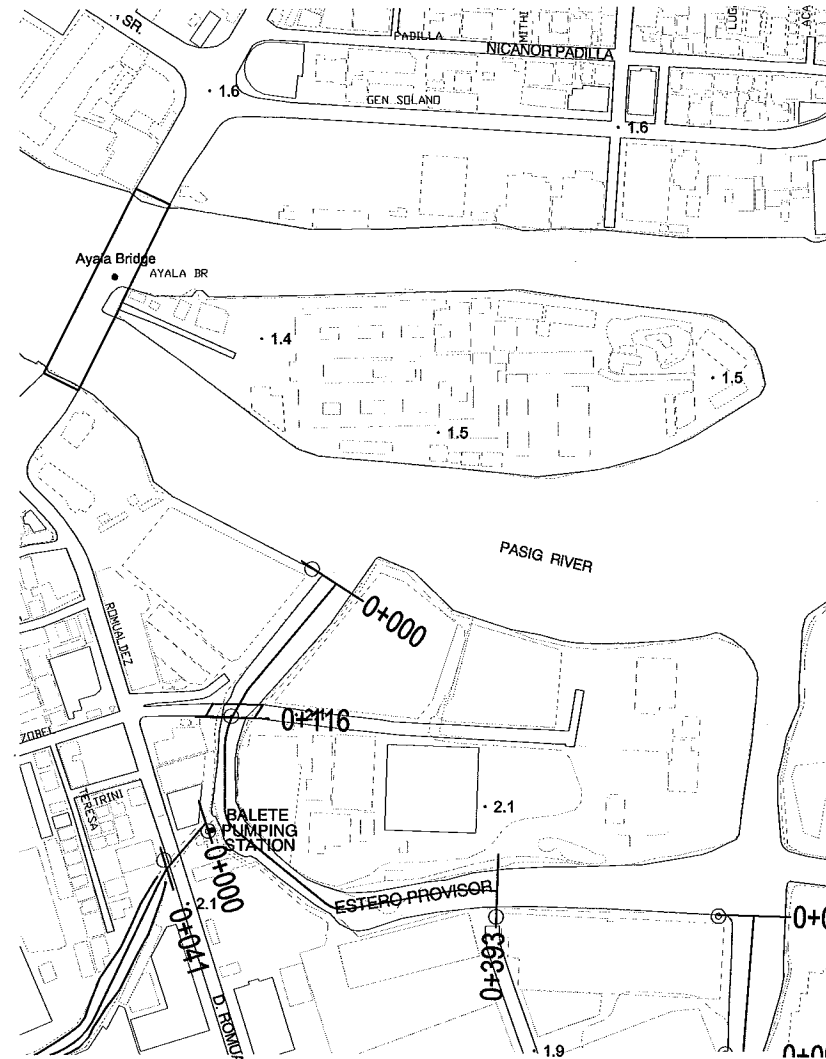
CROSS-SECTION
ESTERO DE VALENCIA (NE20)
(STA. 0+807 - STA. 1+091)

SHT. NO

CS-08
02 | 02

ESTERO DE PROVVISOR

(SE01)



CROSS-SECTION LOCATION

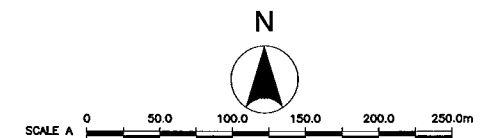
REFERENCE POINTS:

| STATION | EASTING | NORTHING |
|---------|------------|-------------|
| 0+000 | 498536.541 | 1613546.049 |
| 0+200 | 498478.712 | 1613448.786 |
| 0+393 | 498658.904 | 1613312.291 |

ESTERO DE PROVISOR (SE01)

1 TOPOGRAPHIC MAP

CL-09 SCALE : A



CONSULTANTS

PACIFIC CONSULTANTS INTERNATIONAL
IN ASSOCIATION WITH
 NIKKEN CONSULTANTS, INC.

REPUBLIC OF THE PHILIPPINES

JAPAN INTERNATIONAL COOPERATION AGENCY
FOR
 DEPARTMENT OF PUBLIC WORKS AND HIGHWAYS
 METROPOLITAN MANILA DEVELOPMENT
AUTHORITY

PROJECT & LOCATION:

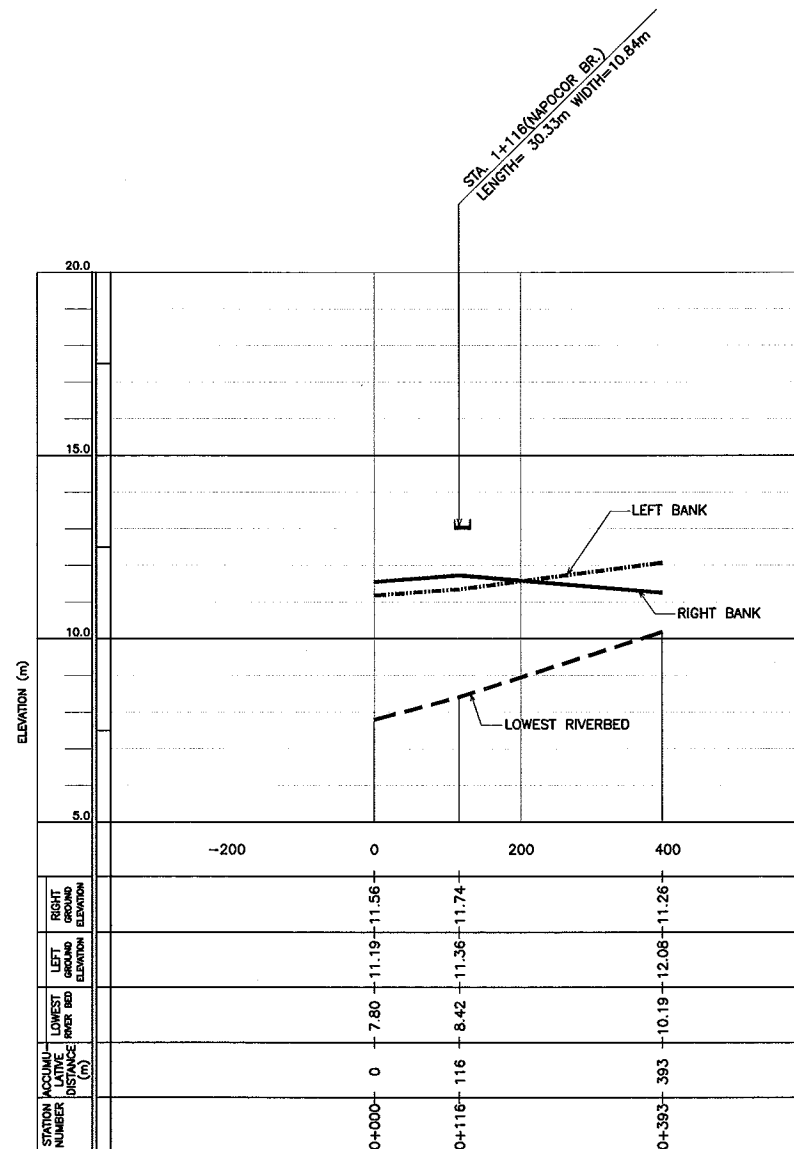
THE STUDY ON DRAINAGE IMPROVEMENT
IN THE CORE AREA OF METROPOLITAN MANILA

SHT. CONTENTS:

CROSS-SECTION LOCATION
ESTERO DE PROVISOR (SE01)
(STA. 0+000 ~ STA. 0+393)

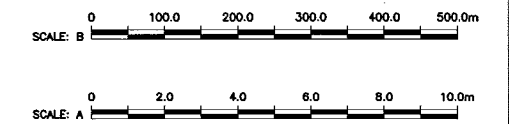
SHT. NO

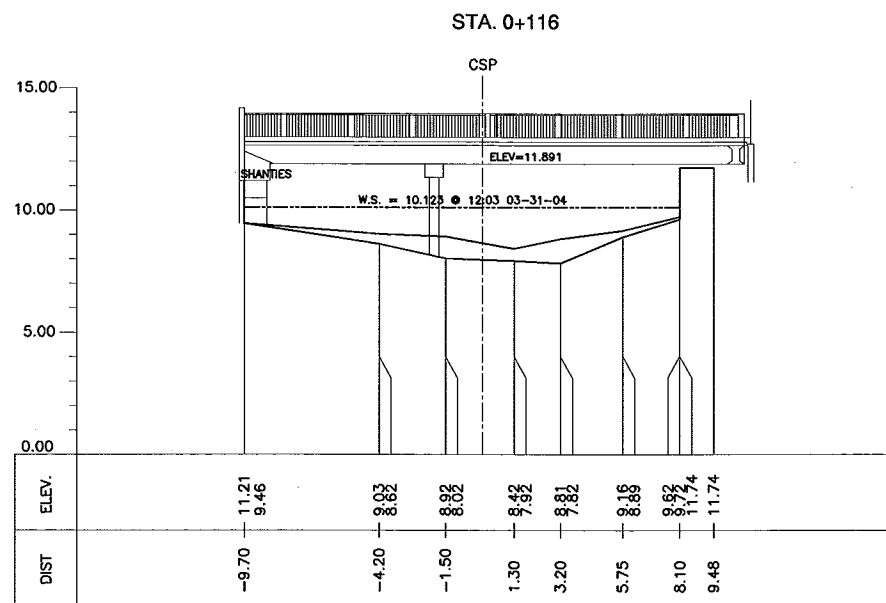
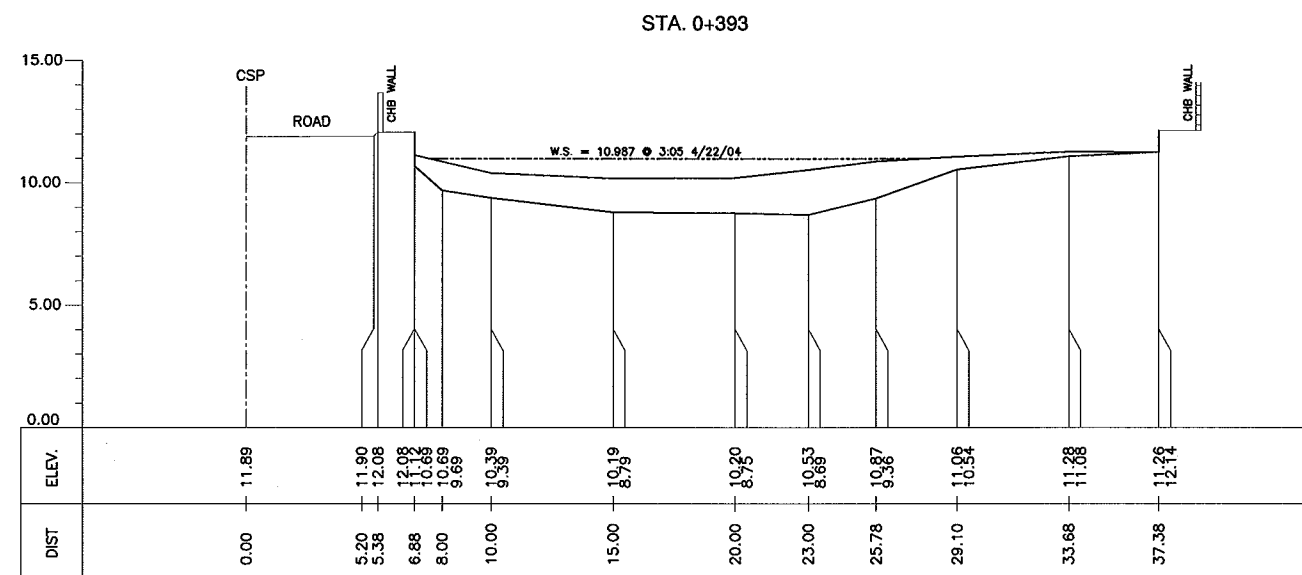
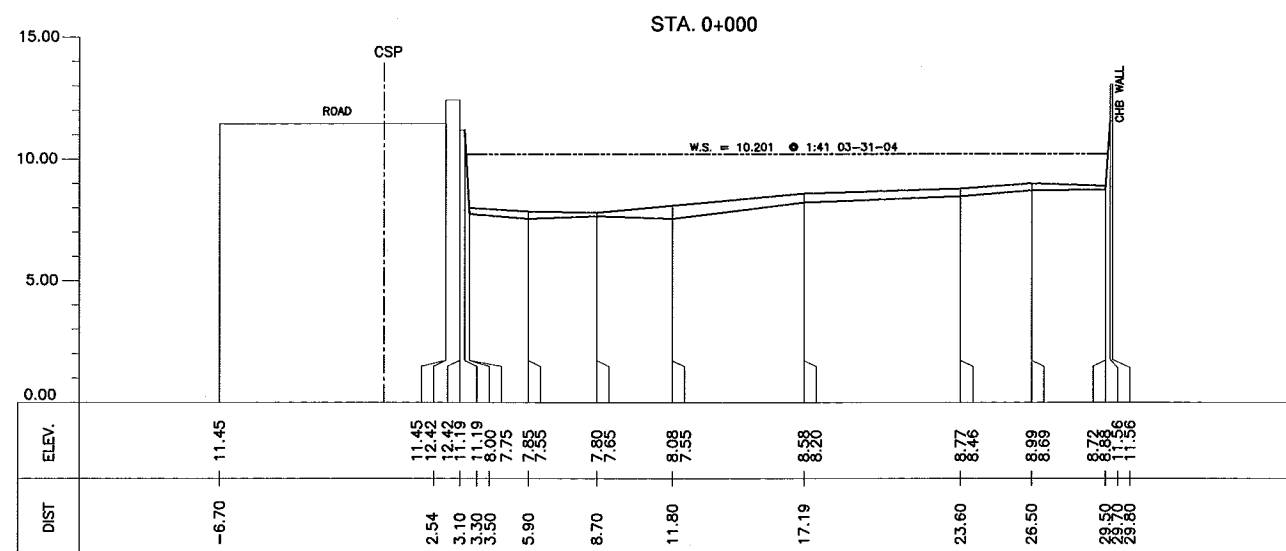
CL-09
01 | 01



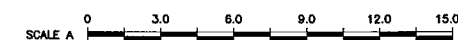
LEGEND:
 ——— : RIGHT BANK
 - - - - : LEFT BANK
 - - - - : LOWEST RIVERBED
 ┌───┐ : BRIDGE

1 LONGITUDINAL PROFILE
 LP-09 VER. = SCALE : A / HOR. = SCALE : B





1 CROSS-SECTION
CS-09 SCALE : A



CONSULTANTS

PACIFIC CONSULTANTS INTERNATIONAL
IN ASSOCIATION WITH
NIKKEN CONSULTANTS, INC.

REPUBLIC OF THE PHILIPPINES

JICA JAPAN INTERNATIONAL COOPERATION AGENCY
FOR
DEPARTMENT OF PUBLIC WORKS AND HIGHWAYS
METROPOLITAN MANILA DEVELOPMENT AUTHORITY

PROJECT & LOCATION:

THE STUDY ON DRAINAGE IMPROVEMENT
IN THE CORE AREA OF METROPOLITAN MANILA

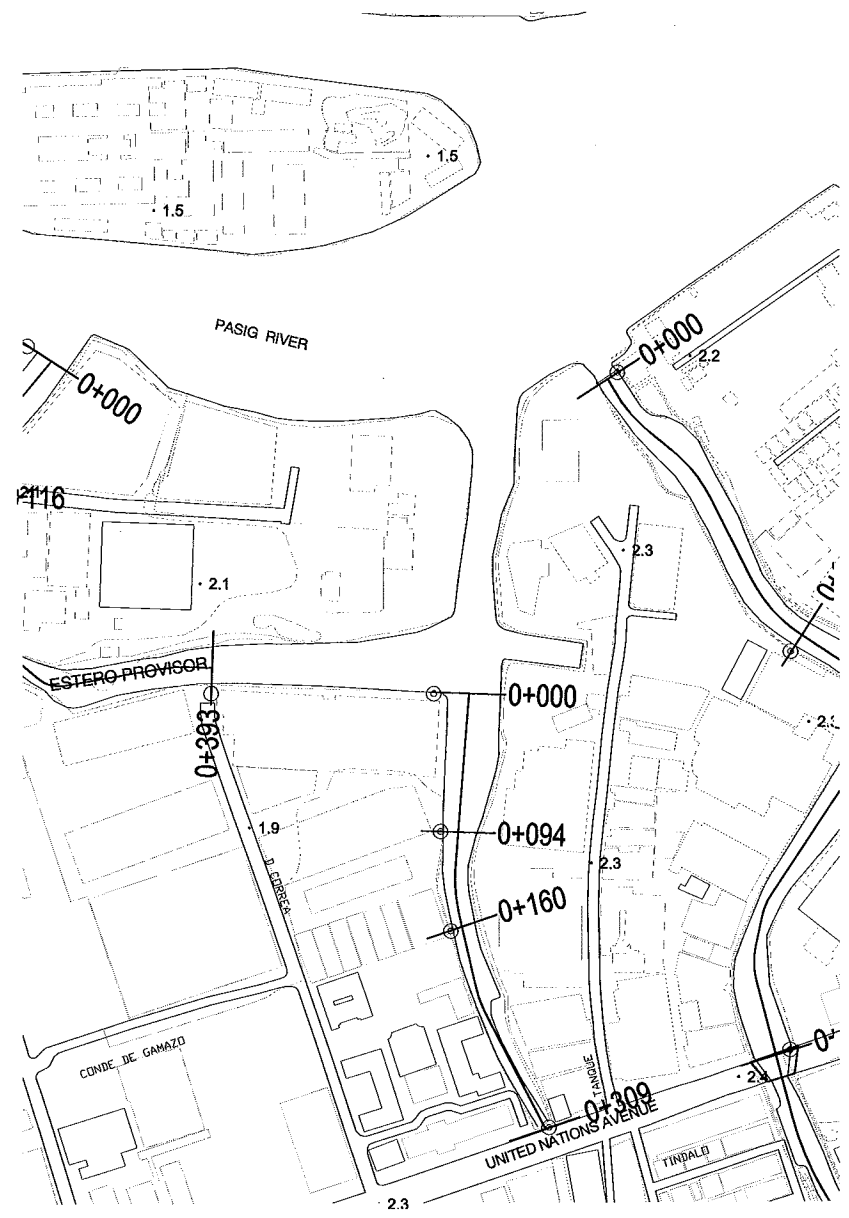
SHT. CONTENTS:

CROSS-SECTION
ESTERO DE PROVISO (SE01)
(STA. 0+000 ~ STA. 0+393)

SHT. NO

CS-09
01 | 01

ESTERO DE TANQUE (SE02)



CROSS-SECTION LOCATION

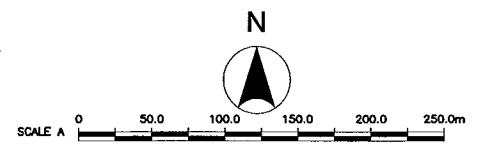
REFERENCE POINTS:

| STATION | EASTING | NORTHING |
|------------|------------|-------------|
| STA. 0+000 | 498810.386 | 1613312.553 |
| STA. 0+094 | 498814.94 | 1613218.62 |
| STA. 0+160 | 498821.97 | 1613150.86 |
| STA. 0+309 | 498888.97 | 1613017.01 |

1
CL-10

ESTERO DE TANQUE (SE02)
TOPOGRAPHIC MAP

SCALE : A



CONSULTANTS

PACIFIC CONSULTANTS INTERNATIONAL
IN ASSOCIATION WITH
 NIKKEN CONSULTANTS, INC.

REPUBLIC OF THE PHILIPPINES

JICA JAPAN INTERNATIONAL COOPERATION AGENCY
FOR
 DEPARTMENT OF PUBLIC WORKS AND HIGHWAYS
 METROPOLITAN MANILA DEVELOPMENT
AUTHORITY

PROJECT & LOCATION:

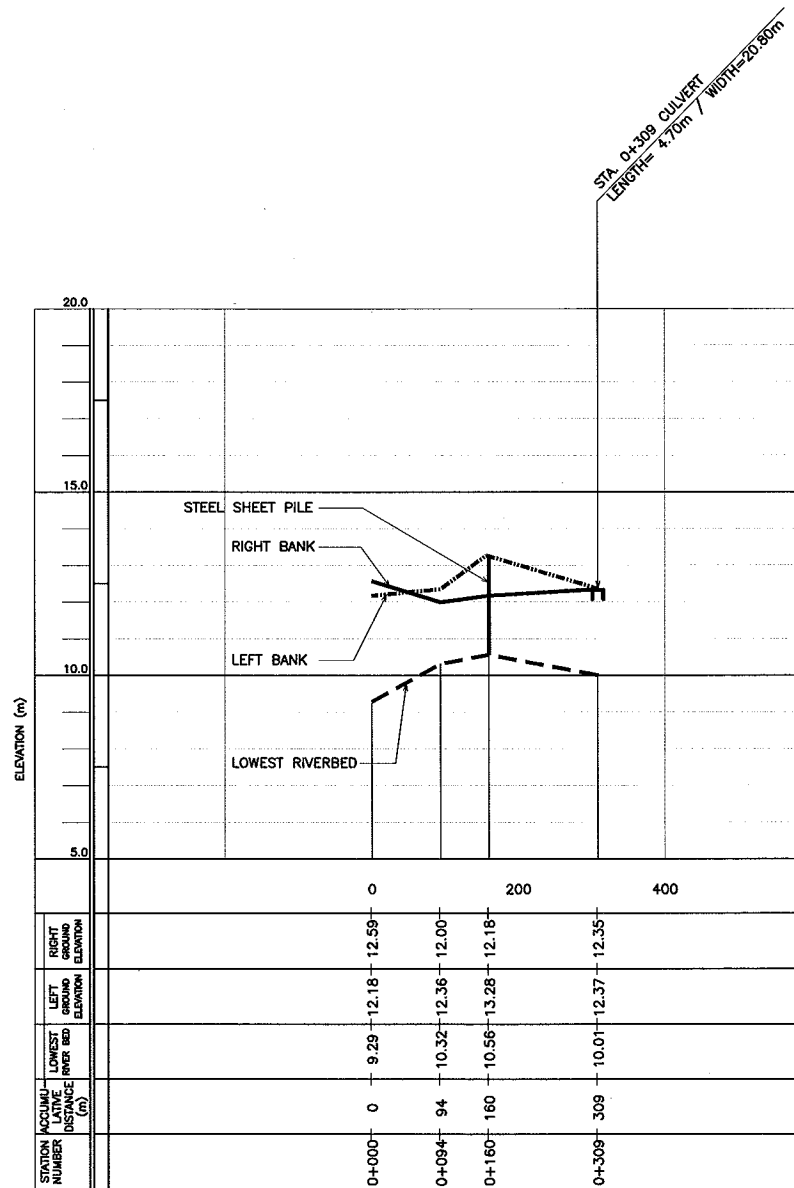
THE STUDY ON DRAINAGE IMPROVEMENT
IN THE CORE AREA OF METROPOLITAN MANILA

SHT. CONTENTS:

CROSS-SECTION LOCATION
ESTERO DE TANQUE (SE02)
(STA. 0+000 - STA. 0+309)

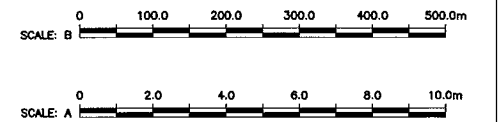
SHT. NO

CL-10
01 | 01

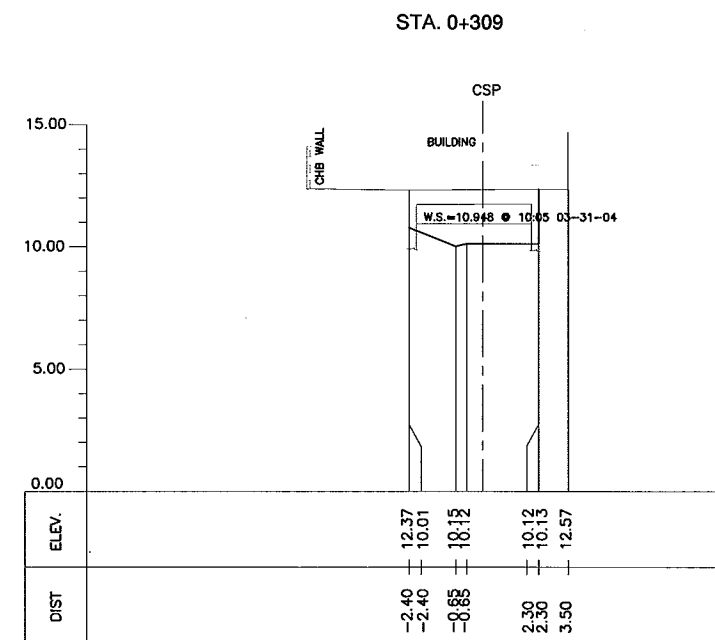
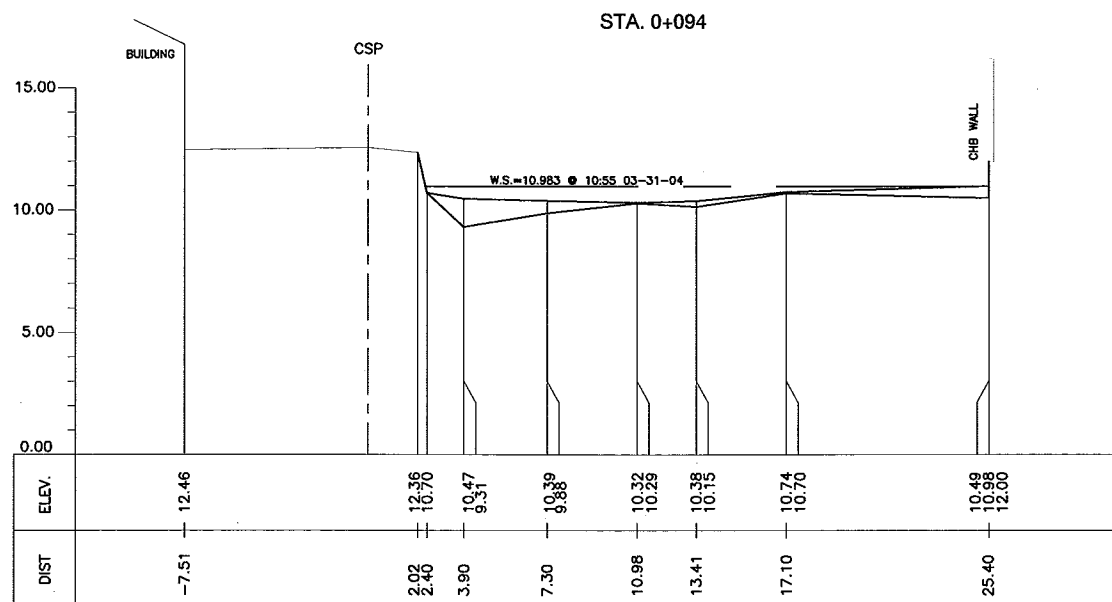
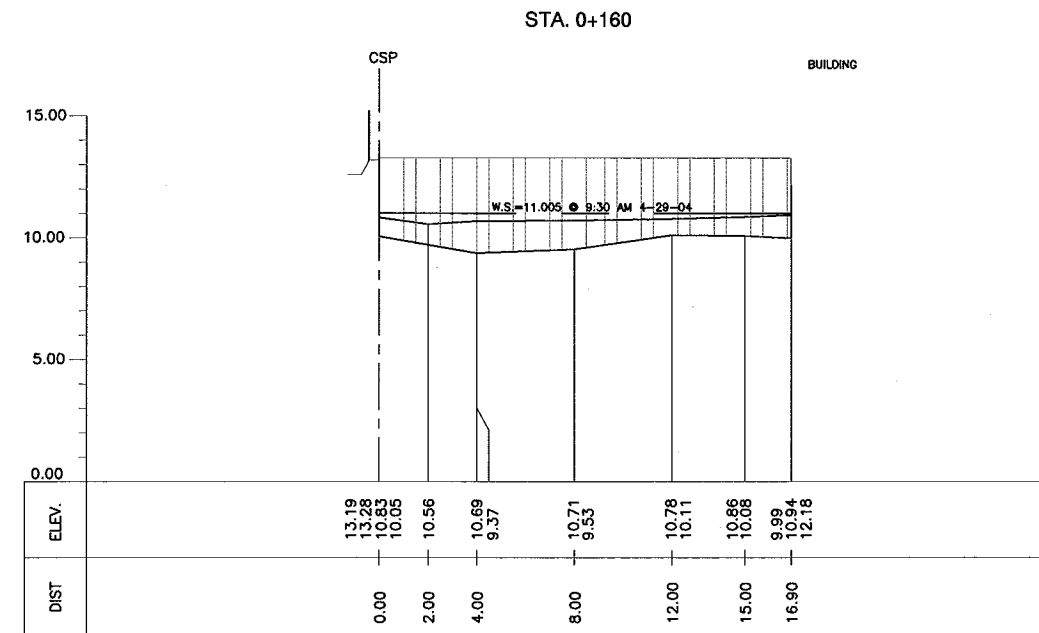
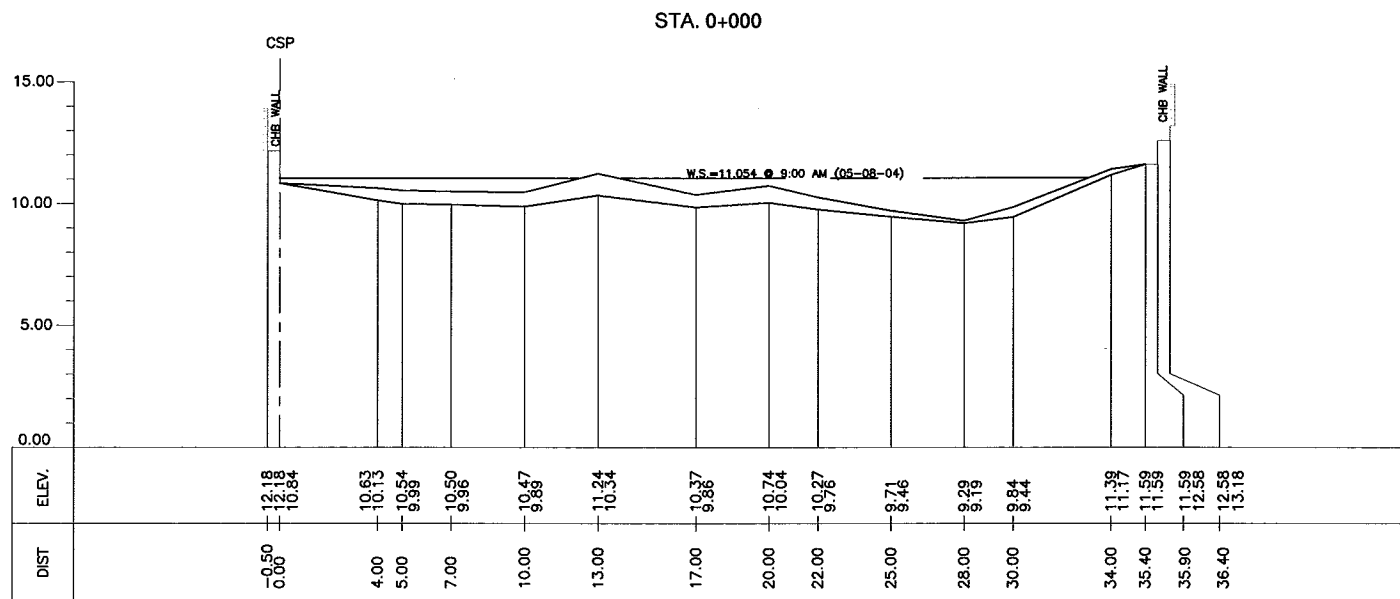


LEGEND:
 ———: RIGHT BANK
 - - - - : LEFT BANK
 - - - - : LOWEST RIVERBED
 ▭ : CULVERT

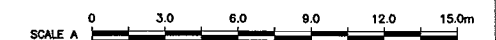
1 LONGITUDINAL PROFILE
 LP-10 VER. = SCALE : A / HOR. = SCALE : B



| | | | | | | |
|---|--|--|--|--|---|------------------------------------|
| CONSULTANTS PACIFIC CONSULTANTS INTERNATIONAL IN ASSOCIATION WITH NIKKEN CONSULTANTS, INC. | | REPUBLIC OF THE PHILIPPINES JAPAN INTERNATIONAL COOPERATION AGENCY FOR DEPARTMENT OF PUBLIC WORKS AND HIGHWAYS METROPOLITAN MANILA DEVELOPMENT AUTHORITY | | PROJECT & LOCATION: THE STUDY ON DRAINAGE IMPROVEMENT IN THE CORE AREA OF METROPOLITAN MANILA | SHT. CONTENTS: LONGITUDINAL PROFILE ESTERO DE TANQUE (SE02) (STA. 0+000~ STA. 0+309) | SHT. NO LP-10 01 01 |
|---|--|--|--|--|---|------------------------------------|



1 CROSS-SECTION
CS-10 SCALE : A



CONSULTANTS

PACIFIC CONSULTANTS INTERNATIONAL
IN ASSOCIATION WITH
NIKKEN CONSULTANTS, INC.

REPUBLIC OF THE PHILIPPINES

JICA JAPAN INTERNATIONAL COOPERATION AGENCY
FOR
DEPARTMENT OF PUBLIC WORKS AND HIGHWAYS
METROPOLITAN MANILA DEVELOPMENT
AUTHORITY

PROJECT & LOCATION:

THE STUDY ON DRAINAGE IMPROVEMENT
IN THE CORE AREA OF METROPOLITAN MANILA

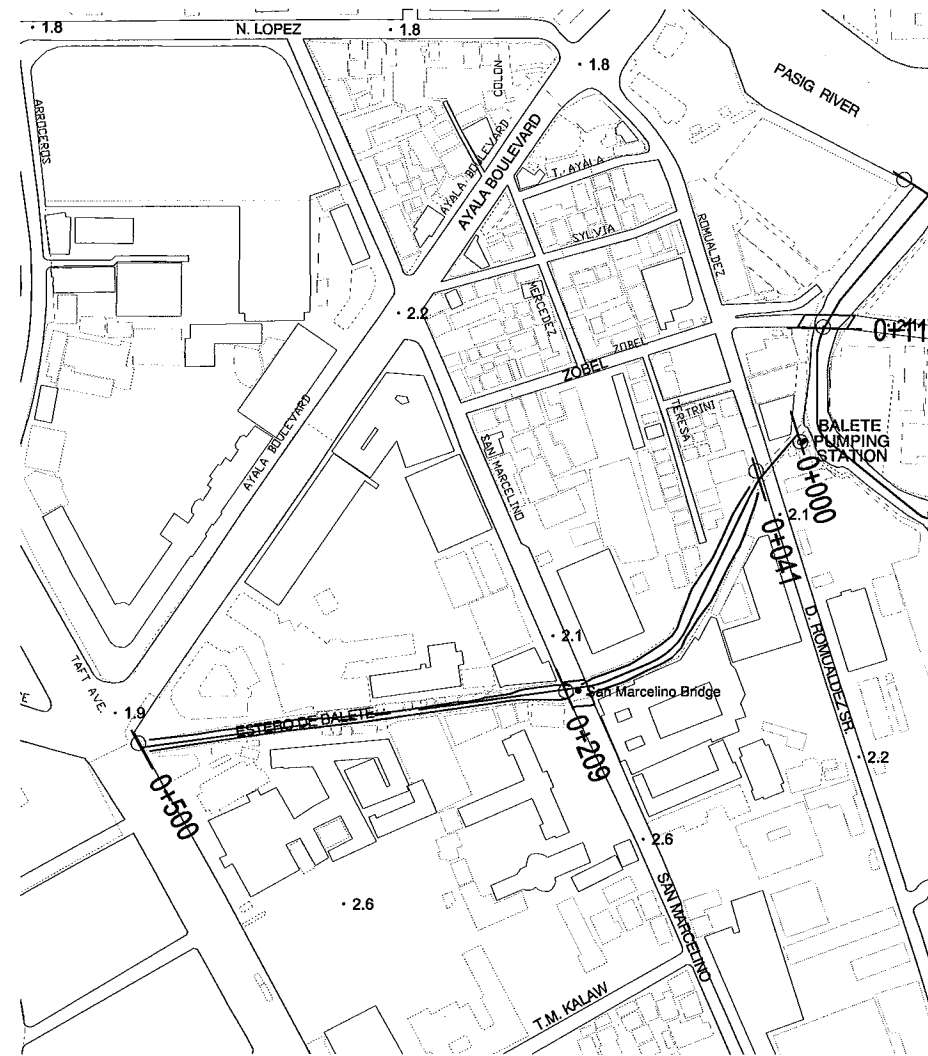
SHT. CONTENTS:

CROSS-SECTION
ESTERO DE TANQUE (SE02)
(STA. 0+000 ~ STA. 0+309)

SHT. NO

CS-10
01 | 01

ESTERO DE BALETE (SE03)

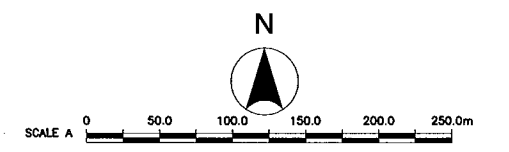


CROSS-SECTION LOCATION

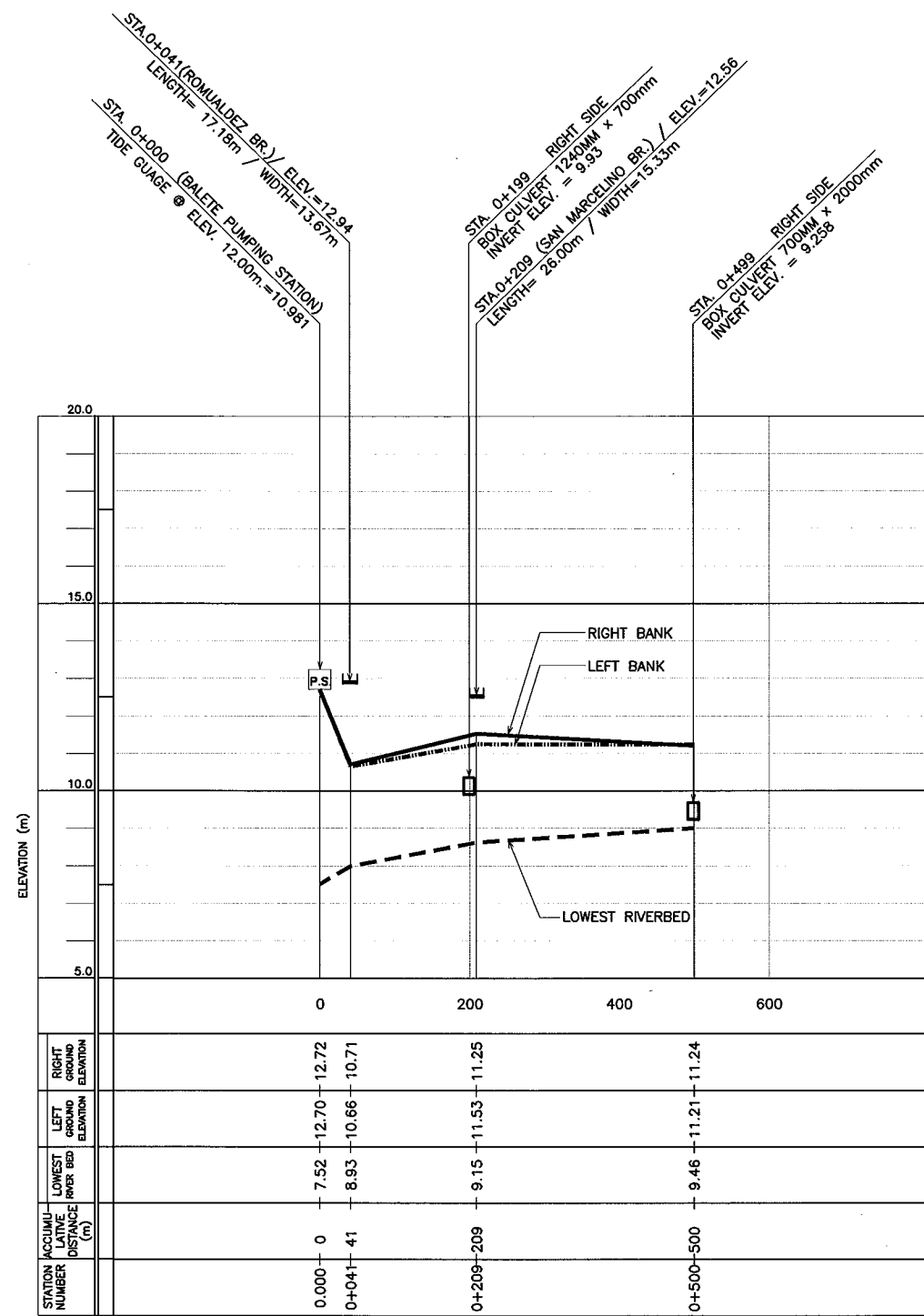
REFERENCE POINTS:

| STATION | EASTING | NORTHING |
|------------|-----------|------------|
| STA. 0+000 | 498463.05 | 1613370.51 |
| STA. 0+041 | 498432.84 | 1613350.64 |
| STA. 0+209 | 498302.98 | 1613200.69 |
| STA. 0+500 | 498011.93 | 1613165.01 |

1
ESTERO DE BALETE (SE03)
TOPOGRAPHIC MAP
CL-11 SCALE : A

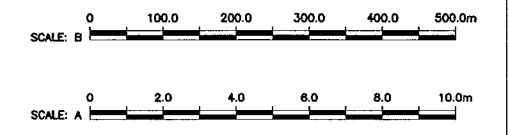


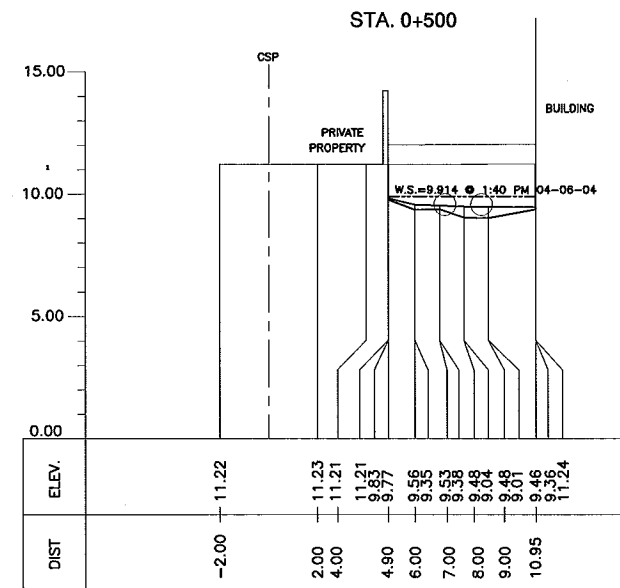
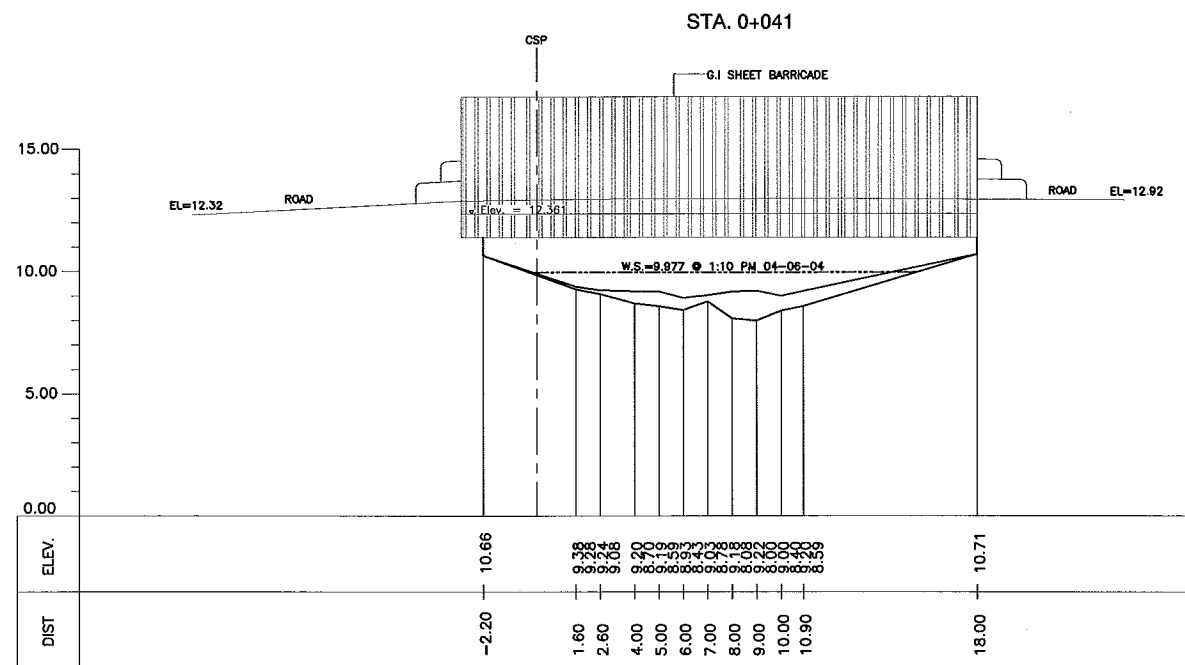
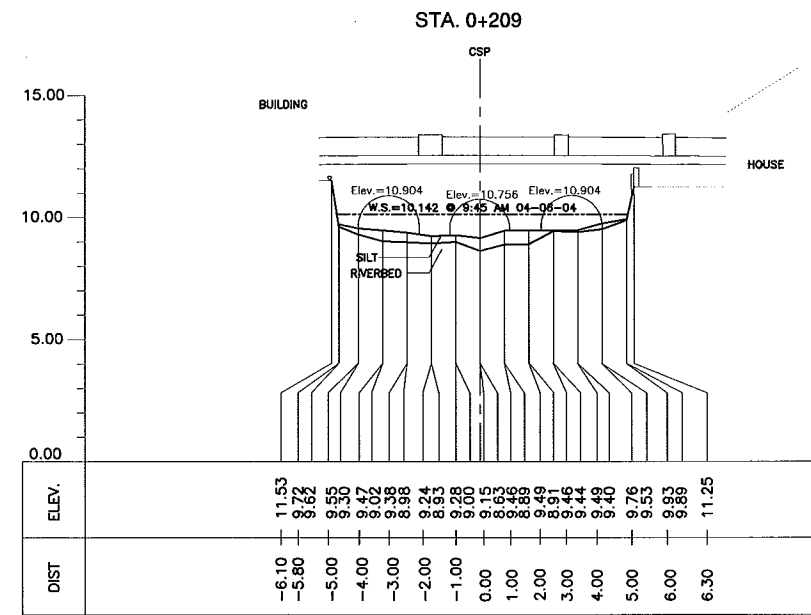
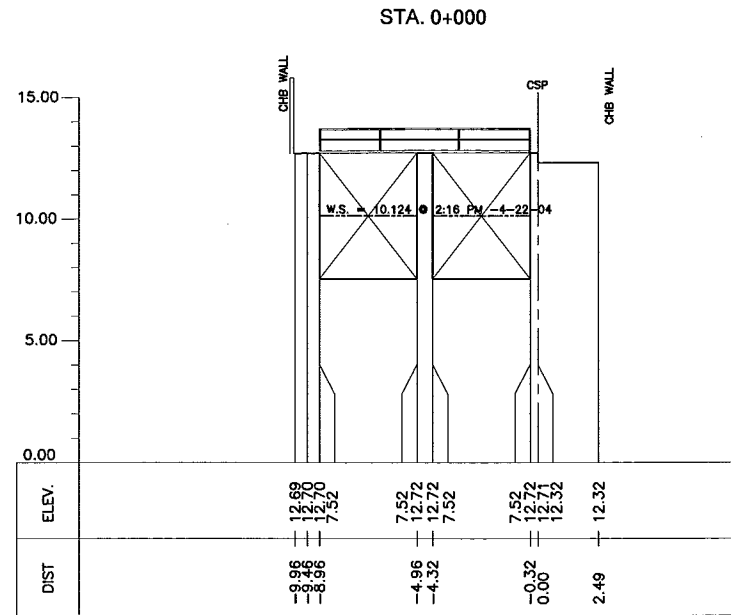
| | | | | | | |
|-------------|--|---|--|--|---|----------------|
| CONSULTANTS | | REPUBLIC OF THE PHILIPPINES | | PROJECT & LOCATION: | SHT. CONTENTS: | SHT. NO |
| | PACIFIC CONSULTANTS INTERNATIONAL IN ASSOCIATION WITH NIKKEN CONSULTANTS, INC. | JICA JAPAN INTERNATIONAL COOPERATION AGENCY FOR DEPARTMENT OF PUBLIC WORKS AND HIGHWAYS | METROPOLITAN MANILA DEVELOPMENT AUTHORITY | THE STUDY ON DRAINAGE IMPROVEMENT IN THE CORE AREA OF METROPOLITAN MANILA | CROSS-SECTION LOCATION ESTERO DE BALETE (SE03) (STA. 0+000 ~ STA.0+500) | CL-11 01 01 |



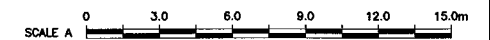
- LEGEND:
- : RIGHT BANK
 - : LEFT BANK
 - - - -: LOWEST RIVERBED
 - : BOX CULVERT
 - └─: BRIDGE
 - P.S.: PUMPING STATION

1
LONGITUDINAL PROFILE
 LP-11 VER. = SCALE : A / HOR. = SCALE : B





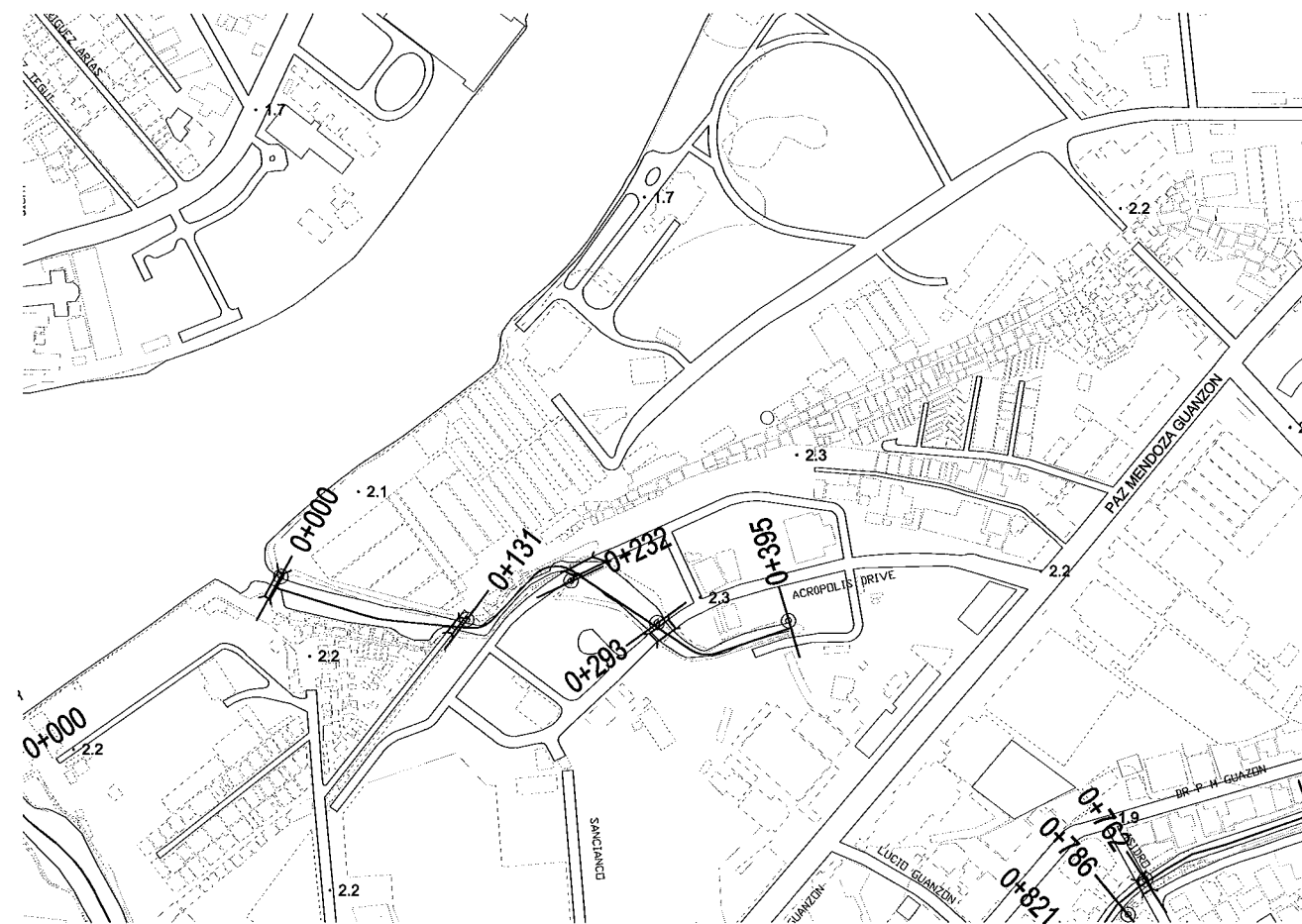
1 CROSS-SECTION
CS-11 SCALE : A



| | | | | | | |
|--------------------|--|------------------------------------|--|---|---|---|
| <p>CONSULTANTS</p> | | <p>REPUBLIC OF THE PHILIPPINES</p> | | <p>PROJECT & LOCATION:</p> <p>THE STUDY ON DRAINAGE IMPROVEMENT IN THE CORE AREA OF METROPOLITAN MANILA</p> | <p>SHT. CONTENTS:</p> <p>CROSS-SECTION ESTERO DE BALETE (SE03) (STA. 0+000- STA. 0+500)</p> | <p>SHT. NO</p> <p>CS-11 01 01</p> |
|--------------------|--|------------------------------------|--|---|---|---|

ESTERO DE SANTIBAÑES

(SE04)

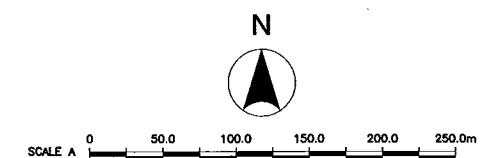


CROSS-SECTION LOCATION

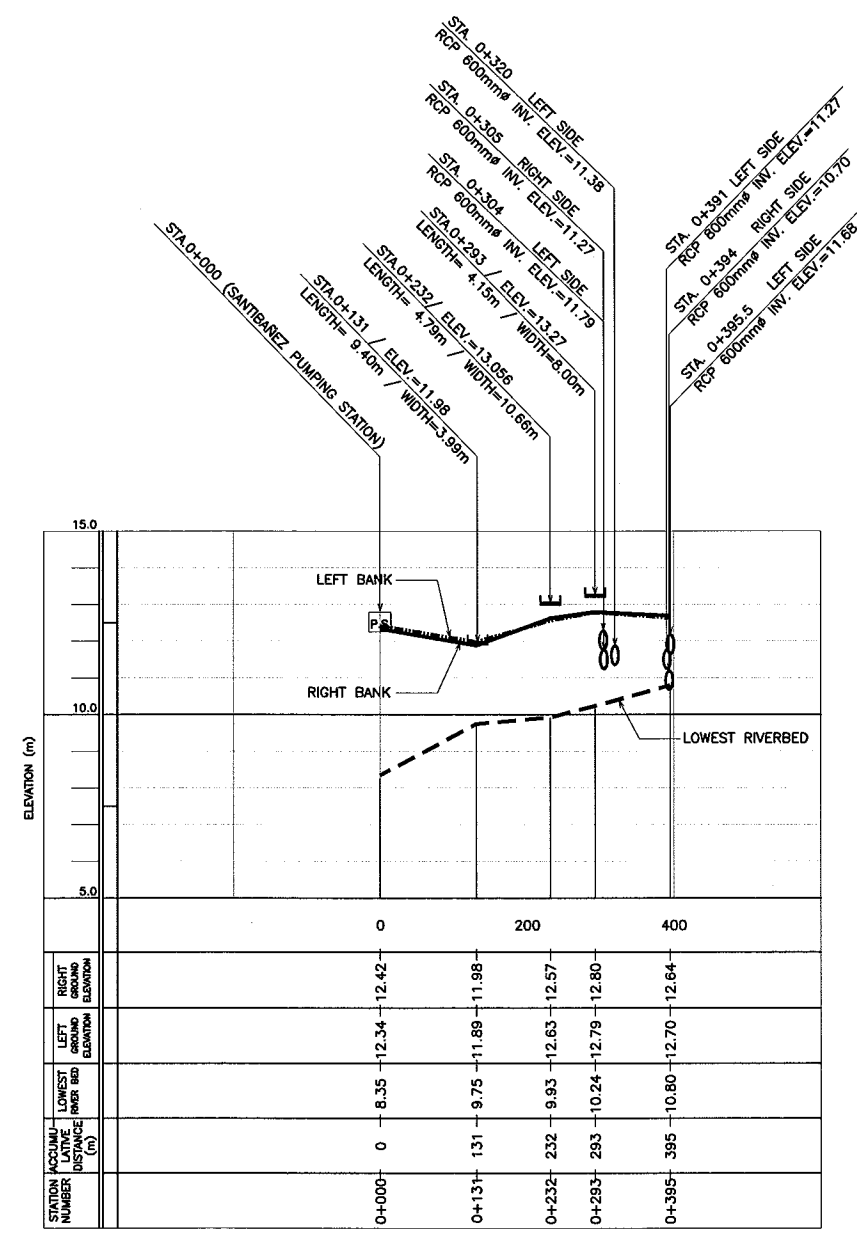
REFERENCE POINTS:

| STATION | EASTING | NORTHING |
|---------|------------|-------------|
| 0+000 | 499128.066 | 1613661.607 |
| 0+131 | 499256.092 | 1613632.092 |
| 0+232 | 499327.676 | 1613658.680 |
| 0+293 | 499386.891 | 1613629.839 |
| 0+395 | 499477.341 | 1613631.239 |

1 ESTERO DE SANTIBAÑES (SE04)
 TOPOGRAPHIC MAP
 CL-12 SCALE : A



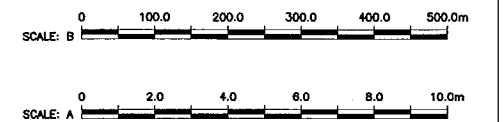
| | | | | |
|---------------------------|------------------------------------|--|---|---|
| <p>CONSULTANTS</p> | <p>REPUBLIC OF THE PHILIPPINES</p> | <p>PROJECT & LOCATION:</p> <p style="text-align: center;">THE STUDY ON DRAINAGE IMPROVEMENT IN THE CORE AREA OF METROPOLITAN MANILA</p> | <p>SHT. CONTENTS:</p> <p style="text-align: center;">CROSS-SECTION LOCATION ESTERO DE SANTIBAÑES (SE04) (STA. 0+000 ~ STA. 0+395)</p> | <p>SHT. NO</p> <div style="border: 1px solid black; border-radius: 50%; padding: 5px; width: 30px; margin: 0 auto;"> CL-12 01 01 </div> |
|---------------------------|------------------------------------|--|---|---|

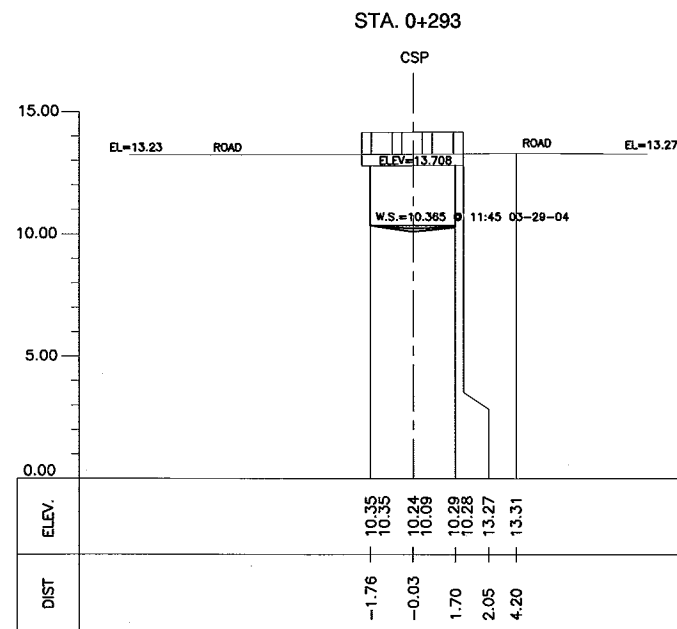
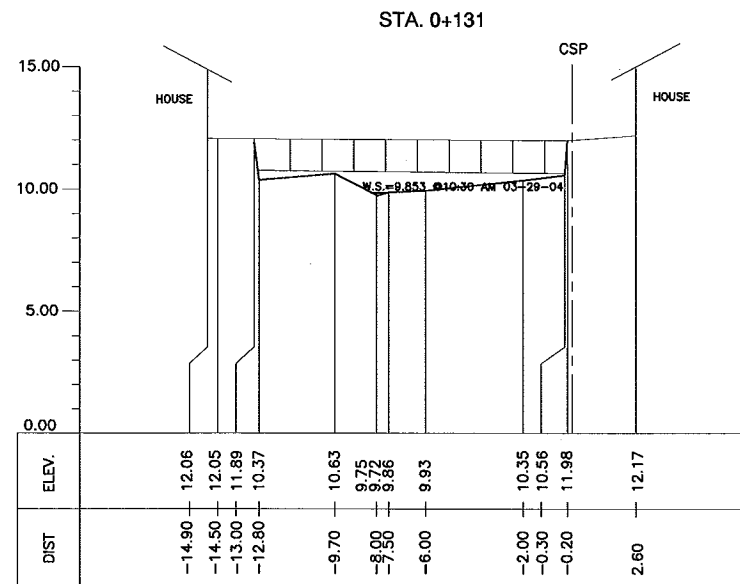
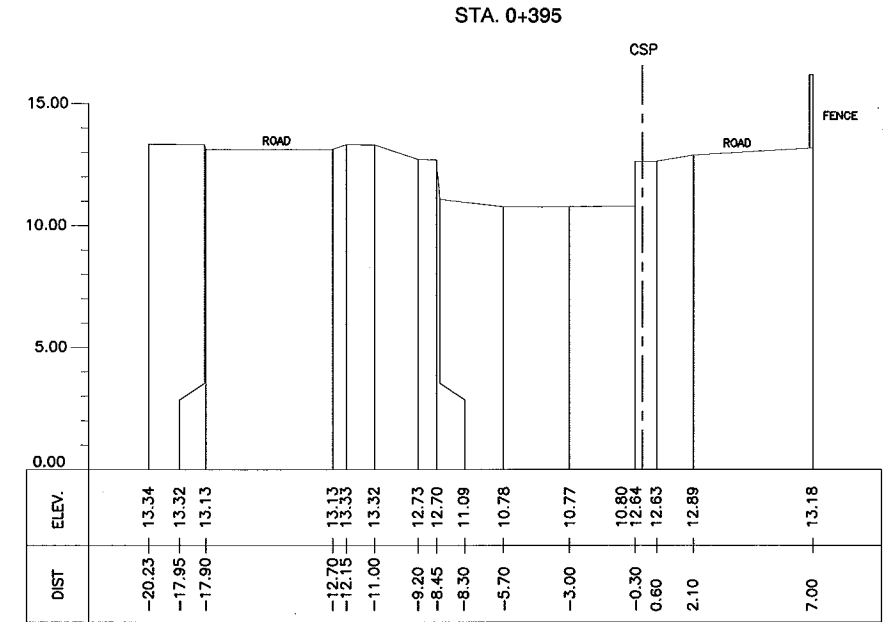
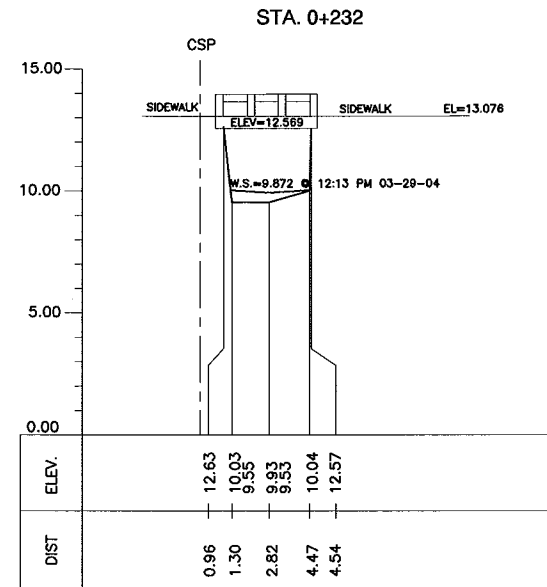
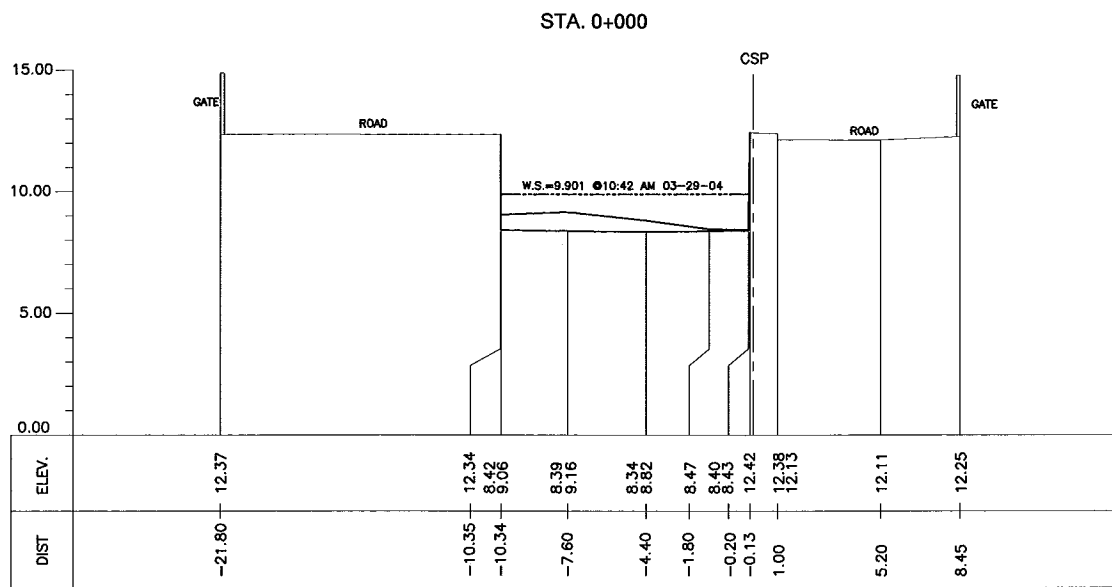


LEGEND:

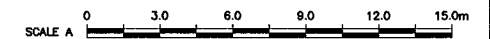
- : RIGHT BANK
- : LEFT BANK
- - - - : LOWEST RIVERBED
- ⌊ : BRIDGE
- : REINFORCE CONCRETE PIPE
- PS : PUMPING STATION

1 LONGITUDINAL PROFILE
 LP-12 VER. = SCALE : A / HOR. = SCALE : B





1 CROSS-SECTION
CS-12 SCALE : A



CONSULTANTS

PACIFIC CONSULTANTS INTERNATIONAL
IN ASSOCIATION WITH
NIKKEN CONSULTANTS, INC.

REPUBLIC OF THE PHILIPPINES

JICA JAPAN INTERNATIONAL COOPERATION AGENCY
FOR
DEPARTMENT OF PUBLIC WORKS AND HIGHWAYS
METROPOLITAN MANILA DEVELOPMENT
AUTHORITY

PROJECT & LOCATION:

THE STUDY ON DRAINAGE IMPROVEMENT
IN THE CORE AREA OF METROPOLITAN MANILA

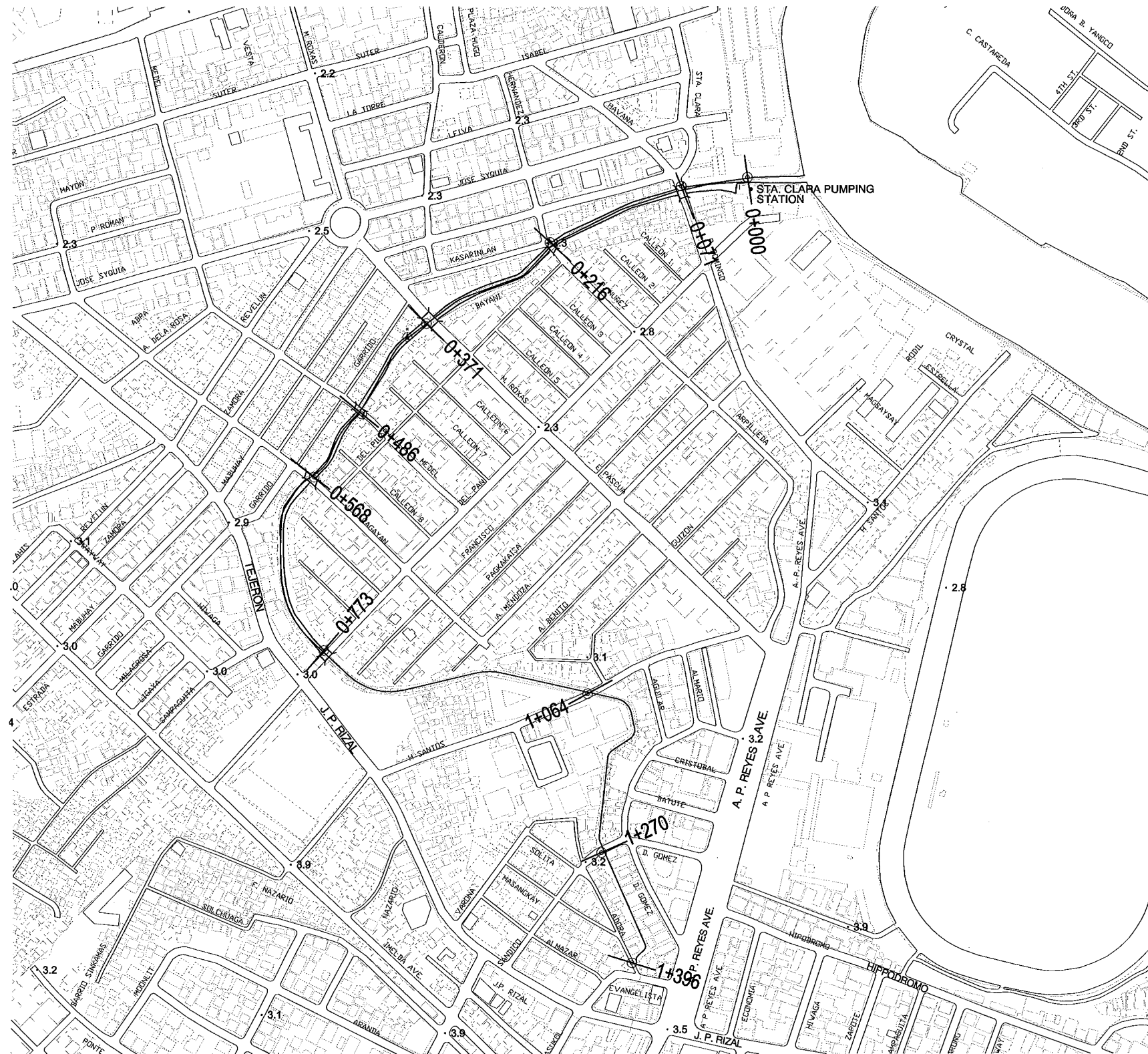
SHT. CONTENTS:

CROSS-SECTION
ESTERO DE SANTIBAÑES (SE04)
(STA. 0+000 - STA. 0+395)

SHT. NO

CS-12
01 01

STA. CLARA CREEK (SE05)



CROSS-SECTION LOCATION

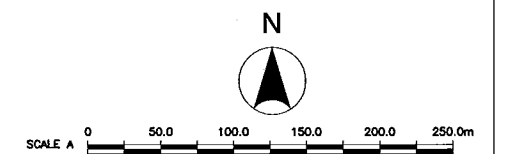
REFERENCE POINTS:

| STATION | EASTING | NORTHING |
|---------|------------|-------------|
| 0+000 | 501622.576 | 1612462.450 |
| 0+071 | 501554.944 | 1612453.526 |
| 0+216 | 501420.719 | 1612396.425 |
| 0+371 | 501294.561 | 1612313.249 |
| 0+486 | 501228.556 | 1612220.896 |
| 0+568 | 501179.975 | 1612156.160 |
| 0+773 | 501189.555 | 1611979.188 |
| 1+064 | 501458.768 | 1611935.205 |
| 1+270 | 501472.991 | 1611773.158 |
| 1+396 | 501503.950 | 1611660.542 |

1 STA. CLARA CREEK (SE05)
TOPOGRAPHIC MAP

1
CL-13

SCALE : A



CONSULTANTS

PACIFIC CONSULTANTS INTERNATIONAL
IN ASSOCIATION WITH
 NIKKEN CONSULTANTS, INC.

REPUBLIC OF THE PHILIPPINES

JAPAN INTERNATIONAL COOPERATION AGENCY
FOR
 DEPARTMENT OF PUBLIC WORKS AND HIGHWAYS
 METROPOLITAN MANILA DEVELOPMENT
AUTHORITY

PROJECT & LOCATION:

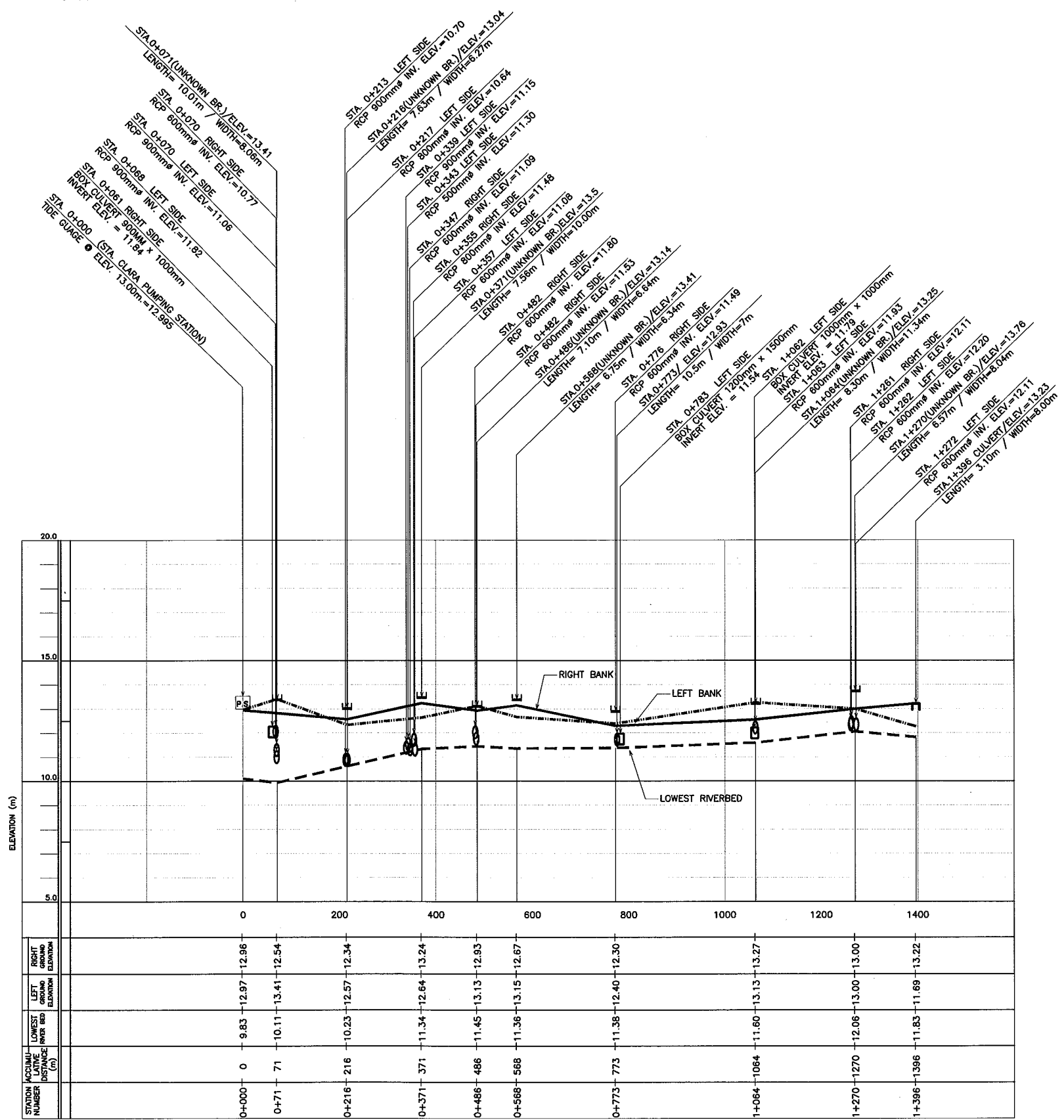
THE STUDY ON DRAINAGE IMPROVEMENT
IN THE CORE AREA OF METROPOLITAN MANILA

SHT. CONTENTS:

CROSS-SECTION LOCATION
STA. CLARA CREEK (SE05)
(STA. 0+000 ~ STA. 1+396)

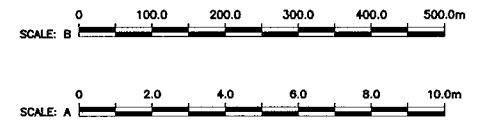
SHT. NO

CL-13
01 01



- LEGEND:
- : RIGHT BANK
 - : LEFT BANK
 - - - -: LOWEST RIVERBED
 - : BOX CULVERT
 - ┌: BRIDGE
 - : REINFORCE CONCRETE PIPE
 - PS: PUMPING STATION
 - ▭: CULVERT

1 LONGITUDINAL PROFILE
 LP-13 VER. = SCALE : A / HOR. = SCALE : B



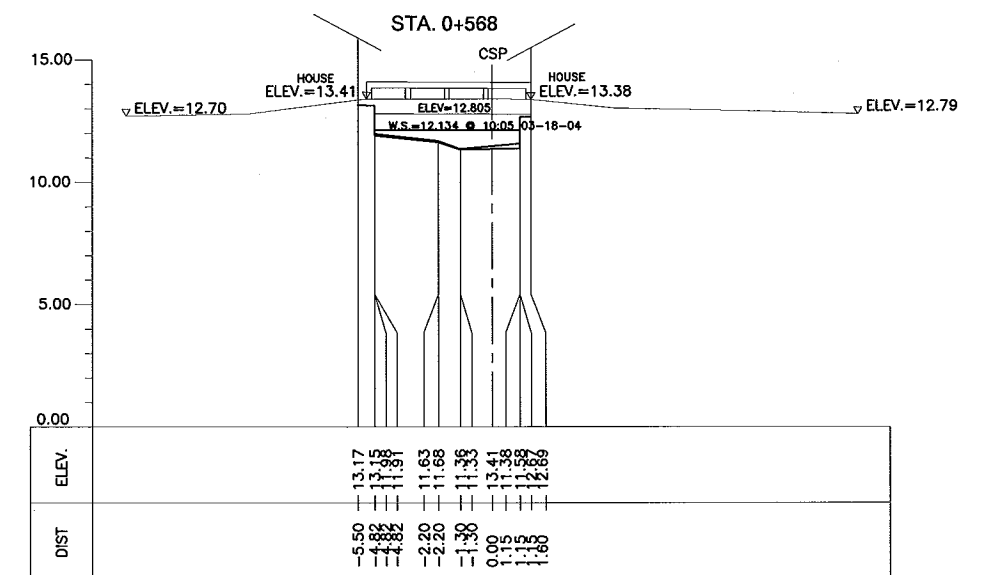
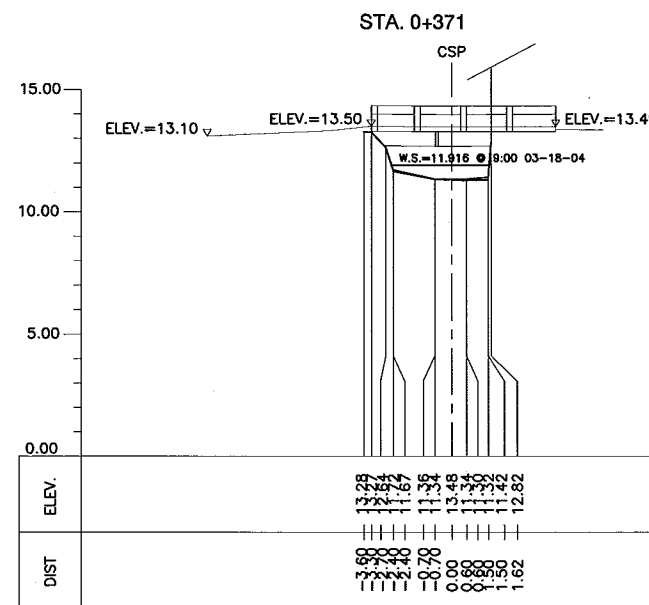
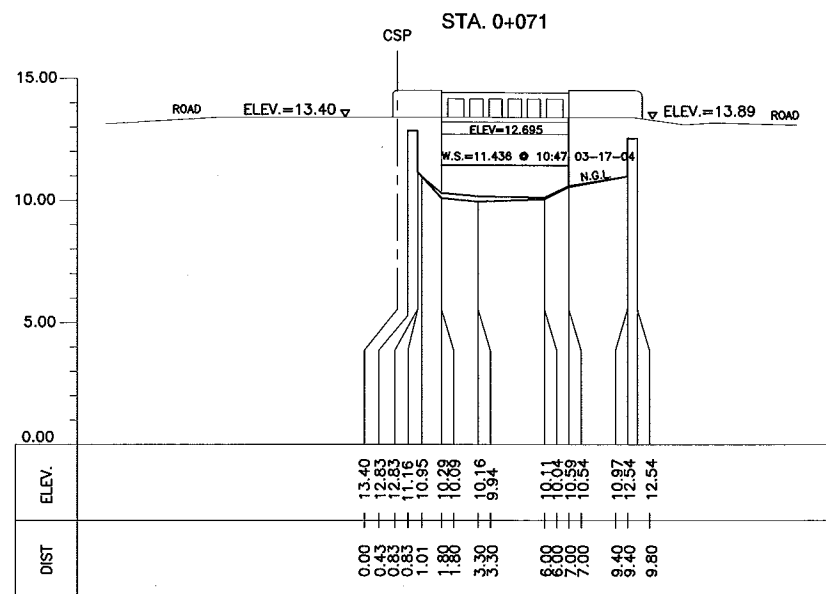
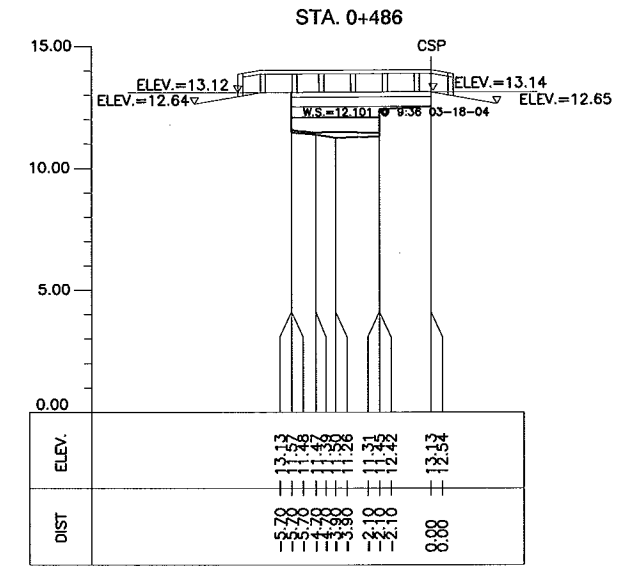
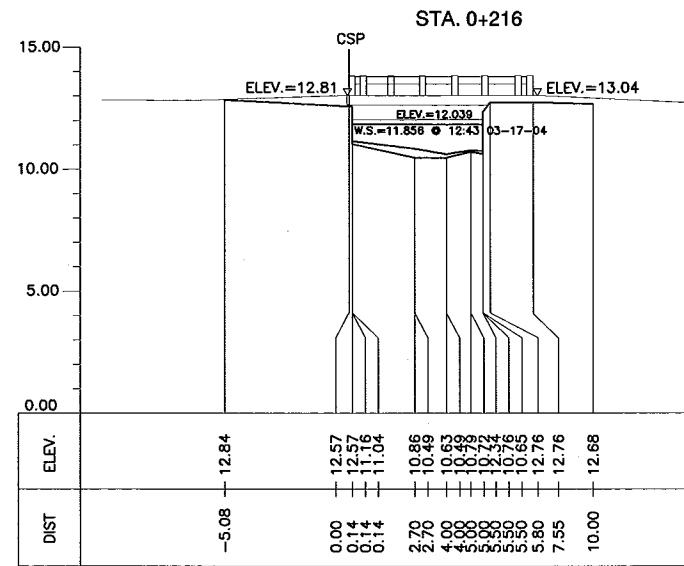
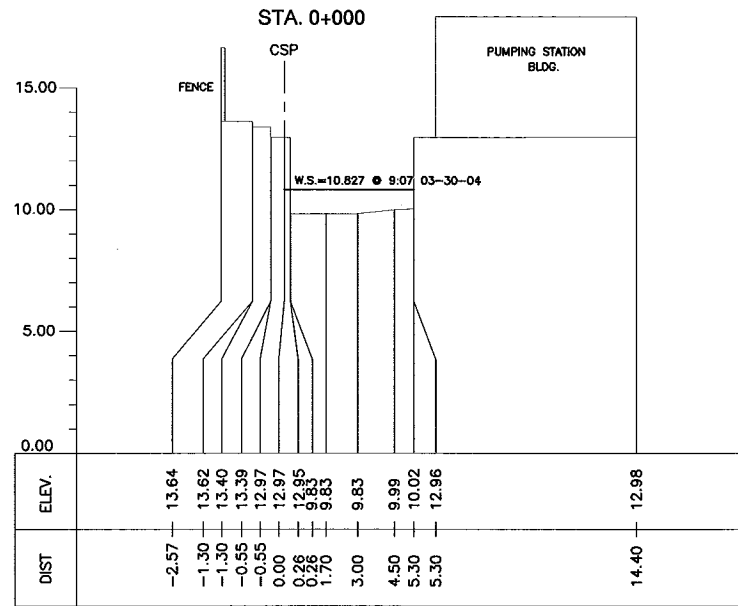
CONSULTANTS
 PACIFIC CONSULTANTS INTERNATIONAL
 IN ASSOCIATION WITH
 NIKKEN CONSULTANTS, INC.

REPUBLIC OF THE PHILIPPINES
 JICA JAPAN INTERNATIONAL COOPERATION AGENCY
 FOR
 DEPARTMENT OF PUBLIC WORKS AND HIGHWAYS
 METROPOLITAN MANILA DEVELOPMENT
 AUTHORITY

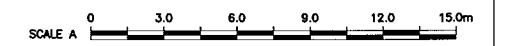
PROJECT & LOCATION:
**THE STUDY ON DRAINAGE IMPROVEMENT
 IN THE CORE AREA OF METROPOLITAN MANILA**

SHT. CONTENTS:
 LONGITUDINAL PROFILE
 STA. CLARA CREEK (SE05)
 (STA. 0+000~ STA. 1+396)

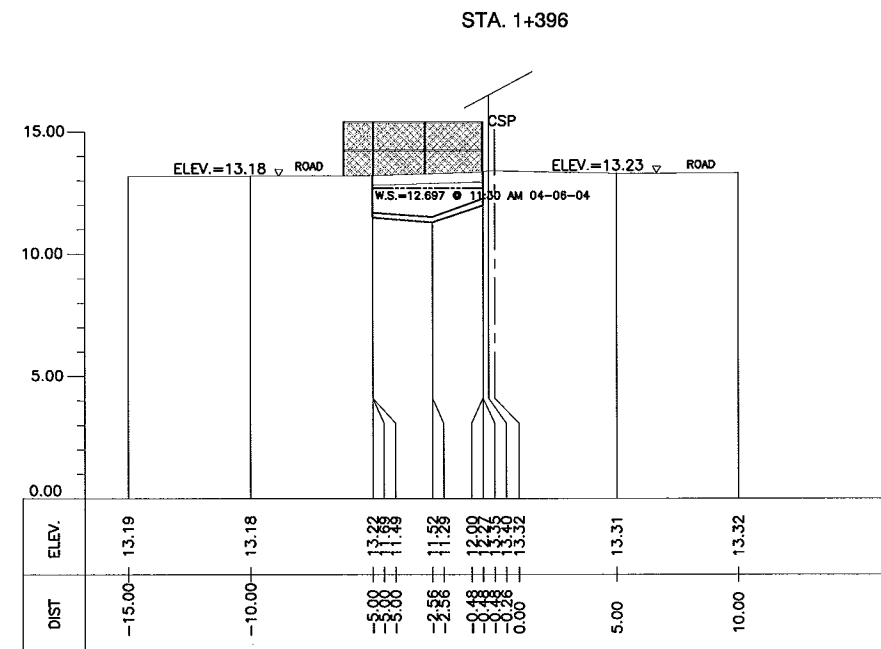
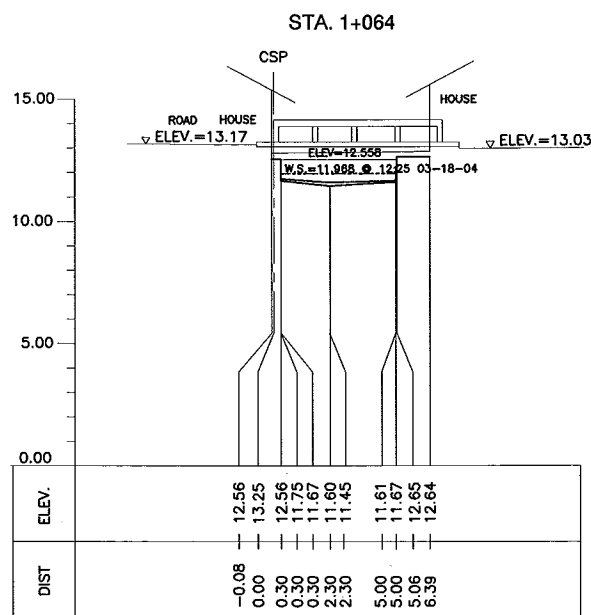
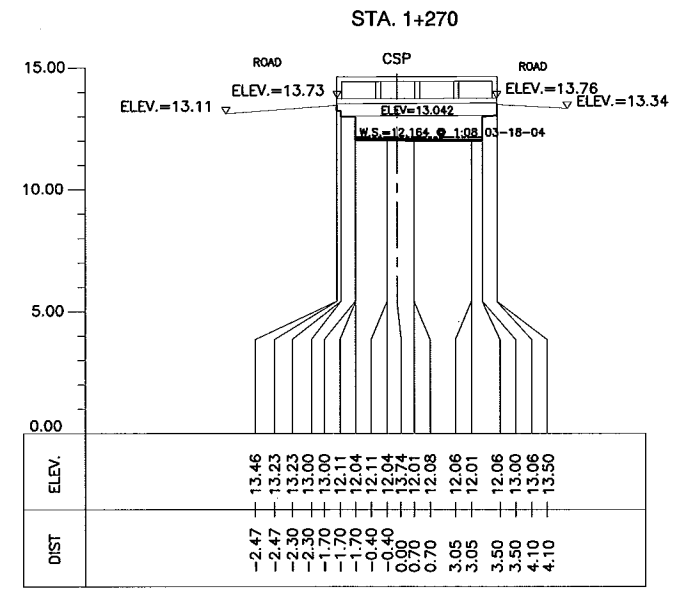
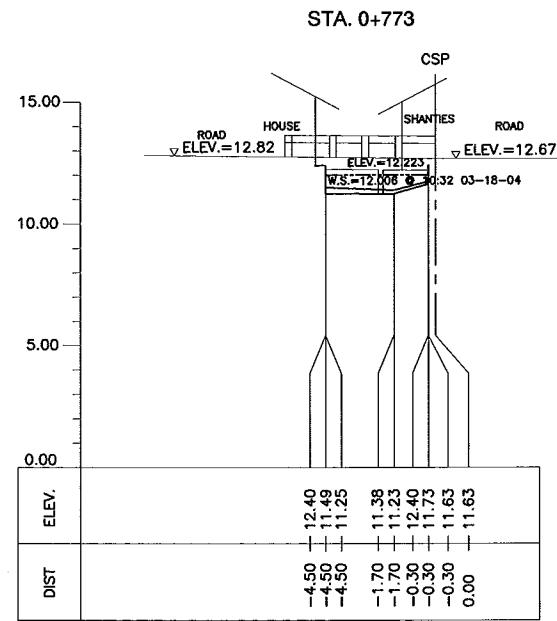
SHT. NO
 LP-13
 01 | 01



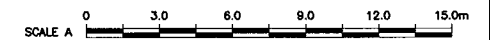
1 CROSS-SECTION
CS-13 SCALE : A



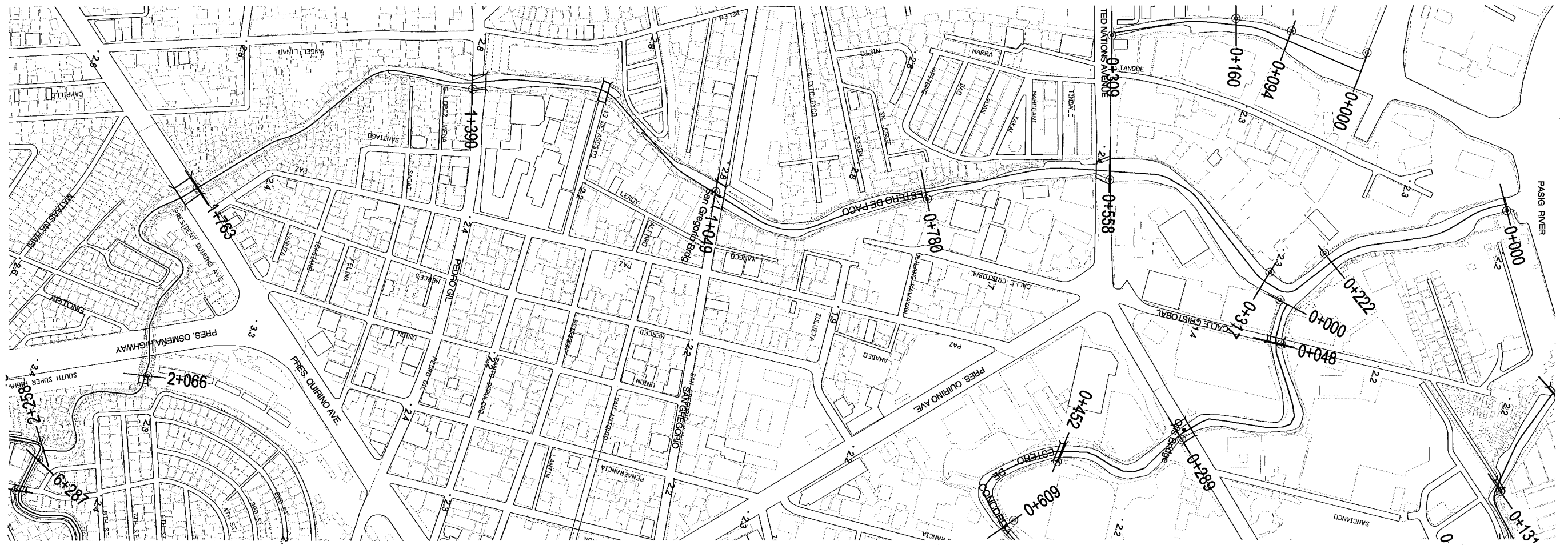
| | | | | | | |
|------------------------|--|--|--|--|--|----------------------------------|
| CONSULTANTS | | REPUBLIC OF THE PHILIPPINES | | PROJECT & LOCATION: THE STUDY ON DRAINAGE IMPROVEMENT IN THE CORE AREA OF METROPOLITAN MANILA | SHT. CONTENTS: CROSS-SECTION STA. CLARA CREEK (SE05) (STA. 0+000 ~ STA. 0+568) | SHT. NO CS-13 01 02 |
|------------------------|--|--|--|--|--|----------------------------------|



1 CROSS-SECTION
CS-13 SCALE : A



ESTERO DE PACO (SE06)

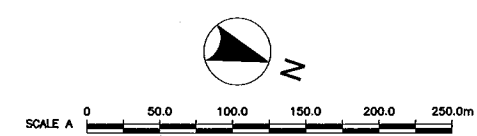


CROSS-SECTION LOCATION

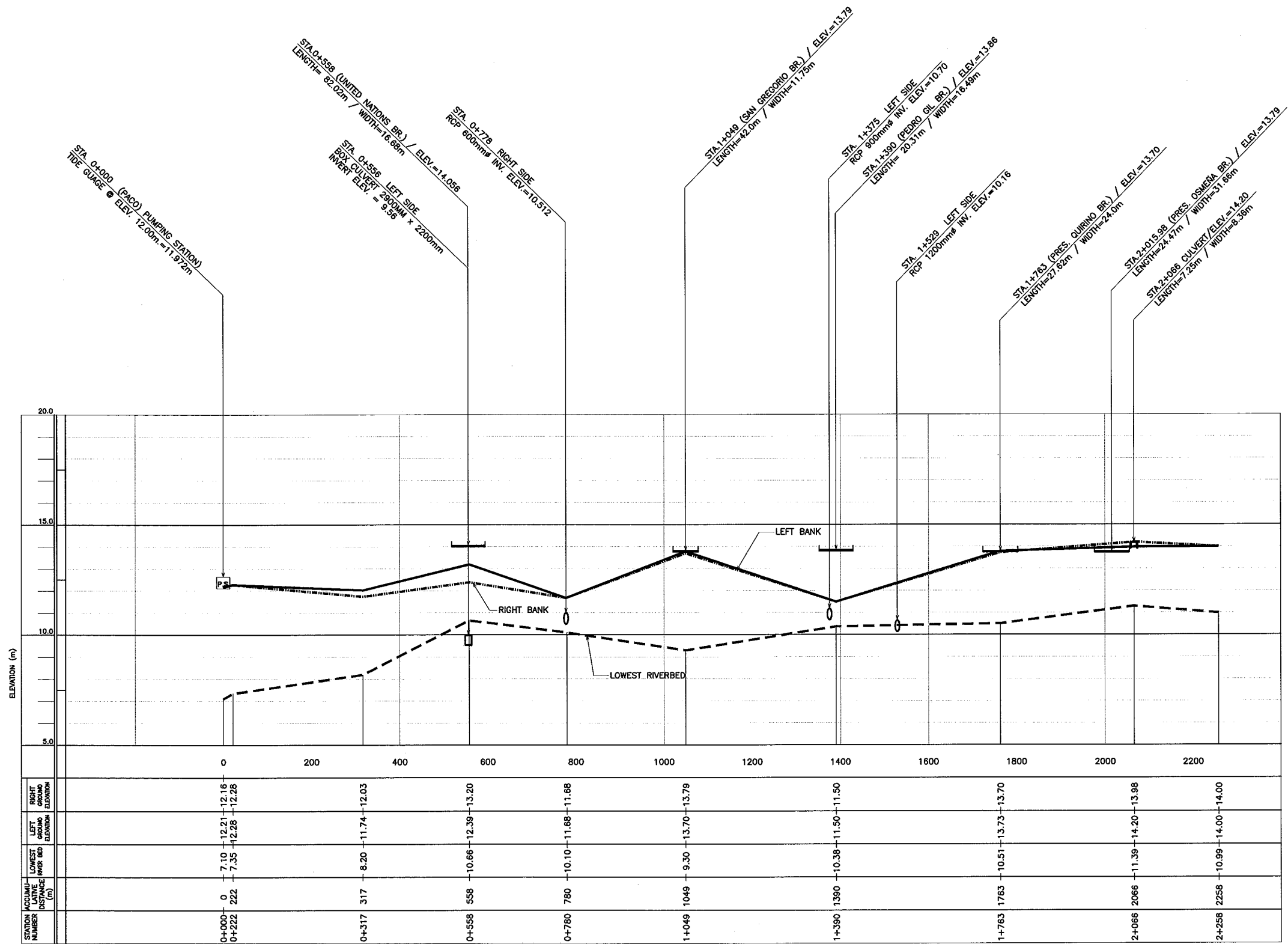
REFERENCE POINTS:

| STATION | EASTING | NORTHING |
|---------|------------|-------------|
| 0+000 | 498936.087 | 1613531.578 |
| 0+222 | 499053.831 | 1613341.368 |
| 0+317 | 499096.616 | 1613286.855 |
| 0+558 | 499053.419 | 1613070.061 |
| 0+780 | 499145.186 | 1612871.533 |
| 1+049 | 499217.803 | 1612629.847 |
| 1+390 | 499194.861 | 1612315.899 |
| 1+763 | 499412.747 | 1612042.361 |
| 2+066 | 499644.806 | 1612059.181 |
| 2+258 | 499757.996 | 1611963.399 |

1
ESTERO DE PACO (SE06)
TOPOGRAPHIC MAP
 SCALE : A

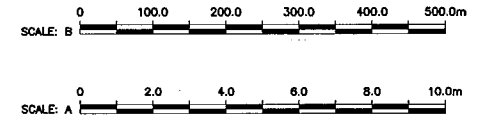


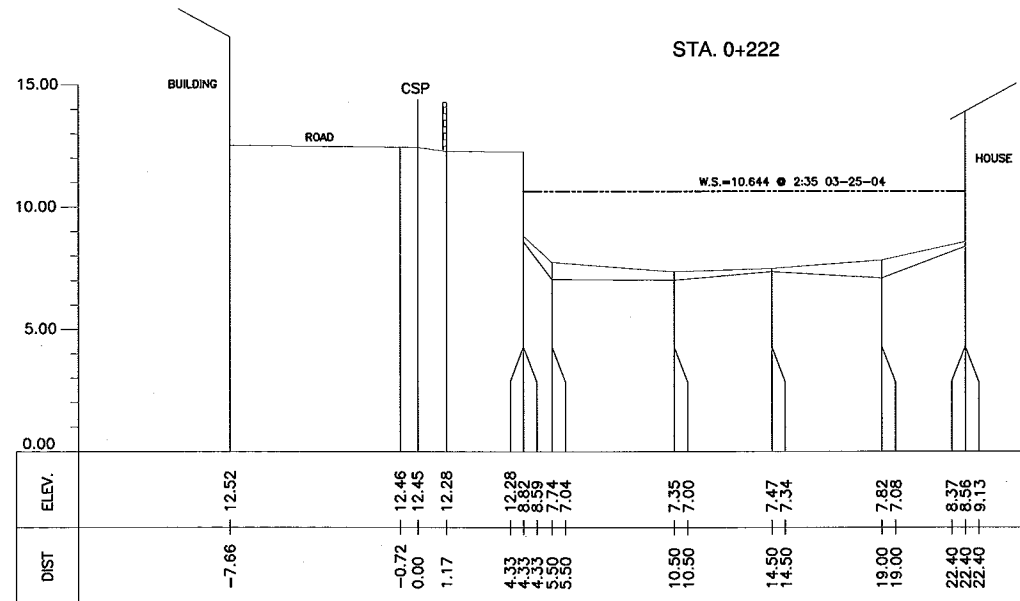
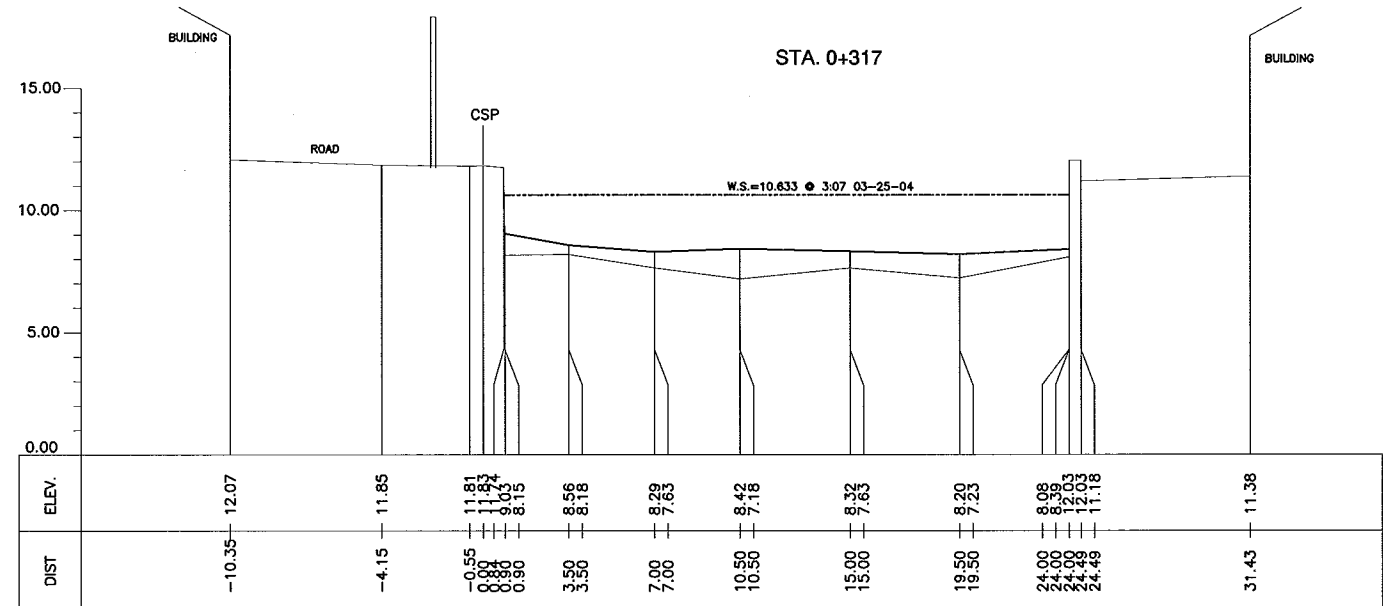
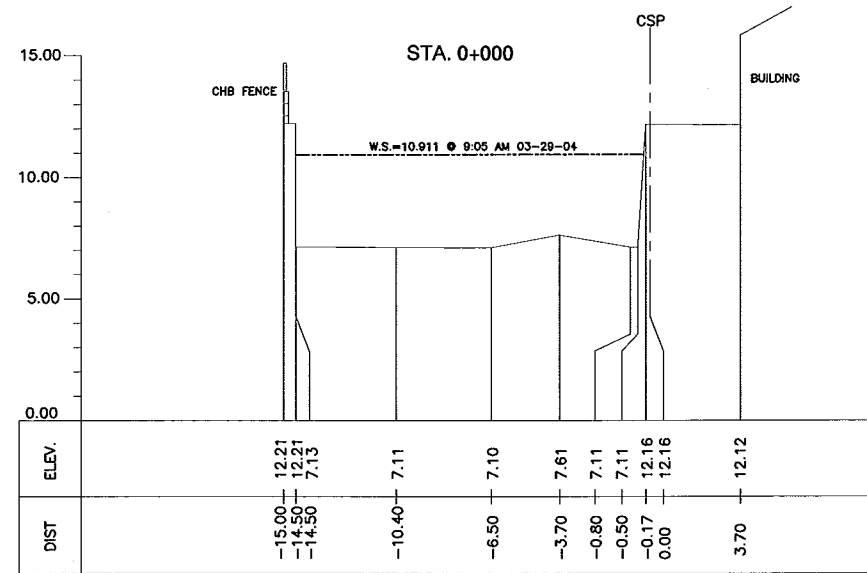
| | | | | |
|---|--|---|--|--|
| <p>CONSULTANTS</p> <p>PACIFIC CONSULTANTS INTERNATIONAL IN ASSOCIATION WITH NIKKEN CONSULTANTS, INC.</p> | <p>REPUBLIC OF THE PHILIPPINES</p> <p>JICA JAPAN INTERNATIONAL COOPERATION AGENCY FOR DEPARTMENT OF PUBLIC WORKS AND HIGHWAYS</p> | <p>PROJECT & LOCATION:</p> <p style="text-align: center;">THE STUDY ON DRAINAGE IMPROVEMENT IN THE CORE AREA OF METROPOLITAN MANILA</p> | <p>SHT. CONTENTS:</p> <p style="text-align: center;">CROSS-SECTION LOCATION ESTERO DE PACO (SE06) (STA. 0+000 ~ STA. 2+258)</p> | <p>SHT. NO</p> <div style="border: 1px solid black; border-radius: 50%; padding: 5px; width: 30px; margin: 0 auto;"> CL-14 01 01 </div> |
|---|--|---|--|--|



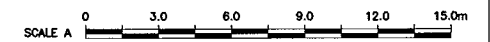
- LEGEND:
- : RIGHT BANK
 - - - : LEFT BANK
 - - - : LOWEST RIVERBED
 - : BOX CULVERT
 - ┌ : BRIDGE
 - : REINFORCE CONCRETE PIPE
 - PS : PUMPING STATION
 - : CULVERT

1 LONGITUDINAL PROFILE
 LP-14 VER. = SCALE : A / HOR. = SCALE : B

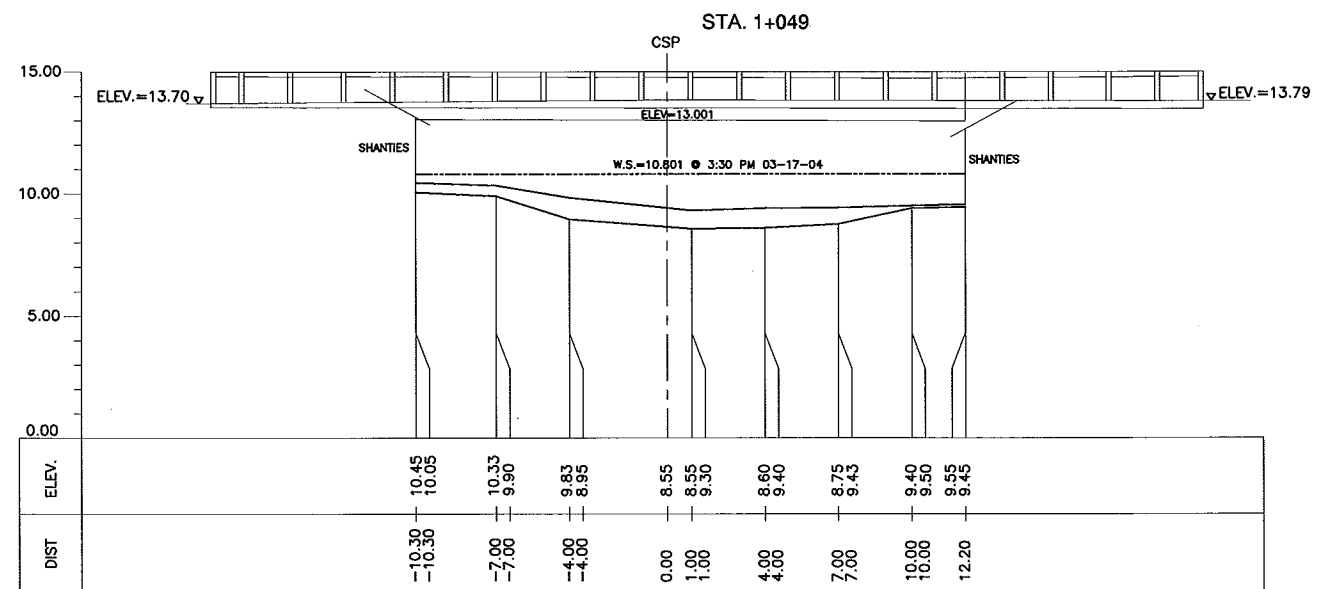
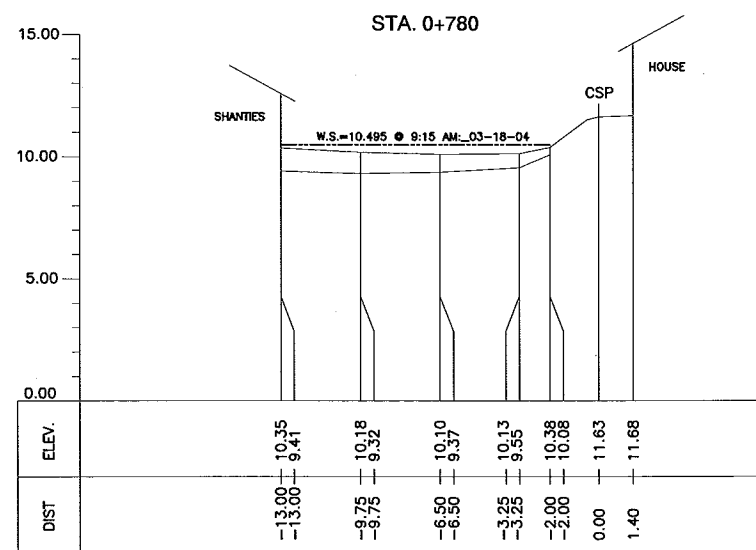
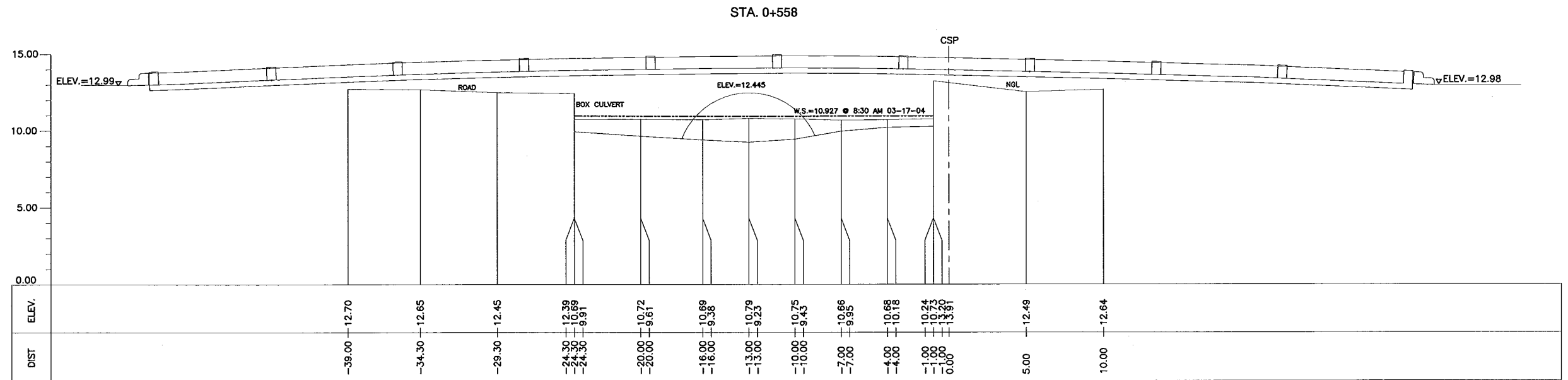




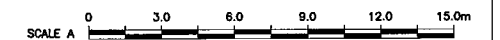
1 CROSS-SECTION
 CS-14 SCALE : A



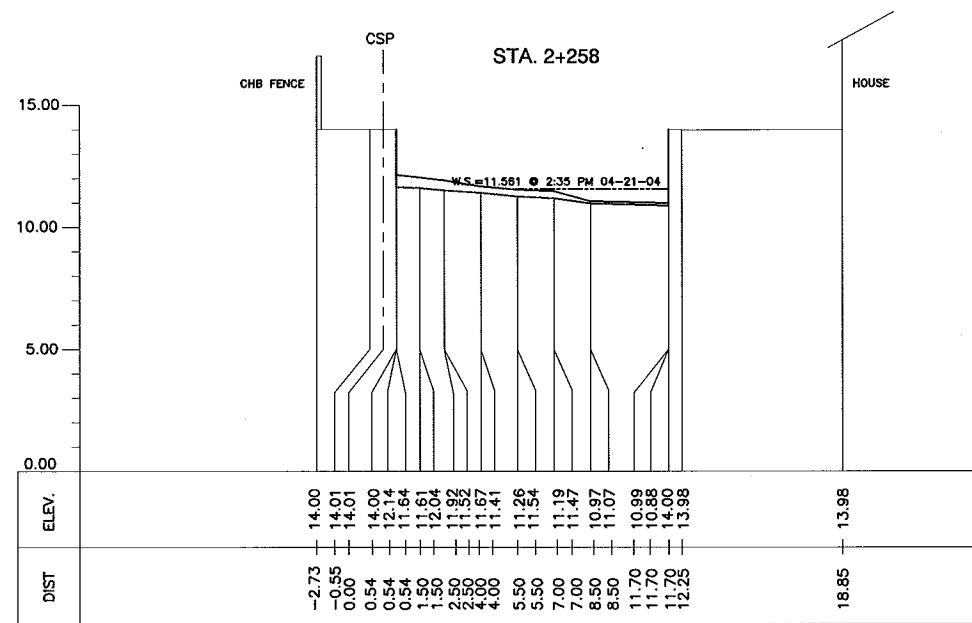
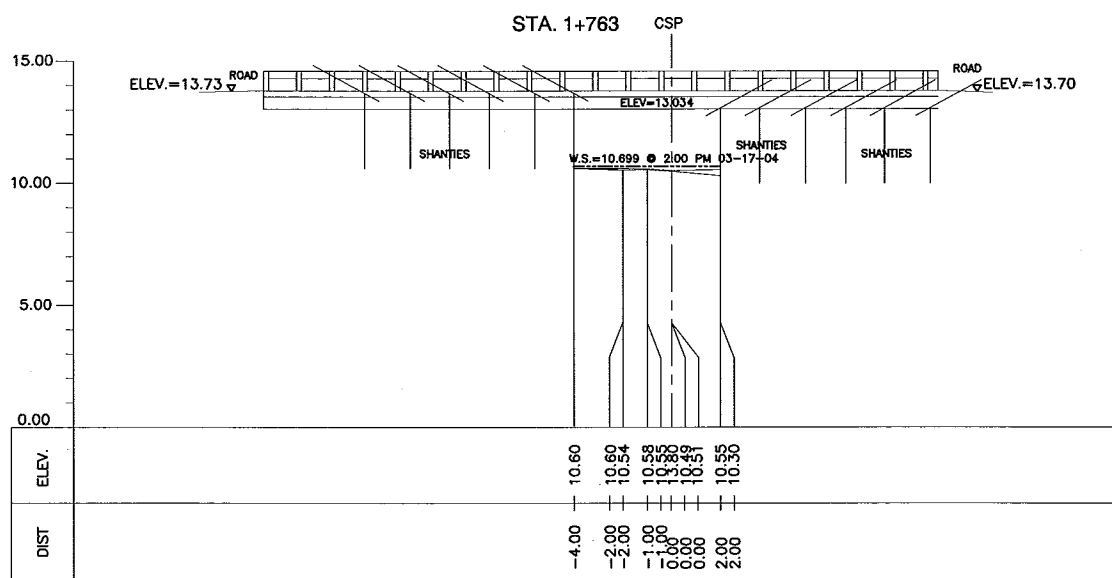
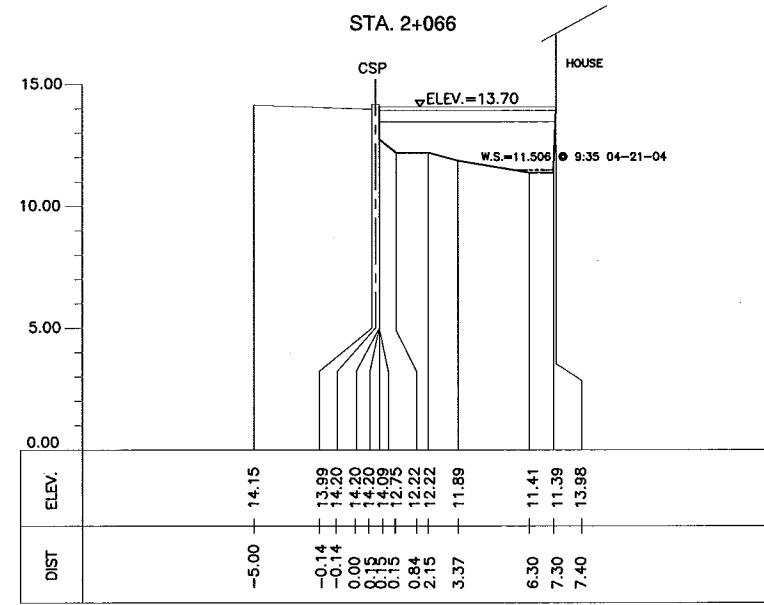
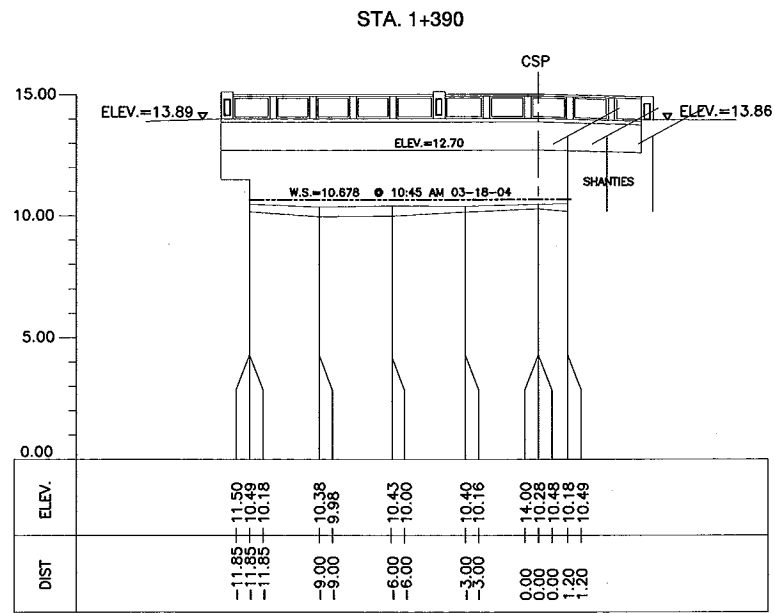
| | | | | | | |
|------------------------|--|--|--|--|---|------------------------------------|
| CONSULTANTS | | REPUBLIC OF THE PHILIPPINES | | PROJECT & LOCATION: THE STUDY ON DRAINAGE IMPROVEMENT IN THE CORE AREA OF METROPOLITAN MANILA | SHT. CONTENTS: CROSS-SECTION ESTERO DE PACO (SE06) (STA. 0+000~ STA. 0+317) | SHT. NO CS-14 01 03 |
|------------------------|--|--|--|--|---|------------------------------------|



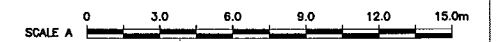
1 CROSS-SECTION
CS-14 SCALE : A



| | | | | | | |
|-------------|--|-----------------------------|--|--|---|---|
| CONSULTANTS | | REPUBLIC OF THE PHILIPPINES | | PROJECT & LOCATION: | SHT. CONTENTS: | SHT. NO |
| | | | | THE STUDY ON DRAINAGE IMPROVEMENT IN THE CORE AREA OF METROPOLITAN MANILA | CROSS-SECTION ESTERO DE PACO (SE06) (STA. 0+558 ~ STA. 1+409) | <div style="border: 1px solid black; border-radius: 50%; width: 30px; height: 30px; display: flex; align-items: center; justify-content: center;"> CS-14 02 03 </div> |
| | | | | | | |



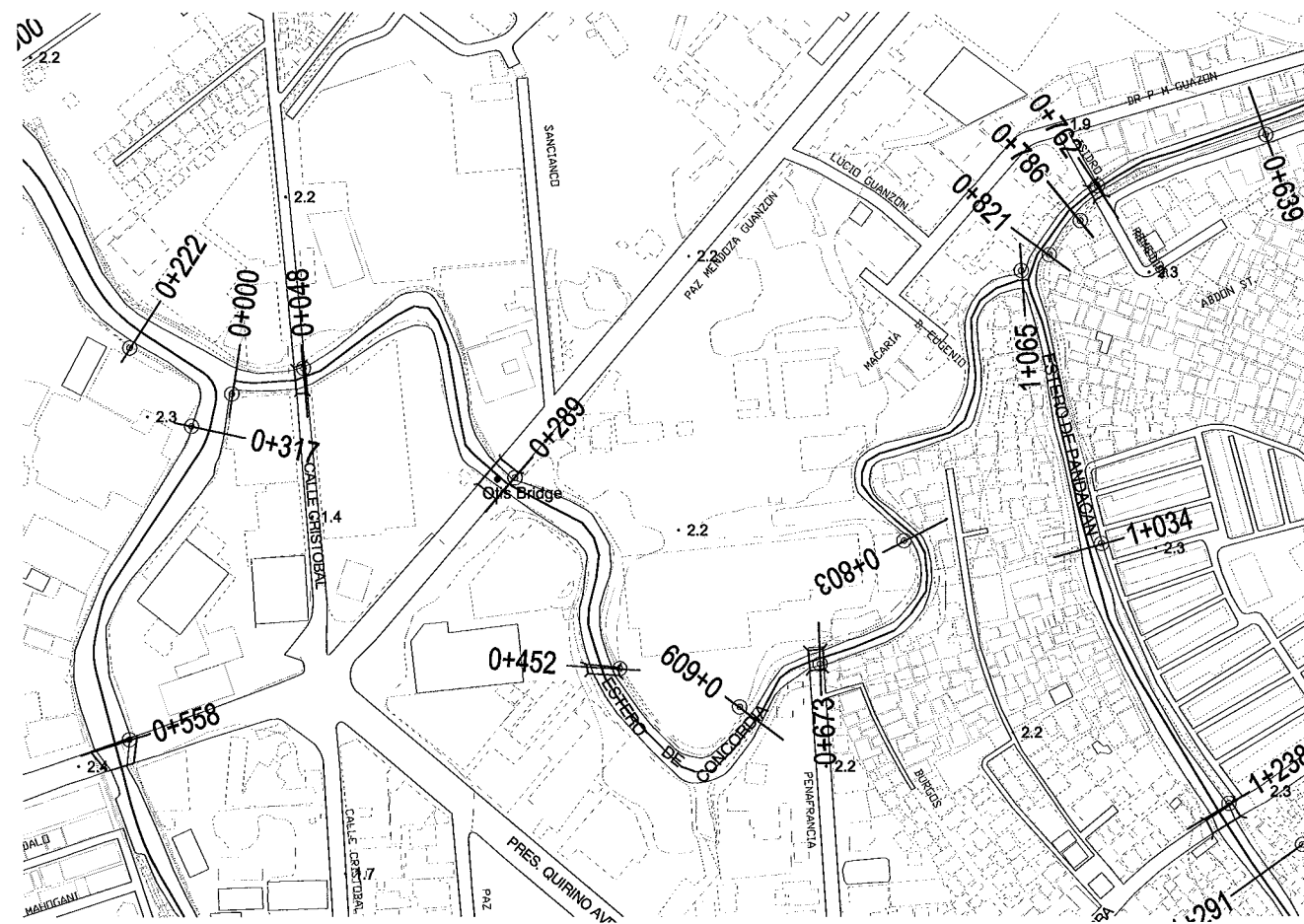
1 CROSS-SECTION
CS-14 SCALE : A



| | | | | | | |
|-----------------|--|---------------------------------|--|--|---|----------------------------------|
| CONSULTANTS | | REPUBLIC OF THE PHILIPPINES | | PROJECT & LOCATION: THE STUDY ON DRAINAGE IMPROVEMENT IN THE CORE AREA OF METROPOLITAN MANILA | SHT. CONTENTS: CROSS-SECTION ESTERO DE PACO (SE06) (STA. 1+390 - STA. 2+258) | SHT. NO CS-14 03 03 |
|-----------------|--|---------------------------------|--|--|---|----------------------------------|

ESTERO DE CONCORDIA

(SE07)



CROSS-SECTION LOCATION

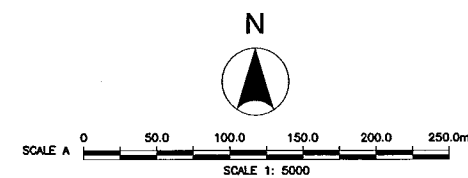
REFERENCE POINTS:

| STATION | EASTING | NORTHING |
|---------|------------|-------------|
| 0+000 | 499124.312 | 1613309.201 |
| 0+048 | 499173.774 | 1613326.949 |
| 0+289 | 499319.834 | 1613251.114 |
| 0+452 | 499392.162 | 1613119.080 |
| 0+609 | 499475.393 | 1613092.346 |
| 0+673 | 499530.971 | 1613122.016 |
| 0+803 | 499589.038 | 1613207.223 |
| 1+065 | 499670.112 | 1613394.148 |

1
CL-15

**ESTERO DE CONCORDIA (SE07)
TOPOGRAPHIC MAP**

SCALE : A



CONSULTANTS

PACIFIC CONSULTANTS INTERNATIONAL
IN ASSOCIATION WITH
 NIKKEN CONSULTANTS, INC.

REPUBLIC OF THE PHILIPPINES

JAPAN INTERNATIONAL COOPERATION AGENCY
FOR
 DEPARTMENT OF PUBLIC WORKS AND HIGHWAYS
 METROPOLITAN MANILA DEVELOPMENT
AUTHORITY

PROJECT & LOCATION:

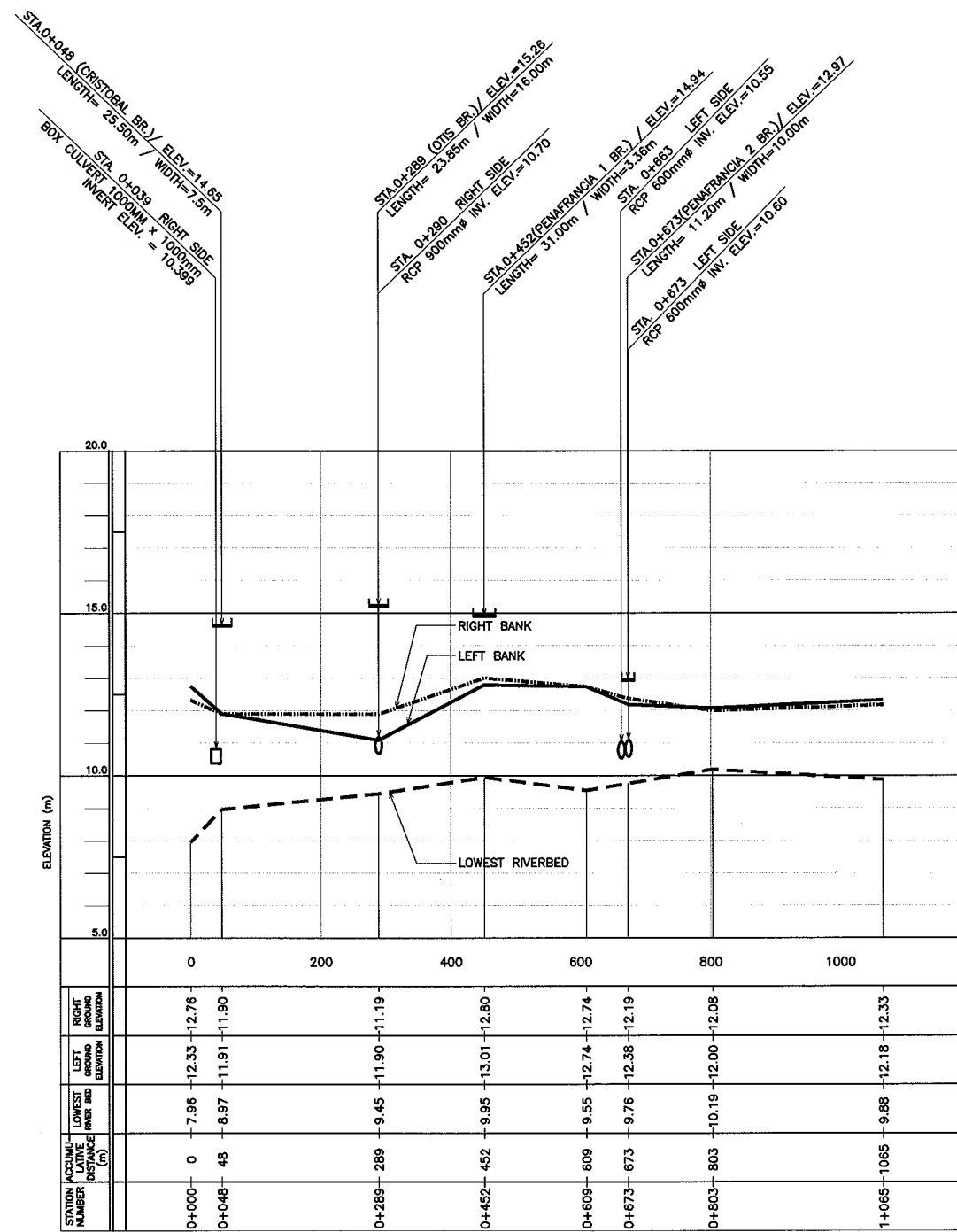
**THE STUDY ON DRAINAGE IMPROVEMENT
IN THE CORE AREA OF METROPOLITAN MANILA**

SHT. CONTENTS:

CROSS-SECTION LOCATION
ESTERO DE CONCORDIA (SE07)
(STA. 0+000 ~ STA. 1+065)

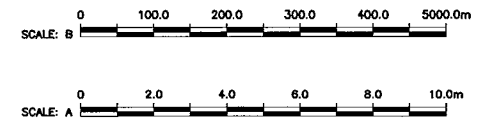
SHT. NO

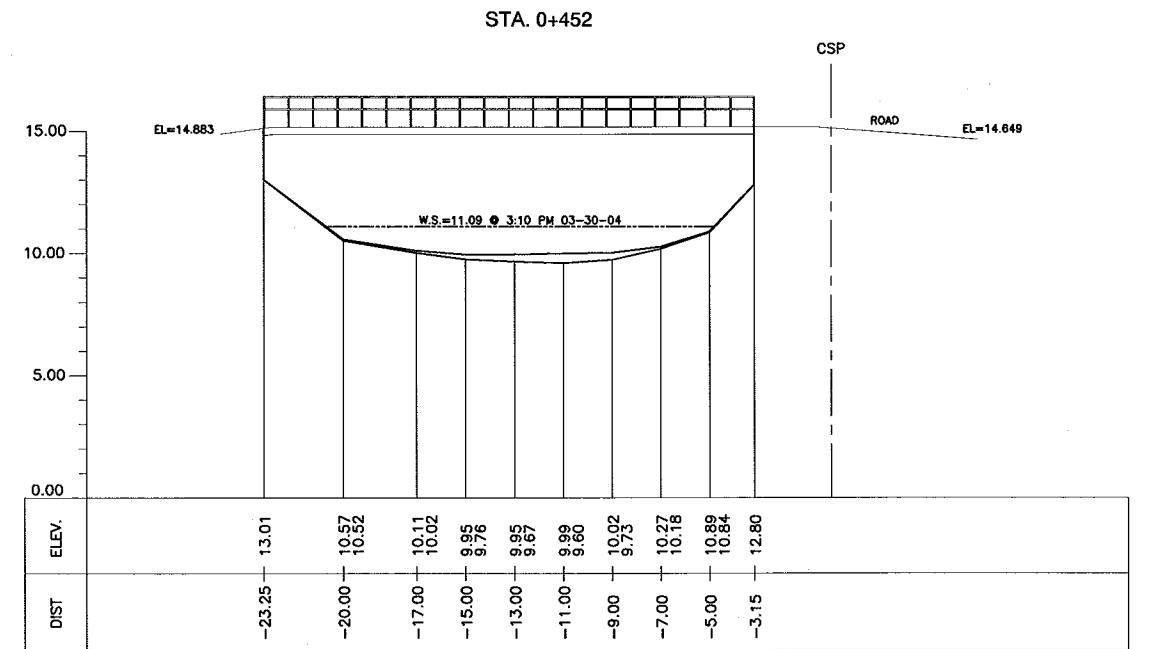
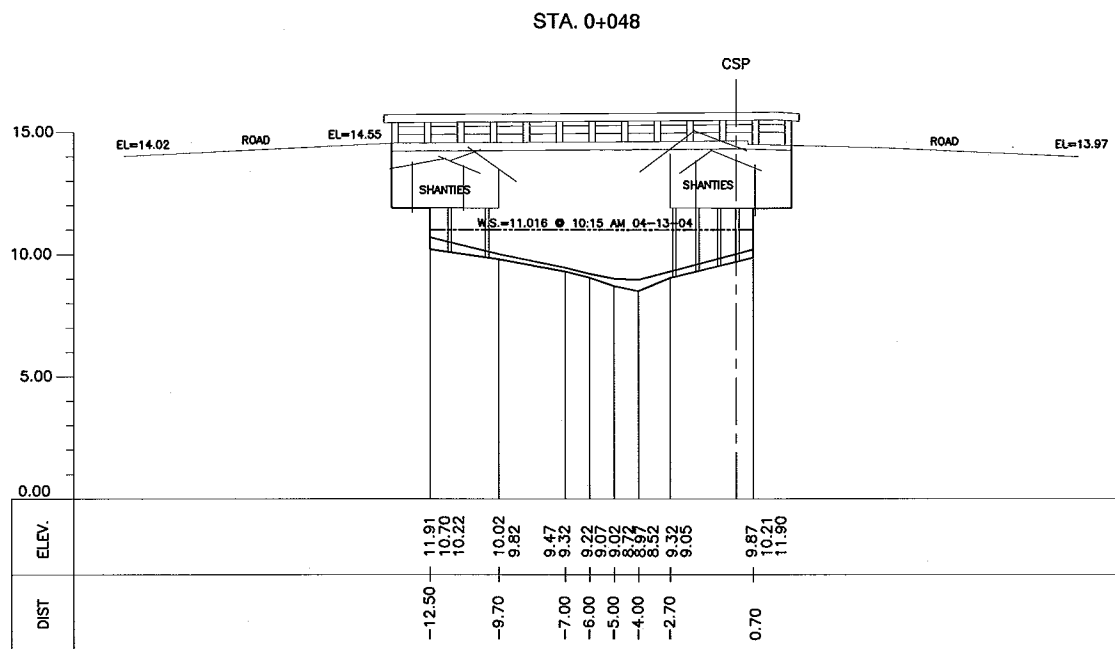
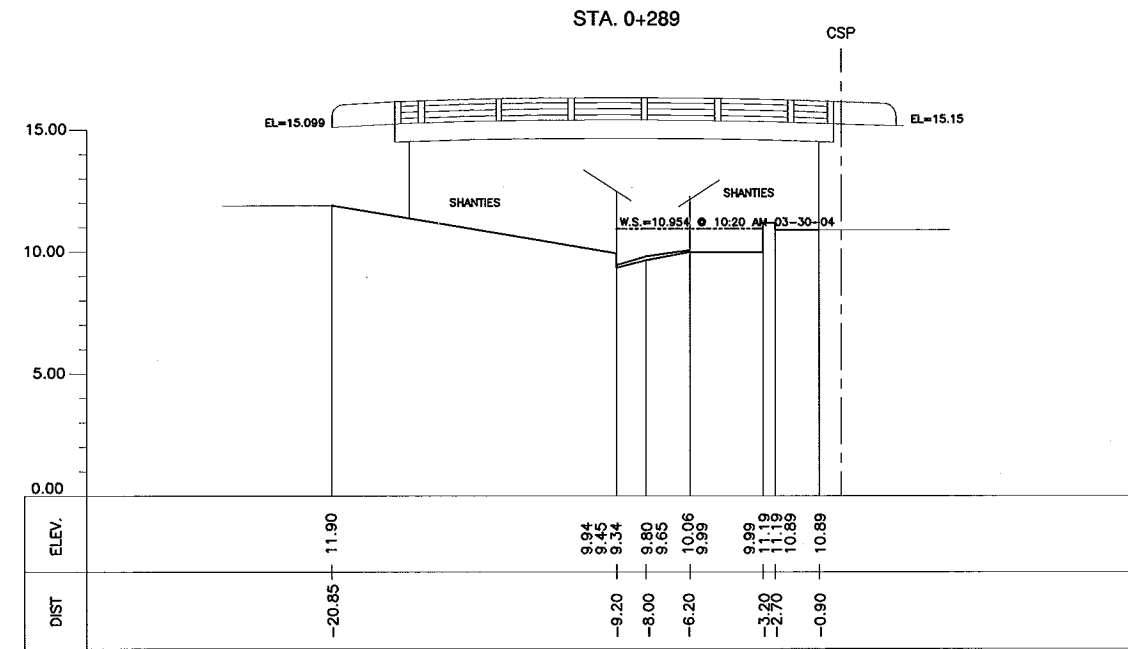
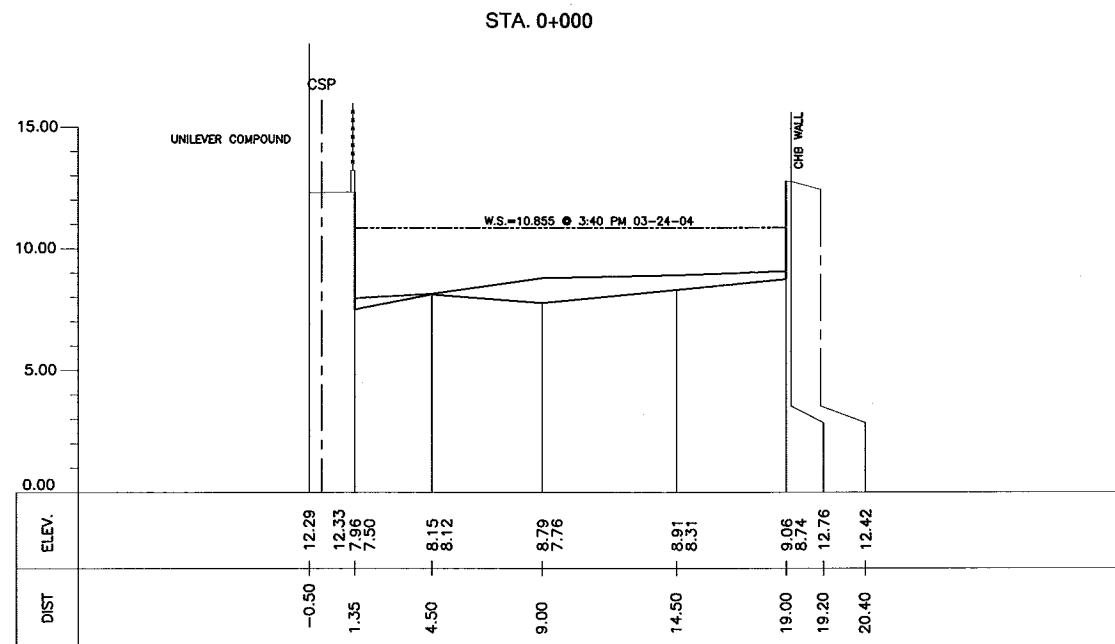
CL-15
01 01



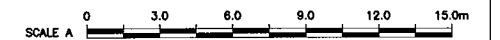
- LEGEND:
- : RIGHT BANK
 - : LEFT BANK
 - - - -: LOWEST RIVERBED
 - : BOX CULVERT
 - ┌: BRIDGE
 - : REINFORCE CONCRETE PIPE

1 LONGITUDINAL PROFILE
 LP-15 VER. = SCALE : A / HOR. = SCALE : B

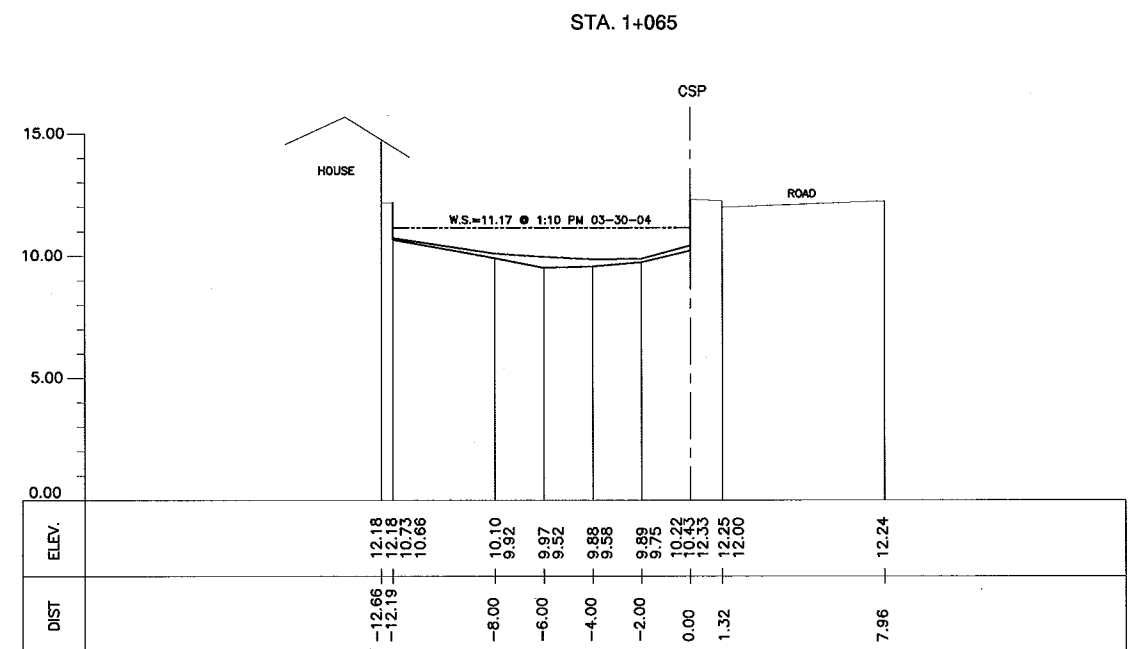
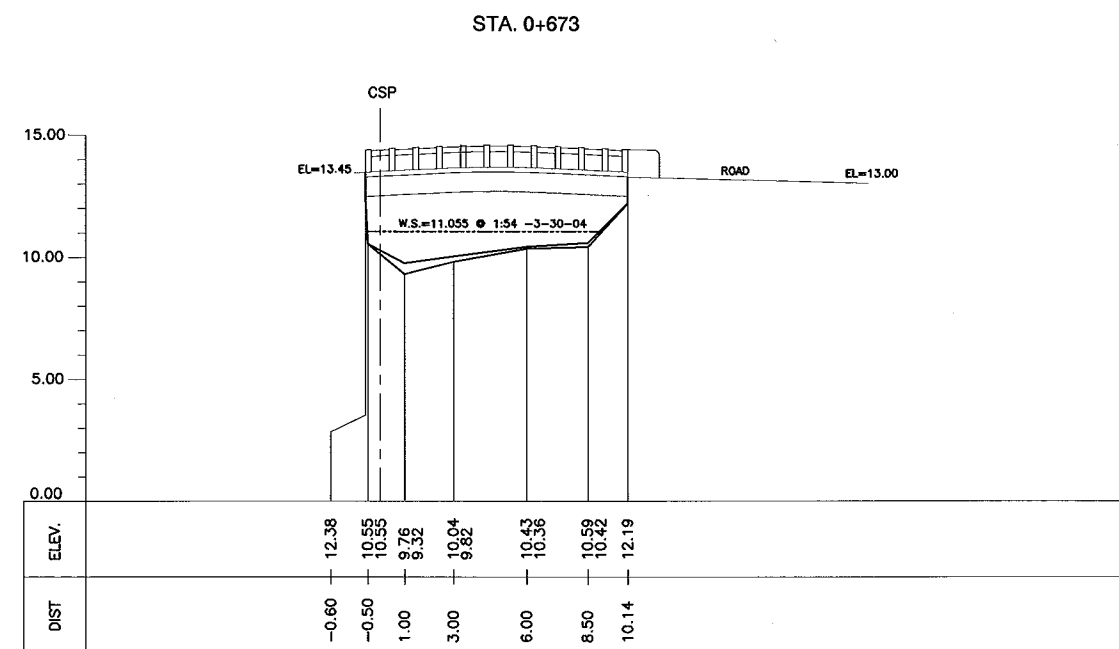
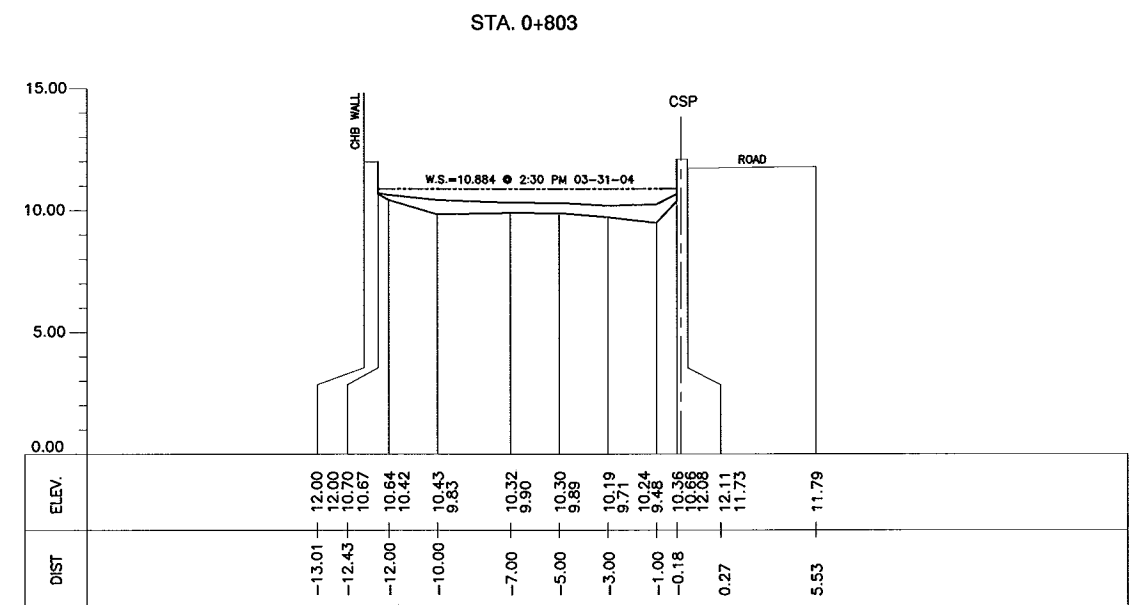
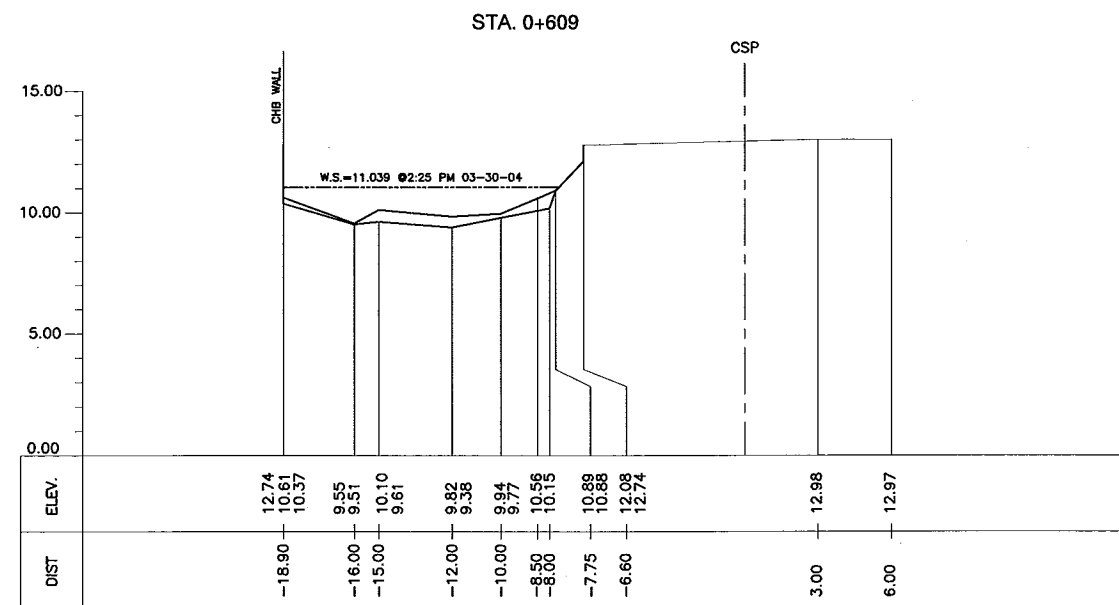




1 CROSS-SECTION
CS-15 SCALE : A



| | | | | | | |
|--------------------|--|------------------------------------|--|---|--|---------------------------------------|
| <p>CONSULTANTS</p> | | <p>REPUBLIC OF THE PHILIPPINES</p> | | <p>PROJECT & LOCATION:</p> <p>THE STUDY ON DRAINAGE IMPROVEMENT IN THE CORE AREA OF METROPOLITAN MANILA</p> | <p>SHT. CONTENTS:</p> <p>CROSS-SECTION ESTERO DE CONCORDIA (SE07) (STA. 0+000- STA. 0+452)</p> | <p>SHT. NO</p> <p>CS-15 01 02</p> |
|--------------------|--|------------------------------------|--|---|--|---------------------------------------|



1 CROSS-SECTION
CS-15 SCALE : A

