

Annex-S:

Collected Material in Follow-up Study

収集資料一覧表

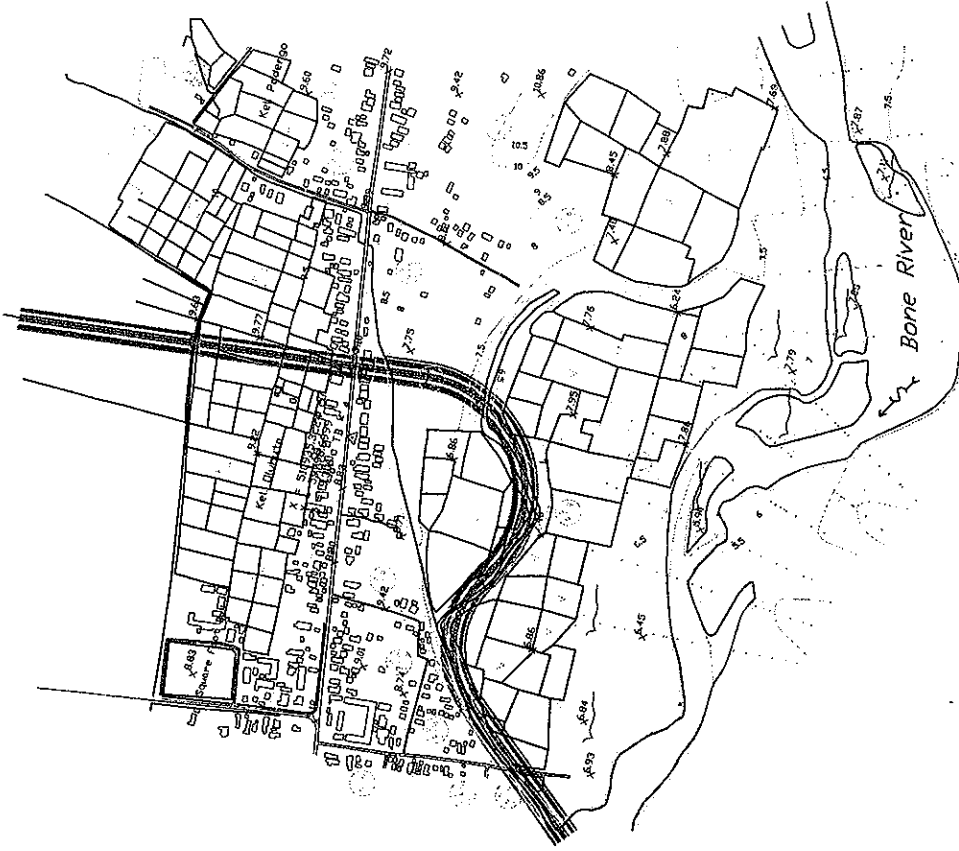
番号	資料の名称	形態	部数	収集先名称又は発行機関	発行年
1	Inspection Report on Existing River Structures in Lower Bolango River Gorontalo Province	コピー クリップ留	1	州PU 開発調査チーム	Aug. 2002
2	Kab. Gorontalo行政区域図	A3コピー 切り貼り	1	BAPEDA Kab.	1995-1996
3	Kota. Gorontalo排水計画M/P Main Report	仮綴	1	BAPEDA Kota 及び Dinas PU Kota	2002
4	Kota. Gorontalo排水計画M/P Design Note	仮綴	1	BAPEDA Kota 及び Dinas PU Kota	2002
5	Kota. Gorontalo排水計画M/P Drawings	仮綴	1	BAPEDA Kota	2002
6	Master Plan Study on Integrated Development and Management of Walaanae-Cenranae River Basin	ビニールクロ ス製本	1	森林省中田専門家	Dec.2003
7	Gambar Rencana Pemeliharaan Alur Sungai Bionga 2004年度ビヨング川改修計画図	仮綴	1	Dinas PU Kab.	2004
8	Gambar Rencana Pemeliharaan Alur Sungai Bulota 2004年度ブルタ川改修計画図	仮綴	1	Dinas PU Kab.	2004
9	Gambar Proyek Perbaikan Sungai Tamalate 2002年度タマラテ川改修工事竣工図	仮綴	1	Dinas PU Kota	2002
10	Gambar Proyek Perbaikan Sungai Tamalate 2003年度タマラテ川改修工事竣工図	仮製本	1	Dinas PU Kota	2003
11	Gambar Proyek Perbaikan Sungai Bolango 2003年度ボランゴ川改修工事竣工図	仮製本	1	Dinas PU Kota	2003
12	Survey Audit Infrastructure dan Sosial Ekonomi Gorontalo市内公共施設図	仮製本	1	BAPEDA Kota	2002
13	調査地域内1:50,000地形図	印刷物	1	Peta Rupabumi Indonesia	1991
14	Daftar Harga 建設物価	仮綴	1	Dinas PU Province	Apr.2003
15	Daftar Harga 建設物価	仮綴	1	Dinas PU Province	Mar.2004
16	Ancar-ancar Satuan Harga Barang dan Jasa 2003年度版ゴロンタロ州建設資材及び工事費物価	仮製本	1	BAPEDA Province	2003

Annex-T:

Alignment Alternative of Tamalate Floodway-mouth



Alternatives-TF1

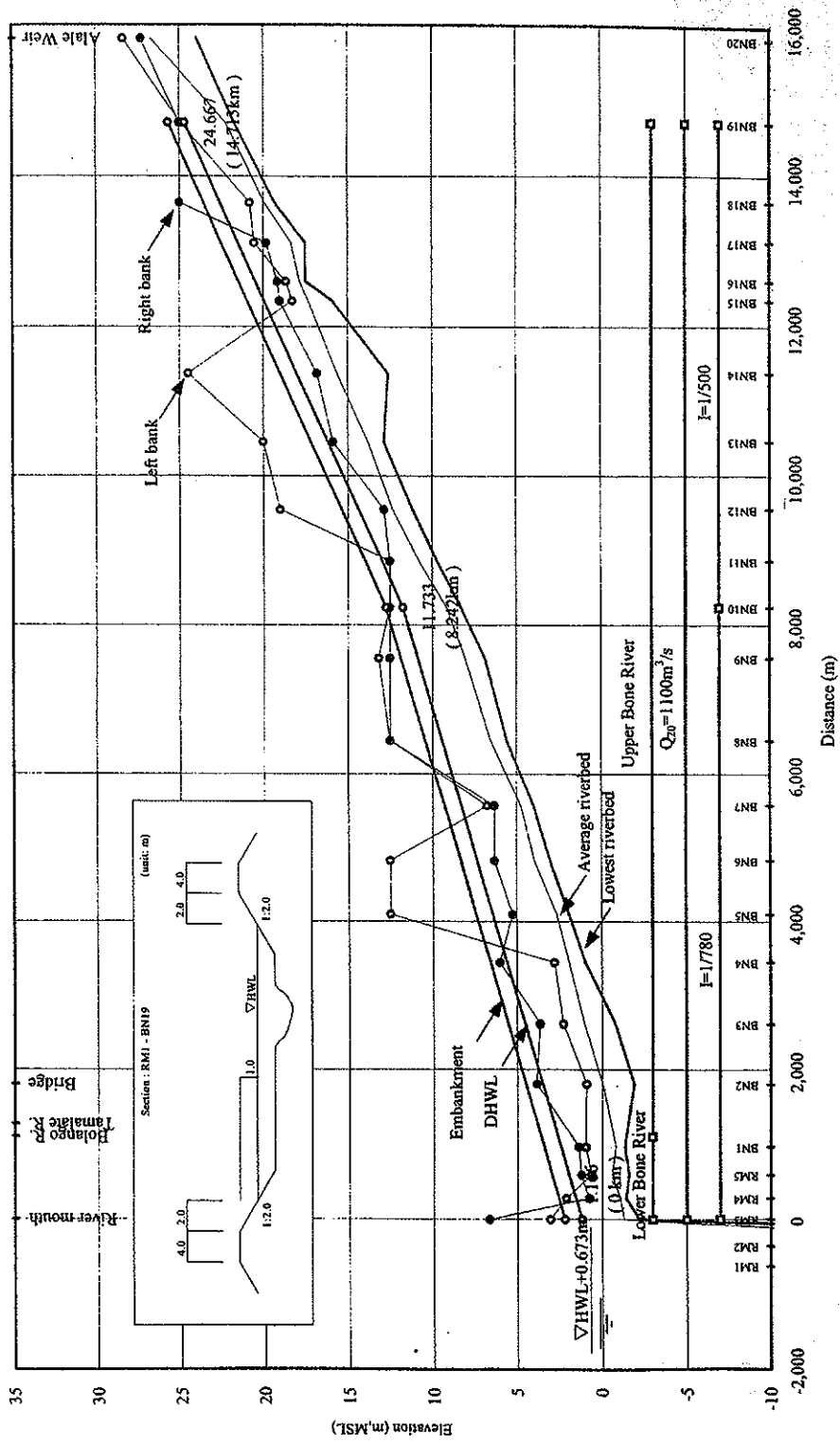


Alternatives-TF2

Alignment Alternatives of Tamalate Floodway-mouth

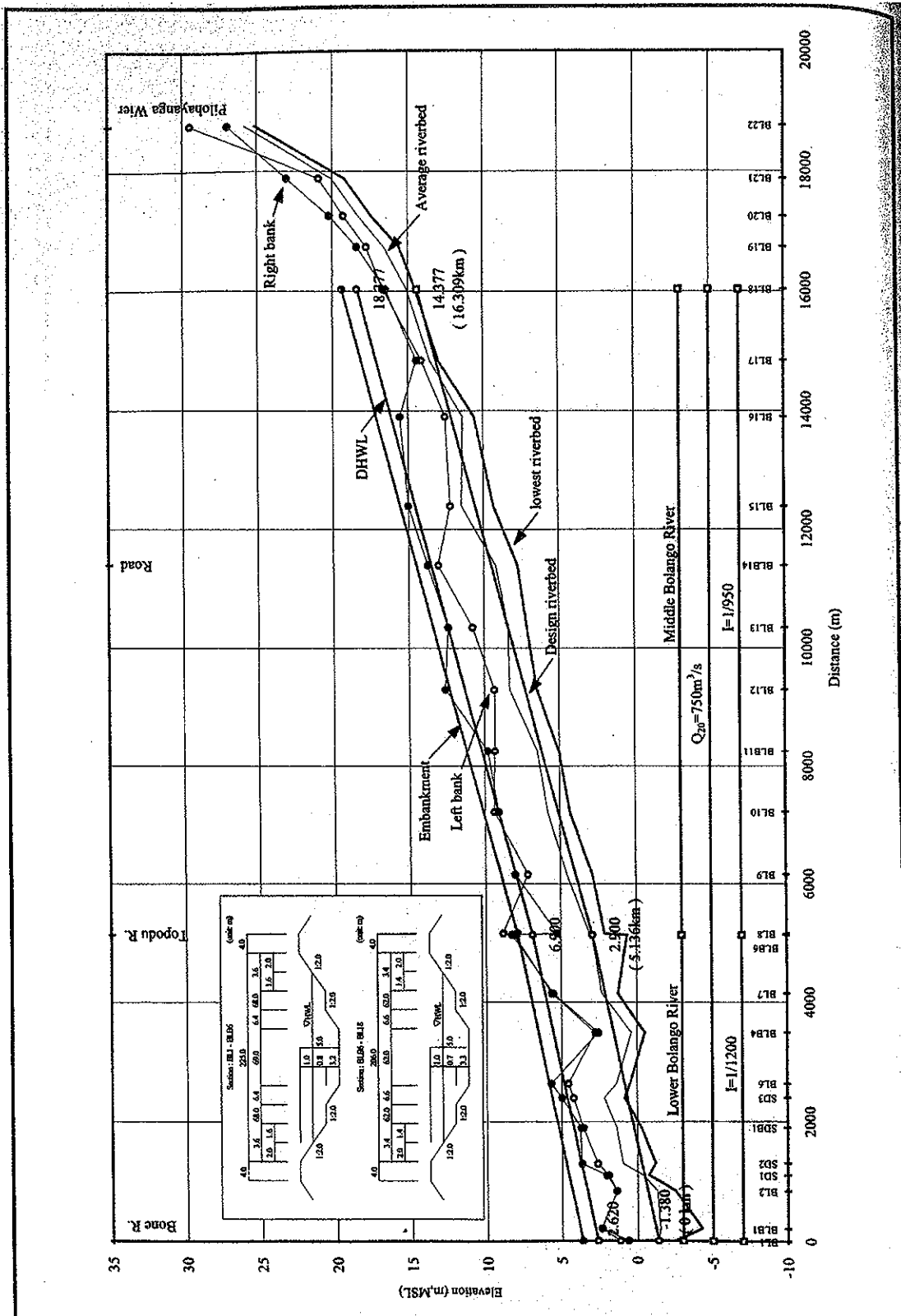
Annex-U:

Longitudinal Profile of Bone, Bolango and Tamalate
Rivers



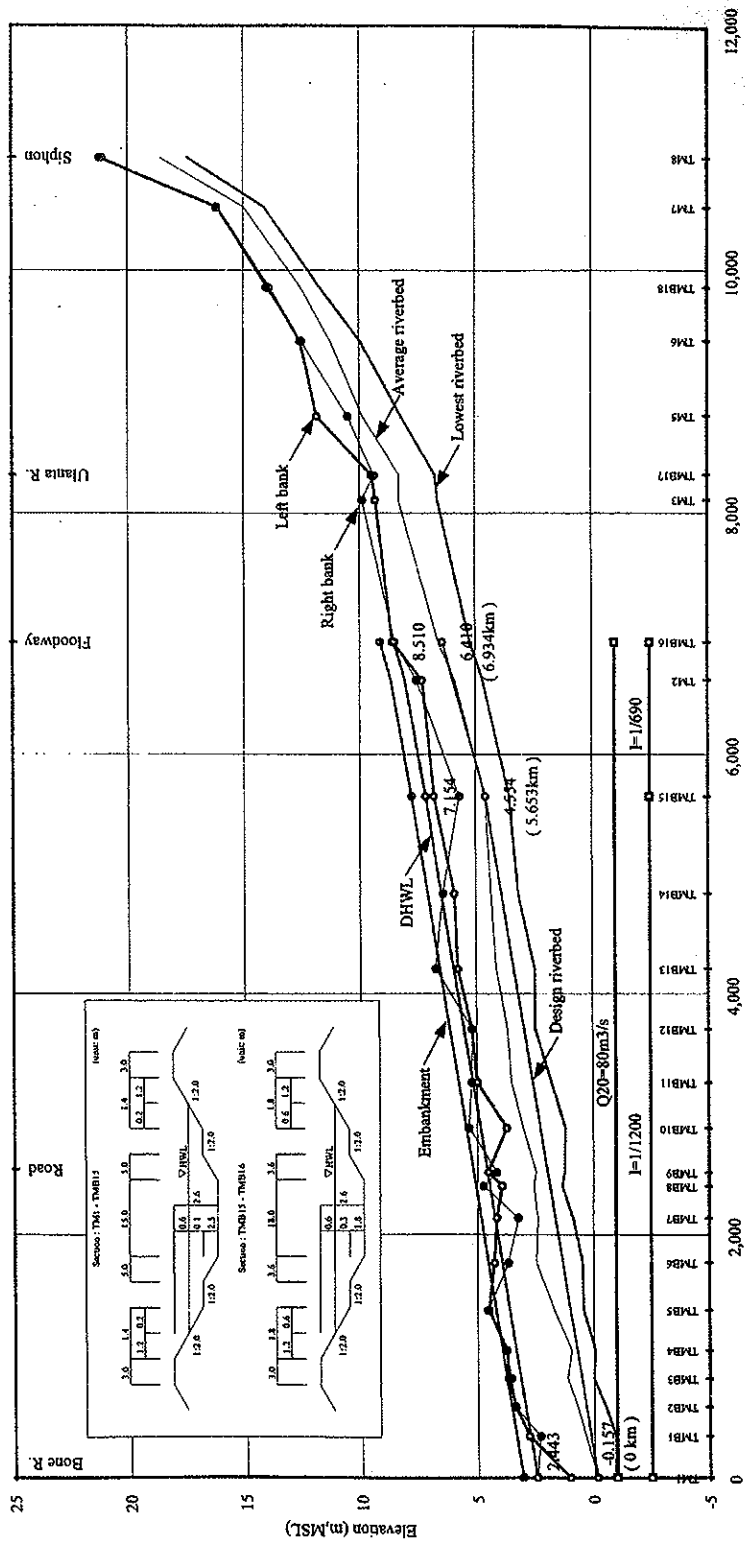
The Study on Flood Control
and Water Management
in Limboto-Bolango-Bone Basin
in the Republic of Indonesia
Japan International Cooperation Agency

Figure 4.2.11
DESIGN LONGITUDINAL PROFILE
(BONE RIVER)



The Study on Flood Control
and Water Management
in Limboto-Bolango-Bone Basin
in the Republic of Indonesia
Japan International Cooperation Agency

Figure 4.2.12
**DESIGN LONGITUDINAL PROFILE
(BOLANGO RIVER)**

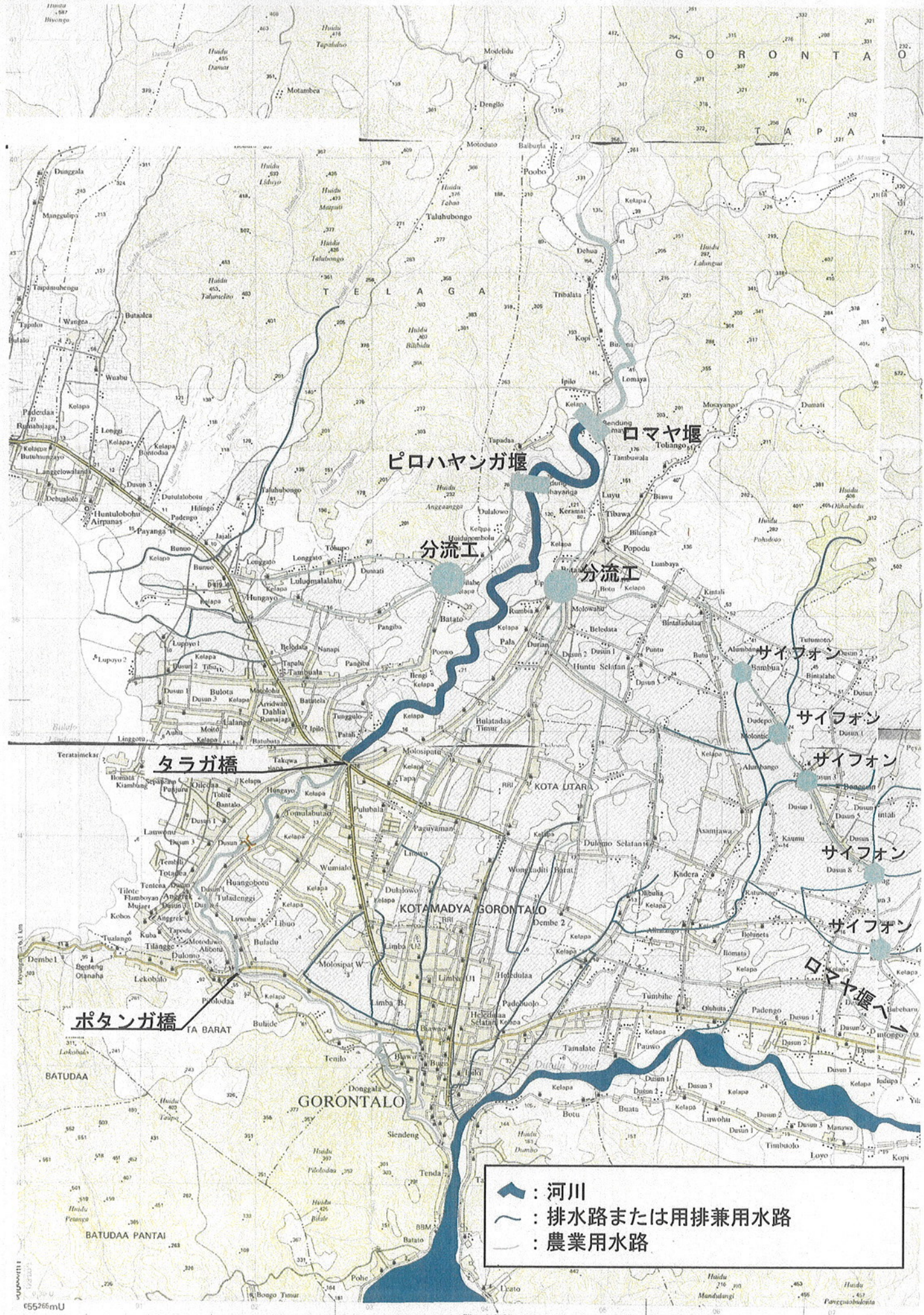


The Study on Flood Control
and Water Management
in Limboto-Bolango-Bone Basin
in the Republic of Indonesia
Japan International Cooperation Agency

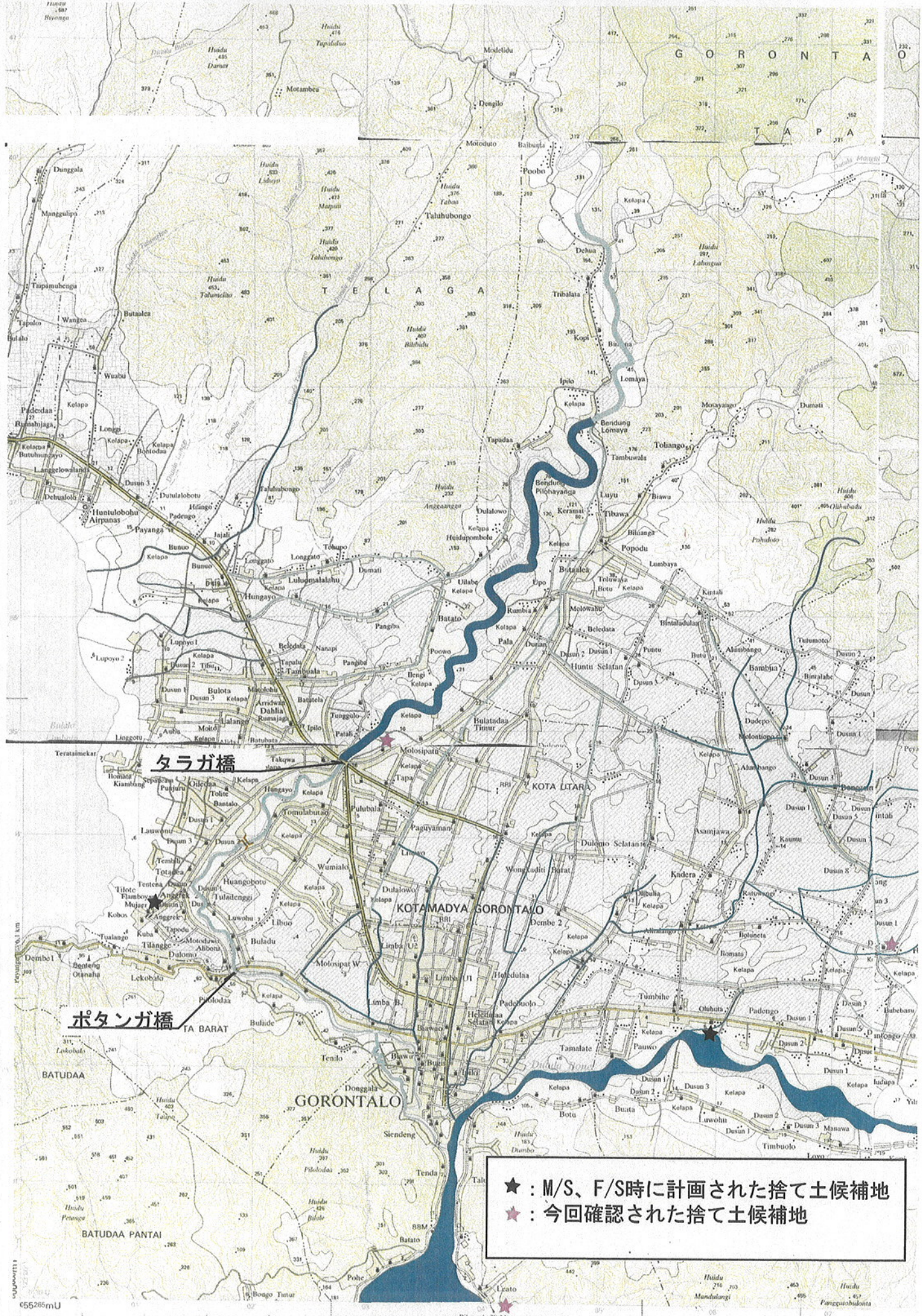
Figure 4.2.13
DESIGN LONGITUDINAL PROFILE
(LOWER TAMALATE RIVER
WITH FLOODWAY)

Annex-V:

Others



ゴロンタロの主な用排水系統図



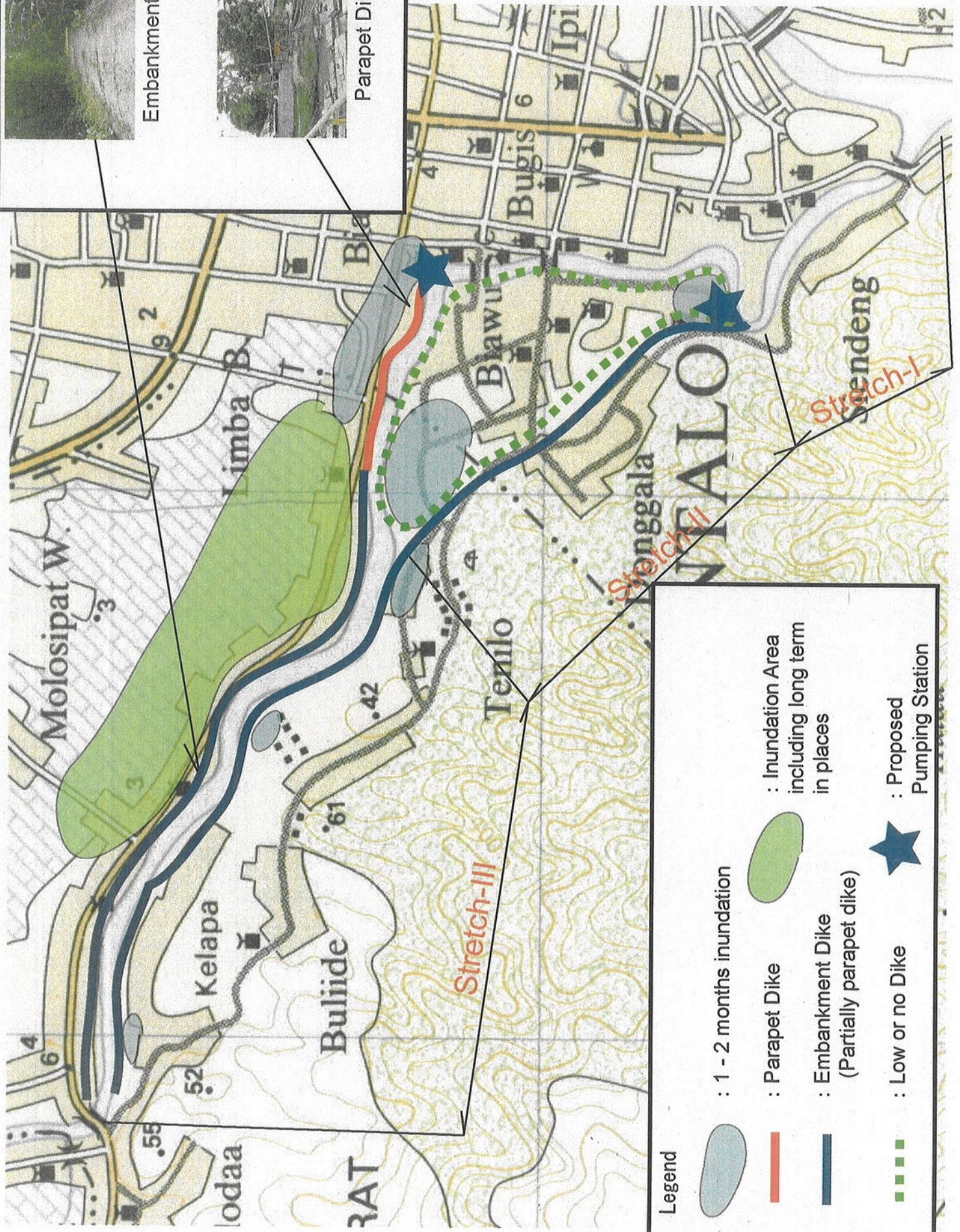
★ : M/S、F/S時に計画された捨て土候補地
 ☆ : 今回確認された捨て土候補地

残土処理計画



- : 洪水の起こっていない地域
- : 河川、水路から頻繁に氾濫する地域
- : 大きな洪水時に氾濫する地域

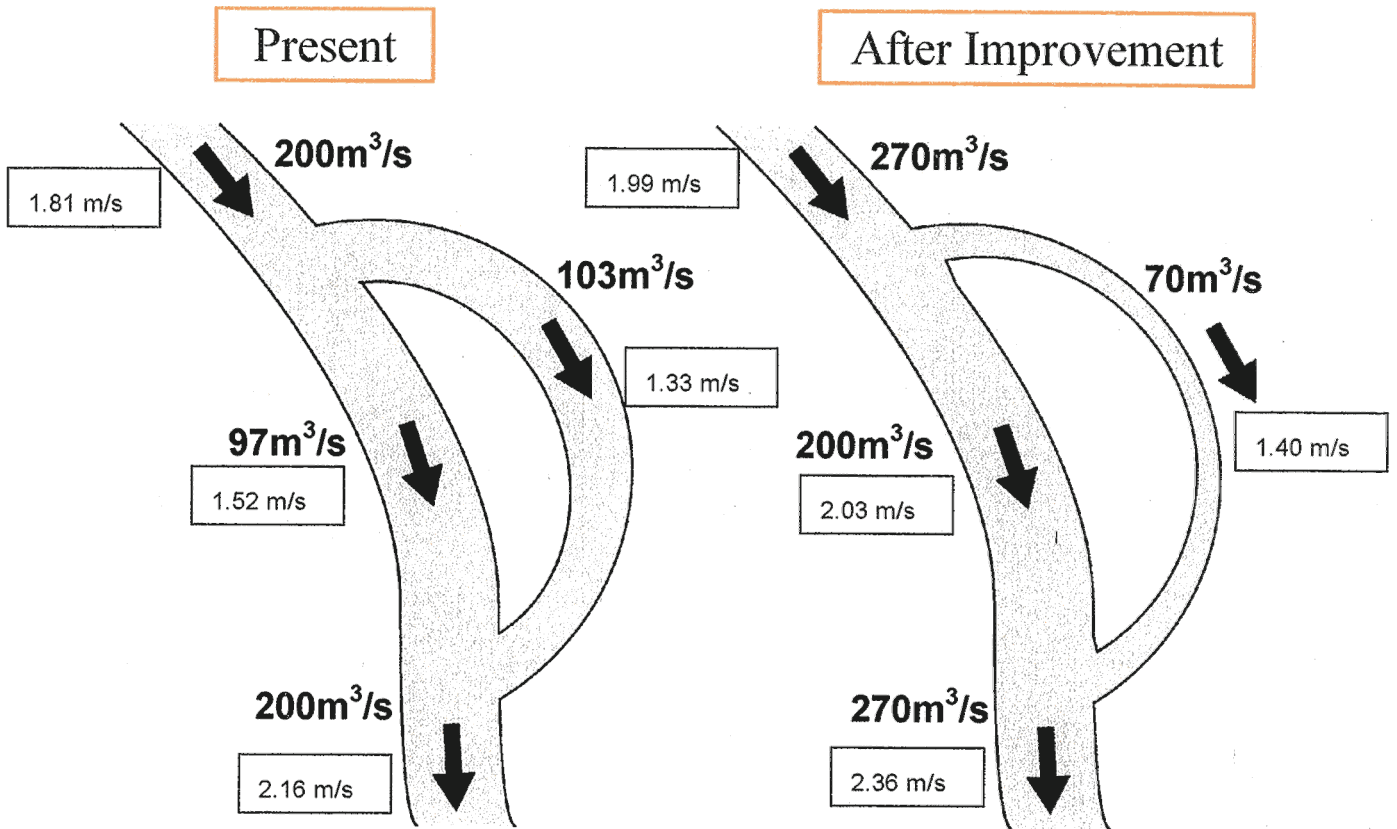
タマラテ川上流域の氾濫



Legend

- : 1 - 2 months inundation
- : Parapet Dike
- : Embankment Dike (Partially parapet dike)
- : Low or no Dike
- : Inundation Area including long term in places
- : Proposed Pumping Station

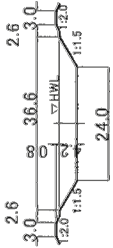
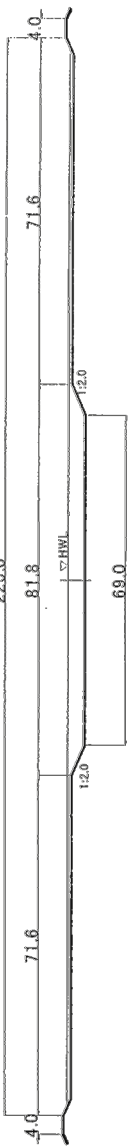
長期間湛水する地域と排水機場設置を予定していた位置



現況断面に $200\text{m}^3/\text{s}$ の流量を流下させた時のボランゴ川 Stretch-II 区間左派川と右派川の流量配分と改修後の断面に改修計画対象流量 $270\text{m}^3/\text{s}$ を流下させた時の流量配分 (不等流計算結果による)

(現況と計画断面の分合流部における水位は異なっている)

Table Comparative Table for Lower Bolango River Improvement Works

	Alternative-A	Alternative-B
Scale of Flood Control	5-year	20-year
Design Discharge	270m ³ /s	750m ³ /s
Standard Cross Section		
Work Volume Index		(quoted from M/P Study Report)
Excavation	Approx. 300,000 m ³	Approx. 800,000m ³
Embankment/Backfill	Approx. 200,000 m ³	Approx. 200,000m ³
Direct Work Cost	Approx. 100 billion Rupiah (equivalent to 1 billion yen)	Approx. 250 billion Rupiah (equivalent to 2.5 billion yen)
No. of House Relocation	Approx. 70 units	Over 500 units
Land Acquisition	Approx. 80,000m ²	Approx. 1,000,000m ²
Project Strategy	applicable to Japanese Grant Aid Project	recommended to apply other sources