

N

Scale 1 : 150 000

LEGEND

- Municipality Boundary
- ▭ Parroquia Boundary
- Road Network
- Tunnel
- River
- Stream

Building Damage Ratio in %

0 - 1.01
1.01 - 5.1
5.1 - 9.5
9.5 - 15.15
15.15 - 23.27

Source: JICA Study Team.
Elaboration Date: 2003

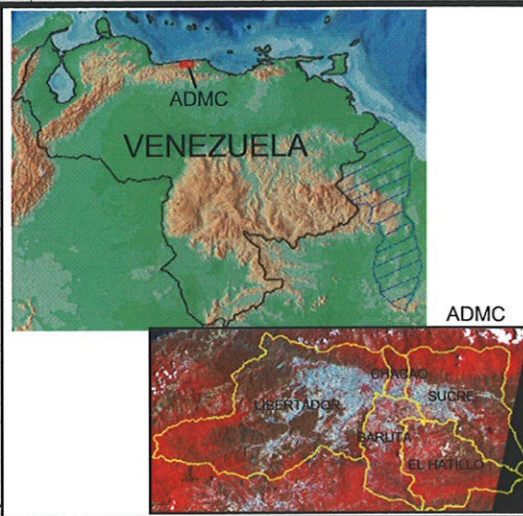
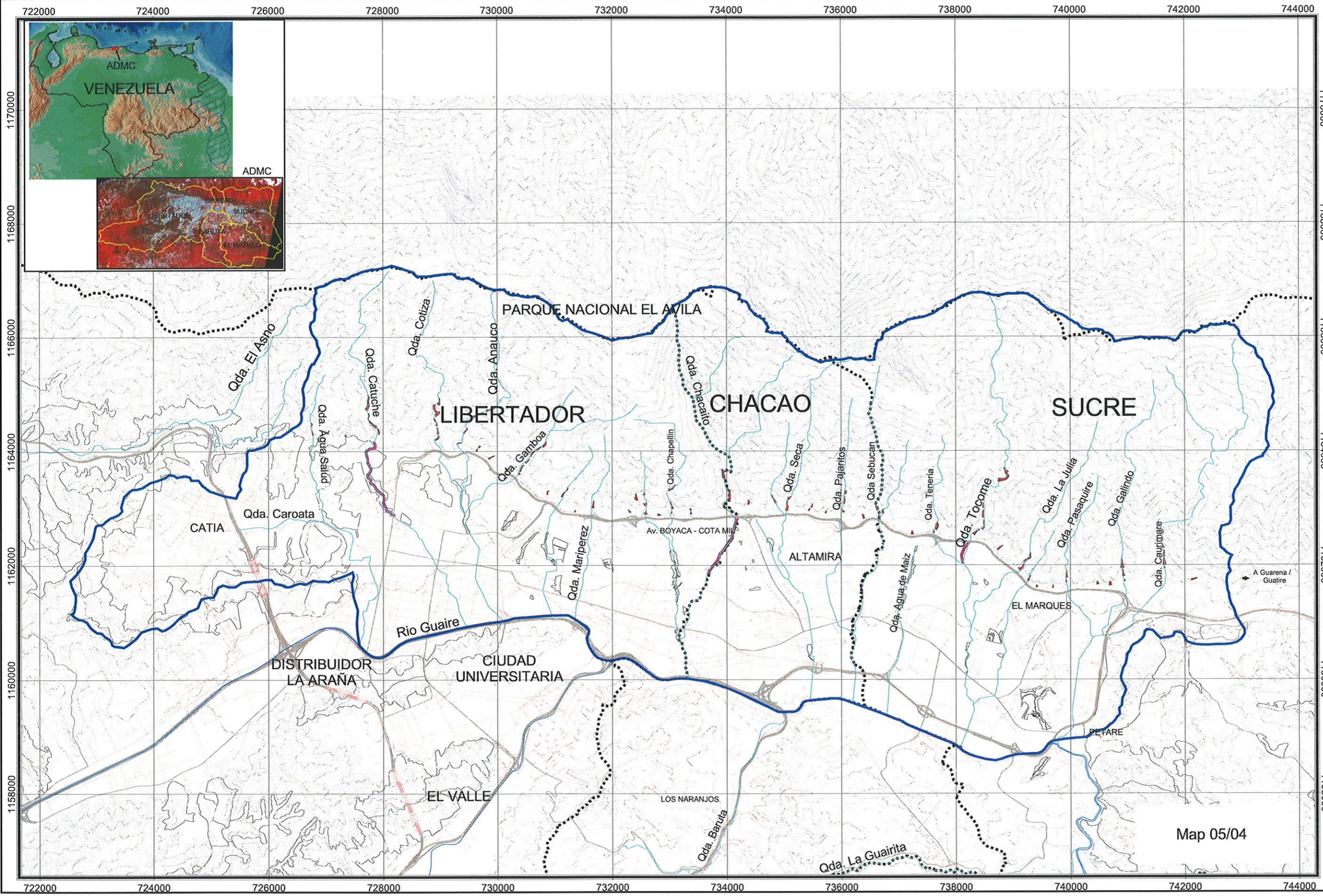
MAP PROJECTION PARAMETERS


Projection System - Universal Transverse Mercator (UTM)
 UTM Zone 19
 Datum - Provisional South American 1956
 Hemisphere - North

BUILDING DAMAGE RATIO (TOTAL) BY PARROQUIA FOR 1812 CASE AFTER STRUCTURAL MEASURES


STUDY ON DISASTER PREVENTION BASIC PLAN IN THE METROPOLITAN DISTRICT OF CARACAS IN THE BOLIVARIAN REPUBLIC OF VENEZUELA


Map 05/03



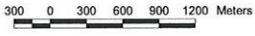


ALCALDIA
Del Distrito
Metropolitano
De Caracas





Scale 1 : 65 000



LEGEND

- Road Network
- Other Roads
- Tunnel
- Municipal Limit
- River
- Stream
- Contour Lines (Major)
- Contour Lines (Minor)
- Study Area for sediment disaster
- Barrio Area
- Sabo dam
- Channel Works

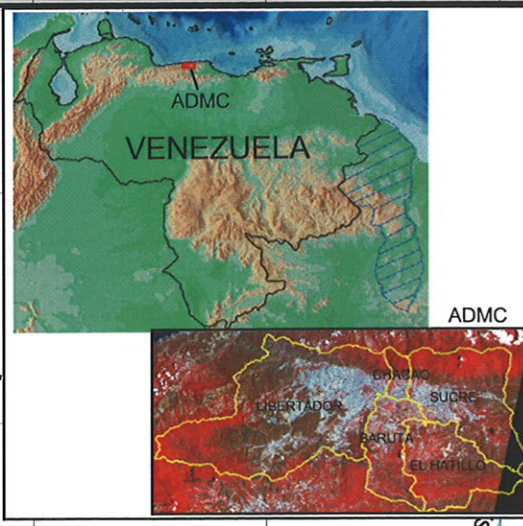
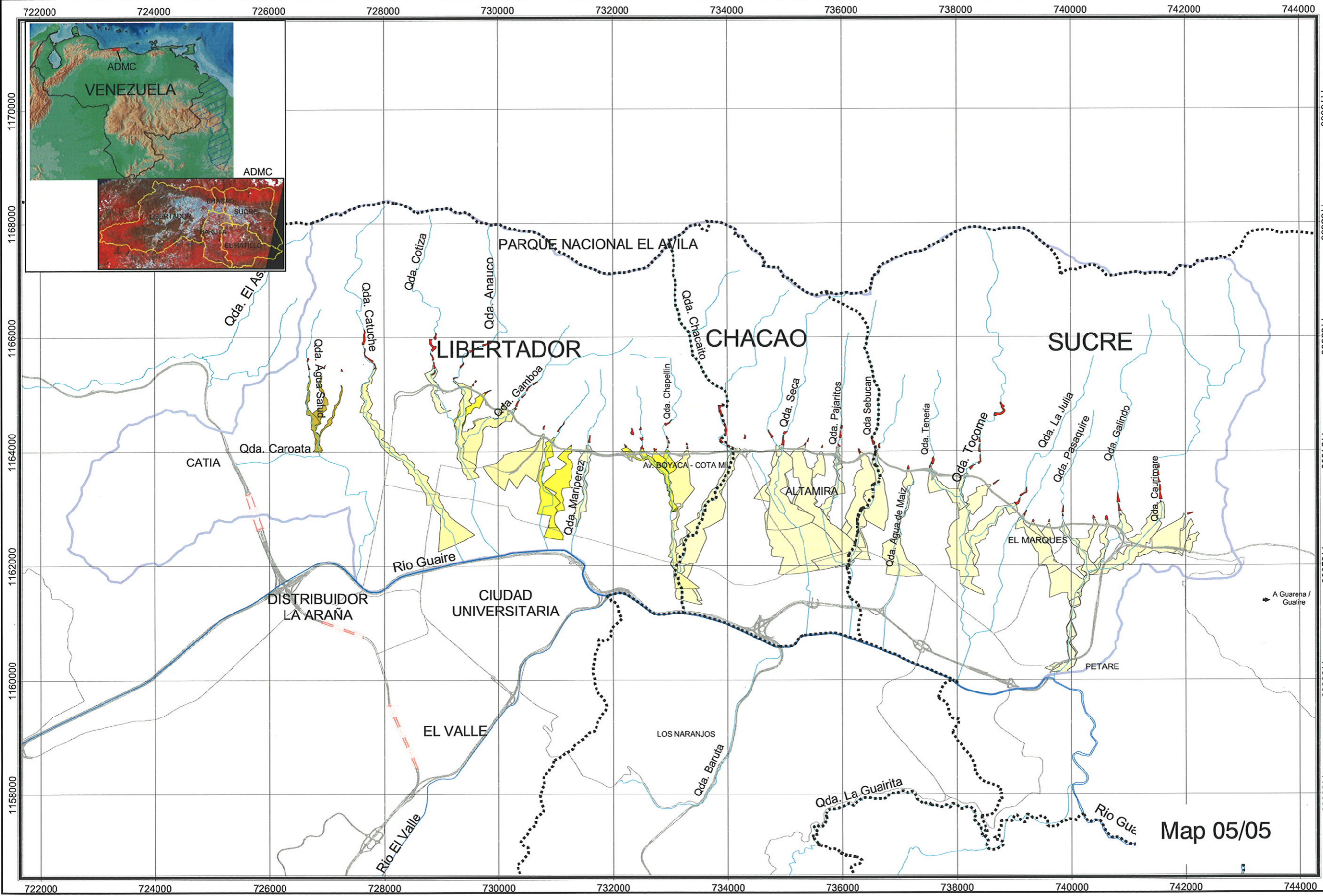
Source: JICA Study Team
Elaboration Date: 2004

MAP PROJECTION PARAMETERS
 Projection System - Universal Transverse Mercator (UTM)
 UTM Zone 19
 Datum - Provisional South American 1956
 Hemisphere - North

STRUCTURE FOR SEDIMENT CONTROL

STUDY ON
DISASTER PREVENTION
BASIC PLAN
IN THE METROPOLITAN
DISTRICT OF CARACAS IN
THE BOLIVARIAN
REPUBLIC OF VENEZUELA

Map 05/04



N

Scale 1 : 65 000

300 0 300 600 900 1200 Meters

LEGEND

- Road Network
- Other Roads
- Tunnel
- Municipal Limit
- River
- Stream
- Sediment Study Area
- Watershed Boundary
- Barrio Boundary
- Sabo dams

House Density/ha

Yellow Zone	0 - 15
Light Yellow	16 - 30
Yellow	31 - 46
Dark Yellow	47 - 62

Note:
Yellow Zone - Affected area

Source: JICA Study Team
Elaboration Date: 2004

MAP PROJECTION PARAMETERS

Projection System - Universal Transverse Mercator (UTM)

UTM Zone 19

Datum - Provisional South American 1956

Hemisphere - North

DEBRIS FLOW RISK AFTER STRUCTURAL MEASURES

STUDY ON
DISASTER PREVENTION
BASIC PLAN
IN THE METROPOLITAN
DISTRICT OF CARACAS IN
THE BOLIVARIAN
REPUBLIC OF VENEZUELA

Map 05/05