

LEGEND

- Road Network
- Other Roads
- Tunnel
- Municipal Limit
- River
- Stream
- Contour Lines (Major)
- Contour Lines (Minor)
- Study Area for sediment disaster
- Barrio Area

Number of Houses at Risk

- 0 - 1 /0.1 ha
- 2 - 9 /0.1 ha
- 10 - 19 /0.1 ha
- 20 - 29 /0.1 ha
- More than 30 /0.1 ha

Source: JICA Study Team
Elaboration Date: 2004

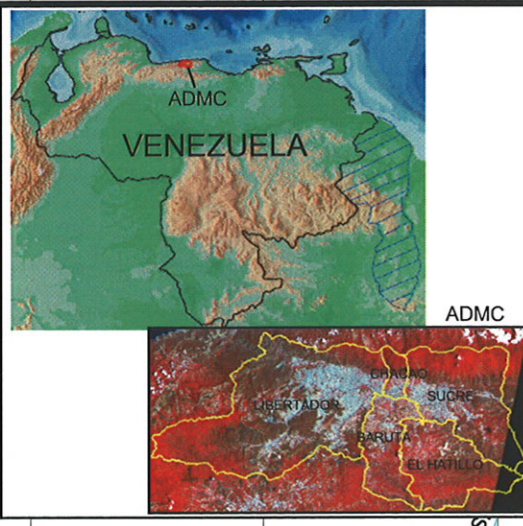
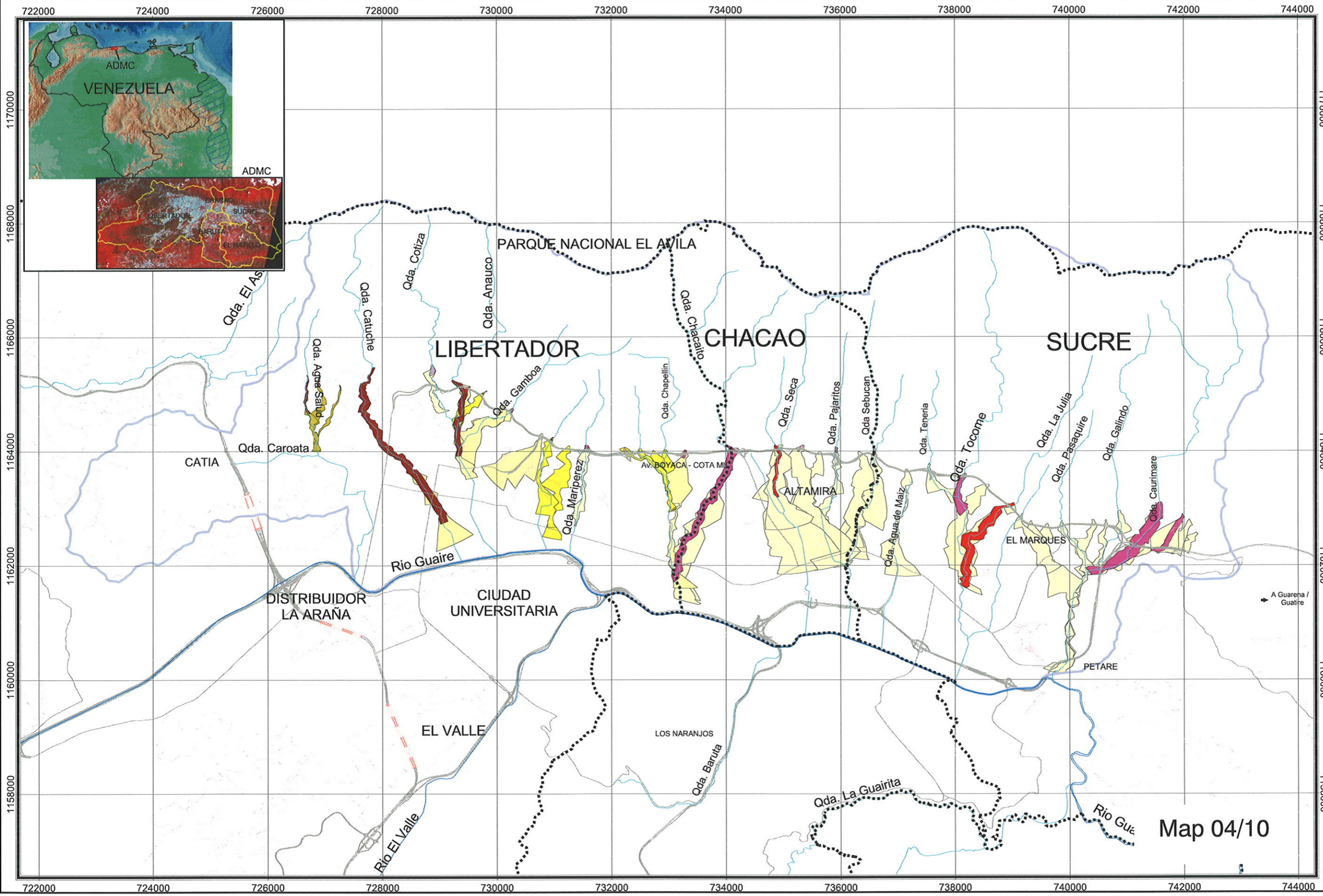
MAP PROJECTION PARAMETERS

Projection System - Universal Transverse Mercator (UTM)
 UTM Zone 19
 Datum - Provisional South American 1956
 Hemisphere - North

LANDSLIDE RISK

STUDY ON
 DISASTER PREVENTION
 BASIC PLAN
 IN THE METROPOLITAN
 DISTRICT OF CARACAS IN
 THE BOLIVARIAN
 REPUBLIC OF VENEZUELA

Map 04/09



N

Scale 1 : 65 000

LEGEND

- Road Network
- Other Roads
- Tunnel
- Municipal Limit
- River
- Stream
- Sediment Study Area
- Watershed Boundary
- Barrio Boundary

House Density/ha

Red Zone	Yellow Zone
0 - 1	0 - 15
2 - 10	16 - 30
11 - 20	31 - 46
21 - 99	47 - 62

Note:
 Red Zone - Seriously affected area (houses can be destroyed by the impact of debris flow)
 Yellow Zone - Affected area

Source: JICA Study Team
 Elaboration Date: 2004

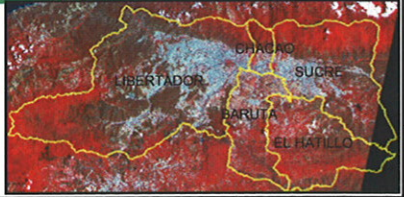
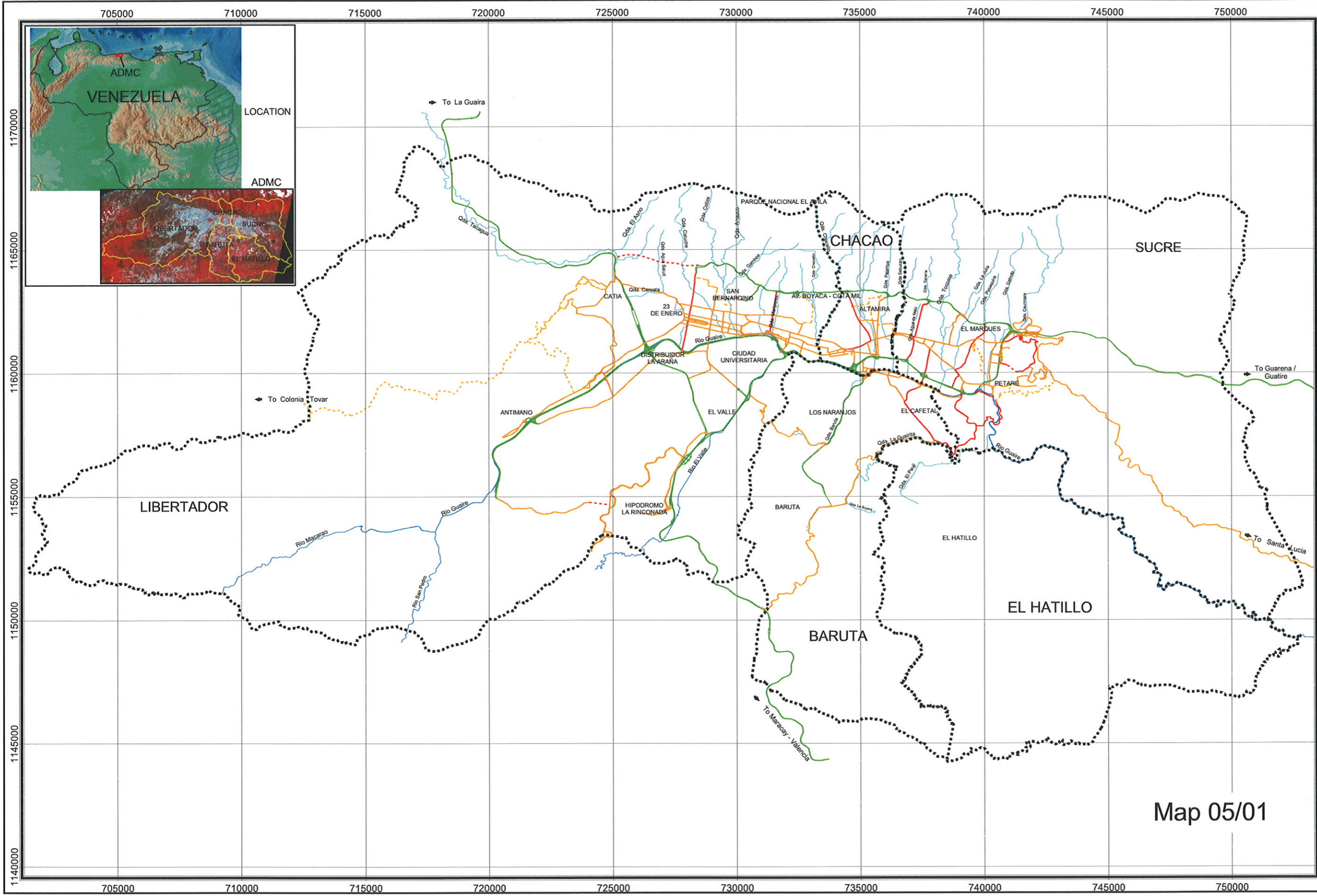
MAP PROJECTION PARAMETERS

Projection System - Universal Transverse Mercator (UTM)
 UTM Zone 19
 Datum - Provisional South American 1956
 Hemisphere - North

DEBRIS FLOW RISK

STUDY ON
 DISASTER PREVENTION
 BASIC PLAN
 IN THE METROPOLITAN
 DISTRICT OF CARACAS IN
 THE BOLIVARIAN
 REPUBLIC OF VENEZUELA

Map 04/10



Scale 1 : 150 000



LEGEND

- Municipality Boundary
- Major Road Network
- River
- Stream
- Emergency Route**
- Primary Emergency Route
- Primary Emergency Route (Needs Widening & Maintenance)
- Primary Emergency Route (Proposed)
- Secondary Emergency Route (Needs Widening & Maintenance)
- Secondary Emergency Route (Proposed)

Source: Jica Team Study.
Elaboration Date: 2004

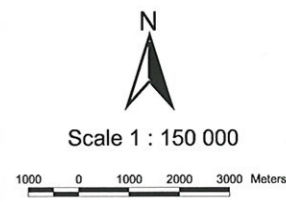
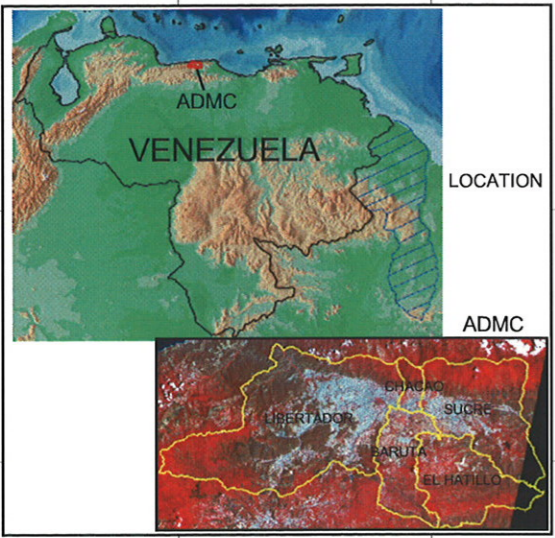
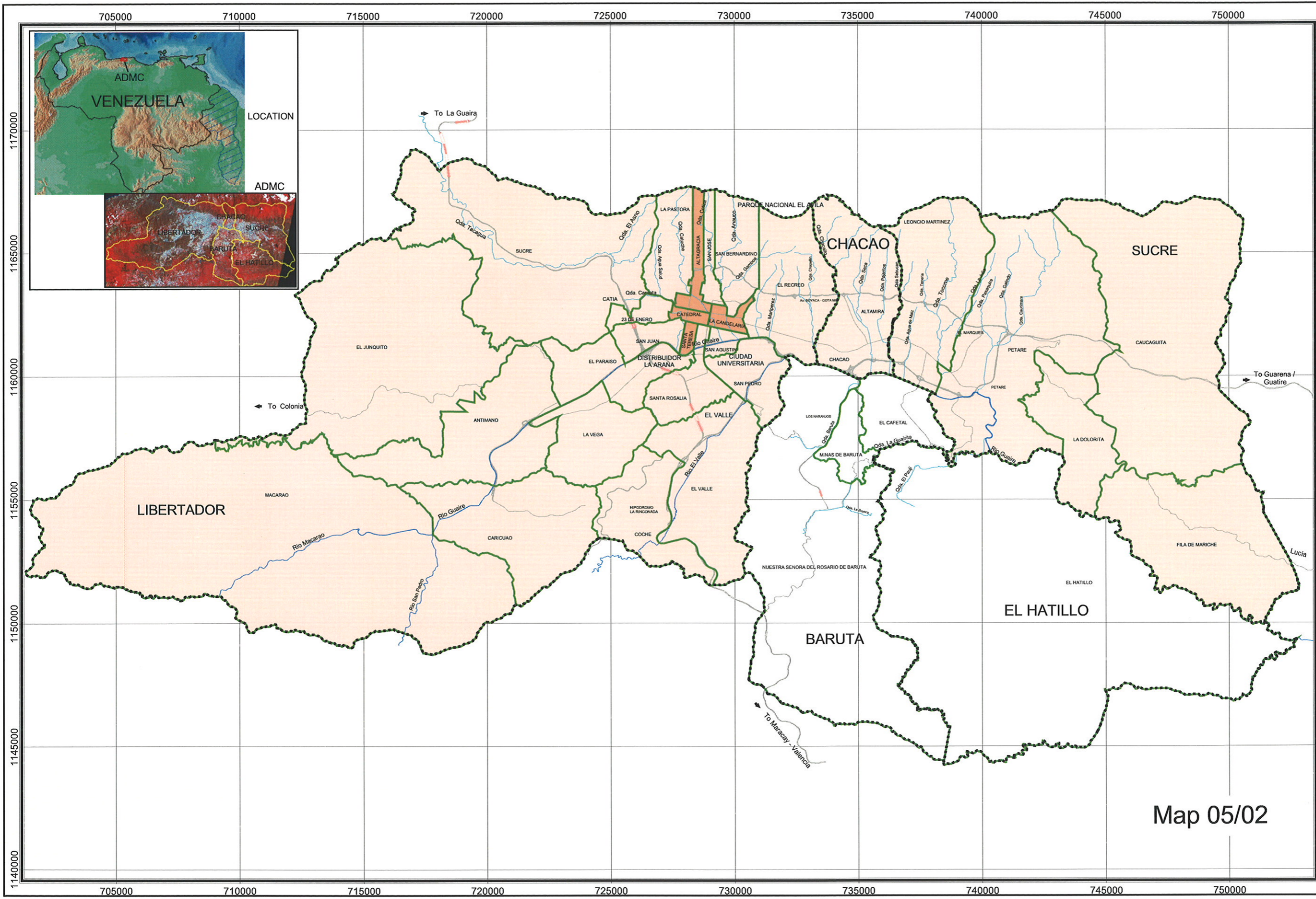
MAP PROJECTION PARAMETERS

Projection System - Universal Transverse Mercator (UTM)
UTM Zone 19
Datum - Provisional South American 1956
Hemisphere - North

EMERGENCY ROUTES

STUDY ON
DISASTER PREVENTION
BASIC PLAN
IN THE METROPOLITAN
DISTRICT OF CARACAS IN
THE BOLIVARIAN
REPUBLIC OF VENEZUELA

Map 05/01



LEGEND

- Municipality Boundary
 - ▭ Parroquia Boundary
 - Road Network
 - Tunnel
 - River
 - Stream
- Building Damage Ratio in %**
- 0 - 1.01
 - 1.01 - 5.1
 - 5.1 - 9.5
 - 9.5 - 15.15
 - 15.15 - 23.27

Source: JICA Study Team.
Elaboration Date: 2003

MAP PROJECTION PARAMETERS

Projection System - Universal Transverse Mercator (UTM)
UTM Zone 19
Datum - Provisional South American 1956
Hemisphere - North

BUILDING DAMAGE RATIO (TOTAL) BY PARROQUIA FOR 1967 CASE AFTER STRUCTURAL MEASURES

STUDY ON DISASTER PREVENTION BASIC PLAN IN THE METROPOLITAN DISTRICT OF CARACAS IN THE BOLIVARIAN REPUBLIC OF VENEZUELA

Map 05/02