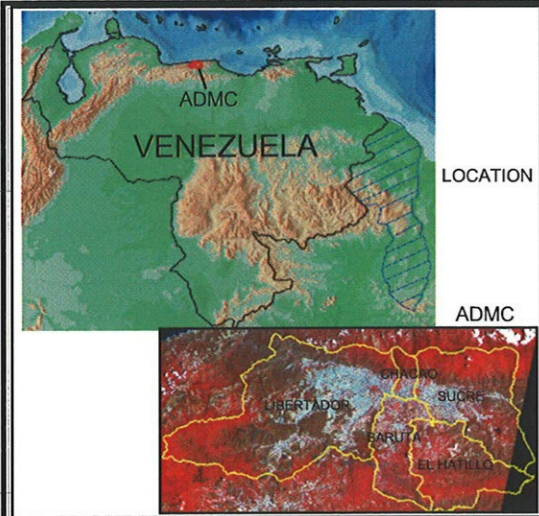


1170000
1168000
1166000
1164000
1162000
1160000

1170000
1168000
1166000
1164000
1162000
1160000

728000 730000 732000 734000 736000 738000 740000 742000

728000 730000 732000 734000 736000 738000 740000 742000



Scale 1 : 50 000



LEGEND

- Municipality Boundary
- Road Network
- Tunnel
- River
- Stream
- Order of Stream**
- 1st Order
- 2nd Order
- 3rd Order
- 4th Order
- 5th Order
- Unit Catchment (2nd Order)
- Active Collapse
- New Collapse Covered with Grass
- New Collapse Under Tree
- Old Collapse Covered with Tree
- Old Collapse without Tree

Source: JICA Study Team.
Elaboration Date: 2003.

MAP PROJECTION PARAMETERS

Projection System - Universal Transverse Mercator (UTM)
UTM Zone 19
Datum - Provisional South American 1956
Hemisphere - North

POTENTIAL STEEP SLOPE FAILURE

STUDY ON
DISASTER PREVENTION
BASIC PLAN
IN THE METROPOLITAN
DISTRICT OF CARACAS IN
THE BOLIVARIAN
REPUBLIC OF VENEZUELA

Map 01/14

STRIBUIDOR LA ARAÑA

CIUDAD UNIVERSITARIA

ALTAMIRA

EL MARQUES

To Guarena / Guatire

PARQUE NACIONAL EL AVILA

Av. BOYACA - COTA MIL

Rio Guaire

Qda. Mariperez

Qda. Agua de Maiz

Qda. Agua Salud
Qda. Cauiche

Qda. Cotiza

Qda. Anarcho

Qda. Gamboa

Qda. Chapellin

Qda. Chacalito

Qda. Seca

Qda. Pajaritos

Qda. Soborain

Qda. Tenena

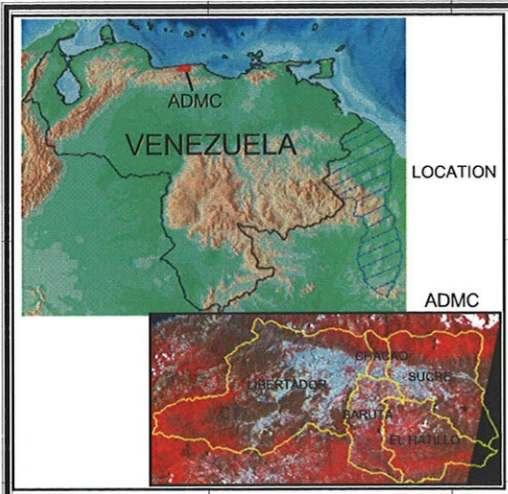
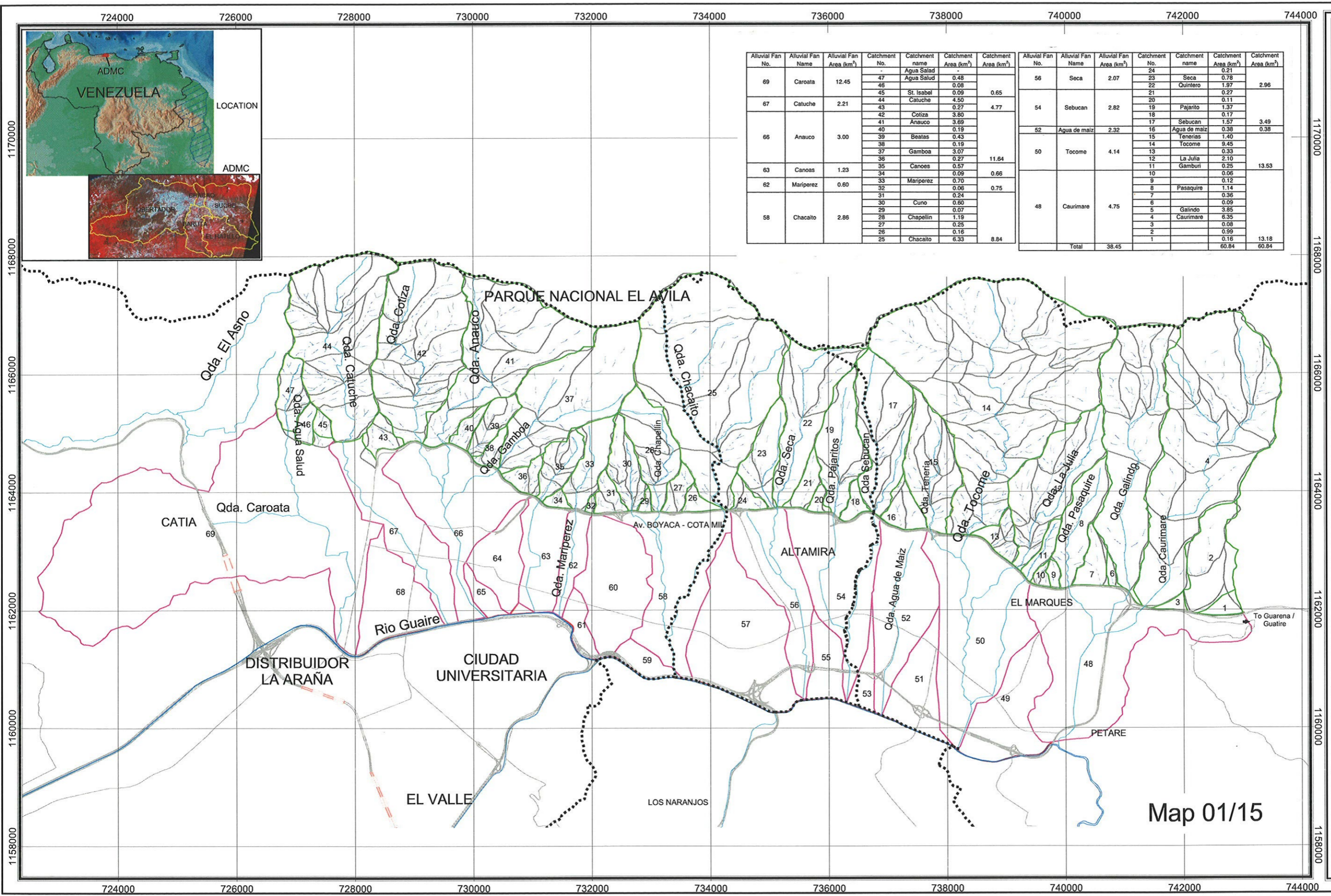
Qda. Ticomé

Qda. La Julia

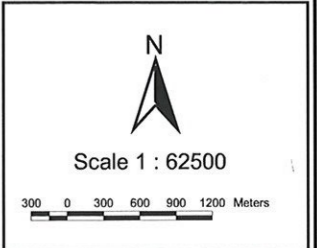
Qda. Pasaquire

Qda. Galindo

Qda. Caurimera



| Alluvial Fan No. | Alluvial Fan Name | Alluvial Fan Area (km ²) | Catchment No. | Catchment name | Catchment Area (km ²) | Catchment Area (km ²) |
|------------------|-------------------|--------------------------------------|---------------|----------------|-----------------------------------|-----------------------------------|
| 69 | Caroata | 12.45 | 47 | Agua Salud | 0.48 | |
| | | | 46 | | 0.08 | |
| | | | 45 | St. Isabel | 0.09 | 0.65 |
| | | | 44 | Catucho | 4.50 | |
| 67 | Catucho | 2.21 | 43 | | 0.27 | 4.77 |
| | | | 42 | Coliza | 3.80 | |
| | | | 41 | Anauro | 3.69 | |
| | | | 40 | | 0.19 | |
| 66 | Anauro | 3.00 | 39 | Beatas | 0.43 | |
| | | | 38 | | 0.19 | |
| | | | 37 | Gamboa | 3.07 | |
| | | | 36 | | 0.27 | 11.64 |
| 63 | Canoas | 1.23 | 35 | Canoas | 0.57 | |
| | | | 34 | | 0.09 | 0.66 |
| 62 | Mariperez | 0.60 | 33 | Mariperez | 0.70 | |
| | | | 32 | | 0.06 | 0.75 |
| 58 | Chacalito | 2.86 | 31 | | 0.24 | |
| | | | 30 | Cuno | 0.60 | |
| | | | 29 | | 0.07 | |
| | | | 28 | Chapellin | 1.19 | |
| | | | 27 | | 0.25 | |
| | | | 26 | | 0.16 | |
| | | | 25 | Chacalito | 6.33 | 8.84 |
| 56 | Seca | 2.07 | 24 | | 0.21 | |
| | | | 23 | Seca | 0.78 | |
| | | | 22 | Quintero | 1.97 | 2.96 |
| | | | 21 | | 0.27 | |
| 54 | Sebucan | 2.82 | 20 | | 0.11 | |
| | | | 19 | Pajarito | 1.37 | |
| | | | 18 | | 0.17 | |
| | | | 17 | Sebucan | 1.57 | 3.49 |
| 52 | Agua de maiz | 2.32 | 16 | Agua de maiz | 0.38 | 0.38 |
| | | | 15 | Tenerias | 1.40 | |
| 50 | Tocome | 4.14 | 14 | Tocome | 9.45 | |
| | | | 13 | | 0.33 | |
| | | | 12 | La Julia | 2.10 | |
| | | | 11 | Gamburi | 0.25 | 13.53 |
| | | | 10 | | 0.06 | |
| | | | 9 | | 0.12 | |
| 48 | Caurimare | 4.75 | 8 | Pasaquire | 1.14 | |
| | | | 7 | | 0.36 | |
| | | | 6 | | 0.09 | |
| | | | 5 | Galindo | 3.85 | |
| | | | 4 | Caurimare | 6.35 | |
| | | | 3 | | 0.08 | |
| | | | 2 | | 0.99 | |
| Total | | 38.45 | 1 | | 60.64 | 60.84 |



LEGEND

- Municipality Boundary (dashed line)
- Road Network (solid line)
- Tunnel (red line with cross-ticks)
- River (blue line)
- Stream (light blue line)
- Alluvial Fan System (pink line)
- Unit Catchment (grey line)
- Principal Catchment (green line)

Order of Stream

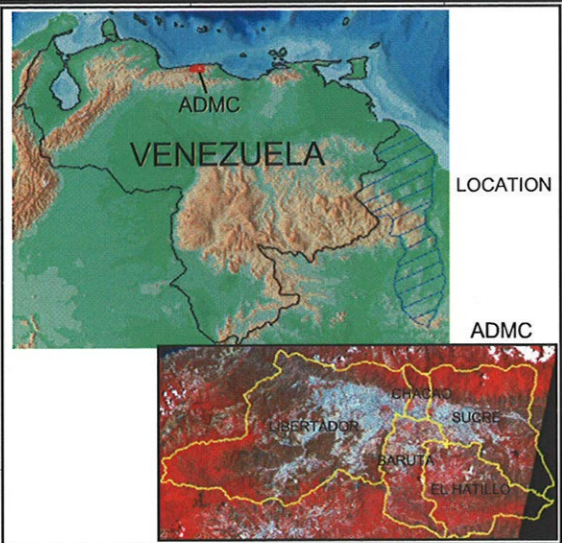
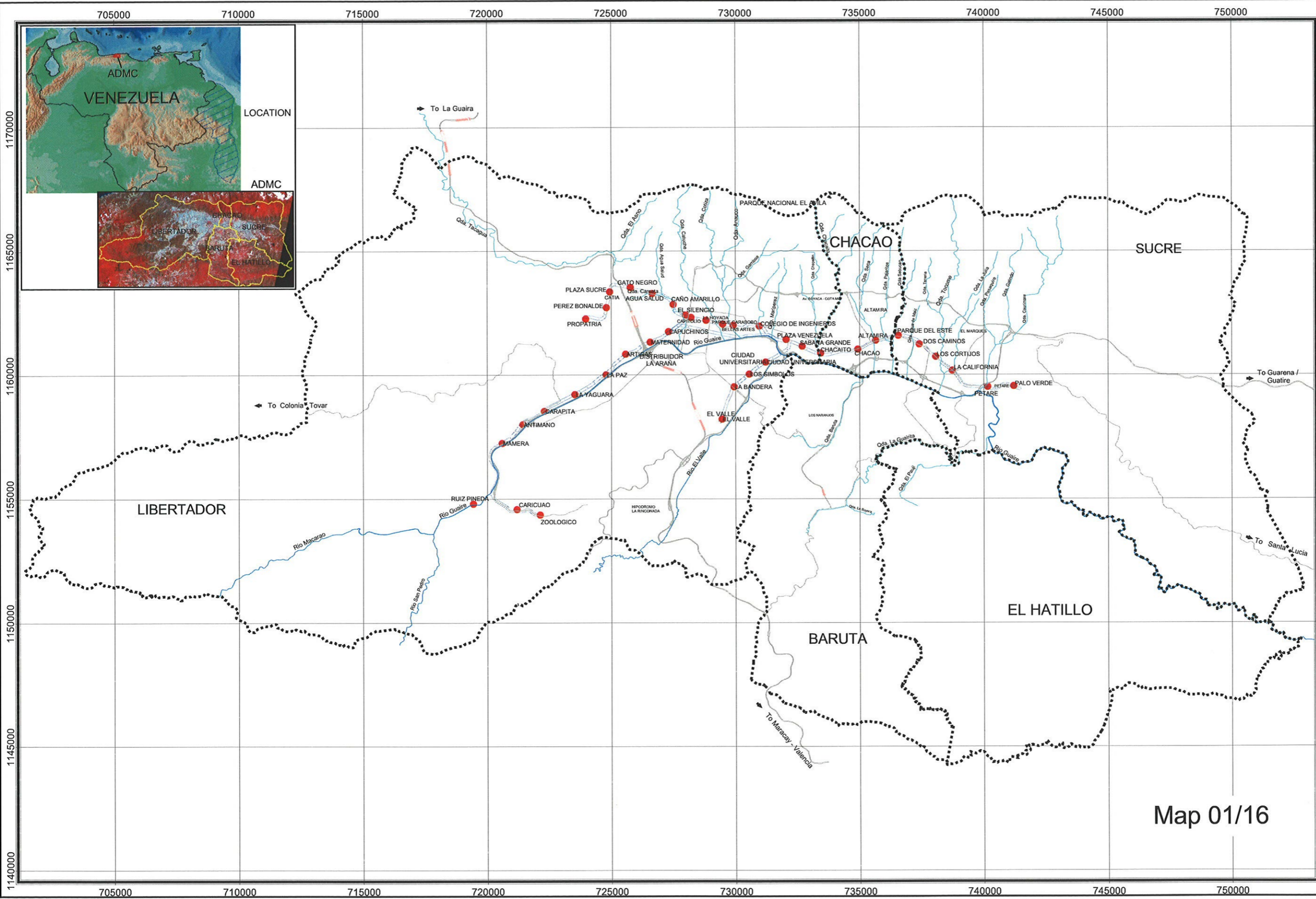
- 1st Order (thin blue line)
- 2nd Order (dashed blue line)
- 3rd Order (dotted blue line)
- 4th Order (dash-dot blue line)
- 5th Order (thick blue line)

Source: JICA Study Team.
Elaboration Date: 2004.

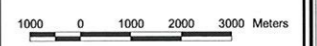
MAP PROJECTION PARAMETERS
 Projection System - Universal Transverse Mercator (UTM)
 UTM Zone 19
 Datum - Provisional South American 1956
 Hemisphere - North

MOUNTAIN STREAM SYSTEM
 STUDY ON
 DISASTER PREVENTION
 BASIC PLAN
 IN THE METROPOLITAN
 DISTRICT OF CARACAS IN
 THE BOLIVARIAN
 REPUBLIC OF VENEZUELA

Map 01/15



Scale 1 : 150 000



LEGEND

- Municipality Boundary
- Road Network
- Tunnel
- River
- Stream
- Metro Line
- Metro Station

Source: Fontur / AMDC.
Date Elaboration: 2003

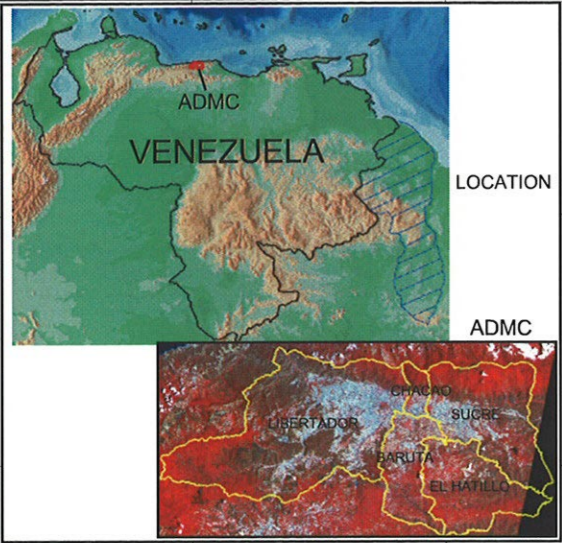
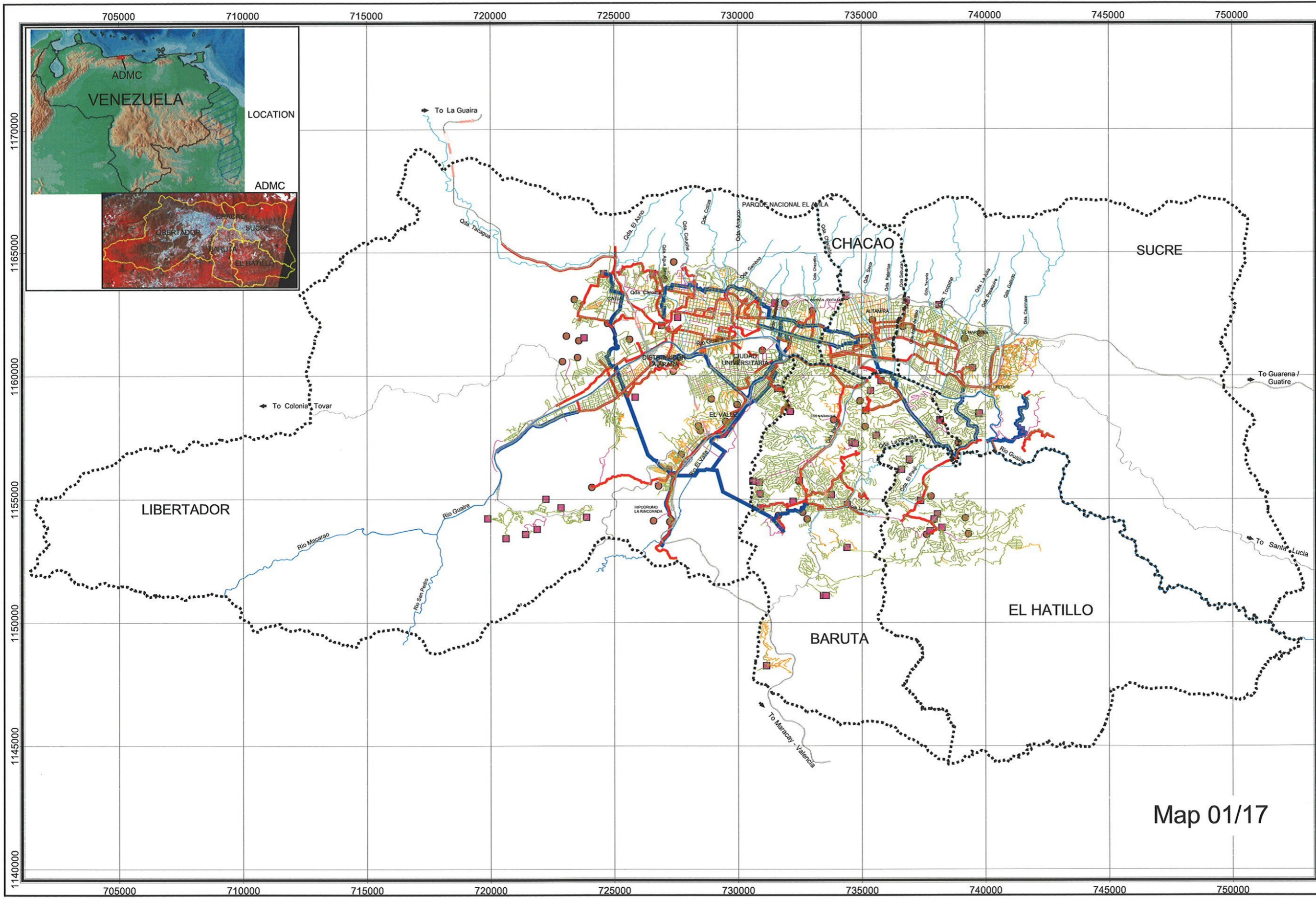
MAP PROJECTION PARAMETERS

Projection System - Universal Transverse Mercator (UTM)
UTM Zone 19
Datum - Provisional South American 1956
Hemisphere - North

METRO STATIONS

STUDY ON
DISASTER PREVENTION
BASIC PLAN
IN THE METROPOLITAN
DISTRICT OF CARACAS IN
THE BOLIVARIAN
REPUBLIC OF VENEZUELA

Map 01/16



Scale 1 : 150 000



LEGEND

- Municipality Boundary
- Road Network
- Tunnel
- River
- Stream
- Main Water Supply (Inches)**
- 0.5 - 3
- 3.5 - 10
- 10.5 - 18
- 18.5 - 36
- >36.5
- Water Tanks
- Pumping Stations

Source: Hidrocapital.
Date Elaboration: 2003.

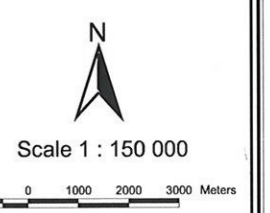
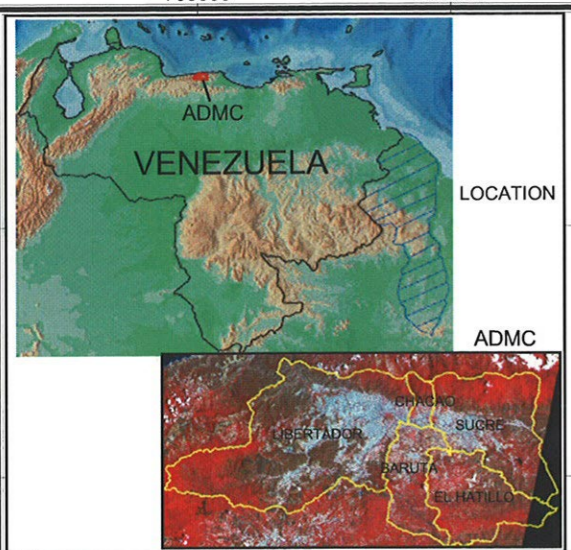
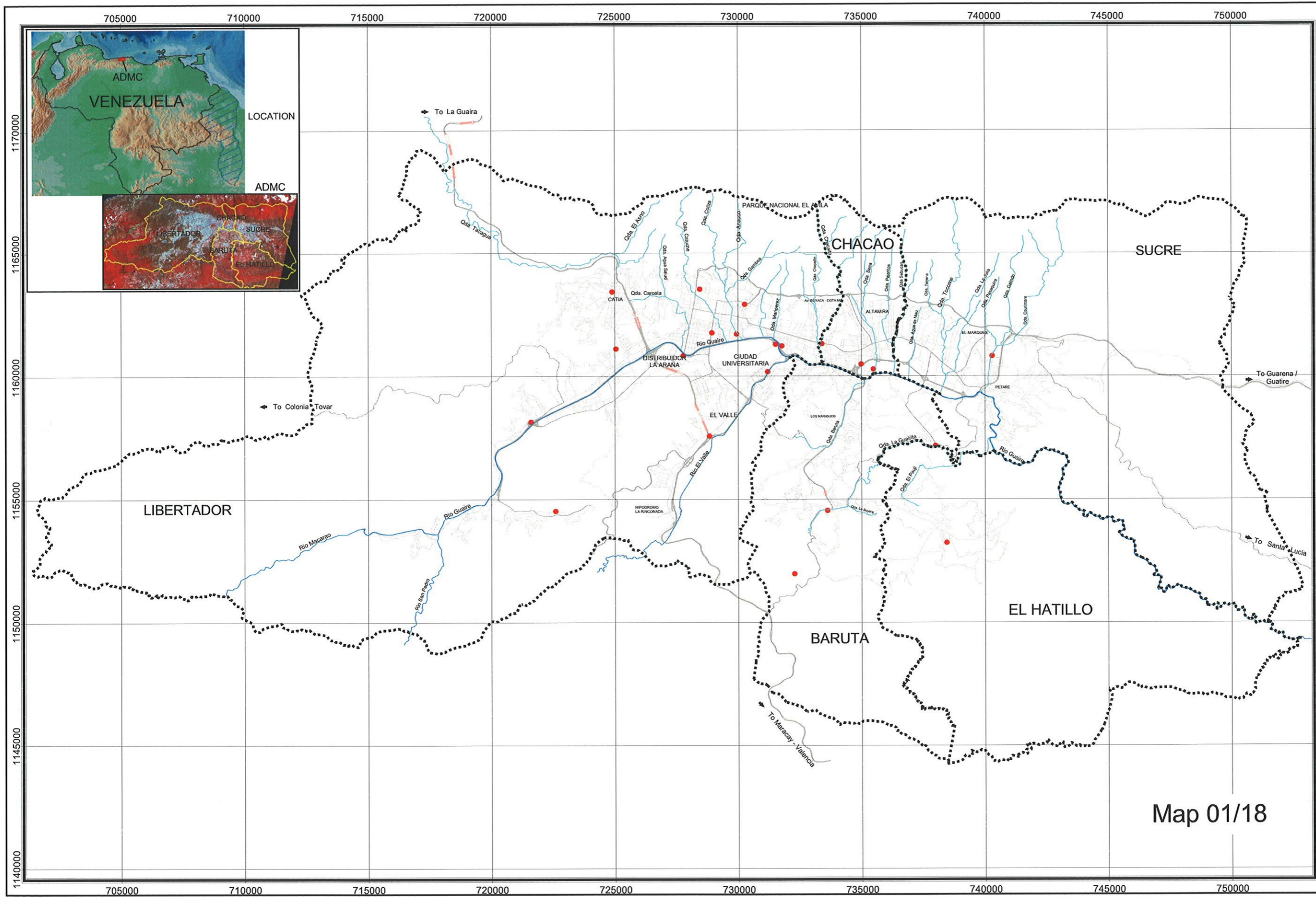
MAP PROJECTION PARAMETERS

Projection System - Universal Transverse Mercator (UTM)
UTM Zone 19
Datum - Provisional South American 1956
Hemisphere - North

WATER SUPPLY LINES (HIDROCAPITAL)

STUDY ON
DISASTER PREVENTION
BASIC PLAN
IN THE METROPOLITAN
DISTRICT OF CARACAS IN
THE BOLIVARIAN
REPUBLIC OF VENEZUELA

Map 01/17



LEGEND

- Municipality Boundary
- Road Network
- ~ Tunnel
- ~ River
- ~ Stream
- Firefighters Station

Source: Planning Secretary / AMDC.
Elaboration Date: 2003

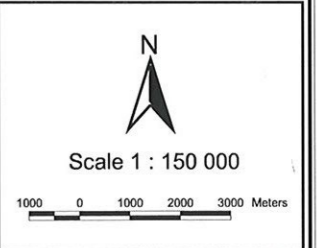
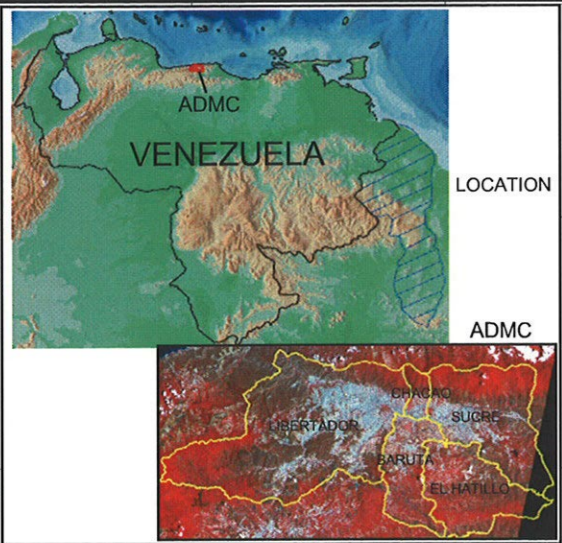
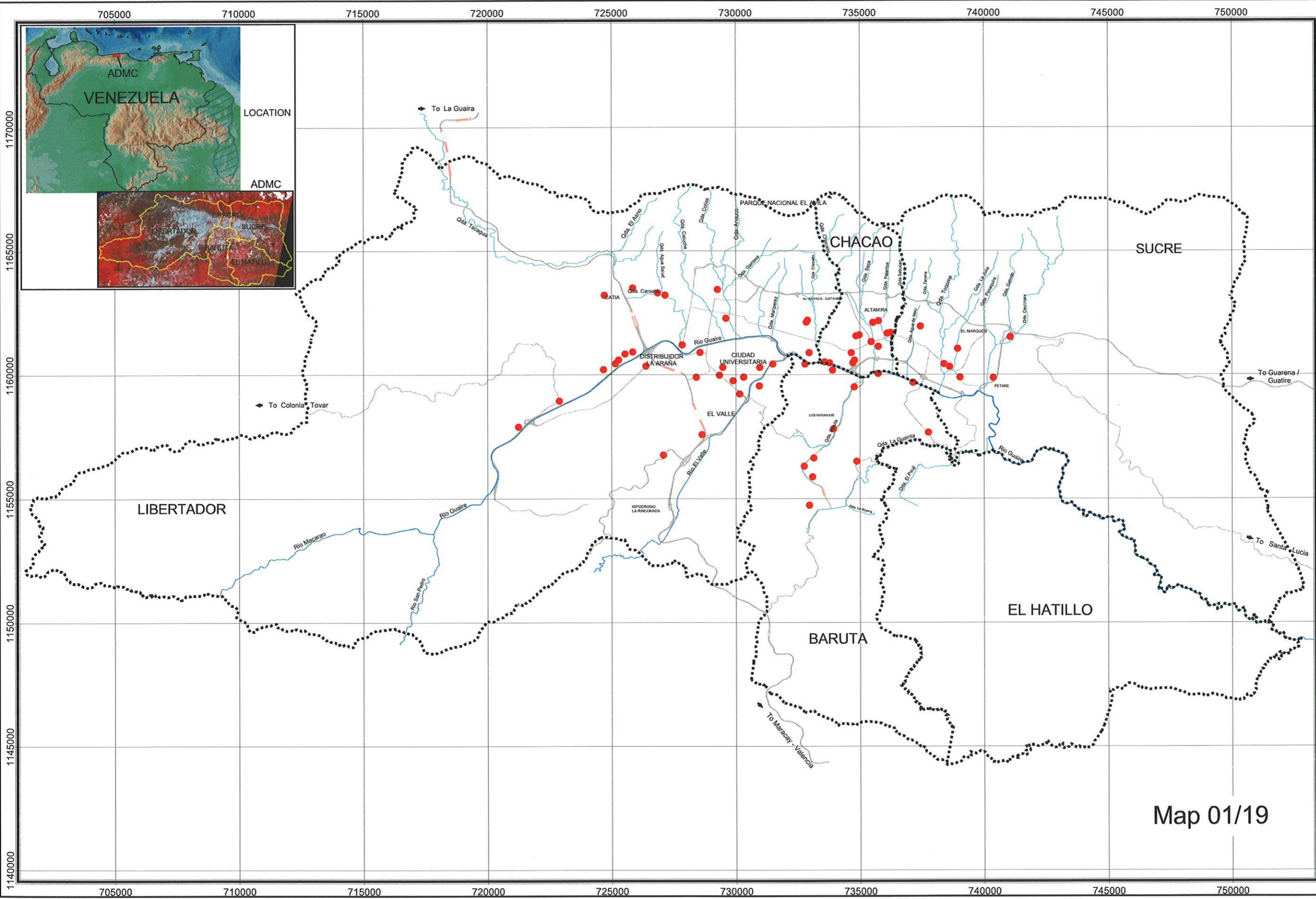
**MAP PROJECTION
PARAMETERS**

Projection System - Universal Transverse Mercator (UTM)
 UTM Zone 19
 Datum - Provisional South American 1956
 Hemisphere - North

**FIRE FIGHTING
STATION**

STUDY ON
DISASTER PREVENTION
BASIC PLAN
IN THE METROPOLITAN
DISTRICT OF CARACAS IN
THE BOLIVARIAN
REPUBLIC OF VENEZUELA

Map 01/18



- LEGEND**
- Municipality Boundary
 - Road Network
 - Tunnel
 - River
 - Stream
 - Gasoline Stations

Source: Planning Secretary / AMDC.
Elaboration Date: 2003

MAP PROJECTION PARAMETERS
 Projection System - Universal Transverse Mercator (UTM)
 UTM Zone 19
 Datum - Provisional South American 1956
 Hemisphere - North

GASOLINE STATIONS
 STUDY ON
 DISASTER PREVENTION
 BASIC PLAN
 IN THE METROPOLITAN
 DISTRICT OF CARACAS IN
 THE BOLIVARIAN
 REPUBLIC OF VENEZUELA

Map 01/19