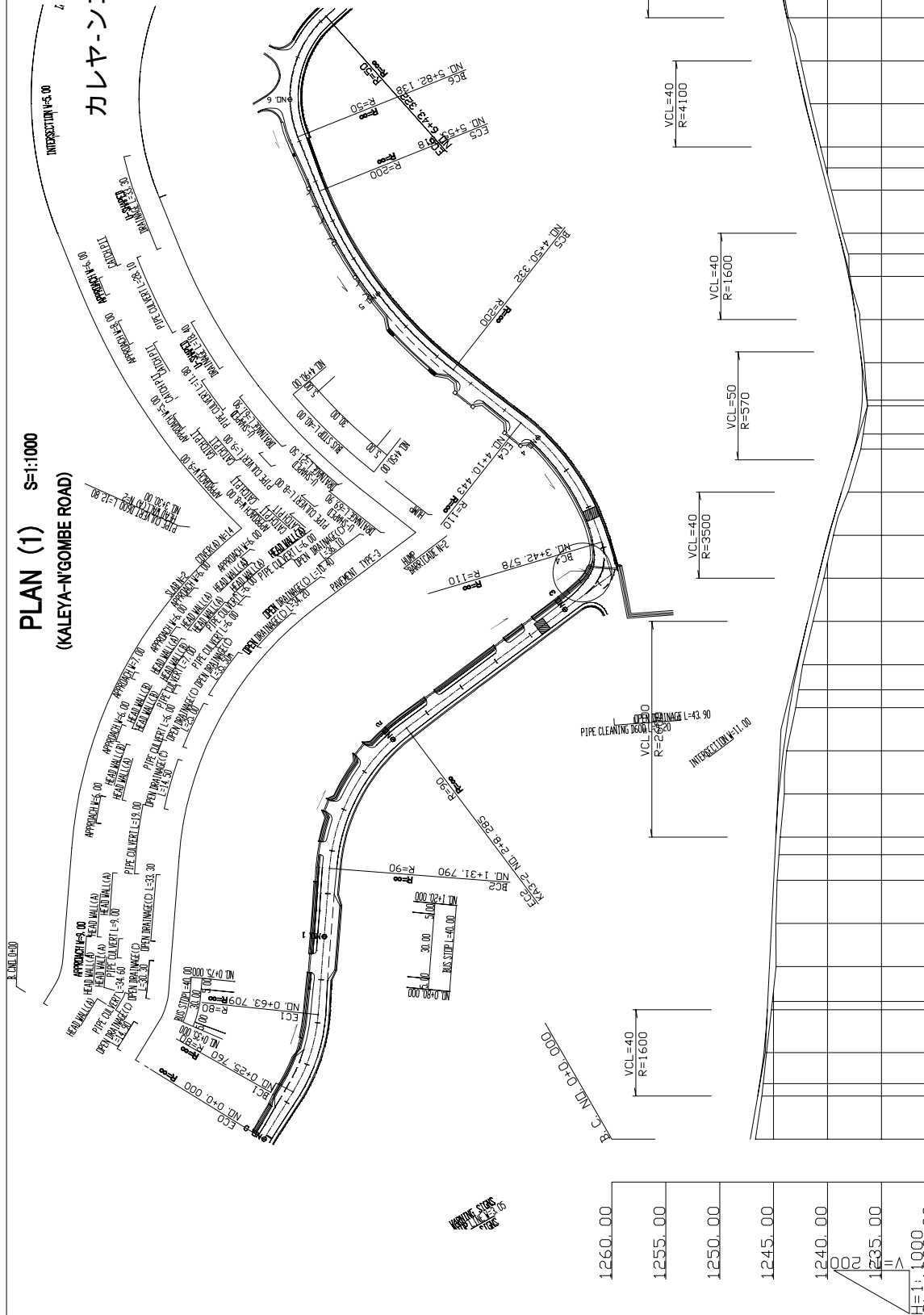


PLAN (1) S=1:1000
(KALEYA-N'GOMBE ROAD)

カレヤ-ンゴンベ道路平面・縦断面(1)



Station No.	Distance	CL Reg Levels	Gradient
0+00	0.00	1246.68	1247.149
0+20	20.00	1246.08	1245.783
0+40	40.00	1245.64	1245.000
0+60	60.00	1245.18	1244.150
0+80	80.00	1244.76	1243.300
1+00	100.00	1244.78	1242.450
1+20	120.00	1244.68	1241.600
1+40	140.00	1244.37	1240.750
1+60	160.00	1244.00	1240.000
1+80	180.00	1243.78	1239.250
2+00	200.00	1242.93	1238.500
2+20	220.00	1242.31	1237.750
2+40	240.00	1241.53	1237.000
2+60	260.00	1240.35	1236.250
2+80	280.00	1239.44	1235.500
3+00	300.00	1238.00	1234.750
3+20	320.00	1236.91	1234.000
3+40	340.00	1236.944	1233.250
3+60	360.00	1236.56	1232.500
3+80	380.00	1237.00	1231.750
4+00	400.00	1238.04	1231.000
4+20	420.00	1238.63	1230.250
4+40	440.00	1239.63	1229.500
4+60	460.00	1240.00	1228.750
4+80	480.00	1241.62	1228.000
5+00	500.00	1242.068	1227.250
5+20	520.00	1243.63	1226.500
5+40	540.00	1244.34	1225.750
5+60	560.00	1244.51	1225.000
5+80	580.00	1244.43	1224.250
6+00	600.00	1243.99	1223.500

MINISTRY OF LOCAL GOVERNMENT AND HOUSING THE REPUBLIC OF ZAMBIA	THE PROJECT FOR IMPROVEMENT AND MAINTENANCE OF LUSAKA CITY ROADS (PHASE II)	JAPAN ENGINEERING CONSULTANTS CO.LTD	KALEYA-N'GOMBE ROAD	SCALE S=1:1000	MINISTRY OF LOCAL GOVERNMENT AND HOUSING THE REPUBLIC OF ZAMBIA	APPROVED	DATE	SHEET NO
					PLAN (1/2)	DATE		
		JAPAN ENGINEERING CONSULTANTS CO.LTD		SUBMITTED		MAR.2005		5/42

