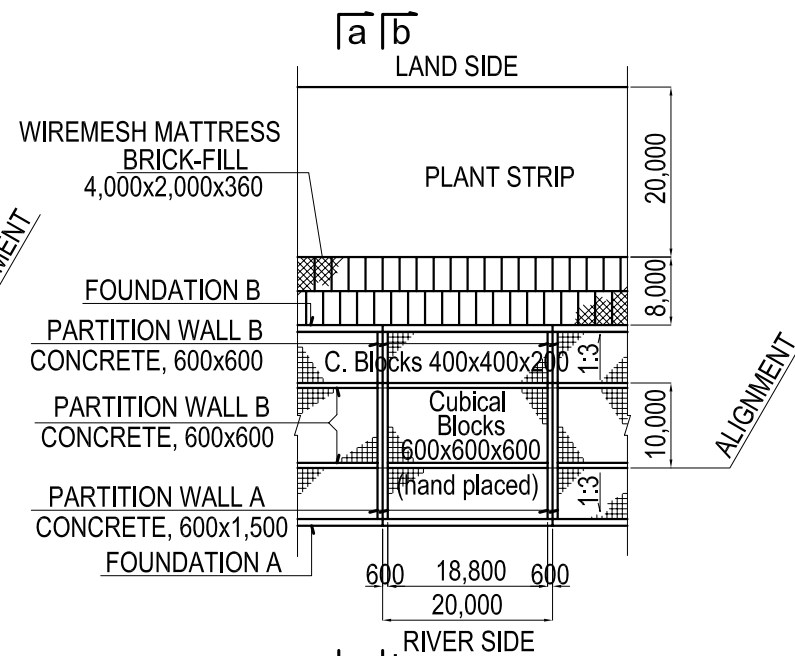
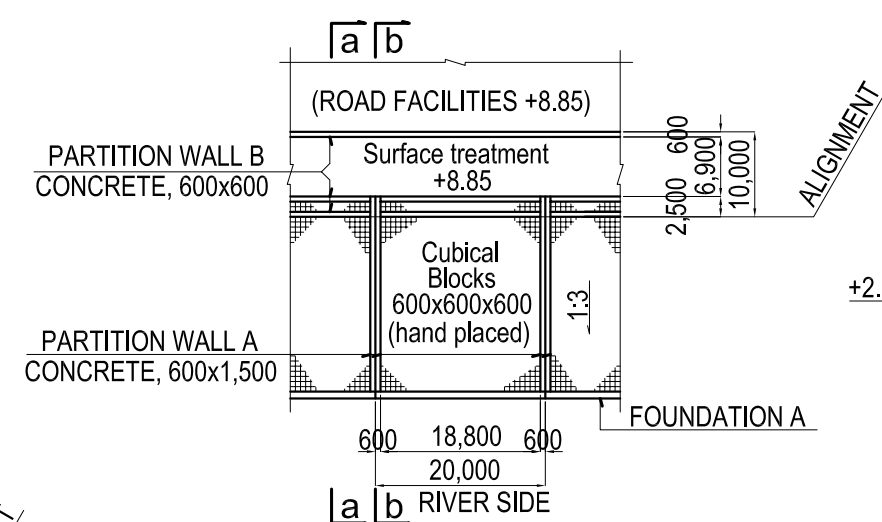


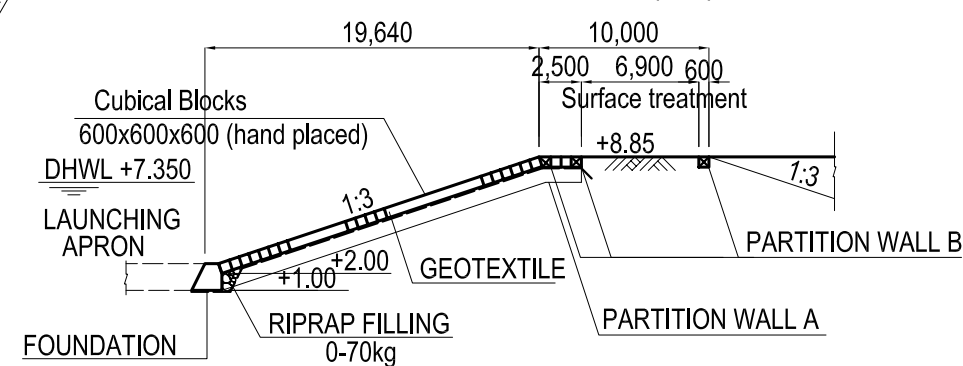
REVETMENT TYPE-A1(L1)



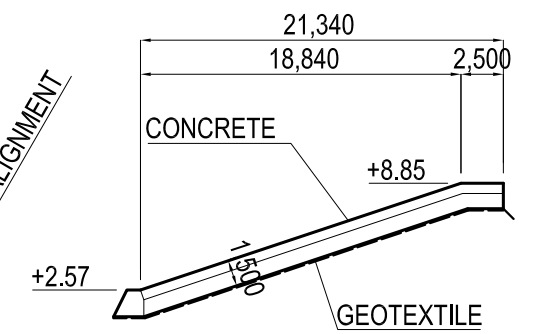
REVETMENT TYPE-A2,B2(L2,L3,R2,R3 & R4)



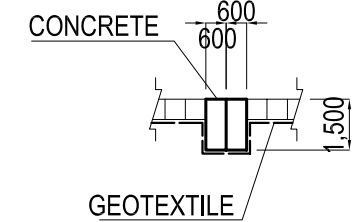
REVETMENT TYPE-B1(R1)



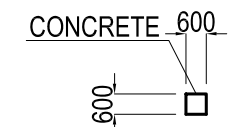
SLOPE PROTECTION (a-a)



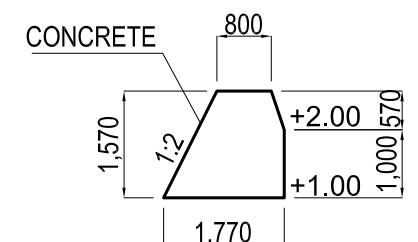
PARTITION WALL A (b-b)



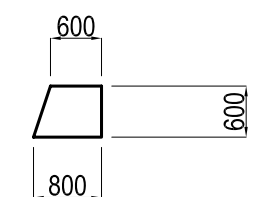
PARTITION WALL A (c-c)



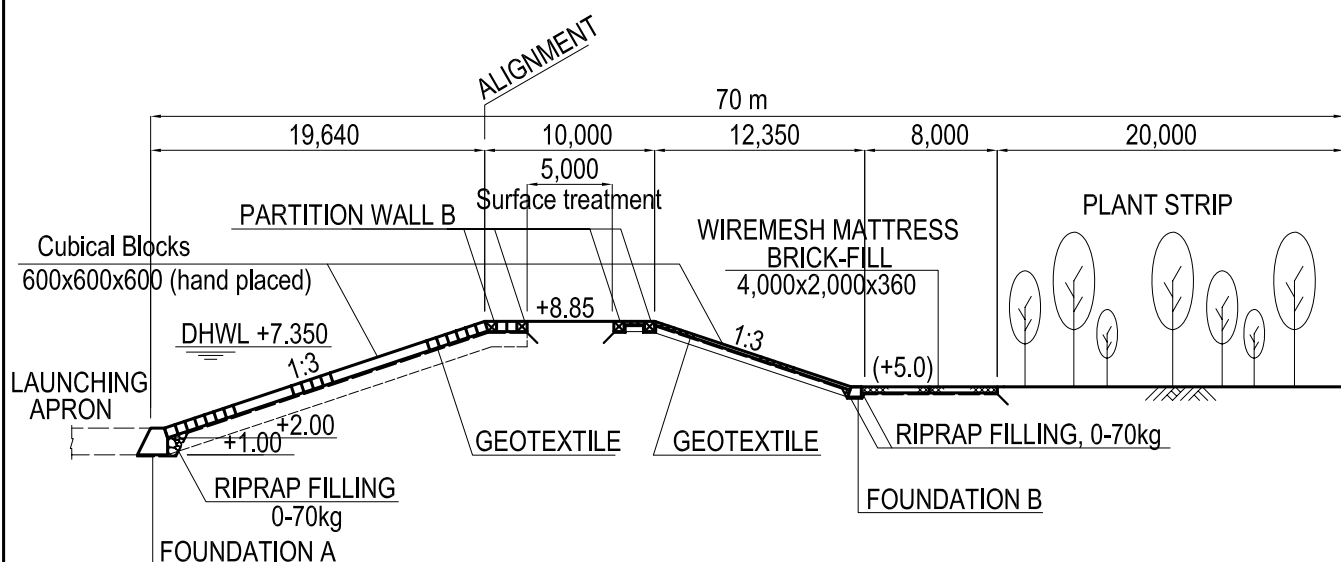
PARTITION WALL B



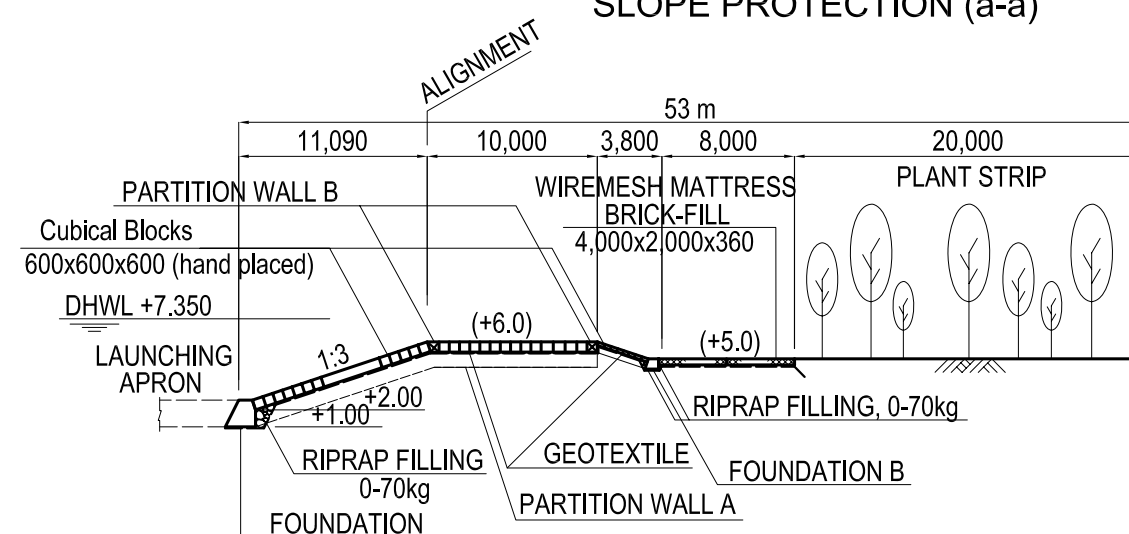
FOUNDATION A



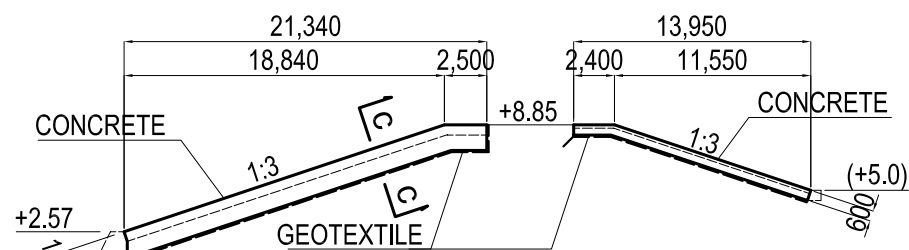
FOUNDATION B



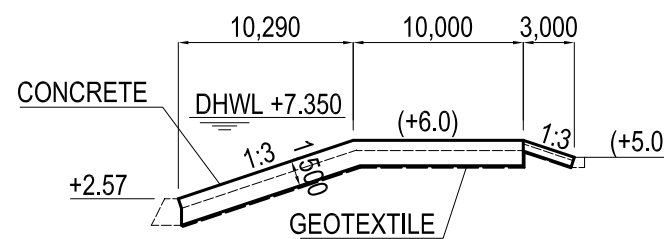
SLOPE PROTECTION TYPE A-1(a-a)



SLOPE PROTECTION (a-a)



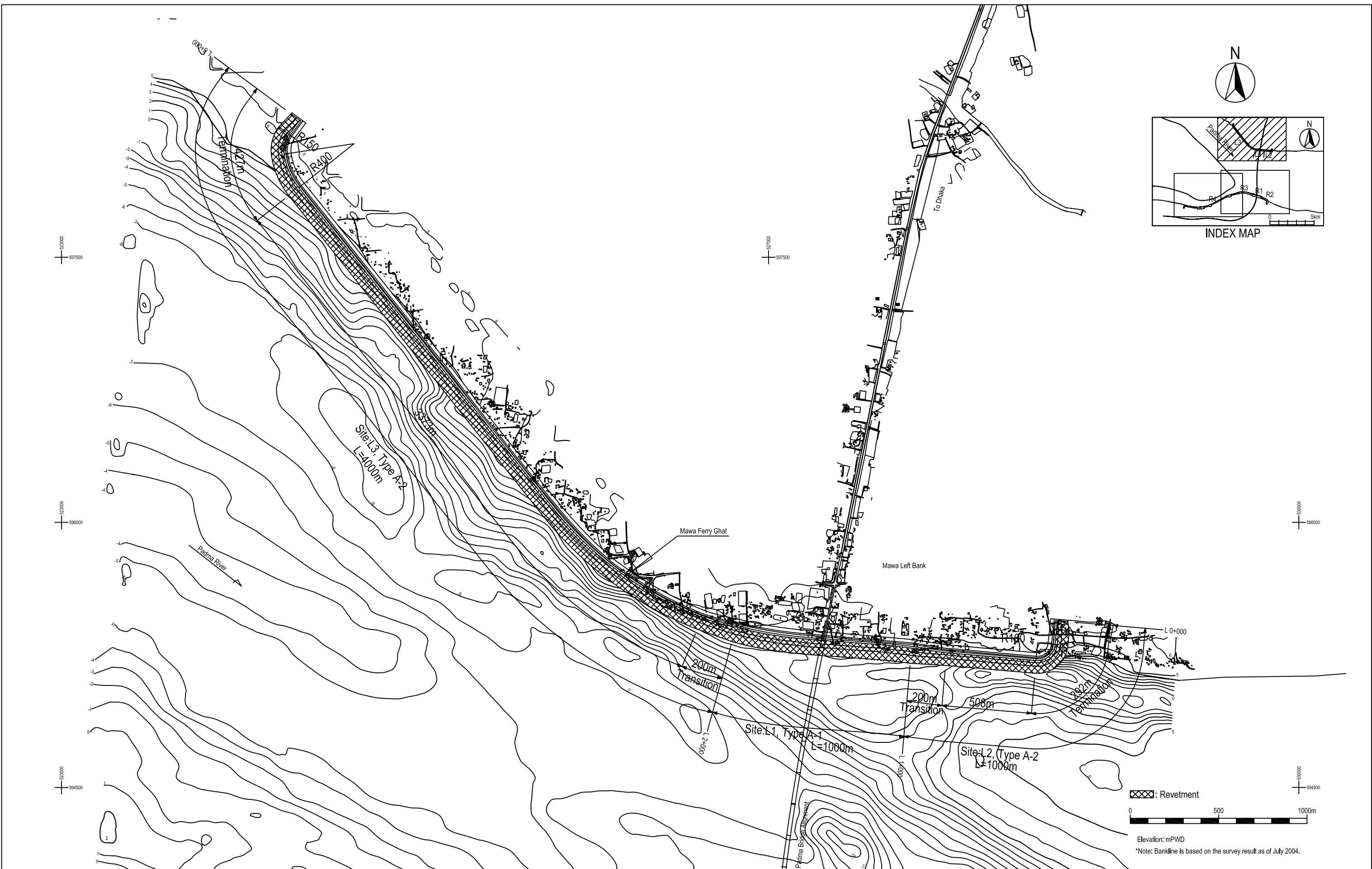
PARTITION WALL A PARTITION WALL B
SLOPE PROTECTION TYPE A-1(b-b)



PARTITION WALL A PARTITION WALL B
SLOPE PROTECTION TYPE-A2,B2 (L2,L3,R2,R3 & R4) (b-b)

General Notes :

- 1) unless otherwise shown , all dimensions are in mm.
- 2) DHWL = Design High Water Level (+7.350mPWD)
- 3) SHWL = Standard High Water Level (+5.810mPWD)
- 4) SLWL = Standard Low Water Level (+1.430mPWD)
- 5) MWL = Mean Water Level (+3.02mPWD)
- 6) DSL = Design Scour Level
- 7) Cubical Blocks for Slope Protection : Class B 15
- 8) Cubical Blocks for Launching Apron : Class B 25
- 9) Materials in the drawing to be referred to "Guidelines and Design Manual for Standardized Bank Protection Structures, Dec. 2001".



JAMUNA MULTIPURPOSE BRIDGE AUTHORITY
THE PEOPLE'S REPUBLIC OF BANGLADESH

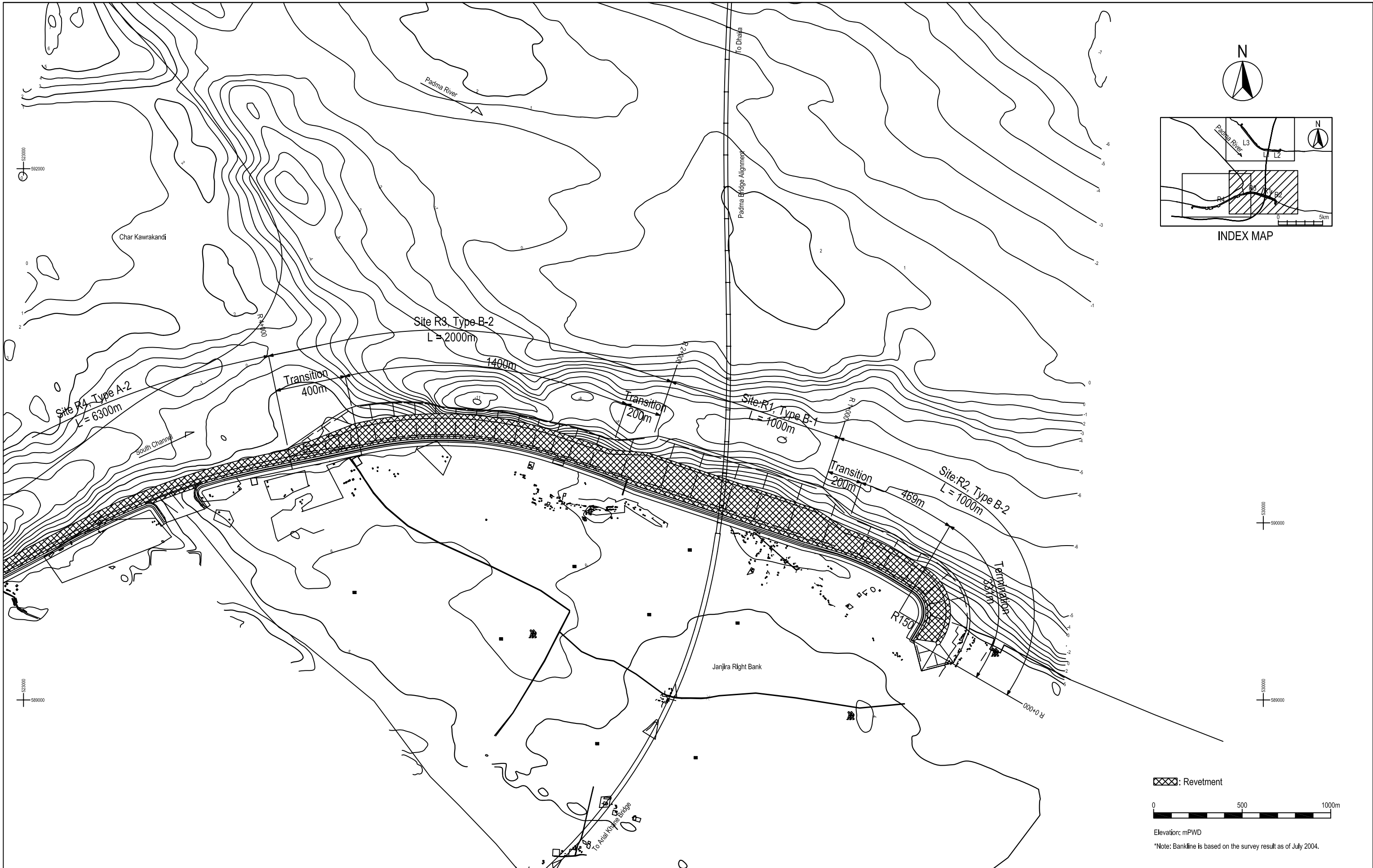
THE FEASIBILITY STUDY OF PADMA BRIDGE
IN THE PEOPLE'S REPUBLIC OF BANGLADESH

JICA JAPAN INTERNATIONAL COOPERATION AGENCY (JICA)
NK NIPPON KOEI CO., LTD. in Association with
CPC CONSTRUCTION PROJECT CONSULTANTS, INC.

TITLE :
River Works
Plan of River Works:
Left Bank of Padma River
(Sites L1, L2 and L3)

DATE :
MARCH-2005

SHEET NO.
PDM FS D7



▨: Revetment



Elevation: mPWD

*Note: Bankline is based on the survey result as of July 2004.

JAMUNA MULTIPURPOSE BRIDGE AUTHORITY
THE PEOPLE'S REPUBLIC OF BANGLADESH

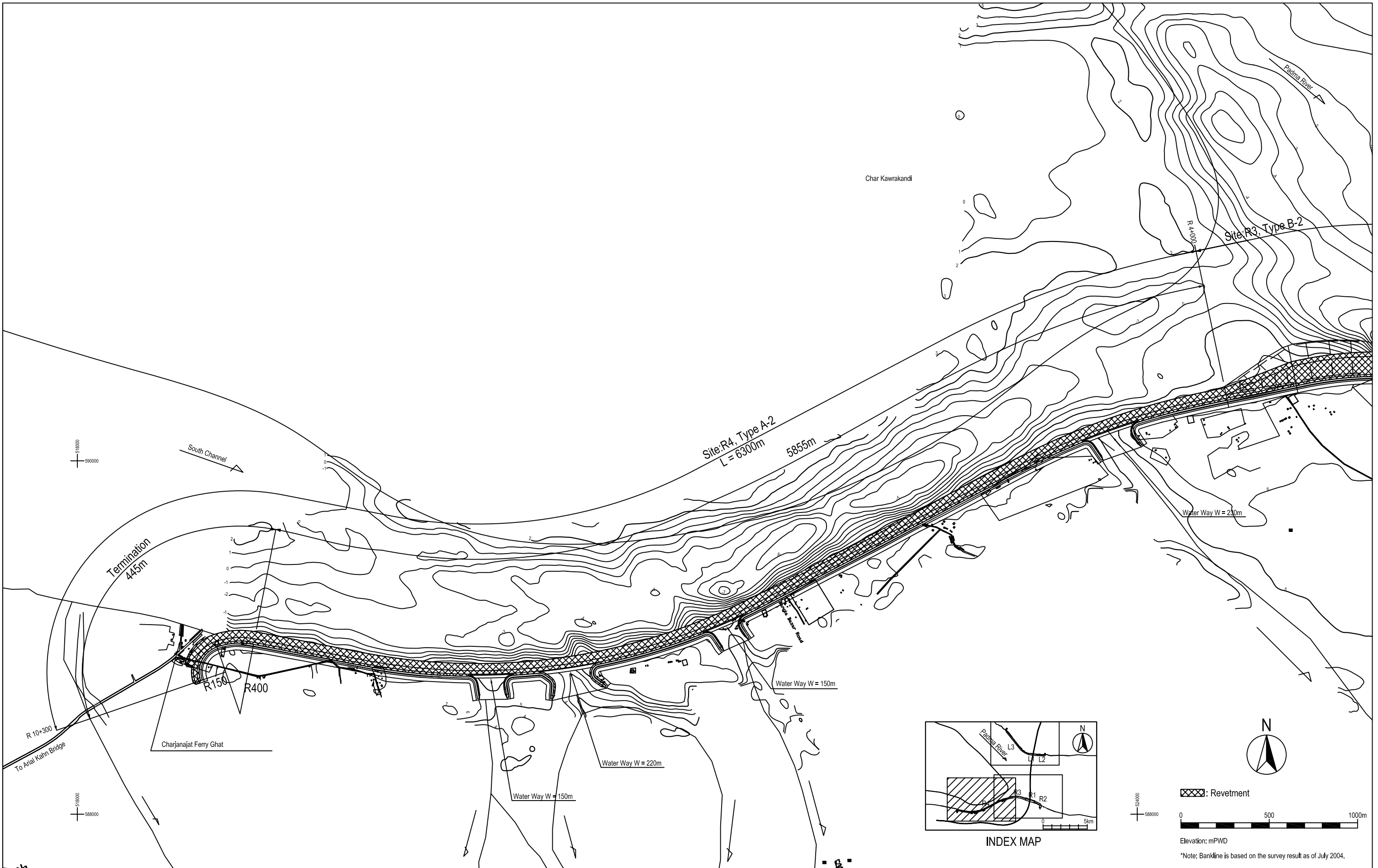
THE FEASIBILITY STUDY OF PADMA BRIDGE
IN THE PEOPLE'S REPUBLIC OF BANGLADESH

JICA JAPAN INTERNATIONAL COOPERATION AGENCY (JICA)
NK NIPPON KOEI CO., LTD. in Association with
CPC CONSTRUCTION PROJECT CONSULTANTS, INC.

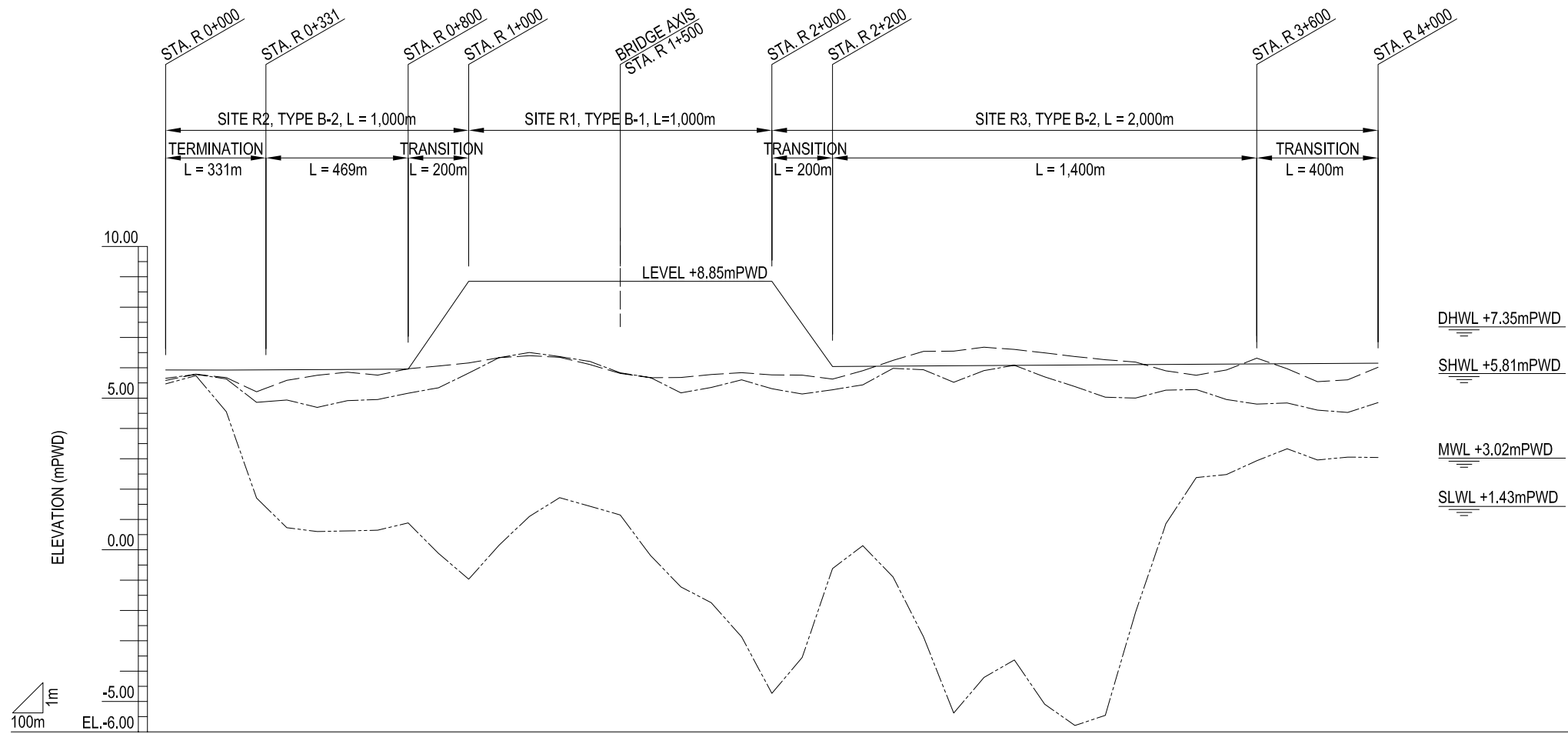
TITLE :
River Works
Plan of River Works:
Right Bank of Padma River
(Sites R1, R2 and R3)

DATE :
MARCH-2005

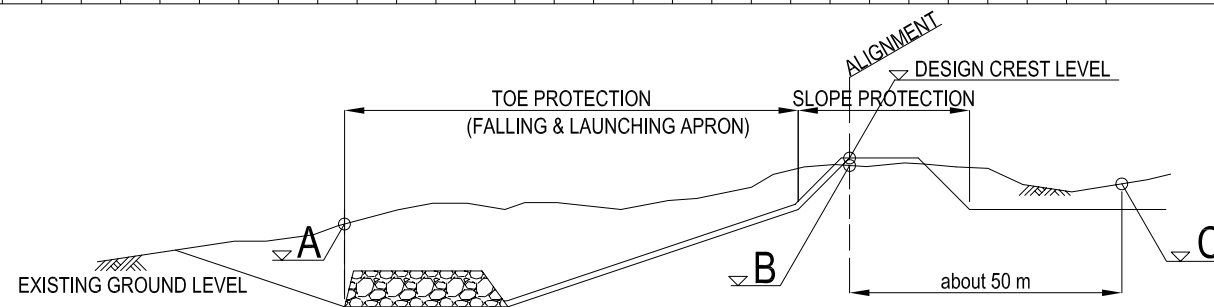
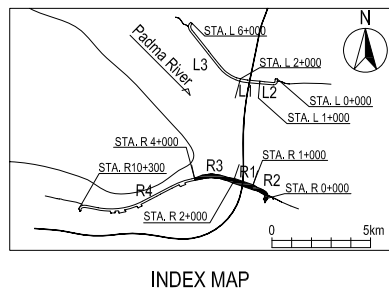
SHEET NO.
PDM FS D8



<p>JAMUNA MULTIPURPOSE BRIDGE AUTHORITY THE PEOPLE'S REPUBLIC OF BANGLADESH</p>	<p>THE FEASIBILITY STUDY OF PADMA BRIDGE IN THE PEOPLE'S REPUBLIC OF BANGLADESH</p>	<p>JICA JAPAN INTERNATIONAL COOPERATION AGENCY (JICA) NK NIPPON KOEI CO., LTD. in Association with CPC CONSTRUCTION PROJECT CONSULTANTS, INC.</p>	<p>TITLE : River Works Plan of River Works: Right Bank of Padma River (Site R4)</p>	<p>DATE : MARCH-2005</p>	<p>SHEET NO. PDM FS D9</p>
---	---	--	---	------------------------------	--------------------------------



LONGITUDINAL SLOPE OF DESIGN CREST	LEVEL L = 331m		$i = 1/16,400$ L = 469m		L=200m		LEVEL L = 1,000m		$i = 1/16,400$ L = 2,000m	
	DESIGN CREST LEVEL (mPWD)	EXISTING GROUND LEVEL (mPWD)	DESIGN CREST LEVEL (mPWD)	EXISTING GROUND LEVEL (mPWD)	DESIGN CREST LEVEL (mPWD)	EXISTING GROUND LEVEL (mPWD)	DESIGN CREST LEVEL (mPWD)	EXISTING GROUND LEVEL (mPWD)	DESIGN CREST LEVEL (mPWD)	EXISTING GROUND LEVEL (mPWD)
	5.93	5.47	5.93	5.65	5.93	5.79	5.93	5.93	5.93	5.93
	5.93	5.74	5.93	5.78	5.93	5.68	5.93	5.93	5.93	5.93
	5.93	4.55	5.93	5.63	5.93	5.21	5.93	5.93	5.93	5.93
	5.93	1.71	5.93	4.86	5.93	5.33	5.93	5.93	5.93	5.93
	5.93	1.40	5.93	4.89	5.93	5.59	5.93	5.93	5.93	5.93
	5.93	0.73	5.93	4.94	5.93	5.75	5.93	5.93	5.93	5.93
	5.94	0.60	5.94	4.69	5.94	5.85	5.94	5.94	5.94	5.94
	5.95	0.62	5.95	4.92	5.95	5.76	5.95	5.95	5.95	5.95
	5.95	0.65	5.95	4.96	5.95	5.97	5.95	5.95	5.95	5.95
	5.96	0.89	5.96	5.16	5.96	6.06	5.96	5.96	5.96	5.96
	7.40	-0.12	7.40	5.34	7.40	6.16	7.40	7.40	7.40	7.40
	8.85	-0.97	8.85	5.83	8.85	6.33	8.85	8.85	8.85	8.85
	8.85	0.15	8.85	6.33	8.85	6.40	8.85	8.85	8.85	8.85
	8.85	1.10	8.85	6.50	8.85	6.35	8.85	8.85	8.85	8.85
	8.85	1.72	8.85	6.37	8.85	6.11	8.85	8.85	8.85	8.85
	8.85	1.44	8.85	6.21	8.85	5.81	8.85	8.85	8.85	8.85
	8.85	1.15	8.85	5.83	8.85	5.67	8.85	8.85	8.85	8.85
	8.85	-0.19	8.85	5.68	8.85	5.68	8.85	8.85	8.85	8.85
	8.85	-1.22	8.85	5.17	8.85	5.78	8.85	8.85	8.85	8.85
	8.85	-1.74	8.85	5.35	8.85	5.84	8.85	8.85	8.85	8.85
	8.85	-2.87	8.85	5.60	8.85	5.76	8.85	8.85	8.85	8.85
	8.85	-4.73	8.85	5.31	8.85	5.76	8.85	8.85	8.85	8.85
	7.45	-3.55	7.45	5.14	7.45	5.63	7.45	7.45	7.45	7.45
	6.04	-0.62	6.04	5.28	6.04	5.90	6.04	6.04	6.04	6.04
	6.05	0.14	6.05	5.44	6.05	6.24	6.05	6.05	6.05	6.05
	6.05	-0.90	6.05	5.98	6.05	6.54	6.05	6.05	6.05	6.05
	6.06	-2.86	6.06	5.94	6.06	6.55	6.06	6.06	6.06	6.06
	6.07	-5.38	6.07	5.52	6.07	6.68	6.07	6.07	6.07	6.07
	6.07	-4.21	6.07	5.91	6.07	6.60	6.07	6.07	6.07	6.07
	6.08	-3.63	6.08	6.08	6.08	6.49	6.08	6.08	6.08	6.08
	6.09	-5.09	6.09	5.70	6.09	6.37	6.09	6.09	6.09	6.09
	6.09	-5.79	6.09	5.38	6.09	6.27	6.09	6.09	6.09	6.09
	6.10	-5.46	6.10	5.03	6.10	6.19	6.10	6.10	6.10	6.10
	6.10	-2.05	6.10	5.00	6.10	5.90	6.10	6.10	6.10	6.10
	6.11	0.86	6.11	5.26	6.11	5.76	6.11	6.11	6.11	6.11
	6.12	2.38	6.12	5.28	6.12	5.93	6.12	6.12	6.12	6.12
	6.12	2.48	6.12	4.96	6.12	6.32	6.12	6.12	6.12	6.12
	6.13	2.94	6.13	4.80	6.13	5.97	6.13	6.13	6.13	6.13
	6.13	3.33	6.13	4.84	6.13	5.54	6.13	6.13	6.13	6.13
	6.14	2.96	6.14	4.61	6.14	5.60	6.14	6.14	6.14	6.14
	6.15	3.06	6.15	4.53	6.15	6.02	6.15	6.15	6.15	6.15
	6.15	3.04	6.15	4.85	6.15		6.15	6.15	6.15	6.15



- General Notes :
- 1) unless otherwise shown , all dimensions are in m.
 - 2) DHWL = Design High Water Level (+7.350mPWD)
 - 3) SHWL = Standard High Water Level (+5.810mPWD)
 - 4) SLWL = Standard Low Water Level (+1.430mPWD)
 - 5) MWL= Mean Water Level (+3.02mPWD)