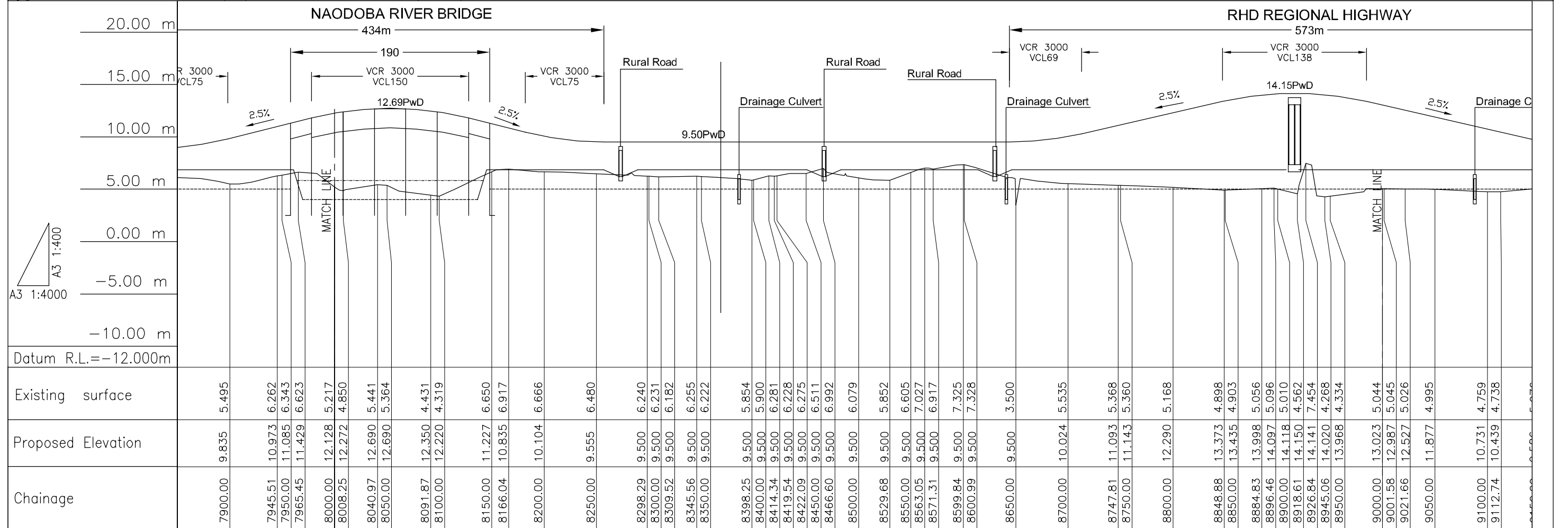
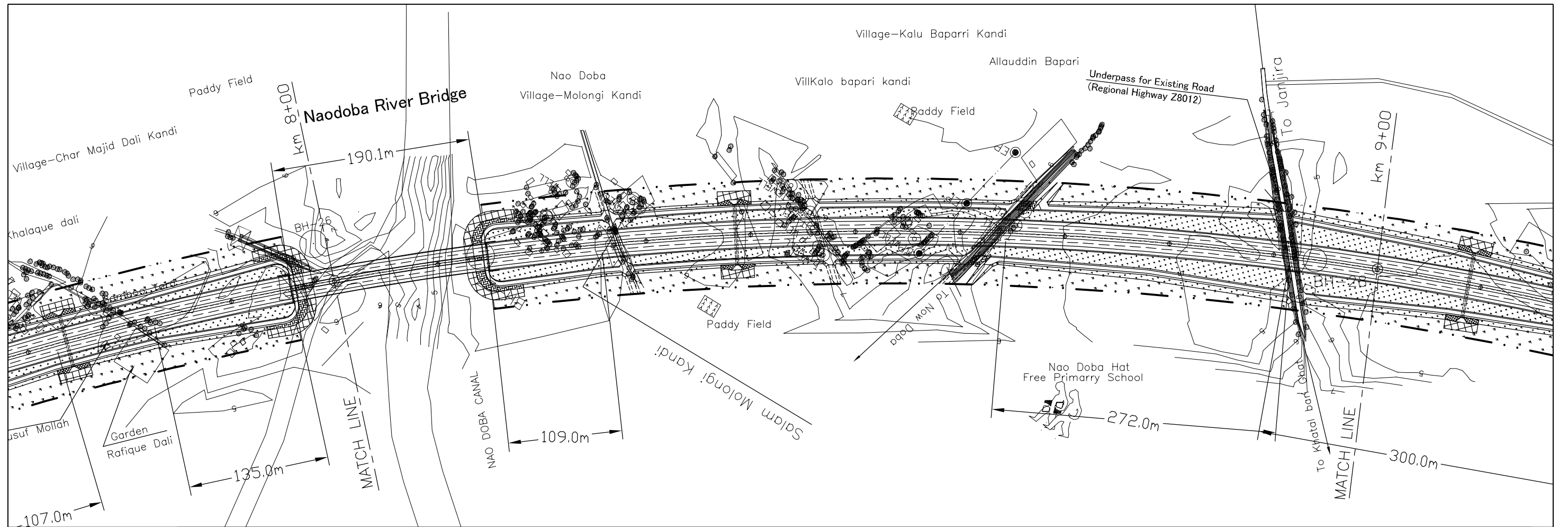


JAMUNA MULTIPURPOSE BRIDGE AUTHORITY THE PEOPLE REPUBLIC OF BANGLADESH	THE FEASIBILITY STUDY OF PADMA BRIDGE IN THE PEOPLE'S REPUBLIC OF BANGLADESH	JAPAN INTERNATIONAL COOPERATION AGENCY (JICA) NIPPON KOEI CO. LTD IN ASSOCIATION WITH CONSTRUCTION PROJECT CONSULTANTS, INC	TITLE	DATE:	SHEET NO.
			Plan and Longitudinal Section of Road Alignment (at Janjira) Scale: Hor= 1:4000 Ver= 1:400	MARCH-2005	PDM FS B9



JAMUNA MULTIPURPOSE BRIDGE AUTHORITY
THE PEOPLE REPUBLIC OF BANGLADESH

THE FEASIBILITY STUDY OF PADMA BRIDGE
IN THE PEOPLE'S REPUBLIC OF BANGLADESH

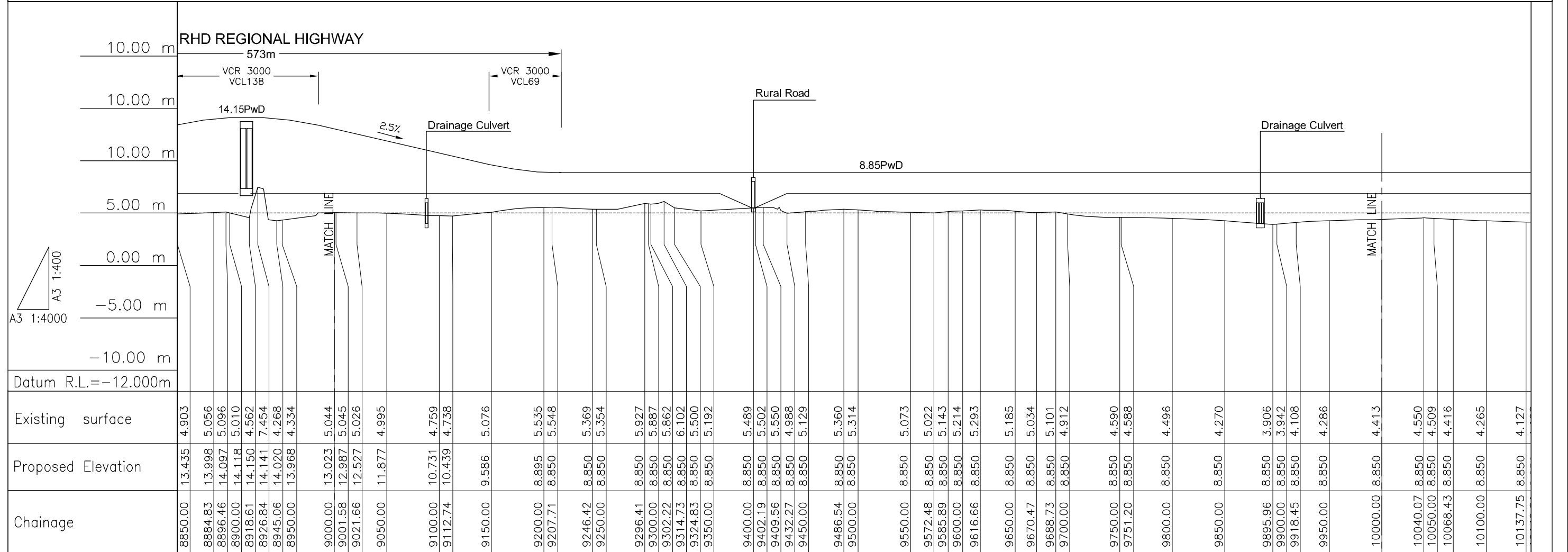
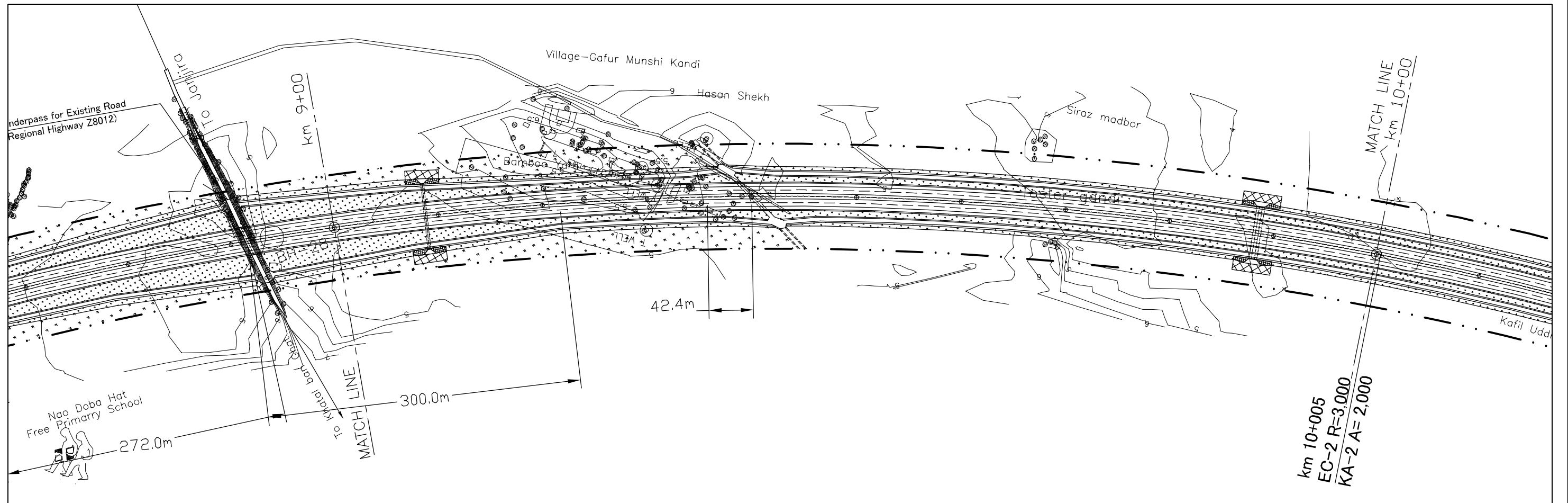


JAPAN INTERNATIONAL COOPERATION AGENCY (JICA)
NIPPON KOEI CO. LTD
IN ASSOCIATION WITH
CONSTRUCTION PROJECT CONSULTANTS, INC

TITLE
Plan and Longitudinal Section
of Road Alignment (at Janjira)
Scale: Hor= 1:4000
Ver= 1:400

DATE:
MARCH-2005

SHEET NO.
PDM FS B10



JAMUNA MULTIPURPOSE BRIDGE AUTHORITY
THE PEOPLE REPUBLIC OF BANGLADESH

THE FEASIBILITY STUDY OF PADMA BRIDGE
IN THE PEOPLE'S REPUBLIC OF BANGLADESH

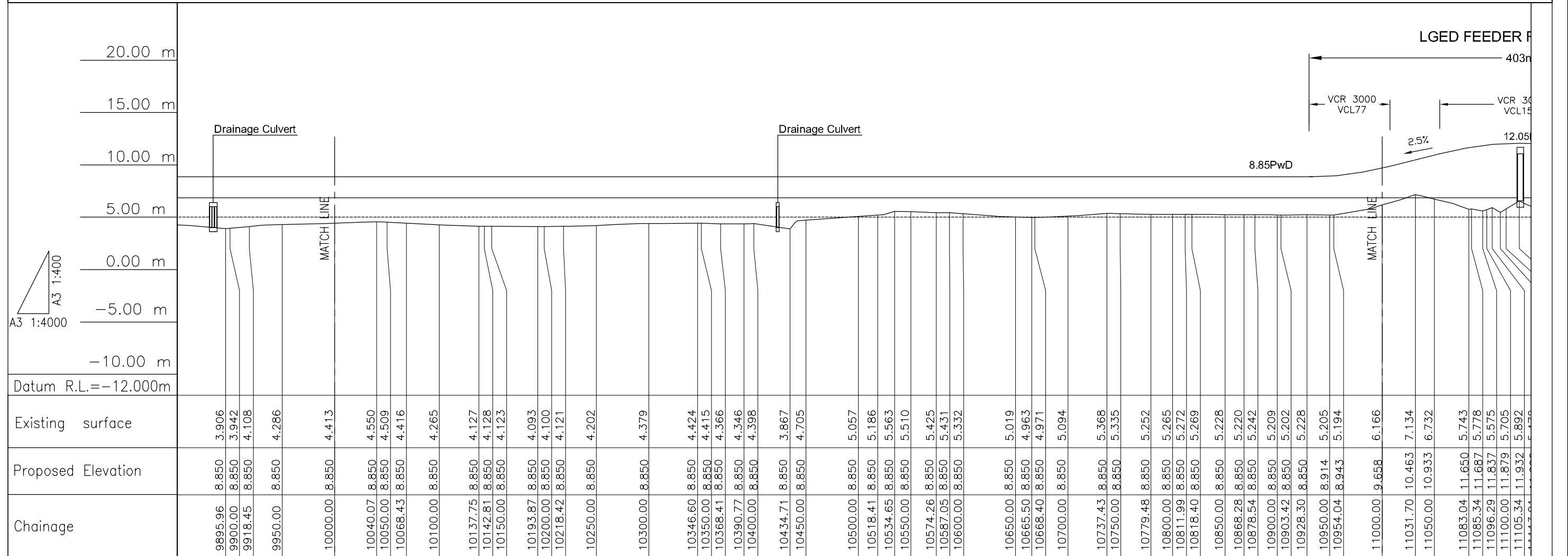
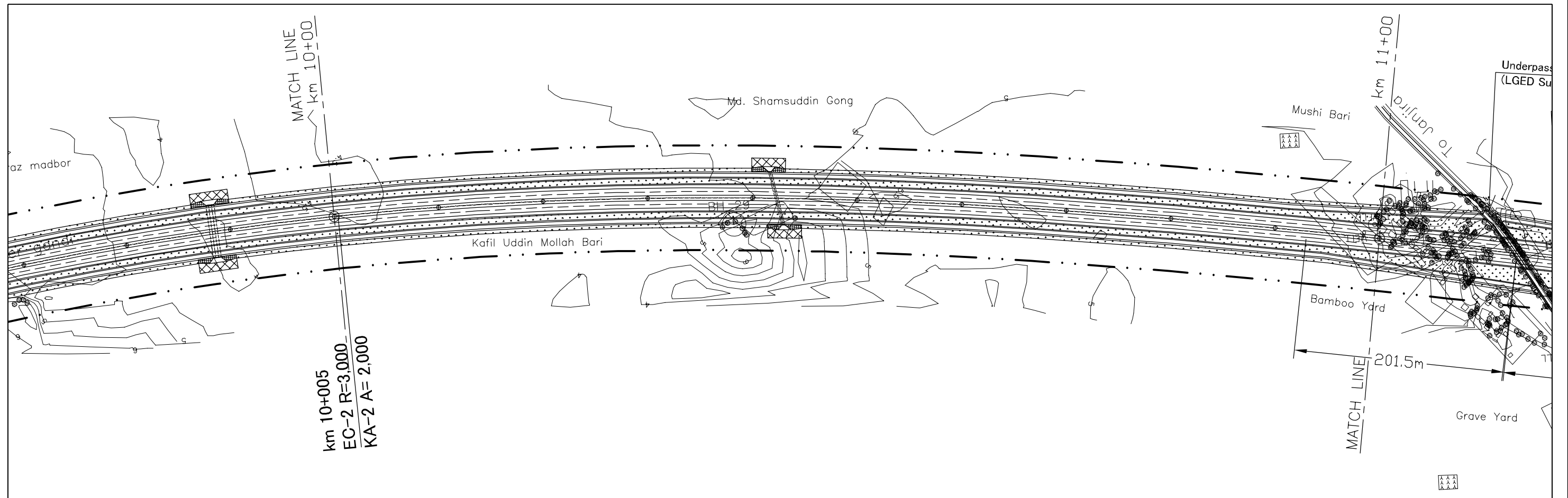


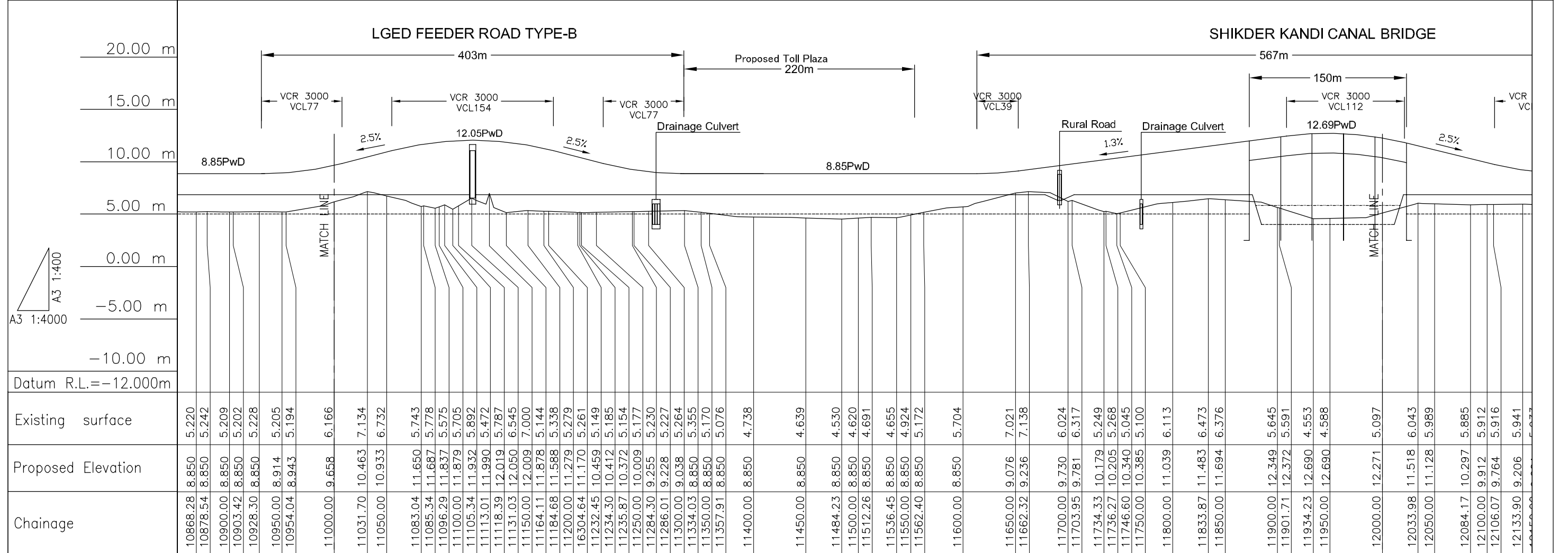
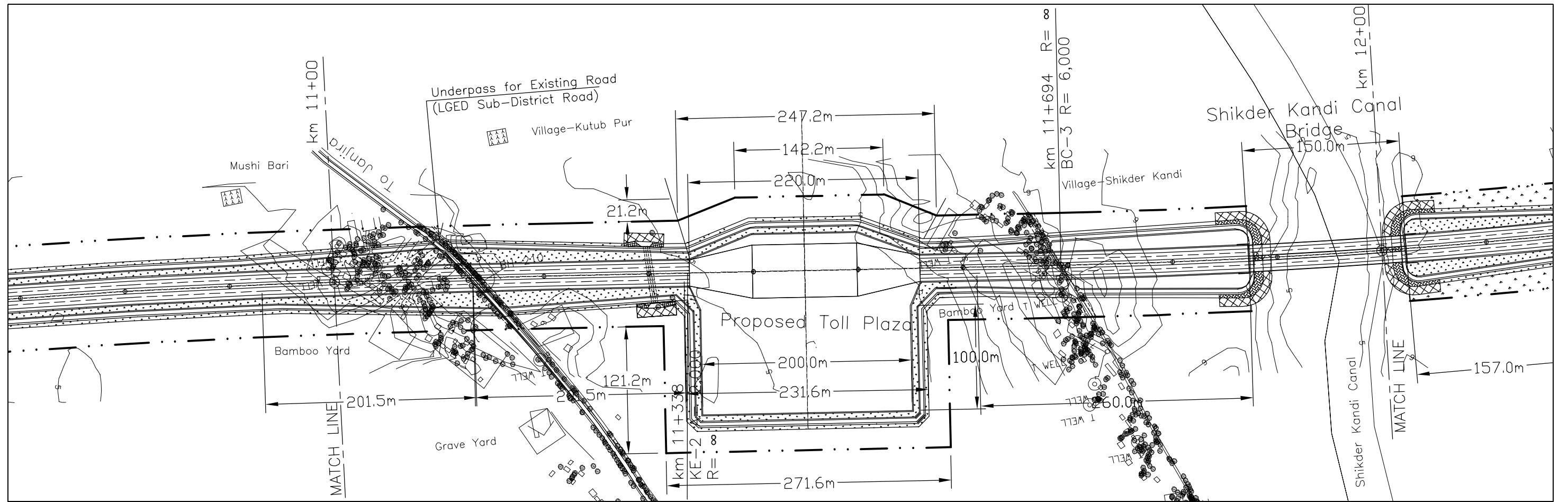
JAPAN INTERNATIONAL COOPERATION AGENCY (JICA)
NIPPON KOEI CO. LTD
IN ASSOCIATION WITH
CONSTRUCTION PROJECT CONSULTANTS, INC

TITLE
Plan and Longitudinal Section
of Road Alignment (at Janjira)
Scale: Hor= 1:4000
Ver= 1:400

DATE:
MARCH-2005

SHEET NO.
PDM FS B11





JAMUNA MULTIPURPOSE BRIDGE AUTHORITY
THE PEOPLE REPUBLIC OF BANGLADESH

THE FEASIBILITY STUDY OF PADMA BRIDGE
IN THE PEOPLE'S REPUBLIC OF BANGLADESH



JAPAN INTERNATIONAL COOPERATION AGENCY (JICA)
NIPPON KOEI CO. LTD
IN ASSOCIATION WITH
CONSTRUCTION PROJECT CONSULTANTS, INC

TITLE
Plan and Longitudinal Section
of Road Alignment (at Janjira)
Scale: Hor= 1:4000
Ver= 1:400

DATE:
MARCH-2005

SHEET NO.
PDM FS B13(1)

