



14+700

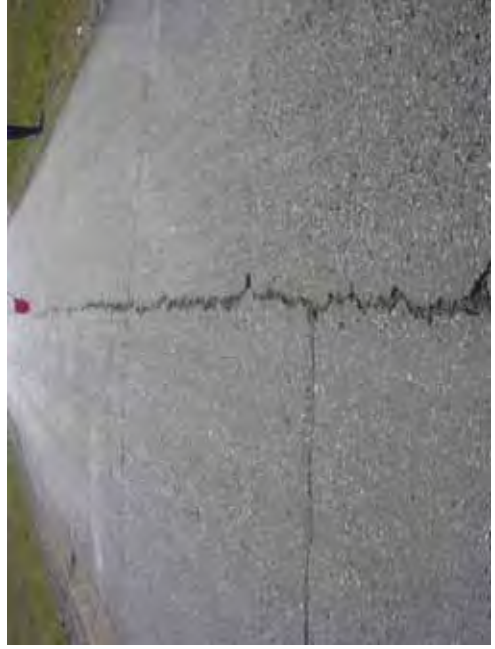
COMMENT	Volume of crackle: less Width of crackle: 05-20mm 342 / 2800 * 100 = 12.21%	Volume of crackle: less Width of crackle: 05-20mm 329 / 2800 * 100 = 11.75%	Volume of crackle: less Width of crackle: 05-25m 302 / 2800 * 100 = 10.79%	Volume of crackle: less Width of crackle: 05-30mm 288 / 2800 * 100 = 10.29%
SUBJECTIVE EVALUATION	4	4	4	4
OBJECTIVE EVALUATION	b, d	b	b	b
TYPE OF PAVEMENT REHABILITATION	C	C	C	C



DSC01218



DSC01219

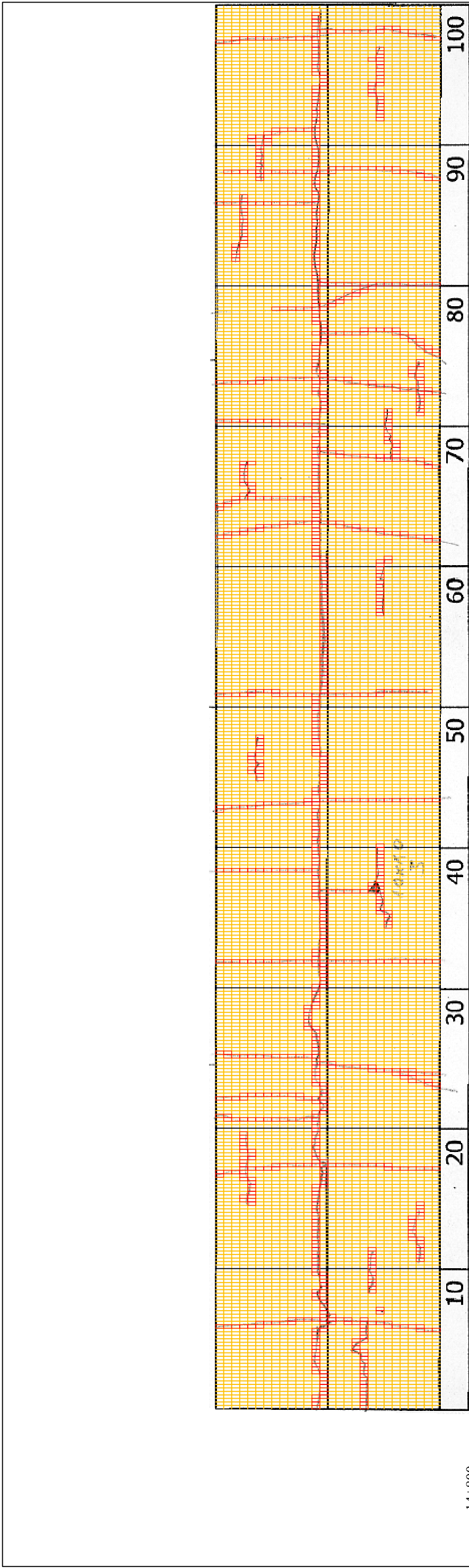


DSC01220

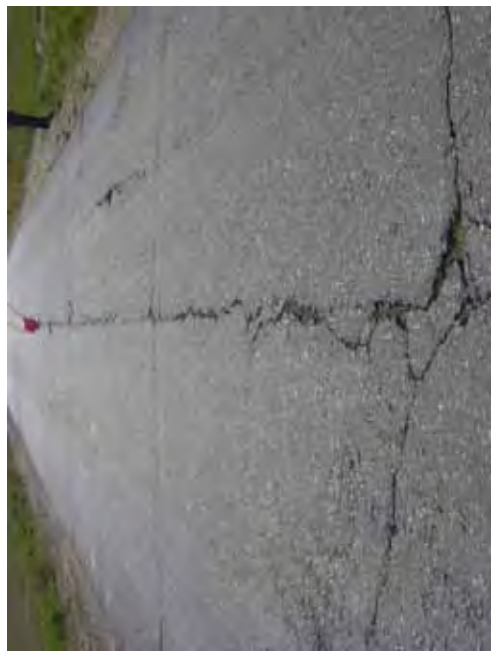


DSC01221

THE BASIC DESIGN STUDY ON CONSTRUCTION OF EASTERN ARTERIAL ROAD IN MONGOLIA	
JAPAN INTERNATIONAL COOPERATION AGENCY (JICA)	DEPARTMENT OF ROADS, MINISTRY OF INFRASTRUCTURE, THE GOVERNMENT OF MONGOLIA
PACIFIC CONSULTANTS INTERNATIONAL JAPAN OVERSEAS CONSULTANTS	
Drawing title	Scale
14800-14900	
No.	No.
	D-146



14+800	10	20	30	40	50	60	70	80	90	100
COMMENT	Volume of crackle: less Width of crackle: 05-35mm 317 / 2800 * 100 = 11.32%									
SUBJECTIVE EVALUATION	4									
OBJECTIVE EVALUATION	b, d									
TYPE OF PAVEMENT REHABILITATION	C									
	Volume of crackle: less Width of crackle: 05-40mm 241 / 2800 * 100 = %									
	4									
	b, c, d									
	C									
	Volume of crackle: less Width of crackle: 05-30mm 316 / 2800 * 100 = 11.29%									
	4									
	b									
	C									
	Volume of crackle: less Width of crackle: 05-40mm 299 / 2800 * 100 = 10.68%									
	4									
	b									
	C									



DSC01222

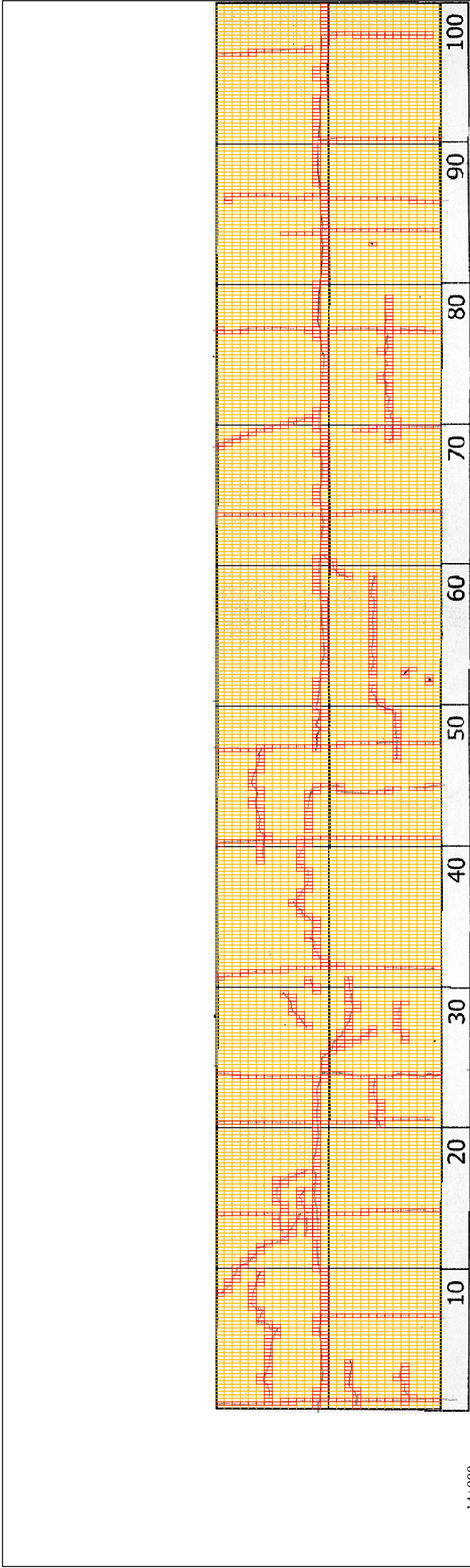
DSC01223

DSC01224

DSC01225

THE BASIC DESIGN STUDY ON CONSTRUCTION OF EASTERN ARTERIAL ROAD IN MONGOLIA

JAPAN INTERNATIONAL COOPERATION AGENCY (JICA)		DEPARTMENT OF ROADS,	
PACIFIC CONSULTANTS INTERNATIONAL		MINISTRY OF INFRASTRUCTURE,	
JAPAN OVERSEAS CONSULTANTS		THE GOVERNMENT OF MONGOLIA	
Drawing title		Scale	
14900-15000		No.	
		D-147	



14+900	Volume of crackle: less Width of crackle: 05-20mm 401 / 2800 x 100 = 14.32%	Volume of crackle: less Width of crackle: 05-30mm 318 / 2800 x 100 = 11.36%	Volume of crackle: less Width of crackle: 05-30mm 254 / 2800 x 100 = 9.07%	Volume of crackle: less Width of crackle: 05-20mm 267 / 2800 x 100 = 9.54%
COMMENT				
SUBJECTIVE EVALUATION	4	4	4	4
OBJECTIVE EVALUATION	b, d	b, d	b	b, d
TYPE OF PAVEMENT REHABILITATION	C	C	C	C



DSC01226



DSC01227

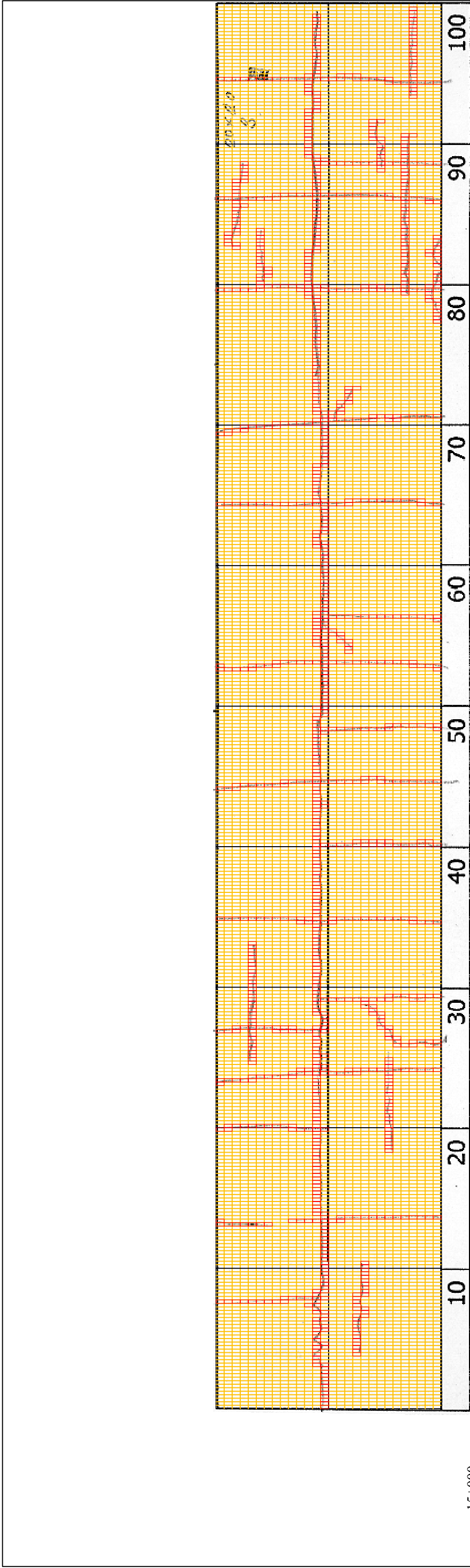


DSC01228



DSC01229

THE BASIC DESIGN STUDY ON CONSTRUCTION OF EASTERN ARTERIAL ROAD IN MONGOLIA	
JAPAN INTERNATIONAL COOPERATION AGENCY (JICA)	DEPARTMENT OF ROADS, MINISTRY OF INFRASTRUCTURE, THE GOVERNMENT OF MONGOLIA
PACIFIC CONSULTANTS INTERNATIONAL JAPAN OVERSEAS CONSULTANTS	
Drawing title	Scale
15000-15100	
No.	No.
	D-148



15+000

COMMENT	Volume of crackle: less Width of crackle: 05-30mm 260 / 2800 x 100 = 9.29%	Volume of crackle: less Width of crackle: 05-20mm 246 / 2800 x 100 = 8.79%	Volume of crackle: less Width of crackle: 05-30mm 371 / 2800 x 100 = 13.25%
SUBJECTIVE EVALUATION	3	3	3
OBJECTIVE EVALUATION	b, d	b	b, c, d
TYPE OF PAVEMENT REHABILITATION	C	C	C



DSC01230



DSC01231



DSC01232



DSC01233

THE BASIC DESIGN STUDY ON CONSTRUCTION OF EASTERN ARTERIAL ROAD IN MONGOLIA

JAPAN INTERNATIONAL COOPERATION AGENCY (JICA)

DEPARTMENT OF ROADS,
MINISTRY OF INFRASTRUCTURE,
THE GOVERNMENT OF MONGOLIA

PACIFIC CONSULTANTS INTERNATIONAL
JAPAN OVERSEAS CONSULTANTS

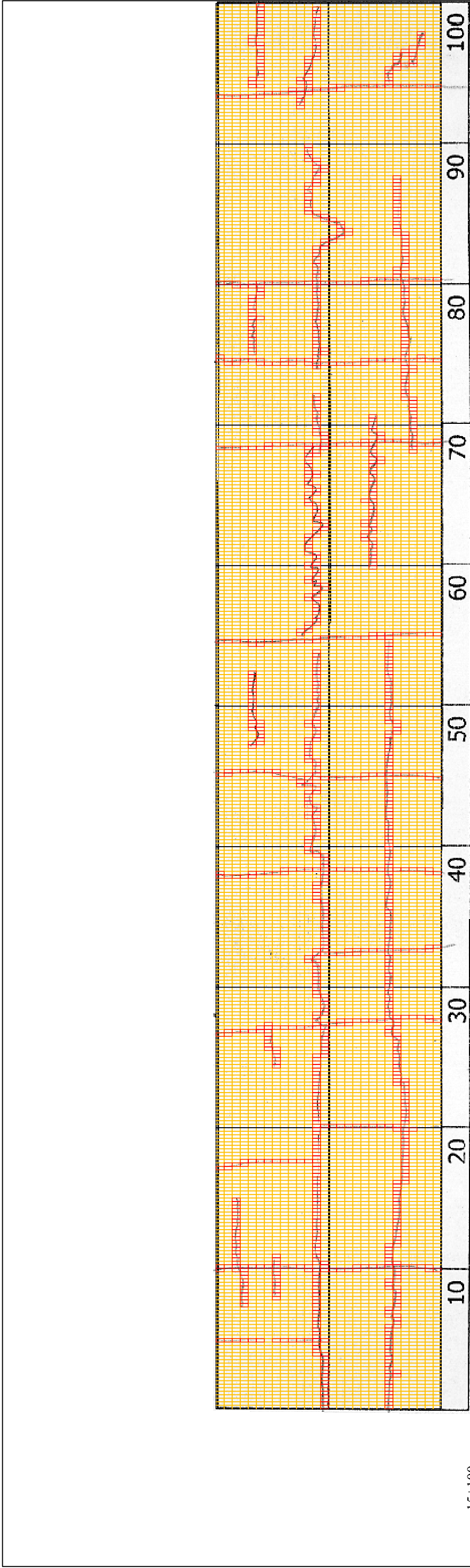
Drawing title

15100-15200

No.

D-149

Scale



15+100

COMMENT	Volume of crackle: less Width of crackle: 05-40mm 332 / 2800 x 100 = 11.86%	Volume of crackle: less Width of crackle: 05-50mm 364 / 2800 x 100 = 13.00%	Volume of crackle: less Width of crackle: 05-20mm 322 / 2800 x 100 = 11.50%	Volume of crackle: less Width of crackle: 05-30mm 296 / 2800 x 100 = 10.57%
SUBJECTIVE EVALUATION	4	4	4	4
OBJECTIVE EVALUATION	b, d	b, d	b, d	b, d
TYPE OF PAVEMENT REHABILITATION	C	C	C	C



DSC01234



DSC01235



DSC01236



DSC01237

THE BASIC DESIGN STUDY ON CONSTRUCTION OF EASTERN ARTERIAL ROAD IN MONGOLIA

JAPAN INTERNATIONAL COOPERATION AGENCY (JICA)

DEPARTMENT OF ROADS,
MINISTRY OF INFRASTRUCTURE,
THE GOVERNMENT OF MONGOLIA

PACIFIC CONSULTANTS INTERNATIONAL
JAPAN OVERSEAS CONSULTANTS

Drawing title

152004-15300

No.

D-150

Scale