

14+200	Volume of crackle: medium Width of crackle: 05-80mm There are the most crackle in central axis of the road. 391 / 2800 * 100 = 13.96%	Volume of crackle: medium Width of crackle: 05-60mm There are the most crackle in central axis of the road. 225 / 2800 * 100 = 8.04%	Volume of crackle: less Width of crackle: 05-20mm 241 / 2800 * 100 = 8.61%	Volume of crackle: less Width of crackle: 05-20mm 239 / 2800 * 100 = 8.54%
SUBJECTIVE EVALUATION	4	4	4	4
OBJECTIVE EVALUATION	b, c, d	b, c, d	b, c, d	b
TYPE OF PAVEMENT REHABILITATION	C	C	C	C



DSC01196

DSC01197

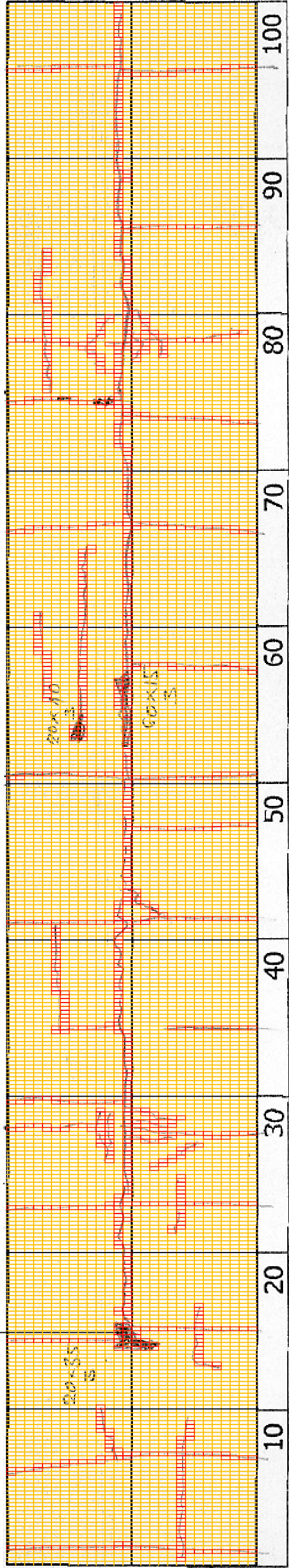
DSC01198

DSC01199

THE BASIC DESIGN STUDY ON CONSTRUCTION OF EASTERN ARTERIAL ROAD IN MONGOLIA

JAPAN INTERNATIONAL COOPERATION AGENCY (JICA)	DEPARTMENT OF ROADS, MINISTRY OF INFRASTRUCTURE, THE GOVERNMENT OF MONGOLIA
PACIFIC CONSULTANTS INTERNATIONAL JAPAN OVERSEAS CONSULTANTS	
Drawing title 14300-14400	
Scale	
No. D-141	

DSC01201



14+300

COMMENT	Volume of crackle: less Width of crackle: 05-20mm There is a pothole in + 14417 metre. (200*350*30mm) 268 / 2800 * 100 = 9.57%	Volume of crackle: medium Width of crackle: 05-50mm 308 / 2800 * 100 = 11.00%	Volume of crackle: medium Width of crackle: 05-30mm There is a pothole in + 14453 metre. (200*100*30mm) 305 / 2800 * 100 = 10.89%	Volume of crackle: less Width of crackle: 05-40mm 259 / 2800 * 100 = 9.25%
SUBJECTIVE EVALUATION	4	4	4	4
OBJECTIVE EVALUATION	b, c	b	b, c, d	b, c, d
TYPE OF PAVEMENT REHABILITATION	B	B	B	B



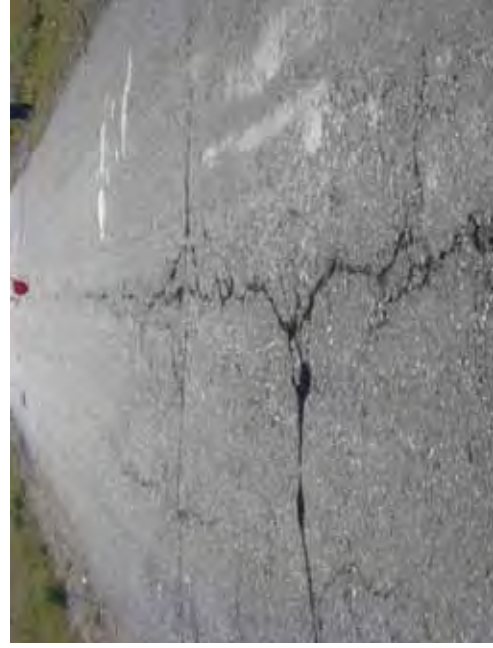
DSC01200



DSC01202



DSC01203



DSC01204

THE BASIC DESIGN STUDY ON CONSTRUCTION OF EASTERN ARTERIAL ROAD IN MONGOLIA

JAPAN INTERNATIONAL COOPERATION AGENCY (JICA)

MINISTRY OF INFRASTRUCTURE,
THE GOVERNMENT OF MONGOLIA

PACIFIC CONSULTANTS INTERNATIONAL
JAPAN OVERSEAS CONSULTANTS

Drawing title

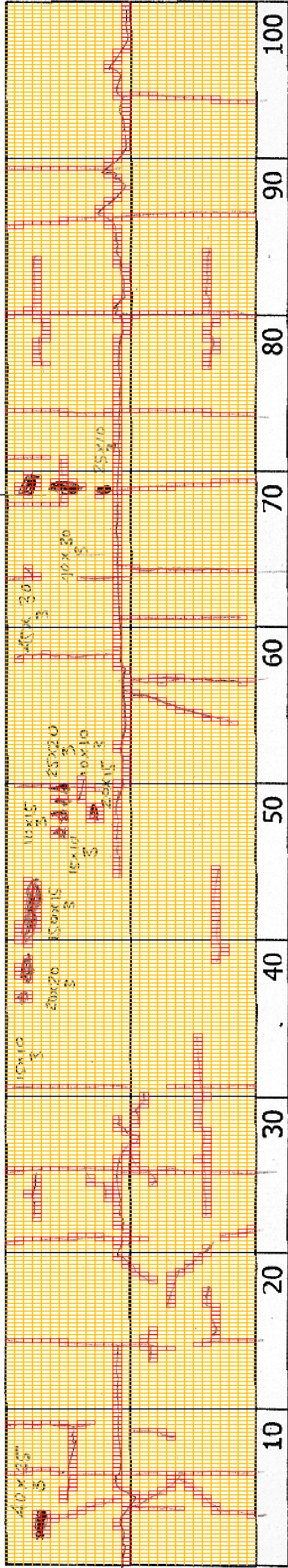
14400-14500

No.

D-142

Scale

DSC01208



14+400

COMMENT	Volume of crackle: medium Width of crackle: 05-60mm 362 / 2800 * 100 = 12.93%	Volume of crackle: less Width of crackle: 05-20mm There is a pothole in + 14541 metre. (15000*150*30mm) 279 / 2800 * 100 = 9.96%	Volume of crackle: less Width of crackle: 05-110mm There is a pothole in + 11570 metre. (250*100*30mm) There are the most crackle in central axis of the road. 302 / 2800 * 100 = 10.79%	Volume of crackle: less Width of crackle: 05-30mm 268 / 2800 * 100 = 9.57%
SUBJECTIVE EVALUATION	4	4	4	4
OBJECTIVE EVALUATION	b, c, d	b, c, d	b, c, d	b
TYPE OF PAVEMENT REHABILITATION	B	B	B	B



DSC01205



DSC01206



DSC01207



DSC01209

THE BASIC DESIGN STUDY ON CONSTRUCTION OF EASTERN ARTERIAL ROAD IN MONGOLIA

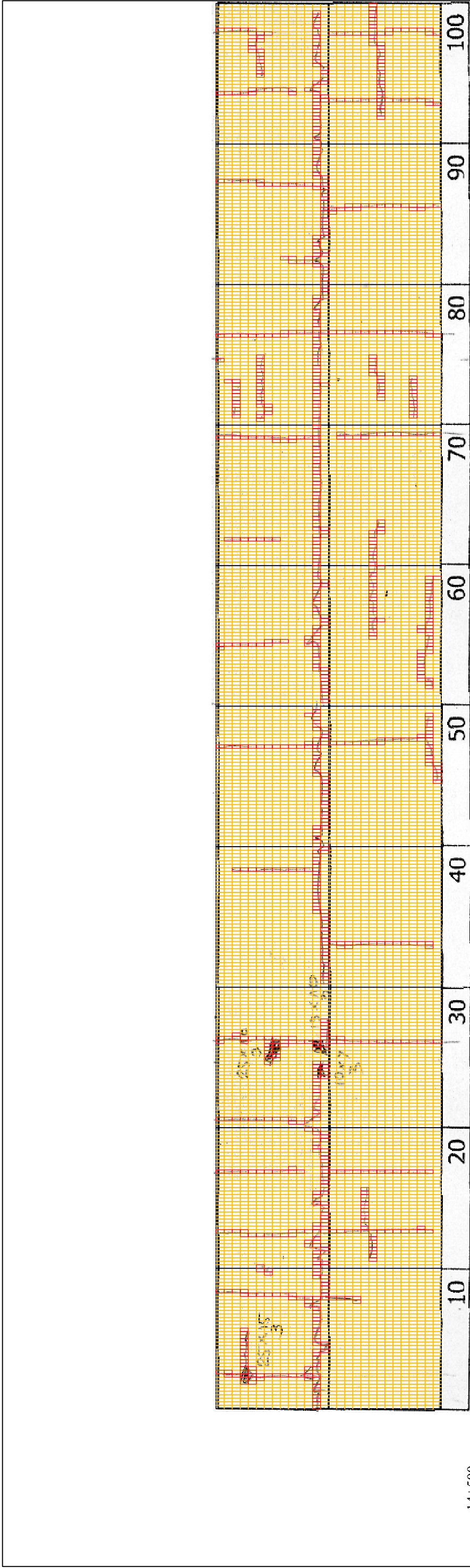
JAPAN INTERNATIONAL COOPERATION AGENCY (JICA)
MINISTRY OF INFRASTRUCTURE,
THE GOVERNMENT OF MONGOLIA

PACIFIC CONSULTANTS INTERNATIONAL
JAPAN OVERSEAS CONSULTANTS

Drawing title
14500-14600

No.
D-143

Scale



14+500

COMMENT	Volume of crackle: less Width of crackle: 05-60mm There are the most crackle in central axis of the road. 272 / 2800 * 100 = 9.71%	Volume of crackle: less Width of crackle: 05-60mm There is a pothole in + 14626 metre. (250*100*30mm) 218 / 2800 * 100 = 7.79%	Volume of crackle: less Width of crackle: 05-60mm 292 / 2800 * 100 = 10.43%	Volume of crackle: less Width of crackle: 05-30mm 275 / 2800 * 100 = 9.82%
SUBJECTIVE EVALUATION	4	4	4	4
OBJECTIVE EVALUATION	b, c, d	b, c, d	b, d	b, d
TYPE OF PAVEMENT REHABILITATION	B	B	B	B



DSC01210



DSC01211



DSC01212



DSC01213

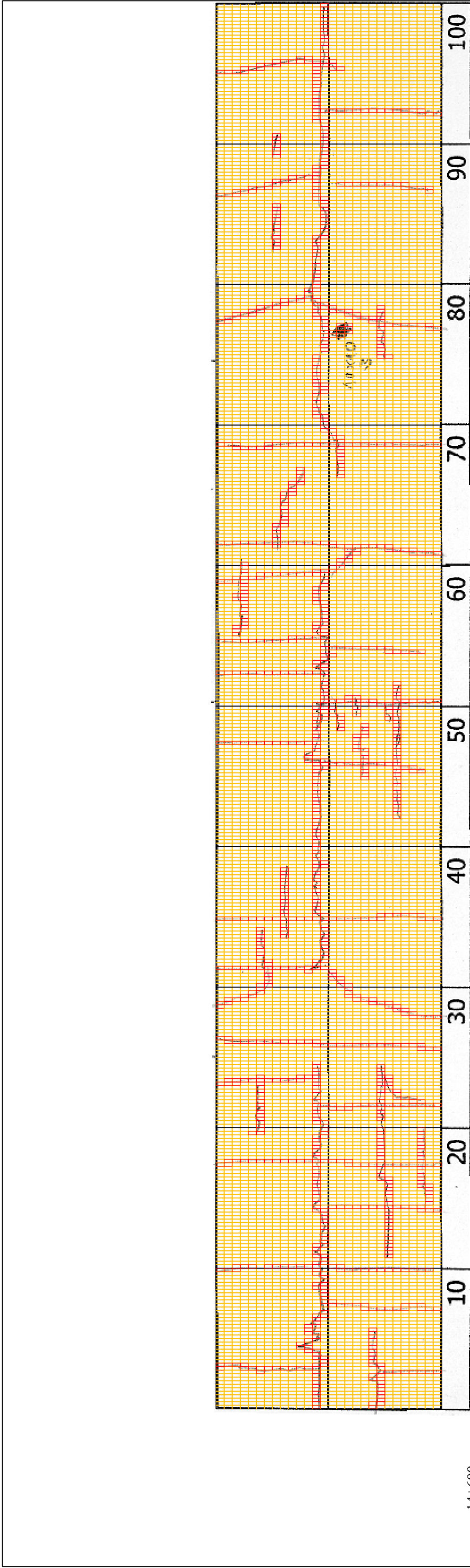
THE BASIC DESIGN STUDY ON CONSTRUCTION OF EASTERN ARTERIAL ROAD IN MONGOLIA

JAPAN INTERNATIONAL COOPERATION AGENCY (JICA)
MINISTRY OF INFRASTRUCTURE,
THE GOVERNMENT OF MONGOLIA

PACIFIC CONSULTANTS INTERNATIONAL
JAPAN OVERSEAS CONSULTANTS

Drawing title
14600-14700

Scale
No.
D-144



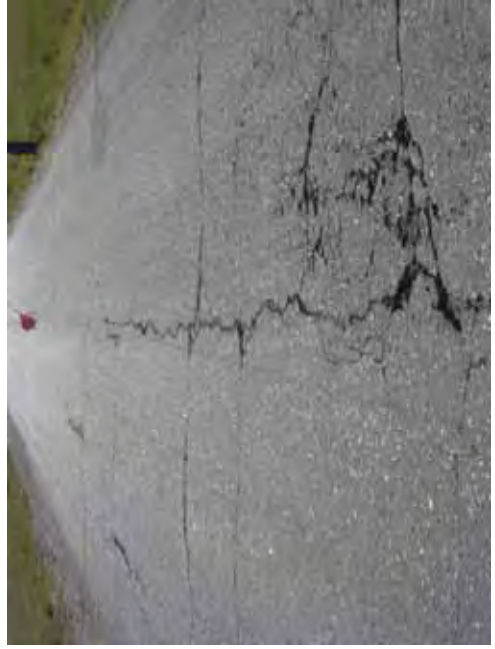
14+600	Volume of crackle: less Width of crackle: 05-20mm 390 / 2800 * 100 = 13.93%	Volume of crackle: less Width of crackle: 05-20mm 325 / 2800 * 100 = 11.61%	Volume of crackle: medium Width of crackle: 05-40mm 289 / 2800 * 100 = 10.32%	Volume of crackle: less Width of crackle: 05-30mm 257 / 2800 * 100 = 9.18%
COMMENT				
SUBJECTIVE EVALUATION	4	4	4	4
OBJECTIVE EVALUATION	b, d	b, d	b, d	b, c, d
TYPE OF PAVEMENT REHABILITATION	C	C	C	C



DSC01214



DSC01215



DSC01216



DSC01217

THE BASIC DESIGN STUDY ON CONSTRUCTION OF EASTERN ARTERIAL ROAD IN MONGOLIA	
JAPAN INTERNATIONAL COOPERATION AGENCY (JICA)	DEPARTMENT OF ROADS, MINISTRY OF INFRASTRUCTURE, THE GOVERNMENT OF MONGOLIA
PACIFIC CONSULTANTS INTERNATIONAL JAPAN OVERSEAS CONSULTANTS	Scale
Drawing title 14700-14800	No. D-145