

13+700

COMMENT	Volume of crackle: most Width of crackle: 05-70mm There are the most crackle in central axis of the road. 297 / 2800 * 100 = 10.61%	Volume of crackle: medium Width of crackle: 05-40mm 279 / 2800 * 100 = 9.96%	Volume of crackle: medium Width of crackle: 05-30mm 398 / 2800 * 100 = 14.21%
SUBJECTIVE EVALUATION	3	3	3
OBJECTIVE EVALUATION	b, c	b, c	b, c
TYPE OF PAVEMENT REHABILITATION	C	C	C



DSC01173



DSC01174



DSC01175



DSC01176

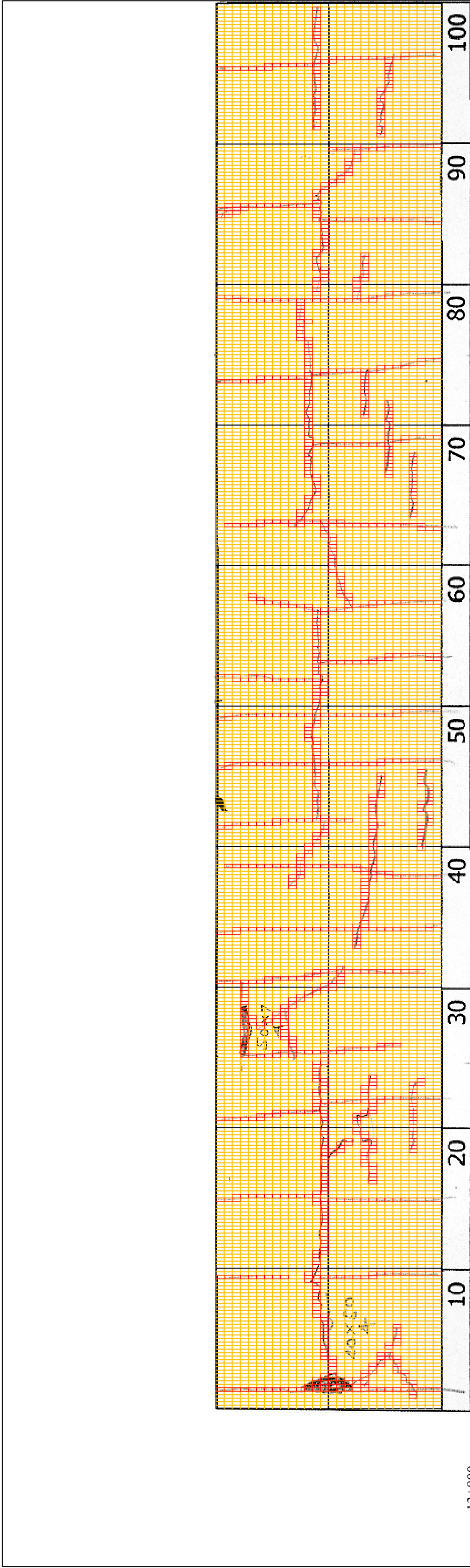
THE BASIC DESIGN STUDY ON CONSTRUCTION OF EASTERN ARTERIAL ROAD IN MONGOLIA

JAPAN INTERNATIONAL COOPERATION AGENCY (JICA)
MINISTRY OF INFRASTRUCTURE,
THE GOVERNMENT OF MONGOLIA

PACIFIC CONSULTANTS INTERNATIONAL
JAPAN OVERSEAS CONSULTANTS

Drawing title
13800-13900

Scale
No.
D-136



13+800

COMMENT	Volume of crackle: medium Width of crackle: 05-60mm There is a pothole in + 13901 metre. (400*500*40mm) 335 / 2800 * 100 = 11.96%	Volume of crackle: medium Width of crackle: 05-60mm 388 / 2800 * 100 = 13.86%	Volume of crackle: medium Width of crackle: 05-60mm 306 / 2800 * 100 = 10.93%	251 / 2800 * 100 = 8.96%
SUBJECTIVE EVALUATION	4	4	3	3
OBJECTIVE EVALUATION	b, c, d	b, c, d	b	b
TYPE OF PAVEMENT REHABILITATION	C	C	C	C



DSC01177



DSC01178



DSC01179



DSC01180

THE BASIC DESIGN STUDY ON CONSTRUCTION OF EASTERN ARTERIAL ROAD IN MONGOLIA

JAPAN INTERNATIONAL COOPERATION AGENCY (JICA)

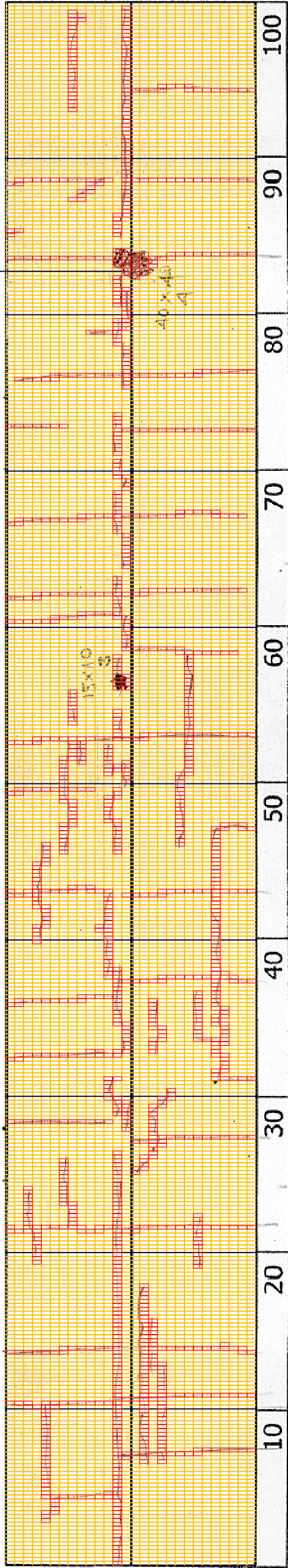
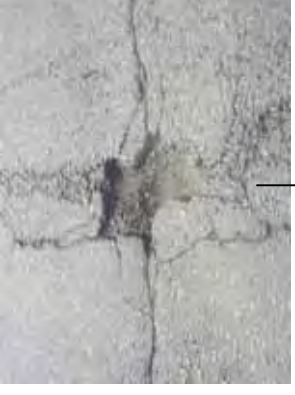
MINISTRY OF INFRASTRUCTURE,
THE GOVERNMENT OF MONGOLIA

PACIFIC CONSULTANTS INTERNATIONAL
JAPAN OVERSEAS CONSULTANTS

Drawing title
13900-14000

Scale
No.
D-137

DSC01184



13+900

COMMENT	Volume of crackle: medium Width of crackle: 05-50mm There is a pothole in + 14082 metre. (400*400*40mm) 288028000 ±0% = 9.36%	Volume of crackle: medium Width of crackle: 05-30mm 293 / 2800 * 100 = 10.46%	Volume of crackle: most Width of crackle: 05-30mm 414 / 2800 * 100 = 14.79 %	Volume of crackle: medium Width of crackle: 05-60mm There are the most crackle in central axis of the road. 371 / 2800 * 100 = 13.25%	Volume of crackle: medium Width of crackle: 05-50mm There is a pothole in + 14082 metre. (400*400*40mm) 288028000 ±0% = 9.36%
SUBJECTIVE EVALUATION	4	4	4	4	4
OBJECTIVE EVALUATION	b, d	b, c, d	b, d	b, d	b, d
TYPE OF PAVEMENT REHABILITATION	C	C	C	C	C



DSC01180



DSC01181

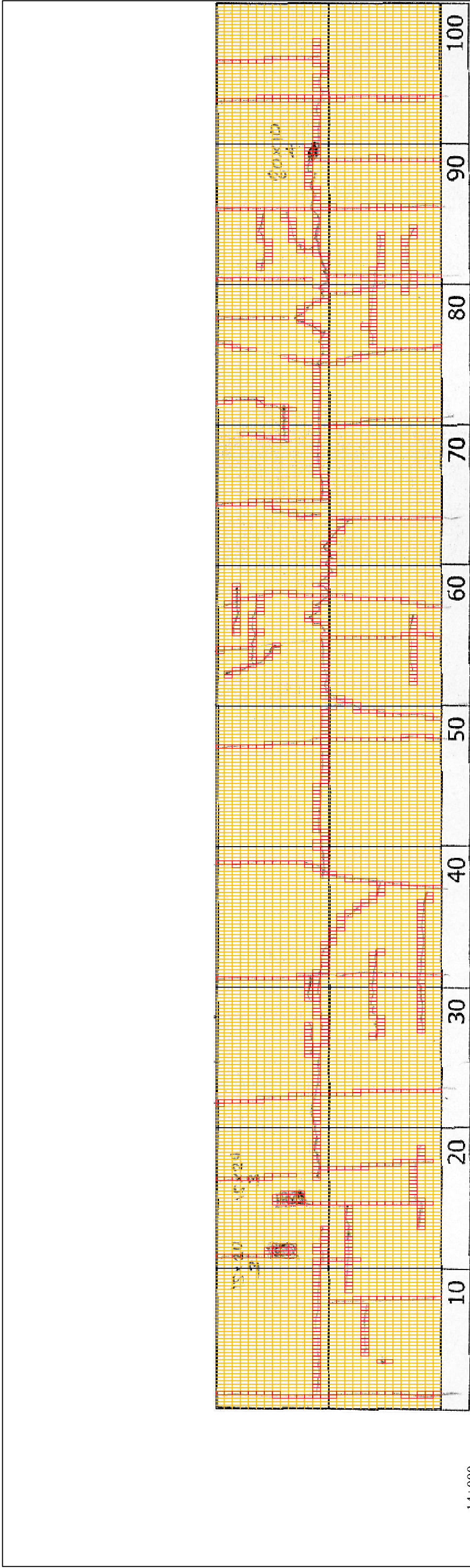


DSC01182



DSC01183

THE BASIC DESIGN STUDY ON CONSTRUCTION OF EASTERN ARTERIAL ROAD IN MONGOLIA	
JAPAN INTERNATIONAL COOPERATION AGENCY (JICA)	DEPARTMENT OF ROADS,
PACIFIC CONSULTANTS INTERNATIONAL JAPAN OVERSEAS CONSULTANTS	MINISTRY OF INFRASTRUCTURE, THE GOVERNMENT OF MONGOLIA
Drawing title 14000-14100	Scale
No. D-138	



14+000

COMMENT	Volume of crackle: medium Width of crackle: 05-50mm There is a pothole in + 14112metre. (150*200*30m) There is a pothole in + 14115 metre. (150*200*30m) 313 / 2800 * 100 = 11.18%	Volume of crackle: less Width of crackle: 05-30mm 305 / 2800 * 100 = 10.89%	Volume of crackle: medium Width of crackle: 05-30mm 337 / 2800 * 100 = 12.04%	Volume of crackle: most Width of crackle: 05-60mm There is a pothole in + 14189 metre. (300*100*40mm) 373 / 2800 * 100 = 13.32%
SUBJECTIVE EVALUATION	4	3	4	4
OBJECTIVE EVALUATION	b, c, d	b	b, d	b, c, d
TYPE OF PAVEMENT REHABILITATION	C	C	C	C



DSC01185



DSC01186



DSC01187



DSC01188

THE BASIC DESIGN STUDY ON CONSTRUCTION OF EASTERN ARTERIAL ROAD IN MONGOLIA

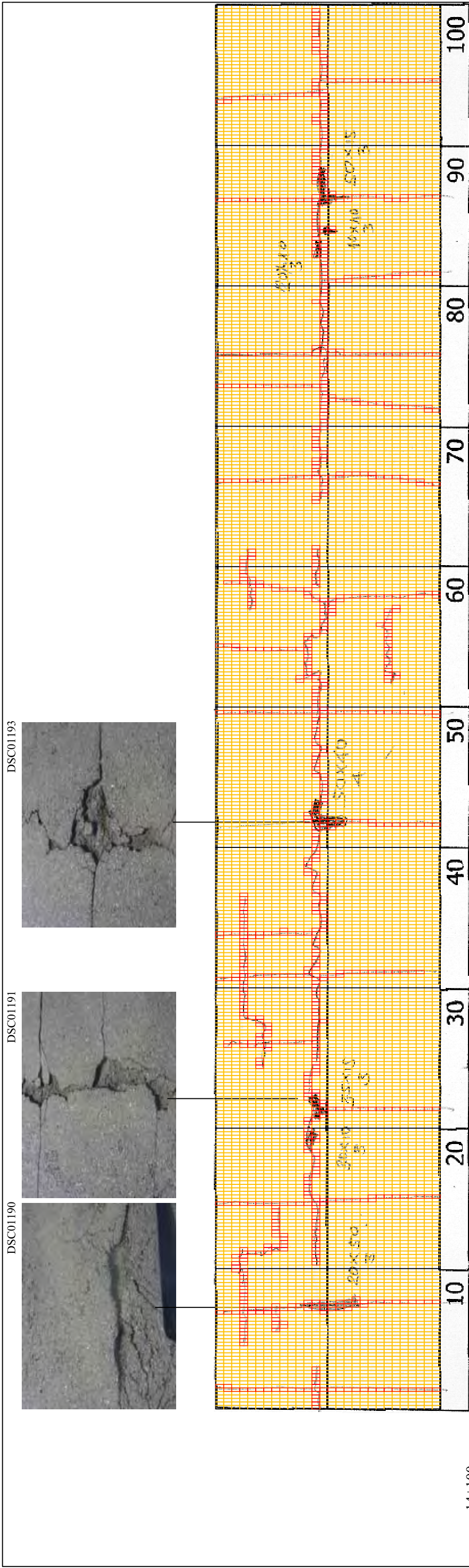
JAPAN INTERNATIONAL COOPERATION AGENCY (JICA)

MINISTRY OF INFRASTRUCTURE,
THE GOVERNMENT OF MONGOLIA

PACIFIC CONSULTANTS INTERNATIONAL
JAPAN OVERSEAS CONSULTANTS

Drawing title
14100-14200

Scale
No.
D-139



14+100	Volume of crackle: medium Width of crackle: 05-70mm There is a pothole in + 14208 metre. (200*500*30m) There is a pothole in + 14219 metre. (350*150*30m) 268 / 2800 * 100 = 9.57%	Volume of crackle: medium Width of crackle: 05-80mm There is a pothole in + 14241 metre. (500*400*40mm) 272 / 2800 * 100 = 9.71%	Volume of crackle: less Width of crackle: 05-50mm 254 / 2800 * 100 = 9.07%	Volume of crackle: medium Width of crackle: 05-50mm 231 / 2800 * 100 = 8.25%
SUBJECTIVE EVALUATION	4	4	4	4
OBJECTIVE EVALUATION	b, c, d	b, c, d	b, d	b, c, d
TYPE OF PAVEMENT REHABILITATION	C	C	C	C



DSC01189



DSC01192



DSC01194



DSC01195

THE BASIC DESIGN STUDY ON CONSTRUCTION OF EASTERN ARTERIAL ROAD IN MONGOLIA	
JAPAN INTERNATIONAL COOPERATION AGENCY (JICA)	DEPARTMENT OF ROADS, MINISTRY OF INFRASTRUCTURE, THE GOVERNMENT OF MONGOLIA
PACIFIC CONSULTANTS INTERNATIONAL JAPAN OVERSEAS CONSULTANTS	
Drawing title	Scale
14200-14300	
No.	No.
	D-140