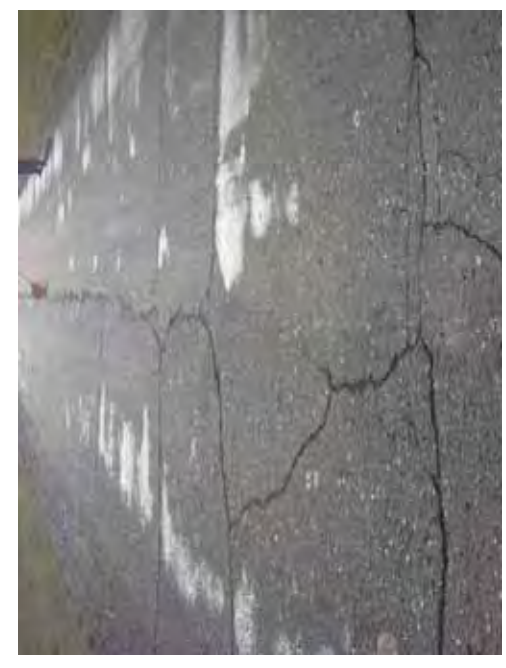


13+200

COMMENT	Volume of crackle: medium Width of crackle: 05-80mm There are the most crackle in central axis of the road. 315 / 2800 * 100 = 11.25%	Volume of crackle: less Width of crackle: 05-20mm 426 / 2800 * 100 = 15.21%	Volume of crackle: medium Width of crackle: 05-40mm There are the most crackle in central axis of the road. 402 / 2800 * 100 = 14.36%	Volume of crackle: medium Width of crackle: 05-70mm There are the most crackle in central axis of the road. 376 / 2800 * 100 = 13.43%
SUBJECTIVE EVALUATION	3	3	3	3
OBJECTIVE EVALUATION	b, c	b	b	b, c
TYPE OF PAVEMENT REHABILITATION	C	C	C	C



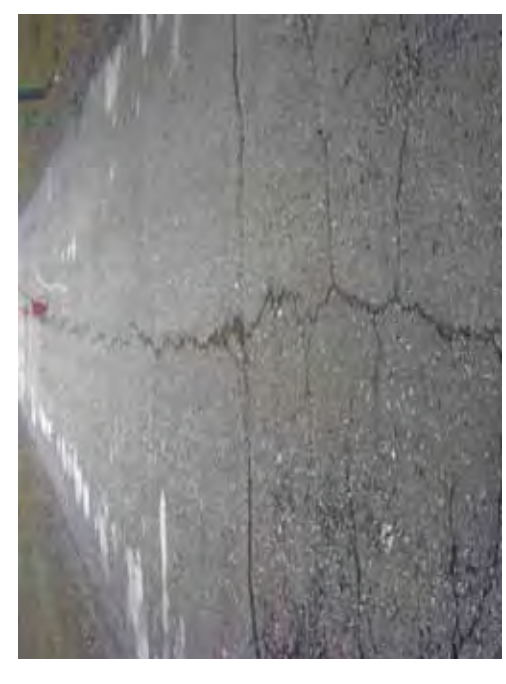
DSC01150



DSC01151



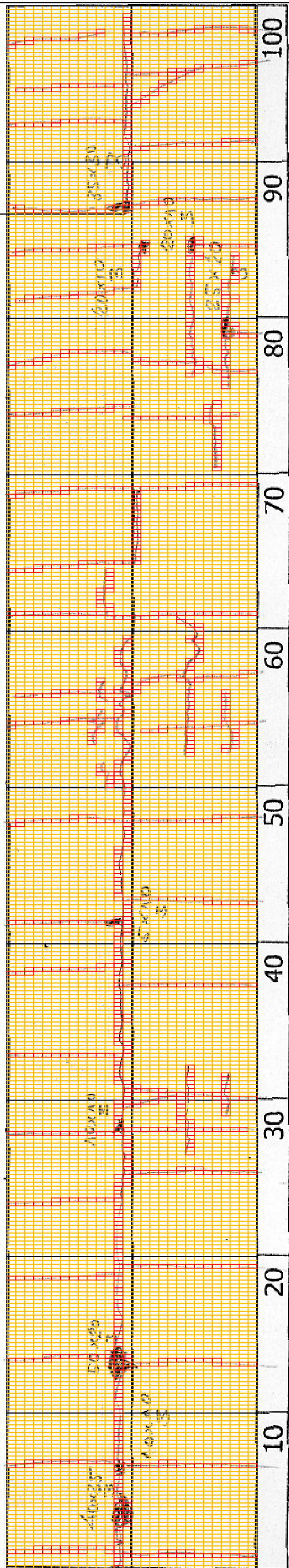
DSC01152



DSC01153

THE BASIC DESIGN STUDY ON CONSTRUCTION OF EASTERN ARTERIAL ROAD IN MONGOLIA	
JAPAN INTERNATIONAL COOPERATION AGENCY (JICA)	DEPARTMENT OF ROADS, MINISTRY OF INFRASTRUCTURE, THE GOVERNMENT OF MONGOLIA
PACIFIC CONSULTANTS INTERNATIONAL JAPAN OVERSEAS CONSULTANTS	
Drawing title 13300-13400	Scale No. D-131

DSC01158



13+300

COMMENT	Volume of crackle: medium Width of crackle: 05-60mm There is a pothole in + 13402 metre. (400*350*30mm) There is a pothole in + 13411 metre. (500*200*30mm) 255 / 2800 * 100 = 9.11%	Volume of crackle: medium Width of crackle: 05-50mm 316 / 2800 * 100 = 11.29%	Volume of crackle: most Width of crackle: 10-20mm 348 / 2800 * 100 = %	Volume of crackle: most Width of crackle: 05-50mm There is a pothole in + 13479 metre. (250*200*30mm) There is a pothole in + 13488 metre. (350*300*30mm) 363 / 2800 * 100 = 12.96%
SUBJECTIVE EVALUATION	4	4	4	4
OBJECTIVE EVALUATION	b, c, d	b, c, d	b, d	b, c, d
TYPE OF PAVEMENT REHABILITATION	C	C	C	C



DSC01154



DSC01155



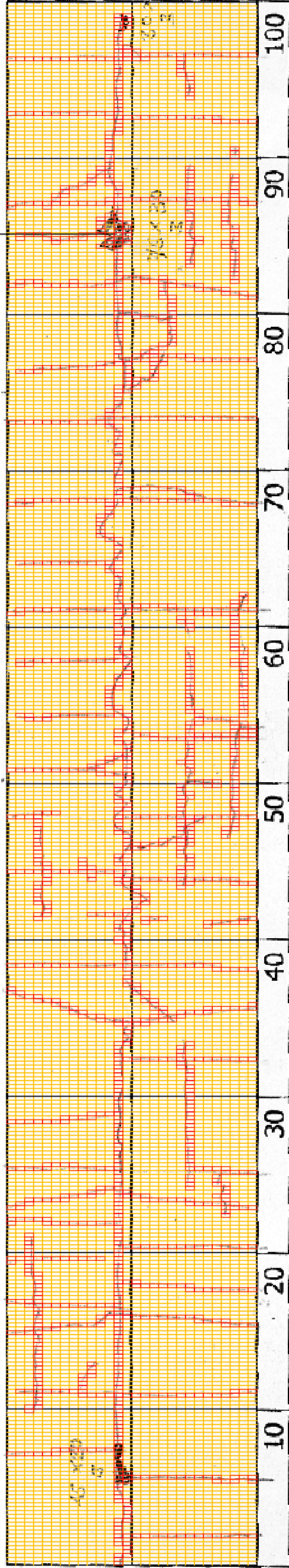
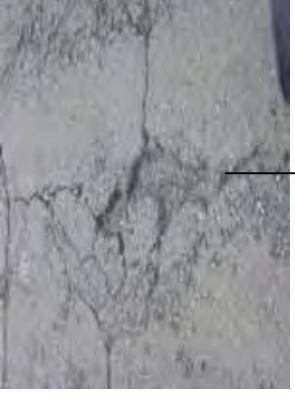
DSC01156



DSC01157

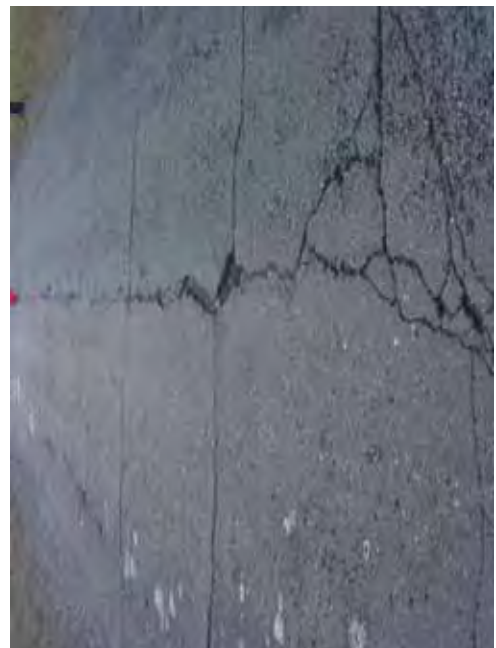
THE BASIC DESIGN STUDY ON CONSTRUCTION OF EASTERN ARTERIAL ROAD IN MONGOLIA	
JAPAN INTERNATIONAL COOPERATION AGENCY (JICA)	DEPARTMENT OF ROADS, MINISTRY OF INFRASTRUCTURE, THE GOVERNMENT OF MONGOLIA
PACIFIC CONSULTANTS INTERNATIONAL JAPAN OVERSEAS CONSULTANTS	Scale
Drawing title 13400-13500	No. D-132

DSC01163



13+400

COMMENT	Volume of crackle: most Width of crackle: 05-50mm There is a pothole in + 13506 metre. (450*200*30mm) 390 / 2800 * 100 = 13.93%	Volume of crackle: medium Width of crackle: 05-40mm 440 / 2800 * 100 = 15.71%	Volume of crackle: most Width of crackle: 05-50mm 406 / 2800 * 100 = 14.50%	Volume of crackle: most Width of crackle: 05-70mm There is a pothole in + 13587 metre. (750*300*30mm) 426 / 2800 * 100 = 15.21%
SUBJECTIVE EVALUATION	4	4	4	4
OBJECTIVE EVALUATION	b, c, d	b, d	b, d	b, c, d
TYPE OF PAVEMENT REHABILITATION	C	C	C	C



DSC01159



DSC01160



DSC01161



DSC01162

THE BASIC DESIGN STUDY ON CONSTRUCTION OF EASTERN ARTERIAL ROAD IN MONGOLIA

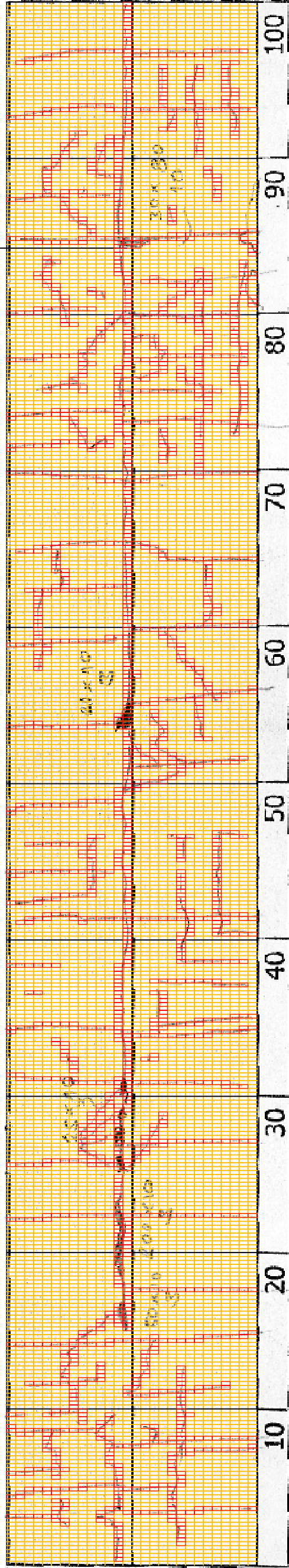
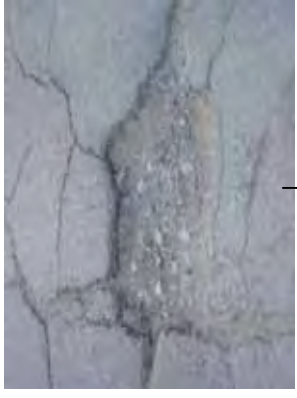
JAPAN INTERNATIONAL COOPERATION AGENCY (JICA)
MINISTRY OF INFRASTRUCTURE,
THE GOVERNMENT OF MONGOLIA

PACIFIC CONSULTANTS INTERNATIONAL
JAPAN OVERSEAS CONSULTANTS

Scale
1:3500-1:3600

No.
D-133

DSC01168

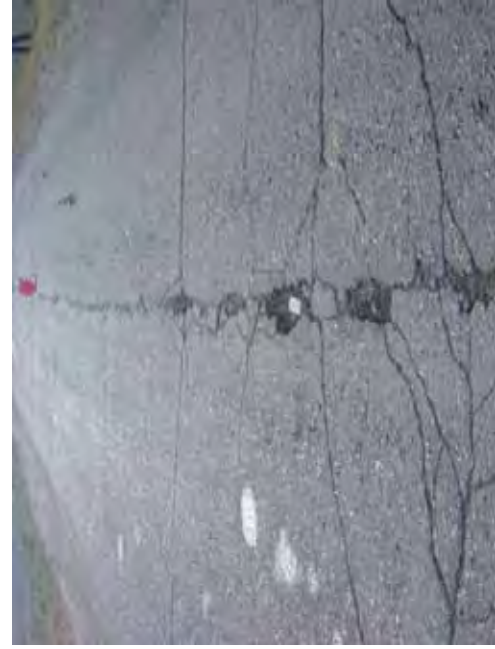


13+500

COMMENT		Volume of crackle: most Width of crackle: 05-60mm There are the most crackle in central axis of the road. 431 / 2800 * 100 = 15.39%	Volume of crackle: medium Width of crackle: 05-50mm There is a pothole between in the +13625 +13630 metre. 497 / 2800 * 100 = 17.75%	Volume of crackle: most Width of crackle: 05-80mm 491 / 2800 * 100 = 17.54%	Volume of crackle: medium Width of crackle: 05-100mm There is a pothole in + 13687 metre. (300*800*10mm) There are the most crackle in central axis of the road. 600 / 2800 * 100 = 21.43%
SUBJECTIVE EVALUATION	4	4	4	4	4
OBJECTIVE EVALUATION	b, c, d	b, c, d	b, c, d	b, c, d	b, c, d
TYPE OF PAVEMENT REHABILITATION	C	C	C	C	C



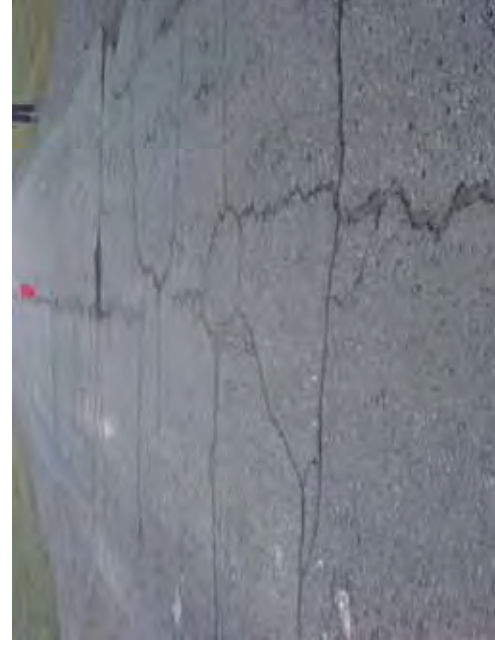
DSC01164



DSC01165



DSC01166



DSC01167

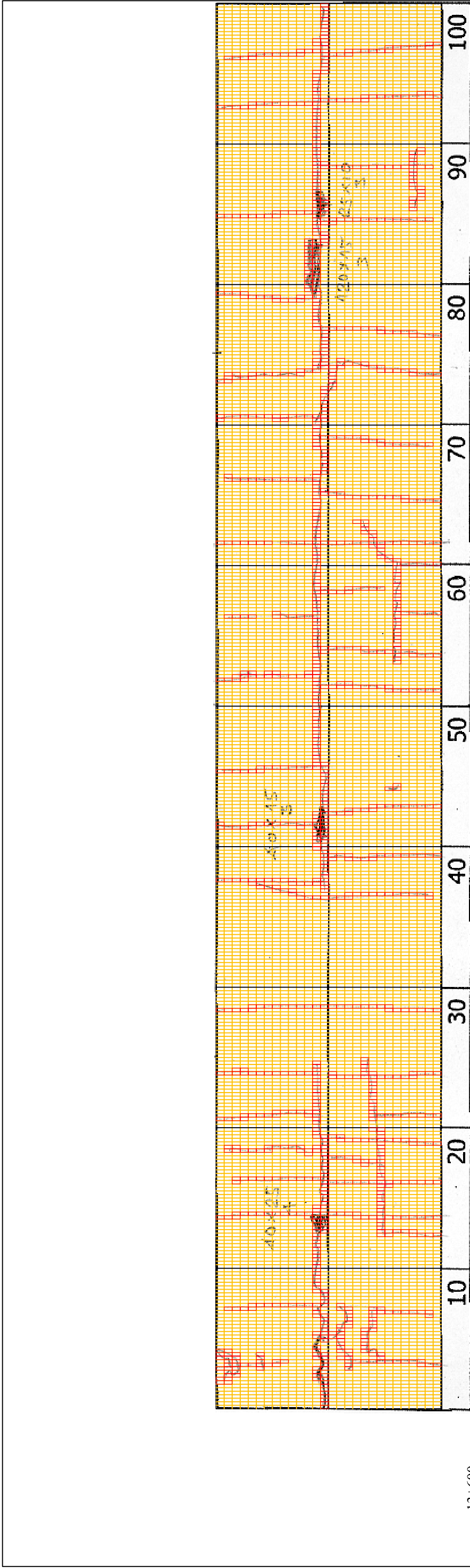
THE BASIC DESIGN STUDY ON CONSTRUCTION OF EASTERN ARTERIAL ROAD IN MONGOLIA

JAPAN INTERNATIONAL COOPERATION AGENCY (JICA)
MINISTRY OF INFRASTRUCTURE,
THE GOVERNMENT OF MONGOLIA

PACIFIC CONSULTANTS INTERNATIONAL
JAPAN OVERSEAS CONSULTANTS

Drawing title
13600-13700

No.
D-134



13+600

COMMENT	Volume of crackle: most Width of crackle: 05-100mm There are the most crackle in central axis of the road. 435 / 2800 * 100 = 15.54%	Volume of crackle: medium Width of crackle: 05-50mm 203 / 2800 * 100 = 7.25%	Volume of crackle: most Width of crackle: 05-30mm 361 / 2800 * 100 = 12.89%	Volume of crackle: medium Width of crackle: 05-60mm There is a pothole in + 13779 metre. (1200*150*30mm) There are the most crackle in central axis of the road. 284 / 2800 * 100 = 10.14%
SUBJECTIVE EVALUATION	3	3	3	3
OBJECTIVE EVALUATION	b, c	b, c	b	b, c
TYPE OF PAVEMENT REHABILITATION	C	C	C	C



DSC01169



DSC01170



DSC01171



DSC01172

THE BASIC DESIGN STUDY ON CONSTRUCTION OF EASTERN ARTERIAL ROAD IN MONGOLIA	
JAPAN INTERNATIONAL COOPERATION AGENCY (JICA)	DEPARTMENT OF ROADS,
PACIFIC CONSULTANTS INTERNATIONAL JAPAN OVERSEAS CONSULTANTS	MINISTRY OF INFRASTRUCTURE, THE GOVERNMENT OF MONGOLIA
Drawing title	Scale
13700-13800	
No.	No.
	D-135