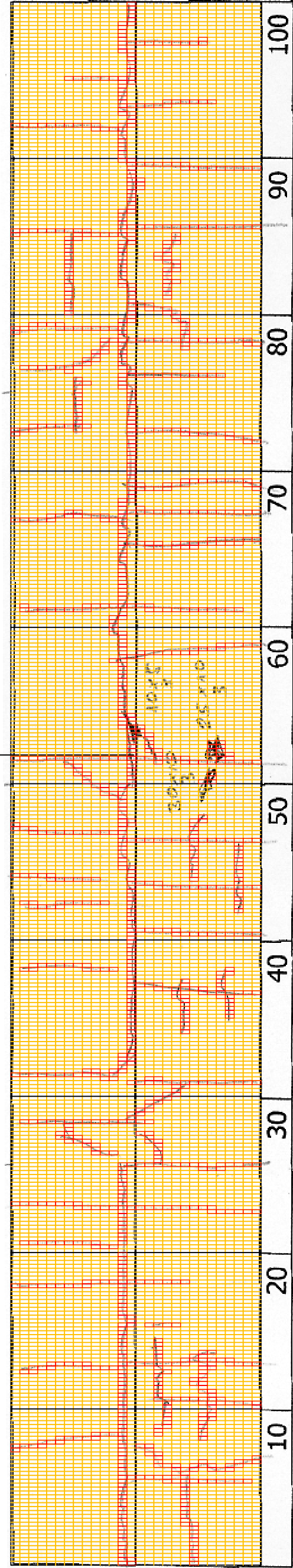
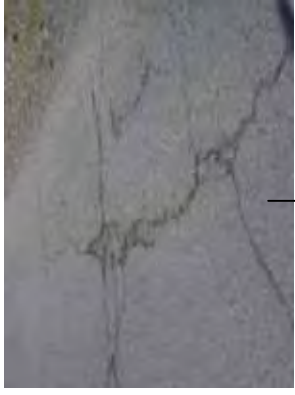


DSC01110



12+200

COMMENT	Volume of crackle: most Width of crackle: 05-20mm 352 / 2800 * 100 = 12.57%	Volume of crackle: most Width of crackle: 05-70mm 370 / 2800 * 100 = 13.21%	Volume of crackle: most Width of crackle: 05-80mm There is a pothole in + 12351 metre. (350*420*75mm) 327 / 2800 * 100 = 11.68%	Volume of crackle: most Width of crackle: 05-30mm 328 / 2800 * 100 = 11.71%
SUBJECTIVE EVALUATION	3	3	3	3
OBJECTIVE EVALUATION	b	b, c	b, c	b
TYPE OF PAVEMENT REHABILITATION	B	B	B	B



DSC01107



DSC01108



DSC01109



DSC01111

THE BASIC DESIGN STUDY ON CONSTRUCTION OF EASTERN ARTERIAL ROAD IN MONGOLIA

JAPAN INTERNATIONAL COOPERATION AGENCY (JICA)

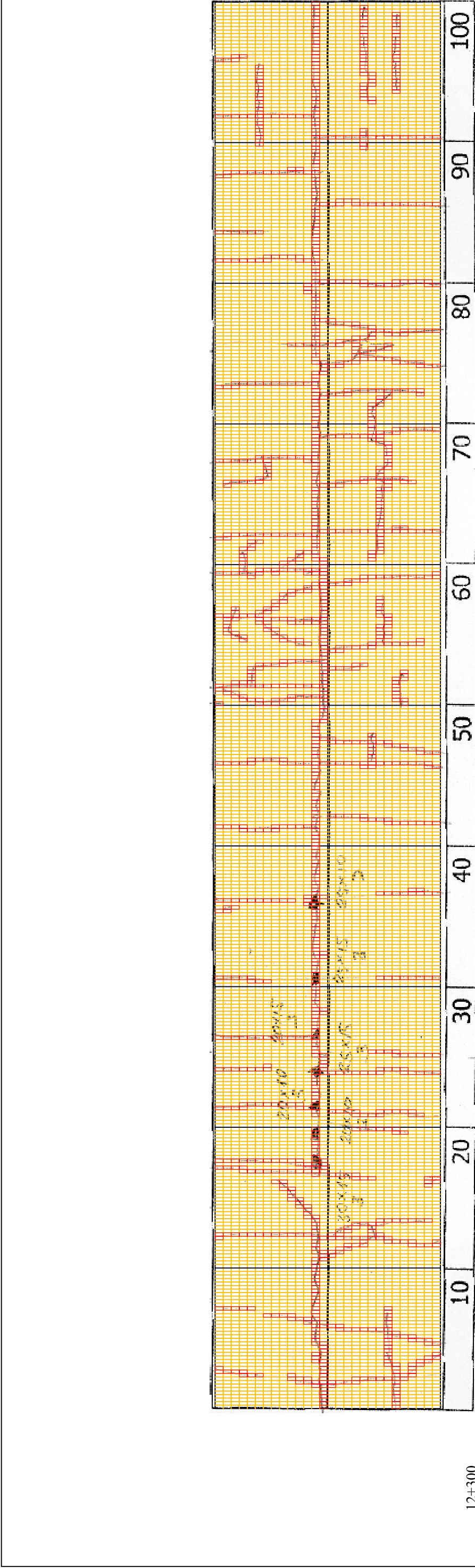
DEPARTMENT OF ROADS,
MINISTRY OF INFRASTRUCTURE,
THE GOVERNMENT OF MONGOLIA

PACIFIC CONSULTANTS INTERNATIONAL
JAPAN OVERSEAS CONSULTANTS

Drawing title
12300-12400

No.
D-121

Scale



	10	20	30	40	50	60	70	80	90	100
12+300										
COMMENT	Volume of crackle: most Width of crackle: 05-80mm There are the most crackle in central axis of the road. $387 / 2800 * 100 = 13.82\%$									
SUBJECTIVE EVALUATION	3									
OBJECTIVE EVALUATION	b, c									
TYPE OF PAVEMENT REHABILITATION	B									
	Volume of crackle: most Width of crackle: 05-120 mm There are the most crackle in central axis of the road. $260 / 2800 * 100 = 9.29\%$									
	3									
	b, c									
	B									
	Volume of crackle: most Width of crackle: 05-40mm There are the most crackle central axis side of the road. $506 / 2800 * 100 = 18.07\%$									
	3									
	a, b									
	B									
	Volume of crackle: medium Width of crackle: 05-50mm $327 / 2800 * 100 = 11.68\%$									
	3									
	b									
	B									



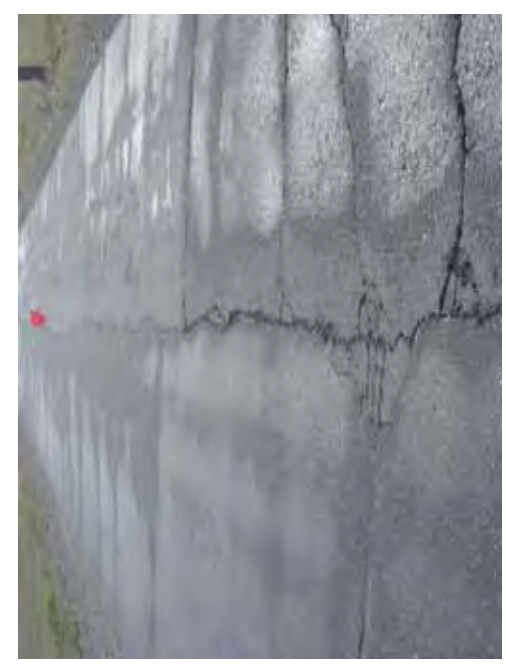
DSC01114



DSC01115



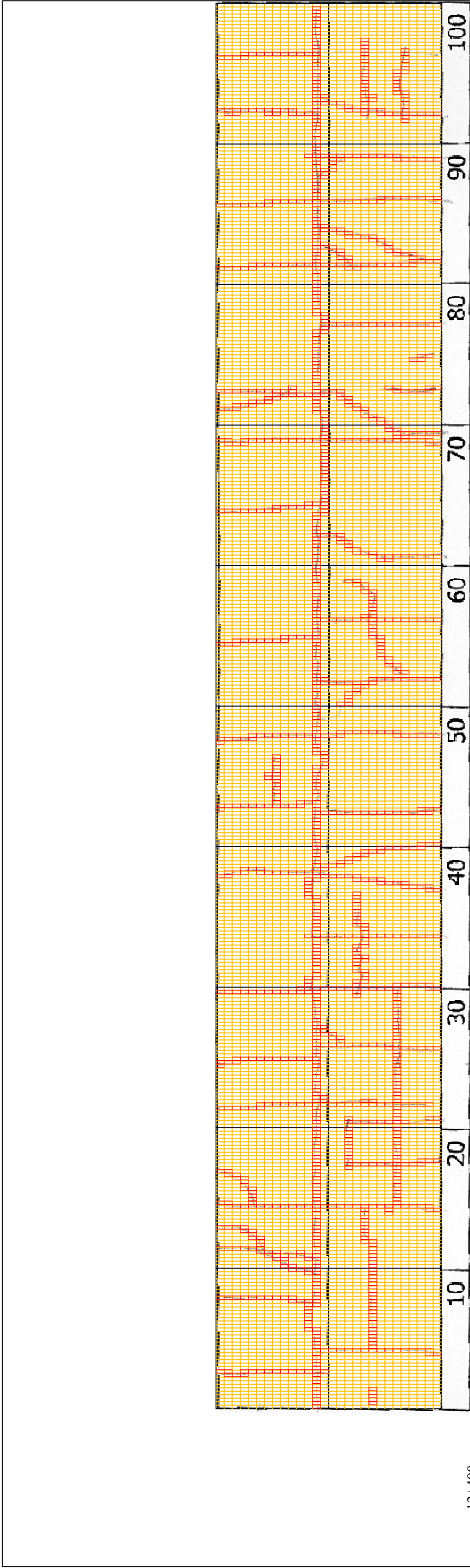
DSC01116



DSC01117

THE BASIC DESIGN STUDY ON CONSTRUCTION OF EASTERN ARTERIAL ROAD IN MONGOLIA

JAPAN INTERNATIONAL COOPERATION AGENCY (JICA)	DEPARTMENT OF ROADS, MINISTRY OF INFRASTRUCTURE, THE GOVERNMENT OF MONGOLIA
PACIFIC CONSULTANTS INTERNATIONAL JAPAN OVERSEAS CONSULTANTS	
Drawing title: 12-400-12500	
Scale: No. D-122	



12+400

COMMENT	Volume of crackle: medium Width of crackle: 05-50mm 398 / 2800 * 100 = 14.21%	Volume of crackle: medium Width of crackle: 05-70mm 362 / 2800 * 100 = 12.93%	Volume of crackle: medium Width of crackle: 05-30mm 329 / 2800 * 100 = 11.75%	Volume of crackle: medium Width of crackle: 05-20mm 327 / 2800 * 100 = 11.68%
SUBJECTIVE EVALUATION	3	3	3	3
OBJECTIVE EVALUATION	b	b	b	b
TYPE OF PAVEMENT REHABILITATION	B	B	B	B



DSC01118



DSC01119



DSC01120



DSC01121

THE BASIC DESIGN STUDY ON CONSTRUCTION OF EASTERN ARTERIAL ROAD IN MONGOLIA

JAPAN INTERNATIONAL COOPERATION AGENCY (JICA)

DEPARTMENT OF ROADS,
MINISTRY OF INFRASTRUCTURE,
THE GOVERNMENT OF MONGOLIA

PACIFIC CONSULTANTS INTERNATIONAL
JAPAN OVERSEAS CONSULTANTS

Drawing title

12500-12600

No.

D-123

Scale

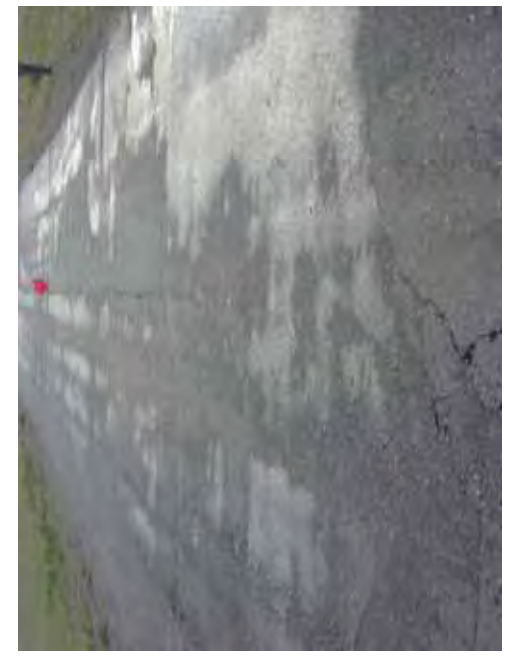


12+500

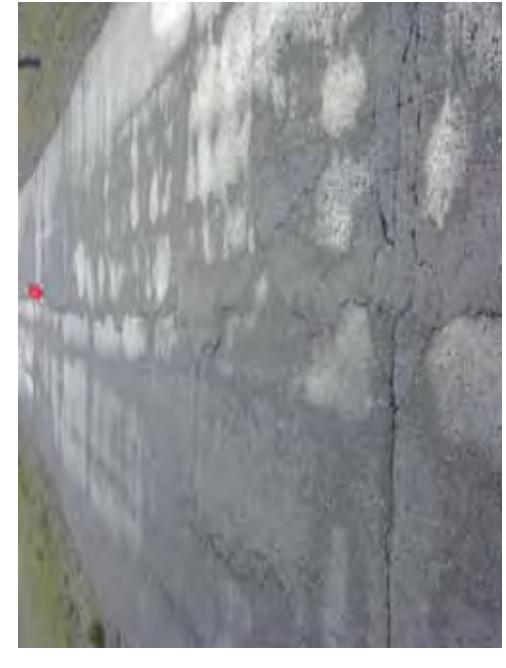
COMMENT	Volume of crackle: less Width of crackle: 05-20mm 386 / 2800 * 100 = 13.79%	Volume of crackle: less Width of crackle: 05-10mm 271 / 2800 * 100 = 9.68%	Volume of crackle: medium Width of crackle: 05-20mm 291 / 2800 * 100 = 10.39%	Volume of crackle: medium Width of crackle: 05-30mm 290 / 2800 * 100 = 10.36%
SUBJECTIVE EVALUATION	3	3	3	3
OBJECTIVE EVALUATION	b	b	b	b
TYPE OF PAVEMENT REHABILITATION	B	B	B	B



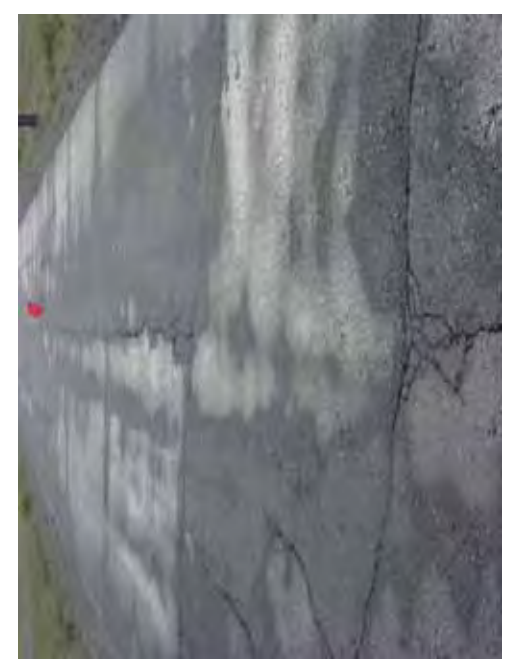
DSC01122



DSC01123

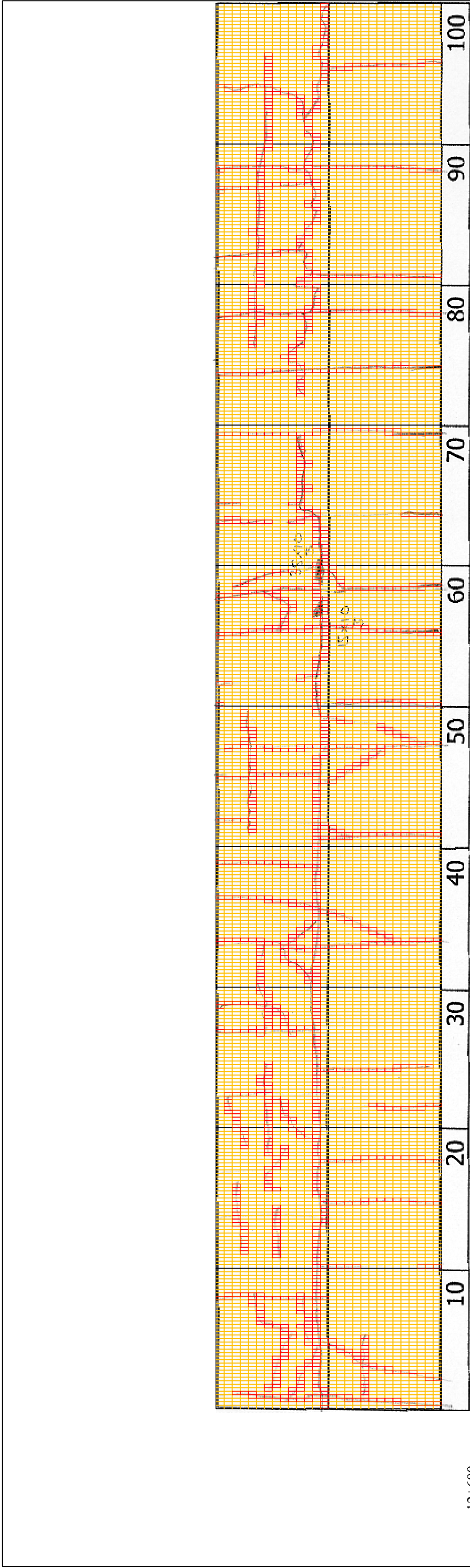


DSC01124



DSC01125

THE BASIC DESIGN STUDY ON CONSTRUCTION OF EASTERN ARTERIAL ROAD IN MONGOLIA	
JAPAN INTERNATIONAL COOPERATION AGENCY (JICA)	DEPARTMENT OF ROADS, MINISTRY OF INFRASTRUCTURE, THE GOVERNMENT OF MONGOLIA
PACIFIC CONSULTANTS INTERNATIONAL JAPAN OVERSEAS CONSULTANTS	
Drawing title	Scale
12600-12700	
No.	D-124

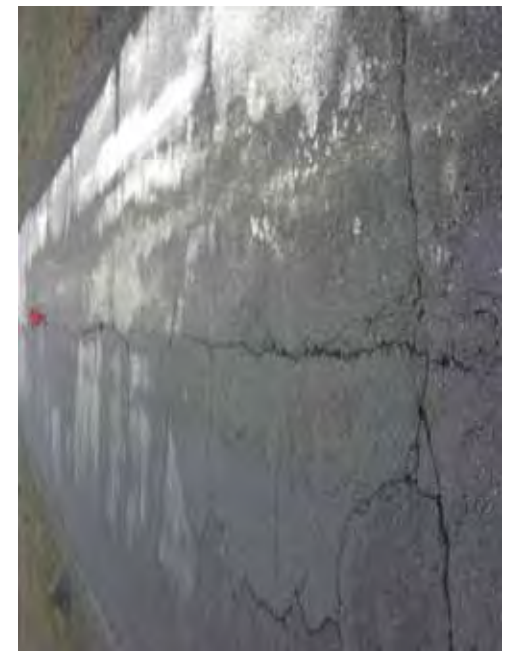


12+600

COMMENT	Volume of crackle: medium Width of crackle: 05-50mm 442 / 2800 * 100 = 15.79%	Volume of crackle: medium Width of crackle: 05-30mm 395 / 2800 * 100 = %	Volume of crackle: most Width of crackle: 05-30mm There is a pothole in + 12758 metre. (350*100*30mm) 323 / 2800 * 100 = 11.54%	Volume of crackle: medium Width of crackle: 05-20mm 346 / 2800 * 100 = 12.36%
SUBJECTIVE EVALUATION	3	3	3	3
OBJECTIVE EVALUATION	b	b	b, c	b
TYPE OF PAVEMENT REHABILITATION	B	B	B	B



DSC01126



DSC01127



DSC01128



DSC01129

THE BASIC DESIGN STUDY ON CONSTRUCTION OF EASTERN ARTERIAL ROAD IN MONGOLIA	
JAPAN INTERNATIONAL COOPERATION AGENCY (JICA)	DEPARTMENT OF ROADS,
PACIFIC CONSULTANTS INTERNATIONAL JAPAN OVERSEAS CONSULTANTS	MINISTRY OF INFRASTRUCTURE, THE GOVERNMENT OF MONGOLIA
Drawing title 12700-12800	Scale
	No. D-125