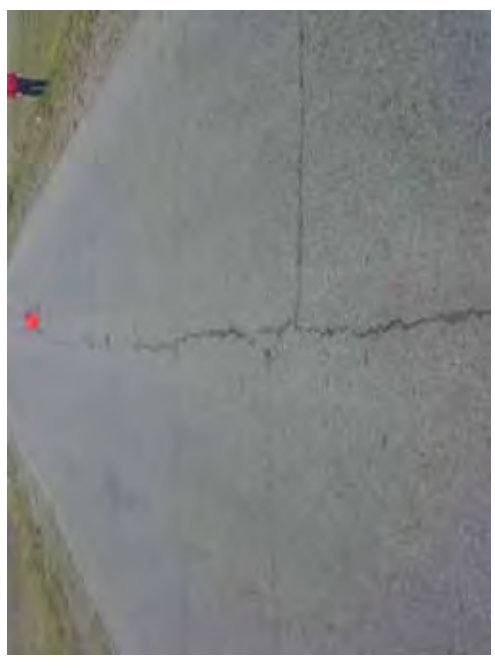
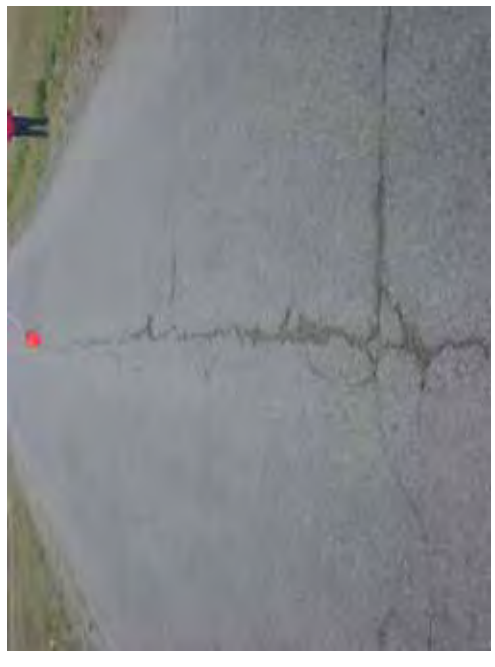


11+700	10	20	30	40	50	60	70	80	90	100
COMMENT	Volume of crackle: less Width of crackle: 05-30mm 286 / 2800 * 100 = 10.21%									
SUBJECTIVE EVALUATION	3									
OBJECTIVE EVALUATION	b									
TYPE OF PAVEMENT REHABILITATION	B									
	Volume of crackle: less Width of crackle: 10-30mm There are the most crackle in central axis of the road. 215 / 2800 * 100 = 7.68%									
	3									
	b, c									
	B									
	Volume of crackle: less Width of crackle: 05-30mm 196 / 2800 * 100 = 7.00%									
	3									
	b, c									
	B									
	Volume of crackle: less Width of crackle: 05-80mm There is a pothole in + 11876 metre. (500*150*30mm) There are the most crackle in left side of the road. 321 / 2800 * 100 = 11.46%									
	3									
	b									
	B									



DSC01087



DSC01088



DSC01089



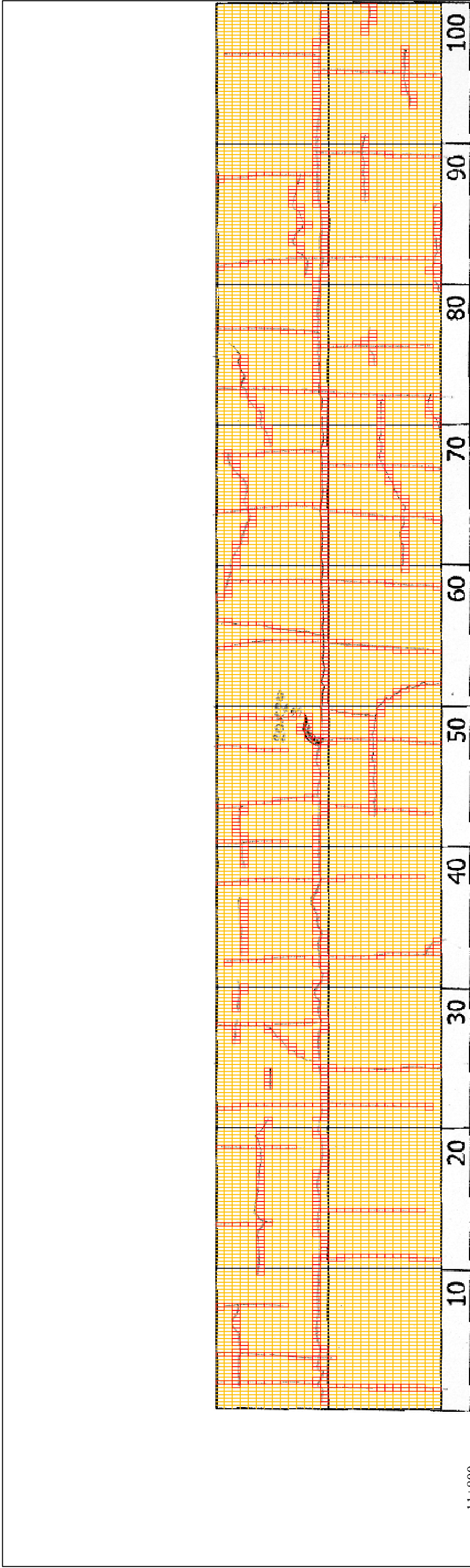
DSC01090

THE BASIC DESIGN STUDY ON CONSTRUCTION OF EASTERN ARTERIAL ROAD IN MONGOLIA

JAPAN INTERNATIONAL COOPERATION AGENCY (JICA)
MINISTRY OF INFRASTRUCTURE,
THE GOVERNMENT OF MONGOLIA

PACIFIC CONSULTANTS INTERNATIONAL
JAPAN OVERSEAS CONSULTANTS

Drawing title: 11800-11900
Scale: No. D-116



11+800

COMMENT	Volume of crackle: medium Width of crackle: 05-35mm There are the most crackle in central axis of the road. 334 / 2800 * 100 = 11.93%	Volume of crackle: medium Width of crackle: 05-60mm There is a pothole in + 11950 metre. (200*300*30mm) 425 / 2800 * 100 = 15.18%	Volume of crackle: medium Width of crackle: 05-50mm 329 / 2800 * 100 = 11.75%
SUBJECTIVE EVALUATION	3	3	3
OBJECTIVE EVALUATION	b	b	b
TYPE OF PAVEMENT REHABILITATION	B	B	B



DSC01091



DSC01092



DSC01093



DSC01094

THE BASIC DESIGN STUDY ON CONSTRUCTION OF EASTERN ARTERIAL ROAD IN MONGOLIA

JAPAN INTERNATIONAL COOPERATION AGENCY (JICA)

DEPARTMENT OF ROADS,
MINISTRY OF INFRASTRUCTURE,
THE GOVERNMENT OF MONGOLIA

PACIFIC CONSULTANTS INTERNATIONAL
JAPAN OVERSEAS CONSULTANTS

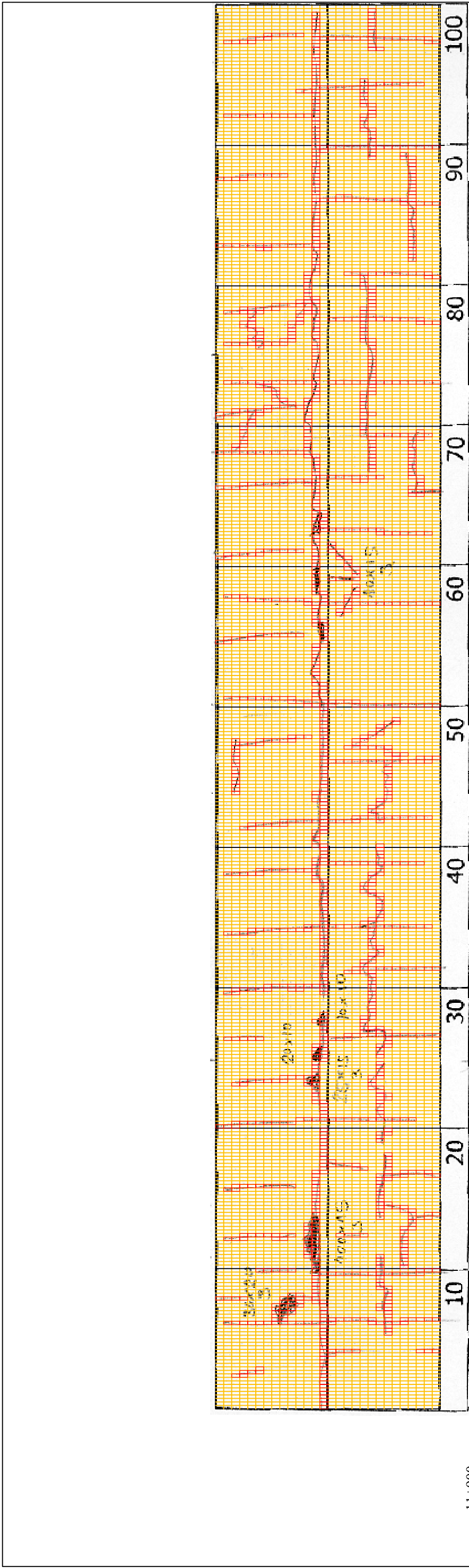
Drawing title

11900-12000

No.

D-117

Scale



11+900

COMMENT	Volume of crackle: most Width of crackle: 05-110mm There are the most crackle in central axis of the road. $385 / 2800 * 100 = 13.75\%$	Volume of crackle: medium Width of crackle: 05-100mm There are the most crackle in central axis of the road. $393 / 2800 * 100 = 14.04\%$	Volume of crackle: most Width of crackle: 05-60mm There are the most crackle in central axis of the road. $406 / 2800 * 100 = 14.50\%$	Volume of crackle: most Width of crackle: 10-60mm There are the most crackle in left side of the road. $387 / 2800 * 100 = 13.82\%$
SUBJECTIVE EVALUATION	3	3	3	3
OBJECTIVE EVALUATION	b, c	b, c	b, c	b
TYPE OF PAVEMENT REHABILITATION	B	B	B	B



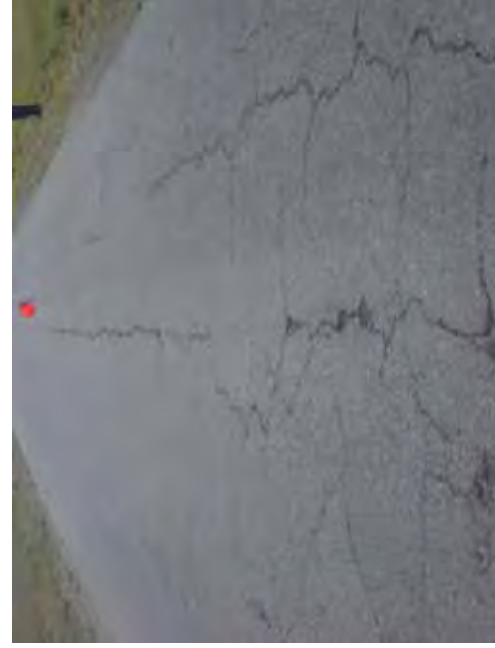
DSC01095



DSC01096



DSC01097



DSC01098

THE BASIC DESIGN STUDY ON CONSTRUCTION OF EASTERN ARTERIAL ROAD IN MONGOLIA

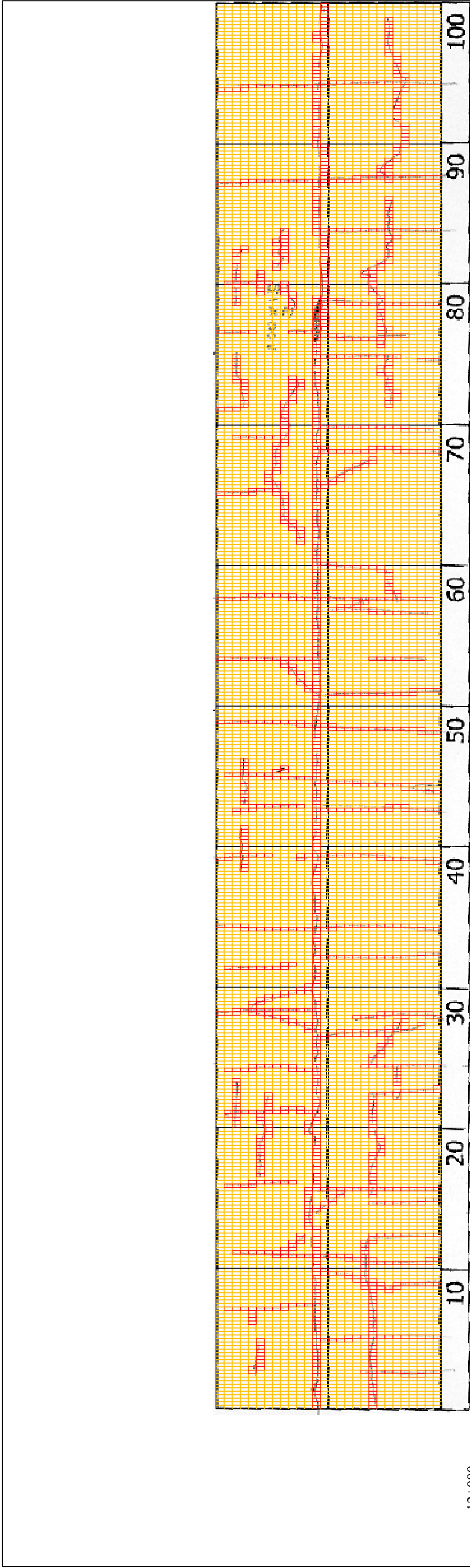
JAPAN INTERNATIONAL COOPERATION AGENCY (JICA)

DEPARTMENT OF ROADS,
MINISTRY OF INFRASTRUCTURE,
THE GOVERNMENT OF MONGOLIA

PACIFIC CONSULTANTS INTERNATIONAL
JAPAN OVERSEAS CONSULTANTS

Drawing title
12000-12100

Scale
No.
D-118



12+000

COMMENT	Volume of crackle: most Width of crackle: 05-50mm 442 / 2800 * 100 = 15.79%	Volume of crackle: most Width of crackle: 05-35mm 393 / 2800 * 100 = 14.04%	Volume of crackle: most Width of crackle: 05-70mm 382 / 2800 * 100 = 13.64%	Volume of crackle: most Width of crackle: 05-80mm There is a pothole in + 12178 metre. (1000*150*30mm) 379 / 2800 * 100 = 13.54%
SUBJECTIVE EVALUATION	3	3	3	3
OBJECTIVE EVALUATION	b	b	b	b, c
TYPE OF PAVEMENT REHABILITATION	B	B	B	B



DSC01099



DSC01100

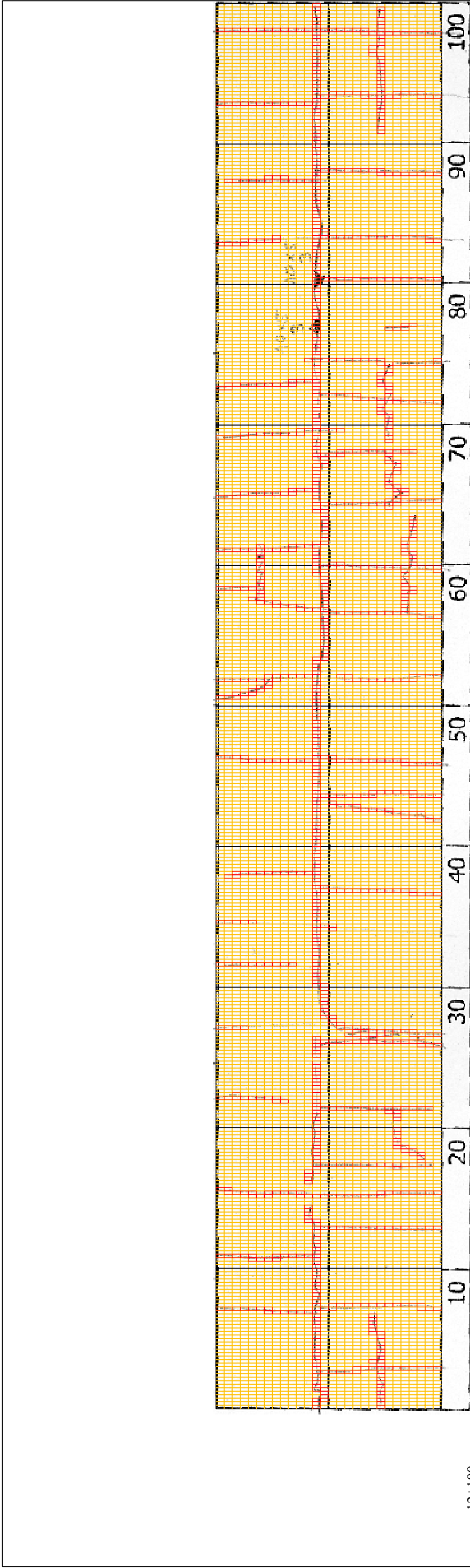


DSC01101



DSC01102

THE BASIC DESIGN STUDY ON CONSTRUCTION OF EASTERN ARTERIAL ROAD IN MONGOLIA	
JAPAN INTERNATIONAL COOPERATION AGENCY (JICA)	DEPARTMENT OF ROADS,
PACIFIC CONSULTANTS INTERNATIONAL JAPAN OVERSEAS CONSULTANTS	MINISTRY OF INFRASTRUCTURE, THE GOVERNMENT OF MONGOLIA
Drawing title 12100+12200	Scale
No.	D-119



12+100

COMMENT	Volume of crackle: medium Width of crackle: 05-20mm 292 / 2800 * 100 = 10.43%	Volume of crackle: less Width of crackle: 05-20mm 259 / 2800 * 100 = 9.25%	Volume of crackle: less Width of crackle: 05-20mm 409 / 2800 * 100 = 14.61%	Volume of crackle: medium Width of crackle: 05-40mm There is a pothole in + 12274 metre. (100*50*30mm) 272 / 2800 * 100 = 9.71%
SUBJECTIVE EVALUATION	3	3	3	3
OBJECTIVE EVALUATION	b	b	b	b, c
TYPE OF PAVEMENT REHABILITATION	B	B	B	B



DSC01103



DSC01104



DSC01105



DSC01106

THE BASIC DESIGN STUDY ON CONSTRUCTION OF EASTERN ARTERIAL ROAD IN MONGOLIA	
JAPAN INTERNATIONAL COOPERATION AGENCY (JICA)	DEPARTMENT OF ROADS, MINISTRY OF INFRASTRUCTURE, THE GOVERNMENT OF MONGOLIA
PACIFIC CONSULTANTS INTERNATIONAL JAPAN OVERSEAS CONSULTANTS	
Drawing title	Scale
122004-12300	No.
	D-120