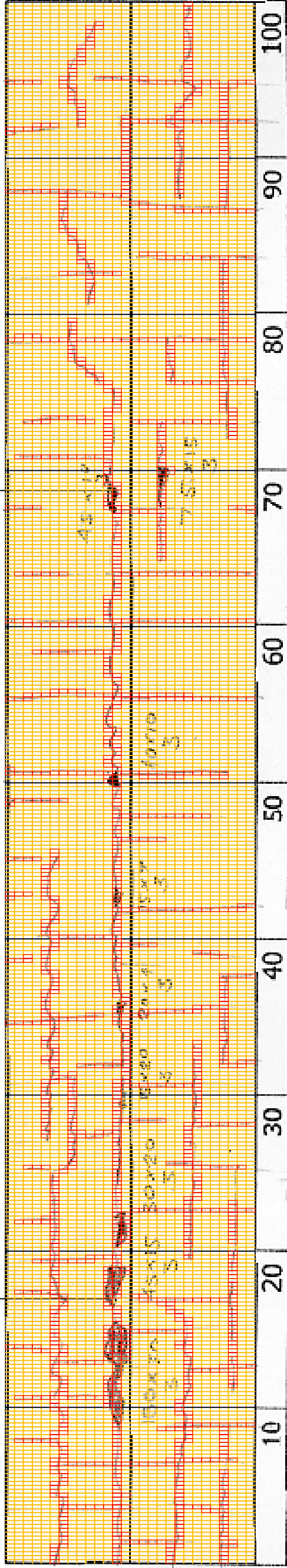
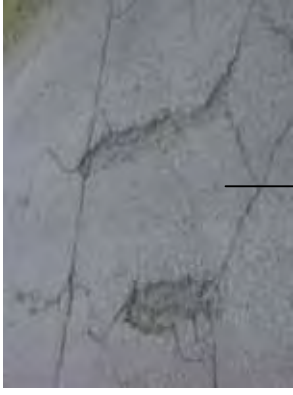


DSC01053



DSC01056



10+900

COMMENT	Volume of crackle: most Width of crackle: 05-40mm There are a pothole between in the + 11009 + 11021 metre. There are the most crackle in central axis of the road. 568 / 2800 * 100 = 20.29%	Volume of crackle: most Width of crackle: 10-70mm There are the most crackle in central axis of the road. / 2800 * 100 = %	Volume of crackle: most Width of crackle: 05-60mm There is a pothole in + 11070 metre. (450*100*30mm)	Volume of crackle: most Width of crackle: 10-40mm 371 / 2800 * 100 = 13.25%
SUBJECTIVE EVALUATION	3	3	3	3
OBJECTIVE EVALUATION	b, c	b, c	b, c	b
TYPE OF PAVEMENT REHABILITATION	B	B	B	B



DSC01052



DSC01054



DSC01055



DSC01057

THE BASIC DESIGN STUDY ON CONSTRUCTION OF EASTERN ARTERIAL ROAD IN MONGOLIA

JAPAN INTERNATIONAL COOPERATION AGENCY (JICA)

MINISTRY OF INFRASTRUCTURE,
THE GOVERNMENT OF MONGOLIA

PACIFIC CONSULTANTS INTERNATIONAL
JAPAN OVERSEAS CONSULTANTS

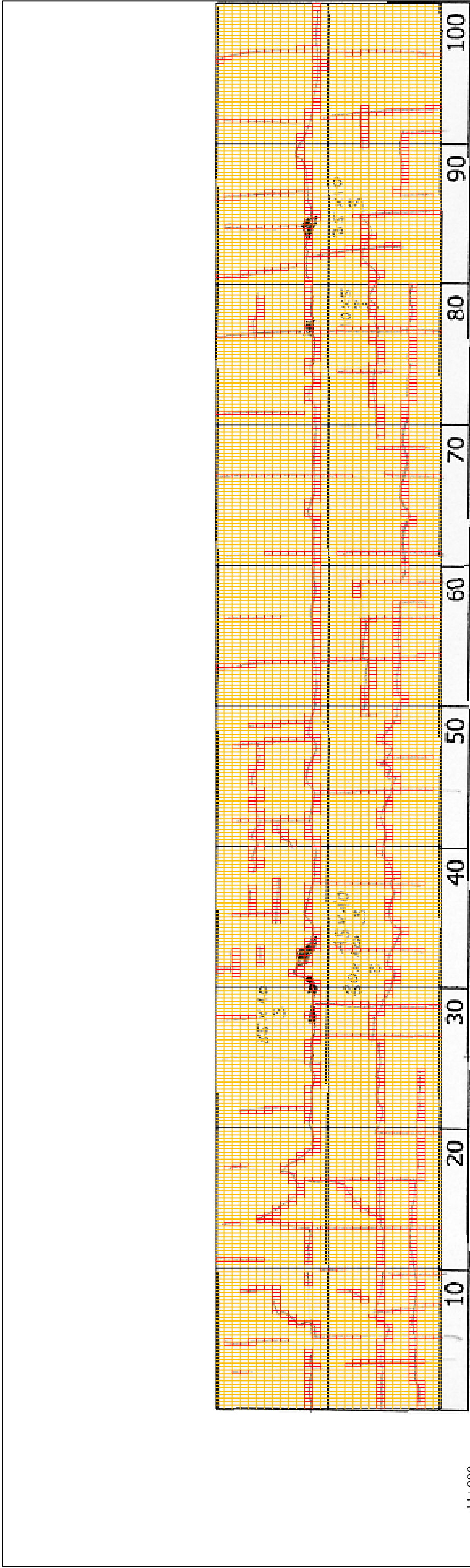
Drawing title

11000-11100

No.

D-108

Scale



11+000

COMMENT	Volume of crackle: most Width of crackle: 10-60mm 457 / 2800 * 100 = 16.32%	Volume of crackle: most Width of crackle: 05-20mm There is a pothole in + 11129 metre. (450*400*30mm) There are the most crackle in central axis of the road. 455 / 2800 * 100 = 16.25%	Volume of crackle: most Width of crackle: 10-70mm There are the most crackle in central axis of the road. 385 / 2800 * 100 = 13.75%	Volume of crackle: most Width of crackle: 05-60mm 391 / 2800 * 100 = 13.96%
SUBJECTIVE EVALUATION	3	3	3	3
OBJECTIVE EVALUATION	b	b, c	b	b, c
TYPE OF PAVEMENT REHABILITATION	B	B	B	B



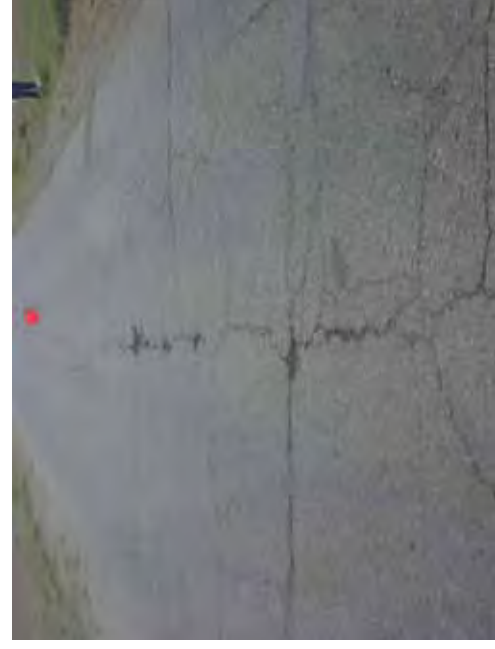
DSC01058



DSC01059



DSC01060



DSC01061

THE BASIC DESIGN STUDY ON CONSTRUCTION OF EASTERN ARTERIAL ROAD IN MONGOLIA

JAPAN INTERNATIONAL COOPERATION AGENCY (JICA)
MINISTRY OF INFRASTRUCTURE,
THE GOVERNMENT OF MONGOLIA

PACIFIC CONSULTANTS INTERNATIONAL
JAPAN OVERSEAS CONSULTANTS

Scale
1:1100-1:1200

No.
D-109



11+100

COMMENT	Volume of crackle: most Width of crackle: 05-45mm 401 / 2800 * 100 = 14.32%	Volume of crackle: most Width of crackle: 05-20mm There are the most crackle in central axis of the road. 406 / 2800 * 100 = 14.50%	Volume of crackle: most Width of crackle: 10-100mm There are the most crackle in central axis of the road. 475 / 2800 * 100 = 16.96%	Volume of crackle: most Width of crackle: 05-70mm There is a pothole in + 11280 metre. (600*300*50mm) 376 / 2800 * 100 = 13.43%
SUBJECTIVE EVALUATION	3	3	3	3
OBJECTIVE EVALUATION	b	b	b	b, c
TYPE OF PAVEMENT REHABILITATION	B	B	B	B



DSC01062



DSC01063



DSC01064



DSC01065

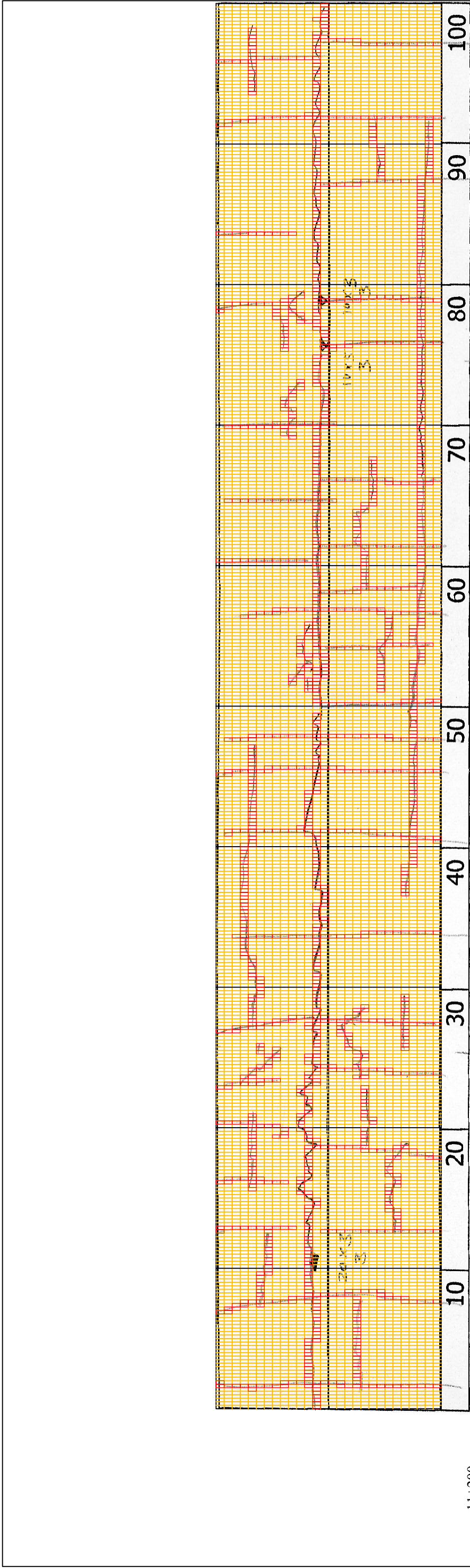
THE BASIC DESIGN STUDY ON CONSTRUCTION OF EASTERN ARTERIAL ROAD IN MONGOLIA

JAPAN INTERNATIONAL COOPERATION AGENCY (JICA)
MINISTRY OF INFRASTRUCTURE,
THE GOVERNMENT OF MONGOLIA

PACIFIC CONSULTANTS INTERNATIONAL
JAPAN OVERSEAS CONSULTANTS

Scale
1:1200-1:1300

No.
D-110



11+200

COMMENT	Volume of crackle: most Width of crackle: 05-70mm 414 / 2800 * 100 = 14.79%	Volume of crackle: most Width of crackle: 05-50mm 430 / 2800 * 100 = 15.36%	Volume of crackle: medium Width of crackle: 05-30mm There are the most crackle in central axis of the road. 454 / 2800 * 100 = 16.21%	Volume of crackle: medium Width of crackle: 05-50mm There are the most crackle in central axis of the road. 362 / 2800 * 100 = 12.93%
SUBJECTIVE EVALUATION	3	3	3	3
OBJECTIVE EVALUATION	b, c	b	b	b, c
TYPE OF PAVEMENT REHABILITATION	B	B	B	B



DSC01066



DSC01067



DSC01068



DSC01069

THE BASIC DESIGN STUDY ON CONSTRUCTION OF EASTERN ARTERIAL ROAD IN MONGOLIA	
JAPAN INTERNATIONAL COOPERATION AGENCY (JICA)	DEPARTMENT OF ROADS,
PACIFIC CONSULTANTS INTERNATIONAL JAPAN OVERSEAS CONSULTANTS	MINISTRY OF INFRASTRUCTURE, THE GOVERNMENT OF MONGOLIA
Drawing title 11300-11400	Scale
	No. D-111