

10+500

COMMENT	Volume of crackle: less Width of crackle: 05-90mm 246 / 2800 * 100 = 8.79%	Volume of crackle: less Width of crackle: 05-20mm 288 / 2800 * 100 = 10.29%	Volume of crackle: less Width of crackle: 05-15mm 307 / 2800 * 100 = 10.96%	Volume of crackle: less Width of crackle: 05-10mm 232 / 2800 * 100 = 8.29%
SUBJECTIVE EVALUATION	3	3	3	3
OBJECTIVE EVALUATION	b	b, c	b, c	b, c
TYPE OF PAVEMENT REHABILITATION	B	B	B	B



DSC01035



DSC01036



DSC01037



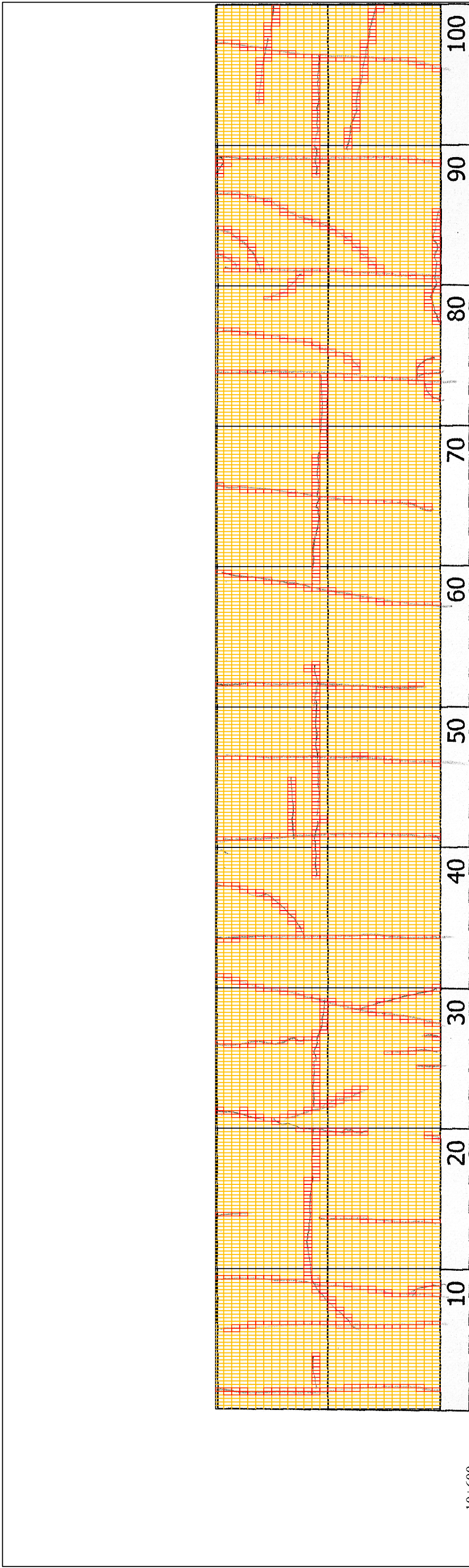
DSC01038

THE BASIC DESIGN STUDY ON CONSTRUCTION OF EASTERN ARTERIAL ROAD IN MONGOLIA

JAPAN INTERNATIONAL COOPERATION AGENCY (JICA)
MINISTRY OF INFRASTRUCTURE,
THE GOVERNMENT OF MONGOLIA

PACIFIC CONSULTANTS INTERNATIONAL
JAPAN OVERSEAS CONSULTANTS

Drawing title: 10600-10700
Scale: No. D-104



10+600	Volume of crackle: less Width of crackle: 05-20mm 286 / 2800 * 100 = 10.21%	Volume of crackle: less Width of crackle: 05-20mm 226 / 2800 * 100 = 8.07%	Volume of crackle: less Width of crackle: 05-15mm 346 / 2800 * 100 = 12.36%
COMMENT			
SUBJECTIVE EVALUATION	3	3	3
OBJECTIVE EVALUATION	b	b	b
TYPE OF PAVEMENT REHABILITATION	B	B	B



DSC01039



DSC01040



DSC01041



DSC01042

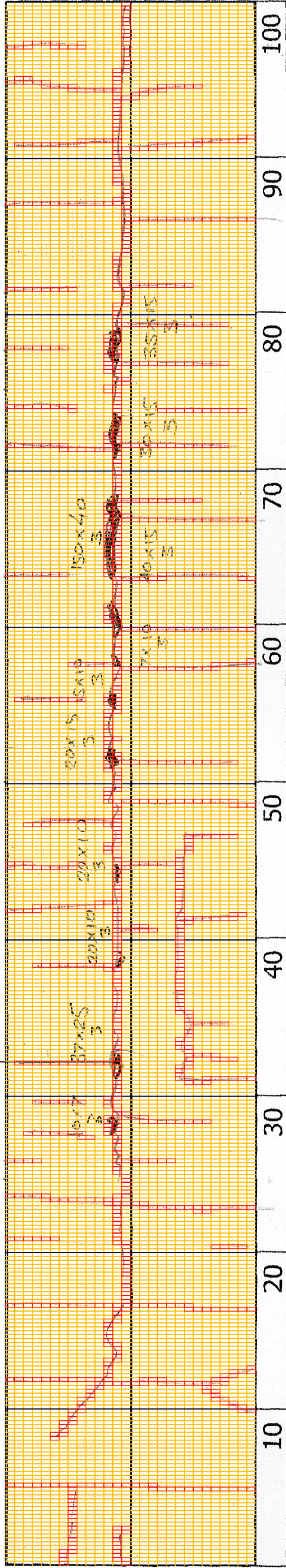
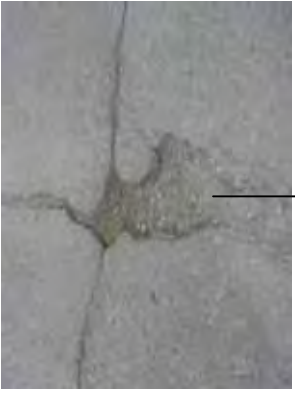
THE BASIC DESIGN STUDY ON CONSTRUCTION OF EASTERN ARTERIAL ROAD IN MONGOLIA

JAPAN INTERNATIONAL COOPERATION AGENCY (JICA)
 DEPARTMENT OF ROADS,
 MINISTRY OF INFRASTRUCTURE,
 THE GOVERNMENT OF MONGOLIA

PACIFIC CONSULTANTS INTERNATIONAL
 JAPAN OVERSEAS CONSULTANTS

Drawing title: 10700-1-10800
 Scale: No. D-105

DSC01045

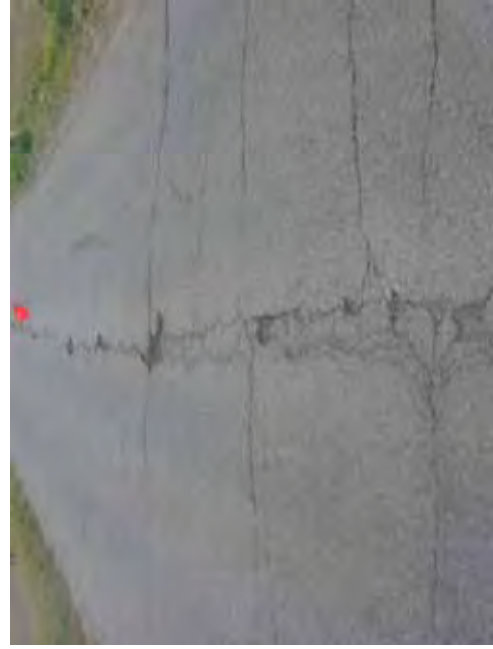


10+700

COMMENT	Volume of crackle: less Width of crackle: 05-25mm 260 / 2800 * 100 = 9.29%	Volume of crackle: most Width of crackle: 10-130mm There is a pothole in + 10830 metre. (370*250*30mm) There are the most crackle in central axis of the road. 338 / 2800 * 100 = 12.07%	Volume of crackle: most Width of crackle: 05-30mm There are the most crackle in central axis of the road. 287 / 2800 * 100 = 10.25%	Volume of crackle: most Width of crackle: 05-60mm There are the most crackle in central axis of the road. 264 / 2800 * 100 = 9.43%
SUBJECTIVE EVALUATION	3	3	3	3
OBJECTIVE EVALUATION	b	b, c	b, c	b, c
TYPE OF PAVEMENT REHABILITATION	B	B	B	B



DSC01043



DSC01044



DSC01046



DSC01047

THE BASIC DESIGN STUDY ON CONSTRUCTION OF EASTERN ARTERIAL ROAD IN MONGOLIA

JAPAN INTERNATIONAL COOPERATION AGENCY (JICA)

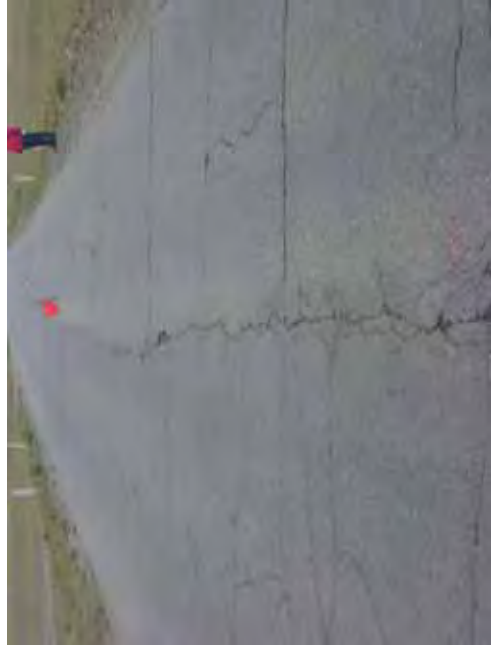
DEPARTMENT OF ROADS,
MINISTRY OF INFRASTRUCTURE,
THE GOVERNMENT OF MONGOLIA

PACIFIC CONSULTANTS INTERNATIONAL
JAPAN OVERSEAS CONSULTANTS

Drawing title
10800-10900
Scale
No.
D-106



10+800	Volume of crackle: most Width of crackle: 05-110mm There are the most crackle in central axis of the road. 436 / 2800 * 100 = 15.57%	Volume of crackle: most Width of crackle: 10-70mm There are the most crackle in central axis of the road. 498 / 2800 * 100 = 17.79%	Volume of crackle: most Width of crackle: 05-120mm There are the most crackle in central axis of the road. 364 / 2800 * 100 = 13.00%	Volume of crackle: most Width of crackle: 10-70mm There are the most crackle in central axis of the road. 344 / 2800 * 100 = 12.29%
COMMENT				
SUBJECTIVE EVALUATION	3	3	3	3
OBJECTIVE EVALUATION	b, c	b, c	b, c	b
TYPE OF PAVEMENT REHABILITATION	B	B	B	B



DSC01048



DSC01049



DSC01050



DSC01051

THE BASIC DESIGN STUDY ON CONSTRUCTION OF EASTERN ARTERIAL ROAD IN MONGOLIA

JAPAN INTERNATIONAL COOPERATION AGENCY (JICA)
MINISTRY OF INFRASTRUCTURE,
THE GOVERNMENT OF MONGOLIA

PACIFIC CONSULTANTS INTERNATIONAL
JAPAN OVERSEAS CONSULTANTS

Drawing title: 10900-I-1000
Scale: No. D-107