

9+000

COMMENT	Volume of crackle: less Width of crackle: 05mm 110 / 2800 * 100 = 3.93%	Volume of crackle: less Width of crackle: 05mm 78 / 2800 * 100 = 2.79%	Volume of crackle: less Width of crackle: 05-10mm 73 / 2800 * 100 = 2.61%	Volume of crackle: less Width of crackle: 05-10mm 192 / 2800 * 100 = 6.86%
SUBJECTIVE EVALUATION	3	3	3	3
OBJECTIVE EVALUATION	b	b	b	b
TYPE OF PAVEMENT REHABILITATION	B	B	B	B



DSC00972



DSC00973

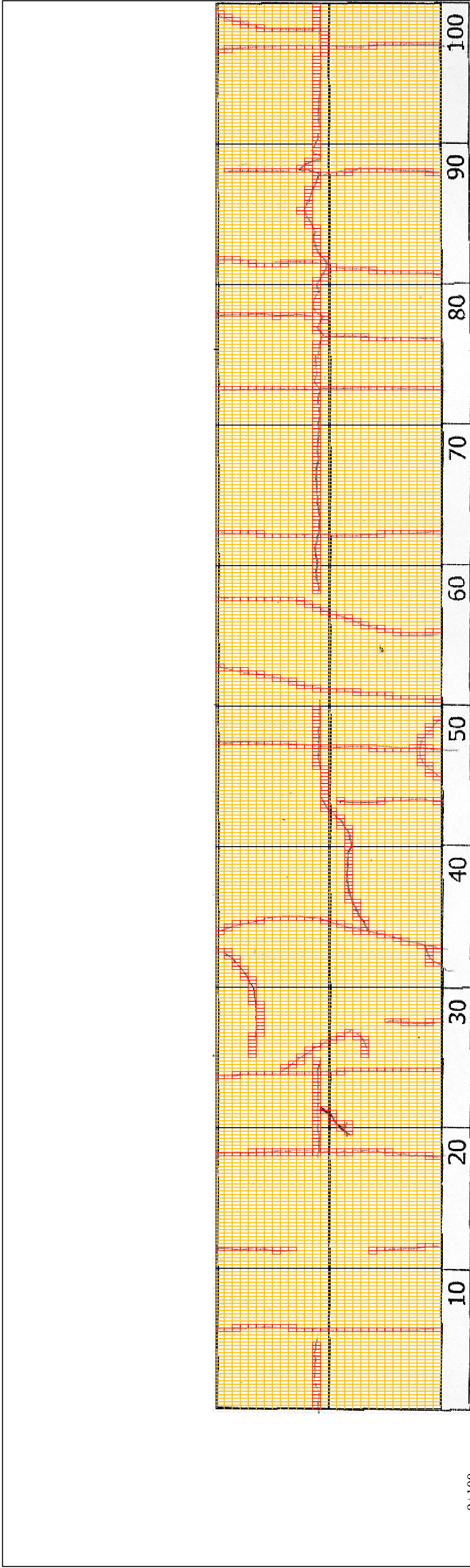


DSC00974



DSC00975

THE BASIC DESIGN STUDY ON CONSTRUCTION OF EASTERN ARTERIAL ROAD IN MONGOLIA	
JAPAN INTERNATIONAL COOPERATION AGENCY (JICA)	DEPARTMENT OF ROADS, MINISTRY OF INFRASTRUCTURE, THE GOVERNMENT OF MONGOLIA
PACIFIC CONSULTANTS INTERNATIONAL JAPAN OVERSEAS CONSULTANTS	
Drawing title	Scale
9100-9200	
No.	D-89



9+100

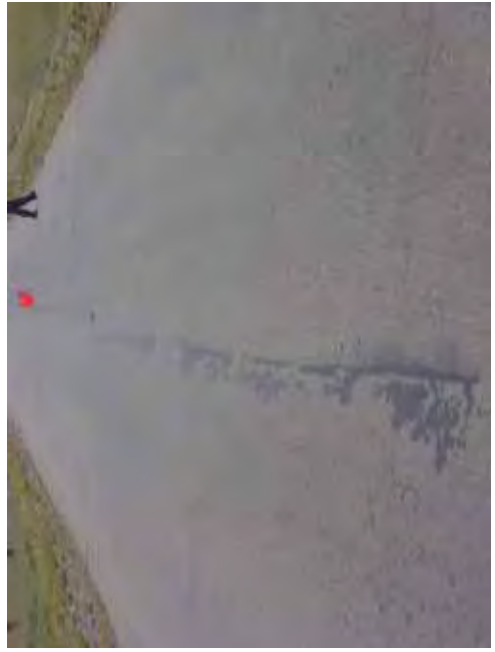
COMMENT	Volume of crackle: less Width of crackle: 05-10mm 186 / 2800 * 100 = 6.64%	Volume of crackle: less Width of crackle: 05-10mm 253 / 2800 * 100 = 9.04%	Volume of crackle: less Width of crackle: 05-10mm 202 / 2800 * 100 = 7.21%	Volume of crackle: less Width of crackle: 05-25mm 251 / 2800 * 100 = 8.96%
SUBJECTIVE EVALUATION	3	3	3	3
OBJECTIVE EVALUATION	b	b	b	b
TYPE OF PAVEMENT REHABILITATION	B	B	B	B



DSC00976



DSC00977



DSC00978



DSC00979

THE BASIC DESIGN STUDY ON CONSTRUCTION OF EASTERN ARTERIAL ROAD IN MONGOLIA	
JAPAN INTERNATIONAL COOPERATION AGENCY (JICA)	DEPARTMENT OF ROADS, MINISTRY OF INFRASTRUCTURE, THE GOVERNMENT OF MONGOLIA
PACIFIC CONSULTANTS INTERNATIONAL JAPAN OVERSEAS CONSULTANTS	
Drawing title	9200-9300
Scale	No.
	D-90



9+200	Volume of crackle: less Width of crackle: 05-20mm 228 / 2800 * 100 = 8.14%	Volume of crackle: less Width of crackle: 05-15mm 283 / 2800 * 100 = 10.11%	Volume of crackle: less Width of crackle: 10-50mm 259 / 2800 * 100 = 9.25%	Volume of crackle: medium Width of crackle: 10-80mm 332 / 2800 * 100 = 11.86%
COMMENT				
SUBJECTIVE EVALUATION	3	3	3	3
OBJECTIVE EVALUATION	b, c	b	b	b
TYPE OF PAVEMENT REHABILITATION	B	B	B	B



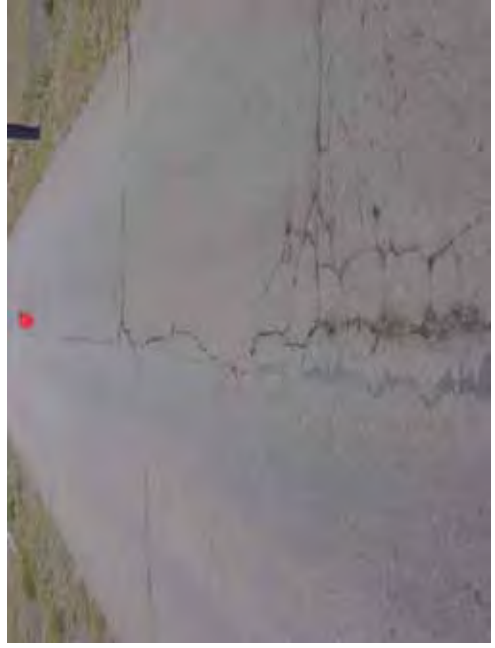
DSC00980



DSC00981



DSC00982



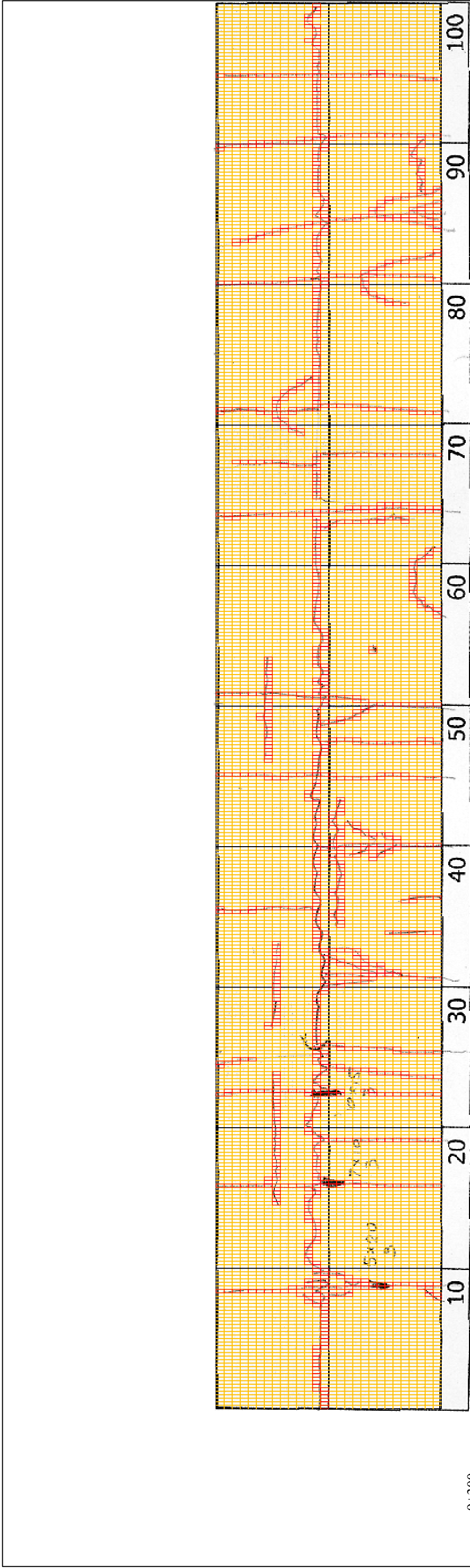
DSC00983

THE BASIC DESIGN STUDY ON CONSTRUCTION OF EASTERN ARTERIAL ROAD IN MONGOLIA

JAPAN INTERNATIONAL COOPERATION AGENCY (JICA)
 DEPARTMENT OF ROADS,
 MINISTRY OF INFRASTRUCTURE,
 THE GOVERNMENT OF MONGOLIA

PACIFIC CONSULTANTS INTERNATIONAL
 JAPAN OVERSEAS CONSULTANTS

Drawing title: 9300-9400
 Scale: No. D-91



9+300

COMMENT	Volume of crackle: medium Width of crackle: 05-70mm There is a pothole in + 9408 metre. (50*200*30mm) There is a pothole in + 9416 metre. (70*100*30mm) There is a pothole in + 9422 metre. (100*150*30mm) 315 / 2800 * 100 = 11.25%	Volume of crackle: medium Width of crackle: 10-120 395 / 2800 * 100 = 14.11%	Volume of crackle: medium Width of crackle: 05-50mm 302 / 2800 * 100 = 10.79%	Volume of crackle: medium Width of crackle: 05-10mm 323 / 2800 * 100 = 11.54%
SUBJECTIVE EVALUATION	3	3	3	3
OBJECTIVE EVALUATION	b, c	b	b	b
TYPE OF PAVEMENT REHABILITATION	B	B	B	B



DSC0984



DSC00985



DSC00986



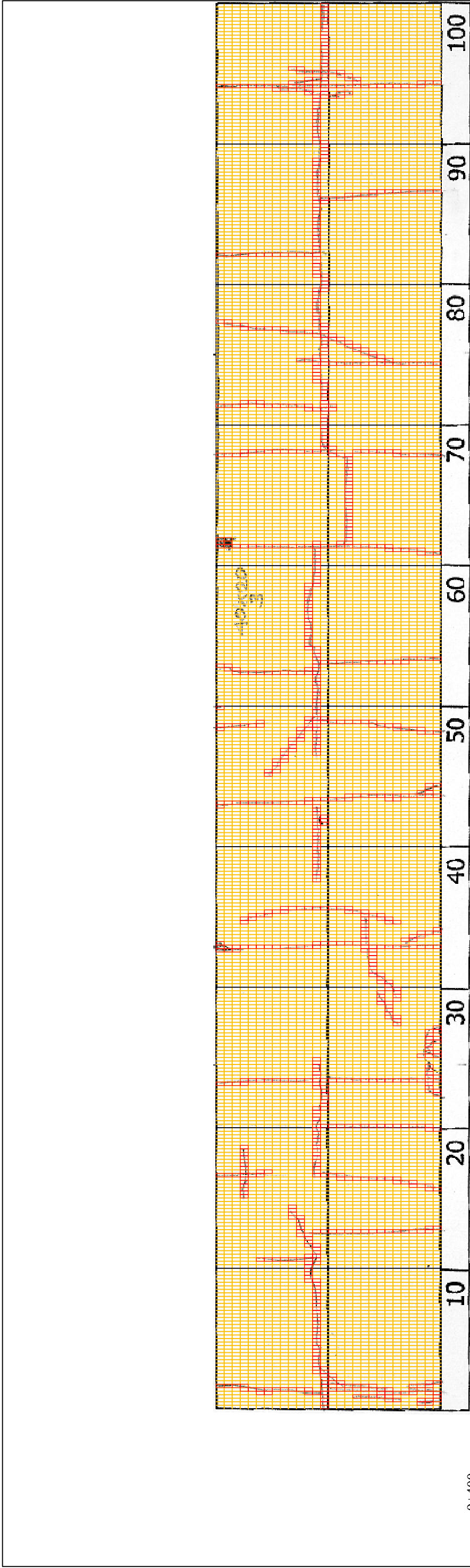
DSC00987

THE BASIC DESIGN STUDY ON CONSTRUCTION OF EASTERN ARTERIAL ROAD IN MONGOLIA

JAPAN INTERNATIONAL COOPERATION AGENCY (JICA)
PACIFIC CONSULTANTS INTERNATIONAL
JAPAN OVERSEAS CONSULTANTS

DEPARTMENT OF ROADS,
MINISTRY OF INFRASTRUCTURE,
THE GOVERNMENT OF MONGOLIA

Drawing title: 94/00-95/00
Scale: No. D-92



9+400	Volume of crackle: medium Width of crackle: 05-40mm 283 / 2800 * 100 = 10.11%	Volume of crackle: less Width of crackle: 05-20mm 250 / 2800 * 100 = %	Volume of crackle: medium Width of crackle: 05-15mm There is a pothole in + 9553 metre. (400*200*30mm) 239 / 2800 * 100 = 8.54%	Volume of crackle: medium Width of crackle: 05-50mm 220 / 2800 * 100 = 7.86%
COMMENT				
SUBJECTIVE EVALUATION	3	3	3	3
OBJECTIVE EVALUATION	b	b	b, c	b
TYPE OF PAVEMENT REHABILITATION	B	B	B	B



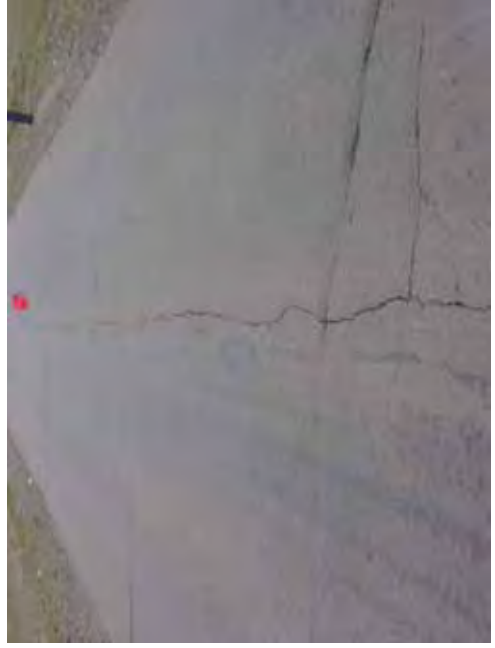
DSC00988



DSC00989



DSC00990



DSC00991

THE BASIC DESIGN STUDY ON CONSTRUCTION OF EASTERN ARTERIAL ROAD IN MONGOLIA

JAPAN INTERNATIONAL COOPERATION AGENCY (JICA)
MINISTRY OF INFRASTRUCTURE,
THE GOVERNMENT OF MONGOLIA

PACIFIC CONSULTANTS INTERNATIONAL
JAPAN OVERSEAS CONSULTANTS

Drawing title: 9500-9600
Scale: No. D-93