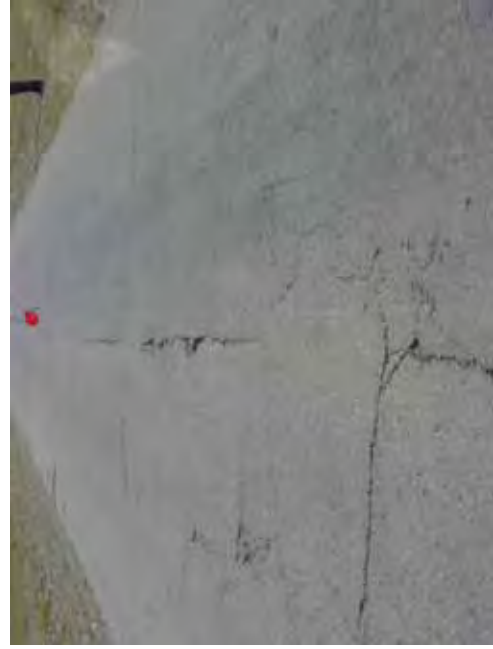


8+500

COMMENT	Volume of crackle: medium Width of crackle: 05-100mm 303 / 2800 * 100 = 10.82%	Volume of crackle: medium Width of crackle: 05-80mm 301 / 2800 * 100 = 10.75%	Volume of crackle: medium Width of crackle: 05mm 236 / 2800 * 100 = 8.43%	Volume of crackle: most Width of crackle: 10mm 200 / 2800 * 100 = 7.14%
SUBJECTIVE EVALUATION	3	3	3	3
OBJECTIVE EVALUATION	b	b	b	b
TYPE OF PAVEMENT REHABILITATION	B	B	B	B



DSC00952



DSC00953



DSC00954



DSC00955

THE BASIC DESIGN STUDY ON CONSTRUCTION OF EASTERN ARTERIAL ROAD IN MONGOLIA

JAPAN INTERNATIONAL COOPERATION AGENCY (JICA)

DEPARTMENT OF ROADS,
MINISTRY OF INFRASTRUCTURE,
THE GOVERNMENT OF MONGOLIA

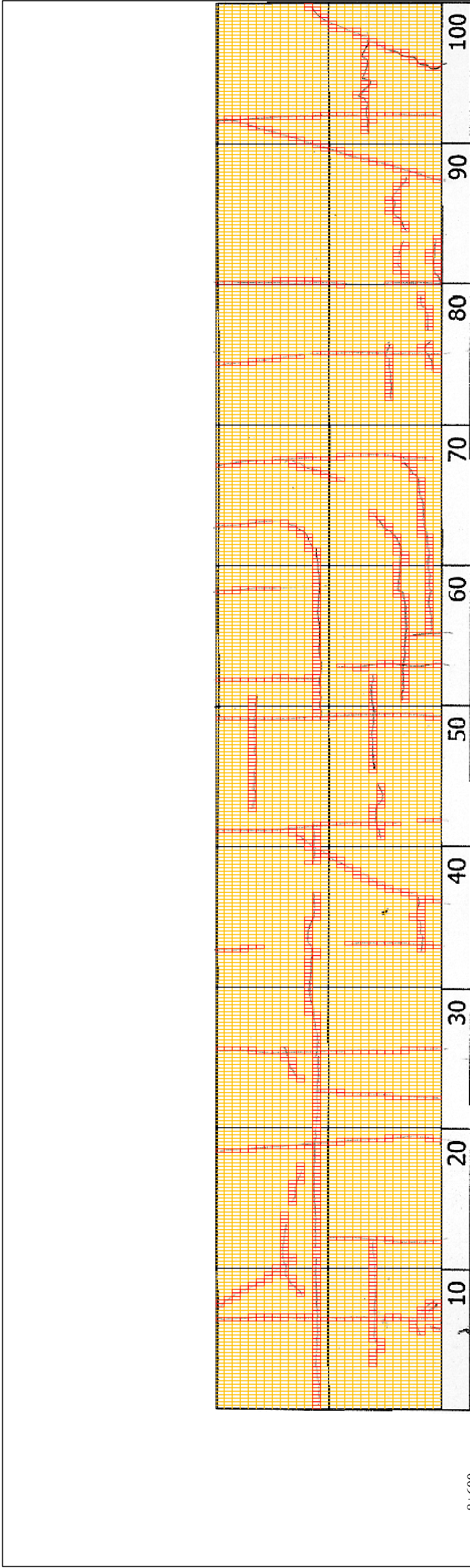
PACIFIC CONSULTANTS INTERNATIONAL
JAPAN OVERSEAS CONSULTANTS

Drawing title

8600-8700

No.

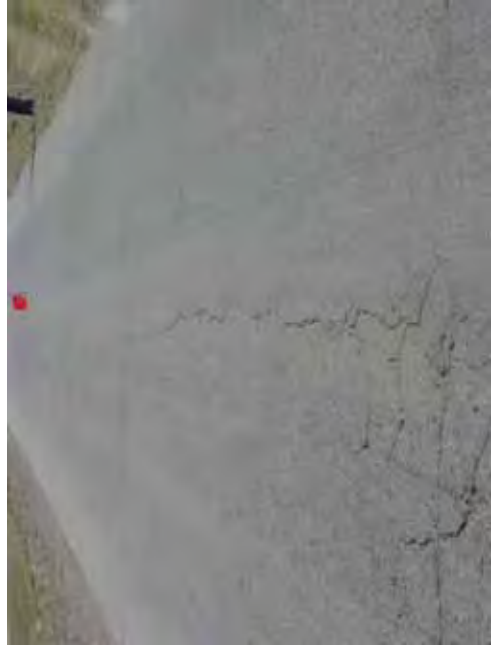
D-84



8+600	Volume of crackle: less Width of crackle: 05-10mm 326 / 2800 * 100 = 11.64%	Volume of crackle: medium Width of crackle: 05-30mm 290 / 2800 * 100 = 10.36%	Volume of crackle: medium Width of crackle: 05-10mm 316 / 2800 * 100 = 11.29%	Volume of crackle: medium Width of crackle: 05-20mm There are the most crackle in left side of the road. 254 / 2800 * 100 = 9.07%
SUBJECTIVE EVALUATION	3	3	3	3
OBJECTIVE EVALUATION	b	b	b	b
TYPE OF PAVEMENT REHABILITATION	B	B	B	B



DSC00956



DSC00957



DSC00958

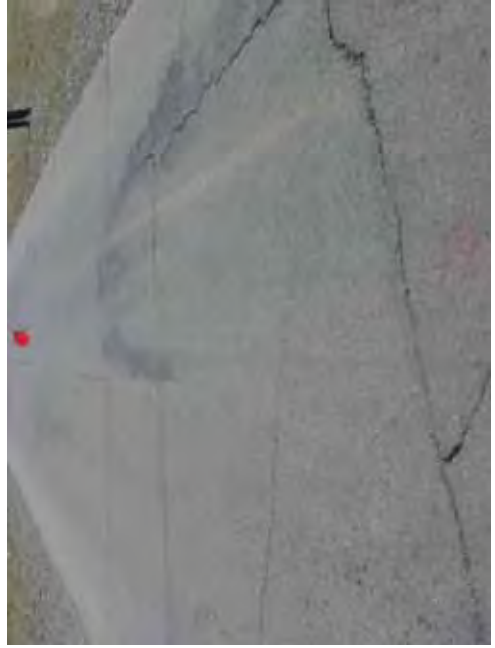


DSC00959

THE BASIC DESIGN STUDY ON CONSTRUCTION OF EASTERN ARTERIAL ROAD IN MONGOLIA	
JAPAN INTERNATIONAL COOPERATION AGENCY (JICA)	DEPARTMENT OF ROADS, MINISTRY OF INFRASTRUCTURE, THE GOVERNMENT OF MONGOLIA
PACIFIC CONSULTANTS INTERNATIONAL JAPAN OVERSEAS CONSULTANTS	
Drawing title	Scale
8700-8800	
No.	D-85



8+700	10	20	30	40	50	60	70	80	90	100
COMMENT	Volume of crackle: most Width of crackle: 05-30mm There are the most crackle in left side of the road. $325 / 2800 * 100 = 11.61\%$									
SUBJECTIVE EVALUATION	Volume of crackle: medium Width of crackle: 05-30mm There are the most crackle in central axis of the road. $199 / 2800 * 100 = 7.11\%$									
OBJECTIVE EVALUATION	Volume of crackle: medium Width of crackle: 05-50mm $276 / 2800 * 100 = 9.86\%$									
TYPE OF PAVEMENT REHABILITATION	3									
	b									
	B									



DSC00960



DSC00961

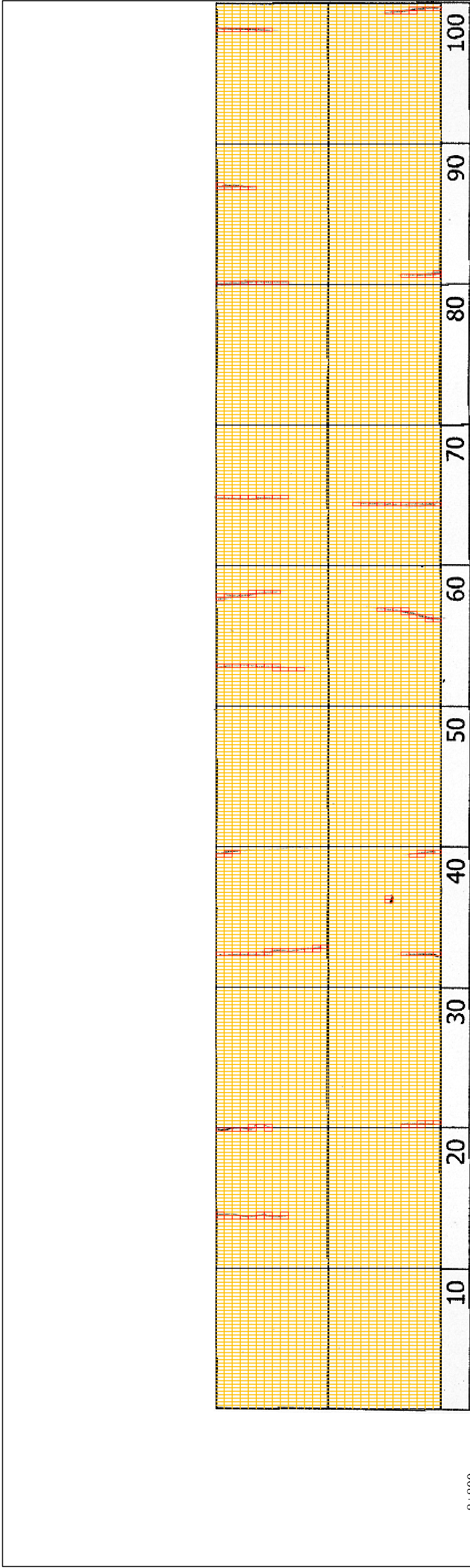


DSC00962



DSC00963

THE BASIC DESIGN STUDY ON CONSTRUCTION OF EASTERN ARTERIAL ROAD IN MONGOLIA	
JAPAN INTERNATIONAL COOPERATION AGENCY (JICA)	DEPARTMENT OF ROADS, MINISTRY OF INFRASTRUCTURE, THE GOVERNMENT OF MONGOLIA
PACIFIC CONSULTANTS INTERNATIONAL JAPAN OVERSEAS CONSULTANTS	
Drawing title	Scale
8800-8900	
No.	D-86



8-800

COMMENT	Volume of crackle: no crackle 28 / 2800 * 100 = 1.00%	Volume of crackle: less Width of crackle: 05mm 32 / 2800 * 100 = 1.14%	Volume of crackle: less Width of crackle: 05-10mm 53 / 2800 * 100 = 1.89%	Volume of crackle: less Width of crackle: 05mm 36 / 2800 * 100 = 1.29%
SUBJECTIVE EVALUATION	3	3	3	3
OBJECTIVE EVALUATION	b	b	b	b
TYPE OF PAVEMENT REHABILITATION	B	B	B	B



DSC00964



DSC00965



DSC00966



DSC00967

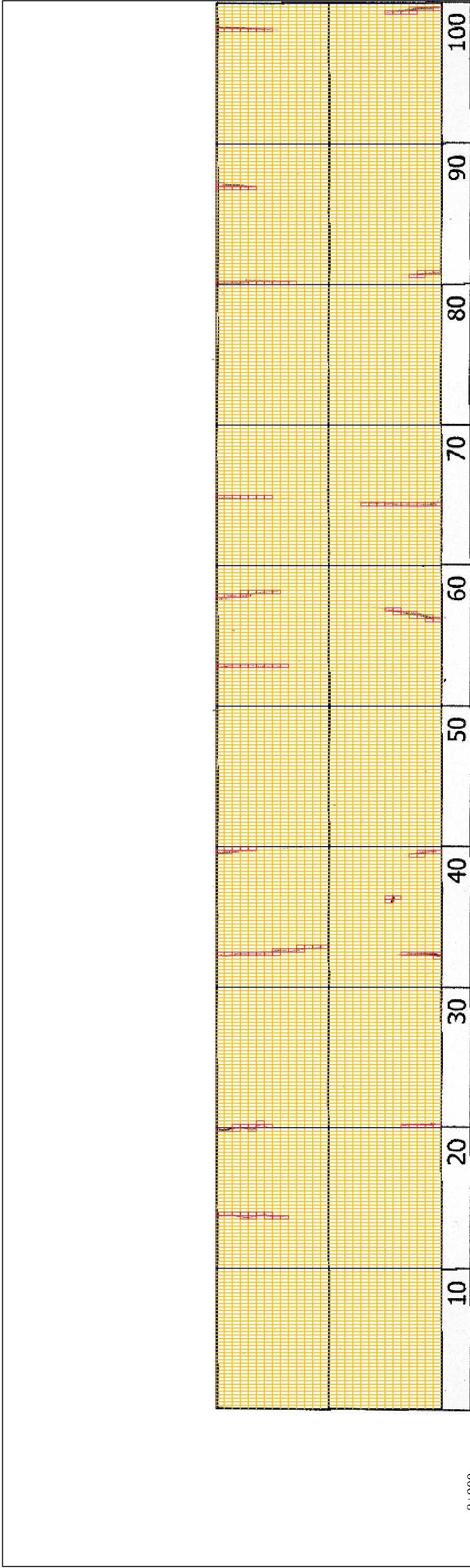
THE BASIC DESIGN STUDY ON CONSTRUCTION OF EASTERN ARTERIAL ROAD IN MONGOLIA

JAPAN INTERNATIONAL COOPERATION AGENCY (JICA)
MINISTRY OF INFRASTRUCTURE,
THE GOVERNMENT OF MONGOLIA

PACIFIC CONSULTANTS INTERNATIONAL
JAPAN OVERSEAS CONSULTANTS

Drawing title
8900-9000

No.
D-87



8+900	Volume of crackle: less Width of crackle: 05mm 27 / 2800 * 100 = 0.96%	Volume of crackle: less Width of crackle: 05mm 45 / 2800 * 100 = 1.61%	Volume of crackle: less Width of crackle: 05mm 36 / 2800 * 100 = 1.29%	Volume of crackle: less Width of crackle: 05mm 36 / 2800 * 100 = 1.29%
COMMENT	Volume of crackle: no crackle 36 / 2800 * 100 = 1.29%	Volume of crackle: less Width of crackle: 05mm 45 / 2800 * 100 = 1.61%	Volume of crackle: less Width of crackle: 05mm 36 / 2800 * 100 = 1.29%	Volume of crackle: less Width of crackle: 05mm 36 / 2800 * 100 = 1.29%
SUBJECTIVE EVALUATION	3	3	3	3
OBJECTIVE EVALUATION	b	b	b	b
TYPE OF PAVEMENT REHABILITATION	B	B	B	B



DSC00968



DSC00969



DSC00970



DSC00971

THE BASIC DESIGN STUDY ON CONSTRUCTION OF EASTERN ARTERIAL ROAD IN MONGOLIA	
JAPAN INTERNATIONAL COOPERATION AGENCY (JICA)	DEPARTMENT OF ROADS, MINISTRY OF INFRASTRUCTURE, THE GOVERNMENT OF MONGOLIA
PACIFIC CONSULTANTS INTERNATIONAL JAPAN OVERSEAS CONSULTANTS	
Drawing title	Scale
9000-9100	
No.	D-88