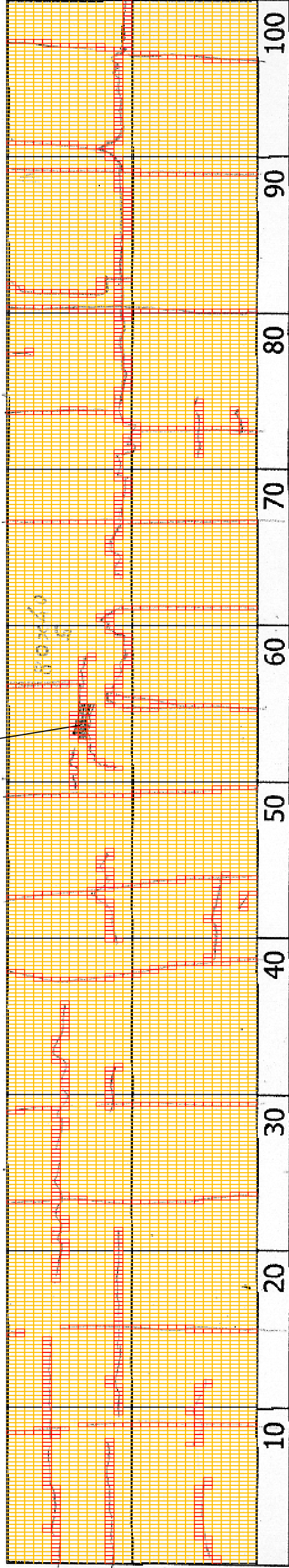


DSC00934



8+000

| | | | | |
|---------------------------------|---|--|--|---|
| COMMENT | Volume of crackle: medium Width of crackle: 05-10mm There are the most crackle in central axis of the road. 233 / 2800 * 100 = 8.32% | Volume of crackle: medium Width of crackle: 05-30mm There is a pothole in + 8155 metre. (800*400*50mm) 278 / 2800 * 100 = 9.93% | Volume of crackle: less Width of crackle: 05-40mm 245 / 2800 * 100 = 8.75% | Volume of crackle: medium Width of crackle: 05-25mm 305 / 2800 * 100 = 10.89% |
| SUBJECTIVE EVALUATION | 3 | 3 | 3 | 3 |
| OBJECTIVE EVALUATION | b | b, c | b | b |
| TYPE OF PAVEMENT REHABILITATION | B | B | B | B |



DSC00931



DSC00932



DSC00933



DSC00935

THE BASIC DESIGN STUDY ON CONSTRUCTION OF EASTERN ARTERIAL ROAD IN MONGOLIA

JAPAN INTERNATIONAL COOPERATION AGENCY (JICA)

DEPARTMENT OF ROADS,
MINISTRY OF INFRASTRUCTURE,
THE GOVERNMENT OF MONGOLIA

PACIFIC CONSULTANTS INTERNATIONAL
JAPAN OVERSEAS CONSULTANTS

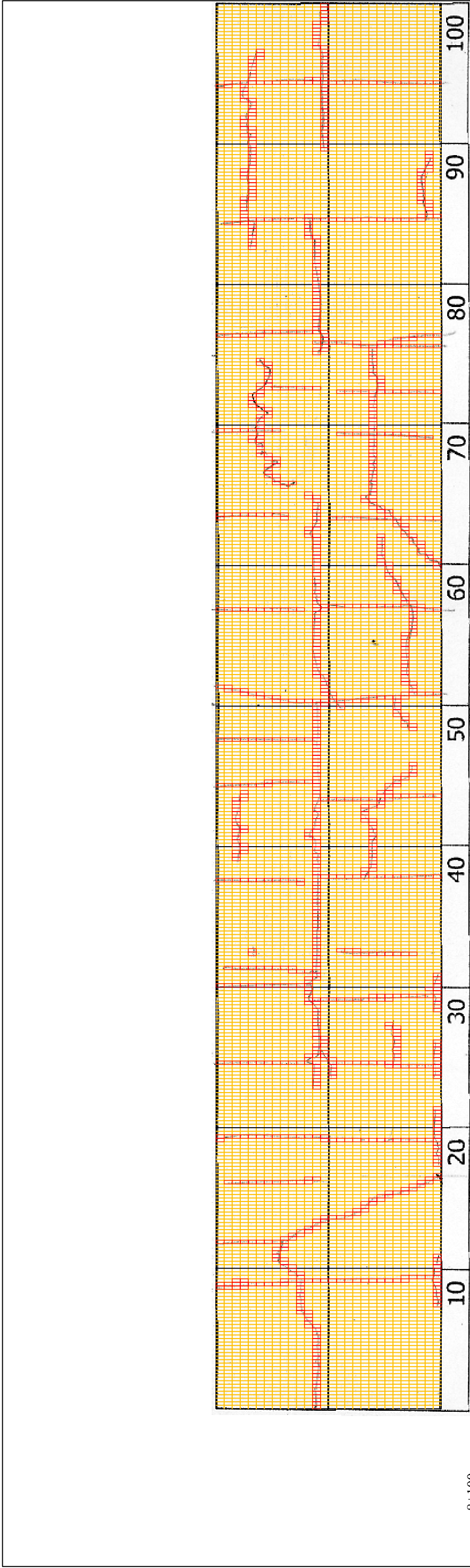
Drawing title

8100-8200

No.

D-79

Scale



8+100

| | | | | |
|---------------------------------|--|--|---|--|
| COMMENT | Volume of crackle: less Width of crackle: 05-10mm 257 / 2800 * 100 = 9.18% | Volume of crackle: medium Width of crackle: 10mm 333 / 2800 * 100 = 11.89% | Volume of crackle: medium Width of crackle: 05-10mm 365 / 2800 * 100 = 13.04% | Volume of crackle: medium Width of crackle: 10-90mm 269 / 2800 * 100 = 9.61% |
| SUBJECTIVE EVALUATION | 3 | 3 | 3 | 3 |
| OBJECTIVE EVALUATION | b | b | b | b |
| TYPE OF PAVEMENT REHABILITATION | B | B | B | B |



DSC00936



DSC00937



DSC00938



DSC00939

THE BASIC DESIGN STUDY ON CONSTRUCTION OF EASTERN ARTERIAL ROAD IN MONGOLIA

JAPAN INTERNATIONAL COOPERATION AGENCY (JICA)

DEPARTMENT OF ROADS,
MINISTRY OF INFRASTRUCTURE,
THE GOVERNMENT OF MONGOLIA

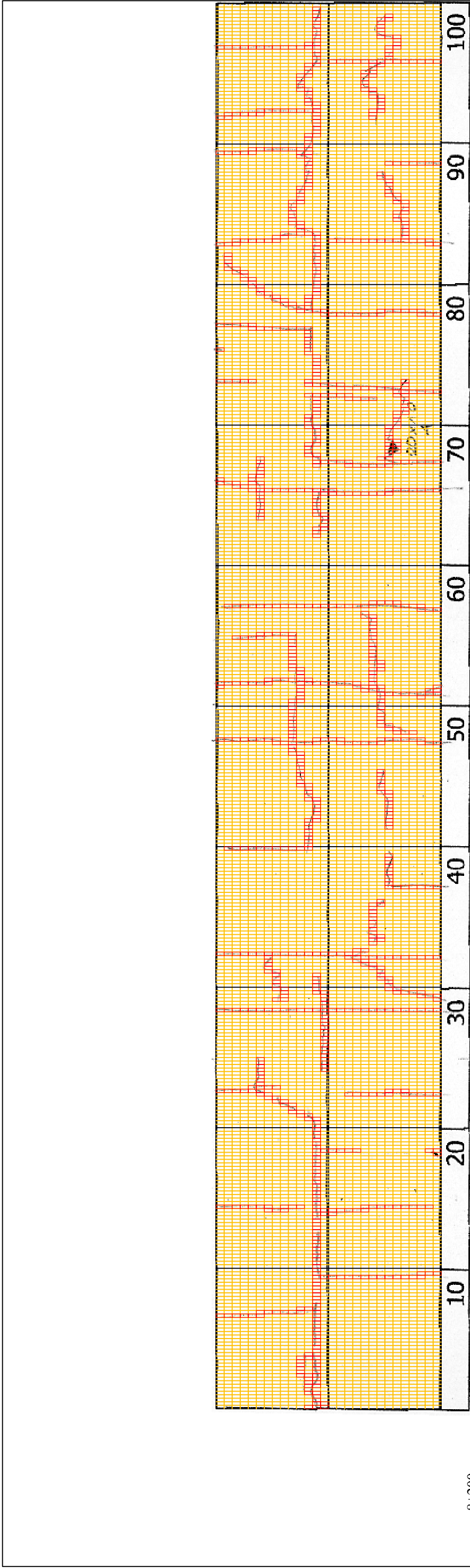
PACIFIC CONSULTANTS INTERNATIONAL
JAPAN OVERSEAS CONSULTANTS

Drawing title

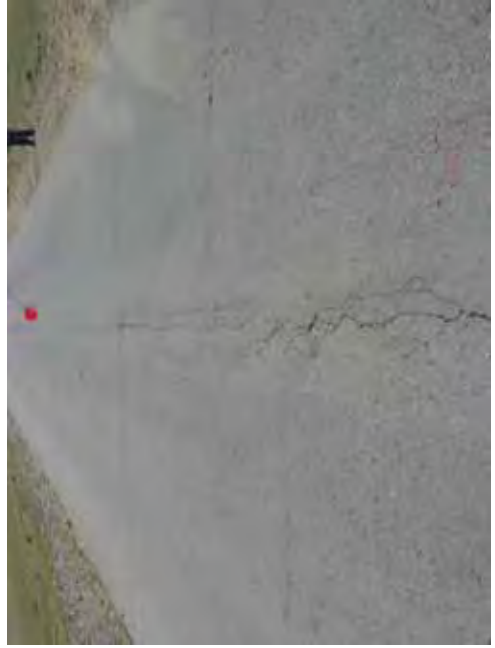
82/00-83/00

No.

D-80



| | | | | | | | | | | |
|---------------------------------|--|----|----|----|----|----|----|----|----|-----|
| 8+200 | 10 | 20 | 30 | 40 | 50 | 60 | 70 | 80 | 90 | 100 |
| COMMENT | Volume of crackle: medium Width of crackle: 5-15mm There are the most crackle in central axis of the road. $318 / 2800 * 100 = 11.36\%$ | | | | | | | | | |
| SUBJECTIVE EVALUATION | Volume of crackle: medium Width of crackle: 05-10mm There is a pothole in + 8366 metre. (200*100*40mm) $307 / 2800 * 100 = 10.96\%$ | | | | | | | | | |
| OBJECTIVE EVALUATION | Volume of crackle: less Width of crackle: 05-20mm $271 / 2800 * 100 = 9.68\%$ | | | | | | | | | |
| TYPE OF PAVEMENT REHABILITATION | 3 | | | | | | | | | |
| | b | | | | | | | | | |
| | B | | | | | | | | | |



DSC00940



DSC00941

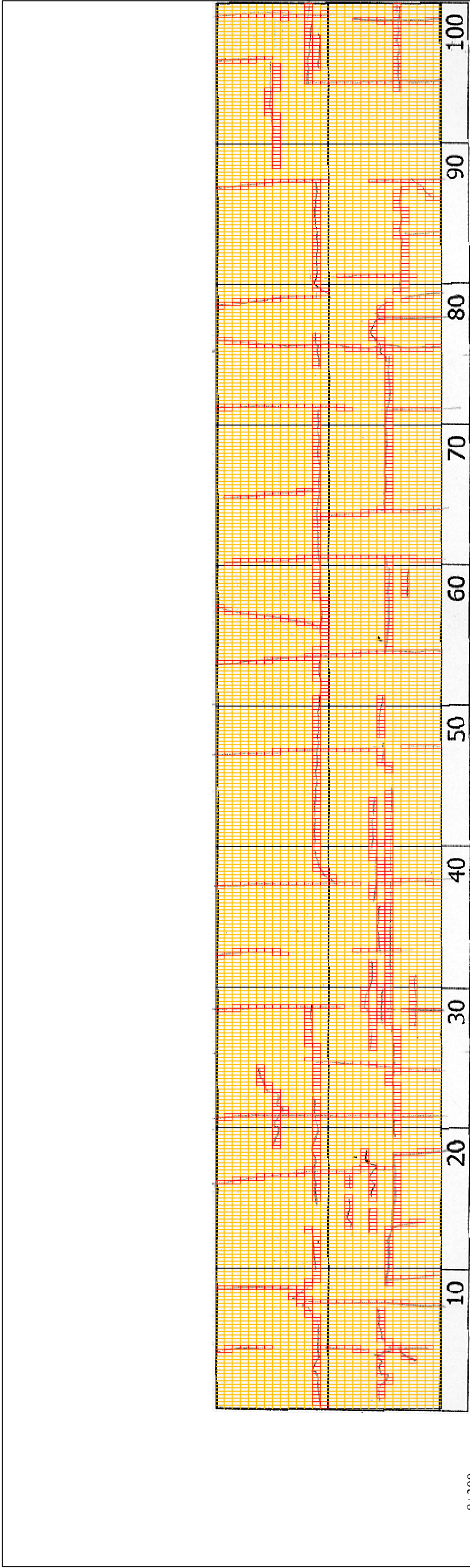


DSC00942



DSC00943

| | |
|---|---|
| THE BASIC DESIGN STUDY ON CONSTRUCTION OF EASTERN ARTERIAL ROAD IN MONGOLIA | |
| JAPAN INTERNATIONAL COOPERATION AGENCY (JICA) | DEPARTMENT OF ROADS, MINISTRY OF INFRASTRUCTURE, THE GOVERNMENT OF MONGOLIA |
| PACIFIC CONSULTANTS INTERNATIONAL JAPAN OVERSEAS CONSULTANTS | |
| Drawing title | Scale |
| 8300-8400 | |
| No. | D-81 |



| | | | | | | | | | | |
|---------------------------------|---|----|----|----|----|----|----|----|----|-----|
| 8+300 | 10 | 20 | 30 | 40 | 50 | 60 | 70 | 80 | 90 | 100 |
| COMMENT | Volume of crackle: most Width of crackle: 10-25mm There are the most crackle in left side of the road. 398 / 2800 * 100 = 14.21% | | | | | | | | | |
| SUBJECTIVE EVALUATION | Volume of crackle: medium Width of crackle: 05-20mm There are the most crackle in left side of the road. 311 / 2800 * 100 = 11.11% | | | | | | | | | |
| OBJECTIVE EVALUATION | Volume of crackle: medium Width of crackle: 05-20mm There are the most crackle in left side of the road. 346 / 2800 * 100 = 12.36% | | | | | | | | | |
| TYPE OF PAVEMENT REHABILITATION | 3 b B | | | | | | | | | |



DSC00944



DSC00945



DSC00947



DSC00843

| | |
|---|---|
| THE BASIC DESIGN STUDY ON CONSTRUCTION OF EASTERN ARTERIAL ROAD IN MONGOLIA | |
| JAPAN INTERNATIONAL COOPERATION AGENCY (JICA) | DEPARTMENT OF ROADS, MINISTRY OF INFRASTRUCTURE, THE GOVERNMENT OF MONGOLIA |
| PACIFIC CONSULTANTS INTERNATIONAL JAPAN OVERSEAS CONSULTANTS | |
| Drawing title | Scale |
| 8400-8500 | |
| No. | D-82 |

