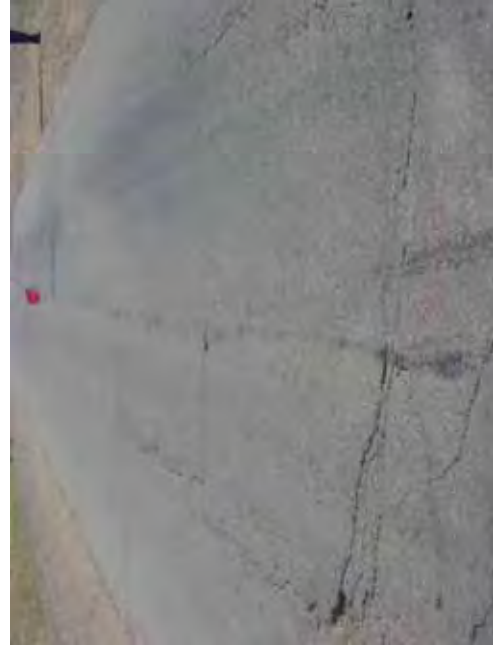


6+900

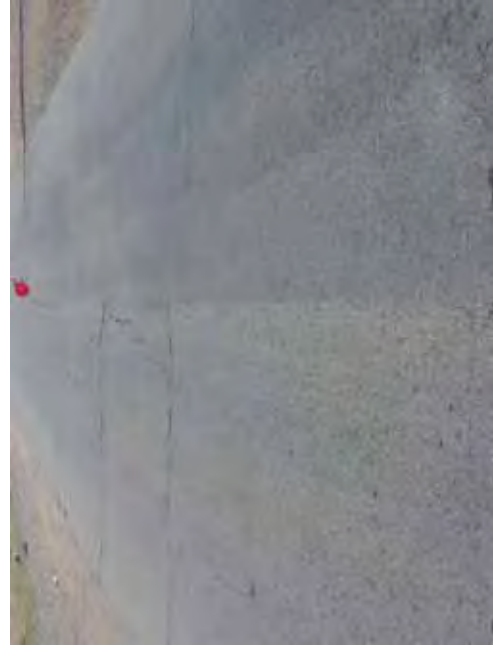
COMMENT	Volume of crackle: medium Width of crackle: 05-40mm There is a pothole in + 7002 metre. (150*80*30mm) 270 / 2800 * 100 = 9.64%	Volume of crackle: medium Width of crackle: 05-50mm 213 / 2800 * 100 = 7.61%	Volume of crackle: medium Width of crackle: 05-60mm 307 / 2800 * 100 = 10.96%	Volume of crackle: less Width of crackle: 05-20mm 249 / 2800 * 100 = 8.89%
SUBJECTIVE EVALUATION	3	3	3	3
OBJECTIVE EVALUATION	b, c	b	b	b
TYPE OF PAVEMENT REHABILITATION	B	B	B	B



DSC00885



DSC00886



DSC00887



DSC00888

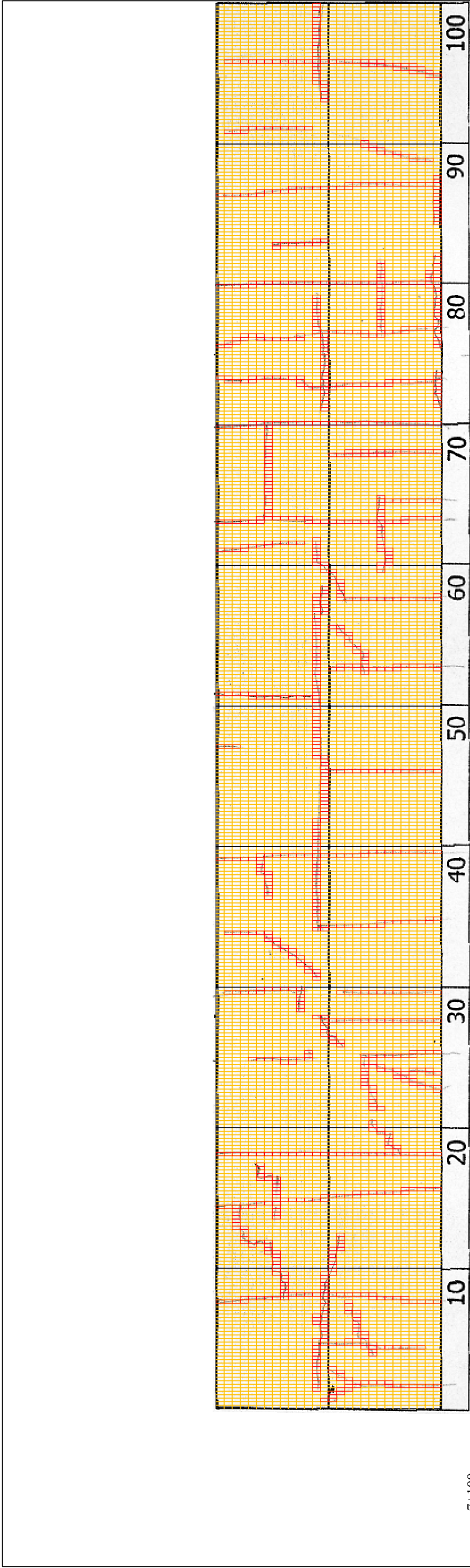
THE BASIC DESIGN STUDY ON CONSTRUCTION OF EASTERN ARTERIAL ROAD IN MONGOLIA

JAPAN INTERNATIONAL COOPERATION AGENCY (JICA)
MINISTRY OF INFRASTRUCTURE,
THE GOVERNMENT OF MONGOLIA

PACIFIC CONSULTANTS INTERNATIONAL
JAPAN OVERSEAS CONSULTANTS

Drawing title
7000-7100

No.
D-68



7+100

COMMENT	Volume of crackle: medium Width of crackle: 05-30mm 316 / 2800 * 100 = 11.29%	Volume of crackle: medium Width of crackle: 05-50mm 236 / 2800 * 100 = 8.43%	Volume of crackle: medium Width of crackle: 05-20mm 329 / 2800 * 100 = 11.75%	Volume of crackle: medium Width of crackle: 05-15mm 270 / 2800 * 100 = 9.64%
SUBJECTIVE EVALUATION	3	3	3	3
OBJECTIVE EVALUATION	b	b	b	b
TYPE OF PAVEMENT REHABILITATION	B	B	B	B



DSC00894



DSC00895

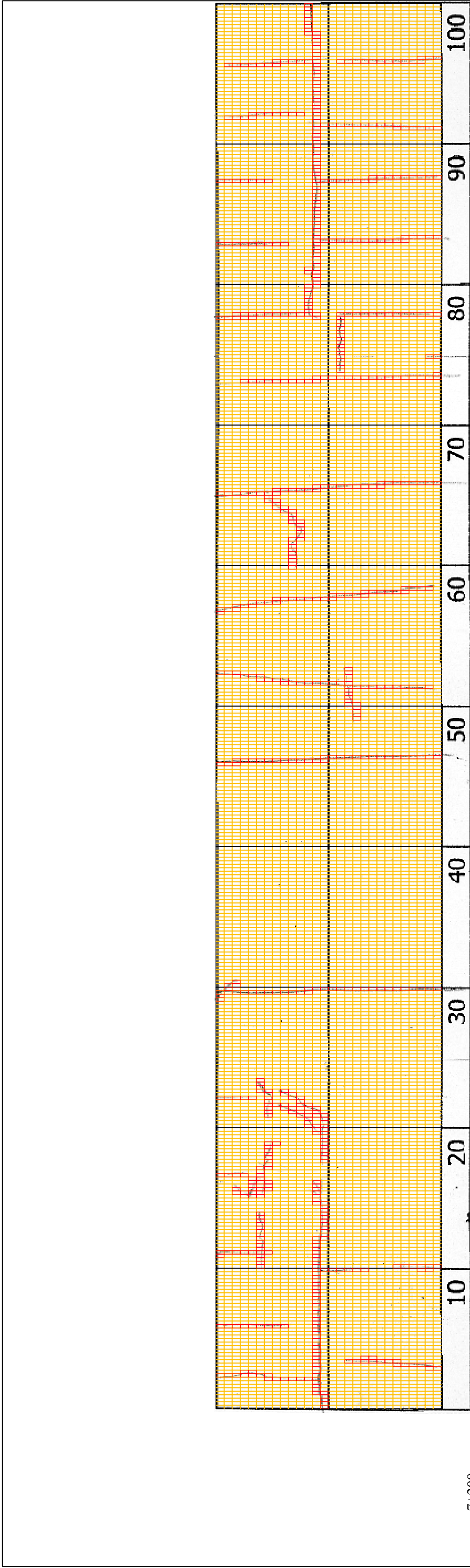


DSC00896



DSC00897

THE BASIC DESIGN STUDY ON CONSTRUCTION OF EASTERN ARTERIAL ROAD IN MONGOLIA	
JAPAN INTERNATIONAL COOPERATION AGENCY (JICA)	DEPARTMENT OF ROADS, MINISTRY OF INFRASTRUCTURE, THE GOVERNMENT OF MONGOLIA
PACIFIC CONSULTANTS INTERNATIONAL JAPAN OVERSEAS CONSULTANTS	
Drawing title	7200-7300
Scale	No.
	D-70



7+200

COMMENT	Volume of crackle: less Width of crackle: 05-10mm 236 / 2800 * 100 = 8.43%	Volume of crackle: less Width of crackle: 05-10mm 70 / 2800 * 100 = 2.50%	Volume of crackle: less Width of crackle: 05mm 166 / 2800 * 100 = 5.93%	Volume of crackle: less Width of crackle: 05-10mm 234 / 2800 * 100 = 8.36%
SUBJECTIVE EVALUATION	3	3	3	3
OBJECTIVE EVALUATION	b	b	b	b
TYPE OF PAVEMENT REHABILITATION	B	B	B	B



DSC00898



DSC00899



DSC00900



DSC00901

THE BASIC DESIGN STUDY ON CONSTRUCTION OF EASTERN ARTERIAL ROAD IN MONGOLIA

JAPAN INTERNATIONAL COOPERATION AGENCY (JICA)

DEPARTMENT OF ROADS,
MINISTRY OF INFRASTRUCTURE,
THE GOVERNMENT OF MONGOLIA

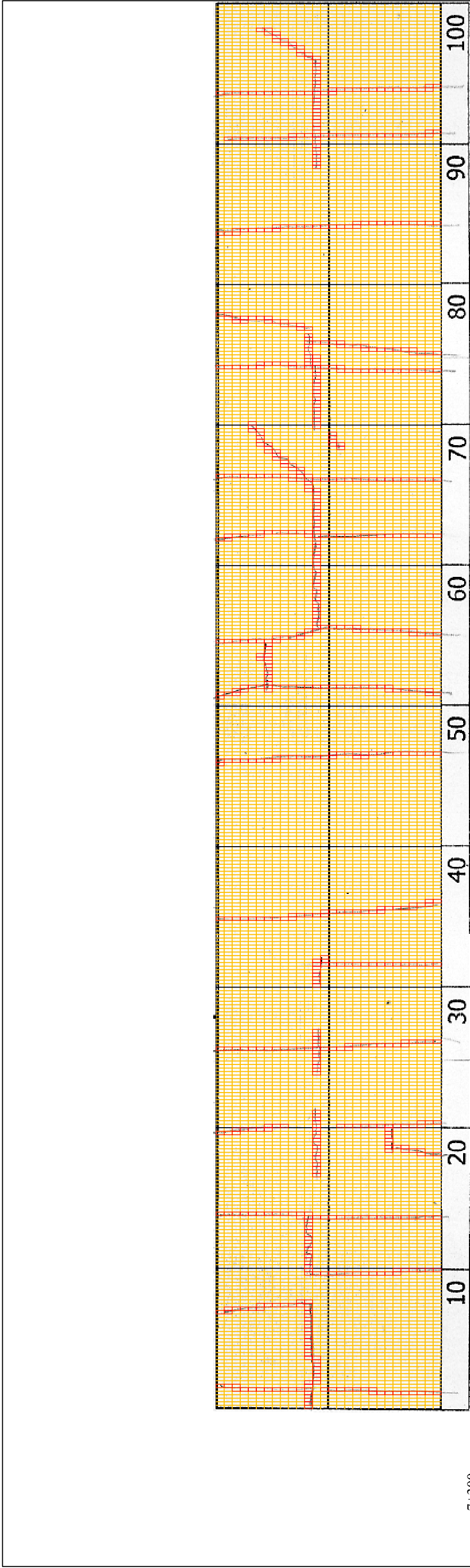
PACIFIC CONSULTANTS INTERNATIONAL
JAPAN OVERSEAS CONSULTANTS

Drawing title

7300-7400

No.

D-71



7+300

COMMENT	Volume of crackle: less Width of crackle: 05-10mm $202 / 2800 * 100 = 7.21\%$	Volume of crackle: less Width of crackle: 05-15mm $128 / 2800 * 100 = 4.57\%$	Volume of crackle: medium Width of crackle: 05-10mm $266 / 2800 * 100 = 9.50\%$	Volume of crackle: less Width of crackle: 05-10mm $178 / 2800 * 100 = 6.36\%$
SUBJECTIVE EVALUATION	3	3	3	3
OBJECTIVE EVALUATION	b	b	b	b
TYPE OF PAVEMENT REHABILITATION	B	B	B	B



DSC00902



DSC00903



DSC00904



DSC00905

THE BASIC DESIGN STUDY ON CONSTRUCTION OF EASTERN ARTERIAL ROAD IN MONGOLIA	
JAPAN INTERNATIONAL COOPERATION AGENCY (JICA)	DEPARTMENT OF ROADS, MINISTRY OF INFRASTRUCTURE, THE GOVERNMENT OF MONGOLIA
PACIFIC CONSULTANTS INTERNATIONAL JAPAN OVERSEAS CONSULTANTS	
Drawing title	Scale
7400-7500	No. D-72