

4+900

COMMENT	Volume of crackle: less Width of crackle: 05-20mm 136 / 2800 * 100 = 4.86%	Volume of crackle: medium Width of crackle: 05-30mm 252 / 2800 * 100 = 9.00%	Volume of crackle: medium Width of crackle: 05-50mm 258 / 2800 * 100 = 9.21%	Volume of crackle: less Width of crackle: 05-40mm 307 / 2800 * 100 = 10.96%
SUBJECTIVE EVALUATION	3	3	3	3
OBJECTIVE EVALUATION	b	b	b	b
TYPE OF PAVEMENT REHABILITATION	B	B	B	B



DSC00798



DSC00799



DSC00800



DSC00801

THE BASIC DESIGN STUDY ON CONSTRUCTION OF EASTERN ARTERIAL ROAD IN MONGOLIA

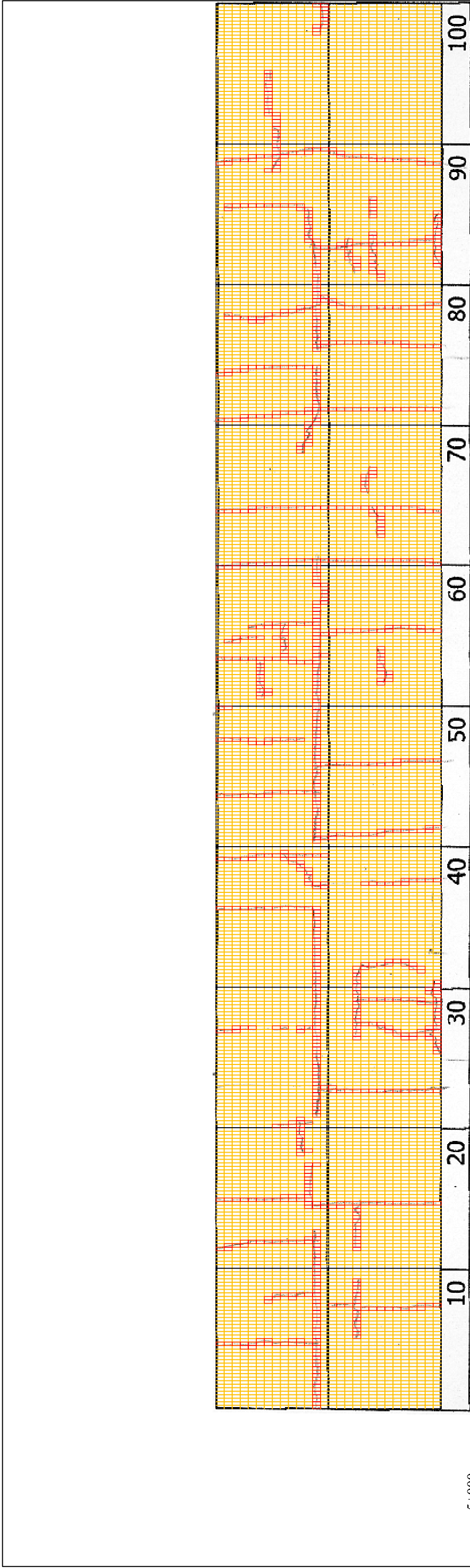
JAPAN INTERNATIONAL COOPERATION AGENCY (JICA)  
PACIFIC CONSULTANTS INTERNATIONAL  
JAPAN OVERSEAS CONSULTANTS

DEPARTMENT OF ROADS,  
MINISTRY OF INFRASTRUCTURE,  
THE GOVERNMENT OF MONGOLIA

Scale  
5000-5100

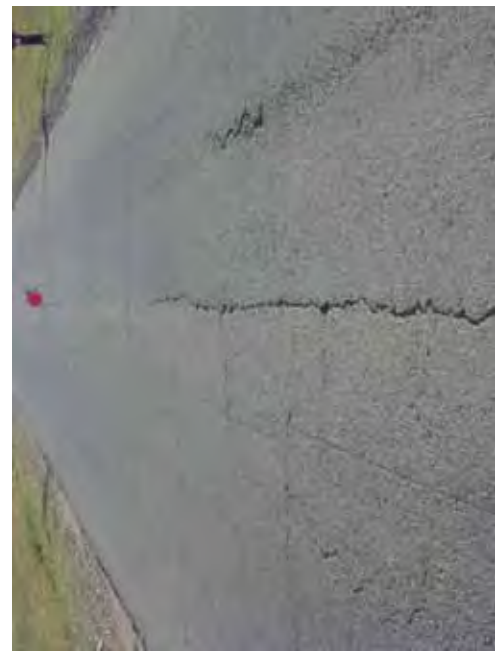
No.  
D-48





5+000

COMMENT	Volume of crackle: less Width of crackle: 05-15mm 234 / 2800 * 100 = 8.36%	Volume of crackle: less Width of crackle: 05-20mm 276 / 2800 * 100 = 9.86%	Volume of crackle: less Width of crackle: 05-15mm 293 / 2800 * 100 = 10.46%	Volume of crackle: less Width of crackle: 05-20mm 246 / 2800 * 100 = 8.79%
SUBJECTIVE EVALUATION	3	3	3	3
OBJECTIVE EVALUATION	b, d	b	b	b
TYPE OF PAVEMENT REHABILITATION	B	B	B	B



DSC00802



DSC00803



DSC00804



DSC00805

THE BASIC DESIGN STUDY ON CONSTRUCTION OF EASTERN ARTERIAL ROAD IN MONGOLIA

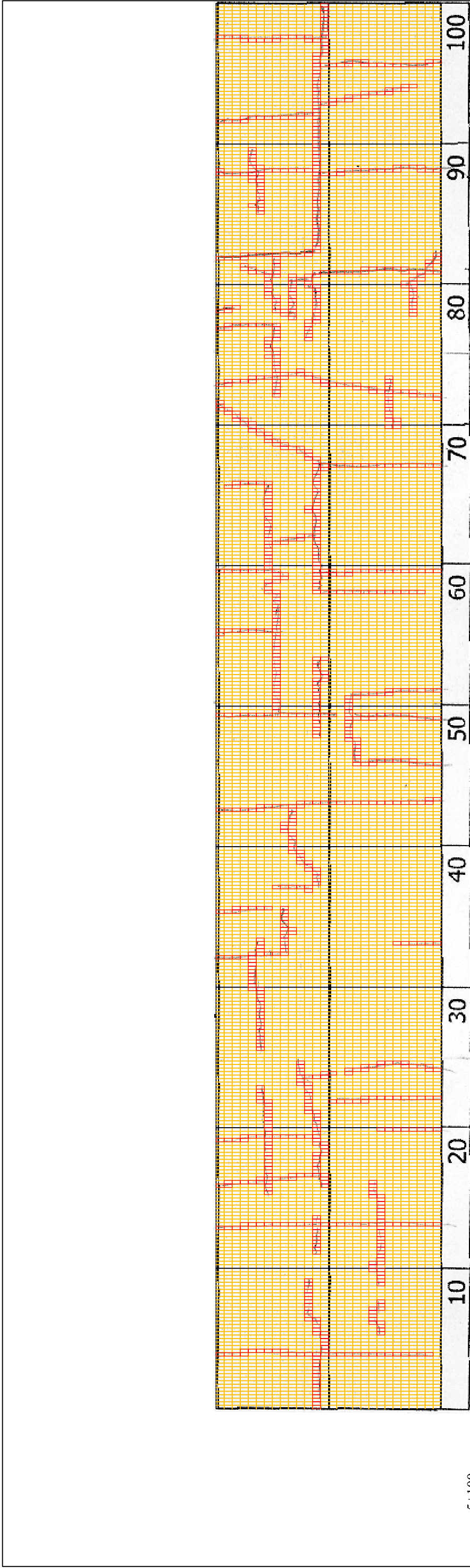
JAPAN INTERNATIONAL COOPERATION AGENCY (JICA)  
MINISTRY OF INFRASTRUCTURE,  
THE GOVERNMENT OF MONGOLIA

PACIFIC CONSULTANTS INTERNATIONAL  
JAPAN OVERSEAS CONSULTANTS

Drawing title  
5100-5200

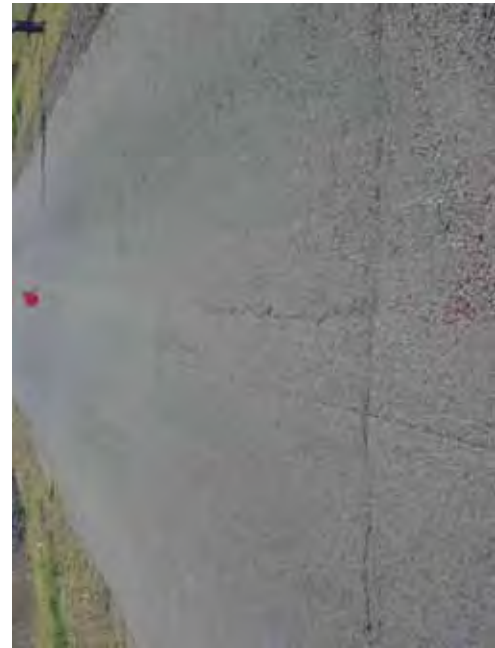
No.  
D-49





5+100

COMMENT	Volume of crackle: less Width of crackle: 05-10mm 294 / 2800 * 100 = 10.50%	Volume of crackle: less Width of crackle: 05-10mm 204 / 2800 * 100 = 7.29%	Volume of crackle: less Width of crackle: 05-15mm 312 / 2800 * 100 = 11.14%	Volume of crackle: medium Width of crackle: 05-25mm 329 / 2800 * 100 = 11.75%
SUBJECTIVE EVALUATION	3	3	3	3
OBJECTIVE EVALUATION	b	b	b	b
TYPE OF PAVEMENT REHABILITATION	B	B	B	B



DSC00806



DSC00807



DSC00808



DSC00809

THE BASIC DESIGN STUDY ON CONSTRUCTION OF EASTERN ARTERIAL ROAD IN MONGOLIA

JAPAN INTERNATIONAL COOPERATION AGENCY (JICA)

DEPARTMENT OF ROADS,  
MINISTRY OF INFRASTRUCTURE,  
THE GOVERNMENT OF MONGOLIA

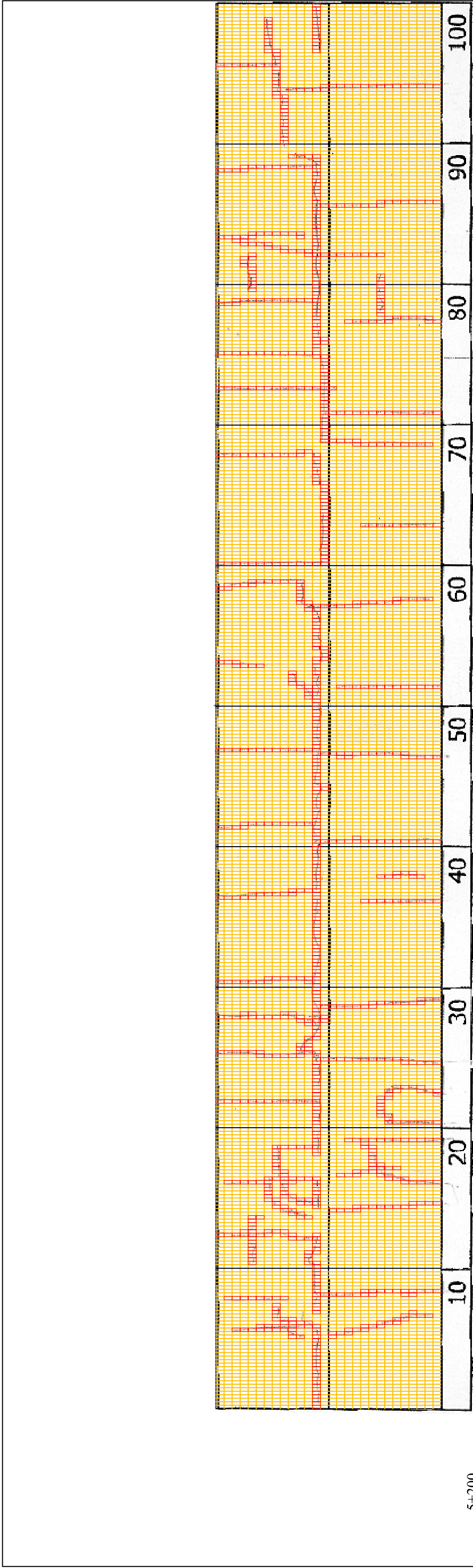
PACIFIC CONSULTANTS INTERNATIONAL  
JAPAN OVERSEAS CONSULTANTS

Drawing title

5200-5300

No.

D-50

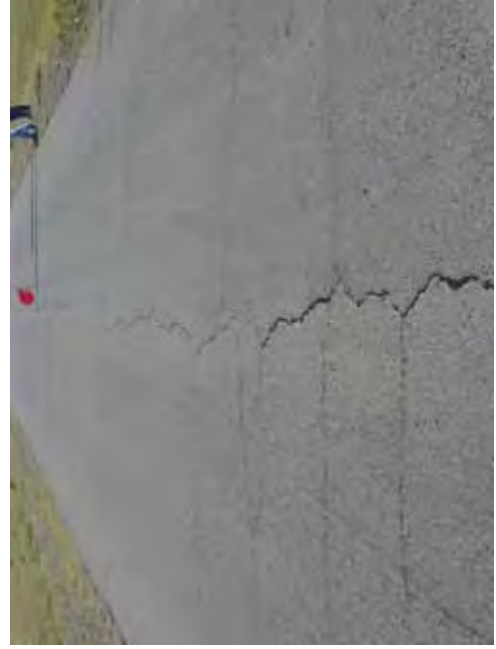


5+200

COMMENT	Volume of crackle: medium Width of crackle: 05-30mm 358 / 2800 * 100 = 12.79%	Volume of crackle: medium Width of crackle: 05-15mm 261 / 2800 * 100 = 9.32%	Volume of crackle: medium Width of crackle: 05-10mm 236 / 2800 * 100 = 8.43%	Volume of crackle: less Width of crackle: 05-20mm 270 / 2800 * 100 = 9.64%
SUBJECTIVE EVALUATION	3	3	3	3
OBJECTIVE EVALUATION	b	b	b	b
TYPE OF PAVEMENT REHABILITATION	B	B	B	B



DSC00810



DSC00811



DSC00812



DSC00813

THE BASIC DESIGN STUDY ON CONSTRUCTION OF EASTERN ARTERIAL ROAD IN MONGOLIA

JAPAN INTERNATIONAL COOPERATION AGENCY (JICA)  
MINISTRY OF INFRASTRUCTURE,  
THE GOVERNMENT OF MONGOLIA

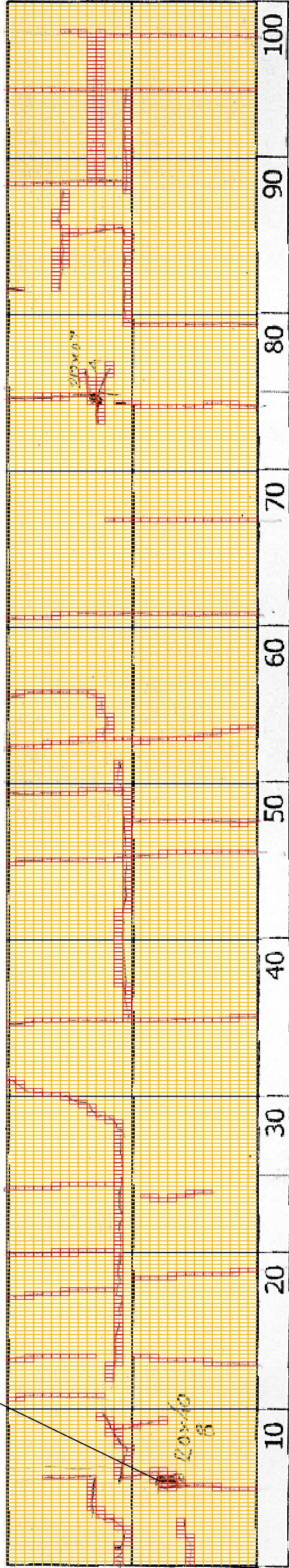
PACIFIC CONSULTANTS INTERNATIONAL  
JAPAN OVERSEAS CONSULTANTS

Scale  
5300-5400

No.  
D-51



DSC00814



5+300

COMMENT	Volume of crackle: medium Width of crackle: 05-20mm There is a pothole in + 5406 metre. (200*400*80mm) 268 / 2800 * 100 = 9.57%	Volume of crackle: less Width of crackle: 05-15mm 190 / 2800 * 100 = 6.79%	Volume of crackle: less Width of crackle: 05-10mm There is a pothole in + 5475 metre. (200*40*40mm) 155 / 2800 * 100 = 5.54%	Volume of crackle: less Width of crackle: 05-20mm 262 / 2800 * 100 = 9.36%
SUBJECTIVE EVALUATION	3	3	3	3
OBJECTIVE EVALUATION	b, c	b	b	b, c, d
TYPE OF PAVEMENT REHABILITATION	B	B	B	B



DSC00814



DSC00815



DSC00816



DSC00817

THE BASIC DESIGN STUDY ON CONSTRUCTION OF EASTERN ARTERIAL ROAD IN MONGOLIA

JAPAN INTERNATIONAL COOPERATION AGENCY (JICA)  
MINISTRY OF INFRASTRUCTURE,  
THE GOVERNMENT OF MONGOLIA

PACIFIC CONSULTANTS INTERNATIONAL  
JAPAN OVERSEAS CONSULTANTS

Scale

5400-5500

No.

D-52