

4+400

COMMENT	Volume of crackle: medium Width of crackle: 05-100mm There is a pothole in + 4513 metre. (500*70*50mm) 304 / 2800 * 100 = 10.86%	Volume of crackle: medium Width of crackle: 05-30mm 322 / 2800 * 100 = 11.50%	Volume of crackle: less Width of crackle: 05-10mm 381 / 2800 * 100 = 13.61%	Volume of crackle: less Width of crackle: 05-15mm 286 / 2800 * 100 = 10.21%
SUBJECTIVE EVALUATION	4	4	3	3
OBJECTIVE EVALUATION	b, c, d	b, d	b, d	b, d
TYPE OF PAVEMENT REHABILITATION	B	B	B	B



DSC00776



DSC00778



DSC00779



DSC00780

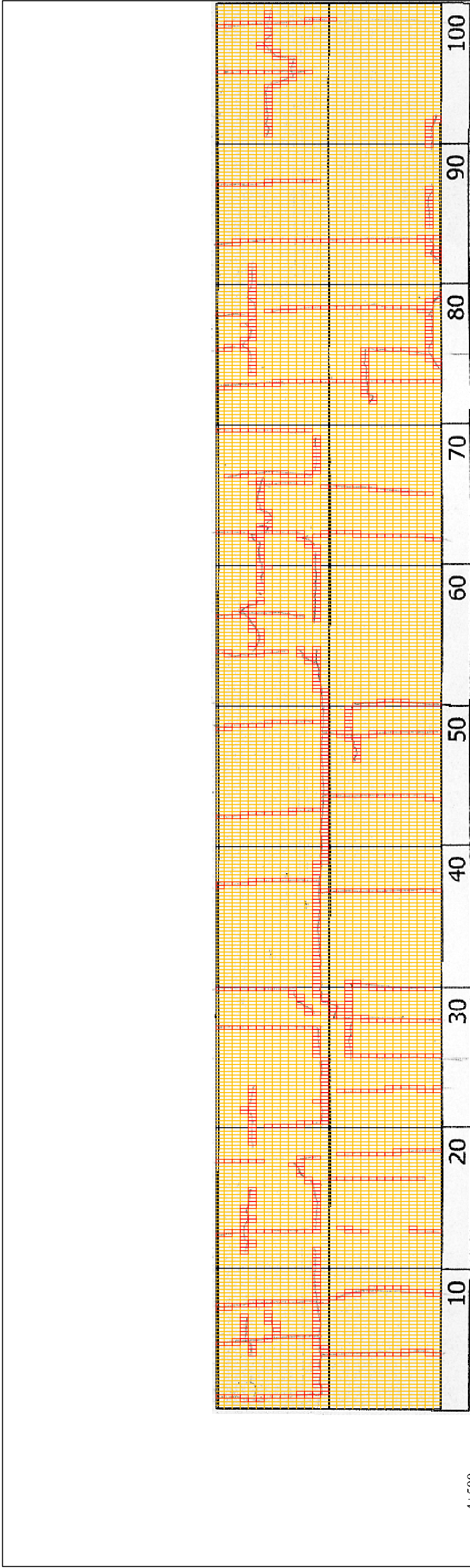
THE BASIC DESIGN STUDY ON CONSTRUCTION OF EASTERN ARTERIAL ROAD IN MONGOLIA

JAPAN INTERNATIONAL COOPERATION AGENCY (JICA)  
MINISTRY OF INFRASTRUCTURE,  
THE GOVERNMENT OF MONGOLIA

PACIFIC CONSULTANTS INTERNATIONAL  
JAPAN OVERSEAS CONSULTANTS

Drawing title  
4500-4600

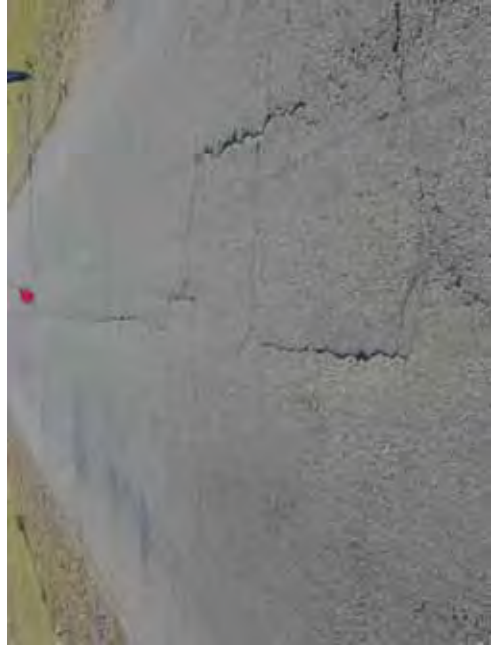
No.  
D-43



4+500	10	20	30	40	50	60	70	80	90	100	
COMMENT	Volume of crackle: less Width of crackle: 05-10mm 317 / 2800 * 100 = 11.32%										
SUBJECTIVE EVALUATION	Volume of crackle: less Width of crackle: 05-10mm 290 / 2800 * 100 = 10.36%										
OBJECTIVE EVALUATION	Volume of crackle: less Width of crackle: 05-10mm 236 / 2800 * 100 = 8.43%										
TYPE OF PAVEMENT REHABILITATION	B										



DSC00781



DSC00782

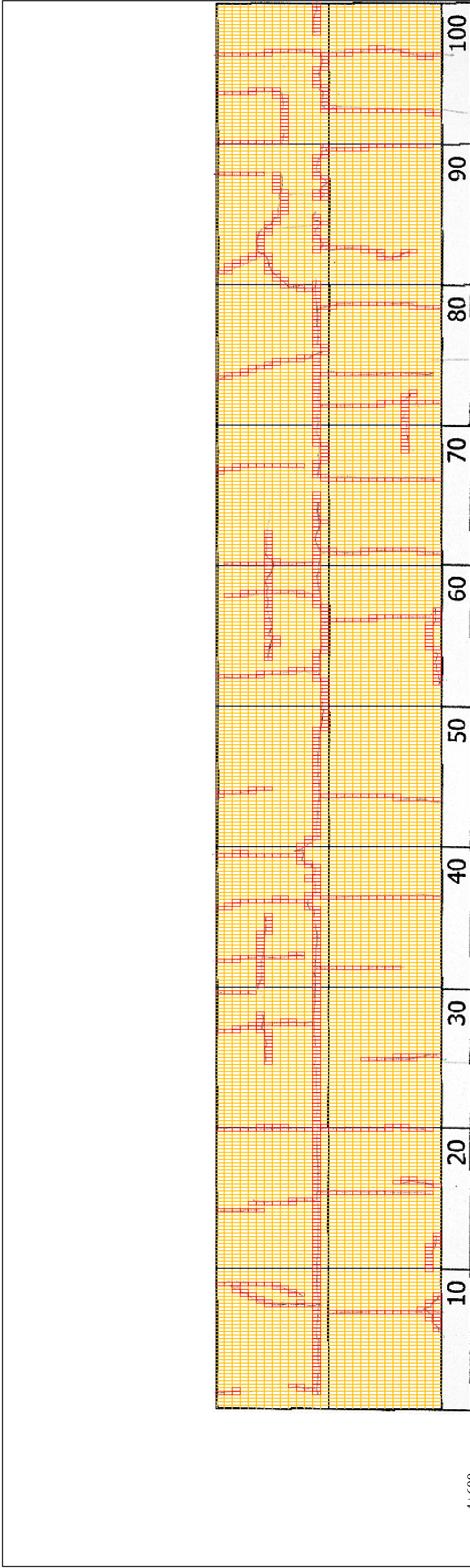


DSC00783



DSC00784

THE BASIC DESIGN STUDY ON CONSTRUCTION OF EASTERN ARTERIAL ROAD IN MONGOLIA	
JAPAN INTERNATIONAL COOPERATION AGENCY (JICA)	DEPARTMENT OF ROADS, MINISTRY OF INFRASTRUCTURE, THE GOVERNMENT OF MONGOLIA
PACIFIC CONSULTANTS INTERNATIONAL JAPAN OVERSEAS CONSULTANTS	
Drawing title	Scale
4600-4700	No. D-44



4+600	Volume of crackle: less Width of crackle: 05-10mm 254 / 2800 * 100 = 9.07%	Volume of crackle: medium Width of crackle: 05-15mm 262 / 2800 * 100 = 9.36%	Volume of crackle: less Width of crackle: 05-15mm 329 / 2800 * 100 = 11.75%	Volume of crackle: less Width of crackle: 05-10mm 277 / 2800 * 100 = 9.89%
COMMENT				
SUBJECTIVE EVALUATION	3	3	3	3
OBJECTIVE EVALUATION	b	b	b	b
TYPE OF PAVEMENT REHABILITATION	B	B	B	B



DSC00785



DSC00786



DSC00787



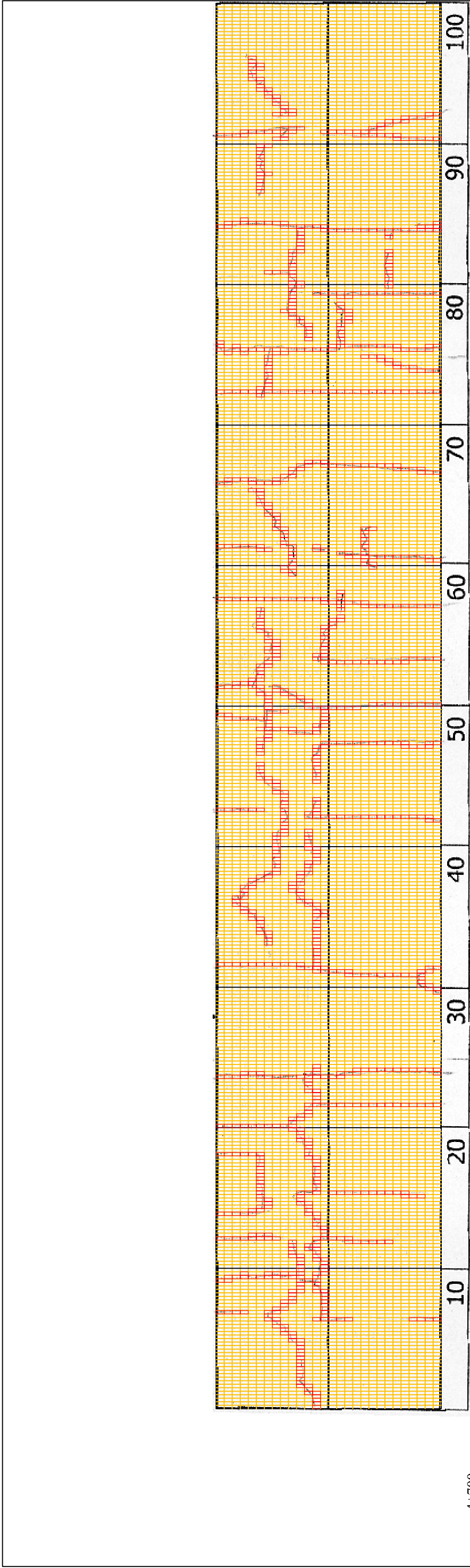
DSC00788

THE BASIC DESIGN STUDY ON CONSTRUCTION OF EASTERN ARTERIAL ROAD IN MONGOLIA

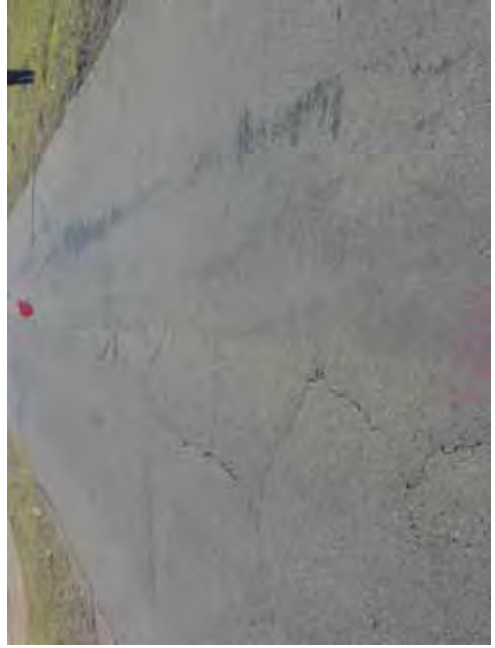
JAPAN INTERNATIONAL COOPERATION AGENCY (JICA)  
 DEPARTMENT OF ROADS,  
 MINISTRY OF INFRASTRUCTURE,  
 THE GOVERNMENT OF MONGOLIA

PACIFIC CONSULTANTS INTERNATIONAL  
 JAPAN OVERSEAS CONSULTANTS

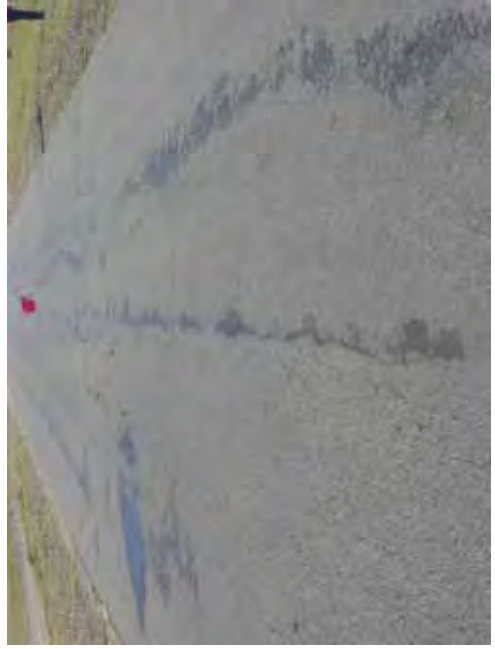
Drawing title: 4700-4800  
 Scale: No. D-45



4+700	Volume of crackle: medium Width of crackle: 05-15mm 299 / 2800 * 100 = 10.68%	Volume of crackle: medium Width of crackle: 05-20mm 293 / 2800 * 100 = 10.46%	Volume of crackle: medium Width of crackle: 05-30mm 251 / 2800 * 100 = 8.96%
COMMENT			
SUBJECTIVE EVALUATION	3	3	3
OBJECTIVE EVALUATION	b	b	b
TYPE OF PAVEMENT REHABILITATION	B	B	B



DSC00789



DSC00790



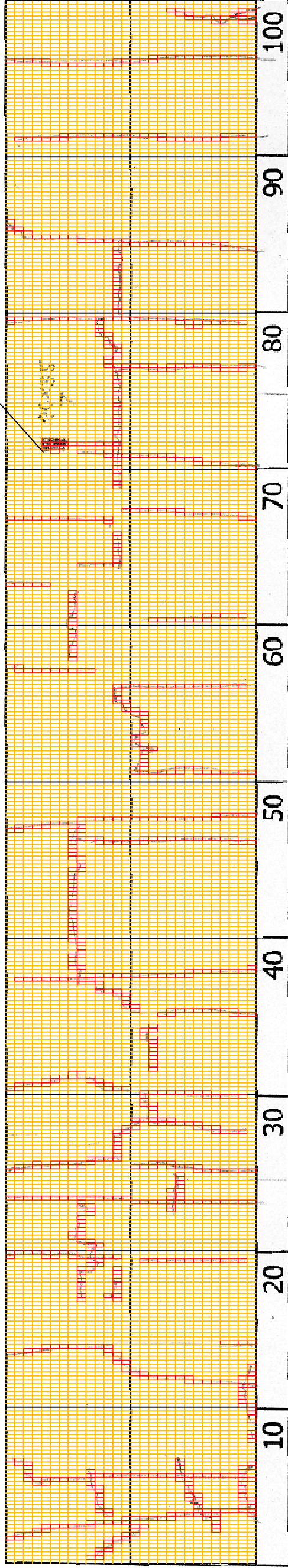
DSC00791



DSC00792

THE BASIC DESIGN STUDY ON CONSTRUCTION OF EASTERN ARTERIAL ROAD IN MONGOLIA	
JAPAN INTERNATIONAL COOPERATION AGENCY (JICA)	DEPARTMENT OF ROADS, MINISTRY OF INFRASTRUCTURE, THE GOVERNMENT OF MONGOLIA
PACIFIC CONSULTANTS INTERNATIONAL JAPAN OVERSEAS CONSULTANTS	
Drawing title	Scale
4800-4900	
No.	D-46

DSC00796



4+800

COMMENT	Volume of crackle: medium Width of crackle: 05-20mm 310 / 2800 * 100 = 11.07%	Volume of crackle: less Width of crackle: 05-20mm 278 / 2800 * 100 = 9.93%	Volume of crackle: medium Width of crackle: 05-10mm There is a pothole in + 4970 metre. (200*350*70mm) 211 / 2800 * 100 = 7.54%	Volume of crackle: less Width of crackle: 05-15mm 207 / 2800 * 100 = 7.39%
SUBJECTIVE EVALUATION	3	4	4	4
OBJECTIVE EVALUATION	b	b, d	b, d	b, d
TYPE OF PAVEMENT REHABILITATION	B	B	B	B



DSC00793



DSC00794



DSC00795



DSC00797

THE BASIC DESIGN STUDY ON CONSTRUCTION OF EASTERN ARTERIAL ROAD IN MONGOLIA

JAPAN INTERNATIONAL COOPERATION AGENCY (JICA)

MINISTRY OF INFRASTRUCTURE,  
THE GOVERNMENT OF MONGOLIA

PACIFIC CONSULTANTS INTERNATIONAL  
JAPAN OVERSEAS CONSULTANTS

Drawing title

4900-5000

No.

D-47

DEPARTMENT OF ROADS,  
MINISTRY OF INFRASTRUCTURE,  
THE GOVERNMENT OF MONGOLIA

JAPAN INTERNATIONAL COOPERATION AGENCY (JICA)

MINISTRY OF INFRASTRUCTURE,  
THE GOVERNMENT OF MONGOLIA

PACIFIC CONSULTANTS INTERNATIONAL  
JAPAN OVERSEAS CONSULTANTS

Drawing title

4900-5000

No.

D-47