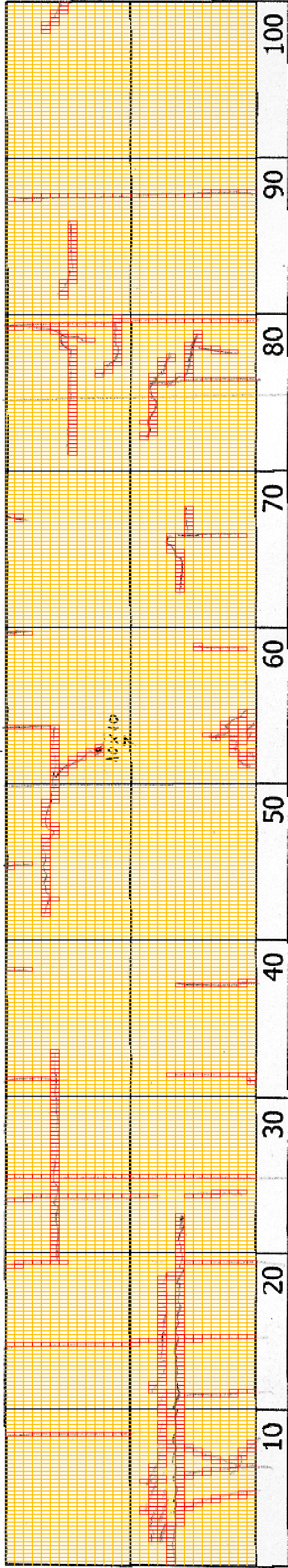


DSC00756

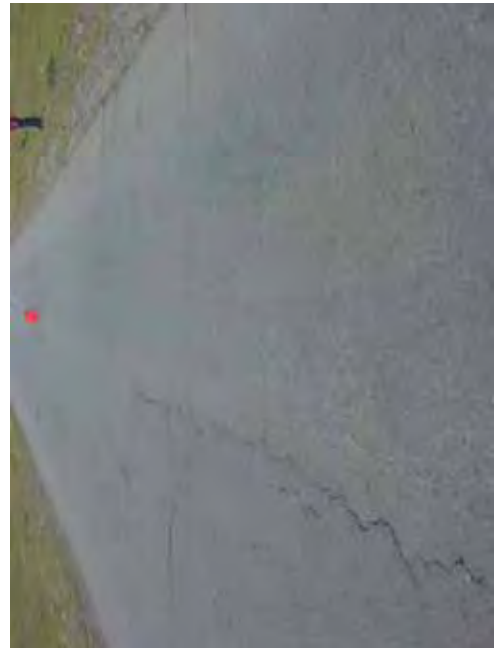


3+900

COMMENT	Volume of crackle: less Width of crackle: 05-10mm 373 / 2800 * 100 = 13.32%	Volume of crackle: less Width of crackle: 05-10mm 104 / 2800 * 100 = 3.71%	Volume of crackle: less Width of crackle: 10-30mm There is a pothole in + 4050 metre. (100*100*70mm) 145 / 2800 * 100 = 5.18%	Volume of crackle: less Width of crackle: 10-15mm 176 / 2800 * 100 = 6.29%
SUBJECTIVE EVALUATION	3	3	3	3
OBJECTIVE EVALUATION	b	b	b, c	b
TYPE OF PAVEMENT REHABILITATION	B	B	D	D



DSC00754



DSC00755



DSC00757



DSC00758

THE BASIC DESIGN STUDY ON CONSTRUCTION OF EASTERN ARTERIAL ROAD IN MONGOLIA

JAPAN INTERNATIONAL COOPERATION AGENCY (JICA)
MINISTRY OF INFRASTRUCTURE,
THE GOVERNMENT OF MONGOLIA

PACIFIC CONSULTANTS INTERNATIONAL
JAPAN OVERSEAS CONSULTANTS

Scale
4000-4100

No.
D-38



4+100

COMMENT	Volume of crackle: medium Width of crackle: 10-40mm 321 / 2800 * 100 = 11.46%	Volume of crackle: medium Width of crackle: 05-20mm 362 / 2800 * 100 = 12.93%	Volume of crackle: medium Width of crackle: 05-25mm 462 / 2800 * 100 = 16.50%	Volume of crackle: less Width of crackle: 10-60mm There is a pothole in + 4274 metre. (100*150*40mm) 283 / 2800 * 100 = 10.11%
SUBJECTIVE EVALUATION	5	5	5	5
OBJECTIVE EVALUATION	b, e	b, e	b, e	b, e
TYPE OF PAVEMENT REHABILITATION	D	D	D	D



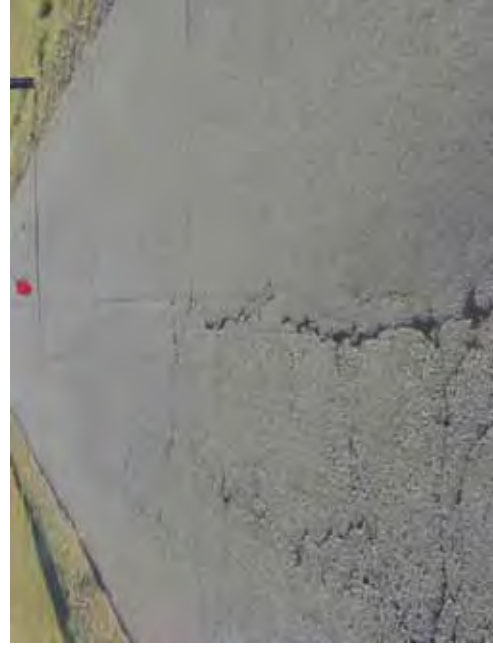
DSC00763



DSC00764



DSC00765



DSC00766

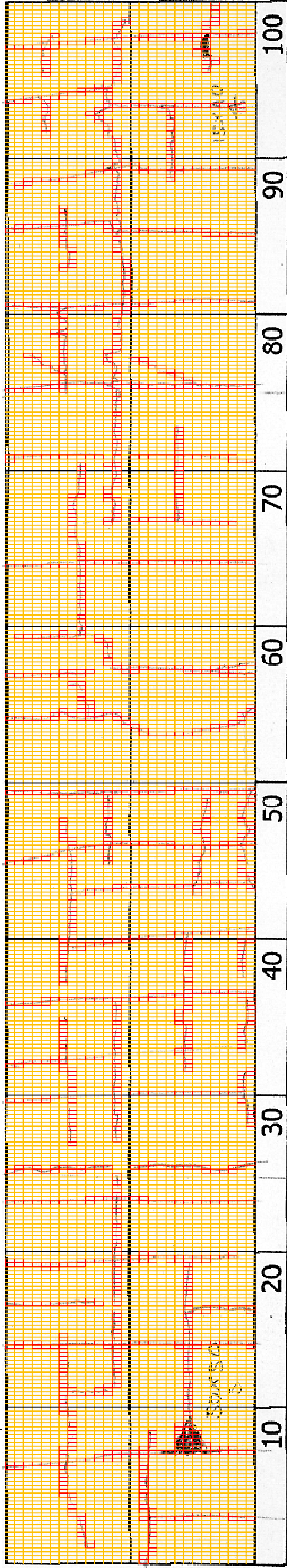
THE BASIC DESIGN STUDY ON CONSTRUCTION OF EASTERN ARTERIAL ROAD IN MONGOLIA

JAPAN INTERNATIONAL COOPERATION AGENCY (JICA)
MINISTRY OF INFRASTRUCTURE,
THE GOVERNMENT OF MONGOLIA

PACIFIC CONSULTANTS INTERNATIONAL
JAPAN OVERSEAS CONSULTANTS

Drawing title
4200-4300
Scale
No.
D-40

DSC00768



4+200

COMMENT	Volume of crackle: medium Width of crackle: 10-70mm There is a pothole in + 4305 metre. (500*500*50mm) 400 / 2800 * 100 = 14.29%	Volume of crackle: less Width of crackle: 05-15mm 480 / 2800 * 100 = 17.14%	Volume of crackle: less Width of crackle: 05-10mm 289 / 2800 * 100 = 10.32%	Volume of crackle: less Width of crackle: 05-30mm There is a pothole in + 4397 metre. (150*100*40mm) 433 / 2800 * 100 = 15.46%
SUBJECTIVE EVALUATION	4	4	4	4
OBJECTIVE EVALUATION	b, c, e	b, e	b, e	b, c, e
TYPE OF PAVEMENT REHABILITATION	D	D	D	D



DSC00767



DSC00769



DSC00770



DSC00771

THE BASIC DESIGN STUDY ON CONSTRUCTION OF EASTERN ARTERIAL ROAD IN MONGOLIA

JAPAN INTERNATIONAL COOPERATION AGENCY (JICA)
MINISTRY OF INFRASTRUCTURE,
THE GOVERNMENT OF MONGOLIA

PACIFIC CONSULTANTS INTERNATIONAL
JAPAN OVERSEAS CONSULTANTS

Drawing title
4300-4400

No.
D-41

Scale



4+300

COMMENT	Volume of crackle: less Width of crackle: 05-20mm 381 / 2800 * 100 = 13.61%	Volume of crackle: medium Width of crackle: 10-60mm 345 / 2800 * 100 = 12.32%	Volume of crackle: medium Width of crackle: 05-60mm 364 / 2800 * 100 = 13.14%	Volume of crackle: most Width of crackle: 05-70mm There is a pothole in + 4488 metre. (500*300*40mm) There is a pothole in + 4498 metre. (150*150*70mm) 350 / 2800 * 100 = 12.50%
SUBJECTIVE EVALUATION	4	4	4	4
OBJECTIVE EVALUATION	b, e	b, e	b, e	b, c, e
TYPE OF PAVEMENT REHABILITATION	D	D	D	D



DSC00772



DSC00773



DSC00774



DSC00775

THE BASIC DESIGN STUDY ON CONSTRUCTION OF EASTERN ARTERIAL ROAD IN MONGOLIA

JAPAN INTERNATIONAL COOPERATION AGENCY (JICA)

MINISTRY OF INFRASTRUCTURE,
THE GOVERNMENT OF MONGOLIA

PACIFIC CONSULTANTS INTERNATIONAL
JAPAN OVERSEAS CONSULTANTS

Drawing title

4400-4500

No.

D-42

Scale