

3+400

COMMENT	Volume of crackle: most Width of crackle: 10-50mm 452 / 2800 * 100 = 16.14%	Volume of crackle: most Width of crackle: 10-50mm 295 / 2800 * 100 = 10.54%	Volume of crackle: medium Width of crackle: 05-60mm 268 / 2800 * 100 = 9.57%	Volume of crackle: less Width of crackle: 10-40mm 201 / 2800 * 100 = 7.18%
SUBJECTIVE EVALUATION	3	3	3	3
OBJECTIVE EVALUATION	a, b	b	b	b
TYPE OF PAVEMENT REHABILITATION	B	B	B	B



DSC00729



DSC00730

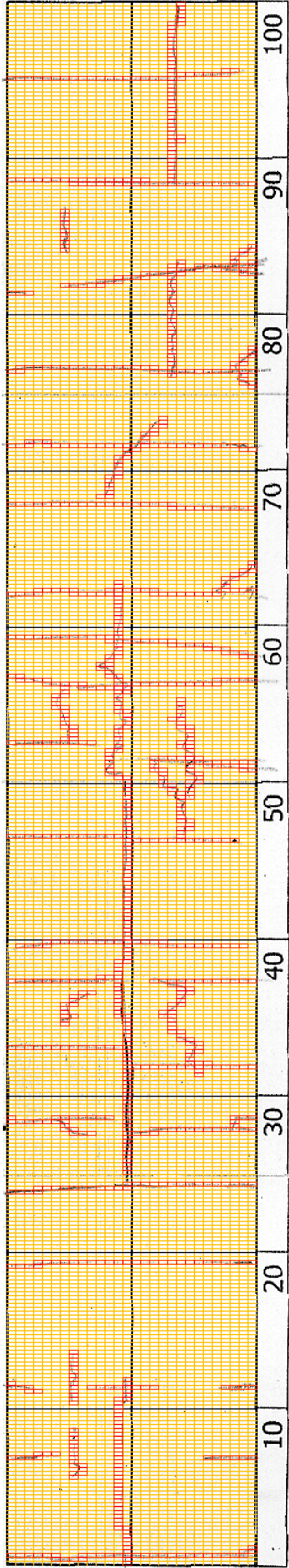


DSC00731



DSC00732

THE BASIC DESIGN STUDY ON CONSTRUCTION OF EASTERN ARTERIAL ROAD IN MONGOLIA	
JAPAN INTERNATIONAL COOPERATION AGENCY (JICA)	DEPARTMENT OF ROADS,
PACIFIC CONSULTANTS INTERNATIONAL	MINISTRY OF INFRASTRUCTURE,
JAPAN OVERSEAS CONSULTANTS	THE GOVERNMENT OF MONGOLIA
Scale	No.
3+00-3+500	D-32



3-800

COMMENT	Volume of crackle: less Width of crackle: 05-50mm 199 / 2800 * 100 = 7.11%	Volume of crackle: less Width of crackle: 10-40mm There are the most crackle in entrnal axis of the road. 317 / 2800 * 100 = 11.32%	Volume of crackle: medium Width of crackle: 10-20mm 336 / 2800 * 100 = 12.00%	Volume of crackle: less Width of crackle: 10-30mm 240 / 2800 * 100 = 8.57%
SUBJECTIVE EVALUATION	3	3	3	3
OBJECTIVE EVALUATION	b	b	b	b
TYPE OF PAVEMENT REHABILITATION	B	B	B	B



DSC00746



DSC00747



DSC00748



DSC00749

THE BASIC DESIGN STUDY ON CONSTRUCTION OF EASTERN ARTERIAL ROAD IN MONGOLIA

JAPAN INTERNATIONAL COOPERATION AGENCY (JICA)  
MINISTRY OF INFRASTRUCTURE,  
THE GOVERNMENT OF MONGOLIA

PACIFIC CONSULTANTS INTERNATIONAL  
JAPAN OVERSEAS CONSULTANTS

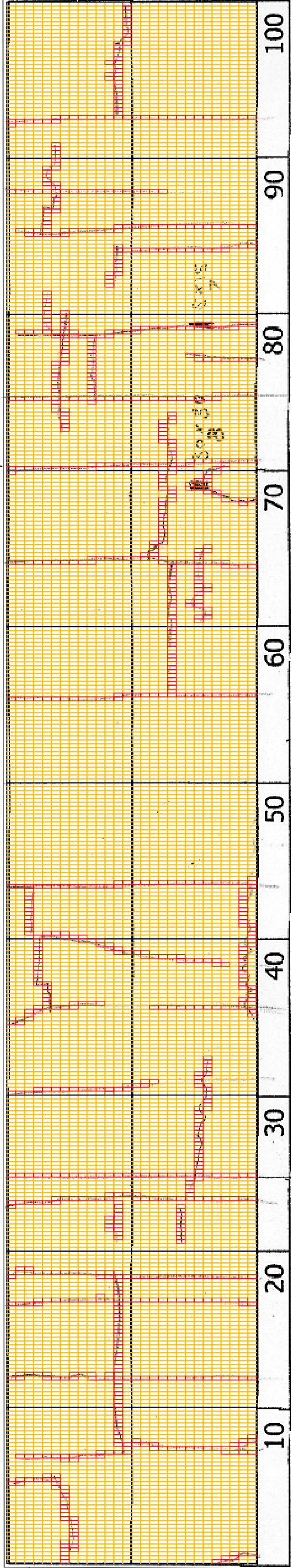
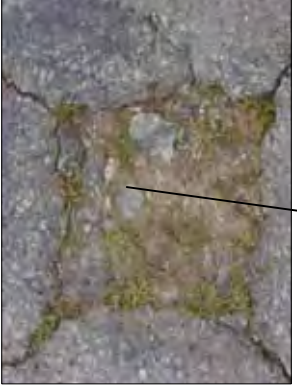
Scale

3800-3900

No.

D-36

DSC00736



3+500

COMMENT	Volume of crackle: medium Width of crackle: 10-50mm $285 / 2800 * 100 = 10.18\%$	Volume of crackle: less Width of crackle: 10-60mm $211 / 2800 * 100 = 7.54\%$	Volume of crackle: less Width of crackle: 10-30mm There is a pothole in + 3570 metre. (300*300*80mm) There are the most crackle in left side of the road. $254 / 2800 * 100 = 9.07\%$	Volume of crackle: less Width of crackle: 05-30mm There is a pothole in + 3579 metre. (50*150*70mm) $255 / 2800 * 100 = 9.11\%$
SUBJECTIVE EVALUATION	3	3	3	3
OBJECTIVE EVALUATION	b	b	b, c	b, c
TYPE OF PAVEMENT REHABILITATION	B	B	B	B



DSC00733



DSC00734



DSC00735



DSC00737

THE BASIC DESIGN STUDY ON CONSTRUCTION OF EASTERN ARTERIAL ROAD IN MONGOLIA

JAPAN INTERNATIONAL COOPERATION AGENCY (JICA)  
MINISTRY OF INFRASTRUCTURE,  
THE GOVERNMENT OF MONGOLIA

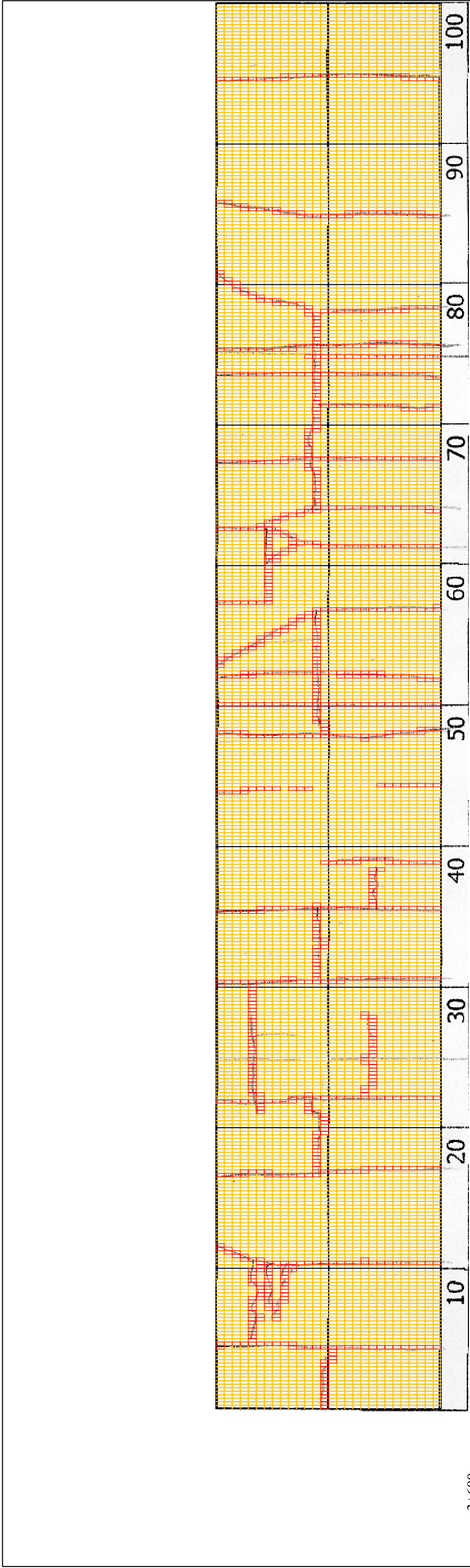
PACIFIC CONSULTANTS INTERNATIONAL  
JAPAN OVERSEAS CONSULTANTS

Scale

3500-3600

No.

D-33



3+600

COMMENT	Volume of crackle: less Width of crackle: 05-20mm 146 / 2800 * 100 = 5.21%	Volume of crackle: medium Width of crackle: 10-70mm 366 / 2800 * 100 = 13.07%	Volume of crackle: less Width of crackle: 05-15mm 210 / 2800 * 100 = 7.50%	Volume of crackle: less Width of crackle: 10-50mm 255 / 2800 * 100 = 9.11%
SUBJECTIVE EVALUATION	3	3	3	3
OBJECTIVE EVALUATION	b	b	b	b
TYPE OF PAVEMENT REHABILITATION	B	B	B	B



DSC00738



DSC00739

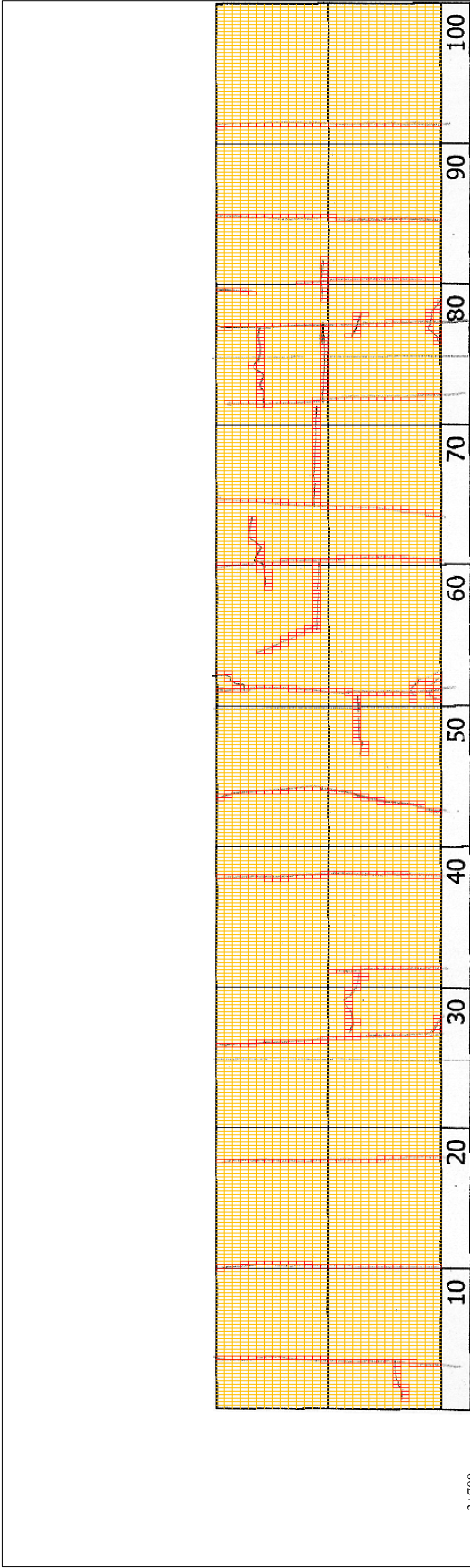


DSC00740

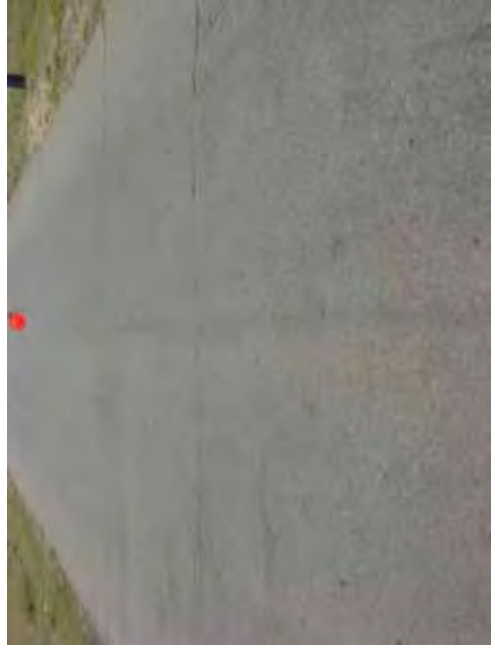


DSC00741

THE BASIC DESIGN STUDY ON CONSTRUCTION OF EASTERN ARTERIAL ROAD IN MONGOLIA	
JAPAN INTERNATIONAL COOPERATION AGENCY (JICA)	DEPARTMENT OF ROADS, MINISTRY OF INFRASTRUCTURE, THE GOVERNMENT OF MONGOLIA
PACIFIC CONSULTANTS INTERNATIONAL JAPAN OVERSEAS CONSULTANTS	
Drawing title	3600-3700
Scale	No.
	D-34



3+700	Volume of crackle: less Width of crackle: 10-60mm 102 / 2800 * 100 = 3.64%	Volume of crackle: less Width of crackle: 05-10mm 159 / 2800 * 100 = 5.68%	Volume of crackle: less Width of crackle: 05-30mm 264 / 2800 * 100 = 9.43%	Volume of crackle: less Width of crackle: 05-60mm 162 / 2800 * 100 = 5.79%
COMMENT				
SUBJECTIVE EVALUATION	3	3	3	3
OBJECTIVE EVALUATION	b	b	b	b
TYPE OF PAVEMENT REHABILITATION	B	B	B	B



DSC00642



DSC00743



DSC00744



DSC00611