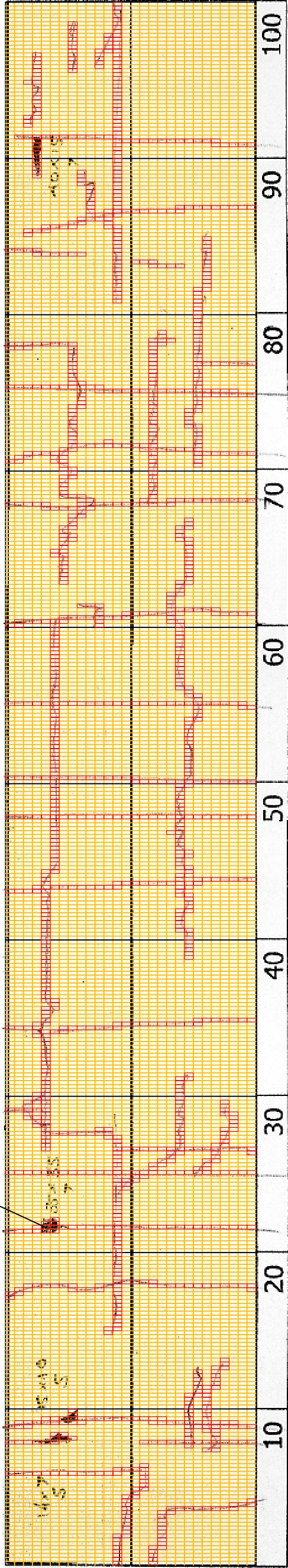


2+900	10	20	30	40	50	60	70	80	90	100
COMMENT	Volume of cracle: medium Width of cracle: 10-50mm There is a pothole in + 2980 metre. (600*450*80mm) There is a pothole in + 2980 metre. (500*600*200mm) 556 / 2800 * 19.86%									
SUBJECTIVE EVALUATION	3									
OBJECTIVE EVALUATION	b, c									
TYPE OF PAVEMENT REHABILITATION	B									



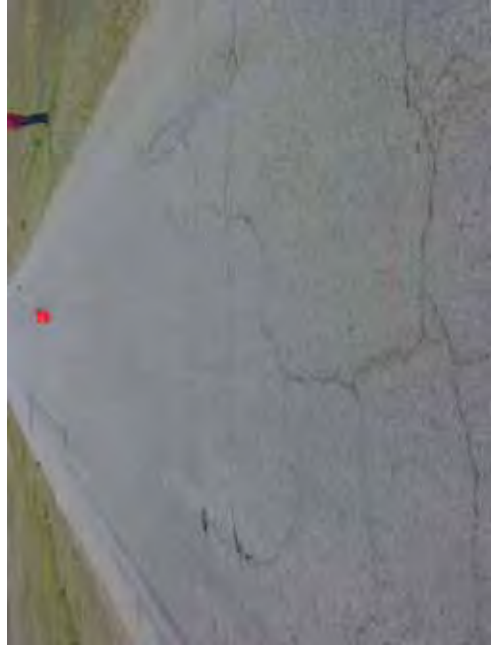
THE BASIC DESIGN STUDY ON CONSTRUCTION OF EASTERN ARTERIAL ROAD IN MONGOLIA	
JAPAN INTERNATIONAL COOPERATION AGENCY (JICA)	DEPARTMENT OF ROADS, MINISTRY OF INFRASTRUCTURE, THE GOVERNMENT OF MONGOLIA
PACIFIC CONSULTANTS INTERNATIONAL JAPAN OVERSEAS CONSULTANTS	
Drawing title	Scale
2900-3000	No. D-27

DSC00714



3+000

COMMENT	Volume of crackle: medium Width of crackle: 05-20mm There is a pothole in + 3090 metre. (400*150*70mm)	Volume of crackle: medium Width of crackle: 05-60mm	Volume of crackle: medium Width of crackle: 10-25mm	Volume of crackle: medium Width of crackle: (140*70*50mm) There is a pothole in + 3007 metre. (150*100*50mm) There is a pothole in + 3023 metre. (350*350*70mm)	Volume of crackle: medium Width of crackle: 10-25mm There is a pothole in + 3007 metre. (140*70*50mm) There is a pothole in + 3008 metre. (150*100*50mm) There is a pothole in + 3023 metre. (350*350*70mm)	Volume of crackle: medium Width of crackle: 10-25mm There is a pothole in + 3007 metre. (140*70*50mm) There is a pothole in + 3008 metre. (150*100*50mm) There is a pothole in + 3023 metre. (350*350*70mm)
SUBJECTIVE EVALUATION	335 / 2800 * 100 = 11.96%	388 / 2800 * 100 = 13.86%	366 / 2800 * 100 = 13.07%	300 / 2800 * 100 = 10.71%	300 / 2800 * 100 = 10.71%	300 / 2800 * 100 = 10.71%
OBJECTIVE EVALUATION	3	3	3	4	3	3
TYPE OF PAVEMENT REHABILITATION	c, e	b, e	b, e	b, c	b, e	b, c
	B	B	B	B	B	B



DSC00713



DSC00715

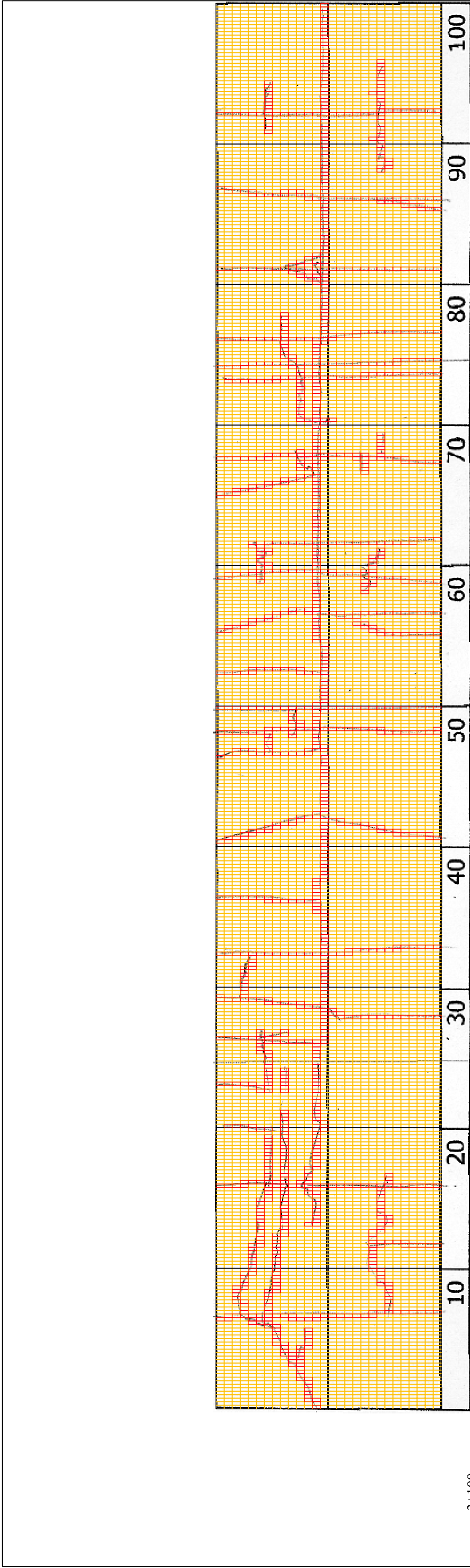


DSC00716



DSC00717

THE BASIC DESIGN STUDY ON CONSTRUCTION OF EASTERN ARTERIAL ROAD IN MONGOLIA	
JAPAN INTERNATIONAL COOPERATION AGENCY (JICA)	DEPARTMENT OF ROADS, MINISTRY OF INFRASTRUCTURE, THE GOVERNMENT OF MONGOLIA
PACIFIC CONSULTANTS INTERNATIONAL JAPAN OVERSEAS CONSULTANTS	
Drawing title	Scale
3000-3100	No. D-28

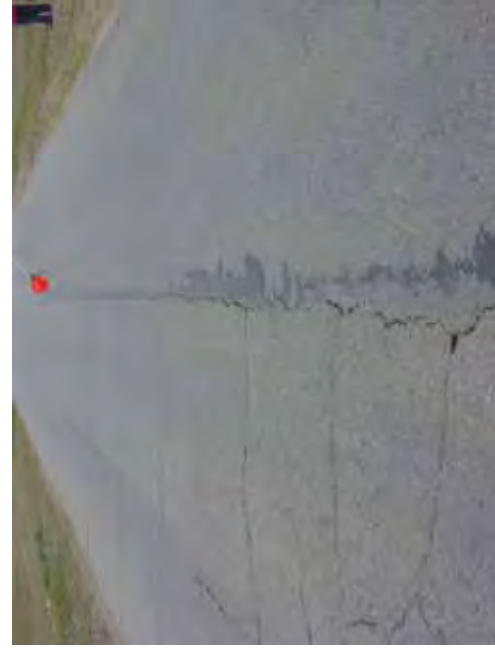


3+100

COMMENT	Volume of crackle: medium Width of crackle: 05-20mm 361 / 2800 * 12.89%	Volume of crackle: less Width of crackle: 05-35mm 344 / 2800 * 12.29%	Volume of crackle: medium Width of crackle: 05-15mm 403 / 2800 * 14.39%	Volume of crackle: less Width of crackle: 05-20mm 304 / 2800 * 10.86%
SUBJECTIVE EVALUATION	3	3	3	3
OBJECTIVE EVALUATION	b	b	b	b
TYPE OF PAVEMENT REHABILITATION	B	B	B	B



DSC00718



DSC00719



DSC00720



DSC00721

THE BASIC DESIGN STUDY ON CONSTRUCTION OF EASTERN ARTERIAL ROAD IN MONGOLIA

JAPAN INTERNATIONAL COOPERATION AGENCY (JICA)

DEPARTMENT OF ROADS,  
MINISTRY OF INFRASTRUCTURE,  
THE GOVERNMENT OF MONGOLIA

PACIFIC CONSULTANTS INTERNATIONAL  
JAPAN OVERSEAS CONSULTANTS

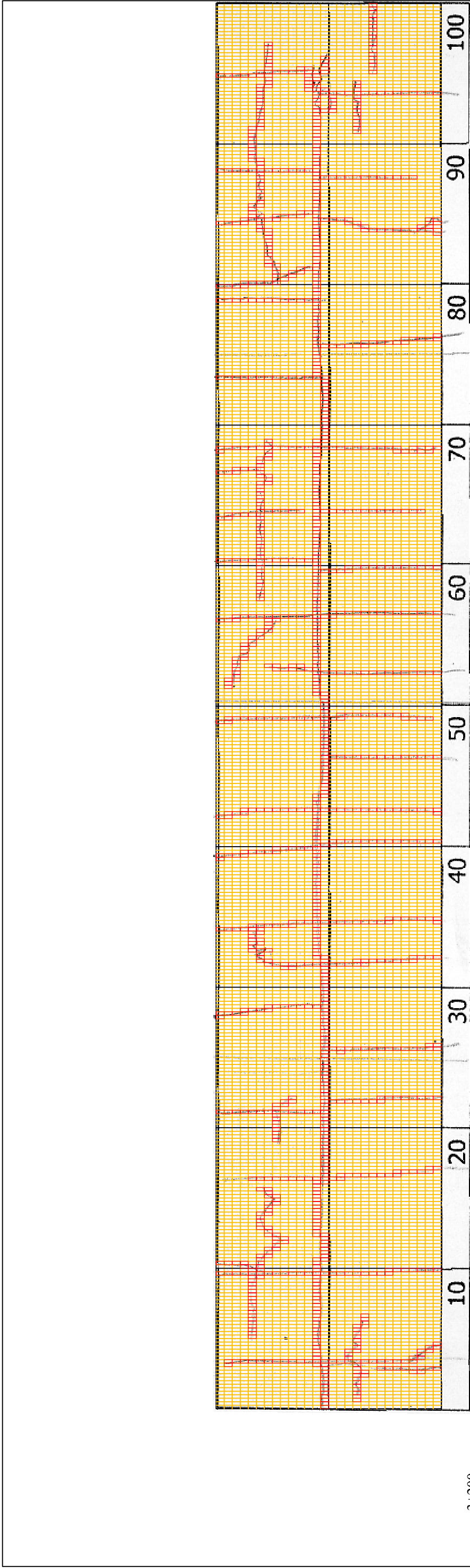
Drawing title

3100-3200

Scale

No.

D-29



3+200

COMMENT	Volume of crackle: less Width of crackle: 05-25mm 330 / 2800 * 100 = 11.79%	Volume of crackle: less Width of crackle: 10-20mm 312 / 2800 * 11.14%	Volume of crackle: medium Width of crackle: 05-30mm 331 / 2800 * 11.81%	Volume of crackle: medium Width of crackle: 10-40mm 344 / 2800 * 12.29%
SUBJECTIVE EVALUATION	3	3	3	3
OBJECTIVE EVALUATION	b	b	b	b
TYPE OF PAVEMENT REHABILITATION	B	B	B	B



DSC00722



DSC00723



DSC00724



DSC00725

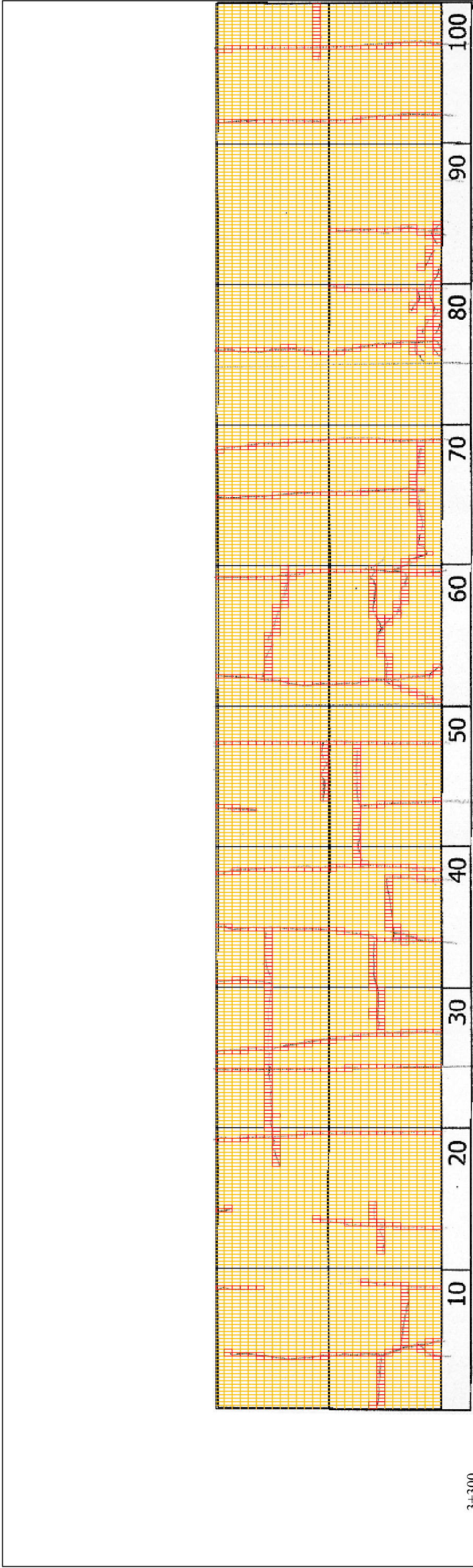
THE BASIC DESIGN STUDY ON CONSTRUCTION OF EASTERN ARTERIAL ROAD IN MONGOLIA

JAPAN INTERNATIONAL COOPERATION AGENCY (JICA)  
MINISTRY OF INFRASTRUCTURE,  
THE GOVERNMENT OF MONGOLIA

PACIFIC CONSULTANTS INTERNATIONAL  
JAPAN OVERSEAS CONSULTANTS

Scale  
3200-3300

No.  
D-30



3+300	Volume of crackle: less Width of crackle: 05-20mm 216 / 2800 * 100 = 7.71%	Volume of crackle: medium Width of crackle: 10-25mm 297 / 2800 * 100 = 10.61%	Volume of crackle: medium Width of crackle: 10-50mm 263 / 2800 * 100 = 9.39%	Volume of crackle: less Width of crackle: 10-35mm 201 / 2800 * 100 = 7.18%
COMMENT				
SUBJECTIVE EVALUATION	3	3	3	3
OBJECTIVE EVALUATION	b	b	b	b
TYPE OF PAVEMENT REHABILITATION	B	B	B	B



DSC00726

DSC00727

DSC00728

THE BASIC DESIGN STUDY ON CONSTRUCTION OF EASTERN ARTERIAL ROAD IN MONGOLIA	
JAPAN INTERNATIONAL COOPERATION AGENCY (JICA)	DEPARTMENT OF ROADS, MINISTRY OF INFRASTRUCTURE, THE GOVERNMENT OF MONGOLIA
PACIFIC CONSULTANTS INTERNATIONAL JAPAN OVERSEAS CONSULTANTS	
Drawing title	Scale
3300-3400	No. D-31