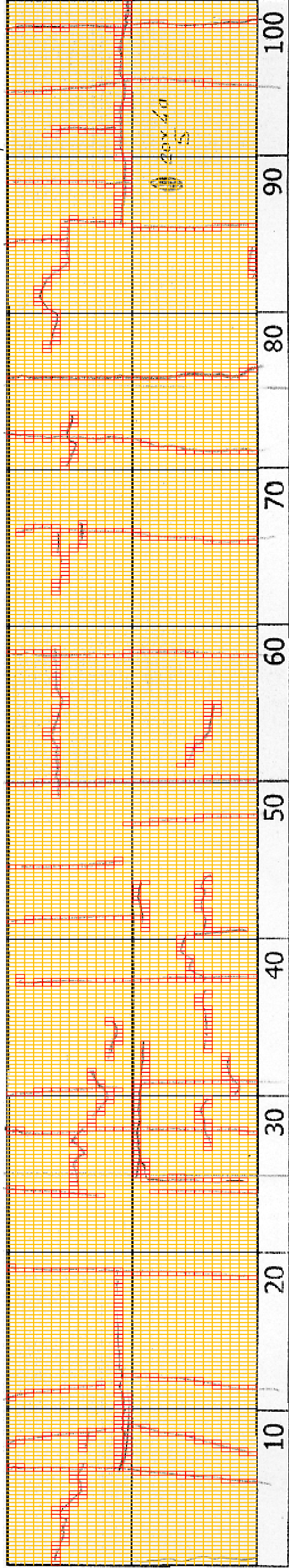
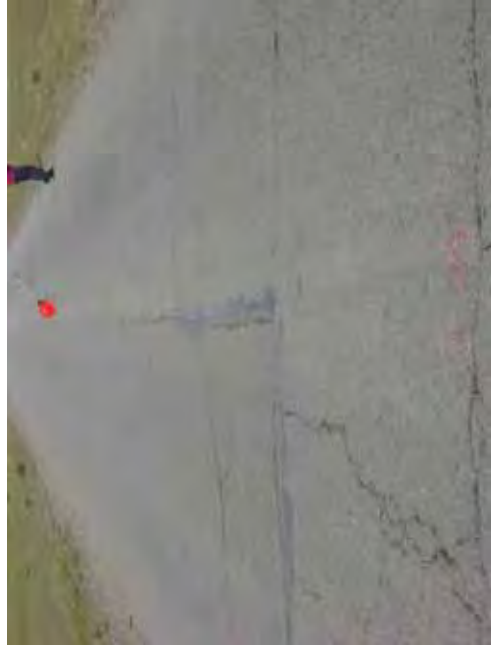


DSC00692



2+400

COMMENT	Volume of crackle: less Width of crackle: 05-15mm 291 / 2800 * 100 = 10.39%	Volume of crackle: medium Width of crackle: 10-30mm 342 / 2800 * 100 = 12.21%	Volume of crackle: less Width of crackle: 05-40mm 233 / 2800 * 100 = 8.32%	Volume of crackle: less Width of crackle: 05-25mm There is a pothole in + 2489 metre. (200*400*50mm) 280 / 2800 * 100 = 10.00%
SUBJECTIVE EVALUATION	3	3	3	3
OBJECTIVE EVALUATION	b	b	b	b, c
TYPE OF PAVEMENT REHABILITATION	B	B	B	B



DSC00688



DSC00689



DSC00690



DSC00691

THE BASIC DESIGN STUDY ON CONSTRUCTION OF EASTERN ARTERIAL ROAD IN MONGOLIA

JAPAN INTERNATIONAL COOPERATION AGENCY (JICA)  
MINISTRY OF INFRASTRUCTURE,  
THE GOVERNMENT OF MONGOLIA

PACIFIC CONSULTANTS INTERNATIONAL  
JAPAN OVERSEAS CONSULTANTS

Drawing title: 2400-2500  
Scale: No. D-22



2+500	Volume of crackle: medium Width of crackle: 05-10mm 446 / 2800 * 100 = 15.93%	Volume of crackle: medium Width of crackle: 05-30mm 343 / 2800 * 100 = 12.25%	Volume of crackle: medium Width of crackle: 05-50mm 334 / 2800 * 100 = 11.93%	Volume of crackle: most Width of crackle: 05-30mm 411 / 2800 * 100 = 14.68%
COMMENT				
SUBJECTIVE EVALUATION	3	3	3	3
OBJECTIVE EVALUATION	b	b	b	b
TYPE OF PAVEMENT REHABILITATION	B	B	B	B



DSC00693

DSC00694

DSC00695

DSC00696

THE BASIC DESIGN STUDY ON CONSTRUCTION OF EASTERN ARTERIAL ROAD IN MONGOLIA

JAPAN INTERNATIONAL COOPERATION AGENCY (JICA)		DEPARTMENT OF ROADS,	
PACIFIC CONSULTANTS INTERNATIONAL		MINISTRY OF INFRASTRUCTURE,	
JAPAN OVERSEAS CONSULTANTS		THE GOVERNMENT OF MONGOLIA	
Drawing title		Scale	
2500-2600		No.	
		D-23	



2+600

COMMENT	Volume of crackle: most Width of crackle: 10-60mm There is a pothole in + 2613 metre. (100*200*70mm) 314 / 2800 * 100 = 11.21%	Volume of crackle: most Width of crackle: 10-40mm 298 / 2800 * 100 = 10.64%	Volume of crackle: medium Width of crackle: 10-70mm 363 / 2800 * 12.96%	Volume of crackle: most Width of crackle: 05-30mm 403 / 2800 * 14.39%
SUBJECTIVE EVALUATION	3	3	3	3
OBJECTIVE EVALUATION	b, c	b	b	b
TYPE OF PAVEMENT REHABILITATION	B	B	B	B



DSC00697



DSC00698

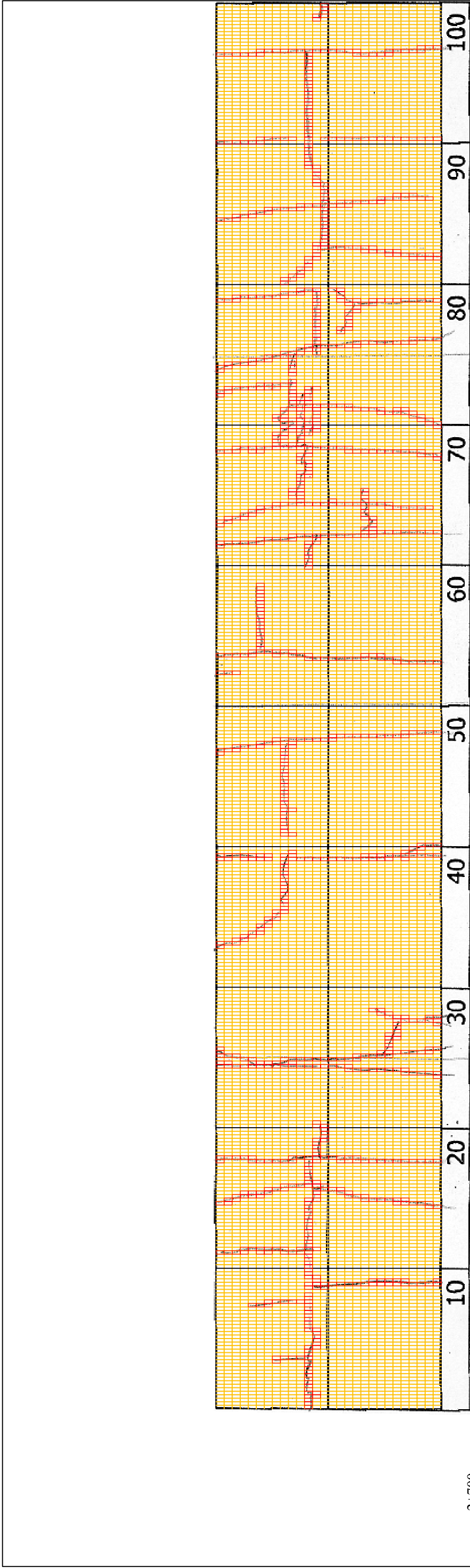


DSC00699



DSC00700

THE BASIC DESIGN STUDY ON CONSTRUCTION OF EASTERN ARTERIAL ROAD IN MONGOLIA	
JAPAN INTERNATIONAL COOPERATION AGENCY (JICA)	DEPARTMENT OF ROADS, MINISTRY OF INFRASTRUCTURE, THE GOVERNMENT OF MONGOLIA
PACIFIC CONSULTANTS INTERNATIONAL JAPAN OVERSEAS CONSULTANTS	
Drawing title	2600-2700
Scale	No.
	D-24



2+700

COMMENT	Volume of crackle: most Width of crackle: 05-55mm 270 / 2800 * 100 = 9.64%	Volume of crackle: medium Width of crackle: 05-20mm 190 / 2800 * 100 = 6.79%	Volume of crackle: medium Width of crackle: 05-40mm 321 / 2800 * 100 = 11.46%	Volume of crackle: most Width of crackle: 05-45mm 283 / 2800 * 100 = 10.11%
SUBJECTIVE EVALUATION	3	3	3	3
OBJECTIVE EVALUATION	b	b	b	b
TYPE OF PAVEMENT REHABILITATION	B	B	B	B



DSC00701



DSC00702



DSC00703



DSC00704

THE BASIC DESIGN STUDY ON CONSTRUCTION OF EASTERN ARTERIAL ROAD IN MONGOLIA

JAPAN INTERNATIONAL COOPERATION AGENCY (JICA)

DEPARTMENT OF ROADS,  
MINISTRY OF INFRASTRUCTURE,  
THE GOVERNMENT OF MONGOLIA

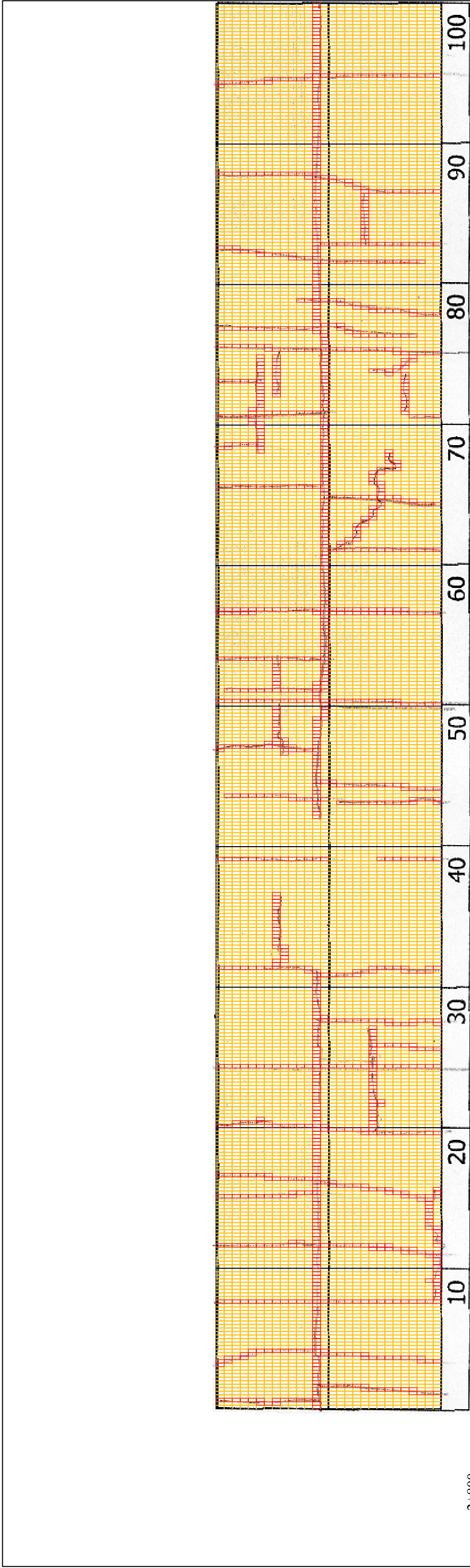
PACIFIC CONSULTANTS INTERNATIONAL  
JAPAN OVERSEAS CONSULTANTS

Drawing title

2700-2800

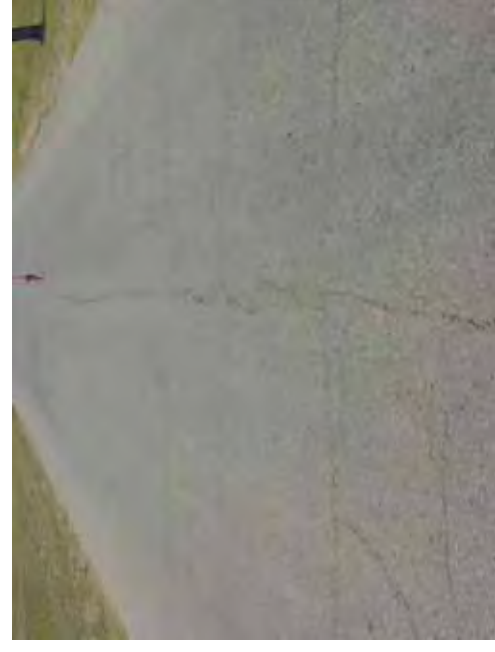
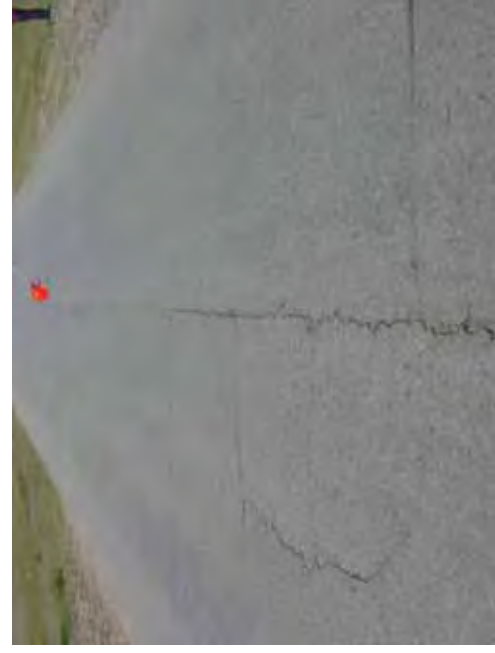
No.

D-25



2-800

COMMENT	Volume of crackle: medium Width of crackle: 05-35mm 385 / 2800 * 100 = 13.75%	Volume of crackle: less Width of crackle: 03-20mm 378 / 2800 = * 100 = 13.50%	Volume of crackle: less Width of crackle: 10-15mm 297 / 2800 * 100 = 9.96%
SUBJECTIVE EVALUATION	3	3	3
OBJECTIVE EVALUATION	b	b	b
TYPE OF PAVEMENT REHABILITATION	B	B	B



DSC00705

DSC00706

DSC00707

DSC00708

THE BASIC DESIGN STUDY ON CONSTRUCTION OF EASTERN ARTERIAL ROAD IN MONGOLIA

JAPAN INTERNATIONAL COOPERATION AGENCY (JICA)

DEPARTMENT OF ROADS,  
MINISTRY OF INFRASTRUCTURE,  
THE GOVERNMENT OF MONGOLIA

PACIFIC CONSULTANTS INTERNATIONAL  
JAPAN OVERSEAS CONSULTANTS

Drawing title

2800-2900

Scale

No.

D-26