

STATION	FINISHED GRADE	ORIGINAL GROUND	HORIZONTAL CURVATURE	VERTICAL CURVATURE	SUPERELEVATION
323+000	1086.467	1086.161			
	1086.727	1086.729			
	1087.293	1086.947			
	1087.816	1087.121			
	1087.987	1087.249			
	1088.030	1087.334			
	1088.443	1087.374			
	1088.856	1087.370			
	1089.109	1087.321			
	1088.401	1087.227			
	1087.692	1087.090			
	1087.266	1086.907			
	1086.840	1086.681			
	1086.705	1086.410			
	1086.490	1086.094			
	1086.412	1085.734			
	1086.157	1085.330			
	1085.902	1084.881			
	1085.647	1084.387			
	1085.392	1083.850			
	1085.137	1083.328			
	1084.871	1082.882			
	1084.664	1082.512			
	1084.583	1082.218			
	1083.147	1082.000			
	1081.301	1081.858			
	1080.334	1081.792			
	1079.819	1081.802			
	1079.652	1081.887			
	1079.793	1082.049			
	1080.485	1082.248			
	1081.238	1082.415			
	1081.992	1082.537			
	1082.745	1082.615			
	1083.119	1082.648			
	1083.266	1082.637			

STRAIGHT  
LVC = 200.00 m  
9 = 1.000%

LVC = 450.00 m

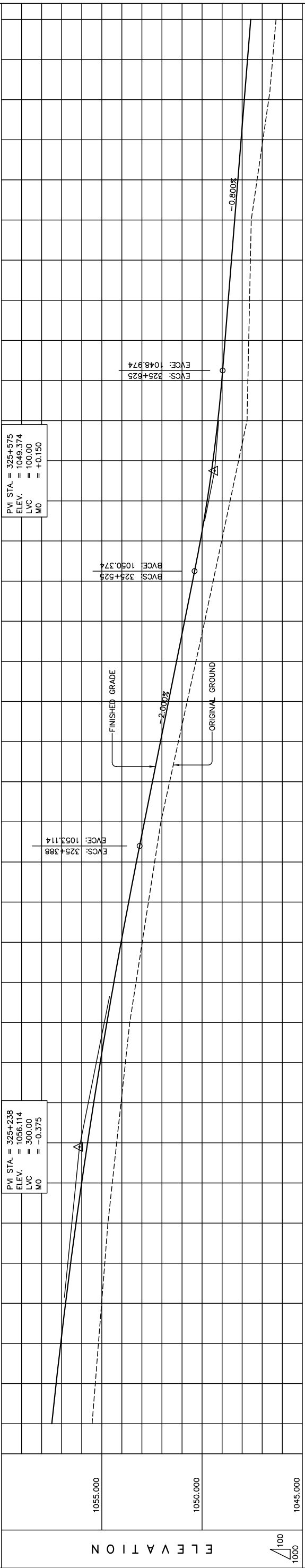
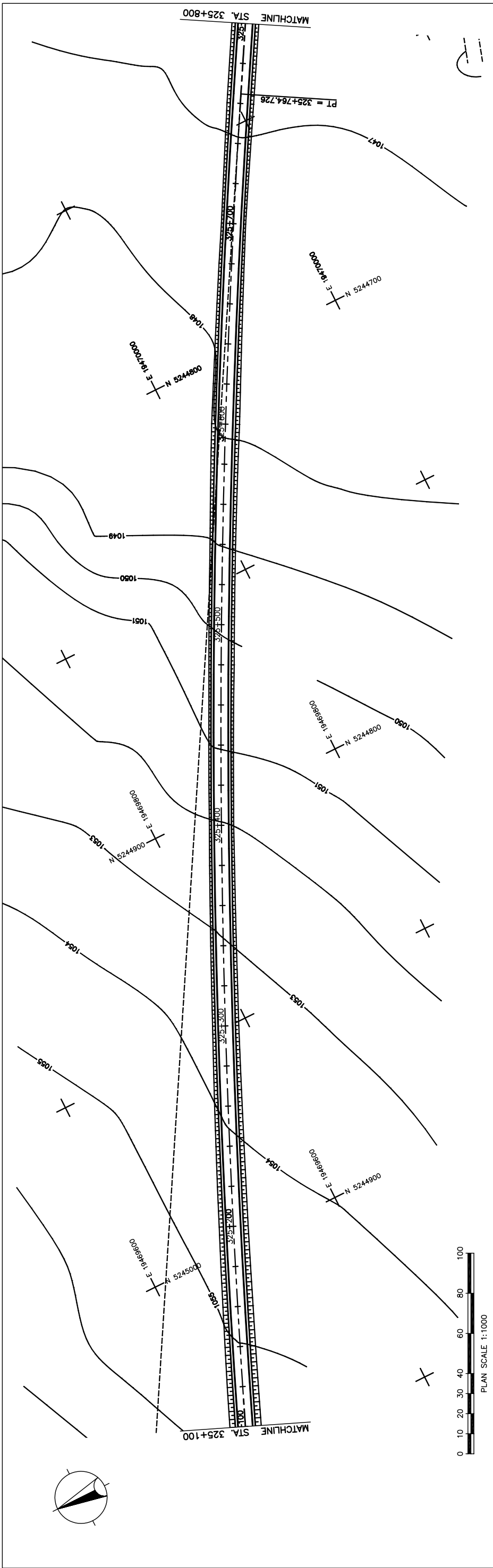
N.C.

THE BASIC DESIGN STUDY ON CONSTRUCTION OF EASTERN ARTERIAL ROAD IN MONGOLIA	
JAPAN INTERNATIONAL COOPERATION AGENCY (JICA)	DEPARTMENT OF ROADS, MINISTRY OF INFRASTRUCTURE, THE GOVERNMENT OF MONGOLIA
PACIFIC CONSULTANTS INTERNATIONAL JAPAN OVERSEAS CONSULTANTS	
Drawing title	Scale
PLAN AND PROFILE STA. 323+000 - STA. 323+700 (SECTION-6)	AS SHOWN
Sheet No.	Sheet No.
C-32	32/41

**Figure 2-2-3-82 Plan and Profile (Section VI Sta.323+000-Sta.323+700)**







STATION	FINISHED GRADE	ORIGINAL GROUND	HORIZONTAL CURVATURE	VERTICAL CURVATURE	SUPERELEVATION
325+100	1057.491	1057.276			
325+110	1057.276	1057.048			
325+120	1057.048	1056.807			
325+130	1056.807	1056.552			
325+140	1056.552	1056.284			
325+150	1056.284	1056.003			
325+160	1056.003	1055.708			
325+170	1055.708	1055.400			
325+180	1055.400	1055.079			
325+190	1055.079	1054.744			
325+200	1054.744	1054.396			
325+210	1054.396	1054.035			
325+220	1054.035	1053.660			
325+230	1053.660	1053.272			
325+240	1053.272	1052.874			
325+250	1052.874	1052.474			
325+260	1052.474	1052.074			
325+270	1052.074	1051.674			
325+280	1051.674	1051.274			
325+290	1051.274	1050.874			
325+300	1050.874	1050.474			
325+310	1050.474	1050.087			
325+320	1049.087	1049.211			
325+330	1048.674	1048.455			
325+340	1048.274	1048.214			
325+350	1047.874	1048.374			
325+360	1047.474	1048.534			
325+370	1047.074	1048.694			
325+380	1046.674	1048.854			
325+390	1046.274	1048.994			
325+400	1045.874	1049.126			

THE BASIC DESIGN STUDY ON CONSTRUCTION OF EASTERN ARTERIAL ROAD IN MONGOLIA

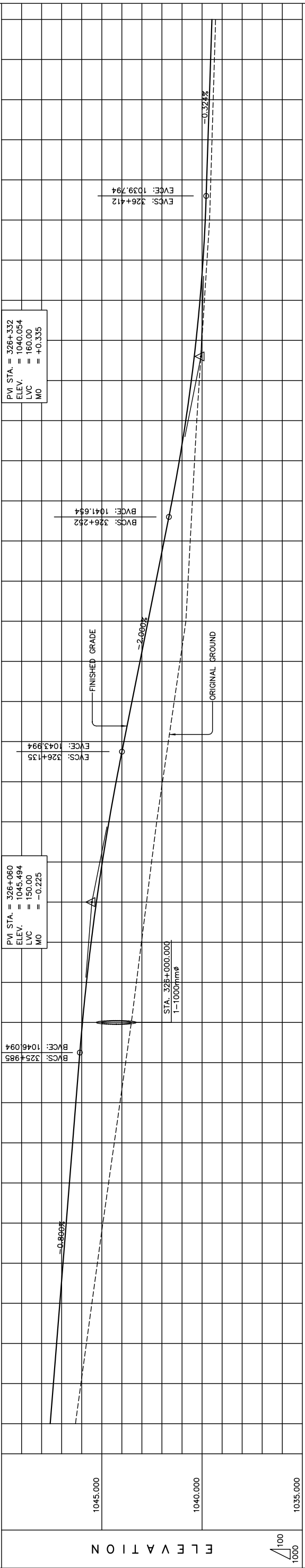
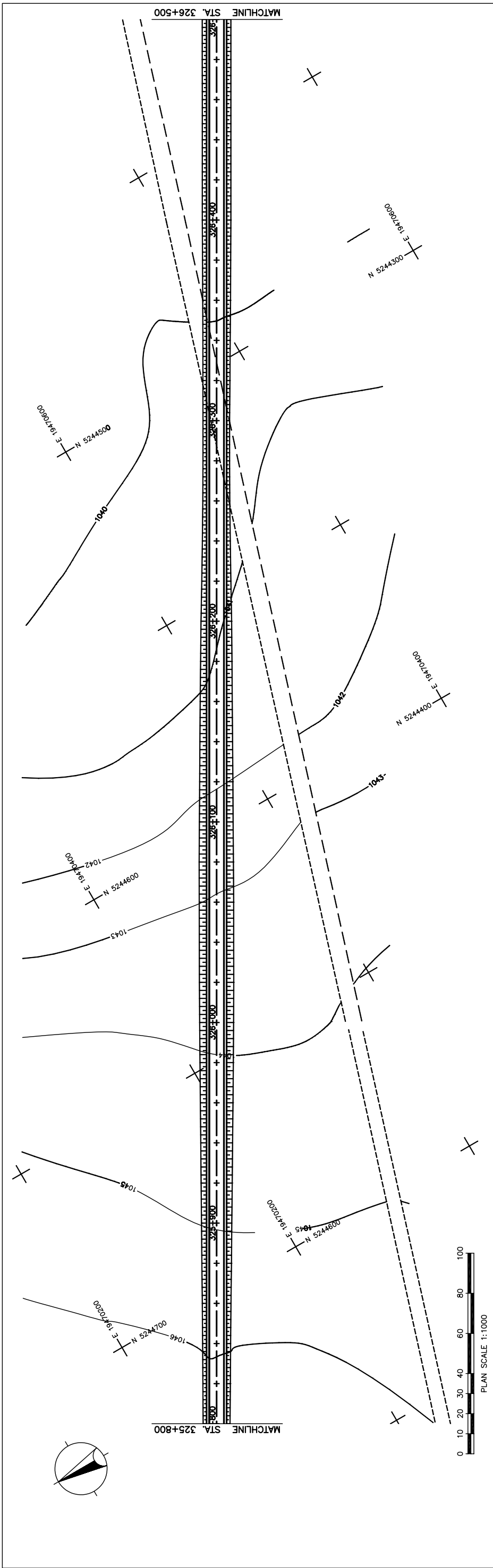
JAPAN INTERNATIONAL COOPERATION AGENCY (JICA)  
 DEPARTMENT OF ROADS,  
 MINISTRY OF INFRASTRUCTURE,  
 THE GOVERNMENT OF MONGOLIA

PACIFIC CONSULTANTS INTERNATIONAL  
 JAPAN OVERSEAS CONSULTANTS

Scale: AS SHOWN

PLAN AND PROFILE  
 STA. 325+100 - STA. 325+800  
 (SECTION-6)

Sheet No. C-35  
 35/41



STATION	FINISHED GRADE	ORIGINAL GROUND	HORIZONTAL CURVATURE	VERTICAL CURVATURE	SUPERELEVATION
325+800	1046.313	1047.574			
	1046.039	1047.414			
	1045.766	1047.254			
	1045.492	1047.094			
	1045.219	1046.934			
	1044.945	1046.774			
	1044.661	1046.614			
	1044.377	1046.454			
	1044.094	1046.294			
	1043.810	1046.134			
	1043.526	1045.965			
326+000	1043.274	1045.765			
	1043.021	1045.533			
	1042.769	1045.269			
	1042.516	1044.973			
	1042.264	1044.645			
	1041.972	1044.285			
	1041.681	1043.894			
	1041.389	1043.494			
	1041.098	1043.094			
	1040.806	1042.694			
	1040.698	1042.294			
	1040.590	1041.894			
	1040.481	1041.497			
	1040.373	1041.135			
	1040.265	1040.814			
	1040.137	1040.536			
	1040.009	1040.299			
	1039.881	1040.104			
	1039.753	1039.952			
	1039.625	1039.841			
	1039.565	1039.768			
	1039.505	1039.704			
	1039.444	1039.639			
	1039.384	1039.574			
326+500	1039.324	1039.509			

STRAIGHT

LVC = 150.00 m      g = -0.800%

LVC = 160.00 m      g = -0.324%

---

N.C.

THE BASIC DESIGN STUDY ON CONSTRUCTION OF EASTERN ARTERIAL ROAD IN MONGOLIA

JAPAN INTERNATIONAL COOPERATION AGENCY (JICA)

PACIFIC CONSULTANTS INTERNATIONAL  
JAPAN OVERSEAS CONSULTANTS

Drawing title

DEPARTMENT OF ROADS,  
MINISTRY OF INFRASTRUCTURE,  
THE GOVERNMENT OF MONGOLIA

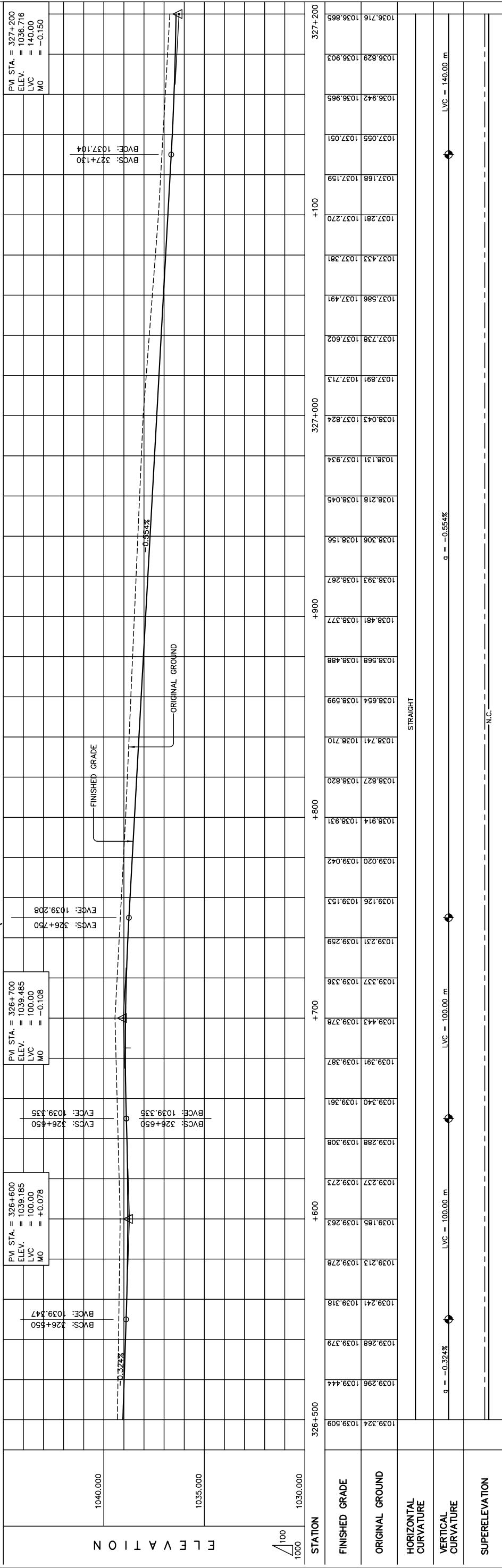
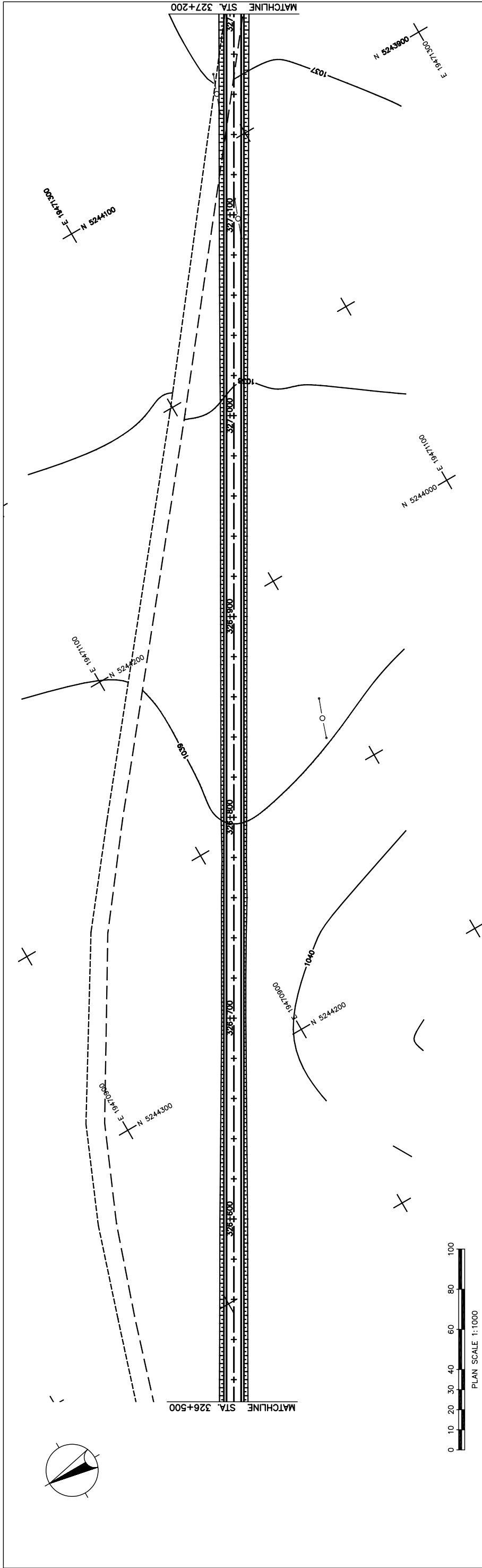
AS SHOWN

PLAN AND PROFILE  
STA. 325+800 - STA. 326+500  
(SECTION-6)

Scale

Sheet No.  
C-36  
36/41

Figure 2-2-3-86 Plan and Profile (Section VI Sta.325+800-Sta.326+500)



THE BASIC DESIGN STUDY ON CONSTRUCTION OF EASTERN ARTERIAL ROAD IN MONGOLIA

JAPAN INTERNATIONAL COOPERATION AGENCY (JICA)

DEPARTMENT OF ROADS,  
MINISTRY OF INFRASTRUCTURE,  
THE GOVERNMENT OF MONGOLIA

PACIFIC CONSULTANTS INTERNATIONAL  
JAPAN OVERSEAS CONSULTANTS

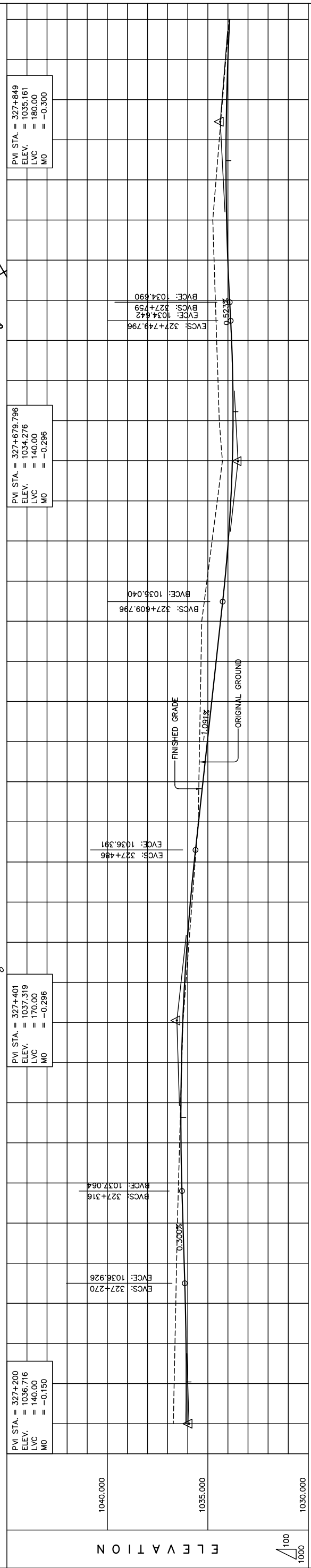
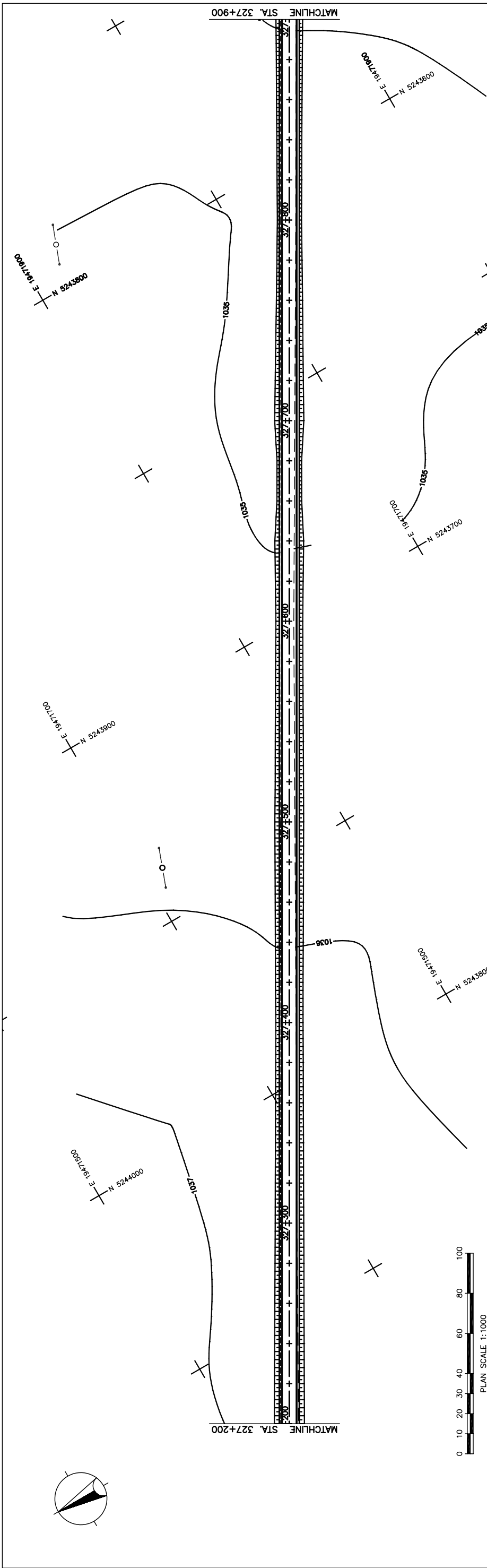
Scale

AS SHOWN

PLAN AND PROFILE  
STA. 326+500 - STA. 327+200  
(SECTION-6)

Sheet No.  
C-37  
37/41

Figure 2-2-3-87 Plan and Profile (Section VI Sta.326+500-Sta.327+200)



STATION	FINISHED GRADE	ORIGINAL GROUND	HORIZONTAL CURVATURE	VERTICAL CURVATURE	SUPERELEVATION
1036.716	1036.865	1036.716			
1036.675	1036.852	1036.675			
1036.635	1036.863	1036.635			
1036.594	1036.899	1036.594			
1036.554	1036.956	1036.554			
1036.513	1037.016	1036.513			
1036.459	1037.075	1036.459			
1036.405	1037.112	1036.405			
1036.350	1037.117	1036.350			
1036.296	1037.088	1036.296			
1036.242	1037.027	1036.242			
1036.090	1036.933	1036.090			
1035.937	1036.807	1035.937			
1035.785	1036.647	1035.785			
1035.632	1036.455	1035.632			
1035.480	1036.238	1035.480			
1035.445	1036.020	1035.445			
1035.409	1035.802	1035.409			
1035.374	1035.584	1035.374			
1035.338	1035.365	1035.338			
1035.303	1035.147	1035.303			
1035.046	1034.935	1035.046			
1034.788	1034.763	1034.788			
1034.531	1034.637	1034.531			
1034.278	1034.558	1034.278			
1034.431	1034.525	1034.431			
1034.496	1034.538	1034.496			
1034.560	1034.597	1034.560			
1034.625	1034.696	1034.625			
1034.689	1034.784	1034.689			
1034.754	1034.843	1034.754			
1034.592	1034.872	1034.592			
1034.430	1034.871	1034.430			
1034.269	1034.841	1034.269			
1034.107	1034.781	1034.107			
1033.945	1034.691	1033.945			

STRAIGHT  
 $g = -1.091\%$   
 LVC = 170.00 m  
 $g = 0.300\%$   
 LVC = 180.00 m

Scale: N.C.

THE BASIC DESIGN STUDY ON CONSTRUCTION OF EASTERN ARTERIAL ROAD IN MONGOLIA

JAPAN INTERNATIONAL COOPERATION AGENCY (JICA)  
 DEPARTMENT OF ROADS,  
 MINISTRY OF INFRASTRUCTURE,  
 THE GOVERNMENT OF MONGOLIA

PACIFIC CONSULTANTS INTERNATIONAL  
 JAPAN OVERSEAS CONSULTANTS  
 Drawing title

PLAN AND PROFILE  
 STA. 327+200 - STA. 327+900  
 (SECTION-6)

AS SHOWN

Sheet No. C-38  
 38/41