

Stationing and Elevation Data:

Station	Original Ground Elevation	Finished Grade Elevation
317+400	1123.354	1123.354
317+404	1122.012	1123.243
317+408	1121.716	1123.089
317+412	1121.421	1122.893
317+416	1121.126	1122.695
317+420	1120.831	1122.495
317+424	1120.536	1122.295
317+428	1120.241	1122.095
317+432	1119.946	1121.895
317+436	1119.651	1121.695
317+440	1119.356	1121.495
317+444	1119.061	1121.295
317+448	1118.766	1121.095
317+452	1118.471	1120.895
317+456	1118.176	1120.695
317+460	1117.881	1120.495
317+464	1117.586	1120.295
317+468	1117.291	1120.095
317+472	1117.000	1119.895
317+476	1116.705	1119.695
317+480	1116.410	1119.495
317+484	1116.115	1119.295
317+488	1115.820	1119.095
317+492	1115.525	1118.895
317+496	1115.230	1118.695
317+500	1114.935	1118.495
317+504	1114.640	1118.295
317+508	1114.345	1118.095
317+512	1114.050	1117.895
317+516	1113.755	1117.695
317+520	1113.460	1117.495
317+524	1113.165	1117.295
317+528	1112.870	1117.095
317+532	1112.575	1116.895
317+536	1112.280	1116.695
317+540	1111.985	1116.495
317+544	1111.690	1116.295
317+548	1111.395	1116.095
317+552	1111.100	1115.895
317+556	1110.805	1115.695
317+560	1110.510	1115.495
317+564	1110.215	1115.295
317+568	1109.920	1115.095
317+572	1109.625	1114.895
317+576	1109.330	1114.695
317+580	1109.035	1114.495
317+584	1108.740	1114.295
317+588	1108.445	1114.095
317+592	1108.150	1113.895
317+596	1107.855	1113.695
318+000	1107.560	1113.495
318+004	1107.265	1113.295
318+008	1106.970	1113.095
318+012	1106.675	1112.895
318+016	1106.380	1112.695
318+020	1106.085	1112.495
318+024	1105.790	1112.295
318+028	1105.495	1112.095
318+032	1105.200	1111.895
318+036	1104.905	1111.695
318+040	1104.610	1111.495
318+044	1104.315	1111.295
318+048	1104.020	1111.095
318+052	1103.725	1110.895
318+056	1103.430	1110.695
318+060	1103.135	1110.495
318+064	1102.840	1110.295
318+068	1102.545	1110.095
318+072	1102.250	1109.895
318+076	1101.955	1109.695
318+080	1101.660	1109.495
318+084	1101.365	1109.295
318+088	1101.070	1109.095
318+092	1100.775	1108.895
318+096	1100.480	1108.695
318+100	1100.185	1108.495

Vertical Curve Data Table:

Station	Original Ground Elevation	Finished Grade Elevation
317+400	1123.354	1123.354
317+404	1122.012	1123.243
317+408	1121.716	1123.089
317+412	1121.421	1122.893
317+416	1121.126	1122.695
317+420	1120.831	1122.495
317+424	1120.536	1122.295
317+428	1120.241	1122.095
317+432	1119.946	1121.895
317+436	1119.651	1121.695
317+440	1119.356	1121.495
317+444	1119.061	1121.295
317+448	1118.766	1121.095
317+452	1118.471	1120.895
317+456	1118.176	1120.695
317+460	1117.881	1120.495
317+464	1117.586	1120.295
317+468	1117.291	1120.095
317+472	1117.000	1119.895
317+476	1116.705	1119.695
317+480	1116.410	1119.495
317+484	1116.115	1119.295
317+488	1115.820	1119.095
317+492	1115.525	1118.895
317+496	1115.230	1118.695
317+500	1114.935	1118.495
317+504	1114.640	1118.295
317+508	1114.345	1118.095
317+512	1114.050	1117.895
317+516	1113.755	1117.695
317+520	1113.460	1117.495
317+524	1113.165	1117.295
317+528	1112.870	1117.095
317+532	1112.575	1116.895
317+536	1112.280	1116.695
317+540	1111.985	1116.495
317+544	1111.690	1116.295
317+548	1111.395	1116.095
317+552	1111.100	1115.895
317+556	1110.805	1115.695
317+560	1110.510	1115.495
317+564	1110.215	1115.295
317+568	1109.920	1115.095
317+572	1109.625	1114.895
317+576	1109.330	1114.695
317+580	1109.035	1114.495
317+584	1108.740	1114.295
317+588	1108.445	1114.095
317+592	1108.150	1113.895
317+596	1107.855	1113.695
318+000	1107.560	1113.495
318+004	1107.265	1113.295
318+008	1106.970	1113.095
318+012	1106.675	1112.895
318+016	1106.380	1112.695
318+020	1106.085	1112.495
318+024	1105.790	1112.295
318+028	1105.495	1112.095
318+032	1105.200	1111.895
318+036	1104.905	1111.695
318+040	1104.610	1111.495
318+044	1104.315	1111.295
318+048	1104.020	1111.095
318+052	1103.725	1110.895
318+056	1103.430	1110.695
318+060	1103.135	1110.495
318+064	1102.840	1110.295
318+068	1102.545	1110.095
318+072	1102.250	1109.895
318+076	1101.955	1109.695
318+080	1101.660	1109.495
318+084	1101.365	1109.295
318+088	1101.070	1109.095
318+092	1100.775	1108.895
318+096	1100.480	1108.695
318+100	1100.185	1108.495

THE BASIC DESIGN STUDY ON CONSTRUCTION OF EASTERN ARTERIAL ROAD IN MONGOLIA

JAPAN INTERNATIONAL COOPERATION AGENCY (JICA)

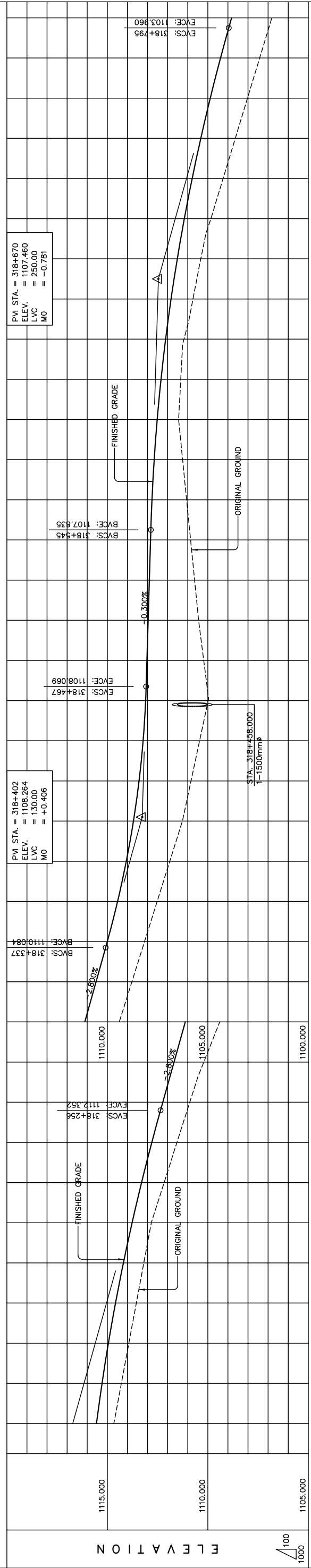
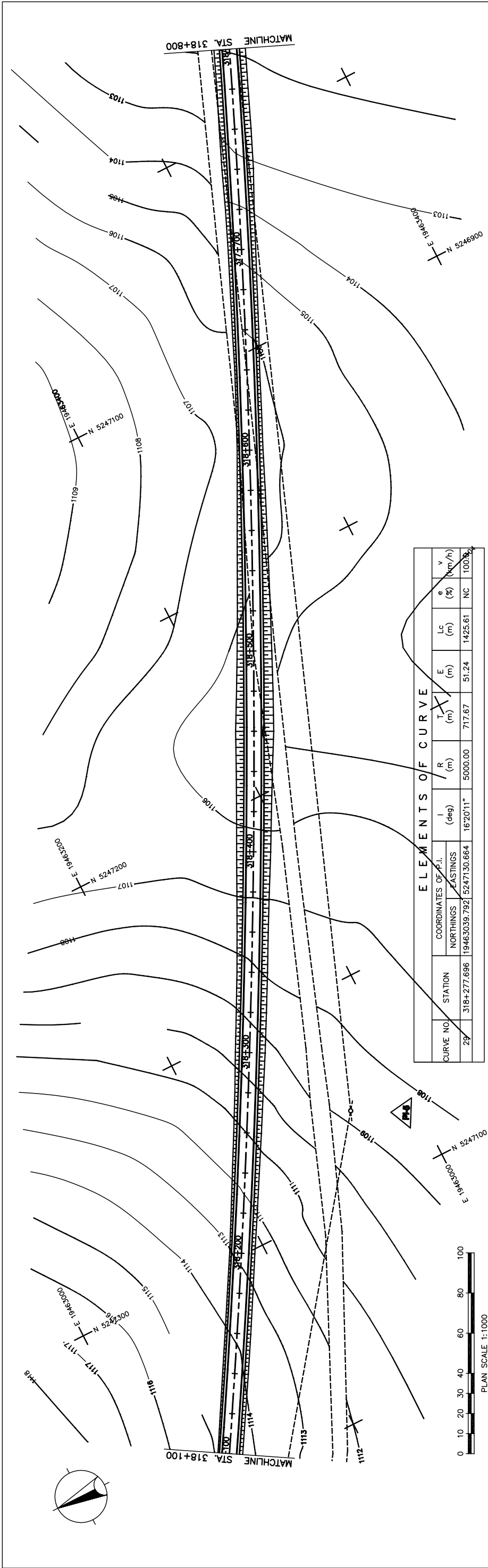
DEPARTMENT OF ROADS,
MINISTRY OF INFRASTRUCTURE,
THE GOVERNMENT OF MONGOLIA

PACIFIC CONSULTANTS INTERNATIONAL
JAPAN OVERSEAS CONSULTANTS

Scale: AS SHOWN

PLAN AND PROFILE
STA. 317+400 - STA. 318+100
(SECTION-6)

Sheet No. C-24
24/41



STATION	FINISHED GRADE	ORIGINAL GROUND	HORIZONTAL CURVATURE	VERTICAL CURVATURE	SUPERELEVATION
318+100	1115.541	1115.541			
	1114.302	1115.264			
	1113.930	1114.948			
	1113.557	1114.593			
	1113.185	1114.200			
	1112.812	1113.768			
	1112.440	1113.297			
	1112.068	1112.787			
	1111.696	1112.240			
	1111.324	1111.680			
	1110.952	1111.120			
	1110.580	1110.560			
	1110.208	1110.000			
	1109.836	1109.440			
	1109.464	1108.880			
	1109.092	1108.320			
	1108.720	1107.760			
	1108.348	1107.200			
	1107.976	1106.640			
	1107.604	1106.080			
	1107.232	1105.520			
	1106.860	1104.960			
	1106.488	1104.400			
	1106.116	1103.840			
	1105.744	1103.280			
	1105.372	1102.720			
	1105.000	1102.160			
	1104.628	1101.600			
	1104.256	1101.040			
	1103.884	1100.480			
	1103.512	1099.920			
	1103.140	1099.360			
	1102.768	1098.800			
	1102.396	1098.240			
	1102.024	1097.680			
	1101.652	1097.120			
	1101.280	1096.560			
	1100.908	1096.000			
	1100.536	1095.440			
	1100.164	1094.880			
	1100.000	1094.800			

Vertical Curve Parameters:
 L = 1425.608 m
 LVC = 250.00 m
 R = 5000.00 m
 LVC = 130.00 m
 g = -0.300%
 g = -2.800%

THE BASIC DESIGN STUDY ON CONSTRUCTION OF EASTERN ARTERIAL ROAD IN MONGOLIA

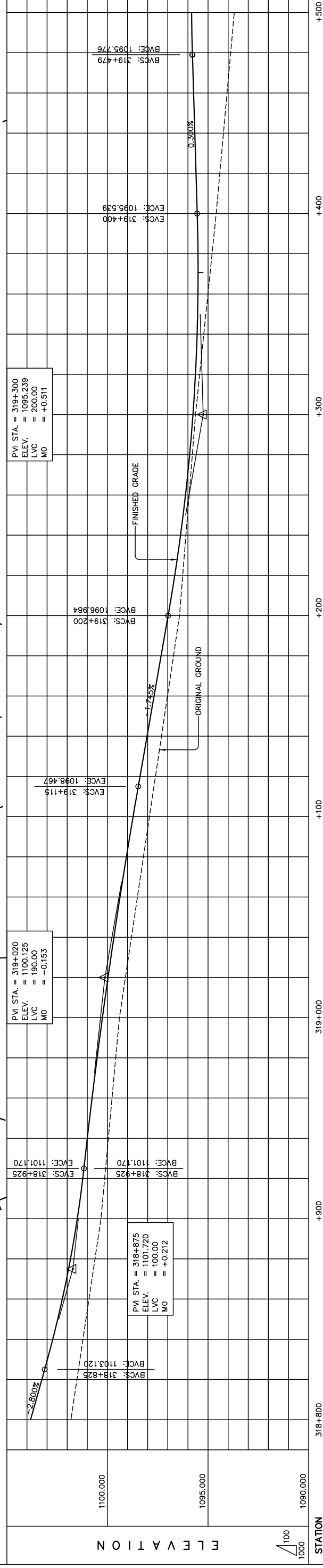
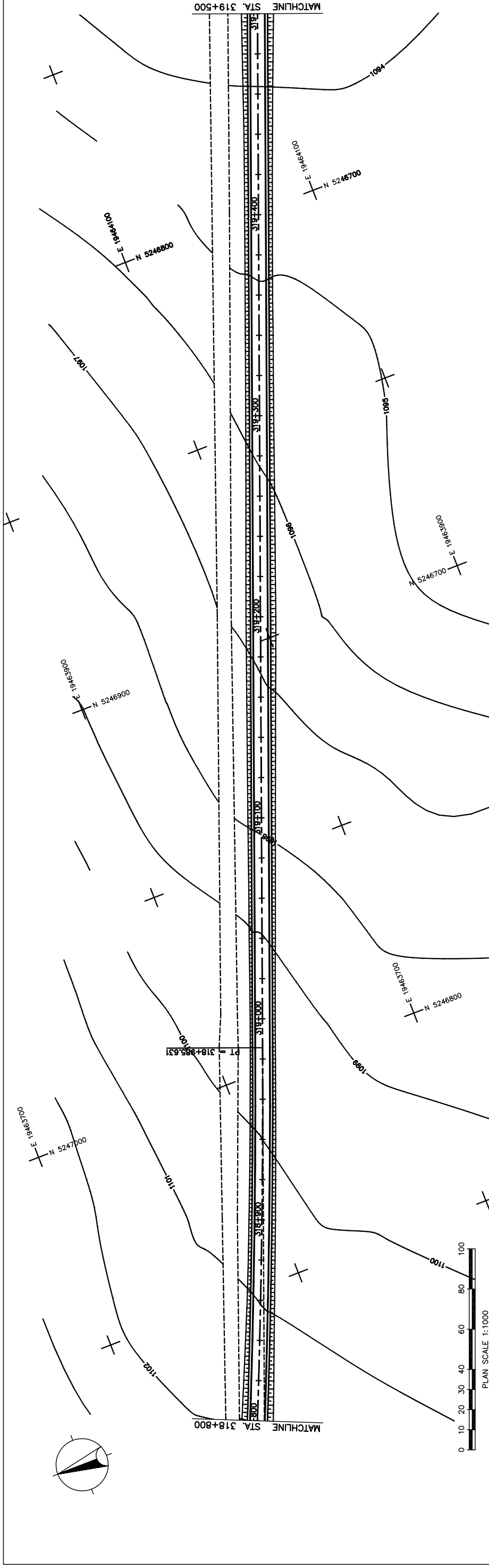
JAPAN INTERNATIONAL COOPERATION AGENCY (JICA)
 DEPARTMENT OF ROADS,
 MINISTRY OF INFRASTRUCTURE,
 THE GOVERNMENT OF MONGOLIA

PACIFIC CONSULTANTS INTERNATIONAL
 JAPAN OVERSEAS CONSULTANTS

Scale: AS SHOWN

Sheet No. C-25 (25/41)

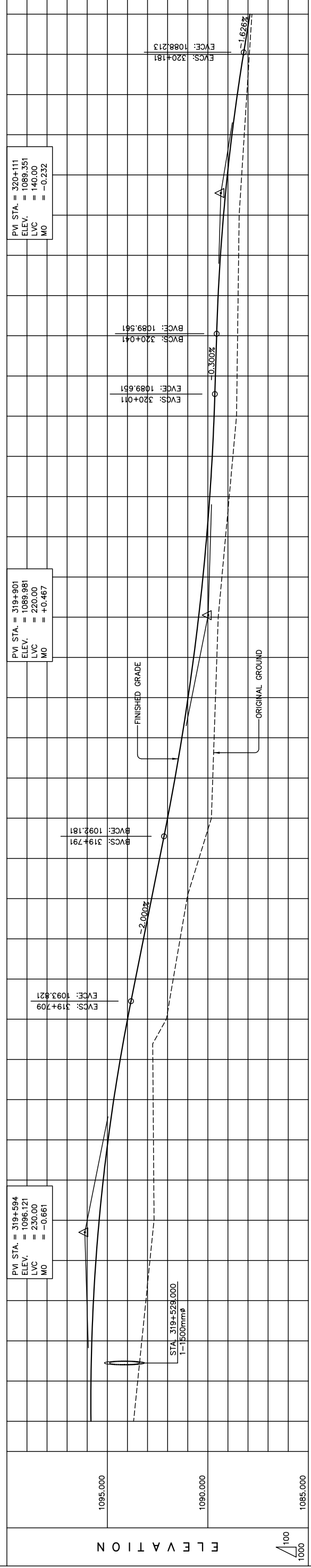
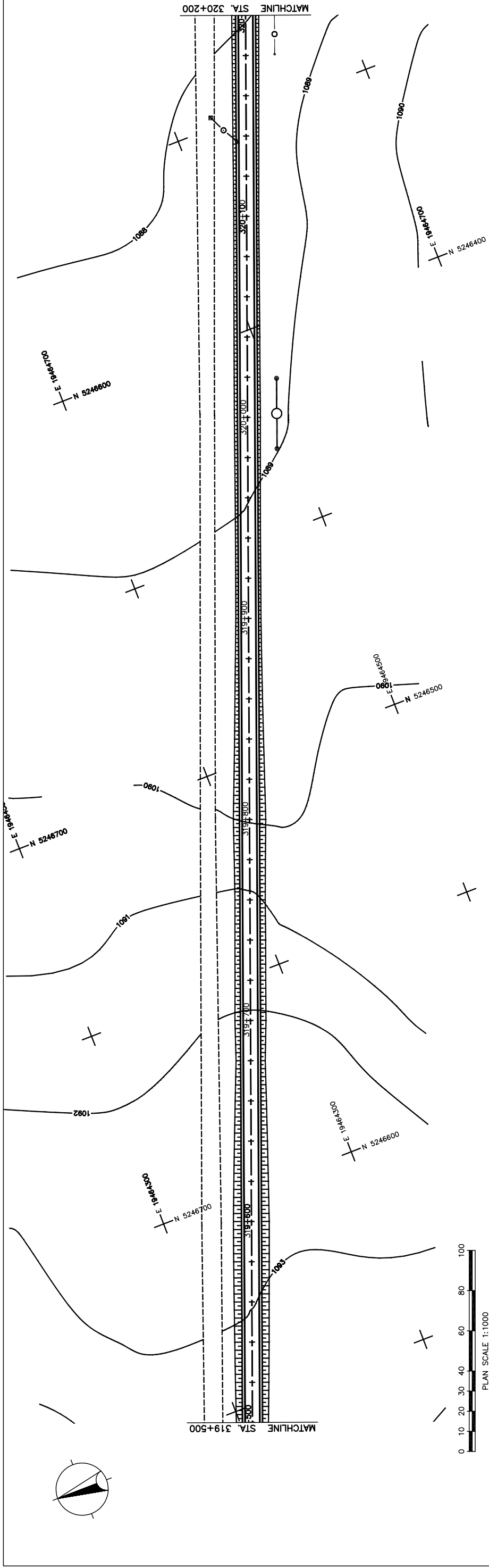
PLAN AND PROFILE
 STA. 318+100 - STA. 318+800
 (SECTION-6)



ELEVATION	STATION	FINISHED GRADE	ORIGINAL GROUND	HORIZONTAL CURVATURE	VERTICAL CURVATURE	SUPERELEVATION
1103.820	318+814	1103.820	1103.820			
1103.260	318+815	1103.260	1103.260			
1102.719	318+816	1102.719	1102.719			
1102.244	318+818	1102.244	1102.244			
1101.837	318+819	1101.837	1101.837			
1101.498	318+820	1101.498	1101.498			
1101.227	318+837	1101.227	1101.227			
1101.001	318+844	1101.001	1101.001			
1100.764	318+850	1100.764	1100.764			
1100.513	318+858	1100.513	1100.513			
1100.249	318+864	1100.249	1100.249			
1099.971	318+870	1099.971	1099.971			
1099.680	318+877	1099.680	1099.680			
1099.375	318+884	1099.375	1099.375			
1098.508	318+891	1098.508	1098.508			
1098.210	318+898	1098.210	1098.210			
1097.911	318+905	1097.911	1097.911			
1098.380	318+912	1098.380	1098.380			
1097.612	318+919	1097.612	1097.612			
1098.031	318+926	1098.031	1098.031			
1097.313	318+933	1097.313	1097.313			
1097.015	318+940	1097.015	1097.015			
1096.333	318+947	1096.333	1096.333			
1096.417	318+954	1096.417	1096.417			
1096.984	318+961	1096.984	1096.984			
1096.258	318+968	1096.258	1096.258			
1096.367	318+975	1096.367	1096.367			
1095.940	318+982	1095.940	1095.940			
1095.781	318+989	1095.781	1095.781			
1095.622	318+996	1095.622	1095.622			
1095.210	319+003	1095.210	1095.210			
1095.543	319+010	1095.543	1095.543			
1095.005	319+017	1095.005	1095.005			
1094.799	319+024	1094.799	1094.799			
1094.539	319+031	1094.539	1094.539			
1094.413	319+038	1094.413	1094.413			
1094.234	319+045	1094.234	1094.234			
1093.875	319+052	1093.875	1093.875			
1093.695	319+059	1093.695	1093.695			
1093.816	319+066	1093.816	1093.816			

Figure 2-2-3-76 Plan and Profile (Section VI Sta.318+800-Sta.319+500)

THE BASIC DESIGN STUDY ON CONSTRUCTION OF EASTERN ARTERIAL ROAD IN MONGOLIA
 DEPARTMENT OF ROADS,
 MINISTRY OF INFRASTRUCTURE,
 THE GOVERNMENT OF MONGOLIA
 JAPAN INTERNATIONAL COOPERATION AGENCY (JICA)
 PACIFIC CONSULTANTS INTERNATIONAL
 JAPAN OVERSEAS CONSULTANTS
 Scale AS SHOWN
 PLAN AND PROFILE
 STA. 318+800 - STA. 319+500
 (SECTION-6)
 Sheet No. C-26
 26/41



STATION	FINISHED GRADE	ORIGINAL GROUND	HORIZONTAL CURVATURE	VERTICAL CURVATURE	SUPERELEVATION
319+500	1093.695	1095.816			
	1093.491	1095.814			
	1093.287	1095.772			
	1093.083	1095.690			
	1092.879	1095.568			
	1092.675	1095.466			
	1092.690	1095.204			
	1092.706	1094.962			
	1092.721	1094.680			
	1092.736	1094.358			
	1092.663	1093.996			
	1091.720	1093.601			
	1091.378	1093.201			
	1091.035	1092.801			
	1090.440	1092.401			
	1089.823	1092.004			
	1089.755	1091.633			
	1089.687	1091.293			
	1089.618	1090.984			
	1089.550	1090.707			
	1089.482	1090.460			
	1089.300	1090.243			
	1089.118	1090.058			
	1088.935	1089.904			
	1088.753	1089.781			
	1088.571	1089.688			
	1088.545	1089.624			
	1088.519	1089.564			
	1088.493	1089.486			
	1088.467	1089.371			
	1088.441	1089.219			
	1088.314	1089.028			
	1088.187	1088.799			
	1088.061	1088.533			
	1087.934	1088.229			
	1087.807	1087.904			

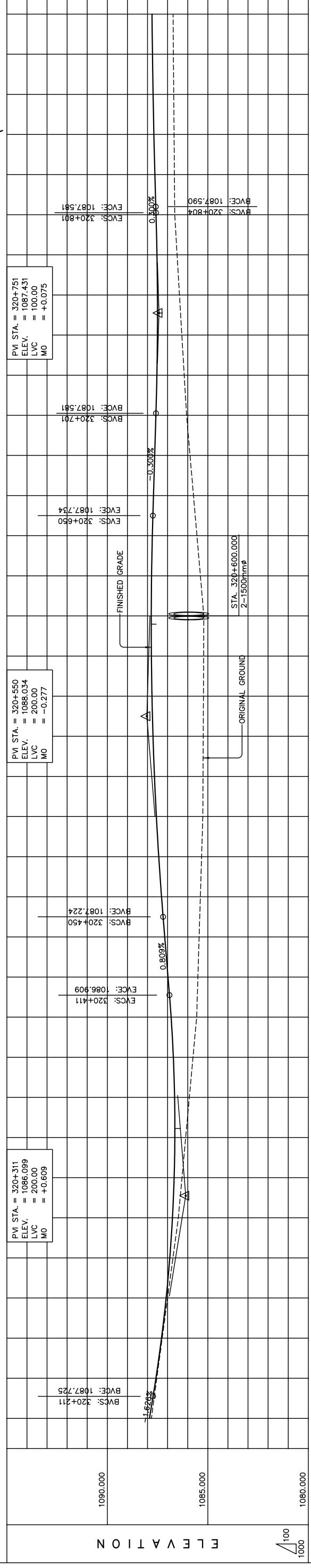
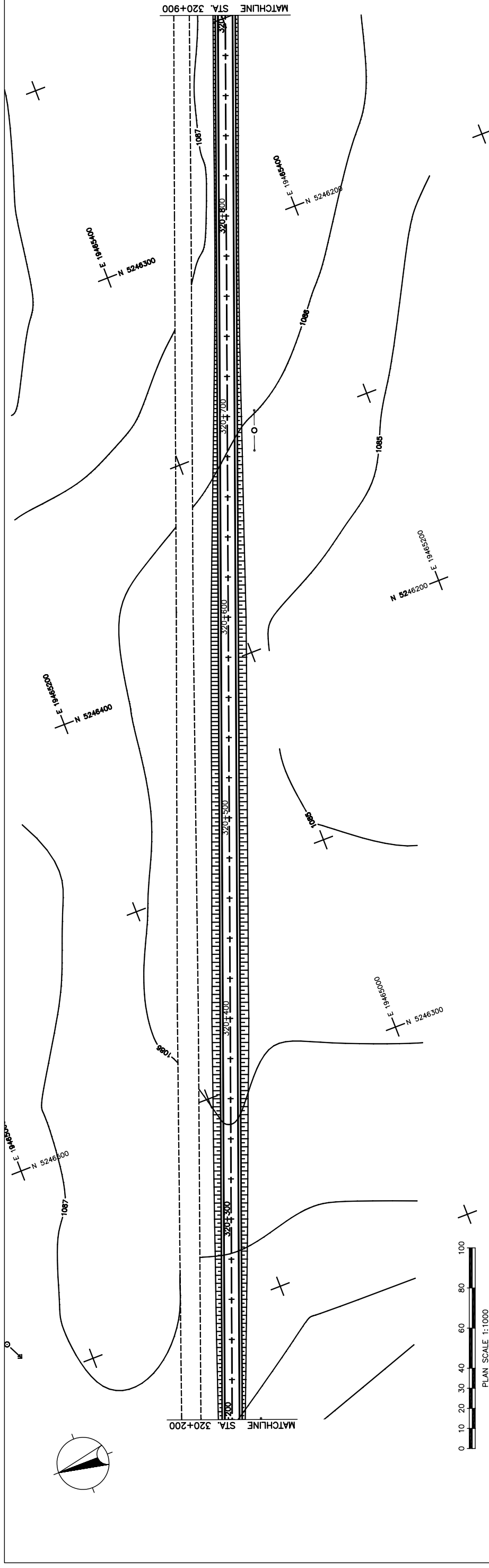
STRAIGHT

$g = -2.000\%$ $LVC = 230.00 \text{ m}$ $g = -0.300\%$ $LVC = 140.00 \text{ m}$ $g = -1.626\%$

N.C.

THE BASIC DESIGN STUDY ON CONSTRUCTION OF EASTERN ARTERIAL ROAD IN MONGOLIA	
JAPAN INTERNATIONAL COOPERATION AGENCY (JICA)	DEPARTMENT OF ROADS, MINISTRY OF INFRASTRUCTURE, THE GOVERNMENT OF MONGOLIA
PACIFIC CONSULTANTS INTERNATIONAL JAPAN OVERSEAS CONSULTANTS	
Drawing title	Scale
PLAN AND PROFILE STA. 319+500 - STA. 320+200 (SECTION-6)	
Sheet No.	AS SHOWN
C-27	27/41

Figure 2-2-3-77 Plan and Profile (Section VI Sta.319+500-Sta.320+200)



STATION	FINISHED GRADE	ORIGINAL GROUND	HORIZONTAL CURVATURE	VERTICAL CURVATURE	SUPERELEVATION
1087.807	1087.904	1087.539			
1087.271	1087.305	1087.003			
1087.735	1086.893	1086.467			
1086.285	1086.676	1086.285			
1086.102	1086.641	1086.920			
1085.737	1086.716	1085.920			
1085.555	1086.827	1085.737			
1085.494	1086.981	1085.555			
1085.433	1087.143	1085.494			
1085.371	1087.302	1085.371			
1085.310	1087.442	1085.310			
1085.249	1087.559	1085.249			
1085.239	1087.655	1085.239			
1085.229	1087.728	1085.229			
1085.218	1087.779	1085.218			
1085.208	1087.808	1085.208			
1085.198	1087.814	1085.198			
1085.370	1087.799	1085.370			
1085.542	1087.761	1085.542			
1085.713	1087.704	1085.713			
1085.885	1087.644	1085.885			
1086.057	1087.584	1086.057			
1086.175	1087.534	1086.175			
1086.293	1087.509	1086.293			
1086.411	1087.508	1086.411			
1086.529	1087.531	1086.529			
1086.647	1087.578	1086.647			
1086.663	1087.635	1086.663			
1086.680	1087.683	1086.680			
1086.696	1087.723	1086.696			
1086.713	1087.754	1086.713			
1086.729	1087.776	1086.729			

STRAIGHT
LVC = 200.00 m

g = 0.809%

LVC = 100.00 m

g = -0.300%

g = 0.300%

N.C.

THE BASIC DESIGN STUDY ON CONSTRUCTION OF EASTERN ARTERIAL ROAD IN MONGOLIA

JAPAN INTERNATIONAL COOPERATION AGENCY (JICA)

PACIFIC CONSULTANTS INTERNATIONAL
JAPAN OVERSEAS CONSULTANTS

DEPARTMENT OF ROADS,
MINISTRY OF INFRASTRUCTURE,
THE GOVERNMENT OF MONGOLIA

AS SHOWN

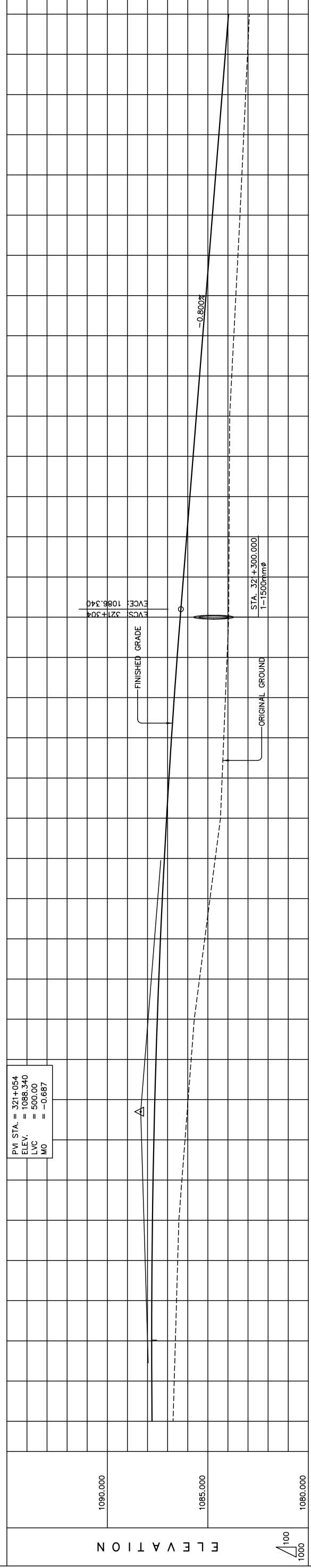
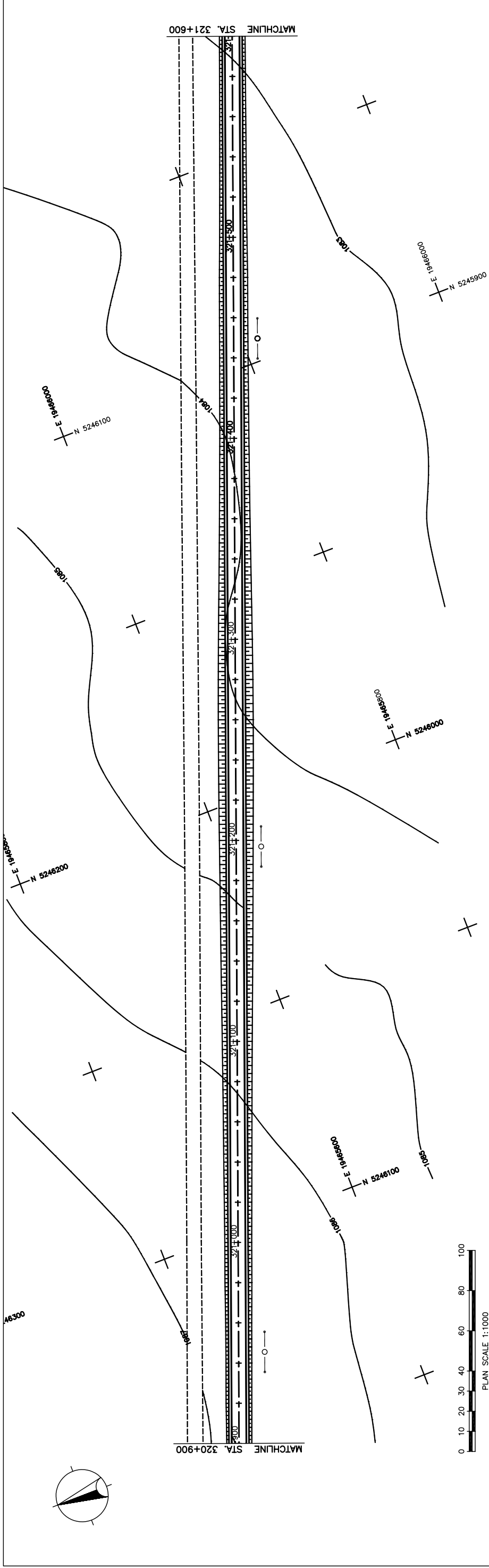
Scale

Sheet No.

C-28
28/41

PLAN AND PROFILE
STA. 320+200 - STA. 320+900
(SECTION-6)

Figure 2-2-3-78 Plan and Profile (Section VI Sta.320+200-Sta.320+900)



STATION	FINISHED GRADE	ORIGINAL GROUND	HORIZONTAL CURVATURE	VERTICAL CURVATURE	SUPERELEVATION
320+900	1086.729	1087.776			
	1086.672	1087.789			
	1086.614	1087.794			
	1086.557	1087.790			
	1086.499	1087.777			
	1086.442	1087.755			
321+000	1086.289	1087.724			
	1086.135	1087.685			
	1085.982	1087.637			
	1085.828	1087.580			
	1085.675	1087.514			
	1085.414	1087.439			
	1085.153	1087.356			
	1084.892	1087.263			
	1084.631	1087.162			
	1084.370	1087.053			
	1084.288	1086.934			
	1084.207	1086.806			
	1084.125	1086.670			
	1084.044	1086.525			
	1083.962	1086.371			
	1083.952	1086.212			
	1083.943	1086.052			
	1083.933	1085.892			
	1083.924	1085.732			
	1083.914	1085.572			
	1083.811	1085.412			
	1083.708	1085.252			
	1083.605	1085.092			
	1083.502	1084.932			
	1083.399	1084.772			
	1083.306	1084.612			
	1083.213	1084.452			
	1083.119	1084.292			
	1083.026	1084.132			
321+600	1082.933	1083.972			

STRAIGHT
LVC = 500.00 m
g = -0.800%

THE BASIC DESIGN STUDY ON CONSTRUCTION OF EASTERN ARTERIAL ROAD IN MONGOLIA	
JAPAN INTERNATIONAL COOPERATION AGENCY (JICA)	DEPARTMENT OF ROADS, MINISTRY OF INFRASTRUCTURE, THE GOVERNMENT OF MONGOLIA
PACIFIC CONSULTANTS INTERNATIONAL JAPAN OVERSEAS CONSULTANTS	Scale
Drawing title	Sheet No.
PLAN AND PROFILE STA. 320+900 - STA. 321+600 (SECTION-6)	AS SHOWN
	C-29 29/41

Figure 2-2-3-79 Plan and Profile (Section VI Sta.320+900-Sta.321+600)

