

Figure 2-2-3-67 Plan and Profile (Section VI Sta.312+500-Sta.313+200)

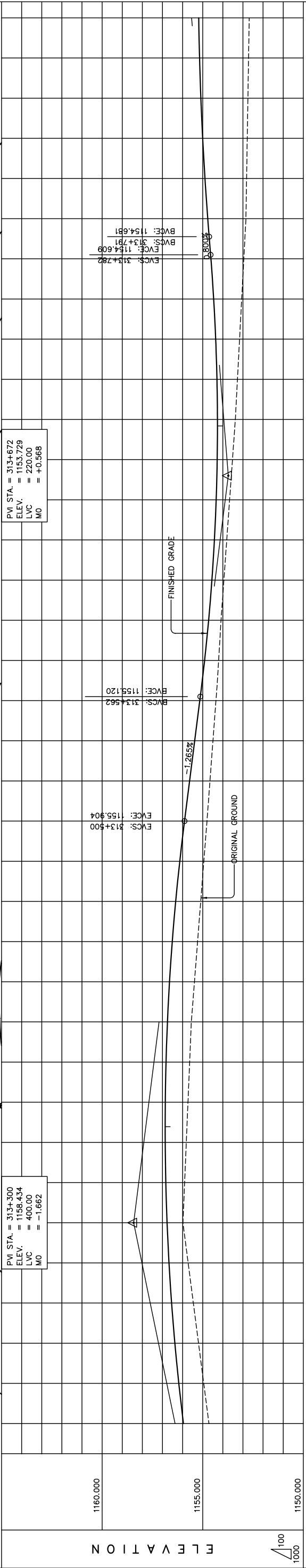
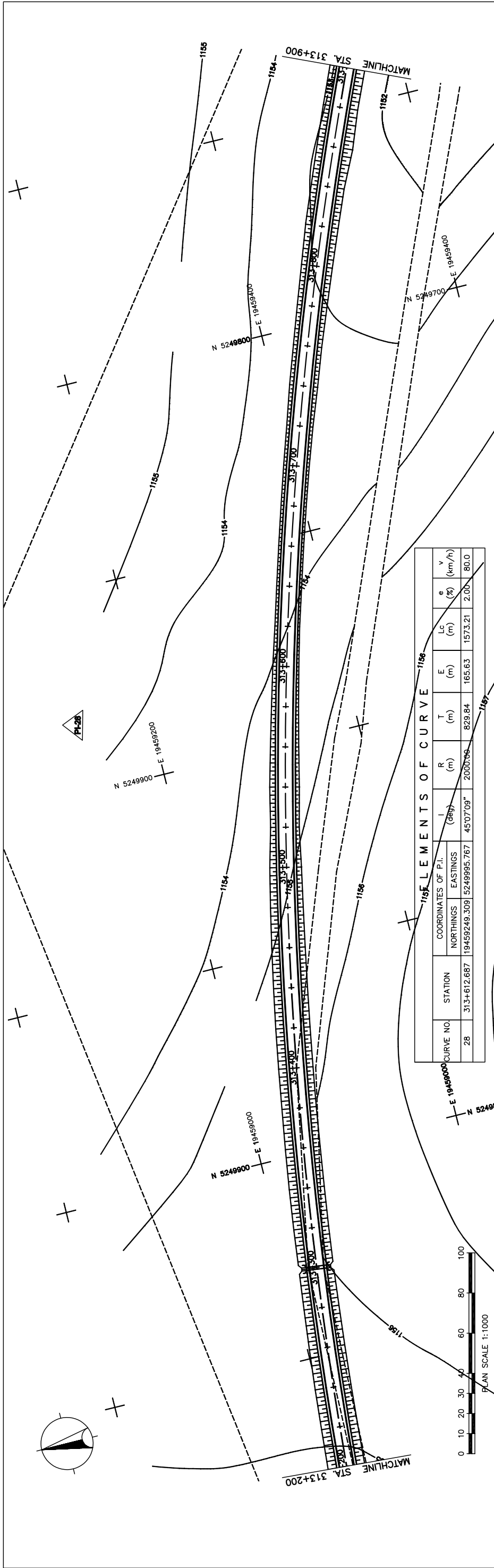
THE BASIC DESIGN STUDY ON CONSTRUCTION OF EASTERN ARTERIAL ROAD IN MONGOLIA

JAPAN INTERNATIONAL COOPERATION AGENCY (JICA)
 DEPARTMENT OF ROADS,
 MINISTRY OF INFRASTRUCTURE,
 THE GOVERNMENT OF MONGOLIA

PACIFIC CONSULTANTS INTERNATIONAL
 JAPAN OVERSEAS CONSULTANTS

Scale: AS SHOWN

Sheet No. C-17 (1/4)



STATION	FINISHED GRADE	ORIGINAL GROUND	HORIZONTAL CURVATURE	VERTICAL CURVATURE	SUPERELEVATION
1154.691	1155.959	1154.949	1156.188	1155.208	1156.384
1155.411	1156.650	1155.411	1156.650	1155.411	1156.650
1155.295	1156.513	1155.295	1156.513	1155.295	1156.513
1155.100	1156.343	1155.100	1156.343	1155.100	1156.343
1154.944	1156.140	1154.944	1156.140	1154.944	1156.140
1154.789	1155.904	1154.789	1155.904	1154.789	1155.904
1154.640	1155.651	1154.640	1155.651	1154.640	1155.651
1154.491	1155.398	1154.491	1155.398	1154.491	1155.398
1154.342	1155.145	1154.342	1155.145	1154.342	1155.145
1154.209	1154.907	1154.209	1154.907	1154.209	1154.907
1154.090	1154.707	1154.090	1154.707	1154.090	1154.707
1153.948	1154.544	1153.948	1154.544	1153.948	1154.544
1153.806	1154.419	1153.806	1154.419	1153.806	1154.419
1153.663	1154.331	1153.663	1154.331	1153.663	1154.331
1153.521	1154.281	1153.521	1154.281	1153.521	1154.281
1153.379	1154.268	1153.379	1154.268	1153.379	1154.268
1153.274	1154.293	1153.274	1154.293	1153.274	1154.293
1153.168	1154.355	1153.168	1154.355	1153.168	1154.355
1153.063	1154.455	1153.063	1154.455	1153.063	1154.455
1152.957	1154.593	1152.957	1154.593	1152.957	1154.593
1152.852	1154.750	1152.852	1154.750	1152.852	1154.750
1152.819	1154.887	1152.819	1154.887	1152.819	1154.887
1152.787	1155.001	1152.787	1155.001	1152.787	1155.001
1152.754	1155.091	1152.754	1155.091	1152.754	1155.091
1152.722	1155.157	1152.722	1155.157	1152.722	1155.157
1152.689	1155.199	1152.689	1155.199	1152.689	1155.199

THE BASIC DESIGN STUDY ON CONSTRUCTION OF EASTERN ARTERIAL ROAD IN MONGOLIA

JAPAN INTERNATIONAL COOPERATION AGENCY (JICA)
 DEPARTMENT OF ROADS,
 MINISTRY OF INFRASTRUCTURE,
 THE GOVERNMENT OF MONGOLIA

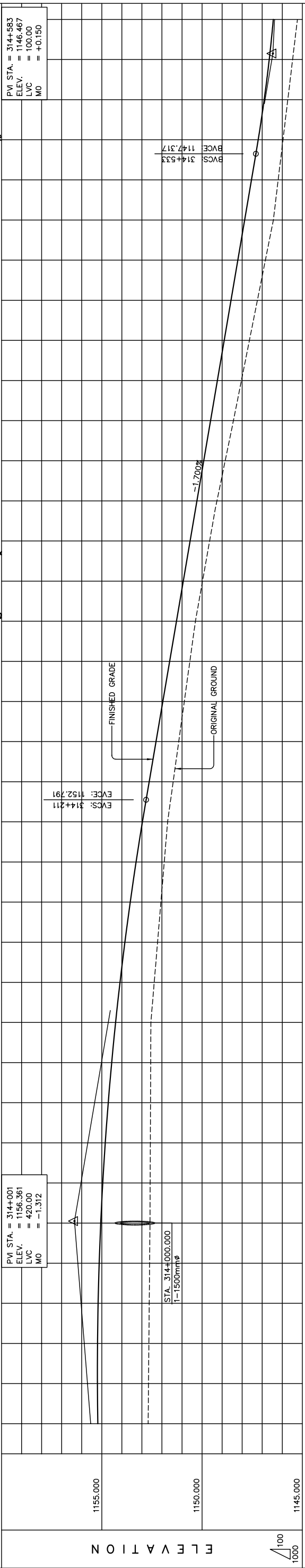
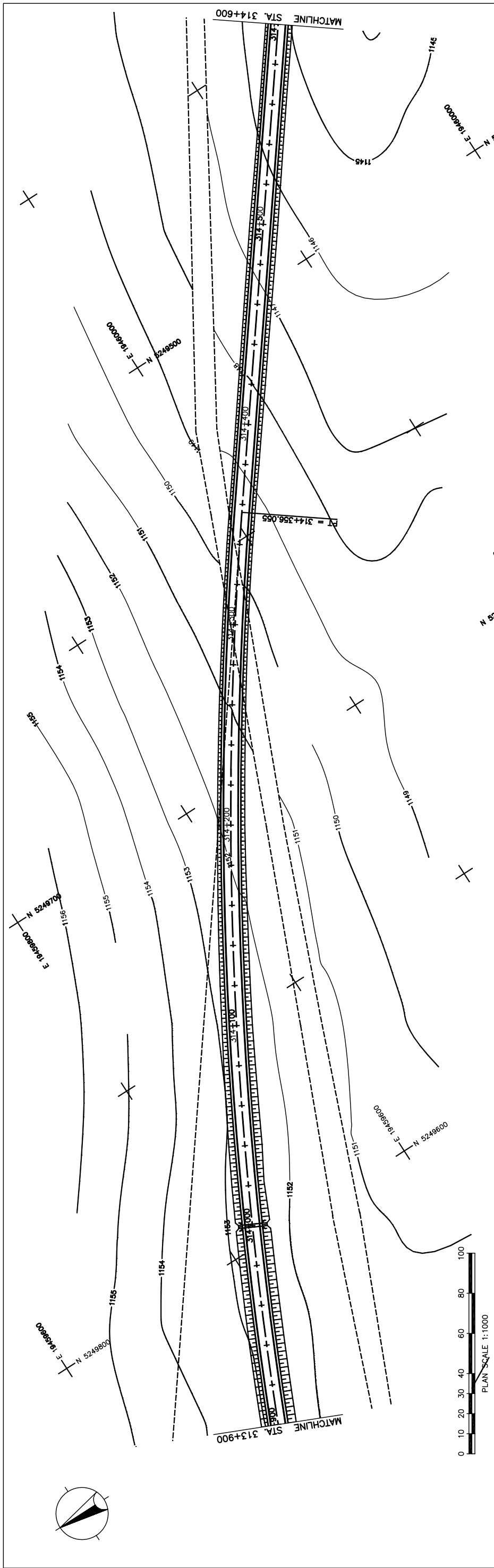
PACIFIC CONSULTANTS INTERNATIONAL
 JAPAN OVERSEAS CONSULTANTS

Scale: AS SHOWN

Sheet No. C-18 (18/41)

PLAN AND PROFILE
 STA. 313+200 - STA. 313+900
 (SECTION-6)

Figure 2-2-3-68 Plan and Profile (Section VI Sta.313+200-313+900)

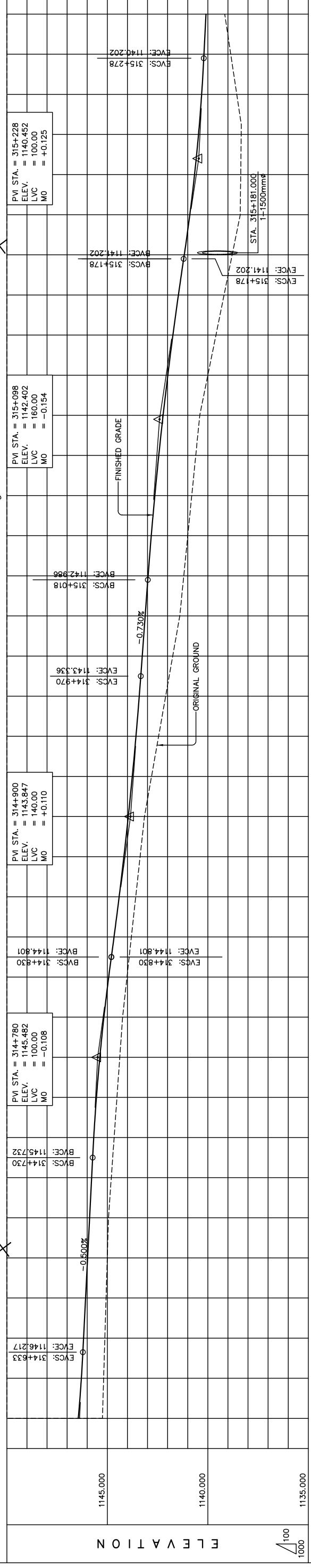
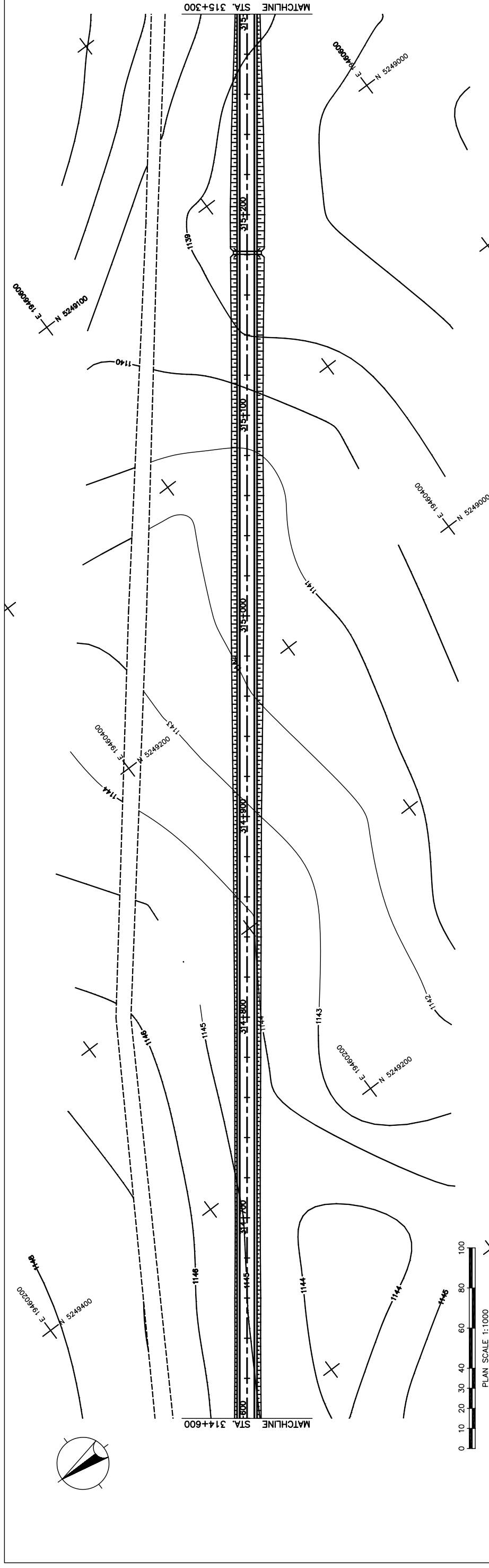


STATION	FINISHED GRADE	ORIGINAL GROUND	HORIZONTAL CURVATURE	VERTICAL CURVATURE	SUPERELEVATION
313+900	1155.199	1155.217			
	1152.671	1155.212			
	1152.634	1155.182			
	1152.615	1155.129			
	1152.597	1155.052			
	1152.588	1154.952			
	1152.579	1154.827			
	1152.570	1154.679			
	1152.561	1154.507			
	1152.552	1154.311			
	1152.385	1154.091			
	1152.218	1153.847			
	1152.052	1153.580			
	1151.885	1153.289			
	1151.718	1152.974			
	1151.441	1152.638			
	1151.163	1152.298			
	1150.886	1151.958			
	1150.608	1151.618			
	1150.331	1151.278			
	1149.977	1150.938			
	1149.623	1150.598			
	1149.258	1150.258			
	1148.846	1149.918			
	1148.435	1149.578			
	1148.037	1149.238			
	1147.639	1148.898			
	1147.240	1148.558			
	1146.842	1148.218			
	1146.444	1147.878			
	1146.204	1147.538			
	1145.964	1147.200			
	1145.724	1146.901			
	1145.484	1146.650			
	1145.244	1146.447			

THE BASIC DESIGN STUDY ON CONSTRUCTION OF EASTERN ARTERIAL ROAD IN MONGOLIA
 DEPARTMENT OF ROADS,
 MINISTRY OF INFRASTRUCTURE,
 THE GOVERNMENT OF MONGOLIA
 JAPAN INTERNATIONAL COOPERATION AGENCY (JICA)
 PACIFIC CONSULTANTS INTERNATIONAL
 JAPAN OVERSEAS CONSULTANTS
 Drawing title
 Scale
 AS SHOWN
 Sheet No. C-19 (19/41)

PLAN AND PROFILE
 STA. 313+900 - STA. 314+600
 (SECTION-6)

STRAIGHT
 LVC = 420.00 m
 R = 2000.00 L = 1573.208
 g = -1.700%
 e = 2.00%
 e = 2.00%



STATION	FINISHED GRADE	ORIGINAL GROUND	HORIZONTAL CURVATURE	VERTICAL CURVATURE	SUPERELEVATION
314+600	1145.244	1146.447			
	1145.184	1146.292			
	1145.124	1146.182			
	1145.063	1146.082			
	1145.003	1145.982			
	1144.943	1145.882			
	1144.882	1145.782			
	1144.822	1145.672			
	1144.762	1145.572			
	1144.702	1145.472			
	1144.642	1145.372			
	1144.582	1145.272			
	1144.522	1145.172			
	1144.462	1145.072			
	1144.402	1144.972			
	1144.342	1144.872			
	1144.282	1144.772			
	1144.222	1144.672			
	1144.162	1144.572			
	1144.102	1144.472			
	1144.042	1144.372			
	1143.982	1144.272			
	1143.922	1144.172			
	1143.862	1144.072			
	1143.802	1143.972			
	1143.742	1143.872			
	1143.682	1143.772			
	1143.622	1143.672			
	1143.562	1143.572			
	1143.502	1143.472			
	1143.442	1143.372			
	1143.382	1143.272			
	1143.322	1143.172			
	1143.262	1143.072			
	1143.202	1142.972			
	1143.142	1142.872			
	1143.082	1142.772			
	1143.022	1142.672			
	1142.962	1142.572			
	1142.902	1142.472			
	1142.842	1142.372			
	1142.782	1142.272			
	1142.722	1142.172			
	1142.662	1142.072			
	1142.602	1141.972			
	1142.542	1141.872			
	1142.482	1141.772			
	1142.422	1141.672			
	1142.362	1141.572			
	1142.302	1141.472			
	1142.242	1141.372			
	1142.182	1141.272			
	1142.122	1141.172			
	1142.062	1141.072			
	1142.002	1140.972			
	1141.942	1140.872			
	1141.882	1140.772			
	1141.822	1140.672			
	1141.762	1140.572			
	1141.702	1140.472			
	1141.642	1140.372			
	1141.582	1140.272			
	1141.522	1140.172			
	1141.462	1140.072			
	1141.402	1140.000			
	1141.342	1140.000			
	1141.282	1140.000			
	1141.222	1140.000			
	1141.162	1140.000			
	1141.102	1140.000			
	1141.042	1140.000			
	1140.982	1140.000			
	1140.922	1140.000			
	1140.862	1140.000			
	1140.802	1140.000			
	1140.742	1140.000			
	1140.682	1140.000			
	1140.622	1140.000			
	1140.562	1140.000			
	1140.502	1140.000			
	1140.442	1140.000			
	1140.382	1140.000			
	1140.322	1140.000			
	1140.262	1140.000			
	1140.202	1140.000			
	1140.142	1140.000			
	1140.082	1140.000			
	1140.022	1140.000			
	1140.000	1140.000			

STRAIGHT

$g = -0.500\%$ $g = -0.730\%$

LVC = 100.00 m LVC = 140.00 m LVC = 100.00 m

N.C.

THE BASIC DESIGN STUDY ON CONSTRUCTION OF EASTERN ARTERIAL ROAD IN MONGOLIA

JAPAN INTERNATIONAL COOPERATION AGENCY (JICA)

PACIFIC CONSULTANTS INTERNATIONAL
JAPAN OVERSEAS CONSULTANTS

Drawing title

DEPARTMENT OF ROADS,
MINISTRY OF INFRASTRUCTURE,
THE GOVERNMENT OF MONGOLIA

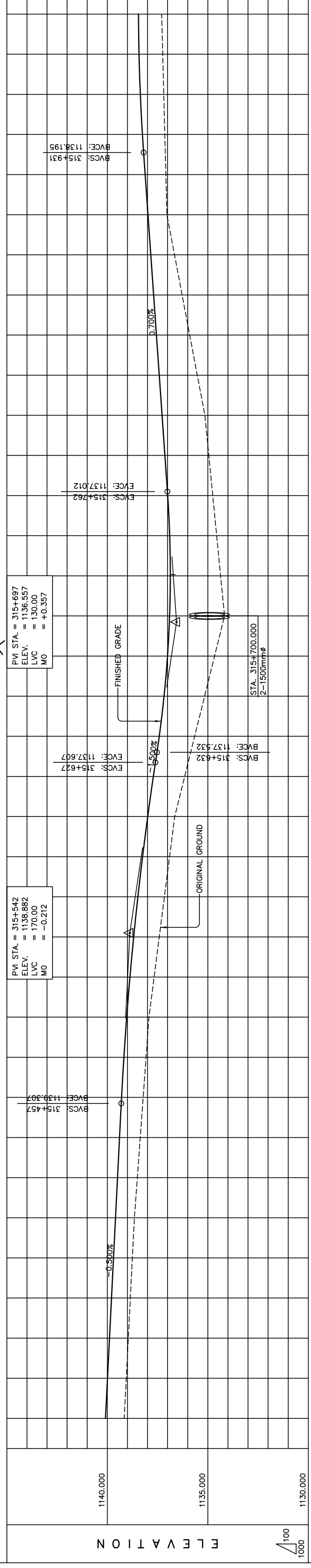
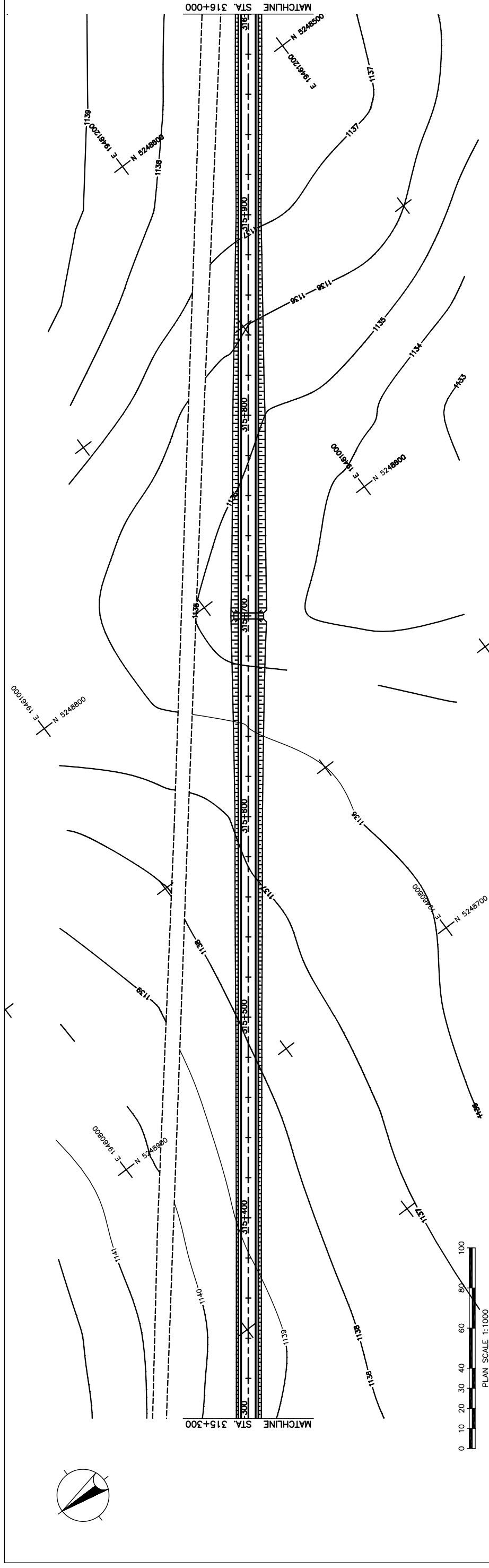
Scale

AS SHOWN

PLAN AND PROFILE
STA. 314+600 - STA. 315+300
(SECTION-6)

Sheet No.

C-20
20/41



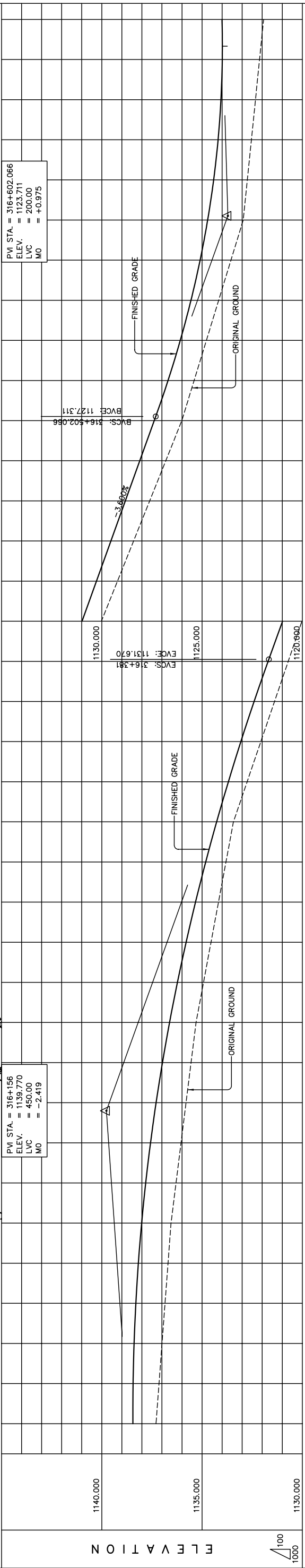
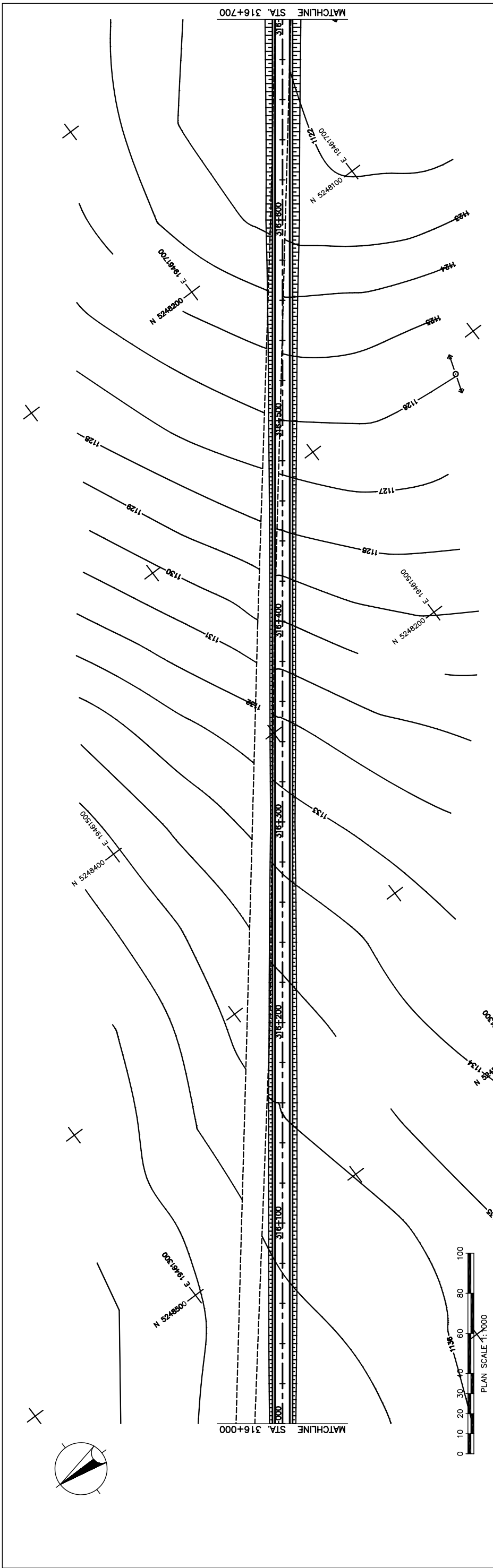
STATION	FINISHED GRADE	ORIGINAL GROUND	HORIZONTAL CURVATURE	VERTICAL CURVATURE	SUPERELEVATION
315+159	1139.159	1140.092			
315+160	1139.159	1139.992			
315+161	1139.159	1139.892			
315+162	1139.159	1139.792			
315+163	1139.159	1139.692			
315+164	1139.159	1139.592			
315+165	1139.159	1139.492			
315+166	1139.159	1139.392			
315+167	1139.159	1139.291			
315+168	1139.159	1139.176			
315+169	1139.159	1139.037			
315+170	1139.159	1138.875			
315+171	1139.159	1138.773			
315+172	1139.159	1138.689			
315+173	1139.159	1138.616			
315+174	1139.159	1138.479			
315+175	1139.159	1138.247			
315+176	1139.159	1137.990			
315+177	1139.159	1137.710			
315+178	1139.159	1137.417			
315+179	1139.159	1137.178			
315+180	1139.159	1137.006			
315+181	1139.159	1136.903			
315+182	1139.159	1136.867			
315+183	1139.159	1136.867			
315+184	1139.159	1136.898			
315+185	1139.159	1136.998			
315+186	1139.159	1137.137			
315+187	1139.159	1137.277			
315+188	1139.159	1137.417			
315+189	1139.159	1137.557			
315+190	1139.159	1137.697			
315+191	1139.159	1137.837			
315+192	1139.159	1137.977			
315+193	1139.159	1138.117			
315+194	1139.159	1138.254			
315+195	1139.159	1138.397			
315+196	1139.159	1138.537			
315+197	1139.159	1138.677			
315+198	1139.159	1138.817			
315+199	1139.159	1138.957			
316+000	1139.159	1139.097			

Figure 2-2-3-71 Plan and Profile (Section VI Sta.315+300-316+000)

THE BASIC DESIGN STUDY ON CONSTRUCTION OF EASTERN ARTERIAL ROAD IN MONGOLIA

JAPAN INTERNATIONAL COOPERATION AGENCY (JICA) PACIFIC CONSULTANTS INTERNATIONAL JAPAN OVERSEAS CONSULTANTS Drawing title	DEPARTMENT OF ROADS, MINISTRY OF INFRASTRUCTURE, THE GOVERNMENT OF MONGOLIA Scale AS SHOWN Sheet No. C-21 21/41
---	--

PLAN AND PROFILE
STA. 315+300 - STA. 316+000
(SECTION-6)



STATION	FINISHED GRADE	ORIGINAL GROUND	HORIZONTAL CURVATURE	VERTICAL CURVATURE	SUPERELEVATION
316+000	1137.296	1138.450			
	1137.146	1138.439			
	1136.996	1138.390			
	1136.847	1138.302			
	1136.697	1138.177			
	1136.547	1138.013			
	1136.297	1137.811			
	1136.048	1137.571			
	1135.798	1137.292			
	1135.549	1136.975			
	1135.299	1136.620			
	1134.926	1136.227			
	1134.553	1135.796			
	1134.181	1135.326			
	1133.808	1134.818			
	1133.435	1134.272			
	1132.752	1133.688			
	1132.069	1133.065			
	1131.386	1132.404			
	1130.703	1131.705			
	1130.020	1130.986			
	1129.218	1130.266			
	1128.415	1129.546			
	1127.613	1128.826			
	1126.810	1128.106			
	1126.008	1127.386			
	1125.396	1126.697			
	1124.784	1126.086			
	1124.171	1125.553			
	1123.559	1125.098			
	1122.947	1124.721			
	1122.743	1124.422			
	1122.540	1124.201			
	1122.336	1124.058			
	1122.133	1123.993			
	1121.929	1124.006			

THE BASIC DESIGN STUDY ON CONSTRUCTION OF EASTERN ARTERIAL ROAD IN MONGOLIA

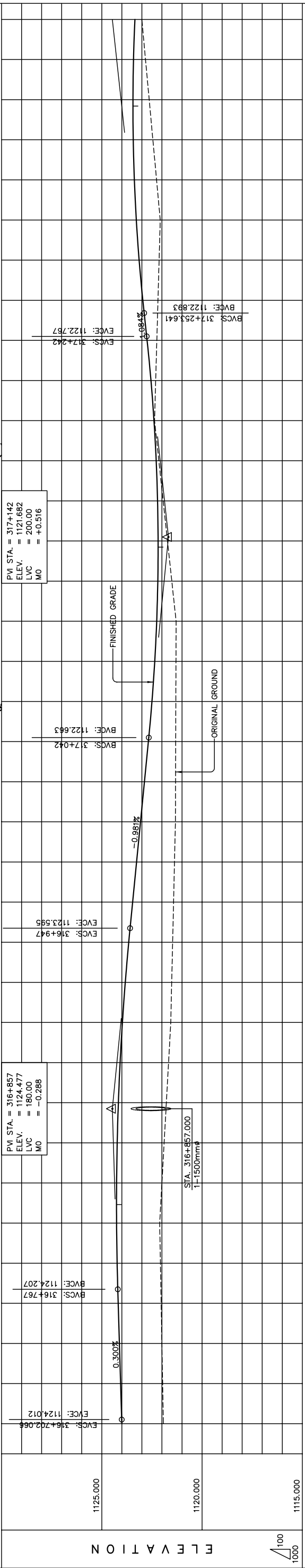
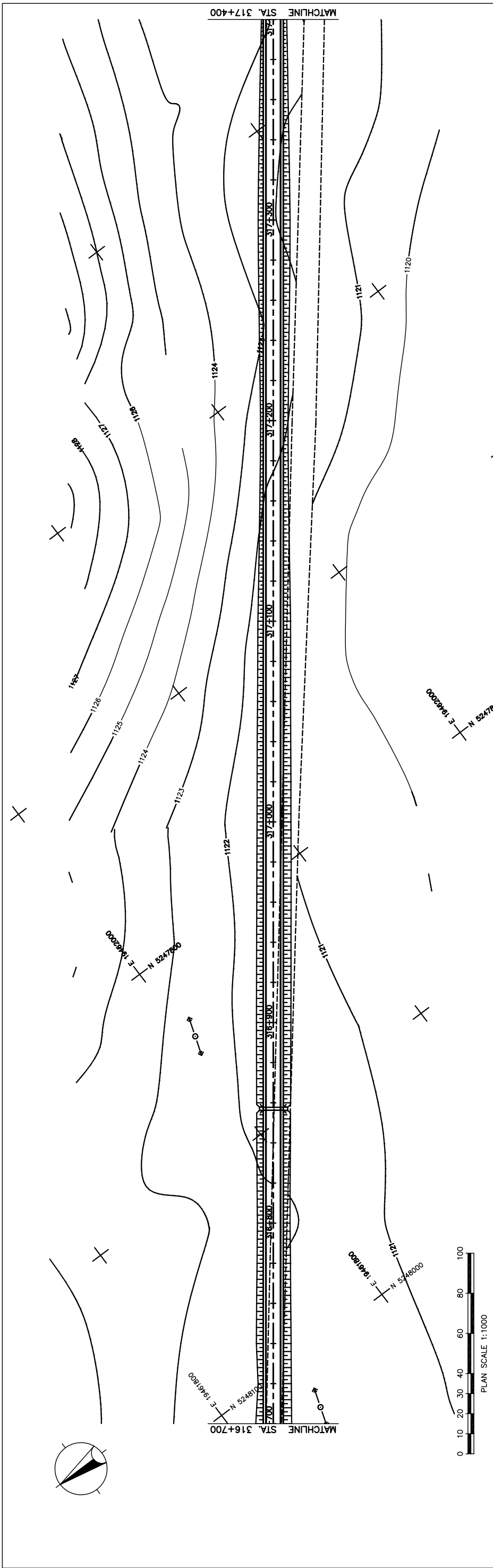
JAPAN INTERNATIONAL COOPERATION AGENCY (JICA)
 DEPARTMENT OF ROADS,
 MINISTRY OF INFRASTRUCTURE,
 THE GOVERNMENT OF MONGOLIA

PACIFIC CONSULTANTS INTERNATIONAL
 JAPAN OVERSEAS CONSULTANTS

Scale: AS SHOWN
 Drawing title: PLAN AND PROFILE
 STA. 316+000 - STA. 316+700
 (SECTION-6)

Sheet No. C-22
 2/41

Figure 2-2-3-72 Plan and Profile (Section VI Sta.316+000-Sta.316+700)



STATION	FINISHED GRADE	ORIGINAL GROUND	HORIZONTAL CURVATURE	VERTICAL CURVATURE	SUPERELEVATION
316+700	1121.929	1124.006		$g = 0.300\%$	
	1121.966	1124.066			
	1122.002	1124.126			
	1122.039	1124.186			
	1122.075	1124.240			
	1122.112	1124.267			
	1122.002	1124.266			
	1121.891	1124.236			
	1121.781	1124.178			
	1121.670	1124.092			
	1121.560	1123.977			
	1121.514	1123.933			
	1121.467	1123.662			
	1121.467	1123.662			
	1121.421	1123.467			
	1121.374	1123.271			
	1121.328	1123.075			
	1121.294	1122.879			
	1121.321	1122.879			
	1121.314	1122.683			
	1121.308	1122.503			
	1121.301	1122.365			
	1121.294	1122.268			
	1121.509	1122.212			
	1121.724	1122.198			
	1121.939	1122.225			
	1122.154	1122.293			
	1122.369	1122.402			
	1122.312	1122.553			
	1122.255	1122.745			
	1122.199	1122.960			
	1122.142	1123.142			
	1122.085	1123.283			
	1122.269	1123.381			
	1122.453	1123.438			
	1122.636	1123.452			
	1122.820	1123.424			
	1123.004	1123.354			

STRAIGHT

LVC = 200.00 m

$g = 1.084\%$

LVC = 180.00 m

$g = -0.981\%$

N.C.

THE BASIC DESIGN STUDY ON CONSTRUCTION OF EASTERN ARTERIAL ROAD IN MONGOLIA

JAPAN INTERNATIONAL COOPERATION AGENCY (JICA)

DEPARTMENT OF ROADS,

MINISTRY OF INFRASTRUCTURE,

THE GOVERNMENT OF MONGOLIA

PACIFIC CONSULTANTS INTERNATIONAL

JAPAN OVERSEAS CONSULTANTS

Scale

AS SHOWN

PLAN AND PROFILE

STA. 316+700 - STA. 317+400

(SECTION-6)

Sheet No.

C-23

29/41

Figure 2-2-3-73 Plan and Profile (Section VI Sta.316+700-317+400)