

Figure 2-2-3-59 Plan and Profile (Section VI Sta.306+900-Sta.307+600)

THE BASIC DESIGN STUDY ON CONSTRUCTION OF EASTERN ARTERIAL ROAD IN MONGOLIA

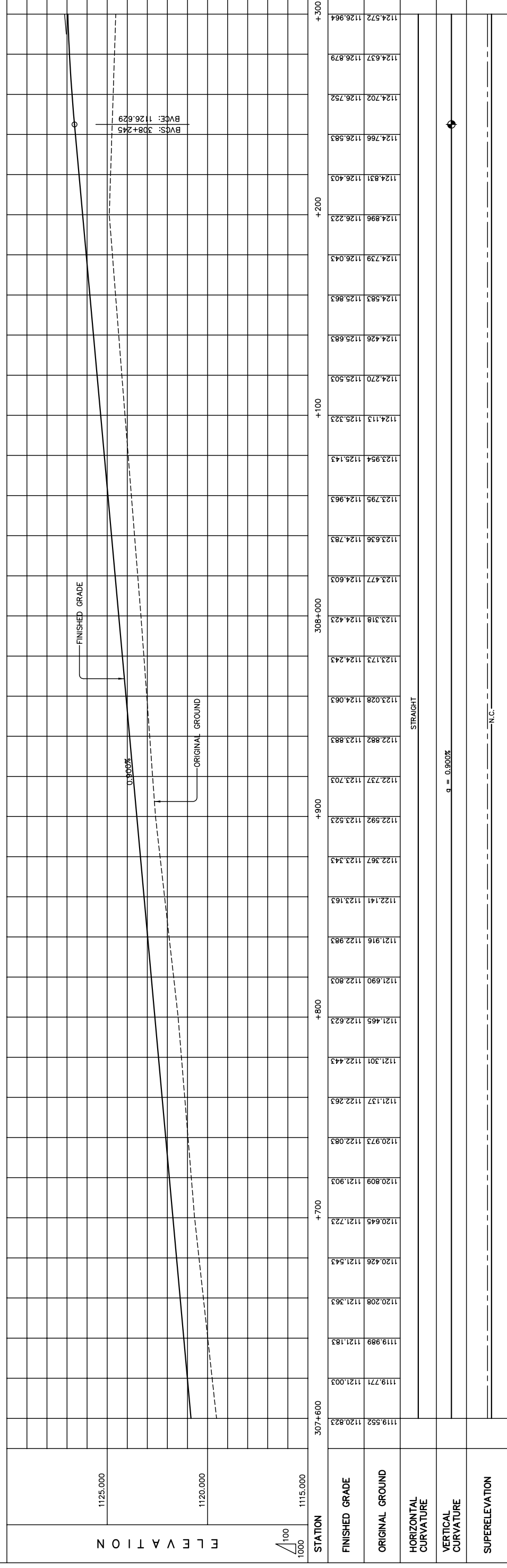
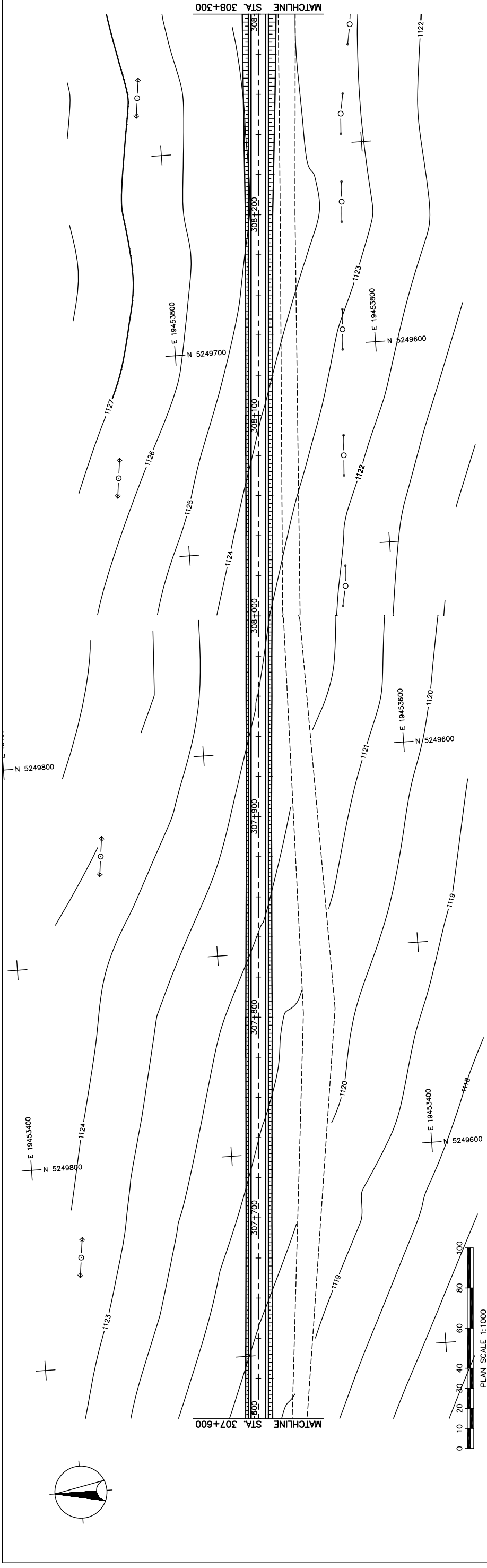
JAPAN INTERNATIONAL COOPERATION AGENCY (JICA)  
 DEPARTMENT OF ROADS,  
 MINISTRY OF INFRASTRUCTURE,  
 THE GOVERNMENT OF MONGOLIA

PACIFIC CONSULTANTS INTERNATIONAL  
 JAPAN OVERSEAS CONSULTANTS

Scale: AS SHOWN

Sheet No. C-9 / 7 (4)

PLAN AND PROFILE  
 STA. 306+900 - STA. 307+600  
 (SECTION-6)



THE BASIC DESIGN STUDY ON CONSTRUCTION OF EASTERN ARTERIAL ROAD IN MONGOLIA	
DEPARTMENT OF ROADS, MINISTRY OF INFRASTRUCTURE, THE GOVERNMENT OF MONGOLIA	
JAPAN INTERNATIONAL COOPERATION AGENCY (JICA) PACIFIC CONSULTANTS INTERNATIONAL JAPAN OVERSEAS CONSULTANTS	
PLAN AND PROFILE STA. 307+600 - STA. 308+300 (SECTION-6)	
Drawing title Scale Sheet No.	
AS SHOWN C-10 10/41	
FINISHED GRADE	1124.572 1126.964
ORIGINAL GROUND	1124.637 1126.879
HORIZONTAL CURVATURE	1124.702 1126.752
VERTICAL CURVATURE	1124.766 1126.583
SUPERELEVATION	1124.831 1126.403
	1124.896 1126.223
	1124.739 1126.043
	1124.583 1125.863
	1124.426 1125.683
	1124.270 1125.503
	1124.113 1125.323
	1123.954 1125.143
	1123.795 1124.963
	1123.636 1124.783
	1123.477 1124.603
	1123.318 1124.423
	1123.173 1124.243
	1123.028 1124.063
	1122.882 1123.883
	1122.737 1123.703
	1122.592 1123.523
	1122.467 1123.343
	1122.316 1123.163
	1122.166 1122.983
	1122.016 1122.803
	1121.865 1122.623
	1121.715 1122.443
	1121.565 1122.263
	1121.415 1122.083
	1121.265 1121.903
	1121.115 1121.723
	1120.965 1121.543
	1120.815 1121.363
	1120.665 1121.183
	1120.515 1121.003
	1120.365 1120.823

Figure 2-2-3-60 Plan and Profile (Section VI Sta.307+600-Sta.308+300)

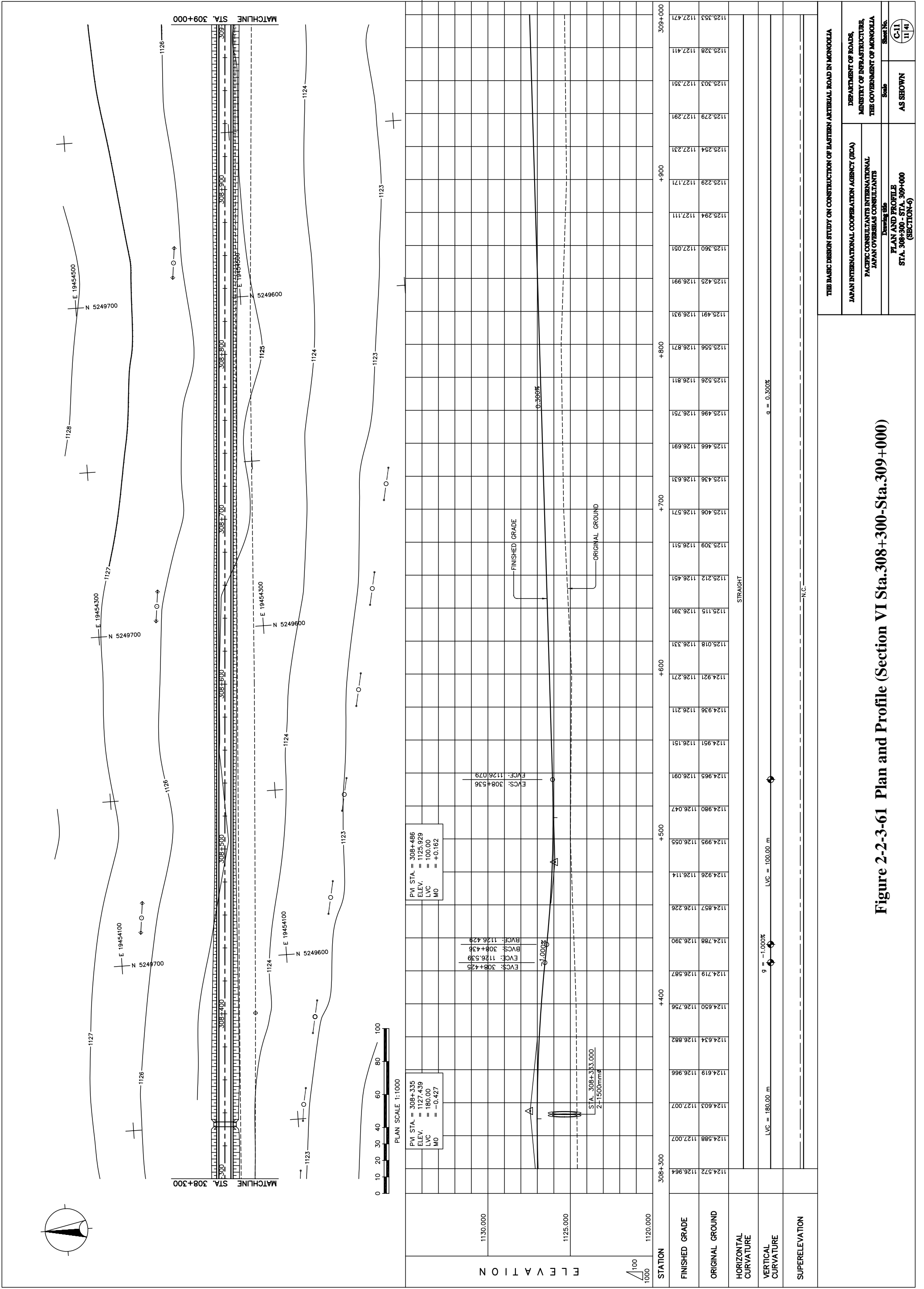


Figure 2-2-3-61 Plan and Profile (Section VI Sta.308+300-Sta.309+000)

THE BASIC DESIGN STUDY ON CONSTRUCTION OF EASTERN ARTERIAL ROAD IN MONGOLIA

JAPAN INTERNATIONAL COOPERATION AGENCY (JICA)

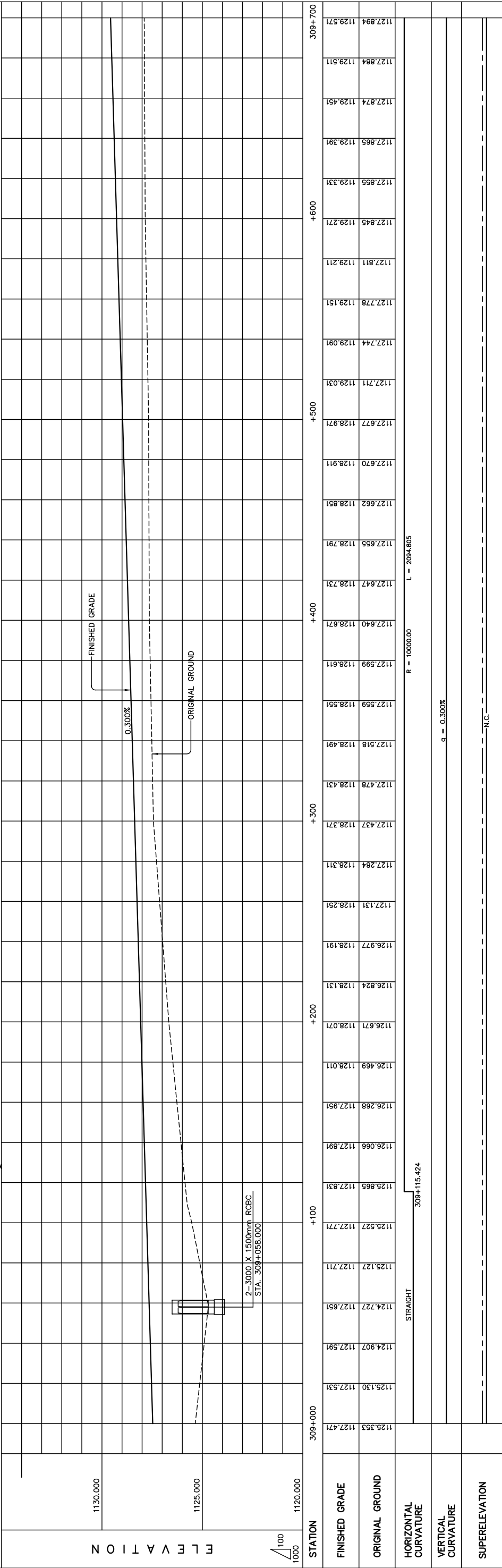
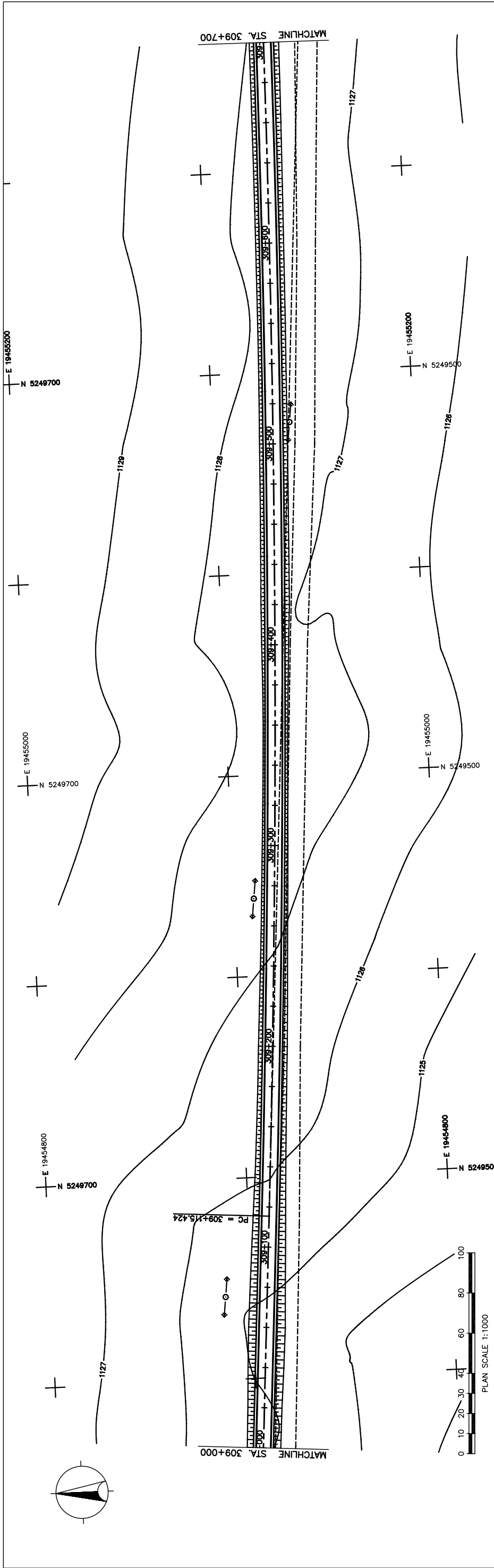
DEPARTMENT OF ROADS,  
MINISTRY OF INFRASTRUCTURE,  
THE GOVERNMENT OF MONGOLIA

PACIFIC CONSULTANTS INTERNATIONAL  
JAPAN OVERSEAS CONSULTANTS

Drawing title  
PLAN AND PROFILE  
STA. 308+300 - STA. 309+000  
(SECTION-6)

Scale  
AS SHOWN

Sheet No.  
C-11  
11/41



STATION	FINISHED GRADE	ORIGINAL GROUND	HORIZONTAL CURVATURE	VERTICAL CURVATURE	SUPERELEVATION
309+000	1125.553	1127.471			
	1125.130	1127.531			
	1124.907	1127.591			
	1124.727	1127.651			
	1125.127	1127.711			
	1125.527	1127.771			
	1125.965	1127.831			
	1126.066	1127.891			
	1126.268	1127.951			
	1126.469	1128.011			
	1126.671	1128.071			
	1126.824	1128.131			
	1126.977	1128.191			
	1127.131	1128.251			
	1127.284	1128.311			
	1127.437	1128.371			
	1127.478	1128.431			
	1127.518	1128.491			
	1127.559	1128.551			
	1127.599	1128.611			
	1127.640	1128.671			
	1127.647	1128.731			
	1127.655	1128.791			
	1127.662	1128.851			
	1127.670	1128.911			
	1127.677	1128.971			
	1127.711	1129.031			
	1127.744	1129.091			
	1127.778	1129.151			
	1127.811	1129.211			
	1127.845	1129.271			
	1127.856	1129.331			
	1127.874	1129.391			
	1127.884	1129.451			
	1127.894	1129.511			
	1127.894	1129.571			

THE BASIC DESIGN STUDY ON CONSTRUCTION OF EASTERN ARTERIAL ROAD IN MONGOLIA

JAPAN INTERNATIONAL COOPERATION AGENCY (JICA)

DEPARTMENT OF ROADS,  
MINISTRY OF INFRASTRUCTURE,  
THE GOVERNMENT OF MONGOLIA

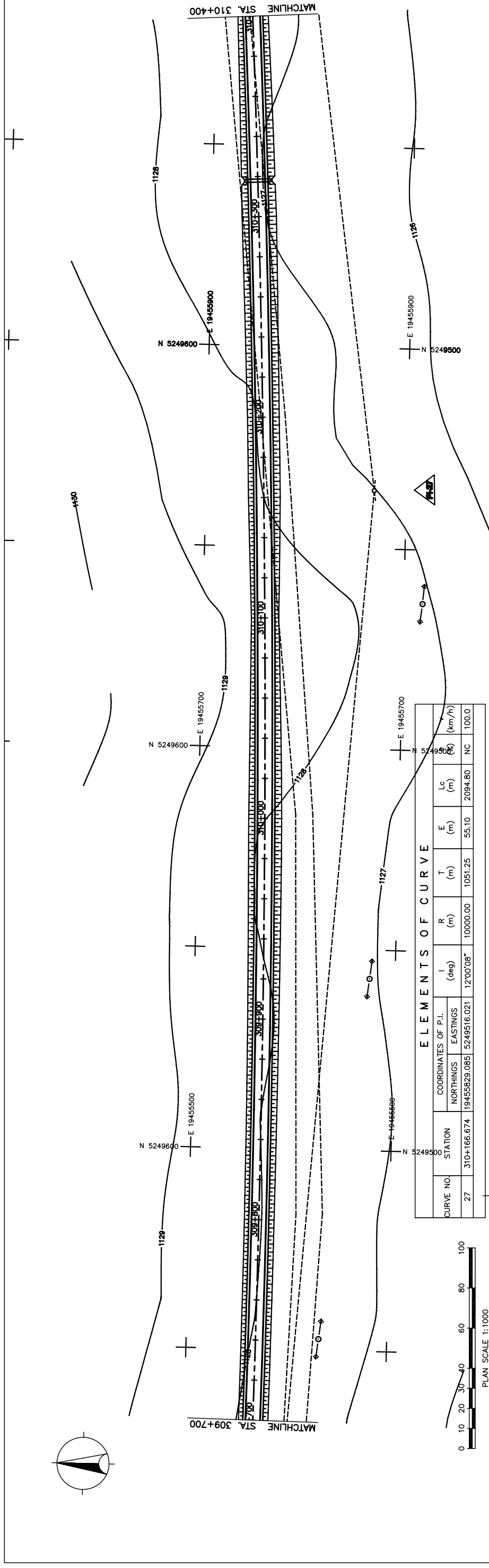
PACIFIC CONSULTANTS INTERNATIONAL  
JAPAN OVERSEAS CONSULTANTS

Scale: AS SHOWN

Sheet No. C-12  
12/41

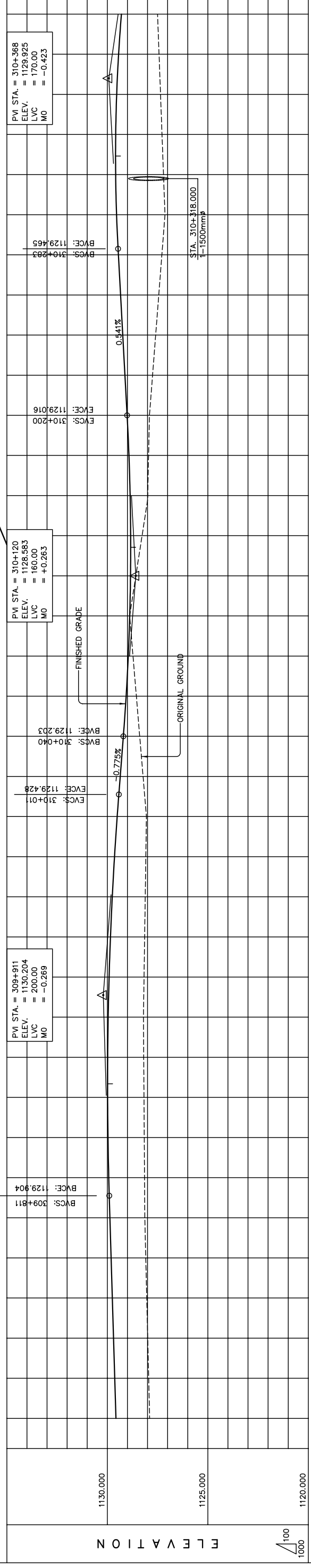
PLAN AND PROFILE  
STA. 309+000 - STA. 309+700  
(SECTION-6)

Figure 2-2-3-62 Plan and Profile (Section VI Sta.309+000-Sta.309+700)



**ELEMENTS OF CURVE**

CURVE NO.	STATION	COORDINATES OF P.I.		I (deg)	R (m)	T (m)	E (m)	Lc (m)	S (km/h)	NC	100.0
		NORTHINGS	EASTINGS								
27	310+166.674	19455829.085	5249516.021	12°00'08"	10000.00	1051.25	55.10	2094.80			



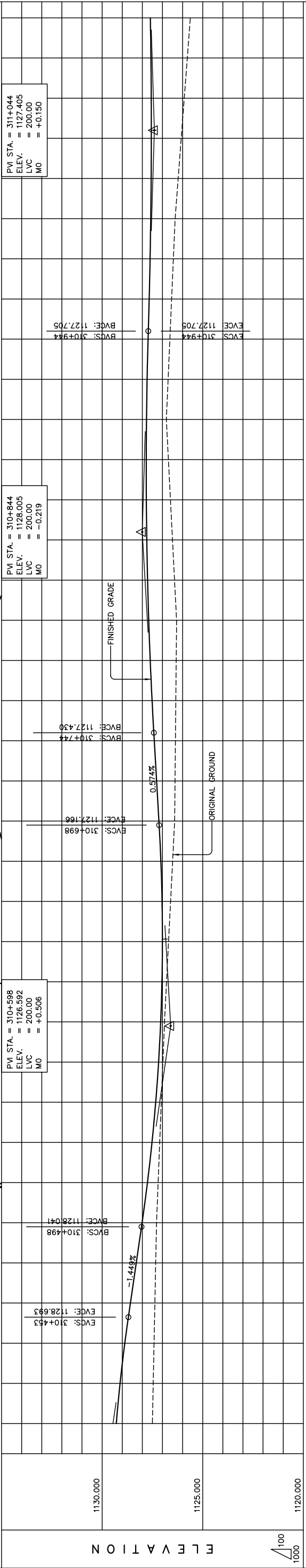
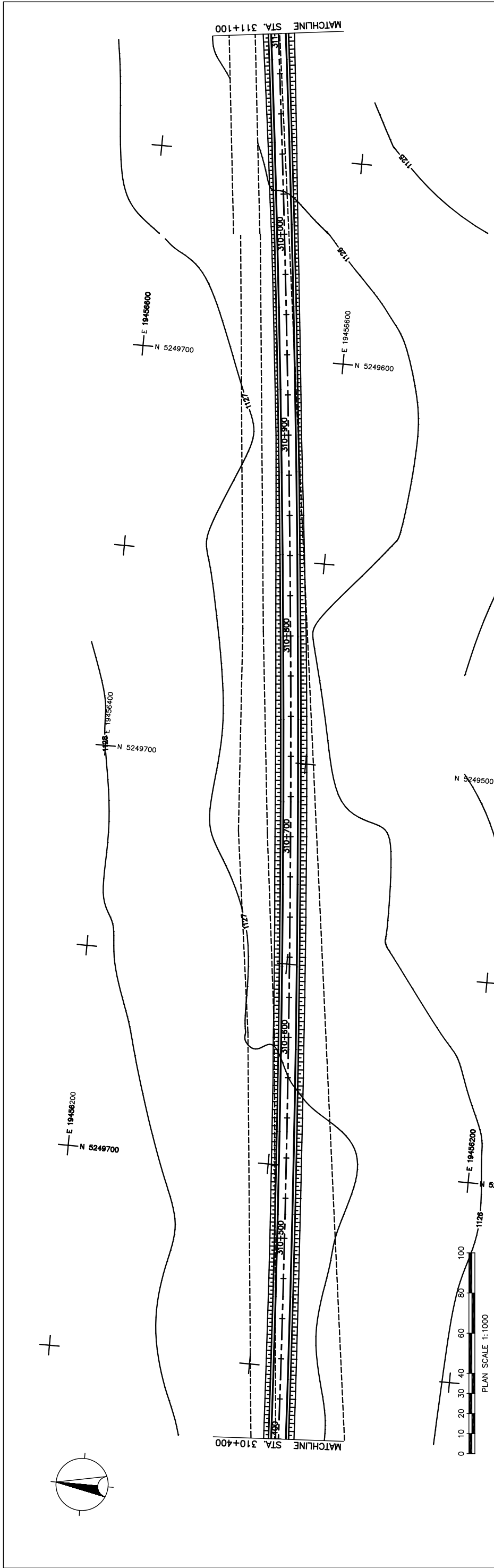
STATION	309+700	+800	+900	310+000	+100	+200	+300	+400
FINISHED GRADE	1127.894	1128.136	1128.173	1128.055	1128.890	1127.904	1127.132	1127.280
ORIGINAL GROUND	1127.942	1128.088	1128.144	1128.085	1128.723	1127.948	1127.206	1127.535
HORIZONTAL CURVATURE	1129.571	1129.871	1129.911	1129.510	1129.065	1129.016	1129.540	1129.585
VERTICAL CURVATURE	1129.631	1129.968	1129.958	1129.643	1129.358	1129.124	1129.233	1129.439
SUPERELEVATION	1129.571	1129.928	1129.968	1129.968	1129.968	1129.968	1129.968	1129.968

**Figure 2-2-3-63 Plan and Profile (Section VI Sta.309+700-Sta.310+400)**

Scale: 1:1000 (Plan), 1:100 (Profile)

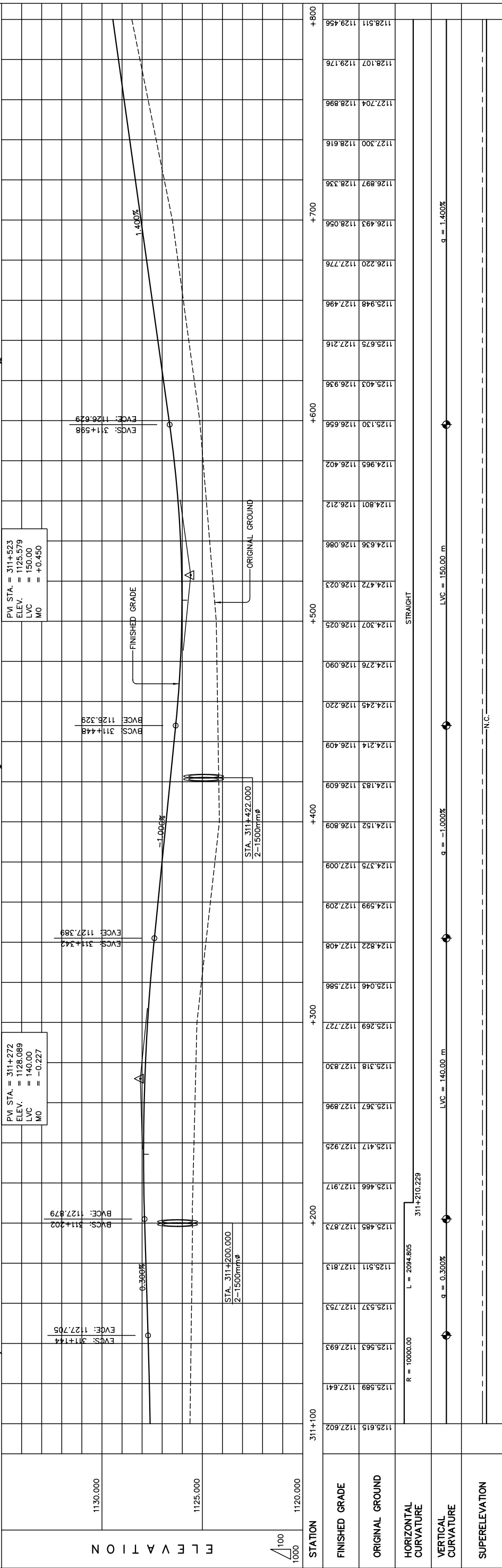
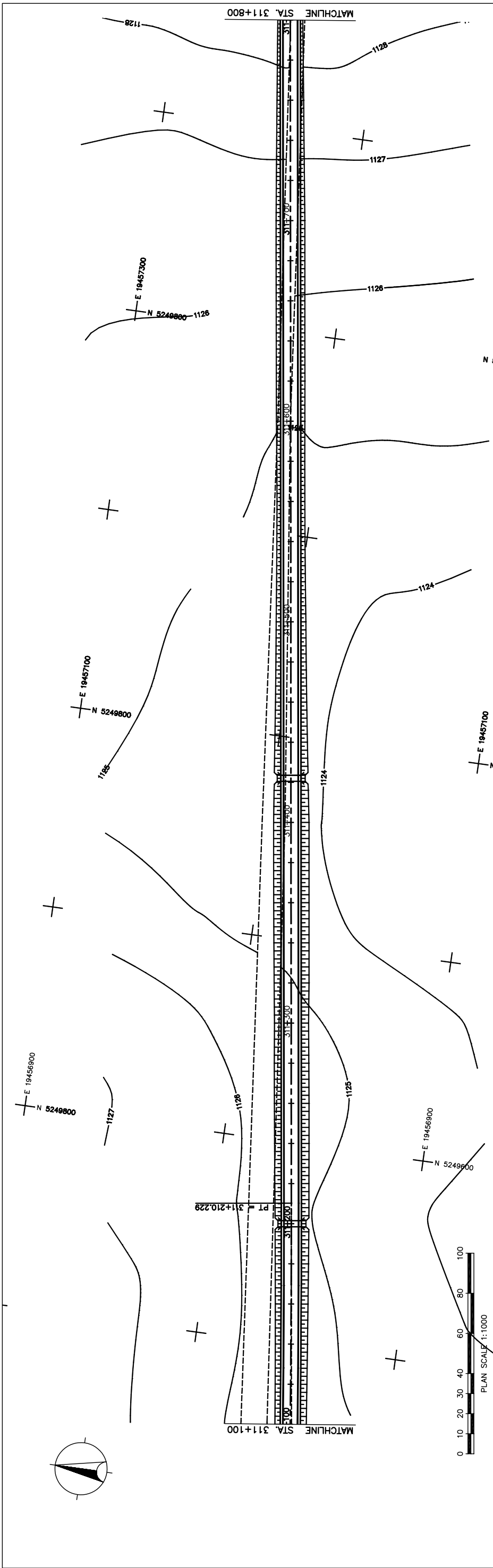
L = 1000.00, R = 2094.805, LVC = 200.00 m, g = -0.775%, LVC = 150.00 m, g = 0.541%, LVC = 170.00 m

THE BASIC DESIGN STUDY ON CONSTRUCTION OF EASTERN ARTERIAL ROAD IN MONGOLIA	
JAPAN INTERNATIONAL COOPERATION AGENCY (JICA)	DEPARTMENT OF ROADS,
PACIFIC CONSULTANTS INTERNATIONAL	MINISTRY OF INFRASTRUCTURE,
JAPAN OVERSEAS CONSULTANTS	THE GOVERNMENT OF MONGOLIA
Drawing title	Scale
Sheet No.	AS SHOWN
PLAN AND PROFILE	C-13
STA. 309+700 - STA. 310+400	13/41
(SECTION-6)	



STATION	310+400	+500	+600	+700	+800	+900	311+000	+100
FINISHED GRADE	1127.501	1129.297	1127.460	1129.108	1127.419	1128.872	1127.378	1128.592
ORIGINAL GROUND	1127.337	1128.302	1127.296	1128.012	1127.217	1127.747	1127.138	1127.522
HORIZONTAL CURVATURE								
VERTICAL CURVATURE								
SUPERELEVATION								

THE BASIC DESIGN STUDY ON CONSTRUCTION OF EASTERN ARTERIAL ROAD IN MONGOLIA  
 JAPAN INTERNATIONAL COOPERATION AGENCY (JICA)  
 DEPARTMENT OF ROADS,  
 MINISTRY OF INFRASTRUCTURE,  
 THE GOVERNMENT OF MONGOLIA  
 PACIFIC CONSULTANTS INTERNATIONAL  
 JAPAN OVERSEAS CONSULTANTS  
 STA. 310+400 - STA. 311+100  
 (SECTION-6)  
 AS SHOWN  
 Scale  
 Sheet No. C-14 (14/4)



STATION	FINISHED GRADE	ORIGINAL GROUND	HORIZONTAL CURVATURE	VERTICAL CURVATURE	SUPERELEVATION
311+100	1125.615	1127.602			
	1125.589	1127.641			
	1125.563	1127.693			
	1125.537	1127.753			
	1125.511	1127.813			
	1125.485	1127.873			
	1125.466	1127.917			
	1125.417	1127.925			
	1125.367	1127.996			
	1125.318	1127.830			
	1125.269	1127.727			
	1125.246	1127.586			
	1124.822	1127.408			
	1124.599	1127.209			
	1124.375	1127.009			
	1124.152	1126.809			
	1124.183	1126.609			
	1124.214	1126.409			
	1124.245	1126.220			
	1124.276	1126.090			
	1124.307	1126.025			
	1124.472	1126.023			
	1124.636	1126.086			
	1124.801	1126.212			
	1124.965	1126.402			
	1125.130	1126.656			
	1125.403	1126.936			
	1125.675	1127.216			
	1125.948	1127.496			
	1126.220	1127.776			
	1126.493	1128.056			
	1126.897	1128.336			
	1127.300	1128.616			
	1127.704	1128.896			
	1128.107	1129.176			
	1128.511	1129.456			

Figure 2-2-3-65 Plan and Profile (Section VI Sta.311+100-Sta.311+800)

THE BASIC DESIGN STUDY ON CONSTRUCTION OF EASTERN ARTERIAL ROAD IN MONGOLIA

JAPAN INTERNATIONAL COOPERATION AGENCY (JICA)

DEPARTMENT OF ROADS,  
MINISTRY OF INFRASTRUCTURE,  
THE GOVERNMENT OF MONGOLIA

PACIFIC CONSULTANTS INTERNATIONAL  
JAPAN OVERSEAS CONSULTANTS

Scale: AS SHOWN

PLAN AND PROFILE  
STA. 311+100 - STA. 311+800  
(SECTION-6)

Sheet No. C-15  
15/41



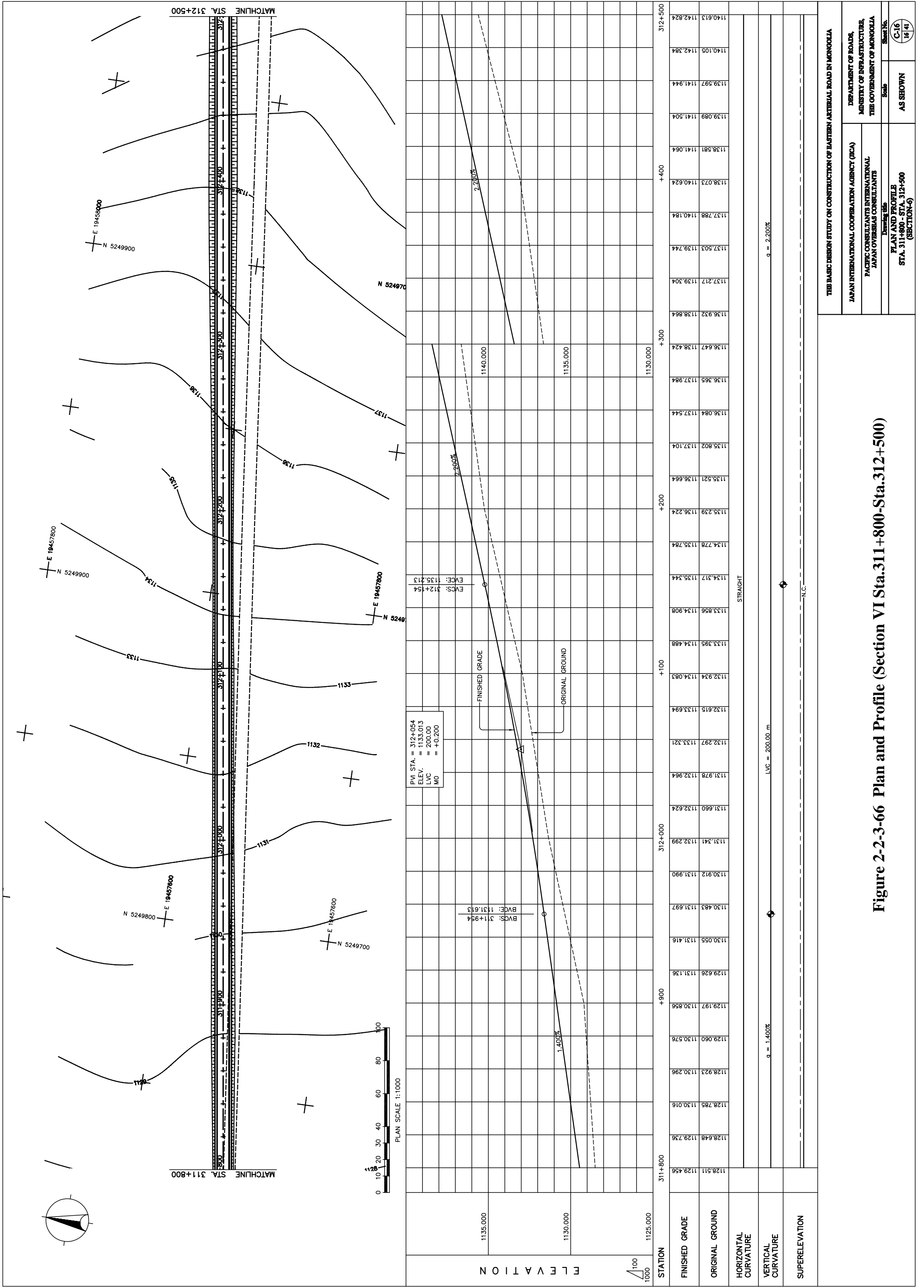


Figure 2-2-3-66 Plan and Profile (Section VI Sta.311+800-312+500)