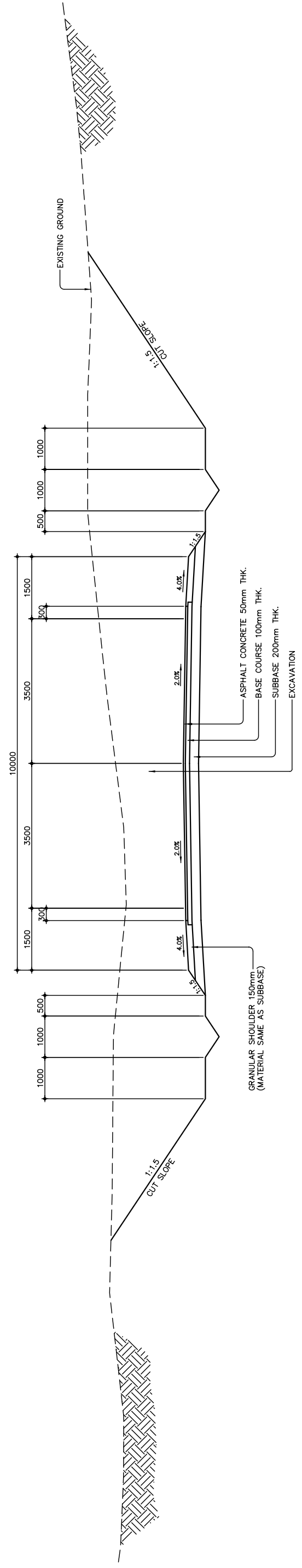


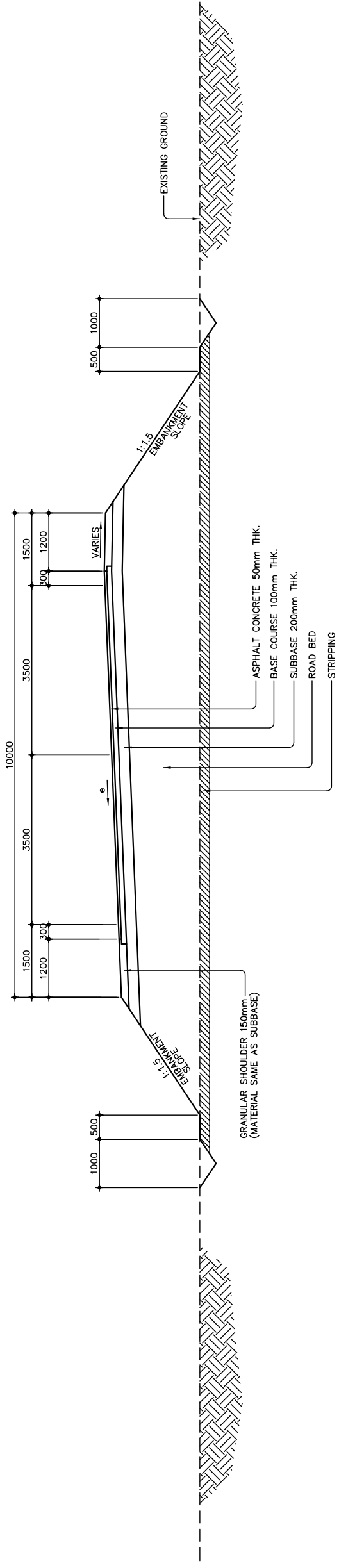
2 SECTION FILL
SCALE 1:50



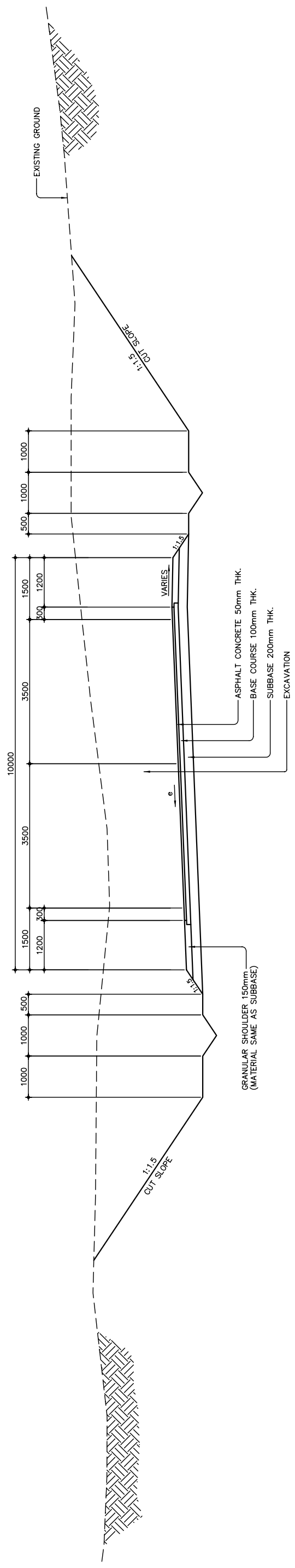
1 SECTION IN CUT
SCALE 1:50

THE BASIC DESIGN STUDY ON CONSTRUCTION OF EASTERN ARTERIAL ROAD IN MONGOLIA	
JAPAN INTERNATIONAL COOPERATION AGENCY (JICA)	DEPARTMENT OF ROADS, MINISTRY OF INFRASTRUCTURE, THE GOVERNMENT OF MONGOLIA
PACIFIC CONSULTANTS INTERNATIONAL JAPAN OVERSEAS CONSULTANTS	Scale
Drawing title	Sheet No.
TYPICAL ROADWAY SECTION (1) (SECTION-6)	AS SHOWN
	B-3 3/4

Figure 2-2-3-49 Typical Roadway Section(1) (Section VI)



2 SUPERELEVATED SECTION IN FILL
 B-4 SCALE 1:50



1 SUPERELEVATED SECTION IN CUT
 B-4 SCALE 1:50

THE BASIC DESIGN STUDY ON CONSTRUCTION OF EASTERN ARTERIAL ROAD IN MONGOLIA	
JAPAN INTERNATIONAL COOPERATION AGENCY (JICA)	DEPARTMENT OF ROADS, MINISTRY OF INFRASTRUCTURE, THE GOVERNMENT OF MONGOLIA
PACIFIC CONSULTANTS INTERNATIONAL JAPAN OVERSEAS CONSULTANTS	Scale
Drawing title	Sheet No.
TYPICAL ROADWAY SECTION (2) (SECTION-6)	AS SHOWN
	B-4 4/4

Figure 2-2-3-50 Typical Roadway Section(2) (Section VI)

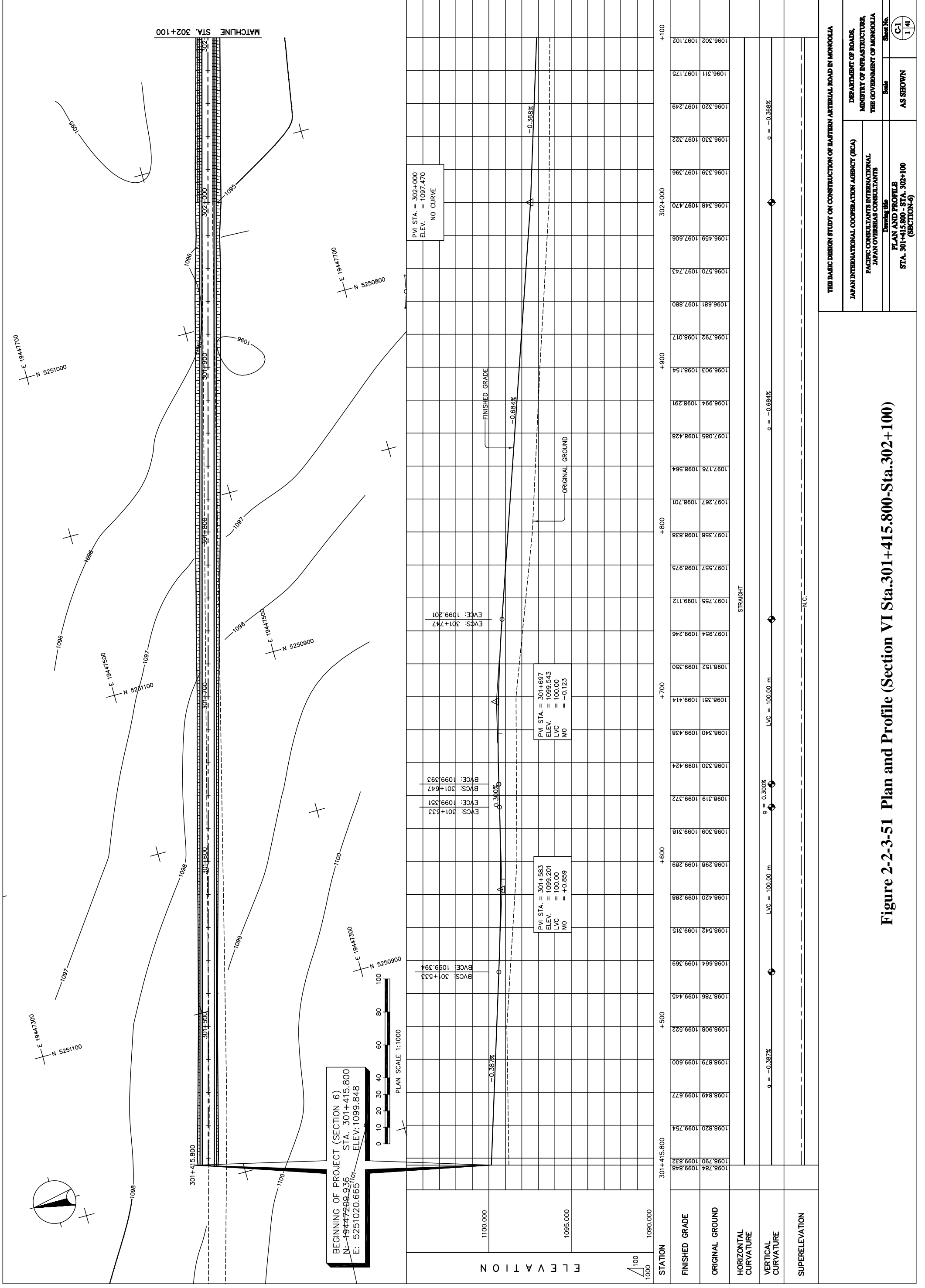
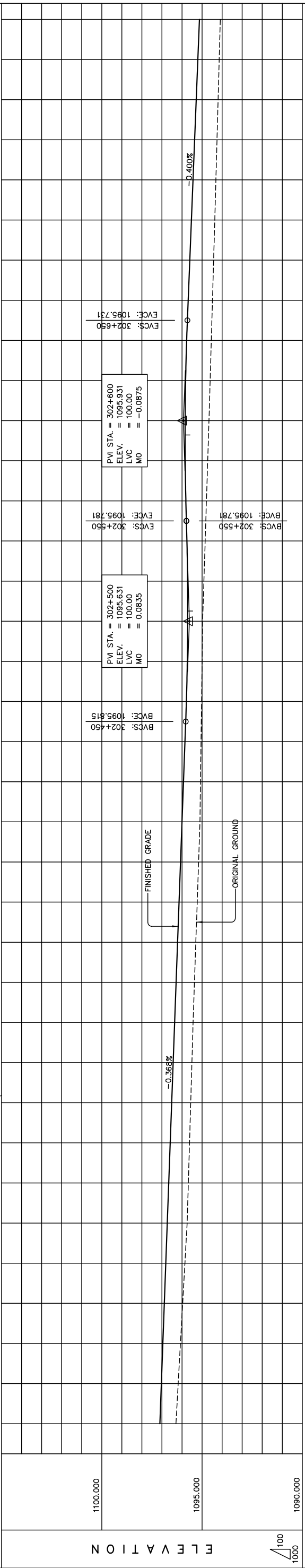
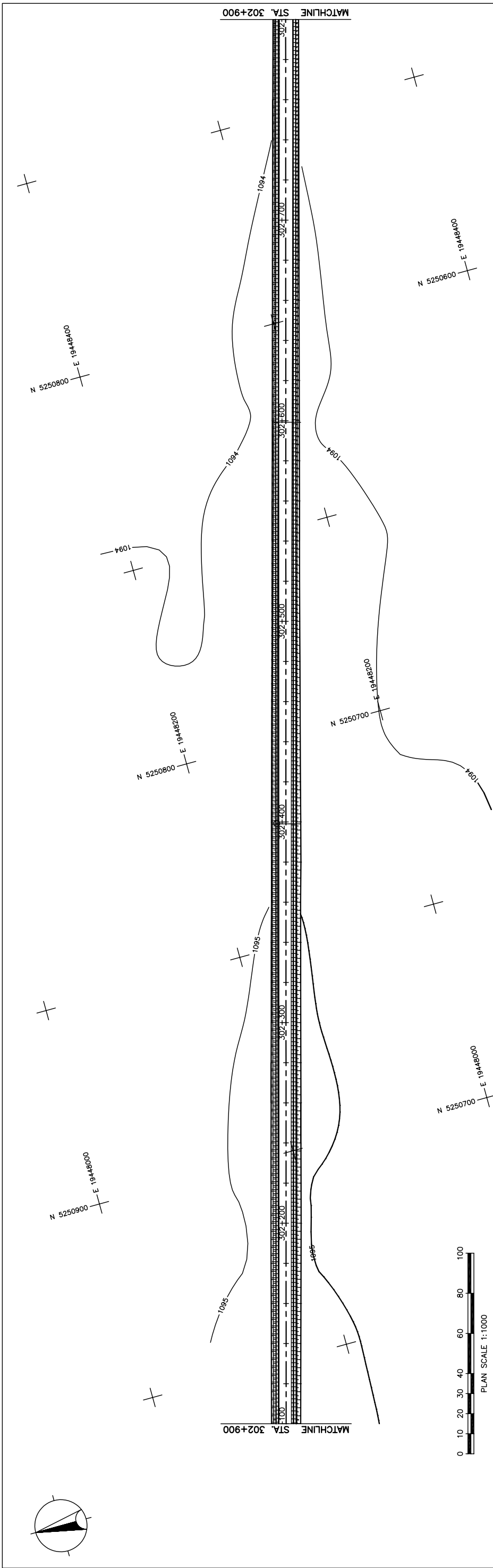


Figure 2-2-3-51 Plan and Profile (Section VI Sta.301+415.800-Sta.302+100)



STATION	FINISHED GRADE	ORIGINAL GROUND	HORIZONTAL CURVATURE	VERTICAL CURVATURE	SUPERELEVATION
302+102	1096.302	1097.028			
302+104	1096.190	1096.955			
302+106	1095.967	1096.881			
302+108	1095.855	1096.808			
302+110	1095.743	1096.734			
302+112	1095.684	1096.661			
302+114	1095.625	1096.587			
302+116	1095.565	1096.513			
302+118	1095.506	1096.440			
302+120	1095.447	1096.366			
302+122	1095.379	1096.293			
302+124	1095.310	1096.219			
302+126	1095.242	1096.146			
302+128	1095.173	1096.072			
302+130	1095.105	1095.999			
302+132	1095.078	1095.925			
302+134	1095.051	1095.852			
302+136	1095.025	1095.781			
302+138	1094.998	1095.735			
302+140	1094.971	1095.714			
302+142	1094.908	1095.721			
302+144	1094.845	1095.754			
302+146	1094.781	1095.807			
302+148	1094.718	1095.839			
302+150	1094.655	1095.843			
302+152	1094.597	1095.819			
302+154	1094.539	1095.767			
302+156	1094.481	1095.691			
302+158	1094.423	1095.611			
302+160	1094.365	1095.531			
302+162	1094.310	1095.451			
302+164	1094.255	1095.371			
302+166	1094.200	1095.291			
302+168	1094.145	1095.211			
302+170	1094.090	1095.131			

STRAIGHT

Vertical Curve Lengths: LVC = 100.00 m

Grades: g = -0.366%, g = -0.400%

THE BASIC DESIGN STUDY ON CONSTRUCTION OF EASTERN ARTERIAL ROAD IN MONGOLIA

JAPAN INTERNATIONAL COOPERATION AGENCY (JICA)
 DEPARTMENT OF ROADS,
 MINISTRY OF INFRASTRUCTURE,
 THE GOVERNMENT OF MONGOLIA

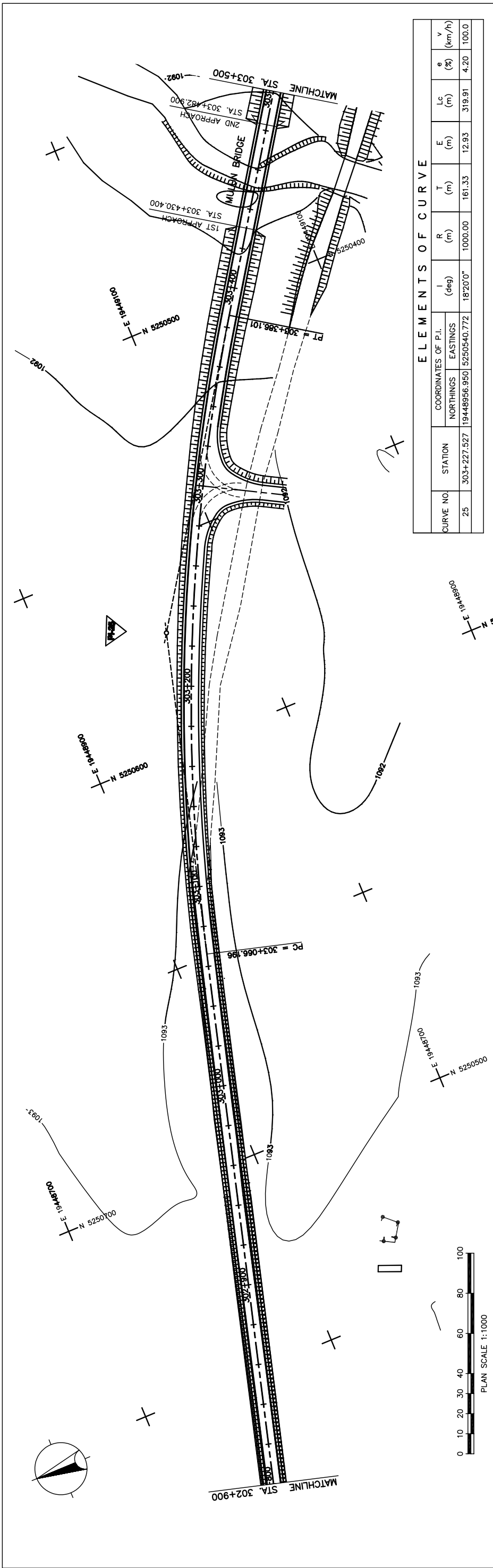
PACIFIC CONSULTANTS INTERNATIONAL
 JAPAN OVERSEAS CONSULTANTS

Scale AS SHOWN

Drawing title
 PLAN AND PROFILE
 STA. 302+100 - STA. 302+800
 (SECTION-6)

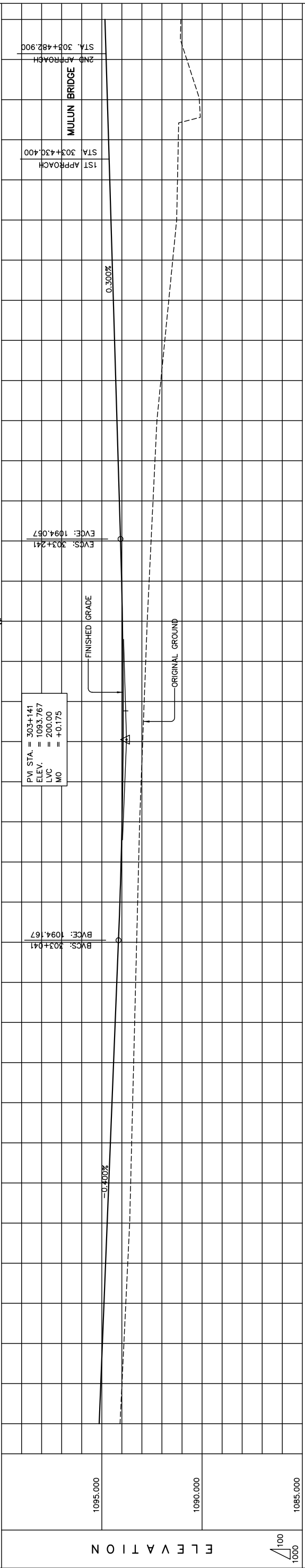
Sheet No. C-2
 2 / 41

Figure 2-2-3-52 Plan and Profile (Section VI Sta.302+100-302+800)



ELEMENTS OF CURVE

CURVE NO.	STATION	COORDINATES OF P.I.		I (deg)	R (m)	T (m)	E (m)	Lc (m)	e (%)	V (km/h)
		NORTHINGS	EASTINGS							
25	303+227.527	19448956.950	5250540.772	18°20'0"	1000.00	161.33	12.93	319.91	4.20	100.0



STATION	FINISHED GRADE	ORIGINAL GROUND	HORIZONTAL CURVATURE	VERTICAL CURVATURE	SUPERELEVATION
1085.000					
1090.000					
1095.000					
302+800	1093.994	1095.051			
	1093.898	1094.971			
	1093.802	1094.891			
	1093.706	1094.811			
	1093.610	1094.731			
	1093.560	1094.651			
	1093.510	1094.571			
	1093.461	1094.491			
	1093.411	1094.411			
	1093.361	1094.331			
303+000	1093.311	1094.251			
	1093.262	1094.171			
	1093.212	1094.097			
	1093.162	1094.038			
	1093.112	1093.992			
	1093.037	1093.960			
	1092.961	1093.942			
	1092.886	1093.939			
	1092.810	1093.949			
	1092.735	1093.973			
	1092.638	1094.012			
	1092.542	1094.064			
	1092.445	1094.124			
	1092.348	1094.184			
	1092.251	1094.244			
	1092.054	1094.304			
	1091.857	1094.364			
	1091.660	1094.424			
	1091.463	1094.484			
	1091.266	1094.544			
	1091.225	1094.604			
	1091.183	1094.664			
	1090.138	1094.724			
	1090.761	1094.784			
	1091.059	1094.844			
303+500					

PLAN AND PROFILE
STA. 302+800 - STA. 303+500
(SECTION-6)

Drawing title

Scale

Sheet No. C-3
3 / 41

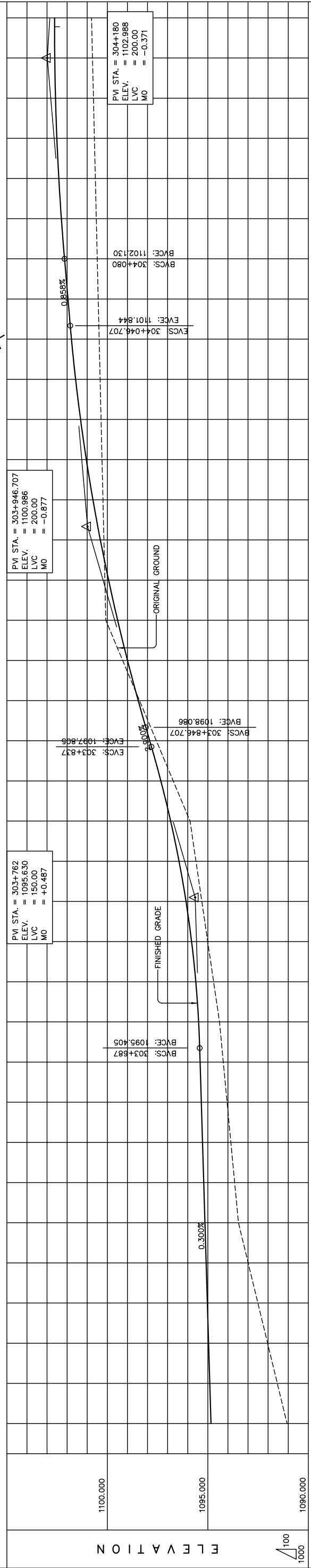
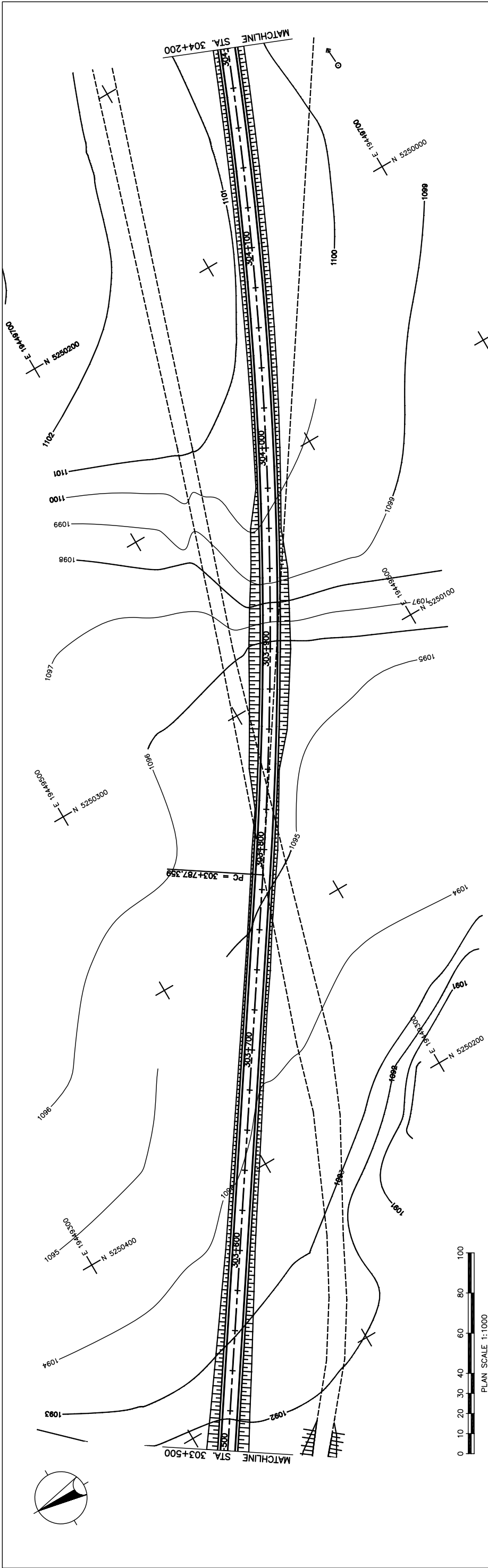
AS SHOWN

DEPARTMENT OF ROADS,
MINISTRY OF INFRASTRUCTURE,
THE GOVERNMENT OF MONGOLIA

JAPAN INTERNATIONAL COOPERATION AGENCY (JICA)
PACIFIC CONSULTANTS INTERNATIONAL
JAPAN OVERSEAS CONSULTANTS

THE BASIC DESIGN STUDY ON CONSTRUCTION OF EASTERN ARTERIAL ROAD IN MONGOLIA

Figure 2-2-3-53 Plan and Profile (Section VI Sta.302+800-Sta.303+500)



STATION	FINISHED GRADE	ORIGINAL GROUND	HORIZONTAL CURVATURE	VERTICAL CURVATURE	SUPERELEVATION
303+500	1091.543	1094.904			
	1092.026	1094.964			
	1092.509	1095.024			
	1092.993	1095.084			
	1093.476	1095.144			
	1093.959	1095.204			
	1094.442	1095.264			
	1094.927	1095.324			
	1095.410	1095.384			
	1095.894	1096.434			
	1096.377	1096.494			
	1096.860	1096.554			
	1097.343	1096.614			
	1097.826	1096.674			
	1098.309	1096.734			
	1098.792	1096.794			
	1099.275	1096.854			
	1099.758	1096.914			
	1100.241	1096.974			
	1100.724	1097.034			
	1101.207	1097.094			
	1101.690	1097.154			
	1102.173	1097.214			
	1102.656	1097.274			
	1103.139	1097.334			
	1103.622	1097.394			
	1104.105	1097.454			
	1104.588	1097.514			
	1105.071	1097.574			
	1105.554	1097.634			
	1106.037	1097.694			
	1106.520	1097.754			
	1107.003	1097.814			
	1107.486	1097.874			
	1107.969	1097.934			
	1108.452	1097.994			
	1108.935	1098.054			
	1109.418	1098.114			
	1109.901	1098.174			
	1110.384	1098.234			
	1110.867	1098.294			
	1111.350	1098.354			
	1111.833	1098.414			
	1112.316	1098.474			
	1112.799	1098.534			
	1113.282	1098.594			
	1113.765	1098.654			
	1114.248	1098.714			
	1114.731	1098.774			
	1115.214	1098.834			
	1115.697	1098.894			
	1116.180	1098.954			
	1116.663	1099.014			
	1117.146	1099.074			
	1117.629	1099.134			
	1118.112	1099.194			
	1118.595	1099.254			
	1119.078	1099.314			
	1119.561	1099.374			
	1120.044	1099.434			
	1120.527	1099.494			
	1121.010	1099.554			
	1121.493	1099.614			
	1121.976	1099.674			
	1122.459	1099.734			
	1122.942	1099.794			
	1123.425	1099.854			
	1123.908	1099.914			
	1124.391	1099.974			
	1124.874	1100.034			
	1125.357	1100.094			
	1125.840	1100.154			
	1126.323	1100.214			
	1126.806	1100.274			
	1127.289	1100.334			
	1127.772	1100.394			
	1128.255	1100.454			
	1128.738	1100.514			
	1129.221	1100.574			
	1129.704	1100.634			
	1130.187	1100.694			
	1130.670	1100.754			
	1131.153	1100.814			
	1131.636	1100.874			
	1132.119	1100.934			
	1132.602	1100.994			
	1133.085	1101.054			
	1133.568	1101.114			
	1134.051	1101.174			
	1134.534	1101.234			
	1135.017	1101.294			
	1135.500	1101.354			
	1135.983	1101.414			
	1136.466	1101.474			
	1136.949	1101.534			
	1137.432	1101.594			
	1137.915	1101.654			
	1138.398	1101.714			
	1138.881	1101.774			
	1139.364	1101.834			
	1139.847	1101.894			
	1140.330	1101.954			
	1140.813	1102.014			
	1141.296	1102.074			
	1141.779	1102.134			
	1142.262	1102.194			
	1142.745	1102.254			
	1143.228	1102.314			
	1143.711	1102.374			
	1144.194	1102.434			
	1144.677	1102.494			
	1145.160	1102.554			
	1145.643	1102.614			
	1146.126	1102.674			
	1146.609	1102.734			
	1147.092	1102.794			
	1147.575	1102.854			
	1148.058	1102.914			
	1148.541	1102.974			
	1149.024	1103.034			
	1149.507	1103.094			
	1150.000	1103.154			

THE BASIC DESIGN STUDY ON CONSTRUCTION OF EASTERN ARTERIAL ROAD IN MONGOLIA

JAPAN INTERNATIONAL COOPERATION AGENCY (JICA)
 PACIFIC CONSULTANTS INTERNATIONAL
 JAPAN OVERSEAS CONSULTANTS

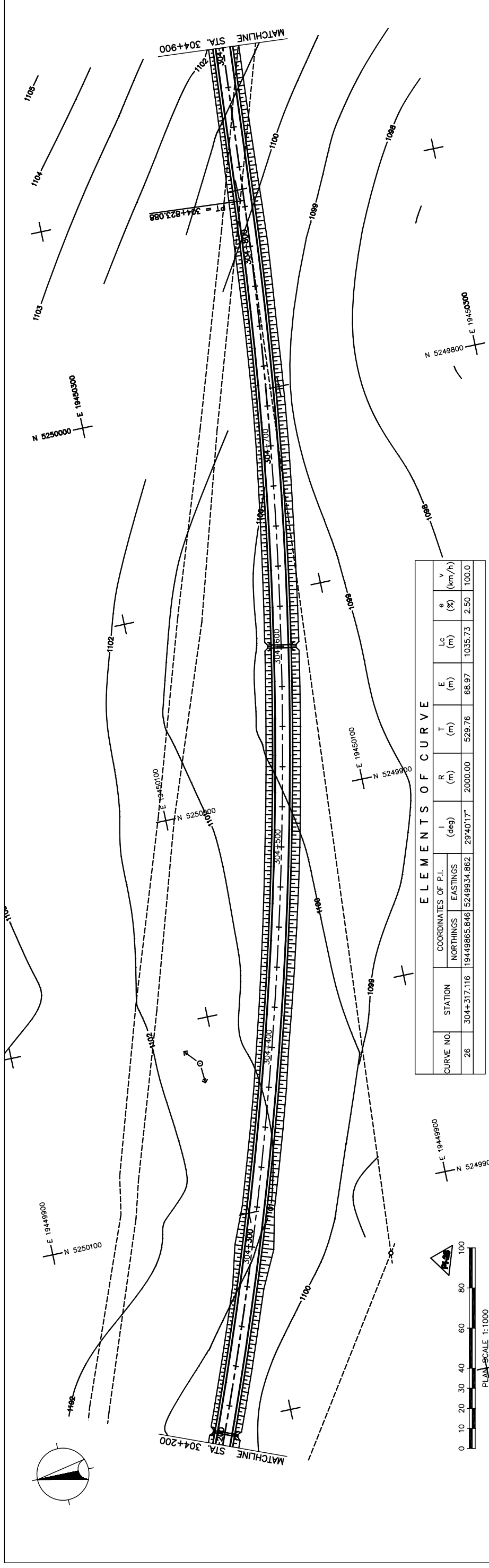
DEPARTMENT OF ROADS,
 MINISTRY OF INFRASTRUCTURE,
 THE GOVERNMENT OF MONGOLIA

Drawing title
PLAN AND PROFILE
 STA. 303+500 - STA. 304+200
 (SECTION-6)

Scale AS SHOWN

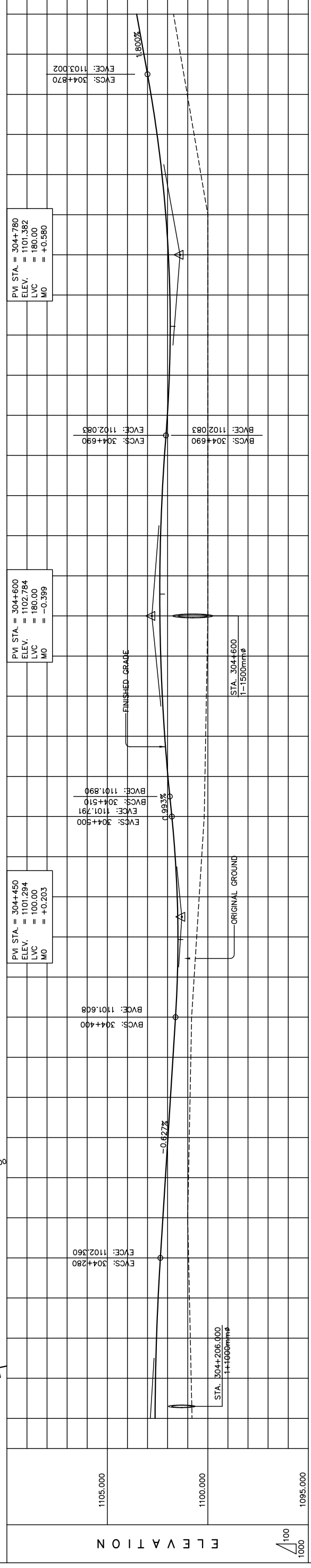
Sheet No. C-4
 4/41

Figure 2-2-3-54 Plan and Profile (Section VI Sta.303+500-Sta.304+200)



ELEMENTS OF CURVE

CURVE NO.	STATION	COORDINATES OF P.I.		I (deg)	R (m)	T (m)	E (m)	Lc (m)	e (%)	v (km/h)
		NORTHINGS	EASTINGS							
26	304+317.116	19449865.846	5249934.862	29°40'17"	2000.00	529.76	68.97	1035.73	2.50	100.0



STATION	FINISHED GRADE	ORIGINAL GROUND	HORIZONTAL CURVATURE	VERTICAL CURVATURE	SUPERELEVATION
304+200	1100.785	1102.625			
304+210	1100.957	1102.360			
304+220	1100.914	1102.471			
304+230	1101.000	1102.235			
304+240	1100.961	1102.110			
304+250	1100.922	1101.984			
304+260	1100.884	1101.859			
304+270	1100.845	1101.733			
304+280	1100.806	1101.608			
304+290	1100.768	1101.486			
304+300	1100.730	1101.363			
304+310	1100.692	1101.240			
304+320	1100.654	1101.117			
304+330	1100.616	1100.994			
304+340	1100.578	1100.871			
304+350	1100.540	1100.748			
304+360	1100.502	1100.625			
304+370	1100.464	1100.502			
304+380	1100.426	1100.379			
304+390	1100.388	1100.256			
304+400	1100.350	1100.133			
304+410	1100.312	1100.010			
304+420	1100.274	1099.887			
304+430	1100.236	1099.764			
304+440	1100.198	1099.641			
304+450	1100.160	1099.518			
304+460	1100.122	1099.395			
304+470	1100.084	1099.272			
304+480	1100.046	1099.149			
304+490	1100.008	1099.026			
304+500	1100.000	1101.914			
304+510	1100.000	1101.873			
304+520	1100.000	1101.832			
304+530	1100.000	1101.791			
304+540	1100.000	1101.750			
304+550	1100.000	1101.709			
304+560	1100.000	1101.668			
304+570	1100.000	1101.627			
304+580	1100.000	1101.586			
304+590	1100.000	1101.545			
304+600	1100.000	1101.504			
304+610	1100.000	1101.463			
304+620	1100.000	1101.422			
304+630	1100.000	1101.381			
304+640	1100.000	1101.340			
304+650	1100.000	1101.299			
304+660	1100.000	1101.258			
304+670	1100.000	1101.217			
304+680	1100.000	1101.176			
304+690	1100.000	1101.135			
304+700	1100.000	1101.094			
304+710	1100.000	1101.053			
304+720	1100.000	1101.012			
304+730	1100.000	1100.971			
304+740	1100.000	1100.930			
304+750	1100.000	1100.889			
304+760	1100.000	1100.848			
304+770	1100.000	1100.807			
304+780	1100.000	1100.766			
304+790	1100.000	1100.725			
304+800	1100.000	1100.684			
304+810	1100.000	1100.643			
304+820	1100.000	1100.602			
304+830	1100.000	1100.561			
304+840	1100.000	1100.520			
304+850	1100.000	1100.479			
304+860	1100.000	1100.438			
304+870	1100.000	1100.397			
304+880	1100.000	1100.356			
304+890	1100.000	1100.315			
304+900	1100.000	1100.274			

THE BASIC DESIGN STUDY ON CONSTRUCTION OF EASTERN ARTERIAL ROAD IN MONGOLIA

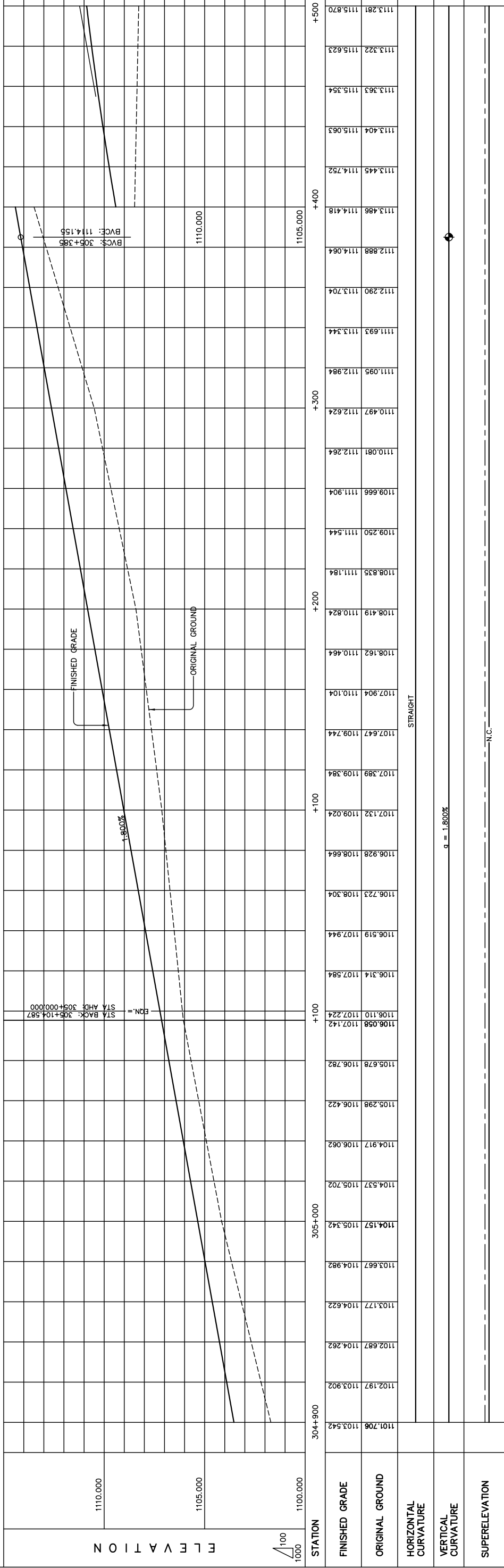
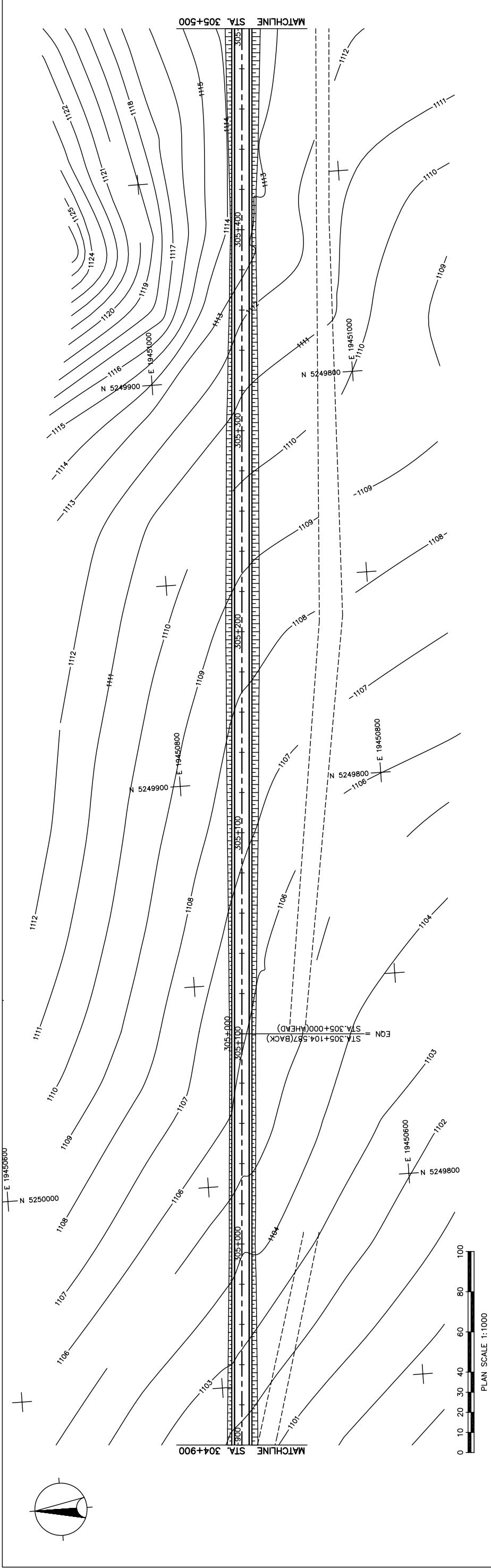
JAPAN INTERNATIONAL COOPERATION AGENCY (JICA)
 DEPARTMENT OF ROADS,
 MINISTRY OF INFRASTRUCTURE,
 THE GOVERNMENT OF MONGOLIA

PACIFIC CONSULTANTS INTERNATIONAL
 JAPAN OVERSEAS CONSULTANTS

Drawing title
PLAN AND PROFILE
 STA. 304+200 - STA. 304+900
 (SECTION-6)

Scale
 AS SHOWN

Sheet No.
 C-5
 3 / 41



STATION	ELEVATION		FINISHED GRADE	ORIGINAL GROUND	HORIZONTAL CURVATURE	VERTICAL CURVATURE	SUPERELEVATION
	1110.000	1105.000					
304+900	1101.706	1103.542					
	1102.197	1103.902					
	1102.687	1104.262					
	1103.177	1104.622					
	1103.667	1104.982					
	1104.157	1105.342					
	1104.537	1105.702					
	1104.917	1106.062					
	1105.298	1106.422					
	1105.678	1106.782					
	1106.058	1107.142					
	1106.110	1107.224					
	1106.314	1107.584					
	1106.519	1107.944					
	1106.723	1108.304					
	1106.928	1108.664					
	1107.132	1109.024					
	1107.389	1109.384					
	1107.647	1109.744					
	1107.904	1110.104					
	1108.162	1110.464					
	1108.419	1110.824					
	1108.635	1111.184					
	1108.835	1111.544					
	1109.250	1111.544					
	1109.666	1111.904					
	1110.081	1112.264					
	1110.497	1112.624					
	1110.905	1112.984					
	1111.693	1113.344					
	1112.290	1113.704					
	1112.888	1114.064					
	1113.486	1114.418					
	1113.445	1114.752					
	1113.404	1115.063					
	1113.363	1115.354					
	1113.322	1115.623					
	1113.281	1115.870					

THE BASIC DESIGN STUDY ON CONSTRUCTION OF EASTERN ARTERIAL ROAD IN MONGOLIA

JAPAN INTERNATIONAL COOPERATION AGENCY (JICA)
 DEPARTMENT OF ROADS,
 MINISTRY OF INFRASTRUCTURE,
 THE GOVERNMENT OF MONGOLIA

PACIFIC CONSULTANTS INTERNATIONAL
 JAPAN OVERSEAS CONSULTANTS

Scale: AS SHOWN

Sheet No. C-6
 6/14

PLAN AND PROFILE
 STA. 304+900 - STA. 305+500
 (SECTION-6)

Figure 2-2-3-56 Plan and Profile (Section VI Sta.304+900-Sta.305+500)

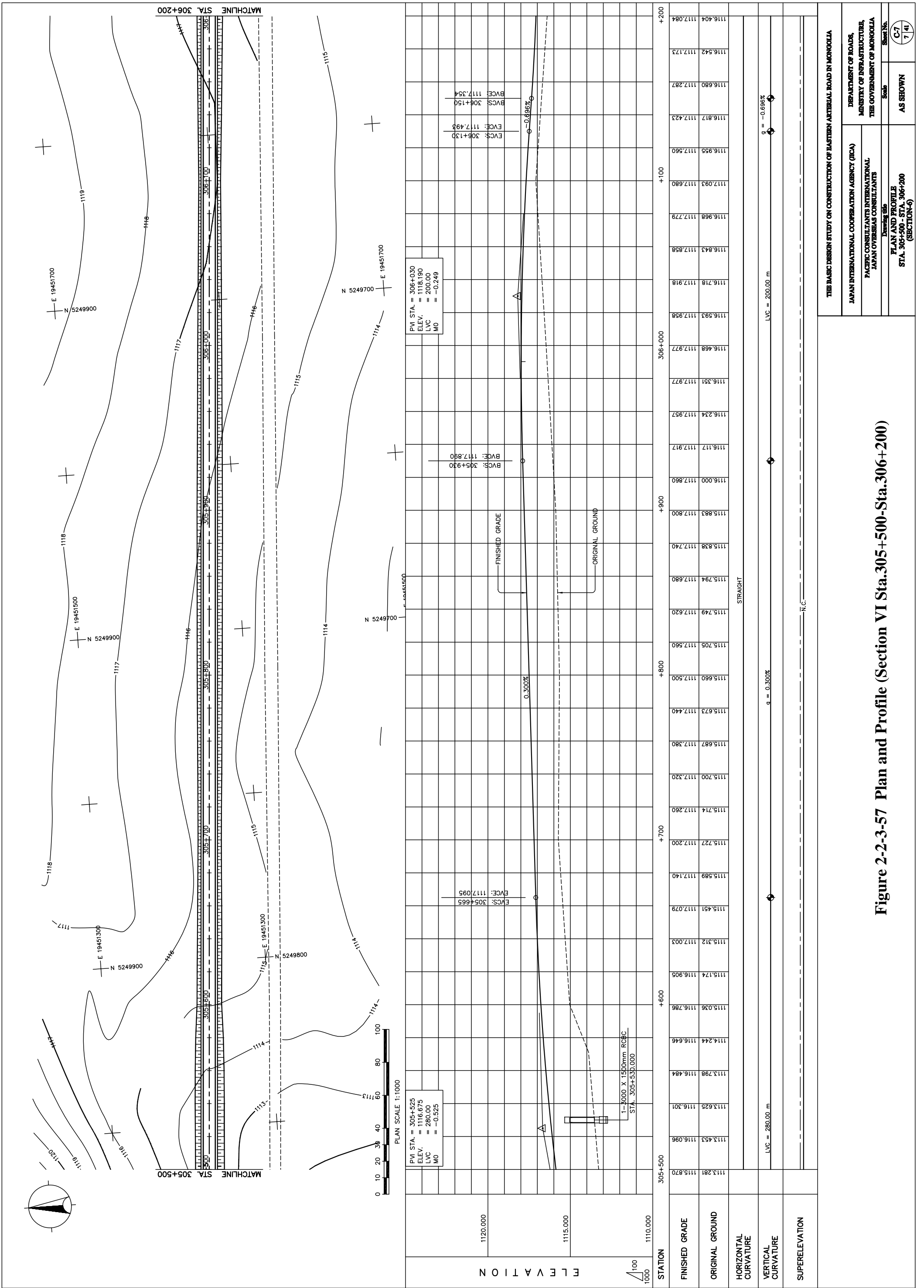


Figure 2-2-3-57 Plan and Profile (Section VI Sta.305+500-Sta.306+200)