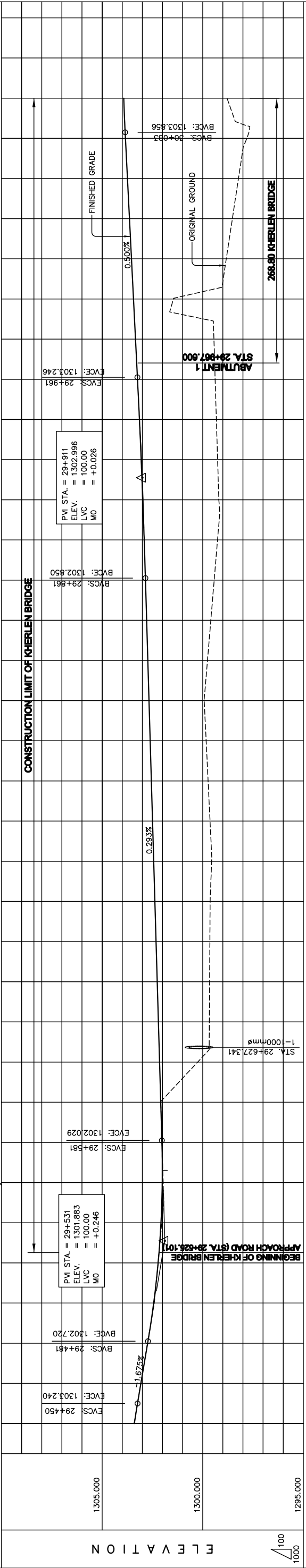


ELEMENTS OF CURVE

PI NO.	STATION	COORDINATES OF P.I.		I (deg)	R (m)	T (m)	E (m)	Lc (m)	e (%)	v (km/h)
		NORTHINGS	EASTINGS							
9	29+750.868	19309895.631	5287849.146	78°36'48"	250.00 RT	204.67	73.09	343.01	6.00	80.0



STATION	FINISHED GRADE	ORIGINAL GROUND	HORIZONTAL CURVATURE	VERTICAL CURVATURE	SUPERELEVATION
29+440	1303.412	1303.398			
	1303.077	1303.072			
	1302.743	1302.737			
	1302.408	1302.438			
	1302.220	1302.217			
	1302.036	1302.075			
	1301.967	1302.011			
	1302.025	1302.027			
	1302.084	1302.085			
	1302.252	1302.144			
	1299.671	1302.202			
	1299.632	1302.378			
	1299.556	1302.437			
	1299.637	1302.495			
	1299.733	1302.554			
	1299.830	1302.612			
	1299.926	1302.671			
	1299.764	1302.729			
	1299.697	1302.788			
	1299.431	1302.847			
	1299.264	1302.909			
	1299.199	1302.980			
	1299.261	1303.058			
	1299.322	1303.146			
	1299.383	1303.241			
	1299.443	1303.341			
	1301.459	1303.441			
	1298.829	1303.541			
	1298.527	1303.641			
	1298.224	1303.741			
	1297.805	1303.841			
	1298.794	1303.925			

PLAN AND PROFILE (STA. 29+440 TO STA. 30+100) (STAGE-2)

Drawing title

Scale AS SHOWN

Sheet No. F-1 / 19

Scale AS SHOWN

DEPARTMENT OF ROADS,
MINISTRY OF INFRASTRUCTURE,
THE GOVERNMENT OF MONGOLIA

JAPAN INTERNATIONAL COOPERATION AGENCY (JICA)
PACIFIC CONSULTANTS INTERNATIONAL
JAPAN OVERSEAS CONSULTANTS

THE BASIC DESIGN STUDY ON CONSTRUCTION OF EASTERN ARTERIAL ROAD IN MONGOLIA

Figure 2-2-3-41 Overall View of Kherlen Bridge(1) (Section II New Construction)

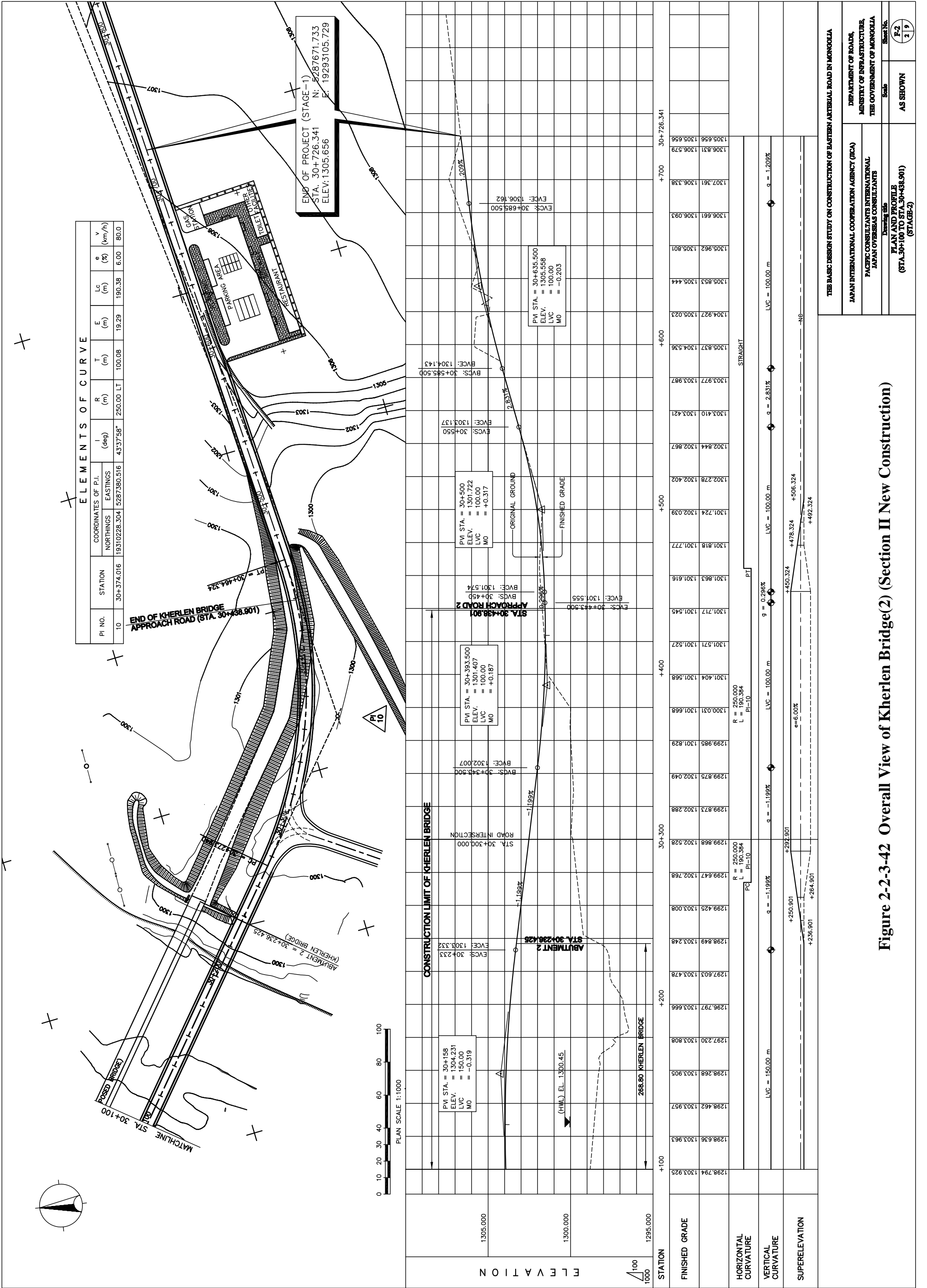


Figure 2-2-3-42 Overall View of Kherlen Bridge(2) (Section II New Construction)

THE BASIC DESIGN STUDY ON CONSTRUCTION OF EASTERN ARTERIAL ROAD IN MONGOLIA

JAPAN INTERNATIONAL COOPERATION AGENCY (JICA)
 PACIFIC CONSULTANTS INTERNATIONAL
 THE GOVERNMENT OF MONGOLIA

DEPARTMENT OF ROADS,
 MINISTRY OF INFRASTRUCTURE,
 THE GOVERNMENT OF MONGOLIA

Scale AS SHOWN

Sheet No. F-2 / 29

PLAN AND PROFILE
 (STA.30+100 TO STA.30+438.901)
 (STAGE-2)