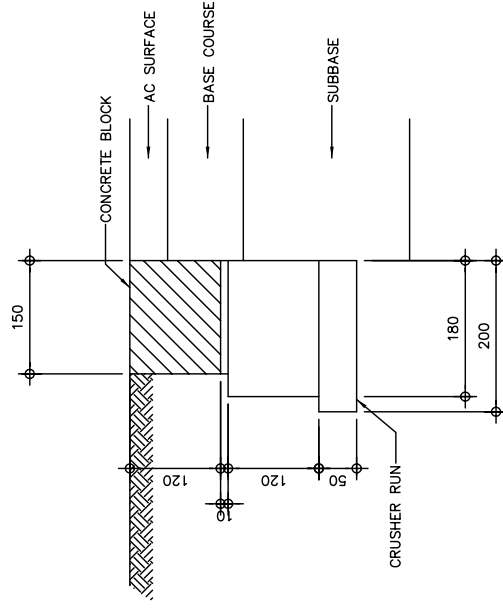
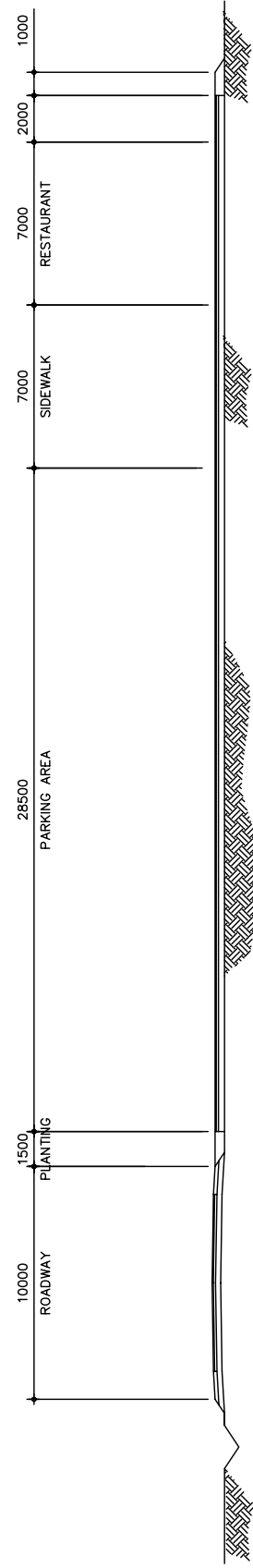


1 PLAN SCALE 1:100



3 DETAIL "A" SCALE 1:100



2 CROSS SECTION "A" SCALE 1:600

THE BASIC DESIGN STUDY ON CONSTRUCTION OF EASTERN ARTERIAL ROAD IN MONGOLIA	
JAPAN INTERNATIONAL COOPERATION AGENCY (JICA)	DEPARTMENT OF ROADS, MINISTRY OF INFRASTRUCTURE, THE GOVERNMENT OF MONGOLIA
PACIFIC CONSULTANTS INTERNATIONAL JAPAN OVERSEAS CONSULTANTS	Scale
Drawing title	Sheet No.
ROAD STATION (STAGE-1)	AS SHOWN
	G-1 1/1

Figure 2-2-3-27 Road-side Station (Michi-no-Eki)

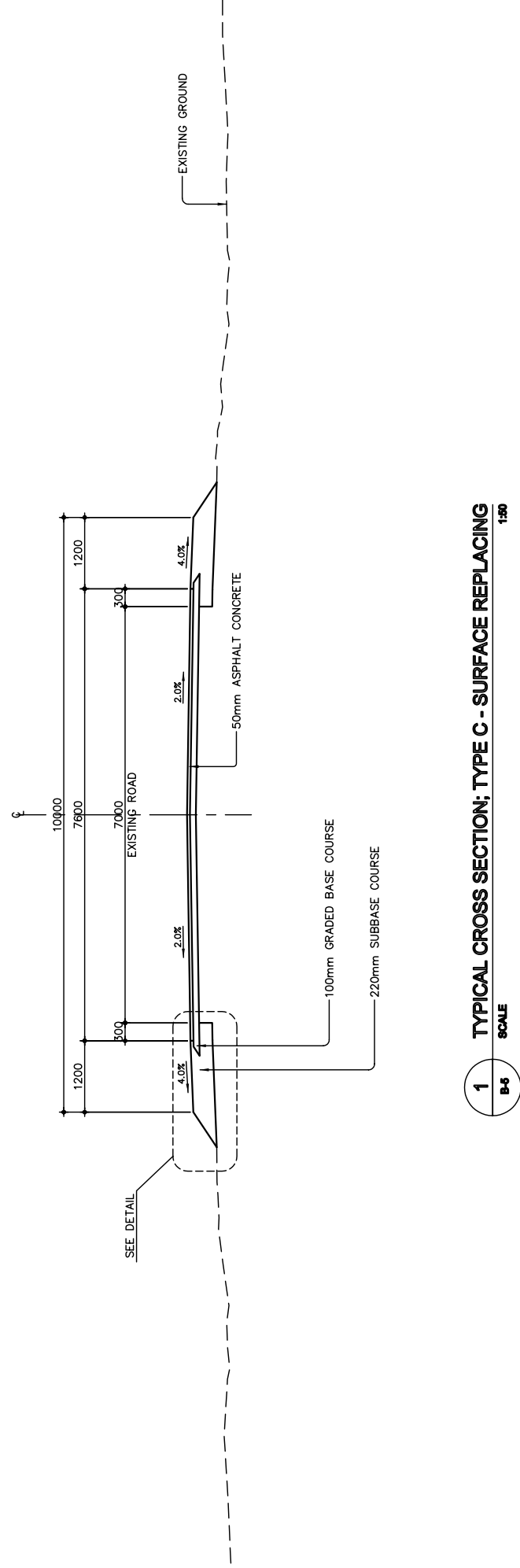
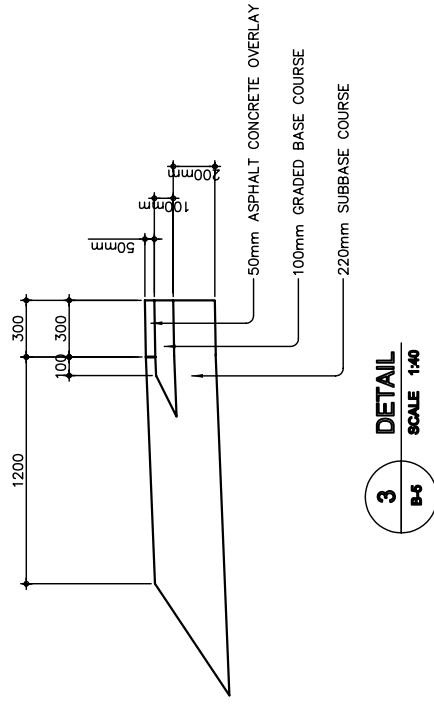
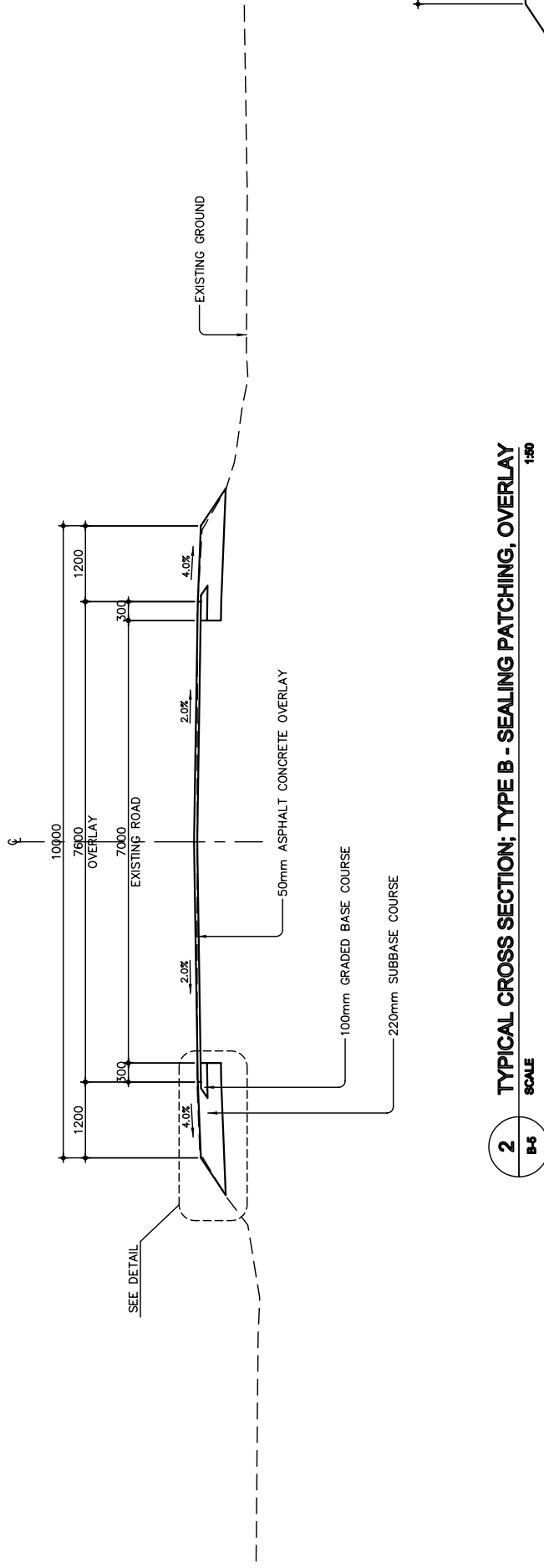
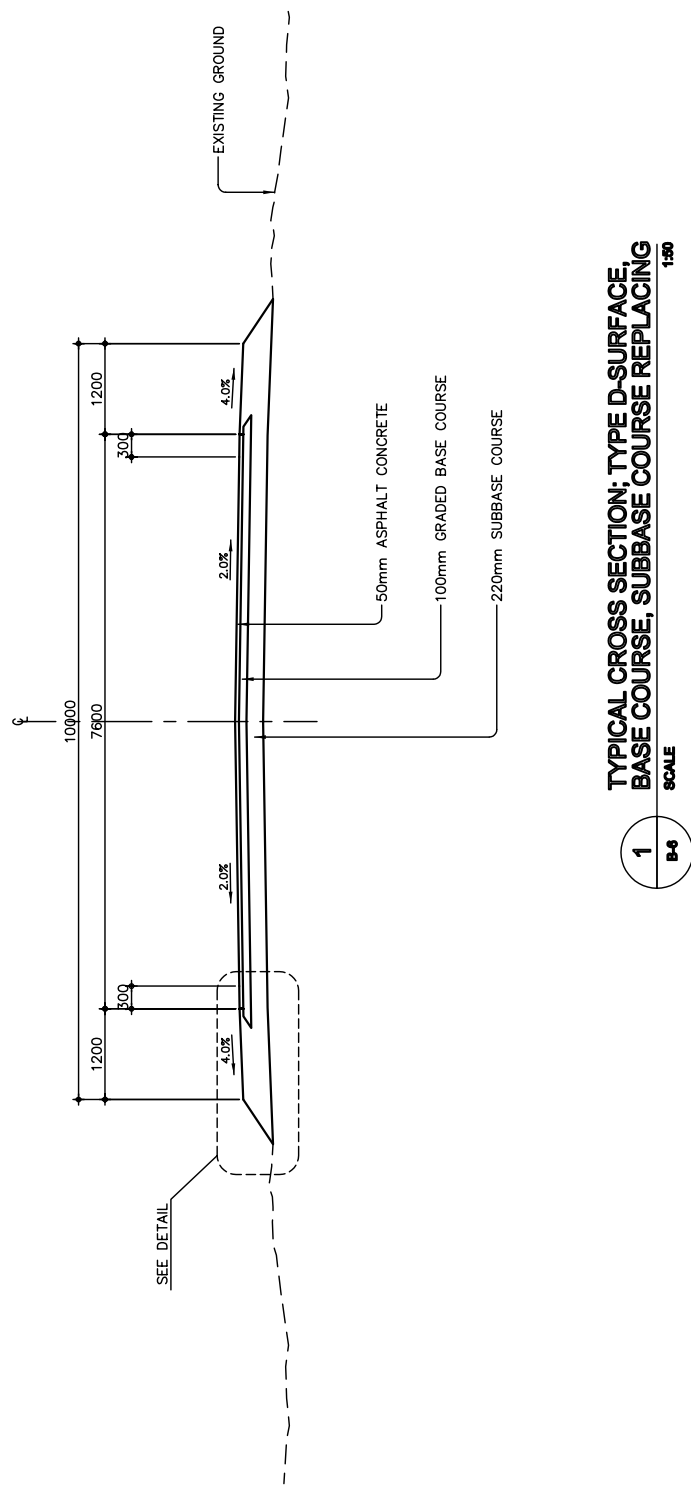


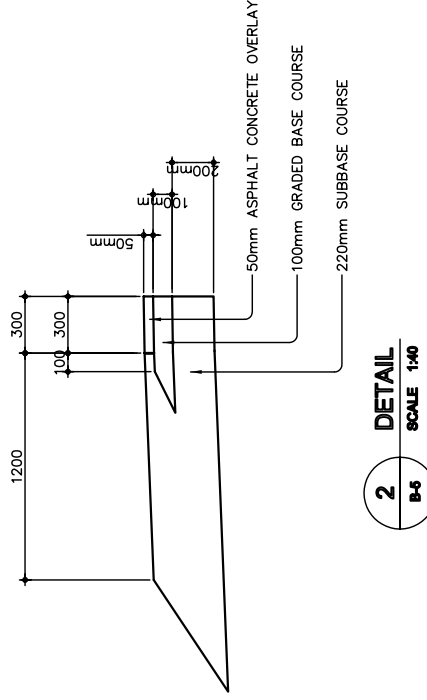
Figure 2-2-3-28 Typical Roadway Section(1) Type "B" and "C"

THE BASIC DESIGN STUDY ON CONSTRUCTION OF EASTERN ARTERIAL ROAD IN MONGOLIA	
JAPAN INTERNATIONAL COOPERATION AGENCY (JICA)	DEPARTMENT OF ROADS, MINISTRY OF INFRASTRUCTURE, THE GOVERNMENT OF MONGOLIA
PACIFIC CONSULTANTS INTERNATIONAL JAPAN OVERSEAS CONSULTANTS	Scale AS SHOWN
Drawing title TYPICAL ROADWAY SECTION TYPE "B" AND TYPE "C" (STAGE-2)	Sheet No. B-5 5/6



1
B-5
SCALE 1:40

TYPICAL CROSS SECTION; TYPE D-SURFACE,
BASE COURSE, SUBBASE COURSE REPLACING

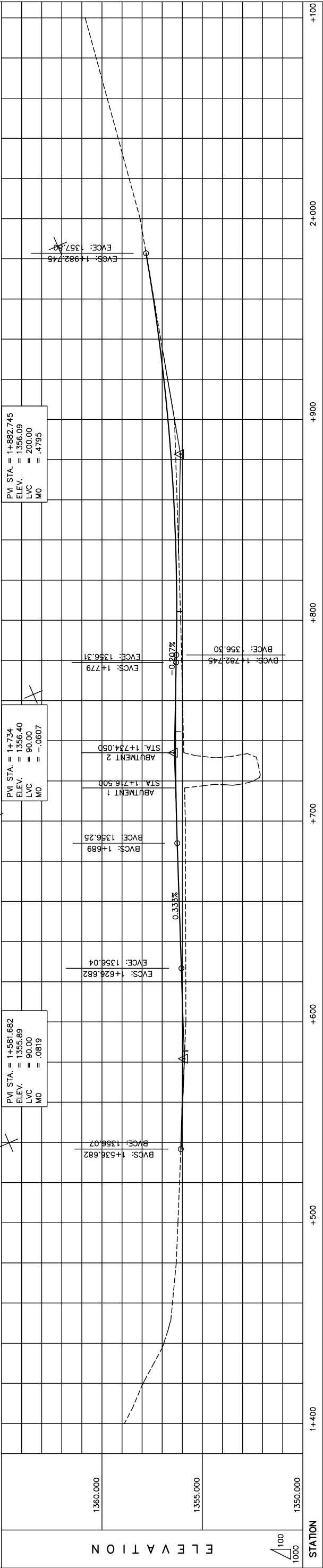
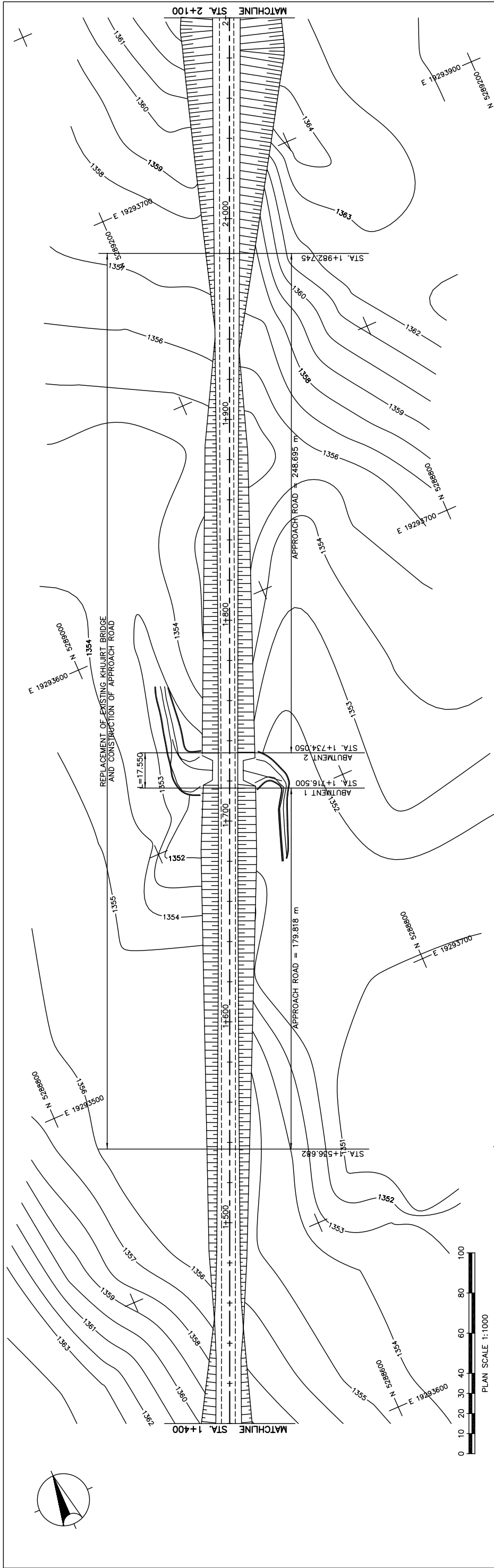


2
B-5
SCALE 1:40

DETAIL

Figure 2-2-3-29 Typical Roadway Section(2)Type "D"

THE BASIC DESIGN STUDY ON CONSTRUCTION OF EASTERN ARTERIAL ROAD IN MONGOLIA	
JAPAN INTERNATIONAL COOPERATION AGENCY (JICA)	DEPARTMENT OF ROADS, MINISTRY OF INFRASTRUCTURE, THE GOVERNMENT OF MONGOLIA
PACIFIC CONSULTANTS INTERNATIONAL JAPAN OVERSEAS CONSULTANTS	Scale
Drawing title	Sheet No.
TYPICAL ROADWAY SECTION (TYPE-D) (STAGE-2)	AS SHOWN
	B-6 6/6



STATION	1+400	+500	+600	+700	+800	+900	+1000	+1100	+1200	+1300	+1400	+1500	+1600	+1700	+1800	+1900	+2000	+2100	+2200		
FINISHED GRADE	1356.06	1356.14	1356.06	1356.06	1356.06	1356.06	1356.06	1356.06	1356.06	1356.06	1356.06	1356.06	1356.06	1356.06	1356.06	1356.06	1356.06	1356.06	1356.06	1356.06	
ORIGINAL GROUND	1357.95	1356.92	1356.49	1356.30	1356.22	1356.14	1356.06	1356.00	1355.98	1355.90	1355.82	1355.74	1355.66	1355.58	1355.50	1355.42	1355.34	1355.26	1355.18	1355.10	1355.02
HORIZONTAL CURVATURE																					
VERTICAL CURVATURE																					
SUPERELEVATION																					

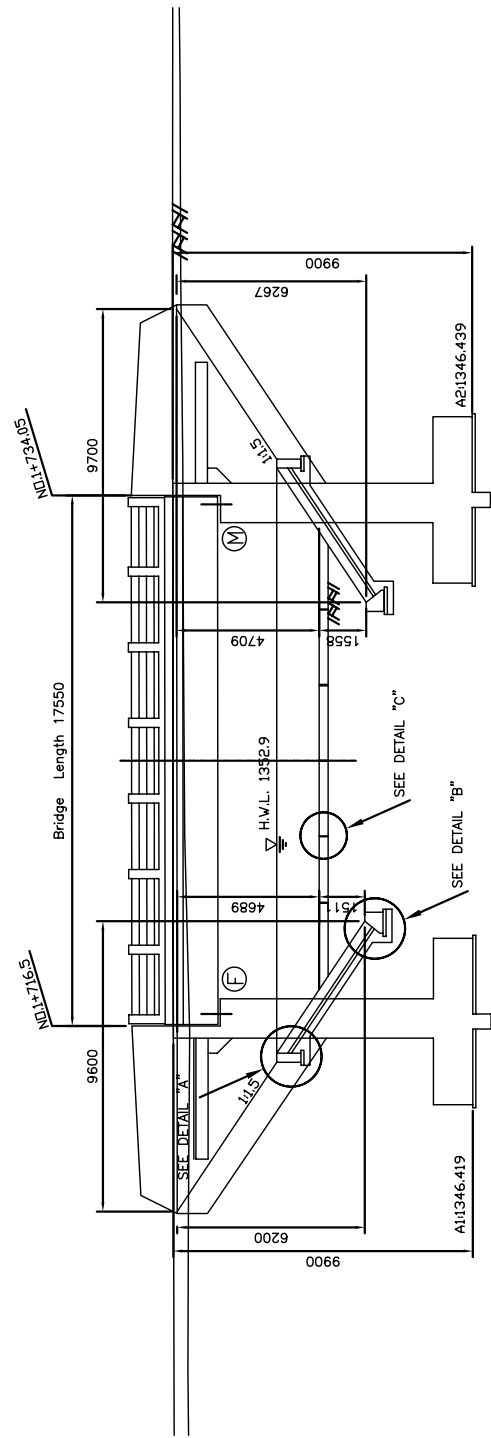
Figure 2-2-3-30 Overall View of Khujirt Bridge(Section II Rehabilitation)

THE BASIC DESIGN STUDY ON CONSTRUCTION OF EASTERN ARTERIAL ROAD IN MONGOLIA

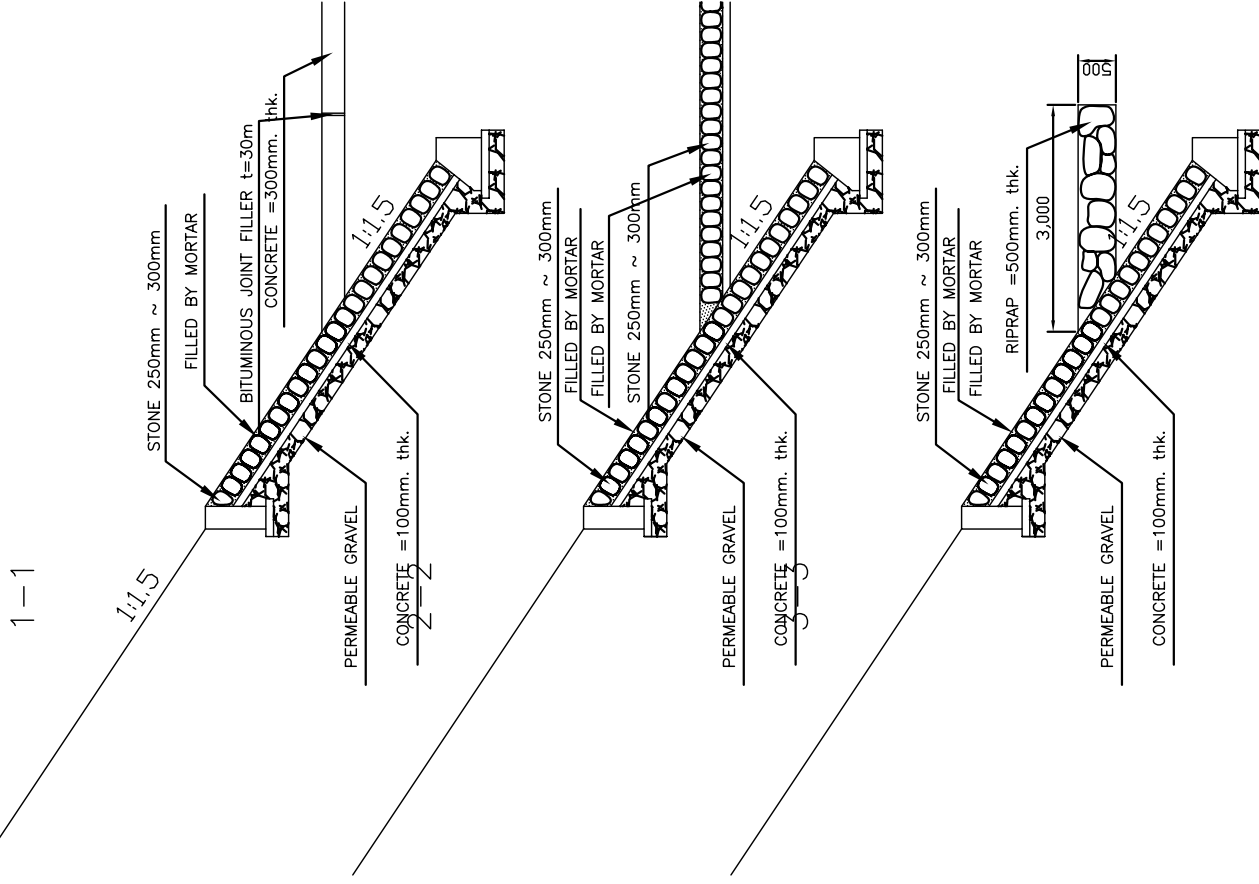
JAPAN INTERNATIONAL COOPERATION AGENCY (JICA) PACIFIC CONSULTANTS INTERNATIONAL JAPAN OVERSEAS CONSULTANTS	DEPARTMENT OF ROADS, MINISTRY OF INFRASTRUCTURE, THE GOVERNMENT OF MONGOLIA
Drawing title PLAN AND PROFILE (STA.1+400 TO STA.2+100) (STAGE-2)	Scale AS SHOWN
Sheet No. D-1 1/6	

General View of Revetment (Khujirt Bridge)

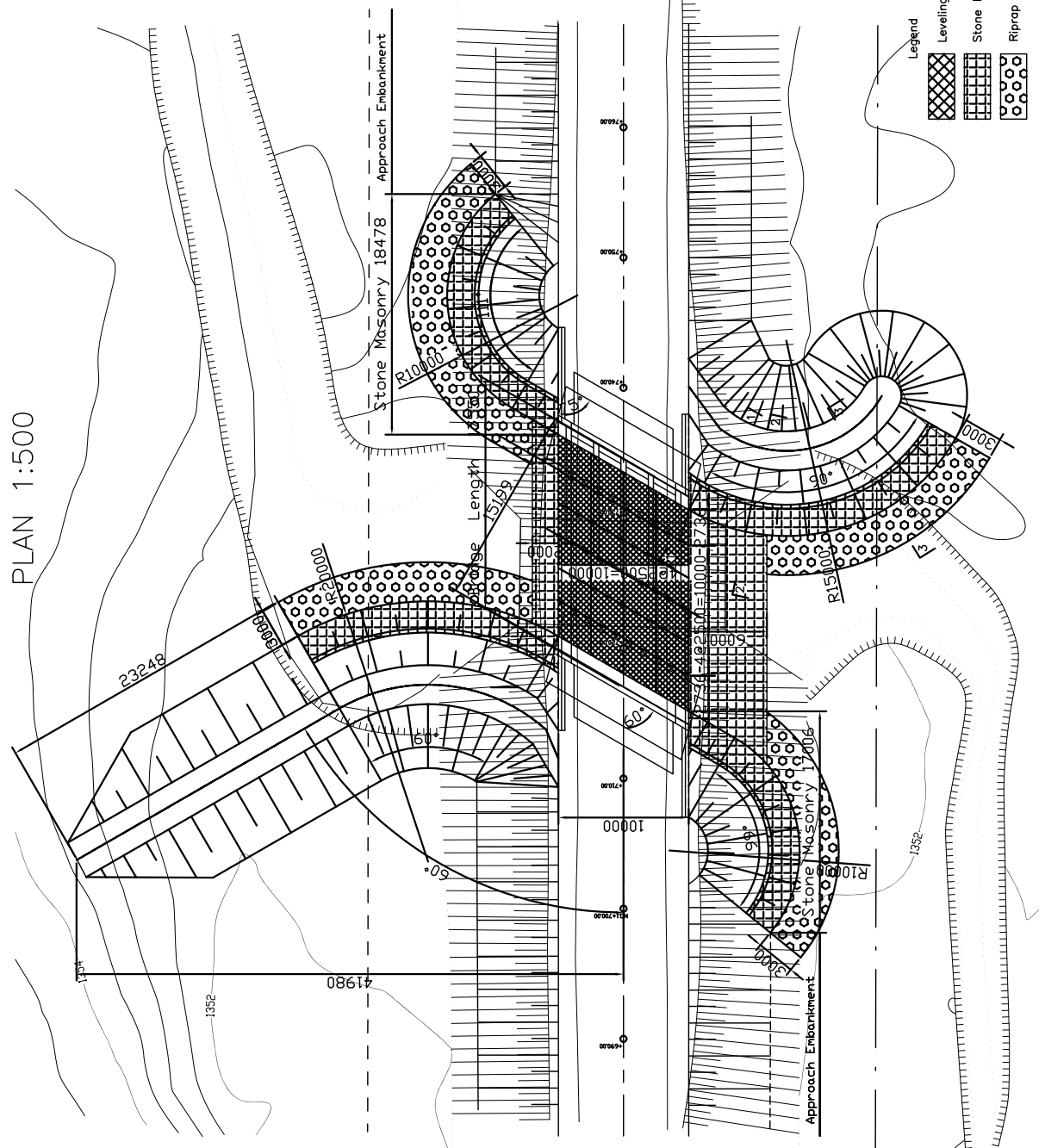
PROFILE 1:250



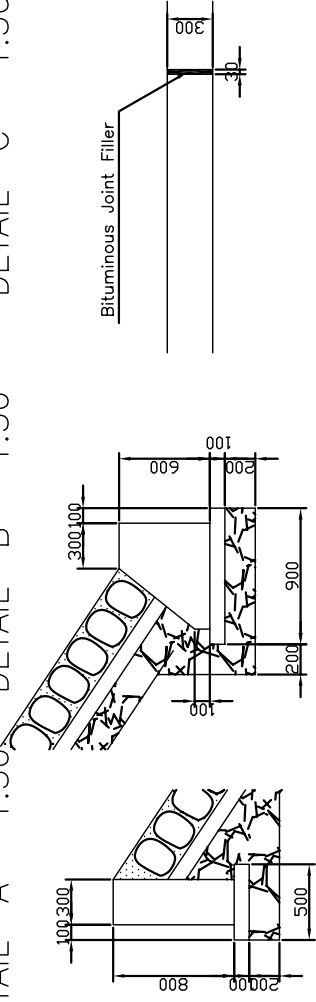
SECTIONS 1:100



PLAN 1:500



DETAIL "A" 1:500 DETAIL "B" 1:500 DETAIL "C" 1:500

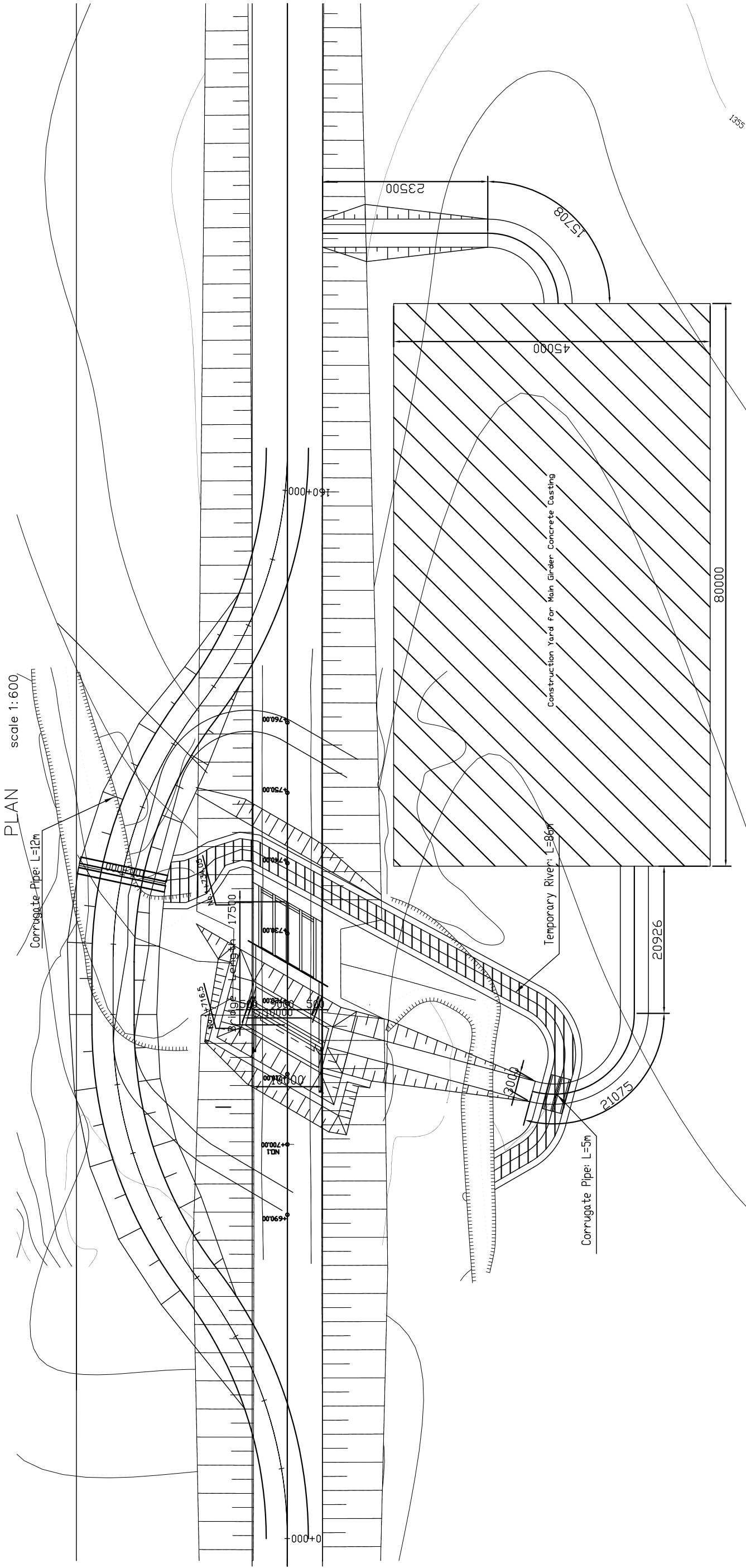


THE BASIC DESIGN STUDY ON CONSTRUCTION OF EASTERN ARTERIAL ROAD IN MONGOLIA	
JAPAN INTERNATIONAL COOPERATION AGENCY (JICA)	DEPARTMENT OF ROADS,
PACIFIC CONSULTANTS INTERNATIONAL JAPAN OVERSEAS CONSULTANTS	MINISTRY OF INFRASTRUCTURE, THE GOVERNMENT OF MONGOLIA
Drawing title	
GENERAL VIEW OF REVETMENT (KHUJIRT BRIDGE) (STAGE-2)	
Scale	AS SHOWN
Sheet No.	0-3 3/6

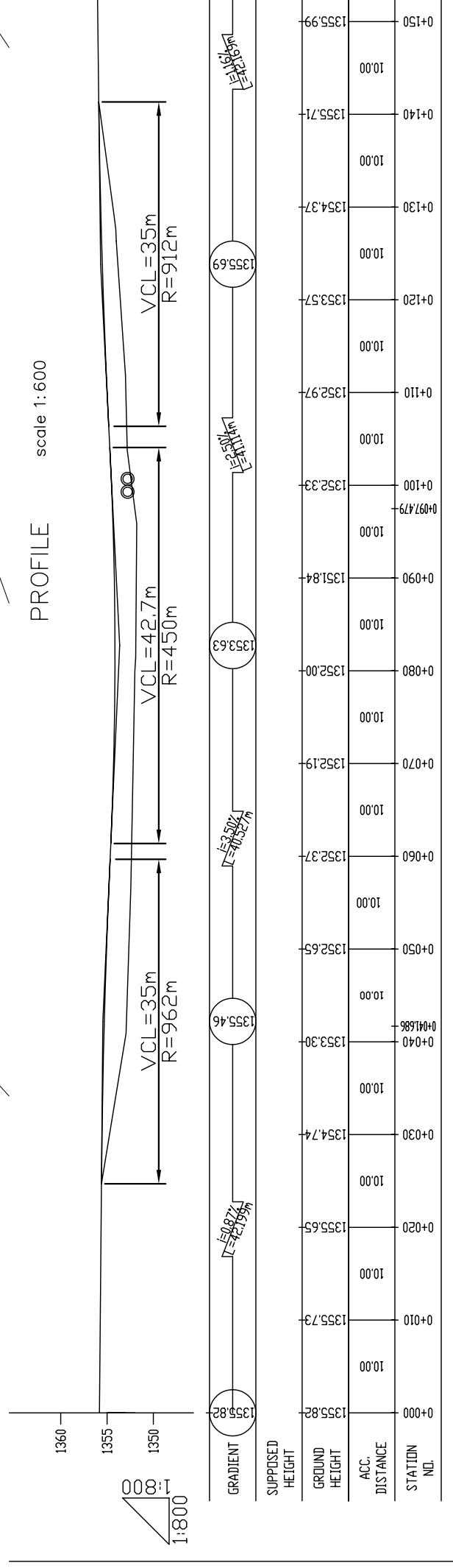
Figure 2-2-3-32 General View of Revetment, Khujirt Bridge

CONSTRUCTION PLAN (1/3) (KHUJIRT BRIDGE)

PLAN scale 1:600



PROFILE scale 1:600

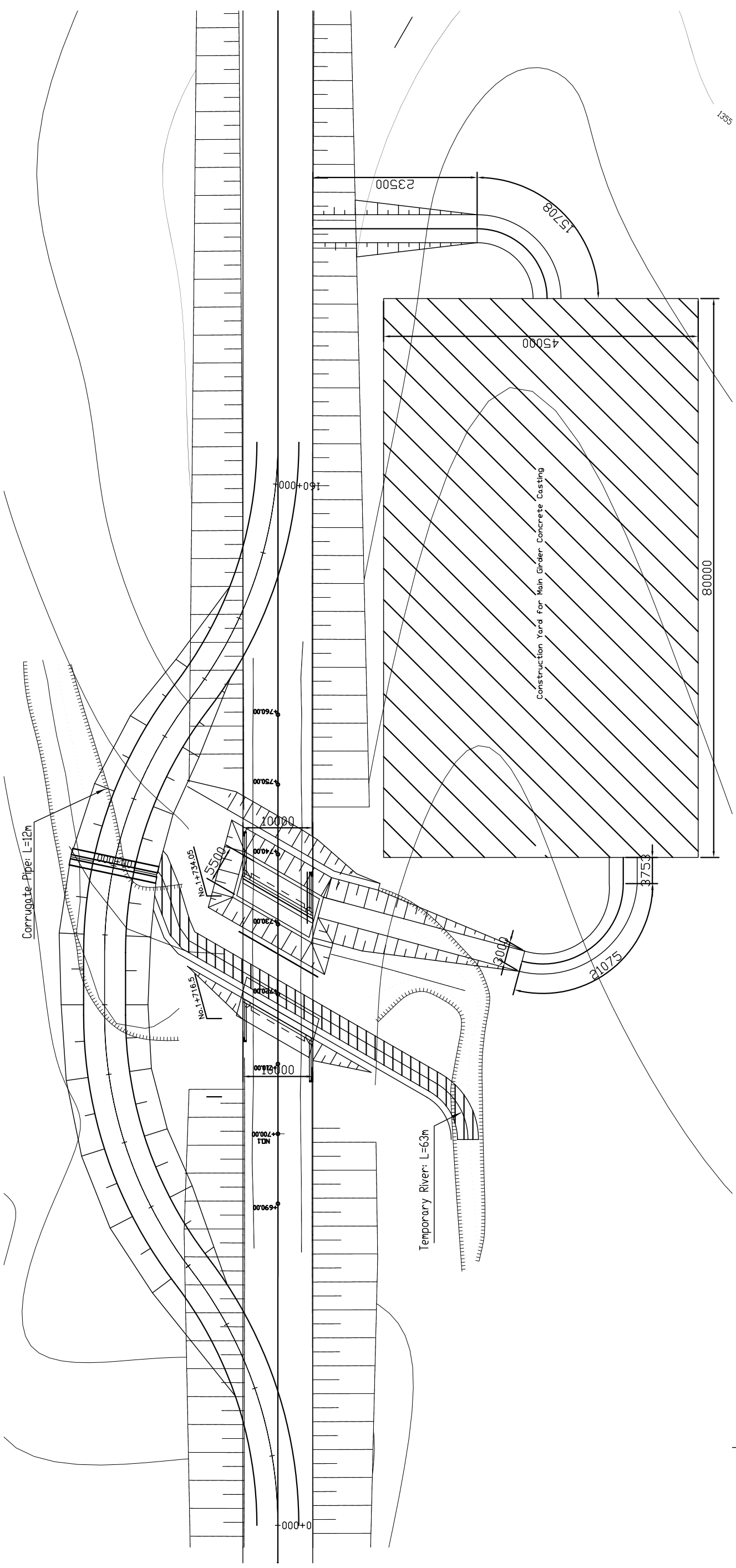


THE BASIC DESIGN STUDY ON CONSTRUCTION OF EASTERN ARTERIAL ROAD IN MONGOLIA		Scale	Sheet No.
JAPAN INTERNATIONAL COOPERATION AGENCY (JICA)	DEPARTMENT OF ROADS,		
PACIFIC CONSULTANTS INTERNATIONAL	MINISTRY OF INFRASTRUCTURE,	AS SHOWN	
JAPAN OVERSEAS CONSULTANTS	THE GOVERNMENT OF MONGOLIA		
Drawing title		Scale	
CONSTRUCTION PLAN (1)		AS SHOWN	
(KHUJIRT BRIDGE)		AS SHOWN	
(STAGE-2)		AS SHOWN	
		0-4	
		4/6	

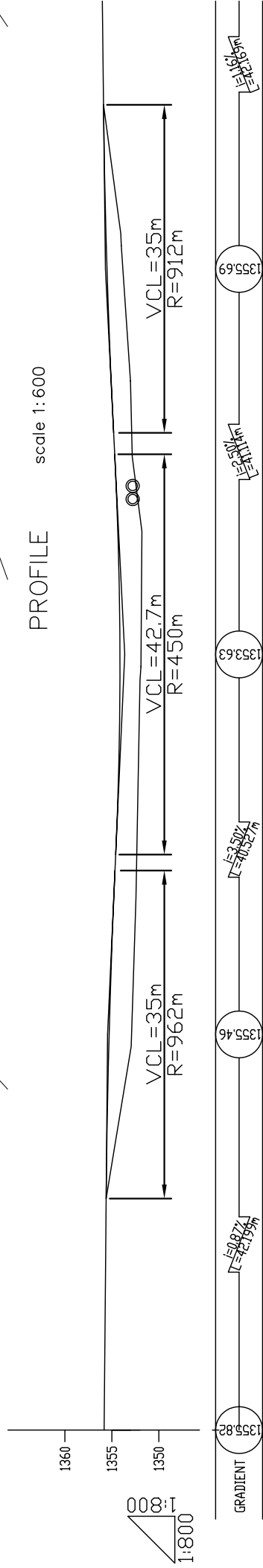
Figure 2-2-3-33 Construction Plan of Khujirt Bridge(1)

CONSTRUCTION PLAN (2/3) (KHUJIRT BRIDGE)

PLAN scale 1:600



PROFILE scale 1:600



STATION NO.	ACC. DISTANCE	GROUND HEIGHT	SUPPOSED HEIGHT
0+000	10.00	1355.82	1355.82
0+010	10.00	1355.73	1355.65
0+020	10.00	1355.65	1355.46
0+030	10.00	1354.74	1353.30
0+040	10.00	1353.30	1352.00
0+050	10.00	1352.65	1352.33
0+060	10.00	1352.37	1352.97
0+070	10.00	1352.19	1353.57
0+080	10.00	1352.00	1354.37
0+090	10.00	1351.84	1355.71
0+100	10.00	1352.33	1355.99
0+110	10.00	1352.97	
0+120	10.00	1353.57	
0+130	10.00	1354.37	
0+140	10.00	1355.71	
0+150	10.00	1355.99	

THE BASIC DESIGN STUDY ON CONSTRUCTION OF EASTERN ARTERIAL ROAD IN MONGOLIA

JAPAN INTERNATIONAL COOPERATION AGENCY (JICA)

DEPARTMENT OF ROADS,
MINISTRY OF INFRASTRUCTURE,
THE GOVERNMENT OF MONGOLIA

PACIFIC CONSULTANTS INTERNATIONAL
JAPAN OVERSEAS CONSULTANTS

Drawing title
CONSTRUCTION PLAN (2)
(KHUJIRT BRIDGE)
(STAGE-2)

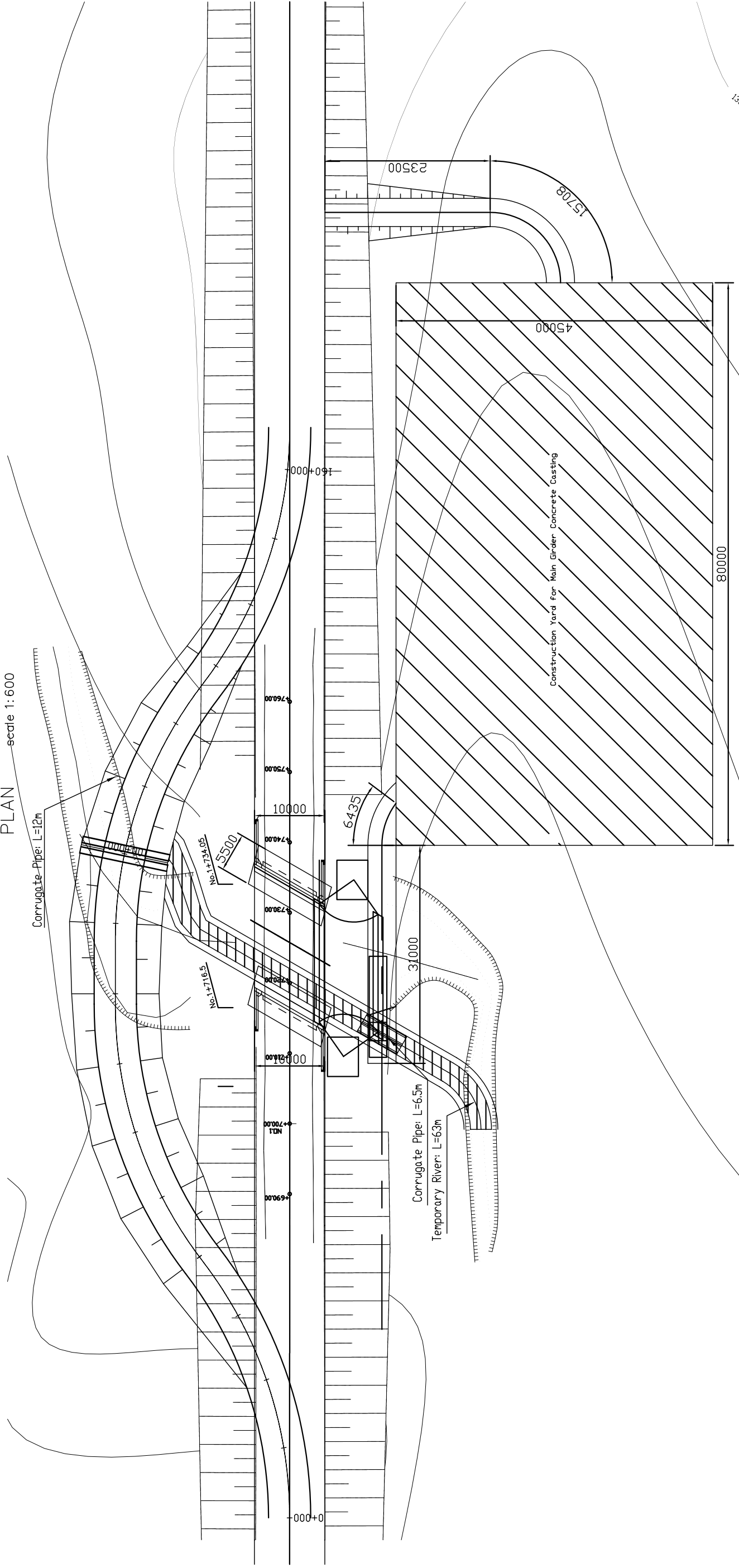
Scale
AS SHOWN

Sheet No.
0-5
5/6

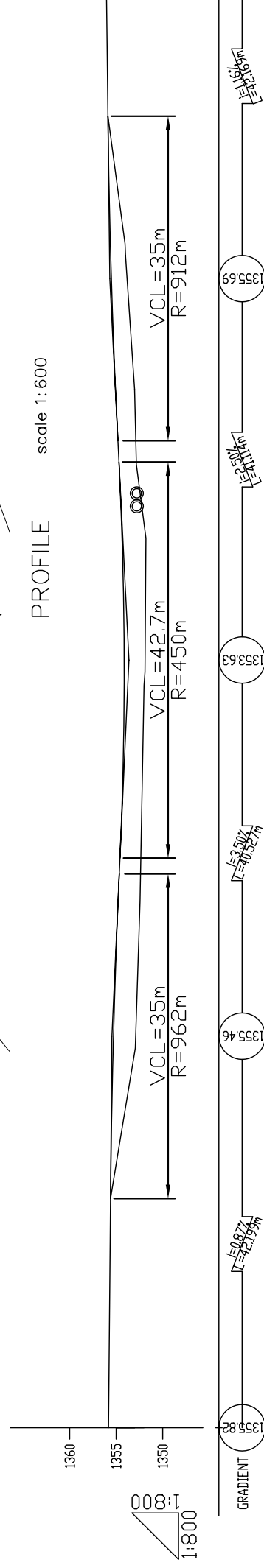
Figure 2-2-3-34 Construction Plan of Khujirt Bridge(2)

CONSTRUCTION PLAN (3/3) (KHUJIRT BRIDGE)

PLAN scale 1:600



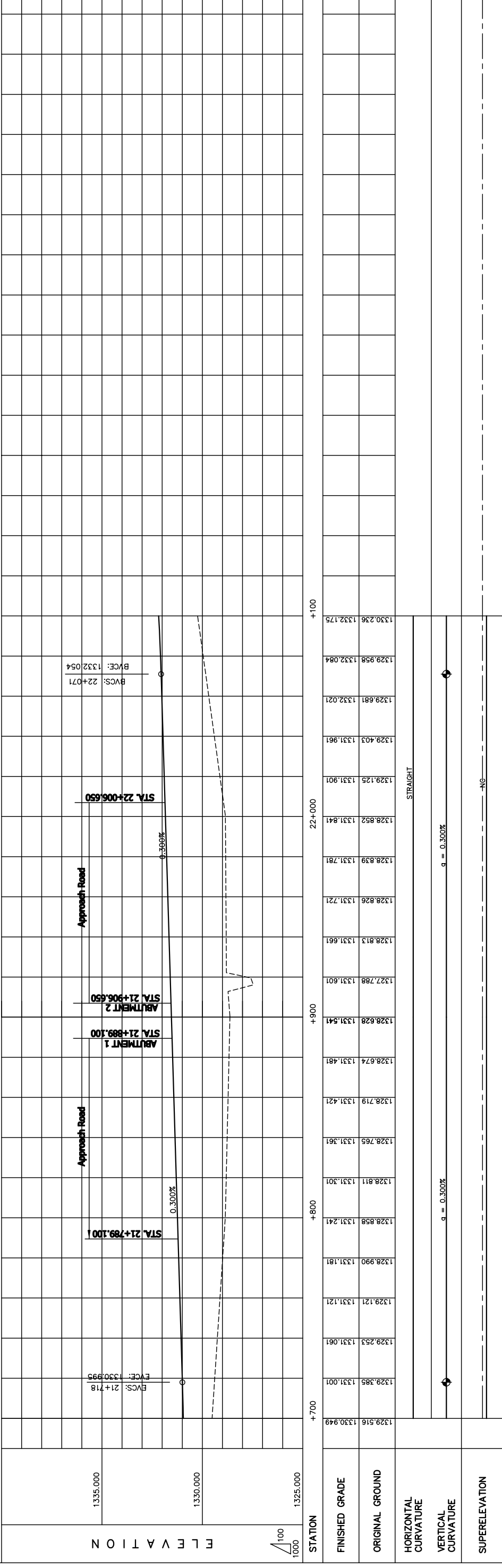
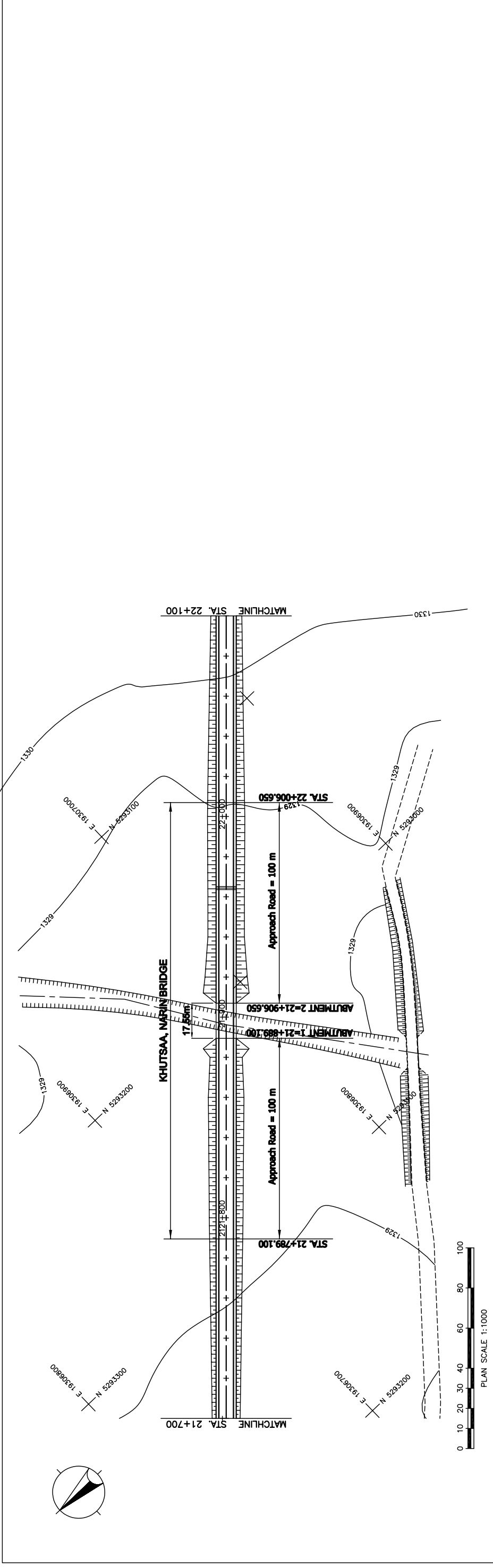
PROFILE scale 1:600



STATION NO.	ACC. DISTANCE	GROUND HEIGHT	SUPPOSED HEIGHT	GRADIENT
0+000	1000	1355.82	1355.82	
0+010	1000	1355.73	1355.73	
0+020	1000	1355.65	1355.65	$\frac{1}{42.165}$
0+030	1000	1354.74	1354.74	
0+040	1000	1353.30	1353.30	$\frac{1}{42.165}$
0+050	1000	1352.65	1352.65	
0+060	1000	1352.37	1352.37	$\frac{1}{42.165}$
0+070	1000	1352.19	1352.19	
0+080	1000	1352.00	1352.00	
0+090	1000	1351.84	1351.84	
0+097.479	1000	1352.33	1352.33	
0+100	1000	1352.97	1352.97	
0+110	1000	1352.97	1352.97	
0+120	1000	1353.57	1353.57	
0+130	1000	1354.37	1354.37	
0+140	1000	1355.71	1355.71	
0+150	1000	1355.99	1355.99	

THE BASIC DESIGN STUDY ON CONSTRUCTION OF EASTERN ARTERIAL ROAD IN MONGOLIA	
JAPAN INTERNATIONAL COOPERATION AGENCY (JICA)	DEPARTMENT OF ROADS,
PACIFIC CONSULTANTS INTERNATIONAL	MINISTRY OF INFRASTRUCTURE,
JAPAN OVERSEAS CONSULTANTS	THE GOVERNMENT OF MONGOLIA
Drawing title	Scale
CONSTRUCTION PLAN (3)	AS SHOWN
(KHUJIRT BRIDGE)	Sheet No.
(STAGE-2)	0-6
	6/6

Figure 2-2-3-35 Construction Plan of Khujirt Bridge(3)



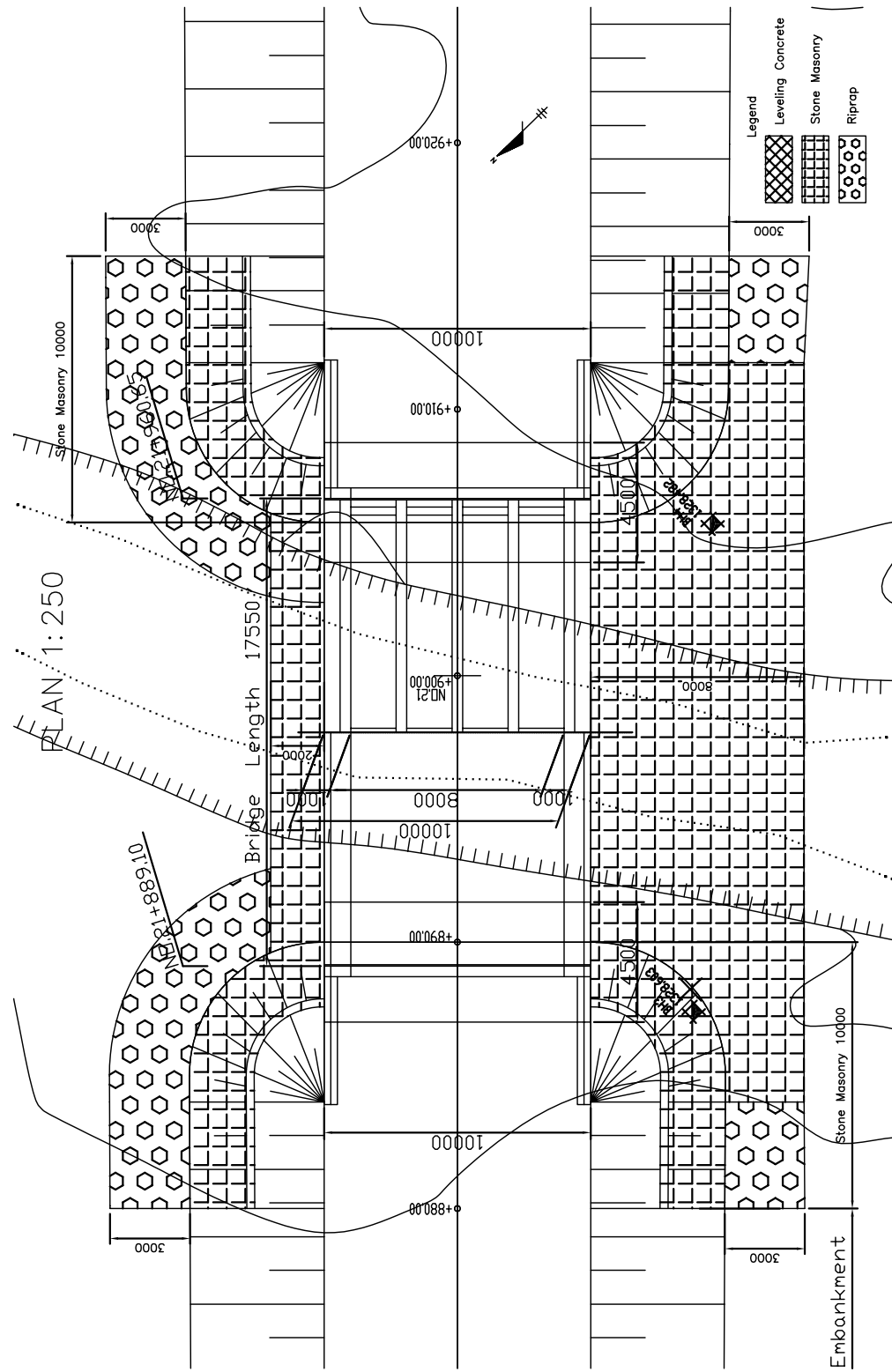
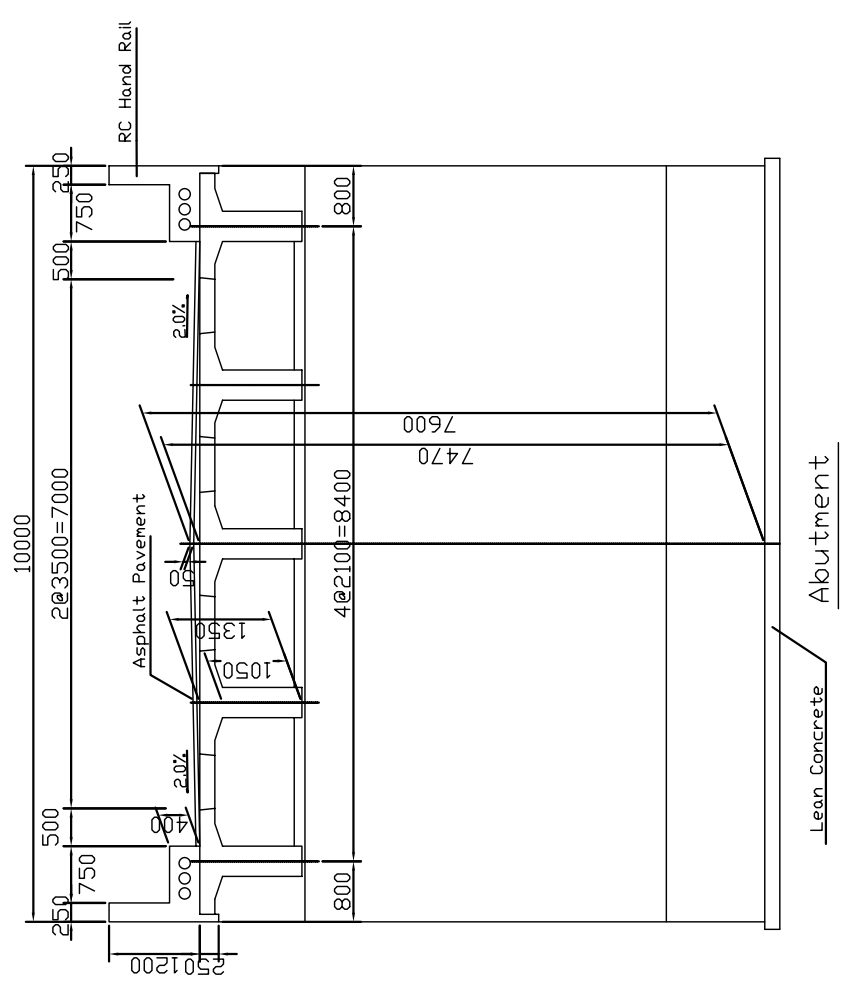
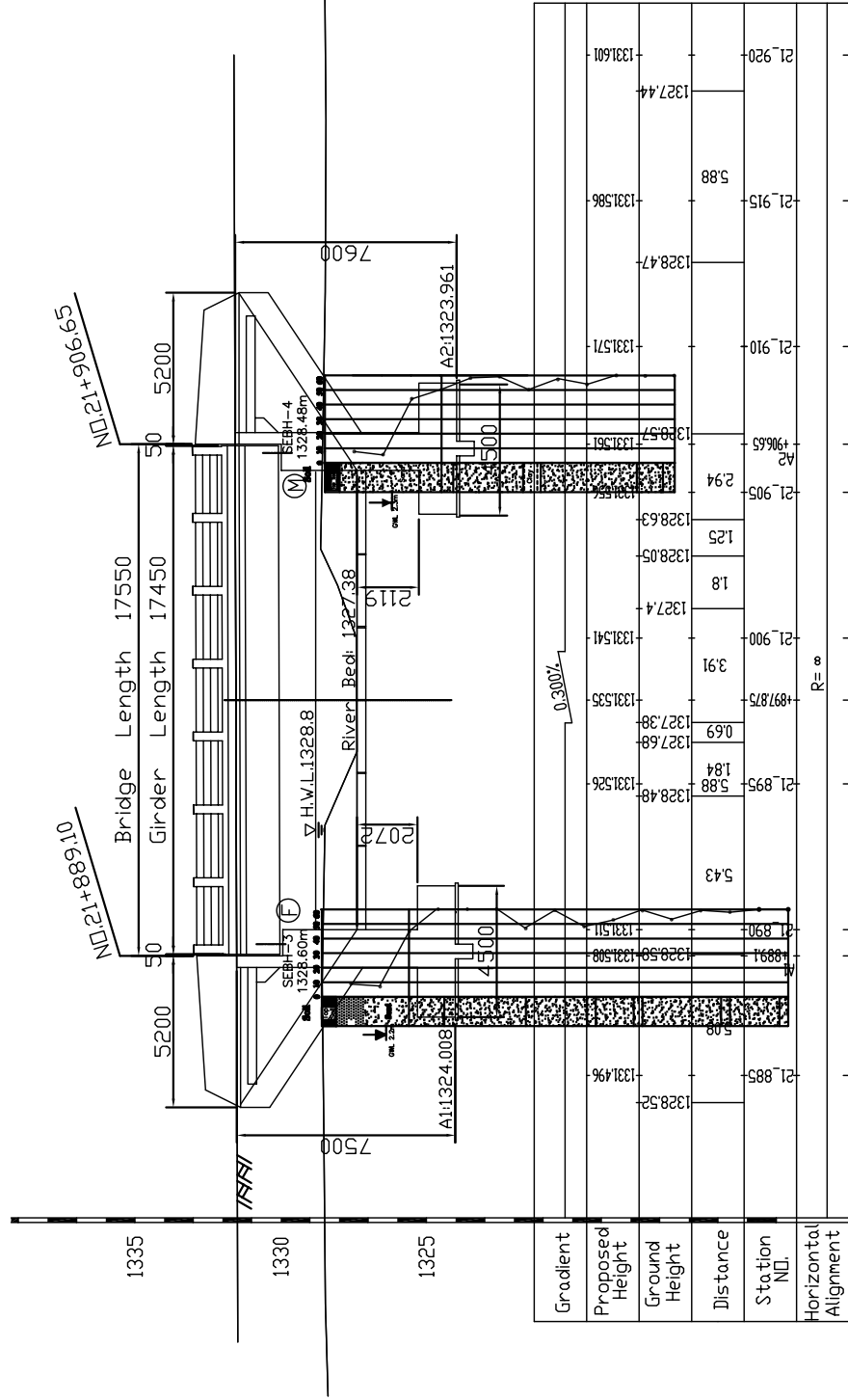
STATION	FINISHED GRADE	ORIGINAL GROUND	HORIZONTAL CURVATURE	VERTICAL CURVATURE	SUPERELEVATION
+700	1329.949	1329.516			
	1329.385	1331.001			
	1329.253	1331.061			
	1329.121	1331.121			
	1328.990	1331.181			
	1328.858	1331.241			
+800	1328.811	1331.301			
	1328.765	1331.361			
	1328.719	1331.421			
	1328.674	1331.481			
	1328.628	1331.541			
+900	1327.788	1331.601			
	1328.813	1331.661			
	1328.826	1331.721			
	1328.839	1331.781			
	1328.852	1331.841			
	1329.125	1331.901			
	1329.403	1331.961			
	1329.681	1332.021			
	1329.958	1332.084			
	1330.236	1332.175			
+100					

Figure 2-2-3-36 Overall View of Khutsaa Narin Bridge(Section II New Construction)

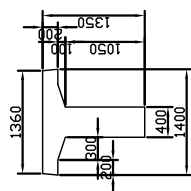
GENERAL VIEW (KHUTSAA NARIN BRIDGE)

PROFILE 1:250

SECTION 1:100



SECTION OF GIRDER
1:100



DESIGN CRITERIA	
Design Speed	V=100km/h
Bridge Length	17.55km
Total Width	10.00m
Longitudinal gradient	0.300%
Cross-fall of carriage way	2.0%
Superstructure Type	RC-T Shape Girder
Substructure Type	Abutment RC Reversed T-Shape
Foundation Type	Spread

MATERIAL STRENGTH	
Category	Material Specification
Superstructure	Girder $\sigma_{ck}=24N/mm^2$
	Cross Beam $\sigma_{ck}=24N/mm^2$
	Slab $\sigma_{ck}=24N/mm^2$
Bridge Surface	Asphalt Pavement $t=5cm$
	Curb, Hand Rail $\sigma_{ck}=21N/mm^2$
	Leveling Concrete $\sigma_{ck}=21N/mm^2$
	Concrete $\sigma_{ck}=21N/mm^2$
Substructure	Approach Slab $\sigma_{ck}=21N/mm^2$
	Lean Concrete $\sigma_{ck}=18N/mm^2$
	Reinforcing Bar $SJD295(\sigma_{py}>295N/mm^2)$

CENTER LINE

THE BASIC DESIGN STUDY ON CONSTRUCTION OF EASTERN ARTERIAL ROAD IN MONGOLIA

JAPAN INTERNATIONAL COOPERATION AGENCY (JICA)
DEPARTMENT OF ROADS,
MINISTRY OF INFRASTRUCTURE,
THE GOVERNMENT OF MONGOLIA

PACIFIC CONSULTANTS INTERNATIONAL
JAPAN OVERSEAS CONSULTANTS

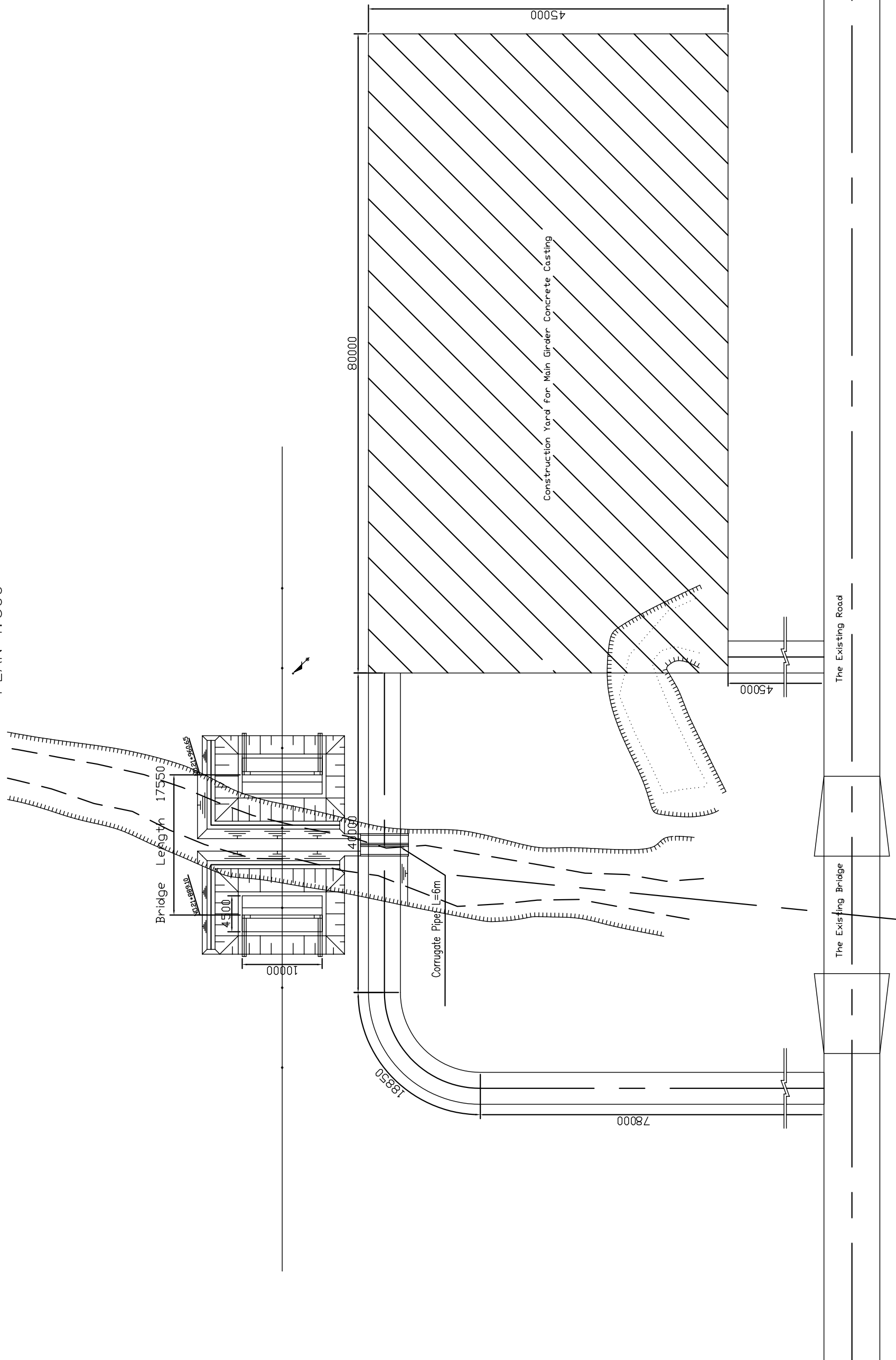
Drawing title
GENERAL VIEW
(KHUTSAA NARIN BRIDGE)
Scale
AS SHOWN

Sheet No.
E-2
2/5

Figure 2-2-3-37 General View of Khutsaa Narin Bridge

CONSTRUCTION PLAN (1/2) (KHUTSAA NARIN BRIDGE)

PLAN 1:500

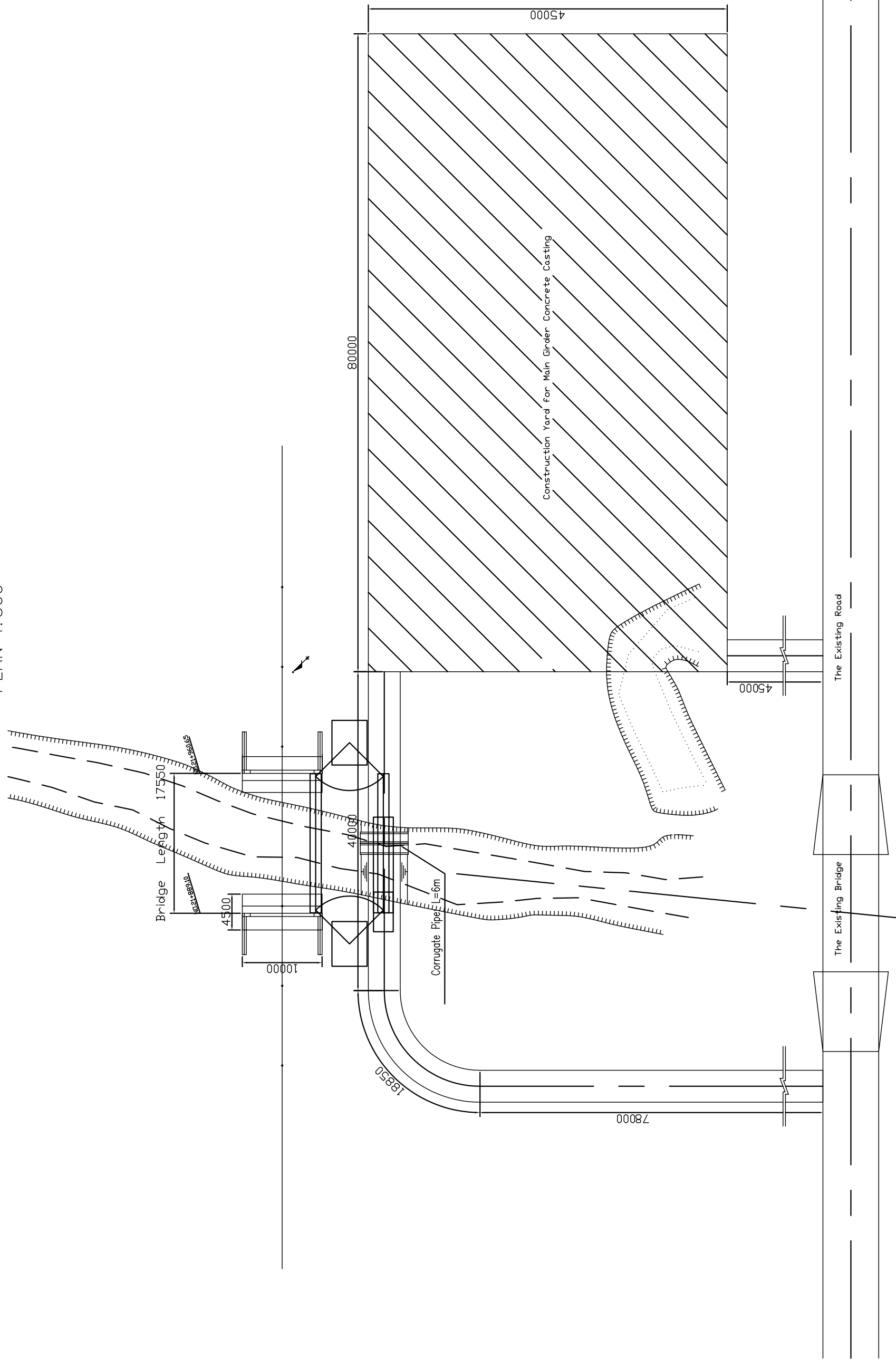


THE BASIC DESIGN STUDY ON CONSTRUCTION OF EASTERN ARTERIAL ROAD IN MONGOLIA	
JAPAN INTERNATIONAL COOPERATION AGENCY (JICA)	DEPARTMENT OF ROADS,
PACIFIC CONSULTANTS INTERNATIONAL JAPAN OVERSEAS CONSULTANTS	MINISTRY OF INFRASTRUCTURE, THE GOVERNMENT OF MONGOLIA
Drawing title	
Scale	Sheet No.
CONSTRUCTION PLAN (1) (KHUTSAA NARIN BRIDGE) (STAGE-2)	AS SHOWN
E-4 4/5	

Figure 2-2-3-39 Construction Plan of Khutsaa Narin Bridge(1)

CONSTRUCTION PLAN (2/2) (KHUTSAA NARIN BRIDGE)

PLAN 1:500



THE BASIC DESIGN STUDY ON CONSTRUCTION OF EASTERN ARTERIAL ROAD IN MONGOLIA	
JAPAN INTERNATIONAL COOPERATION AGENCY (JICA)	DEPARTMENT OF ROADS,
PACIFIC CONSULTANTS INTERNATIONAL JAPAN OVERSEAS CONSULTANTS	MINISTRY OF INFRASTRUCTURE, THE GOVERNMENT OF MONGOLIA
Drawing title	Scale
CONSTRUCTION PLAN (2) (KHUTSAA NARIN BRIDGE) (STAGE-2)	AS SHOWN
Sheet No.	Sheet No.
E-5	5/5

Figure 2-2-3-40 Construction Plan of Khutsaa Narin Bridge(2)