

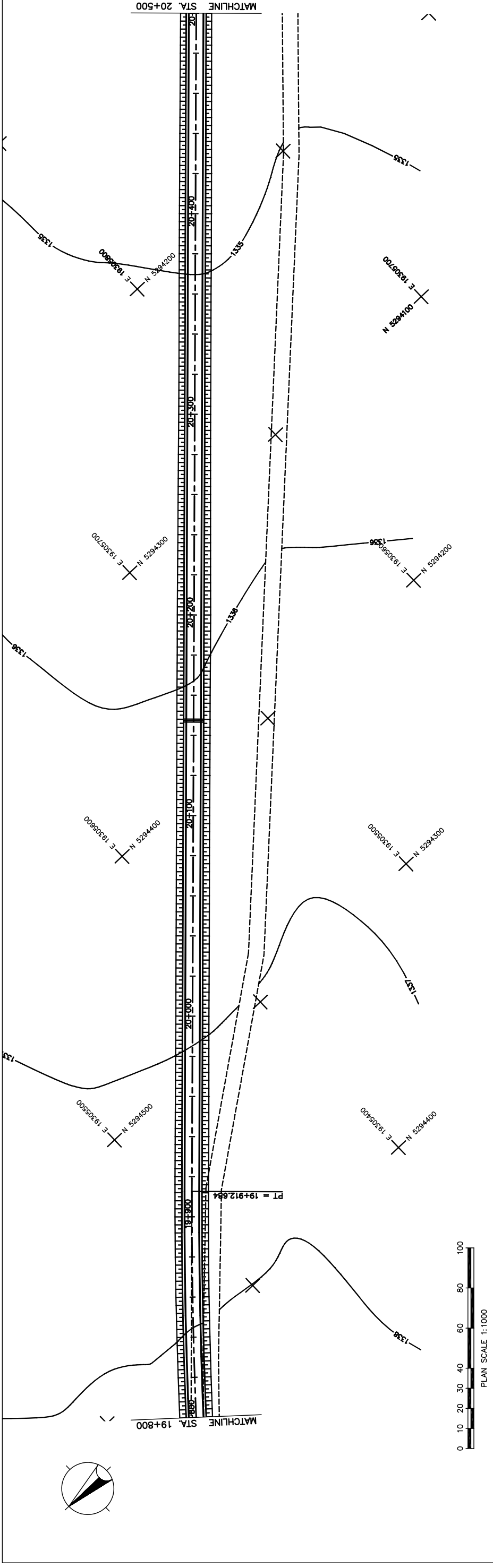
Figure 2-2-3-7 Plan and Profile (Section II New Construction Sta.19+100-Sta.19+800)

THE BASIC DESIGN STUDY ON CONSTRUCTION OF EASTERN ARTERIAL ROAD IN MONGOLIA

JAPAN INTERNATIONAL COOPERATION AGENCY (JICA)
 DEPARTMENT OF ROADS,
 MINISTRY OF INFRASTRUCTURE,
 THE GOVERNMENT OF MONGOLIA

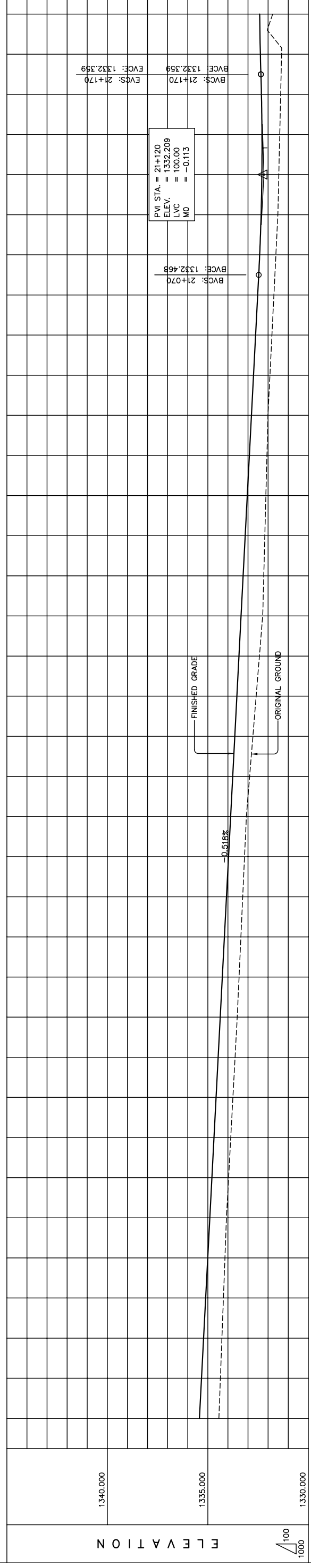
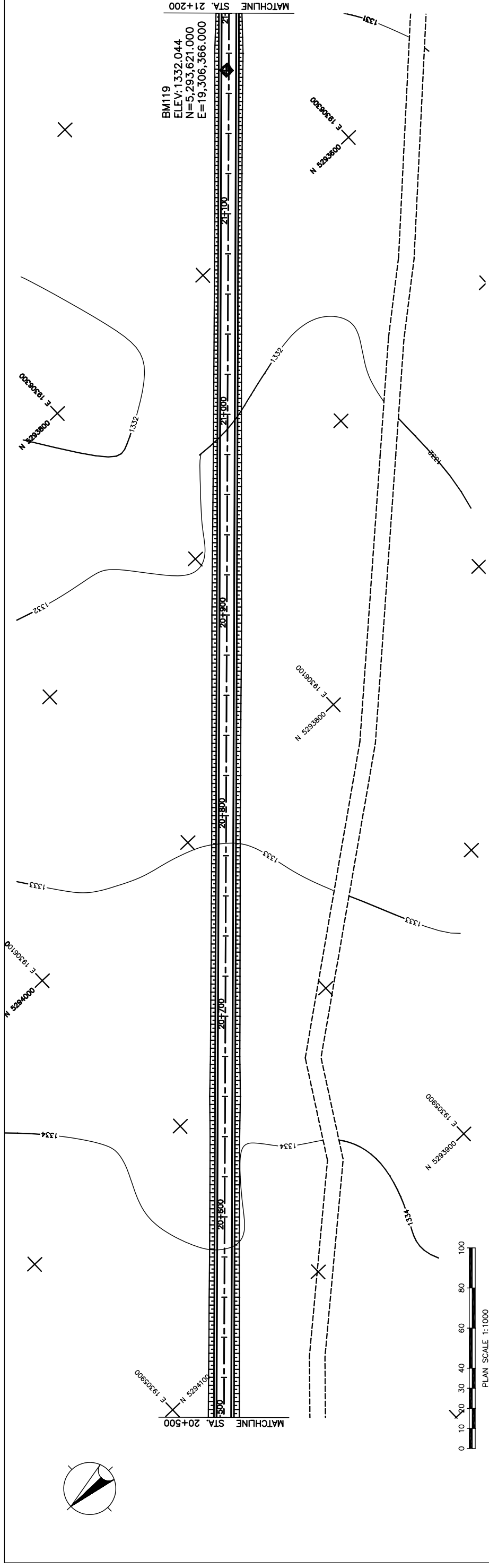
PACIFIC CONSULTANTS INTERNATIONAL
 JAPAN OVERSEAS CONSULTANTS

Scale AS SHOWN
 Sheet No. C-5
 of 21



THE BASIC DESIGN STUDY ON CONSTRUCTION OF EASTERN ARTERIAL ROAD IN MONGOLIA
 DEPARTMENT OF ROADS,
 MINISTRY OF INFRASTRUCTURE,
 THE GOVERNMENT OF MONGOLIA
 JAPAN INTERNATIONAL COOPERATION AGENCY (JICA)
 PACIFIC CONSULTANTS INTERNATIONAL
 JAPAN OVERSEAS CONSULTANTS
 Scale AS SHOWN
 Sheet No. C-6
 6/21
 PLAN AND PROFILE
 (STA.19+800 TO STA.20+500)
 (STAGE-1)

Figure 2-2-3-8 Plan and Profile (Section II New Construction Sta.19+800-Sta.20+500)



STATION	FINISHED GRADE	ORIGINAL GROUND	HORIZONTAL CURVATURE	VERTICAL CURVATURE	SUPERELEVATION
1334.450	1335.420	1334.450			
1334.375	1335.316	1334.375			
1334.299	1335.213	1334.299			
1334.224	1335.109	1334.224			
1334.149	1335.006	1334.149			
1334.073	1334.902	1334.073			
1333.967	1334.799	1333.967			
1333.859	1334.695	1333.859			
1333.752	1334.591	1333.752			
1333.645	1334.488	1333.645			
1333.538	1334.384	1333.538			
1333.446	1334.281	1333.446			
1333.355	1334.177	1333.355			
1333.264	1334.073	1333.264			
1333.173	1333.970	1333.173			
1333.082	1333.866	1333.082			
1332.920	1333.763	1332.920			
1332.758	1333.659	1332.758			
1332.596	1333.556	1332.596			
1332.433	1333.452	1332.433			
1332.271	1333.348	1332.271			
1332.216	1333.245	1332.216			
1332.164	1333.141	1332.164			
1332.112	1333.038	1332.112			
1332.059	1332.934	1332.059			
1332.007	1332.830	1332.007			
1331.909	1332.727	1331.909			
1331.810	1332.623	1331.810			
1331.712	1332.520	1331.712			
1331.613	1332.420	1331.613			
1331.515	1332.349	1331.515			
1331.468	1332.311	1331.468			
1331.422	1332.306	1331.422			
1331.376	1332.333	1331.376			
1331.330	1332.386	1331.330			
1331.275	1332.421	1331.275			

Scale: 1:100.00 m

LVC = 100.00 m

STRAIGHT

$g = -0.518\%$

THE BASIC DESIGN STUDY ON CONSTRUCTION OF EASTERN ARTERIAL ROAD IN MONGOLIA

JAPAN INTERNATIONAL COOPERATION AGENCY (JICA)

DEPARTMENT OF ROADS,
MINISTRY OF INFRASTRUCTURE,
THE GOVERNMENT OF MONGOLIA

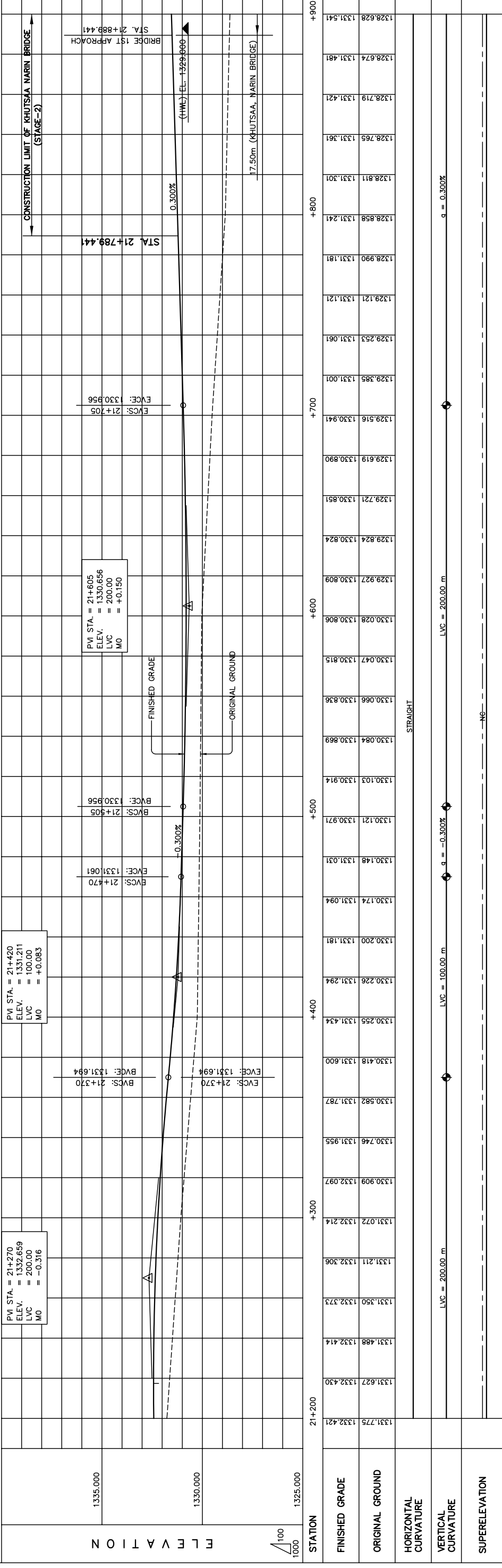
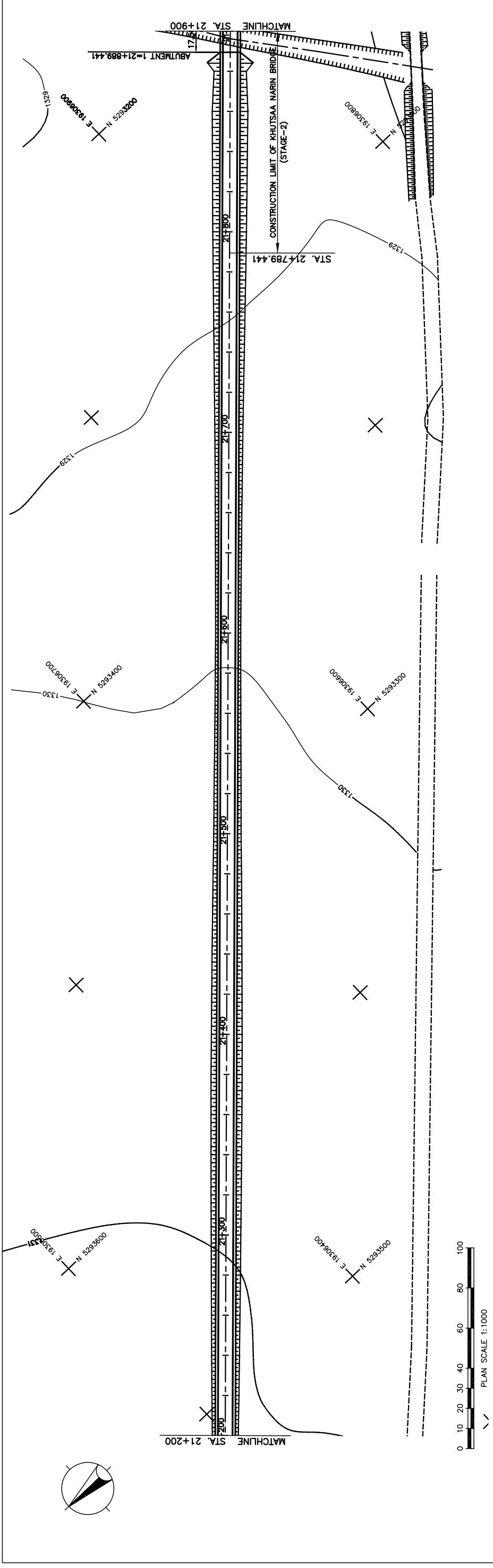
PACIFIC CONSULTANTS INTERNATIONAL
JAPAN OVERSEAS CONSULTANTS

Drawing title
PLAN AND PROFILE
(STA.20+500 TO STA.21+200)
(STAGE-1)

AS SHOWN

Sheet No.
C-7
7/21

Figure 2-2-3-9 Plan and Profile (Section II New Construction Sta.20+500-Sta.21+200)



STATION	FINISHED GRADE	ORIGINAL GROUND	HORIZONTAL CURVATURE	VERTICAL CURVATURE	SUPERELEVATION
1331.775	1332.421	1331.627	1332.414	1331.488	1331.488
1331.750	1332.373	1331.550	1332.306	1331.211	1332.214
1331.725	1332.214	1331.072	1332.097	1330.909	1331.746
1331.700	1331.955	1330.746	1331.787	1330.682	1331.694
1331.675	1331.787	1330.582	1331.594	1330.418	1331.600
1331.650	1331.600	1330.418	1331.434	1330.255	1331.434
1331.625	1331.434	1330.255	1331.294	1330.226	1331.294
1331.600	1331.181	1330.200	1331.181	1330.174	1331.094
1331.575	1331.094	1330.174	1331.031	1330.148	1330.971
1331.550	1331.031	1330.148	1330.914	1330.121	1330.815
1331.525	1330.914	1330.121	1330.806	1330.084	1330.836
1331.500	1330.806	1330.084	1330.809	1330.066	1330.836
1331.475	1330.809	1330.066	1330.824	1330.047	1330.815
1331.450	1330.824	1330.047	1330.851	1330.028	1330.806
1331.425	1330.851	1330.028	1330.890	1330.013	1330.914
1331.400	1330.890	1330.013	1330.941	1330.001	1330.941
1331.375	1330.941	1330.001	1331.001	1329.985	1331.001
1331.350	1331.001	1329.985	1331.061	1329.958	1331.061
1331.325	1331.061	1329.958	1331.121	1329.927	1331.121
1331.300	1331.121	1329.927	1331.181	1329.896	1331.181
1331.275	1331.181	1329.896	1331.241	1329.858	1331.241
1331.250	1331.241	1329.858	1331.301	1329.811	1331.301
1331.225	1331.301	1329.811	1331.361	1329.765	1331.361
1331.200	1331.361	1329.765	1331.421	1329.719	1331.421
1331.175	1331.421	1329.719	1331.481	1329.674	1331.481
1331.150	1331.481	1329.674	1331.541	1329.628	1331.541

Figure 2-2-3-10 Plan and Profile (Section II New Construction Sta.21+200-Sta.21+900)

THE BASIC DESIGN STUDY ON CONSTRUCTION OF EASTERN ARTERIAL ROAD IN MONGOLIA

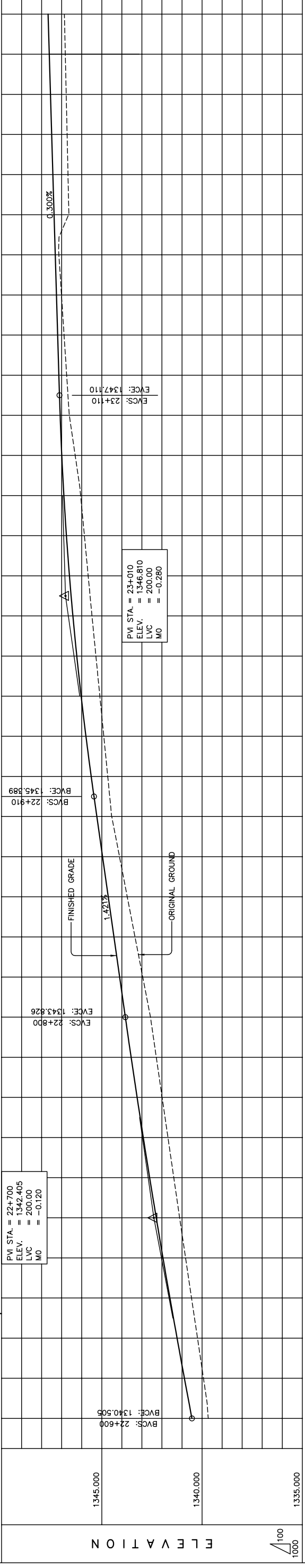
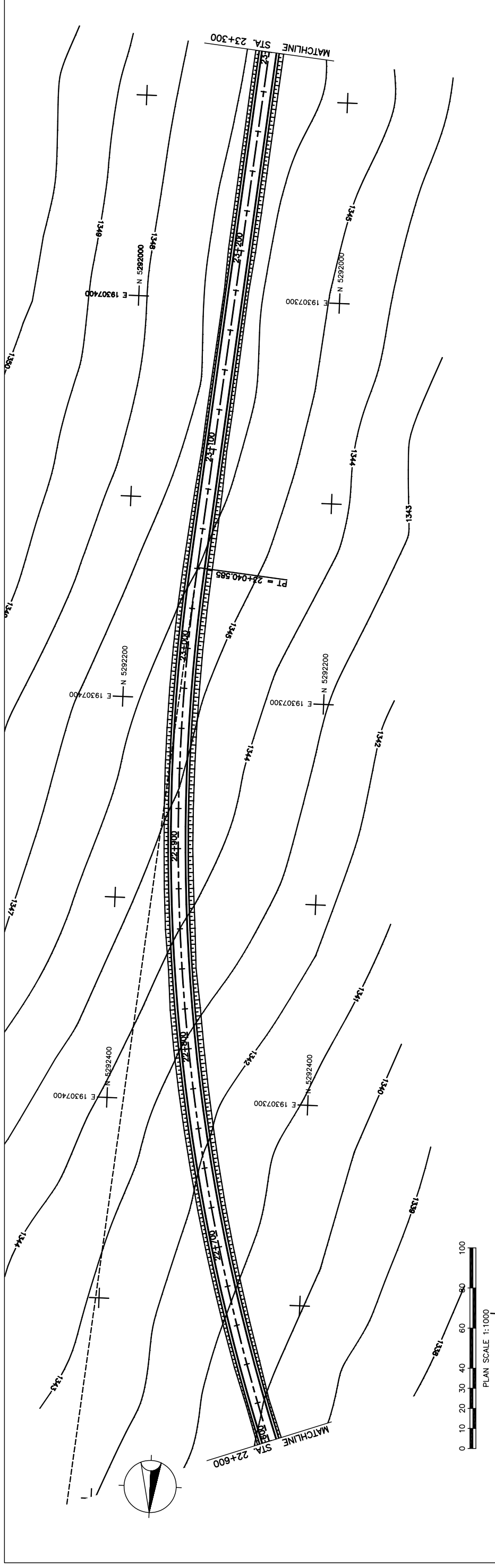
JAPAN INTERNATIONAL COOPERATION AGENCY (JICA)
 DEPARTMENT OF ROADS,
 MINISTRY OF INFRASTRUCTURE,
 THE GOVERNMENT OF MONGOLIA

PACIFIC CONSULTANTS INTERNATIONAL
 JAPAN OVERSEAS CONSULTANTS

Scale AS SHOWN

Sheet No. C-8 of 21

PLAN AND PROFILE
 (STA.21+200 TO STA.21+900)
 (STAGE-1)



STATION	FINISHED GRADE	ORIGINAL GROUND	HORIZONTAL CURVATURE	VERTICAL CURVATURE	SUPERELEVATION
22+600	1339.687	1340.505			
	1340.822	1341.948			
	1340.524	1341.602			
	1340.227	1341.246			
	1341.410	1342.613			
	1341.701	1342.930			
	1341.991	1343.238			
	1342.282	1343.537			
	1342.573	1343.826			
	1342.958	1344.110			
	1343.344	1344.394			
	1343.731	1344.678			
	1344.117	1344.963			
	1344.503	1345.247			
	1344.703	1345.528			
	1344.900	1345.790			
	1345.096	1346.029			
	1345.293	1346.246			
	1345.490	1346.441			
	1345.678	1346.613			
	1345.867	1346.763			
	1346.056	1346.890			
	1346.327	1346.995			
	1346.619	1347.077			
	1346.751	1347.140			
	1346.881	1347.200			
	1347.011	1347.260			
	1347.140	1347.320			
	1346.577	1347.380			
	1346.686	1347.440			
	1346.730	1347.500			
	1346.775	1347.560			
	1346.820	1347.620			
	1346.864	1347.680			

STRAIGHT

PT

LVC = 200.00 m

g = 0.300%

g = 1.421%

g = 3.10%

+032.480

+056.794

+041.108

+072.480

THE BASIC DESIGN STUDY ON CONSTRUCTION OF EASTERN ARTERIAL ROAD IN MONGOLIA

JAPAN INTERNATIONAL COOPERATION AGENCY (JICA)

DEPARTMENT OF ROADS,
MINISTRY OF INFRASTRUCTURE,
THE GOVERNMENT OF MONGOLIA

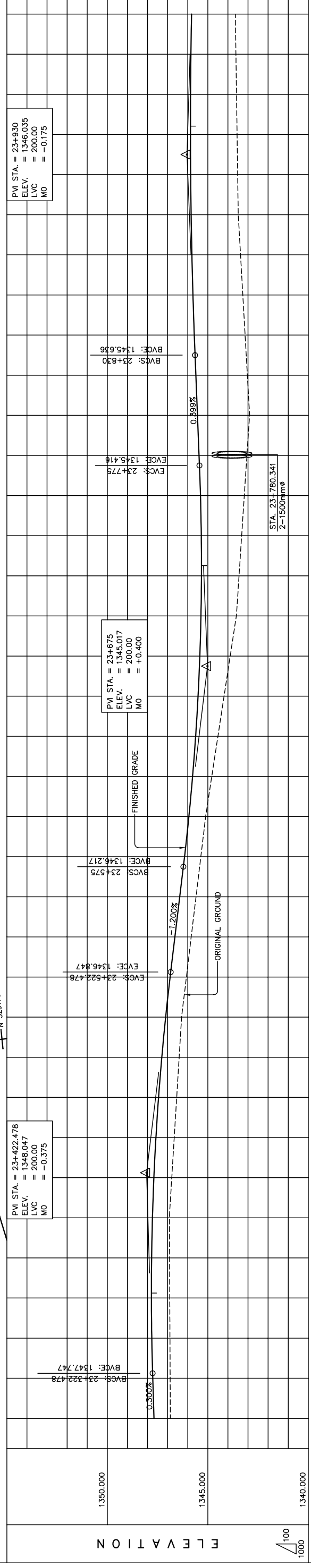
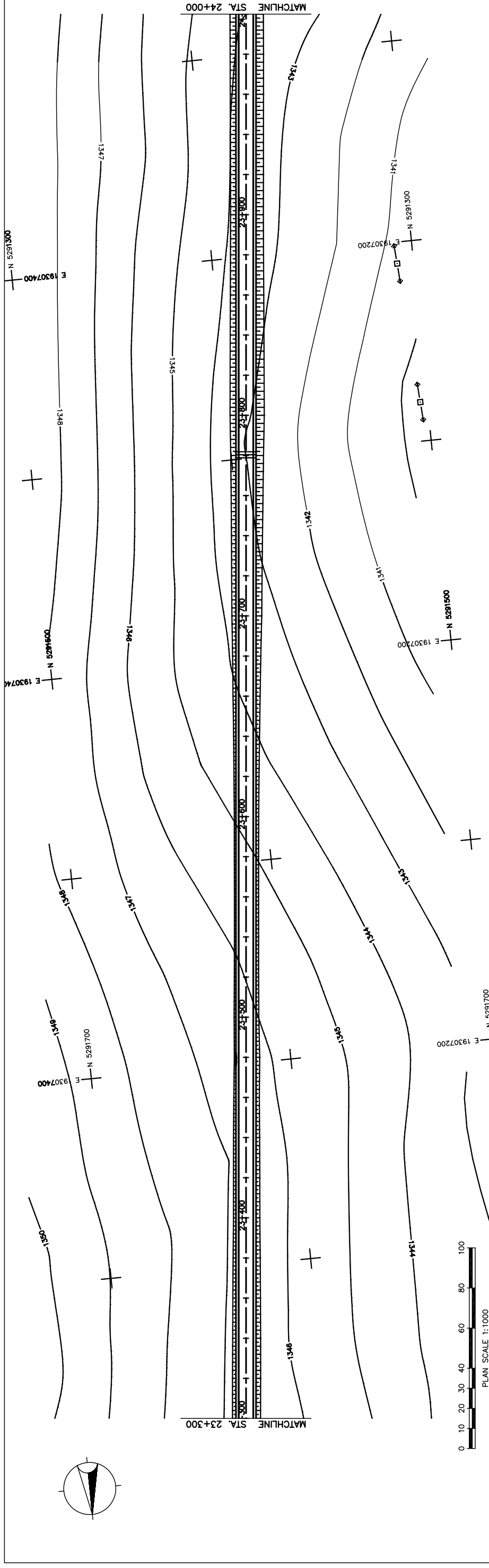
PACIFIC CONSULTANTS INTERNATIONAL
JAPAN OVERSEAS CONSULTANTS

Scale AS SHOWN

Sheet No. C-10
10/21

PLAN AND PROFILE
(STA.22+600 TO STA.23+300)
(STAGE-1)

Figure 2-2-3-12 Plan and Profile (Section II New Construction Sta.22+600-Sta.23+300)



STATION	FINISHED GRADE	ORIGINAL GROUND	HORIZONTAL CURVATURE	VERTICAL CURVATURE	SUPERELEVATION
23+300	1346.864	1347.680			
	1346.875	1347.740			
	1346.885	1347.788			
	1346.895	1347.807			
	1346.905	1347.796			
	1346.915	1347.754			
	1346.794	1347.683			
	1346.672	1347.582			
	1346.549	1347.451			
	1346.427	1347.289			
	1346.304	1347.098			
	1346.066	1346.877			
	1345.827	1346.637			
	1345.587	1346.397			
	1345.348	1346.158			
	1345.108	1345.942			
	1344.804	1345.758			
	1344.498	1345.606			
	1344.192	1345.486			
	1343.887	1345.398			
	1343.581	1345.342			
	1343.447	1345.318			
	1343.317	1345.325			
	1343.186	1345.365			
	1343.055	1345.436			
	1342.924	1345.516			
	1343.033	1345.596			
	1343.146	1345.674			
	1343.260	1345.740			
	1343.373	1345.792			
	1343.486	1345.830			
	1343.516	1345.854			
	1343.545	1345.863			
	1343.573	1345.859			
	1343.602	1345.841			
	1343.631	1345.809			

STRAIGHT

LVC = 200.00 m

g = 0.300%

LVC = 200.00 m

g = -1.200%

LVC = 200.00 m

g = 0.389%

LVC = 200.00 m

Scale

AS SHOWN

Scale

Sheet No.

C-11

11/21

THE BASIC DESIGN STUDY ON CONSTRUCTION OF EASTERN ARTERIAL ROAD IN MONGOLIA

JAPAN INTERNATIONAL COOPERATION AGENCY (JICA)

DEPARTMENT OF ROADS,

MINISTRY OF INFRASTRUCTURE,

THE GOVERNMENT OF MONGOLIA

PACIFIC CONSULTANTS INTERNATIONAL

JAPAN OVERSEAS CONSULTANTS

Drawing title

PLAN AND PROFILE

(STA.23+300 TO STA.24+000)

(STAGE-1)

Figure 2-2-3-13 Plan and Profile (Section II New Construction Sta.23+300-Sta.24+000)