



14+700

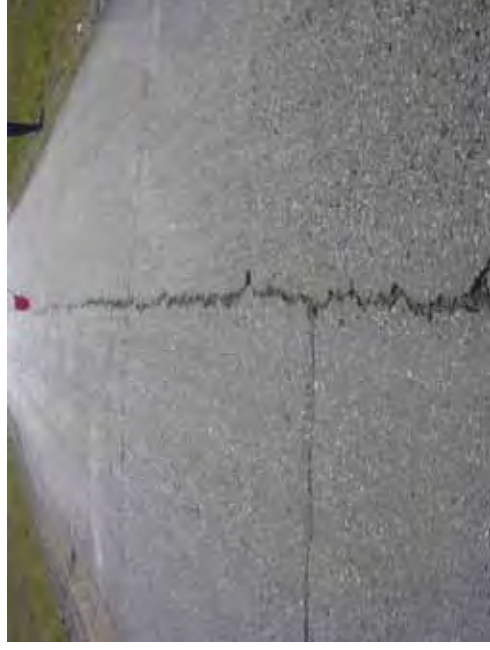
COMMENT	Volume of crackle: less Width of crackle: 05-20mm 342 / 2800 * 100 = 12.21%	Volume of crackle: less Width of crackle: 05-20mm 329 / 2800 * 100 = 11.75%	Volume of crackle: less Width of crackle: 05-25m 302 / 2800 * 100 = 10.79%	Volume of crackle: less Width of crackle: 05-30mm 288 / 2800 * 100 = 10.29%
SUBJECTIVE EVALUATION	4	4	4	4
OBJECTIVE EVALUATION	b, d	b	b	b
TYPE OF PAVEMENT REHABILITATION	C	C	C	C



DSC01218



DSC01219



DSC01220



DSC01221

THE BASIC DESIGN STUDY ON CONSTRUCTION OF EASTERN ARTERIAL ROAD IN MONGOLIA

JAPAN INTERNATIONAL COOPERATION AGENCY (JICA)

DEPARTMENT OF ROADS,  
MINISTRY OF INFRASTRUCTURE,  
THE GOVERNMENT OF MONGOLIA

PACIFIC CONSULTANTS INTERNATIONAL  
JAPAN OVERSEAS CONSULTANTS

Drawing title

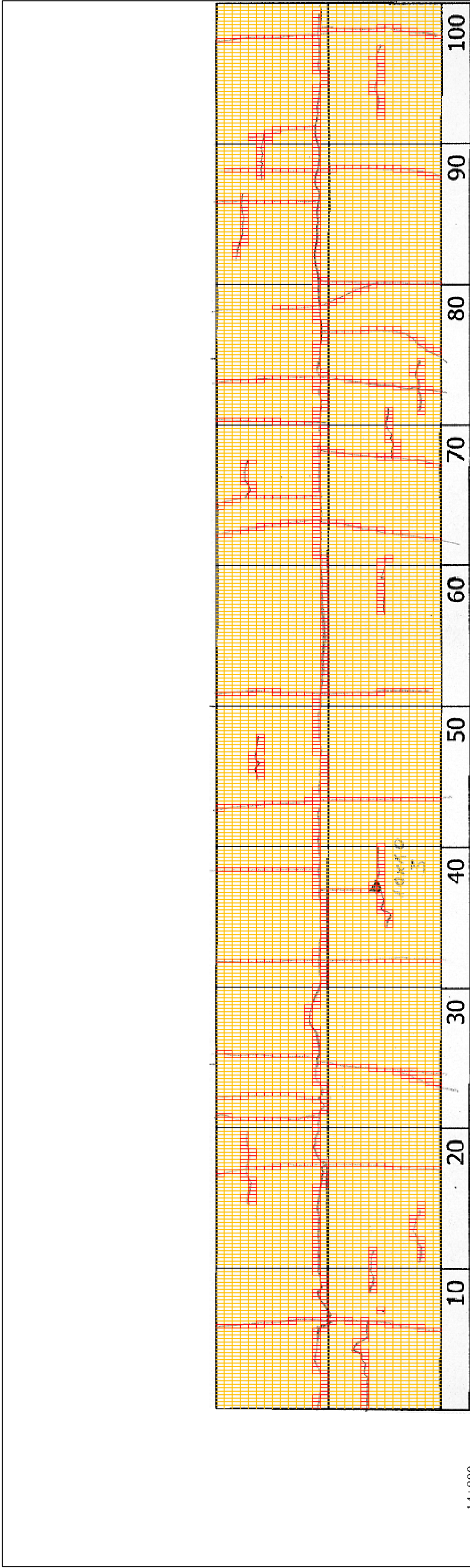
14800-14900

No.

D-146

Scale

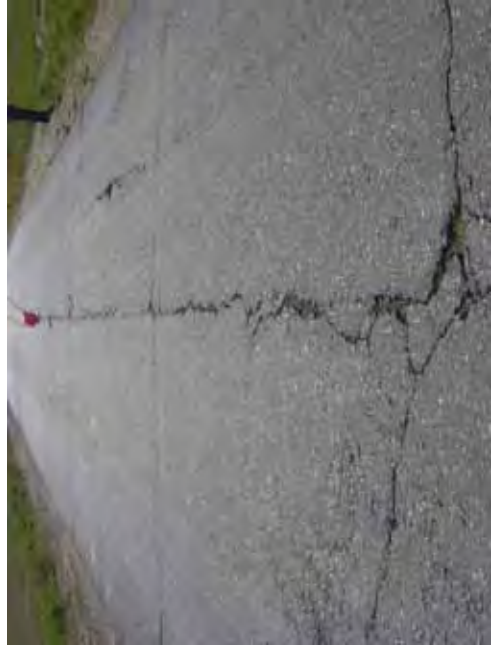




14+800	Volume of crackle: less Width of crackle: 05-35mm 317 / 2800 * 100 = 11.32%	Volume of crackle: less Width of crackle: 05-40mm 241 / 2800 * 100 = %	Volume of crackle: less Width of crackle: 05-30mm 316 / 2800 * 100 = 11.29%	Volume of crackle: less Width of crackle: 05-40mm 299 / 2800 * 100 = 10.68%
COMMENT				
SUBJECTIVE EVALUATION	4	4	4	4
OBJECTIVE EVALUATION	b, d	b, c, d	b	b
TYPE OF PAVEMENT REHABILITATION	C	C	C	C



DSC01222



DSC01223



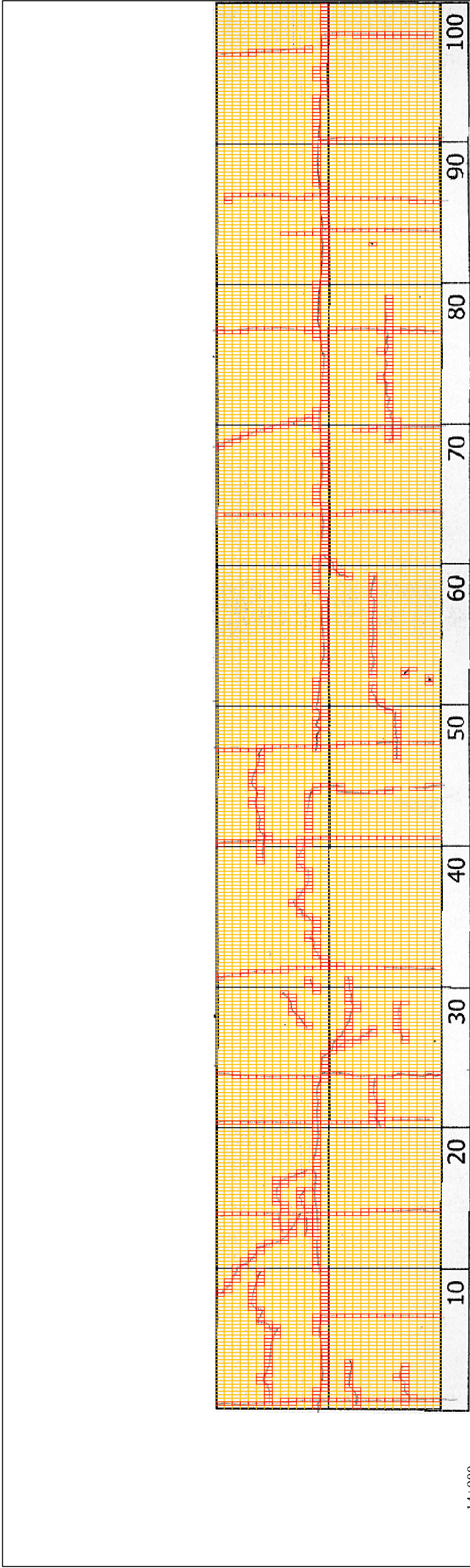
DSC01224



DSC01225

THE BASIC DESIGN STUDY ON CONSTRUCTION OF EASTERN ARTERIAL ROAD IN MONGOLIA	
JAPAN INTERNATIONAL COOPERATION AGENCY (JICA)	DEPARTMENT OF ROADS, MINISTRY OF INFRASTRUCTURE, THE GOVERNMENT OF MONGOLIA
PACIFIC CONSULTANTS INTERNATIONAL JAPAN OVERSEAS CONSULTANTS	
Drawing title	Scale
14900-15000	
No.	No.
	D-147





14+900

COMMENT	Volume of crackle: less Width of crackle: 05-20mm 401 / 2800 x 100 = 14.32%	Volume of crackle: less Width of crackle: 05-30mm 318 / 2800 x 100 = 11.36%	Volume of crackle: less Width of crackle: 05-30mm 254 / 2800 x 100 = 9.07%	Volume of crackle: less Width of crackle: 05-20mm 267 / 2800 x 100 = 9.54%
SUBJECTIVE EVALUATION	4	4	4	4
OBJECTIVE EVALUATION	b, d	b, d	b	b, d
TYPE OF PAVEMENT REHABILITATION	C	C	C	C



DSC01226



DSC01227



DSC01228



DSC01229

THE BASIC DESIGN STUDY ON CONSTRUCTION OF EASTERN ARTERIAL ROAD IN MONGOLIA

JAPAN INTERNATIONAL COOPERATION AGENCY (JICA)  
MINISTRY OF INFRASTRUCTURE,  
THE GOVERNMENT OF MONGOLIA

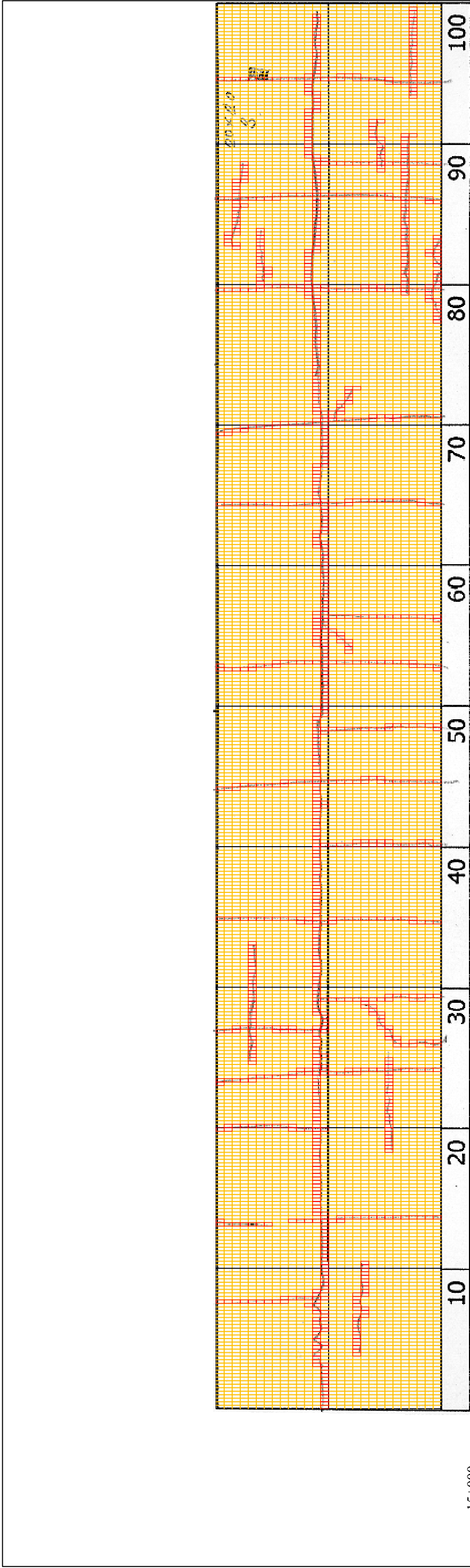
PACIFIC CONSULTANTS INTERNATIONAL  
JAPAN OVERSEAS CONSULTANTS

Drawing title  
15000-15100

No.  
D-148

Scale





15+000

COMMENT	Volume of crackle: less Width of crackle: 05-30mm 260 / 2800 x 100 = 9.29%	Volume of crackle: less Width of crackle: 05-20mm 246 / 2800 x 100 = 8.79%	Volume of crackle: less Width of crackle: 05-30mm 371 / 2800 x 100 = 13.25%
SUBJECTIVE EVALUATION	3	3	3
OBJECTIVE EVALUATION	b, d	b	b, c, d
TYPE OF PAVEMENT REHABILITATION	C	C	C



DSC01230



DSC01231



DSC01232



DSC01233

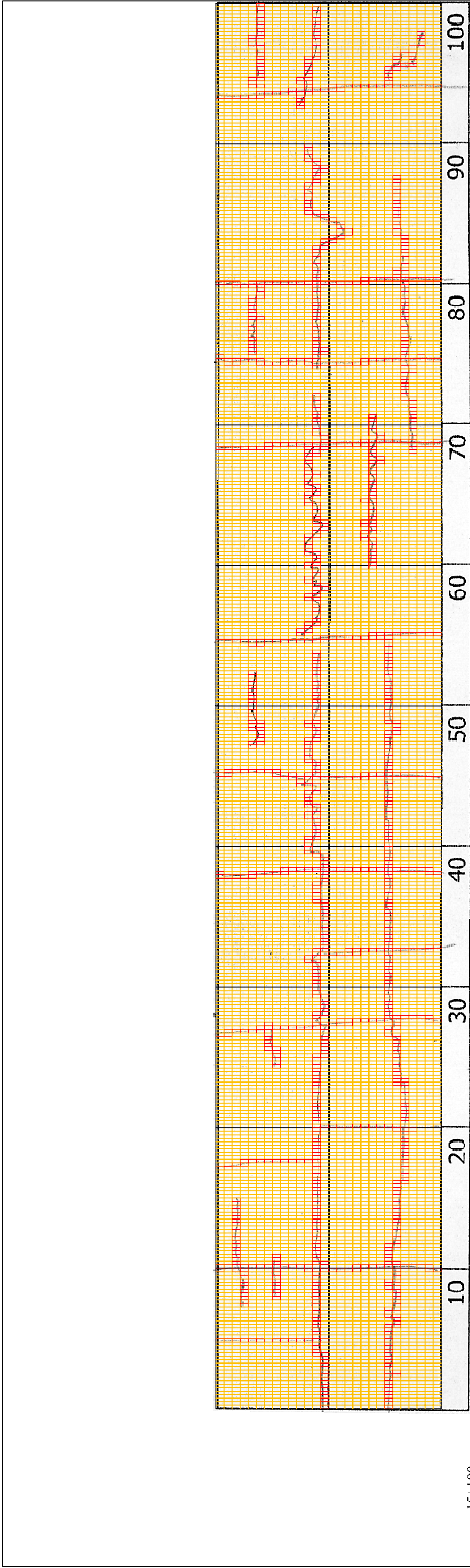
THE BASIC DESIGN STUDY ON CONSTRUCTION OF EASTERN ARTERIAL ROAD IN MONGOLIA

JAPAN INTERNATIONAL COOPERATION AGENCY (JICA)  
MINISTRY OF INFRASTRUCTURE,  
THE GOVERNMENT OF MONGOLIA

PACIFIC CONSULTANTS INTERNATIONAL  
JAPAN OVERSEAS CONSULTANTS

Drawing title: 15100-15200  
Scale: No. D-149





15+100

COMMENT	Volume of crackle: less Width of crackle: 05-40mm 332 / 2800 x 100 = 11.86%	Volume of crackle: less Width of crackle: 05-50mm 364 / 2800 x 100 = 13.00%	Volume of crackle: less Width of crackle: 05-20mm 322 / 2800 x 100 = 11.50%	Volume of crackle: less Width of crackle: 05-30mm 296 / 2800 x 100 = 10.57%
SUBJECTIVE EVALUATION	4	4	4	4
OBJECTIVE EVALUATION	b, d	b, d	b, d	b, d
TYPE OF PAVEMENT REHABILITATION	C	C	C	C



DSC01234



DSC01235



DSC01236



DSC01237

THE BASIC DESIGN STUDY ON CONSTRUCTION OF EASTERN ARTERIAL ROAD IN MONGOLIA	
JAPAN INTERNATIONAL COOPERATION AGENCY (JICA)	DEPARTMENT OF ROADS, MINISTRY OF INFRASTRUCTURE, THE GOVERNMENT OF MONGOLIA
PACIFIC CONSULTANTS INTERNATIONAL JAPAN OVERSEAS CONSULTANTS	
Drawing title	Scale
152004-15300	
No.	No.
	D-150