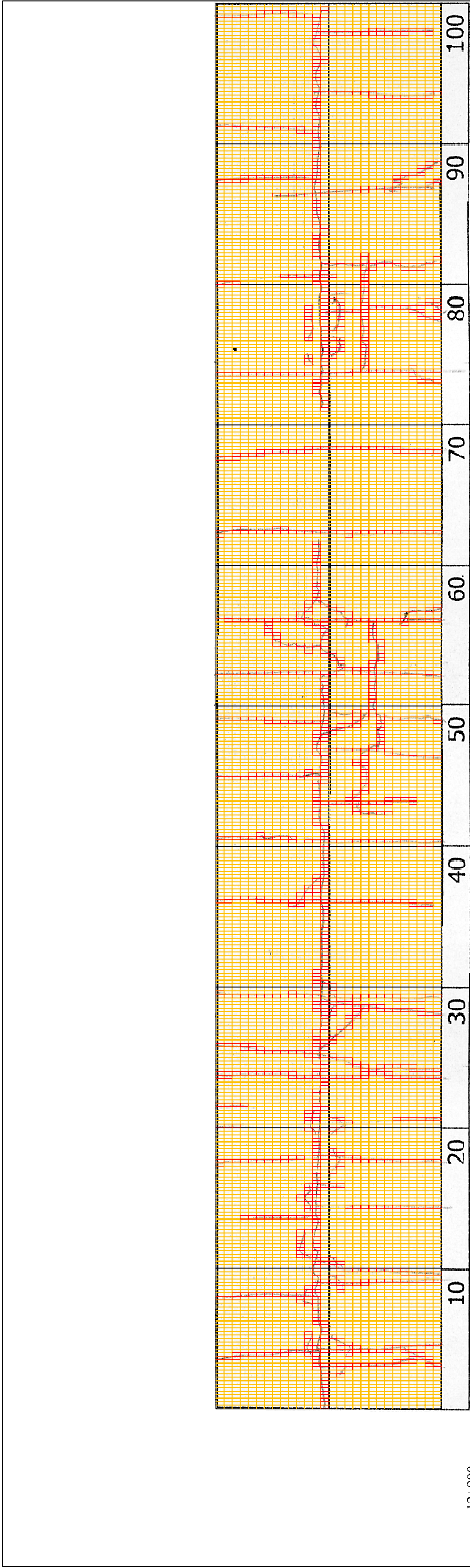


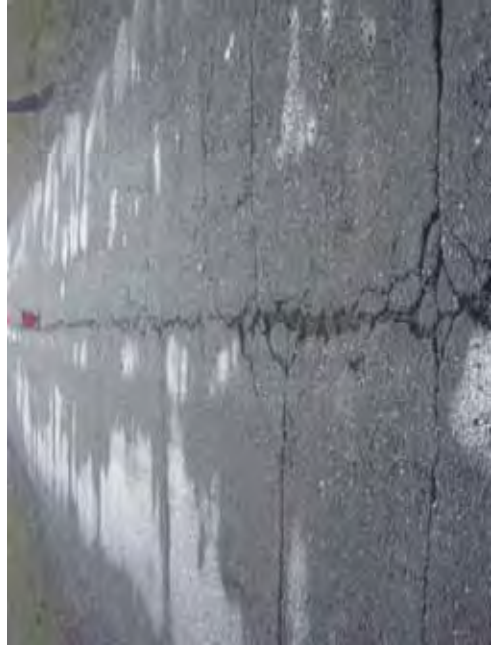
12+700													
COMMENT	Volume of crackle: medium Width of crackle: 05-30mm 344 / 2800 * 100 = 12.29%	Volume of crackle: less Width of crackle: 5-20mm 277 / 2800 * 100 = 9.89%	Volume of crackle: medium Width of crackle: 10-100mm There are the most crackle in central axis of the road. 230 / 2800 * 100 = 8.21%	Volume of crackle: less Width of crackle: 10-100mm There are the most crackle in central axis of the road. 312 / 2800 * 100 = 11.14%									
SUBJECTIVE EVALUATION	3	3	3	3									
OBJECTIVE EVALUATION	b	b, c	b, c	b									
TYPE OF PAVEMENT REHABILITATION	B	B	B	B									
THE BASIC DESIGN STUDY ON CONSTRUCTION OF EASTERN ARTERIAL ROAD IN MONGOLIA JAPAN INTERNATIONAL COOPERATION AGENCY (JICA) DEPARTMENT OF ROADS, MINISTRY OF INFRASTRUCTURE, THE GOVERNMENT OF MONGOLIA PACIFIC CONSULTANTS INTERNATIONAL JAPAN OVERSEAS CONSULTANTS Drawing title: 12800-12900 Scale: No. D-126													

12+800											
COMMENT	Volume of crackle: less Width of crackle: 05-15mm 329 / 2800 * 100 = 11.75%	Volume of crackle: less Width of crackle: 05-10mm 225 / 2800 * 100 = 804%	Volume of crackle: less Width of crackle: 05-25mm 257 / 2800 * 100 = 9.18%	Volume of crackle: less Width of crackle: 05-20mm There is a pothole in + 12992 metre. (150*250*30mm) 244 / 2800 * 100 = 8.71%							Volume of crackle: less Width of crackle: 05-20mm There is a pothole in + 12992 metre. (150*250*30mm) 244 / 2800 * 100 = 8.71%
SUBJECTIVE EVALUATION	3	3	3	3							3
OBJECTIVE EVALUATION	b	b	b	b							b, c
TYPE OF PAVEMENT REHABILITATION	B	B	B	B							B
		 DSC01134		 DSC01135		 DSC01136		 DSC01137			
THE BASIC DESIGN STUDY ON CONSTRUCTION OF EASTERN ARTERIAL ROAD IN MONGOLIA JAPAN INTERNATIONAL COOPERATION AGENCY (JICA) DEPARTMENT OF ROADS, MINISTRY OF INFRASTRUCTURE, THE GOVERNMENT OF MONGOLIA PACIFIC CONSULTANTS INTERNATIONAL JAPAN OVERSEAS CONSULTANTS Drawing title: 12900-13000 Scale: No. D-127											



12+900

COMMENT	Volume of crackle: medium Width of crackle: 05-100mm There are the most crackle in central axis of the road. 410 / 2800 * 100 = 14.64%	Volume of crackle: medium Width of crackle: 05-100mm There are the most crackle in central axis of the road. 403 / 2800 * 100 = 14.39%	Volume of crackle: medium Width of crackle: 05-80mm 300 / 2800 * 100 = 10.71%	Volume of crackle: less Width of crackle: 05-30mm 340 / 2800 * 100 = 12.14%
SUBJECTIVE EVALUATION	3	3	3	3
OBJECTIVE EVALUATION	b	b	b	b
TYPE OF PAVEMENT REHABILITATION	B	B	B	B



DSC01138



DSC01139

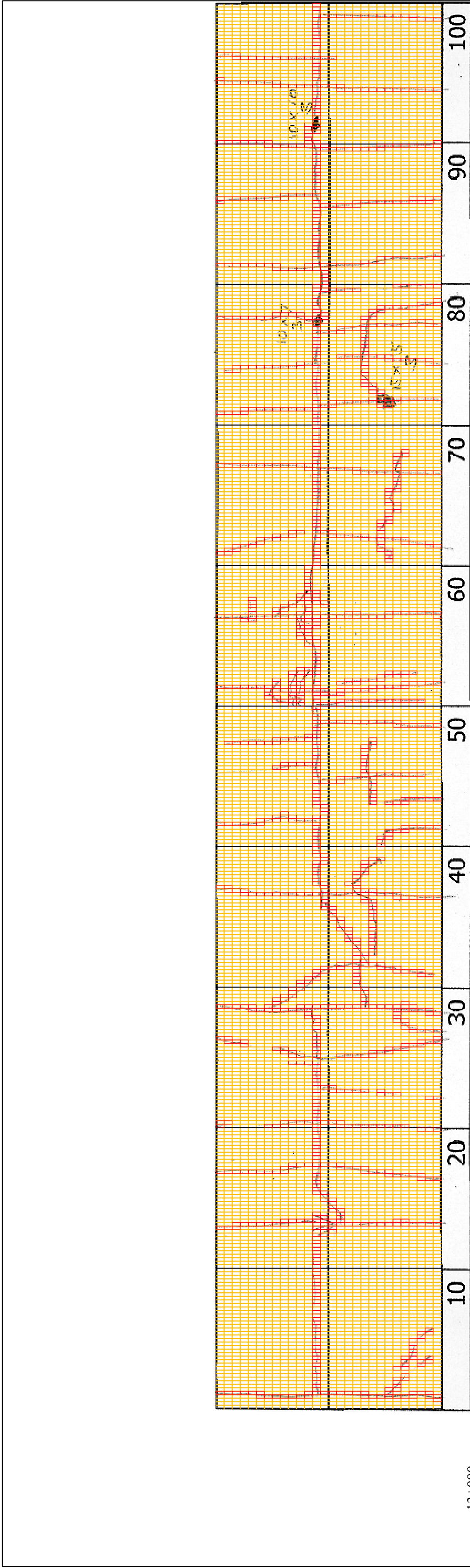


DSC01140



DSC01141

THE BASIC DESIGN STUDY ON CONSTRUCTION OF EASTERN ARTERIAL ROAD IN MONGOLIA	
JAPAN INTERNATIONAL COOPERATION AGENCY (JICA)	DEPARTMENT OF ROADS, MINISTRY OF INFRASTRUCTURE, THE GOVERNMENT OF MONGOLIA
PACIFIC CONSULTANTS INTERNATIONAL JAPAN OVERSEAS CONSULTANTS	
Drawing title	Scale
13000-13100	
No.	No.
	D-128

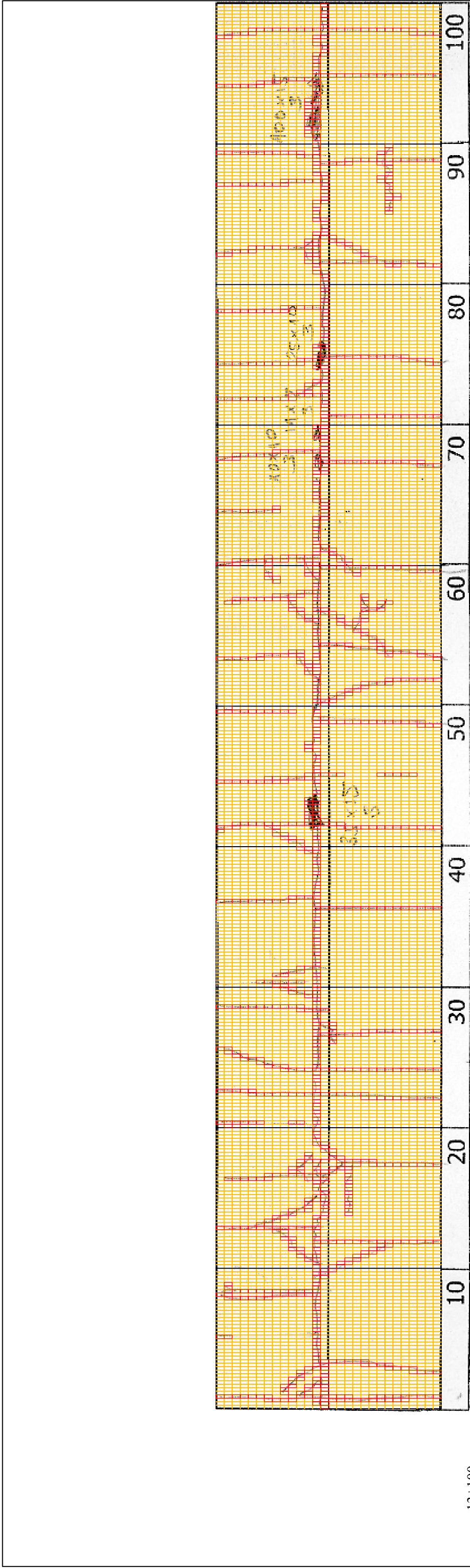


13+000	10	20	30	40	50	60	70	80	90	100
COMMENT	Volume of crackle: less Width of crackle: 05-20mm 278 / 2800 * 100 = 9.93%									
SUBJECTIVE EVALUATION	Volume of crackle: medium Width of crackle: 05-50mm There are the most crackle in central axis of the road. 436 / 2800 * 100 = 15.57%									
OBJECTIVE EVALUATION	Volume of crackle: medium Width of crackle: 05-30mm 335 / 2800 * 100 = 11.96%									
TYPE OF PAVEMENT REHABILITATION	3									
	b									
	b, c									
	B									



THE BASIC DESIGN STUDY ON CONSTRUCTION OF EASTERN ARTERIAL ROAD IN MONGOLIA

JAPAN INTERNATIONAL COOPERATION AGENCY (JICA)	DEPARTMENT OF ROADS, MINISTRY OF INFRASTRUCTURE, THE GOVERNMENT OF MONGOLIA
PACIFIC CONSULTANTS INTERNATIONAL JAPAN OVERSEAS CONSULTANTS	
Drawing title 13100-13200	Scale No. D-129



13+100

COMMENT	Volume of crackle: medium Width of crackle: 05-30mm There are the most crackle in central axis of the road. 414 / 2800 * 100 = 14.79%	Volume of crackle: most Width of crackle: 05-80mm There are the most crackle in central axis of the road. 296 / 2800 * 100 = %	Volume of crackle: medium Width of crackle: 05-50mm There are the most crackle in central axis of the road. 394 / 2800 * 100 = %	Volume of crackle: medium Width of crackle: 05-80mm There are the most crackle in central axis of the road. 313 / 2800 * 100 = 11.18%
SUBJECTIVE EVALUATION	3	3	3	3
OBJECTIVE EVALUATION	b	b, c	b, c	b, c
TYPE OF PAVEMENT REHABILITATION	B	B	B	B



DSC01146



DSC01147



DSC01148



DSC01149

THE BASIC DESIGN STUDY ON CONSTRUCTION OF EASTERN ARTERIAL ROAD IN MONGOLIA

JAPAN INTERNATIONAL COOPERATION AGENCY (JICA)

DEPARTMENT OF ROADS,  
MINISTRY OF INFRASTRUCTURE,  
THE GOVERNMENT OF MONGOLIA

PACIFIC CONSULTANTS INTERNATIONAL  
JAPAN OVERSEAS CONSULTANTS

Drawing title  
13.200-1.13300

Scale  
No.  
D-130