

10+500

COMMENT	Volume of crackle: less Width of crackle: 05-90mm 246 / 2800 * 100 = 8.79%	Volume of crackle: less Width of crackle: 05-20mm 288 / 2800 * 100 = 10.29%	Volume of crackle: less Width of crackle: 05-15mm 307 / 2800 * 100 = 10.96%	Volume of crackle: less Width of crackle: 05-10mm 232 / 2800 * 100 = 8.29%
SUBJECTIVE EVALUATION	3	3	3	3
OBJECTIVE EVALUATION	b	b, c	b, c	b, c
TYPE OF PAVEMENT REHABILITATION	B	B	B	B



DSC01035



DSC01036



DSC01037



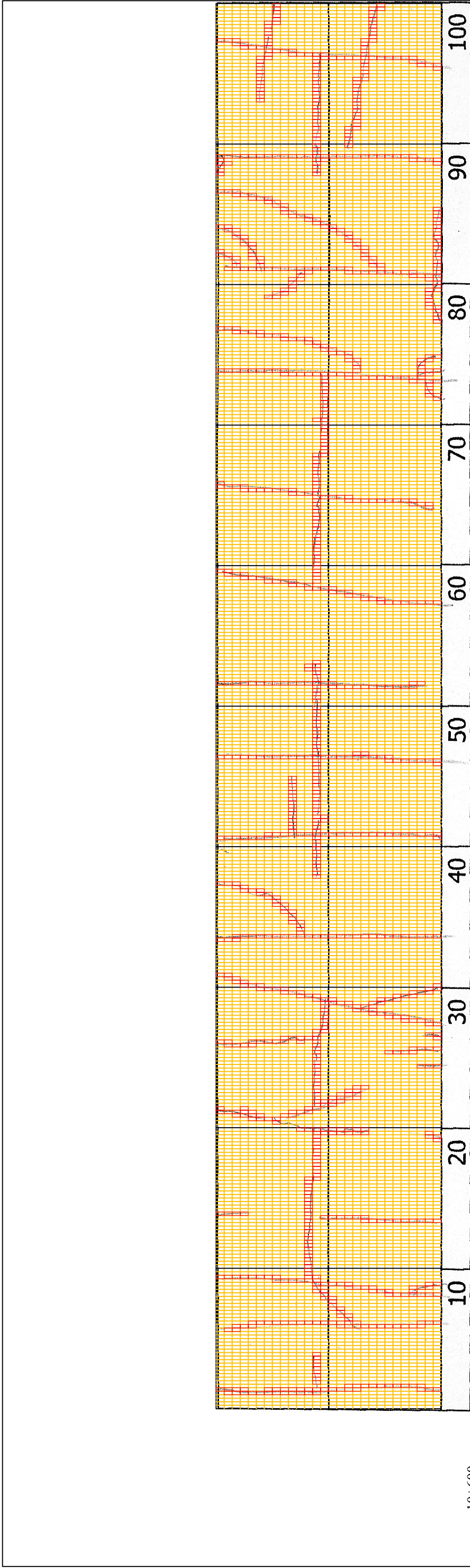
DSC01038

THE BASIC DESIGN STUDY ON CONSTRUCTION OF EASTERN ARTERIAL ROAD IN MONGOLIA

JAPAN INTERNATIONAL COOPERATION AGENCY (JICA)
MINISTRY OF INFRASTRUCTURE,
THE GOVERNMENT OF MONGOLIA

PACIFIC CONSULTANTS INTERNATIONAL
JAPAN OVERSEAS CONSULTANTS

Drawing title: 10600-10700
Scale: No. D-104

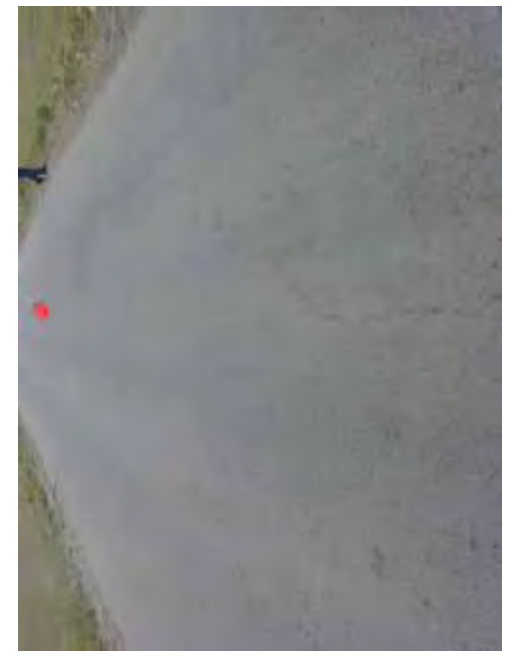


10+600

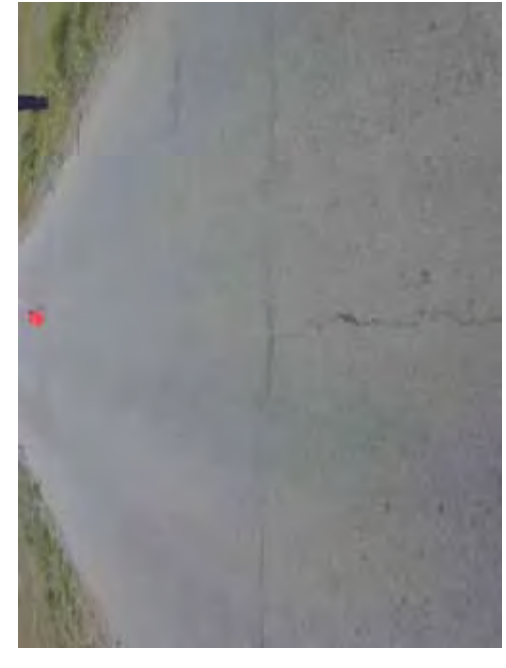
COMMENT	Volume of crackle: less Width of crackle: 05-20mm 286 / 2800 * 100 = 10.21%	Volume of crackle: less Width of crackle: 05-20mm 226 / 2800 * 100 = 8.07%	Volume of crackle: less Width of crackle: 05-15mm 346 / 2800 * 100 = 12.36%
SUBJECTIVE EVALUATION	3	3	3
OBJECTIVE EVALUATION	b	b	b
TYPE OF PAVEMENT REHABILITATION	B	B	B



DSC01039



DSC01040



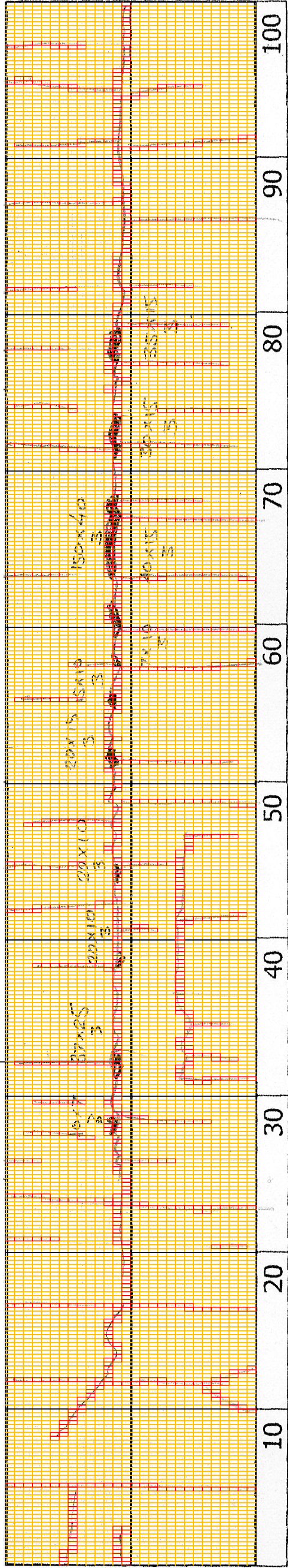
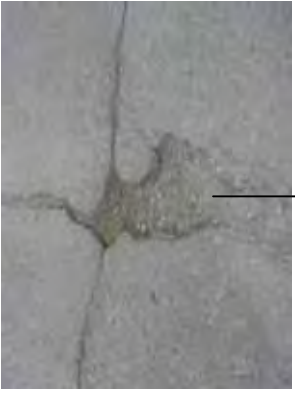
DSC01041



DSC01042

THE BASIC DESIGN STUDY ON CONSTRUCTION OF EASTERN ARTERIAL ROAD IN MONGOLIA	
JAPAN INTERNATIONAL COOPERATION AGENCY (JICA)	DEPARTMENT OF ROADS, MINISTRY OF INFRASTRUCTURE, THE GOVERNMENT OF MONGOLIA
PACIFIC CONSULTANTS INTERNATIONAL JAPAN OVERSEAS CONSULTANTS	
Drawing title 10700-10800	Scale
	No. D-105

DSC01045

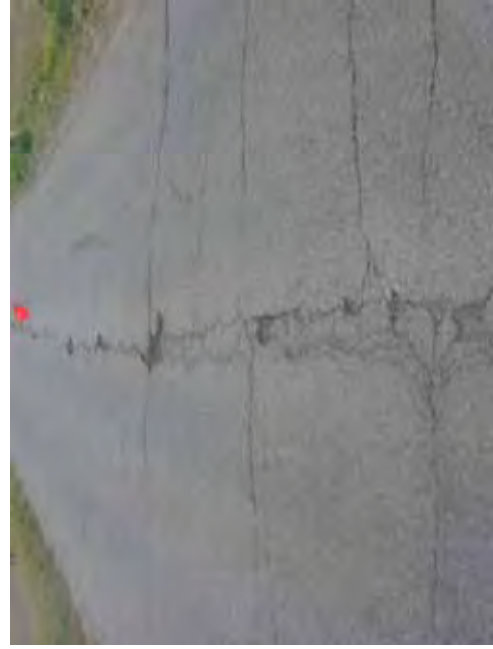


10+700

COMMENT	Volume of crackle: less Width of crackle: 05-25mm 260 / 2800 * 100 = 9.29%	Volume of crackle: most Width of crackle: 10-130mm There is a pothole in + 10830 metre. (370*250*30mm) There are the most crackle in central axis of the road. 338 / 2800 * 100 = 12.07%	Volume of crackle: most Width of crackle: 05-30mm There are the most crackle in central axis of the road. 287 / 2800 * 100 = 10.25%	Volume of crackle: most Width of crackle: 05-60mm There are the most crackle in central axis of the road. 264 / 2800 * 100 = 9.43%
SUBJECTIVE EVALUATION	3	3	3	3
OBJECTIVE EVALUATION	b	b, c	b, c	b, c
TYPE OF PAVEMENT REHABILITATION	B	B	B	B



DSC01043



DSC01044



DSC01046



DSC01047

THE BASIC DESIGN STUDY ON CONSTRUCTION OF EASTERN ARTERIAL ROAD IN MONGOLIA

JAPAN INTERNATIONAL COOPERATION AGENCY (JICA)

DEPARTMENT OF ROADS,
MINISTRY OF INFRASTRUCTURE,
THE GOVERNMENT OF MONGOLIA

PACIFIC CONSULTANTS INTERNATIONAL
JAPAN OVERSEAS CONSULTANTS

Drawing title

10800-10900

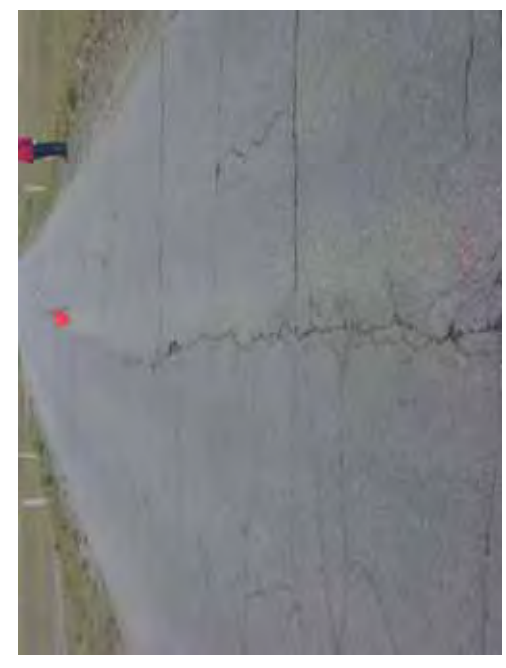
Scale

No.

D-106



10+800	10	20	30	40	50	60	70	80	90	100
COMMENT	Volume of crackle: most Width of crackle: 05-110mm There are the most crackle in central axis of the road. 436 / 2800 * 100 = 15.57%									
SUBJECTIVE EVALUATION	Volume of crackle: most Width of crackle: 05-120mm There are the most crackle in central axis of the road. 364 / 2800 * 100 = 13.00%									
OBJECTIVE EVALUATION	Volume of crackle: most Width of crackle: 10-70mm There are the most crackle in central axis of the road. 498 / 2800 * 100 = 17.79%									
TYPE OF PAVEMENT REHABILITATION	3									
	b, c									
	B									



DSC01048



DSC01049



DSC01050



DSC01051

THE BASIC DESIGN STUDY ON CONSTRUCTION OF EASTERN ARTERIAL ROAD IN MONGOLIA	
JAPAN INTERNATIONAL COOPERATION AGENCY (JICA)	DEPARTMENT OF ROADS, MINISTRY OF INFRASTRUCTURE, THE GOVERNMENT OF MONGOLIA
PACIFIC CONSULTANTS INTERNATIONAL JAPAN OVERSEAS CONSULTANTS	
Drawing title 10900-I-1000	Scale No. D-107