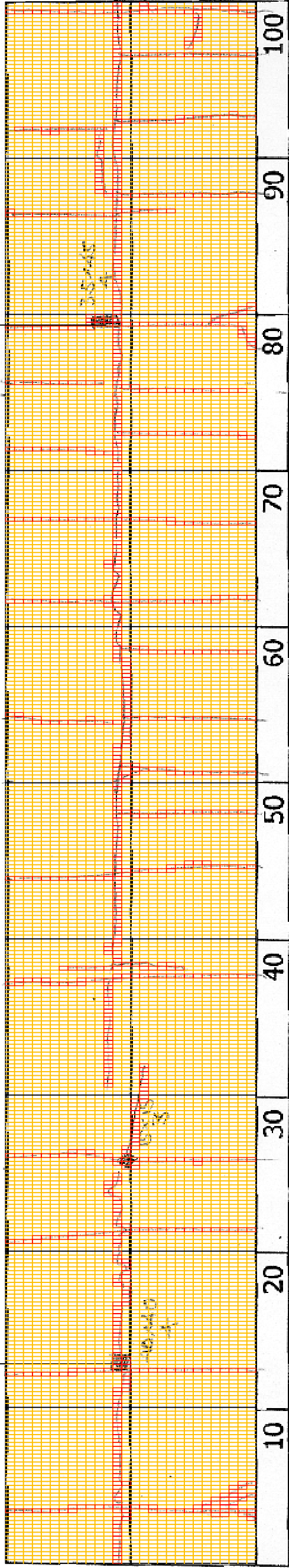
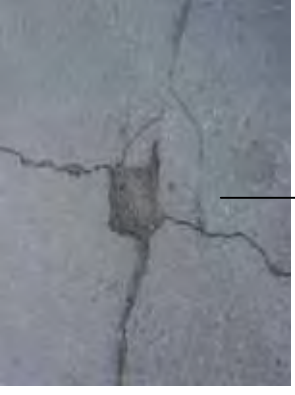


DSC01013

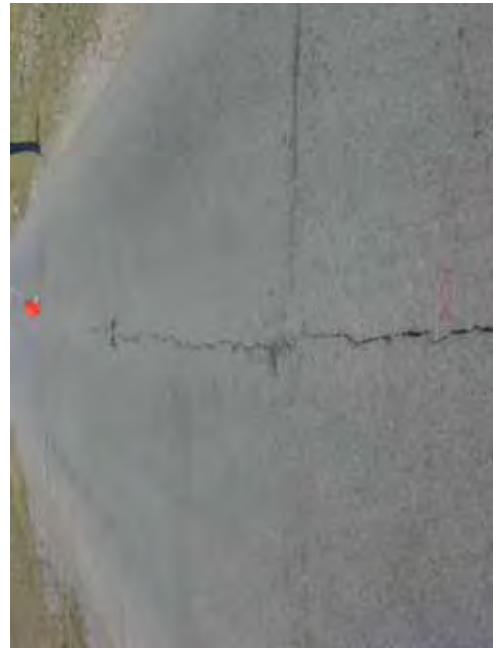


DSC01017



10+000

COMMENT	Volume of crackle: less Width of crackle: 05-50mm There is a pothole in + 10113 metre. (400*400*40mm) 226 / 2800 * 100 = 8.07%	Volume of crackle: most Width of crackle: 10-50mm 237 2800 * 100 = 8.46%	Volume of crackle: most Width of crackle: 05-60mm 258 / 2800 * 100 = 9.21%	Volume of crackle: most Width of crackle: 10-60mm There is a pothole in + 10180 metre. (350*450*40mm) 313 / 2800 * 100 = 11.18%
SUBJECTIVE EVALUATION	3	3	3	3
OBJECTIVE EVALUATION	b, c	b, c	b	b, c
TYPE OF PAVEMENT REHABILITATION	B	B	B	B



DSC01012



DSC01014



DSC01015



DSC01016

THE BASIC DESIGN STUDY ON CONSTRUCTION OF EASTERN ARTERIAL ROAD IN MONGOLIA

JAPAN INTERNATIONAL COOPERATION AGENCY (JICA)

MINISTRY OF INFRASTRUCTURE,  
THE GOVERNMENT OF MONGOLIA

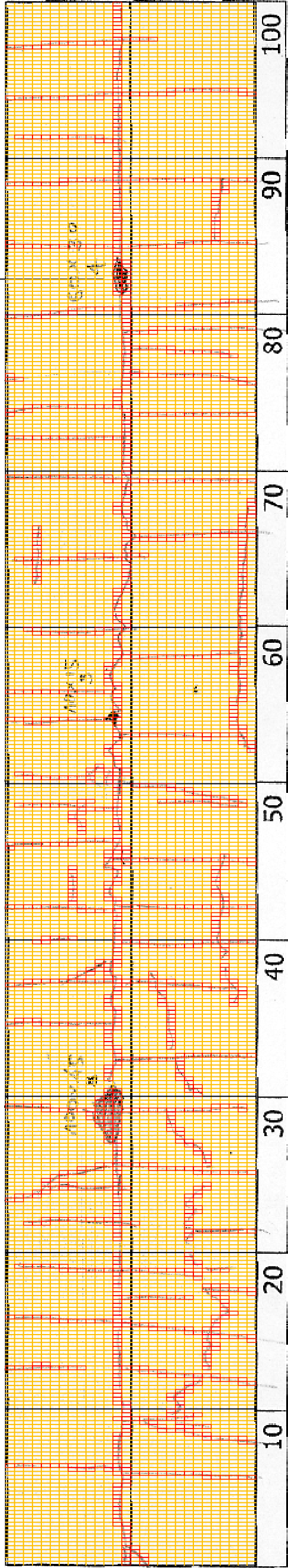
10100-10200

Scale

No.

D-99

DSC01022



10+100

COMMENT	Volume of crackle: most Width of crackle: 05-40mm 397 / 2800 * 100 = 14.18%	Volume of crackle: most Width of crackle: 05-30mm There is a pothole in + 10230 metre. (1000*450*80mm) There are the most crackle in left side of the road. 492 / 2800 * 100 = 17.57%	Volume of crackle: medium Width of crackle: 10-60mm 393 / 2800 * 100 = 14.04%	Volume of crackle: medium Width of crackle: 05-30mm There is a pothole in + 10281 metre. (600*300*40mm) 323 / 2800 * 100 = 11.54%
SUBJECTIVE EVALUATION	3	3	3	3
OBJECTIVE EVALUATION	b	b, c	b, c	b, c
TYPE OF PAVEMENT REHABILITATION	B	B	B	B



DSC0118



DSC01019



DSC01020



DSC01021

THE BASIC DESIGN STUDY ON CONSTRUCTION OF EASTERN ARTERIAL ROAD IN MONGOLIA

JAPAN INTERNATIONAL COOPERATION AGENCY (JICA)

MINISTRY OF INFRASTRUCTURE,  
THE GOVERNMENT OF MONGOLIA

PACIFIC CONSULTANTS INTERNATIONAL  
JAPAN OVERSEAS CONSULTANTS

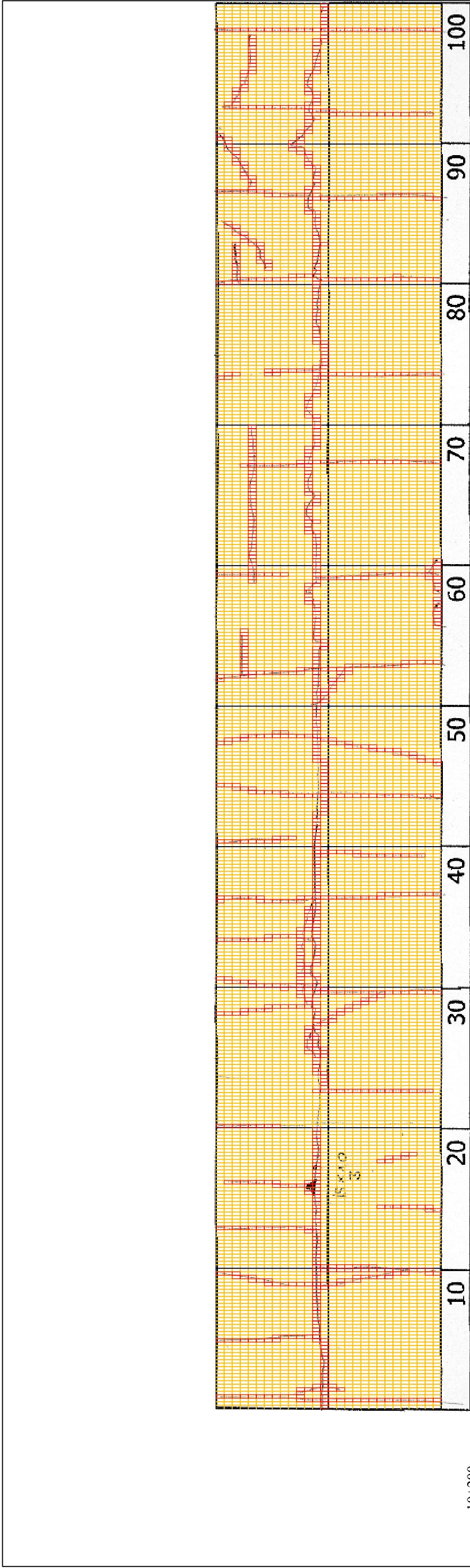
Drawing title

10200-10300

Scale

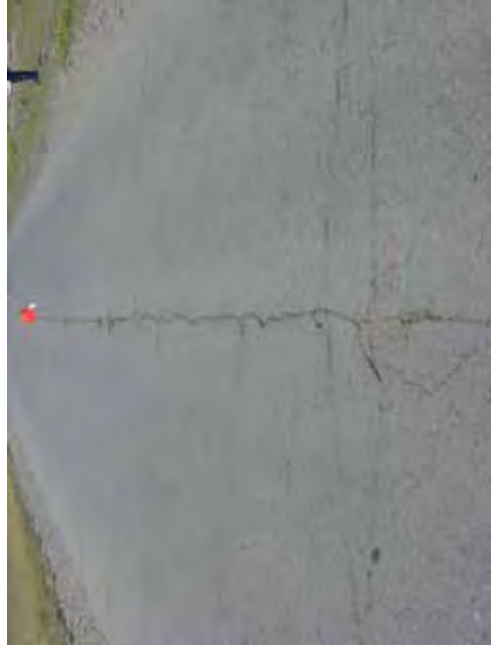
No.

D-100



10+200

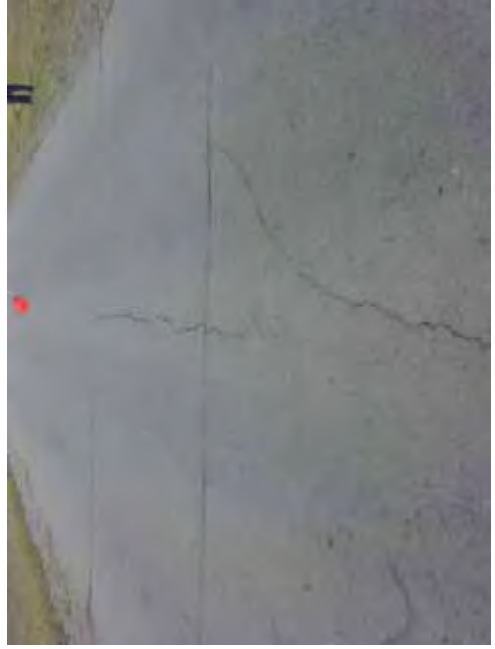
COMMENT	Volume of crackle: medium Width of crackle: 05-80mm There are the most crackle in central axis of the road. 290 / 2800 * 100 = 10.36%	Volume of crackle: most Width of crackle: 10-90mm There are the most crackle in central axis of the road. 342 / 2800 * 100 = 12.21%	Volume of crackle: less Width of crackle: 05-15mm 310 / 2800 * 100 = 11.07%	Volume of crackle: less Width of crackle: 05-15mm 300 / 2800 * 100 = 10.71%
SUBJECTIVE EVALUATION	3	3	3	3
OBJECTIVE EVALUATION	b, c	b	b	b
TYPE OF PAVEMENT REHABILITATION	B	B	B	B



DSC01023



DSC01024

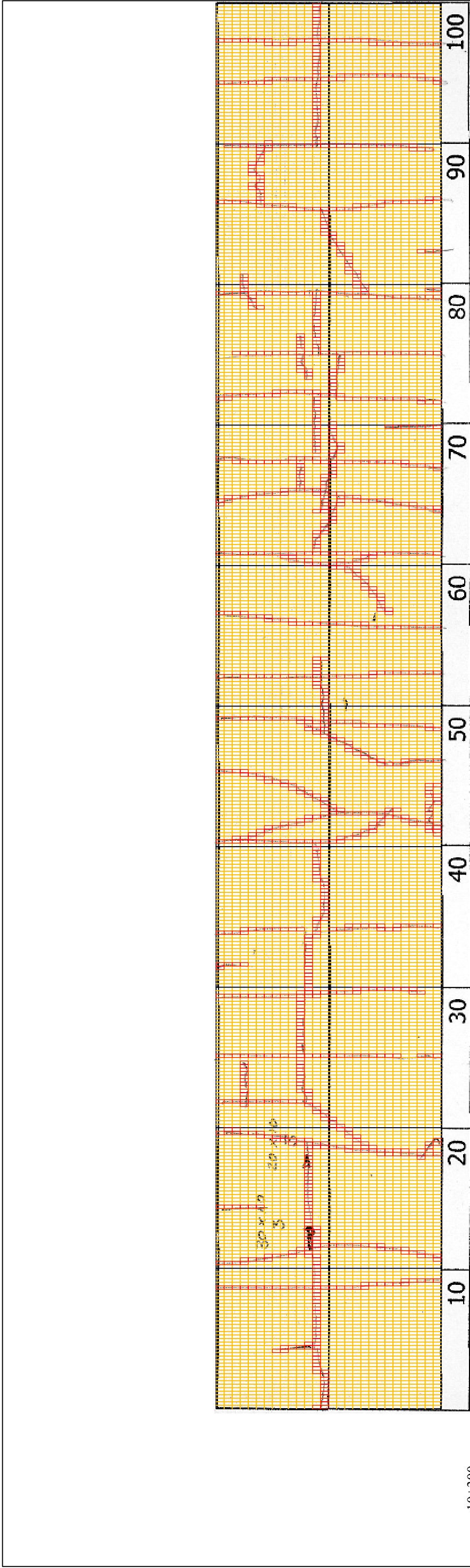


DSC01025



DSC01026

THE BASIC DESIGN STUDY ON CONSTRUCTION OF EASTERN ARTERIAL ROAD IN MONGOLIA	
JAPAN INTERNATIONAL COOPERATION AGENCY (JICA)	DEPARTMENT OF ROADS, MINISTRY OF INFRASTRUCTURE, THE GOVERNMENT OF MONGOLIA
PACIFIC CONSULTANTS INTERNATIONAL JAPAN OVERSEAS CONSULTANTS	
Drawing title 10300-10400	Scale No. D-101



10+300

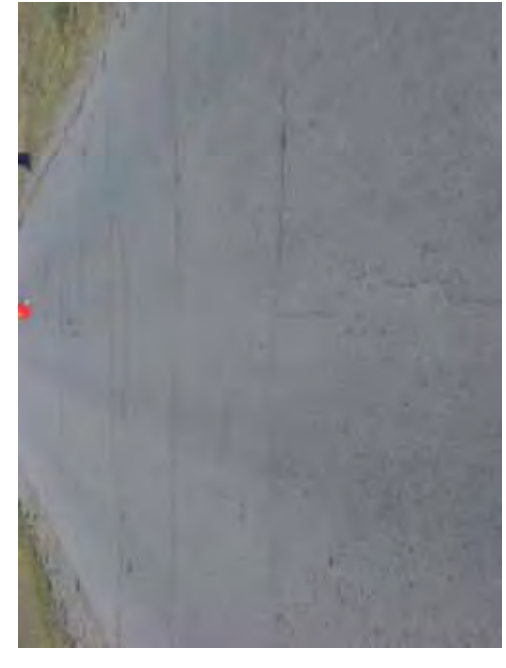
COMMENT	Volume of crackle: less Width of crackle: 05-130mm There are the most crackle in central axis of the road. 269 / 2800 * 100 = 9.61%	Volume of crackle: medium Width of crackle: 05-50mm 331 / 2800 * 100 = 11.82%	Volume of crackle: medium Width of crackle: 05-40mm 343 / 2800 * 100 = 12.25%	Volume of crackle: medium Width of crackle: 05-30mm 303 / 2800 * 100 = 10.82%
SUBJECTIVE EVALUATION	3	3	3	3
OBJECTIVE EVALUATION	b, c	b	b	b
TYPE OF PAVEMENT REHABILITATION	B	B	B	B



DSC01027



DSC01028

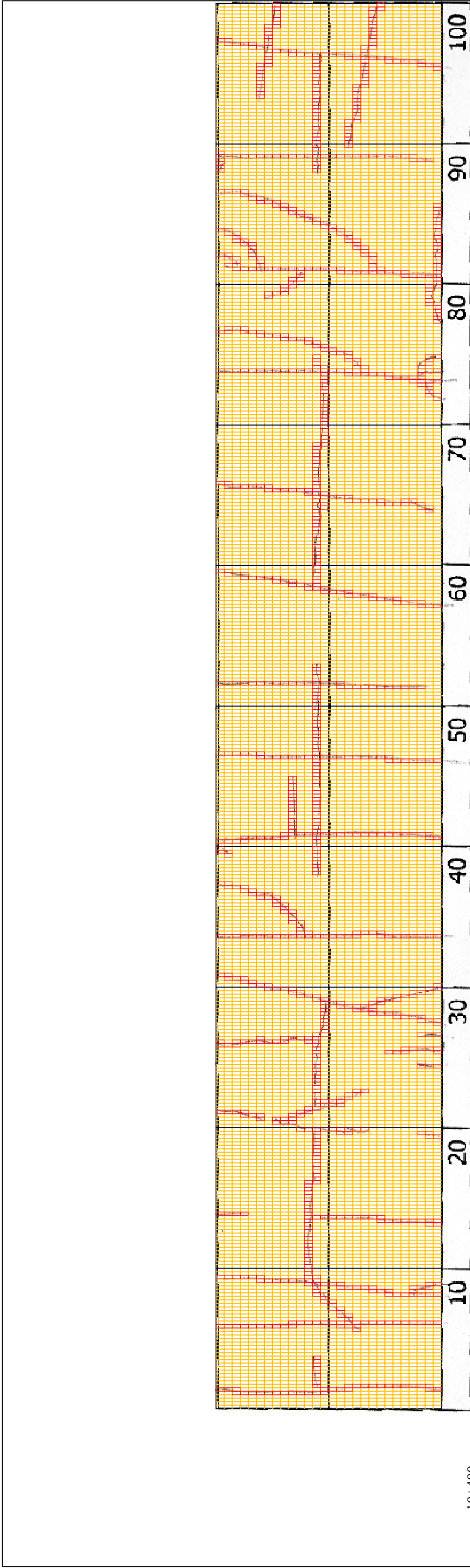


DSC01029



DSC01030

THE BASIC DESIGN STUDY ON CONSTRUCTION OF EASTERN ARTERIAL ROAD IN MONGOLIA	
JAPAN INTERNATIONAL COOPERATION AGENCY (JICA)	DEPARTMENT OF ROADS,
PACIFIC CONSULTANTS INTERNATIONAL JAPAN OVERSEAS CONSULTANTS	MINISTRY OF INFRASTRUCTURE, THE GOVERNMENT OF MONGOLIA
Drawing title 10400-10500	Scale
No. D-102	



10+400

COMMENT	Volume of crackle: medium Width of crackle: 05-15mm 262 / 2800 * 100 = %	Volume of crackle: medium Width of crackle: 05-15mm 287 / 2800 * 100 = 10.25%	Volume of crackle: medium Width of crackle: 05-10mm 237 / 2800 * 100 = 8.46%	Volume of crackle: medium Width of crackle: 05-15mm 338 / 2800 * 100 = 12.07%
SUBJECTIVE EVALUATION	3	3	3	3
OBJECTIVE EVALUATION	b	b	b	b
TYPE OF PAVEMENT REHABILITATION	B	B	B	B



DSC01031



DSC01032



DSC01033



DSC01034

THE BASIC DESIGN STUDY ON CONSTRUCTION OF EASTERN ARTERIAL ROAD IN MONGOLIA

JAPAN INTERNATIONAL COOPERATION AGENCY (JICA)  
MINISTRY OF INFRASTRUCTURE,  
THE GOVERNMENT OF MONGOLIA

PACIFIC CONSULTANTS INTERNATIONAL  
JAPAN OVERSEAS CONSULTANTS

Scale  
10500-10600

No.  
D-103