

9+500

COMMENT	Volume of crackle: less Width of crackle: 05-30mm 190 / 2800 * 100 = 6.79%	Volume of crackle: medium Width of crackle: 05-40mm 279 / 2800 * 100 = 9.96%	Volume of crackle: less Width of crackle: 05-30mm 224 / 2800 * 100 = 8.00%	Volume of crackle: less Width of crackle: 05-35mm 214 / 2800 * 100 = 7.64%
SUBJECTIVE EVALUATION	3	3	3	3
OBJECTIVE EVALUATION	b	b	b	b
TYPE OF PAVEMENT REHABILITATION	B	B	B	B



DSC00992



DSC00993



DSC00994



DSC00995

THE BASIC DESIGN STUDY ON CONSTRUCTION OF EASTERN ARTERIAL ROAD IN MONGOLIA

JAPAN INTERNATIONAL COOPERATION AGENCY (JICA)

DEPARTMENT OF ROADS,
MINISTRY OF INFRASTRUCTURE,
THE GOVERNMENT OF MONGOLIA

PACIFIC CONSULTANTS INTERNATIONAL
JAPAN OVERSEAS CONSULTANTS

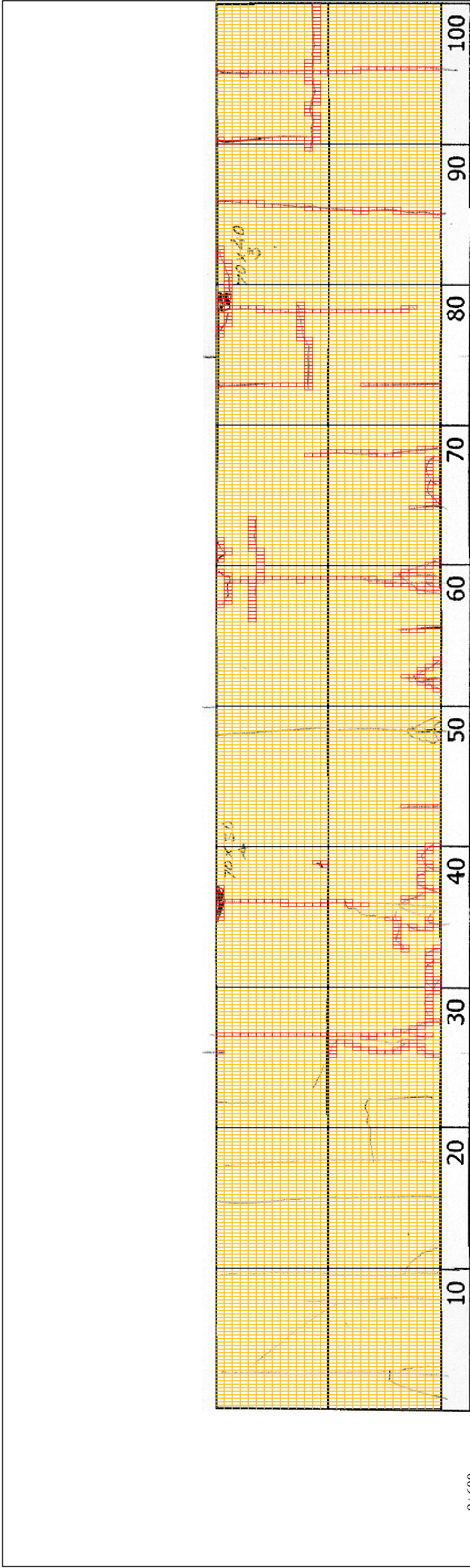
Drawing title

9600-9700

No.

D-94

Scale



9+600

COMMENT	Volume of crackle: less Width of crackle: 05-15mm 244 / 2800 * 100 = 8.71%	Volume of crackle: medium Width of crackle: 05-20mm There are the most crackle in left side of the road. 259 / 2800 * 100 = 9.25%	Volume of crackle: less Width of crackle: 05-15mm 207 / 2800 * 100 = 7.39%	Volume of crackle: less Width of crackle: 05-20mm 198 / 2800 * 100 = 7.07%
SUBJECTIVE EVALUATION	3	3	3	3
OBJECTIVE EVALUATION	b	b, c	b	b, c
TYPE OF PAVEMENT REHABILITATION	B	B	B	B



DSC00996



DSC00997



DSC00998



DSC00999

THE BASIC DESIGN STUDY ON CONSTRUCTION OF EASTERN ARTERIAL ROAD IN MONGOLIA

JAPAN INTERNATIONAL COOPERATION AGENCY (JICA)

DEPARTMENT OF ROADS,
MINISTRY OF INFRASTRUCTURE,
THE GOVERNMENT OF MONGOLIA

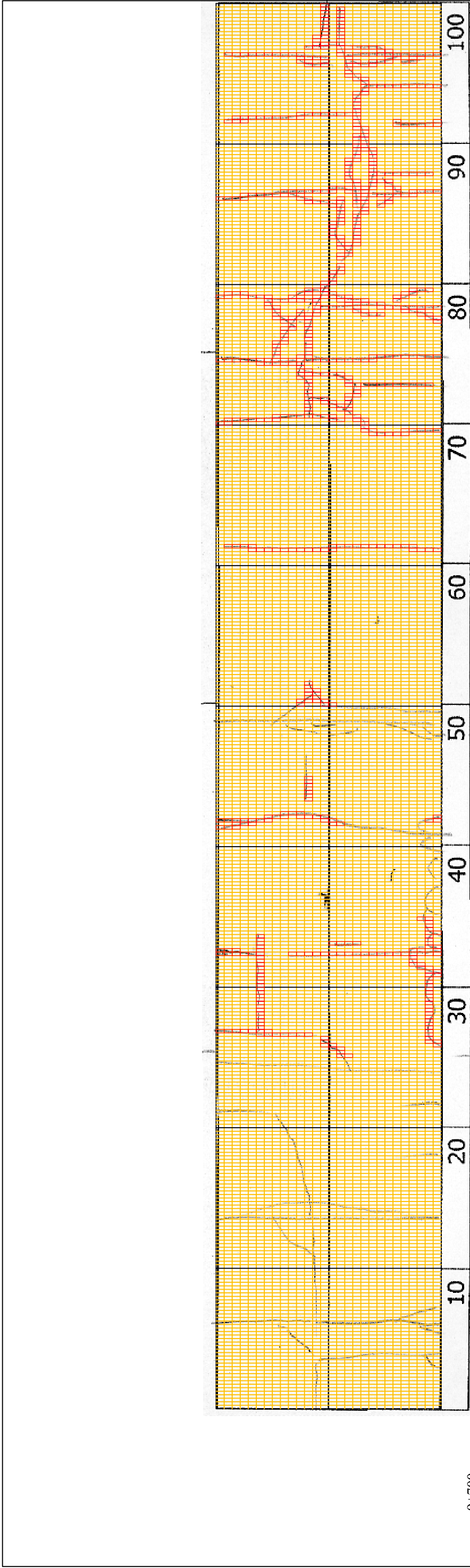
PACIFIC CONSULTANTS INTERNATIONAL
JAPAN OVERSEAS CONSULTANTS

Drawing title

9700-9800

No.

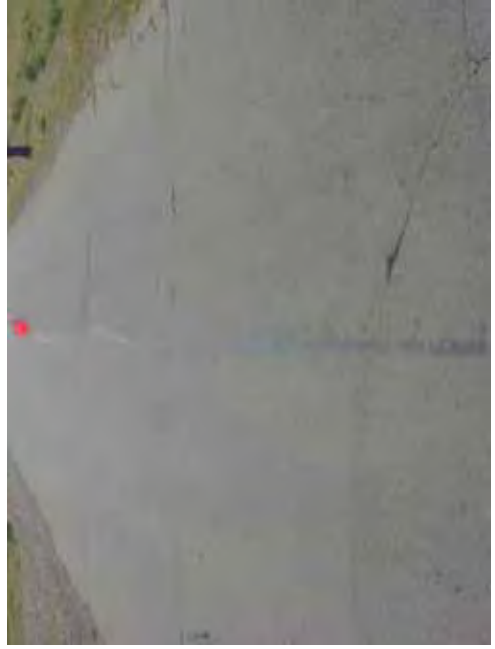
D-95



9+700	Volume of crackle: less Width of crackle: 05-50mm 285 / 2800 * 100 = 10.18%	Volume of crackle: less Width of crackle: 05-50mm There are the most crackle in left side of the road. 310 / 2800 * 100 = 11.07%	Volume of crackle: less Width of crackle: 05-20mm 171 / 2800 * 100 = 6.11%	Volume of crackle: medium Width of crackle: 05-40mm 406 / 2800 * 100 = 14.50%
COMMENT				
SUBJECTIVE EVALUATION	3	3	3	3
OBJECTIVE EVALUATION	b	b	b	b
TYPE OF PAVEMENT REHABILITATION	B	B	B	B



DSC01000



DSC01001

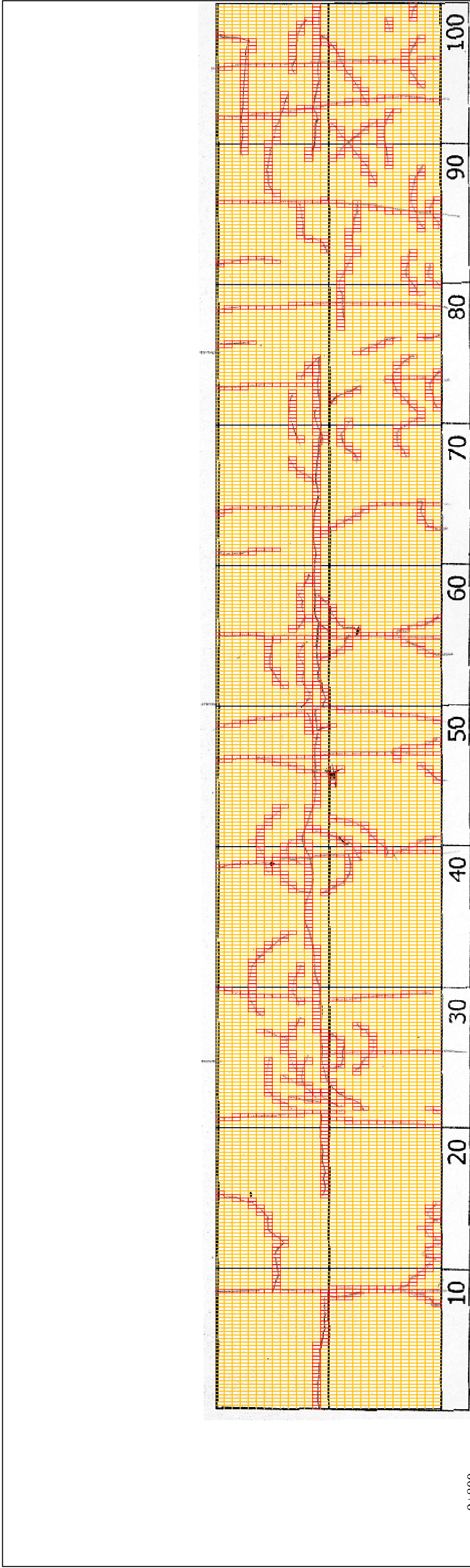


DSC01002



DSC01003

THE BASIC DESIGN STUDY ON CONSTRUCTION OF EASTERN ARTERIAL ROAD IN MONGOLIA	
JAPAN INTERNATIONAL COOPERATION AGENCY (JICA)	DEPARTMENT OF ROADS, MINISTRY OF INFRASTRUCTURE, THE GOVERNMENT OF MONGOLIA
PACIFIC CONSULTANTS INTERNATIONAL JAPAN OVERSEAS CONSULTANTS	
Drawing title	Scale
98/00-99/00	No. D-96



9-800

COMMENT	Volume of crackle: medium Width of crackle: 05-20mm There are the most crackle in left side of the road. 301 / 2800 * 100 = 10.75%	Volume of crackle: most Width of crackle: 05-40mm There are the most crackle in central axis of the road. 469 / 2800 * 100 = 16.75%	Volume of crackle: most Width of crackle: 05-20mm There are the most crackle in central axis of the road. 423 / 2800 * 100 = 15.11%	Volume of crackle: most Width of crackle: 05-30mm There are the most crackle in central axis of the road. 515 / 2800 * 100 = 18.39%
SUBJECTIVE EVALUATION	3	3	3	3
OBJECTIVE EVALUATION	b	b	b	b
TYPE OF PAVEMENT REHABILITATION	B	B	B	B



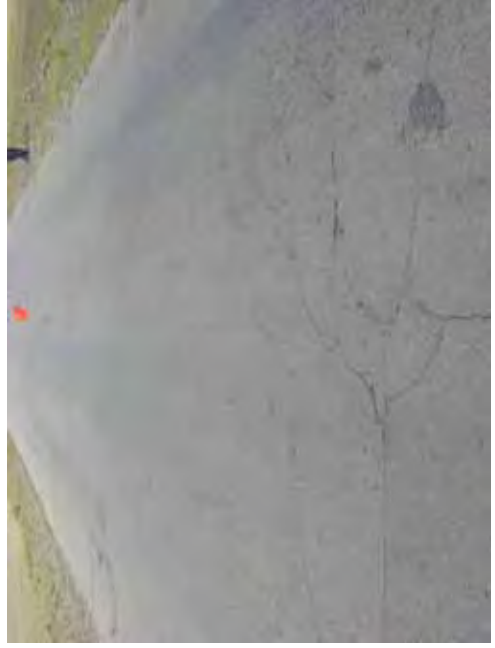
DSC01004



DSC01005

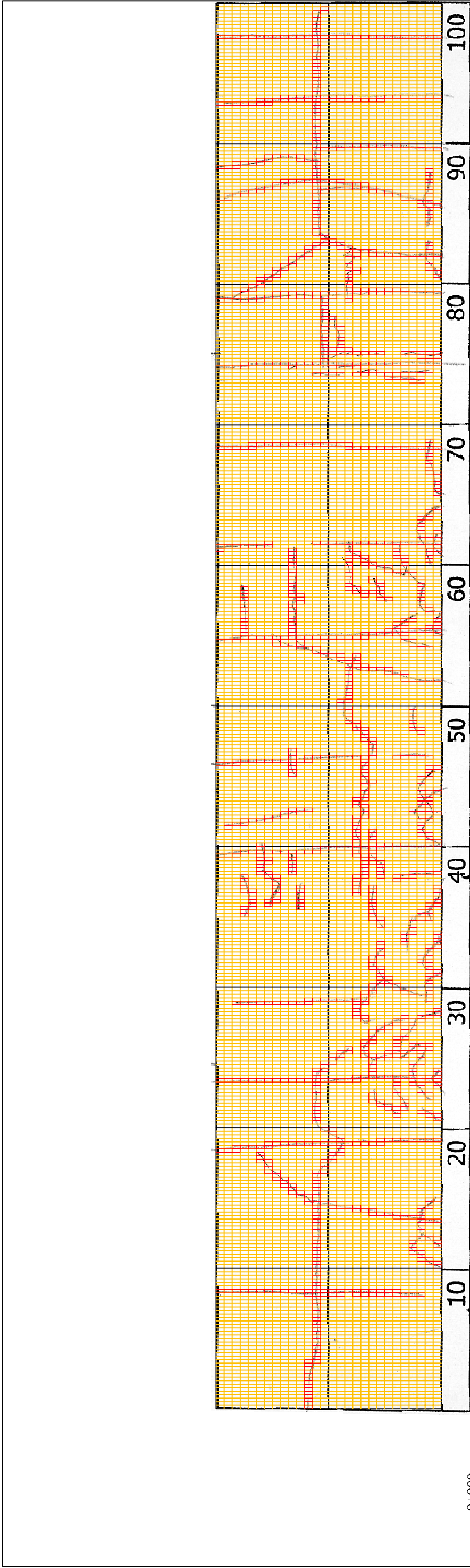


DSC01006



DSC01007

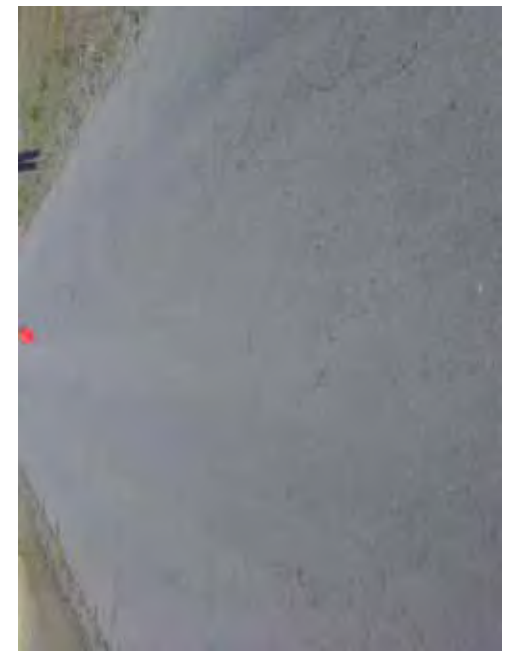
THE BASIC DESIGN STUDY ON CONSTRUCTION OF EASTERN ARTERIAL ROAD IN MONGOLIA	
JAPAN INTERNATIONAL COOPERATION AGENCY (JICA)	DEPARTMENT OF ROADS, MINISTRY OF INFRASTRUCTURE,
PACIFIC CONSULTANTS INTERNATIONAL JAPAN OVERSEAS CONSULTANTS	
Drawing title	Scale
9900-10000	No. D-97



9+900	10	20	30	40	50	60	70	80	90	100
COMMENT	Volume of crackle: medium Width of crackle: 05-25mm There are the most crackle in left side of the road. 324 / 2800 * 100 = 11.57%									
SUBJECTIVE EVALUATION	Volume of crackle: most Width of crackle: 05-30mm There are the most crackle in left side of the road. 438 / 2800 * 100 = 15.64%									
OBJECTIVE EVALUATION	Volume of crackle: medium Width of crackle: 05-15 mm There are the most crackle in left side of the road. 364 / 2800 * 100 = 13.00%									
TYPE OF PAVEMENT REHABILITATION	Volume of crackle: medium Width of crackle: 05-35mm 388 / 2800 * 100 = 13.86%									
	3	3	3	3	3	3	3	3	3	3
	b	b	b	b	b	b	b	b	b	b
	B	B	B	B	B	B	B	B	B	B



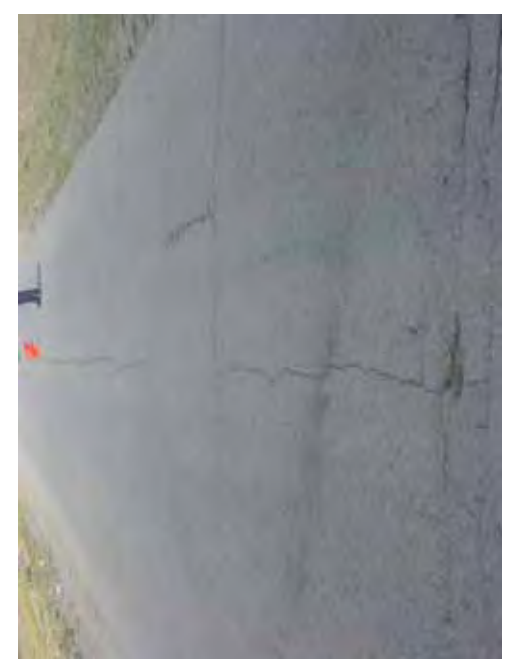
DSC01008



DSC01009



DSC01010



DSC01011

THE BASIC DESIGN STUDY ON CONSTRUCTION OF EASTERN ARTERIAL ROAD IN MONGOLIA

JAPAN INTERNATIONAL COOPERATION AGENCY (JICA)
 DEPARTMENT OF ROADS,
 MINISTRY OF INFRASTRUCTURE,
 THE GOVERNMENT OF MONGOLIA

PACIFIC CONSULTANTS INTERNATIONAL
 JAPAN OVERSEAS CONSULTANTS

Drawing title: 10000-10100
 Scale: No. D-98