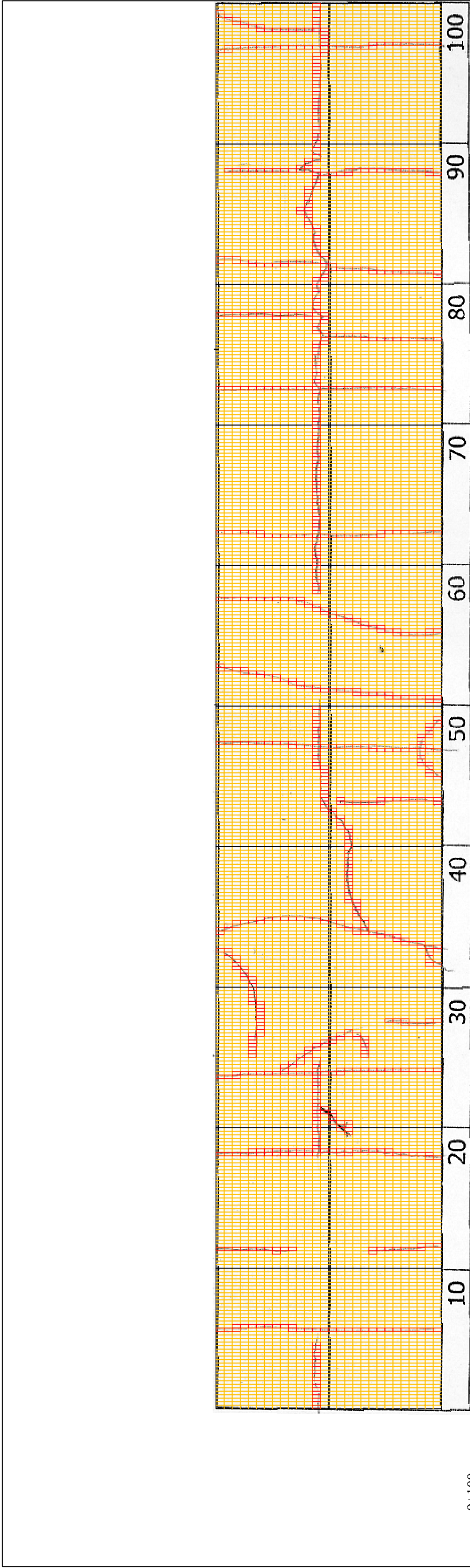


9+000

| | | | | |
|---------------------------------|---|--|---|--|
| COMMENT | Volume of crackle: less Width of crackle: 05mm 110 / 2800 * 100 = 3.93% | Volume of crackle: less Width of crackle: 05mm 78 / 2800 * 100 = 2.79% | Volume of crackle: less Width of crackle: 05-10mm 73 / 2800 * 100 = 2.61% | Volume of crackle: less Width of crackle: 05-10mm 192 / 2800 * 100 = 6.86% |
| SUBJECTIVE EVALUATION | 3 | 3 | 3 | 3 |
| OBJECTIVE EVALUATION | b | b | b | b |
| TYPE OF PAVEMENT REHABILITATION | B | B | B | B |



| | |
|---|---|
| THE BASIC DESIGN STUDY ON CONSTRUCTION OF EASTERN ARTERIAL ROAD IN MONGOLIA | |
| JAPAN INTERNATIONAL COOPERATION AGENCY (JICA) | DEPARTMENT OF ROADS, MINISTRY OF INFRASTRUCTURE, THE GOVERNMENT OF MONGOLIA |
| PACIFIC CONSULTANTS INTERNATIONAL JAPAN OVERSEAS CONSULTANTS | |
| Drawing title | Scale |
| 9100-9200 | No. D-89 |



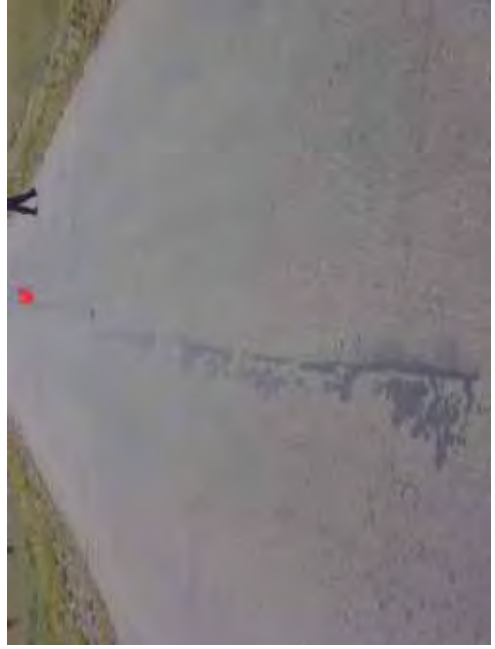
| | | | | |
|---------------------------------|--|--|--|--|
| 9+100 | Volume of crackle: less Width of crackle: 05-10mm 186 / 2800 * 100 = 6.64% | Volume of crackle: less Width of crackle: 05-20mm 253 / 2800 * 100 = 9.04% | Volume of crackle: less Width of crackle: 05-10mm 202 / 2800 * 100 = 7.21% | Volume of crackle: less Width of crackle: 05-25mm 251 / 2800 * 100 = 8.96% |
| COMMENT | | | | |
| SUBJECTIVE EVALUATION | 3 | 3 | 3 | 3 |
| OBJECTIVE EVALUATION | b | b | b | b |
| TYPE OF PAVEMENT REHABILITATION | B | B | B | B |



DSC00976



DSC00977



DSC00978



DSC00979

| | |
|---|---|
| THE BASIC DESIGN STUDY ON CONSTRUCTION OF EASTERN ARTERIAL ROAD IN MONGOLIA | |
| JAPAN INTERNATIONAL COOPERATION AGENCY (JICA) | DEPARTMENT OF ROADS, MINISTRY OF INFRASTRUCTURE, THE GOVERNMENT OF MONGOLIA |
| PACIFIC CONSULTANTS INTERNATIONAL JAPAN OVERSEAS CONSULTANTS | |
| Drawing title | Scale |
| 9200-9300 | No. |
| | D-90 |



9+200

| | | | | |
|---------------------------------|--|---|--|---|
| COMMENT | Volume of crackle: less Width of crackle: 05-20mm 228 / 2800 * 100 = 8.14% | Volume of crackle: less Width of crackle: 05-15mm 283 / 2800 * 100 = 10.11% | Volume of crackle: less Width of crackle: 10-50mm 259 / 2800 * 100 = 9.25% | Volume of crackle: medium Width of crackle: 10-80mm 332 / 2800 * 100 = 11.86% |
| SUBJECTIVE EVALUATION | 3 | 3 | 3 | 3 |
| OBJECTIVE EVALUATION | b, c | b | b | b |
| TYPE OF PAVEMENT REHABILITATION | B | B | B | B |



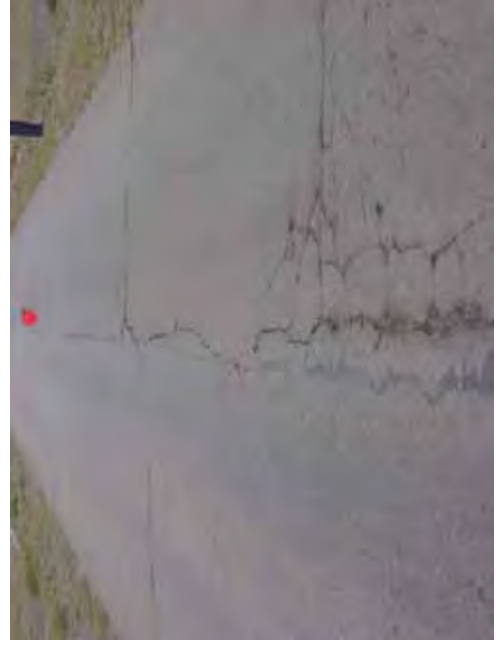
DSC00980



DSC00981



DSC00982



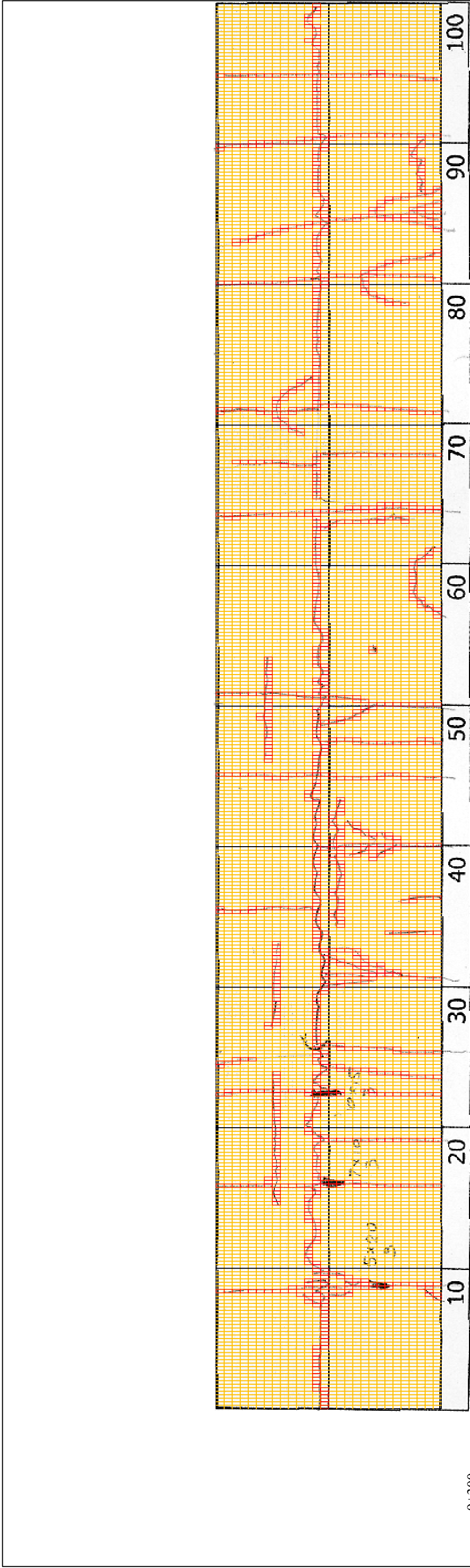
DSC00983

THE BASIC DESIGN STUDY ON CONSTRUCTION OF EASTERN ARTERIAL ROAD IN MONGOLIA

JAPAN INTERNATIONAL COOPERATION AGENCY (JICA)
MINISTRY OF INFRASTRUCTURE,
THE GOVERNMENT OF MONGOLIA

PACIFIC CONSULTANTS INTERNATIONAL
JAPAN OVERSEAS CONSULTANTS

Drawing title: 9300-9400
Scale: No. D-91



9+300

| | | | | |
|---------------------------------|---|---|--|--|
| COMMENT | Volume of crackle: medium Width of crackle: 05-70mm There is a pothole in + 9408 metre. (50*200*30mm) There is a pothole in + 9416 metre. (70*100*30mm) There is a pothole in + 9422 metre. (100*150*30mm) 315 / 2800 * 100 = 11.25% | Volume of crackle: medium Width of crackle: 10-120 | Volume of crackle: medium Width of crackle: 05-50mm | Volume of crackle: medium Width of crackle: 05-10mm |
| SUBJECTIVE EVALUATION | 3 | 3 | 3 | 3 |
| OBJECTIVE EVALUATION | b, c | b | b | b |
| TYPE OF PAVEMENT REHABILITATION | B | B | B | B |



DSC0984



DSC00985



DSC00986



DSC00987

THE BASIC DESIGN STUDY ON CONSTRUCTION OF EASTERN ARTERIAL ROAD IN MONGOLIA

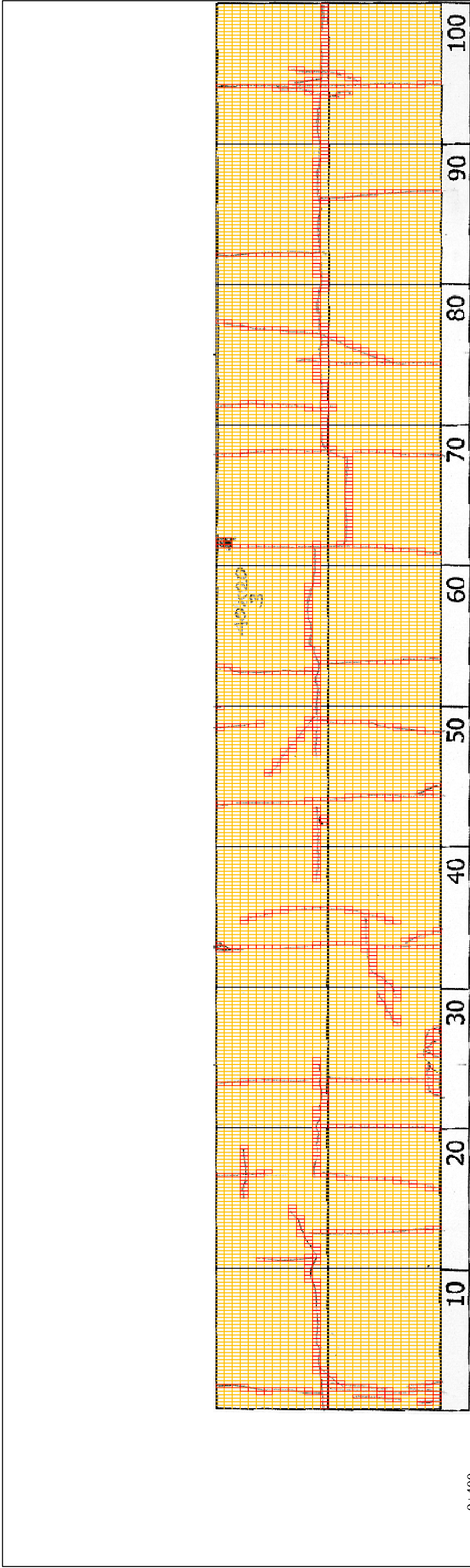
JAPAN INTERNATIONAL COOPERATION AGENCY (JICA)
MINISTRY OF INFRASTRUCTURE,
THE GOVERNMENT OF MONGOLIA

PACIFIC CONSULTANTS INTERNATIONAL
JAPAN OVERSEAS CONSULTANTS

Scale

94/00-95/00

No.
D-92



| | | | | |
|---------------------------------|---|--|--|--|
| 9+400 | Volume of crackle: medium Width of crackle: 05-40mm 283 / 2800 * 100 = 10.11% | Volume of crackle: less Width of crackle: 05-20mm 250 / 2800 * 100 = % | Volume of crackle: medium Width of crackle: 05-15mm There is a pothole in + 9553 metre. (400*200*30mm) 239 / 2800 * 100 = 8.54% | Volume of crackle: medium Width of crackle: 05-50mm 220 / 2800 * 100 = 7.86% |
| COMMENT | | | | |
| SUBJECTIVE EVALUATION | 3 | 3 | 3 | 3 |
| OBJECTIVE EVALUATION | b | b | b, c | b |
| TYPE OF PAVEMENT REHABILITATION | B | B | B | B |



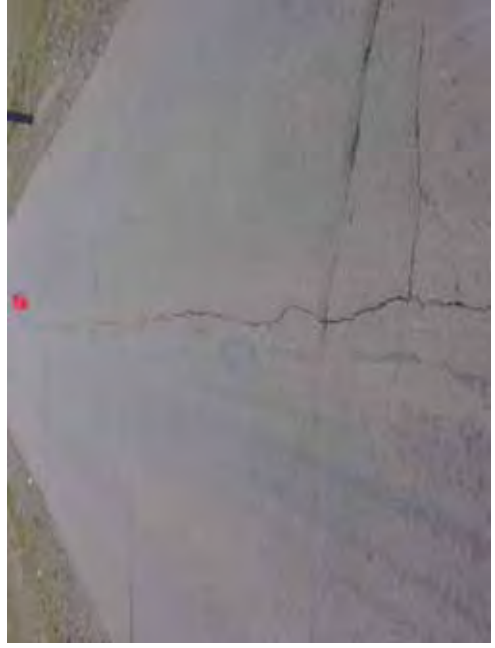
DSC00988



DSC00989



DSC00990



DSC00991

THE BASIC DESIGN STUDY ON CONSTRUCTION OF EASTERN ARTERIAL ROAD IN MONGOLIA

JAPAN INTERNATIONAL COOPERATION AGENCY (JICA)
MINISTRY OF INFRASTRUCTURE,
THE GOVERNMENT OF MONGOLIA

PACIFIC CONSULTANTS INTERNATIONAL
JAPAN OVERSEAS CONSULTANTS

Drawing title: 9500-9600
Scale: No. D-93