

DSC00934



8+000

COMMENT	Volume of crackle: medium Width of crackle: 05-10mm There are the most crackle in central axis of the road. 233 / 2800 * 100 = 8.32%	Volume of crackle: medium Width of crackle: 05-30mm There is a pothole in + 8155 metre. (800*400*50mm) 278 / 2800 * 100 = 9.93%	Volume of crackle: less Width of crackle: 05-40mm 245 / 2800 * 100 = 8.75%	Volume of crackle: medium Width of crackle: 05-25mm 305 / 2800 * 100 = 10.89%
SUBJECTIVE EVALUATION	3	3	3	3
OBJECTIVE EVALUATION	b	b, c	b	b
TYPE OF PAVEMENT REHABILITATION	B	B	B	B



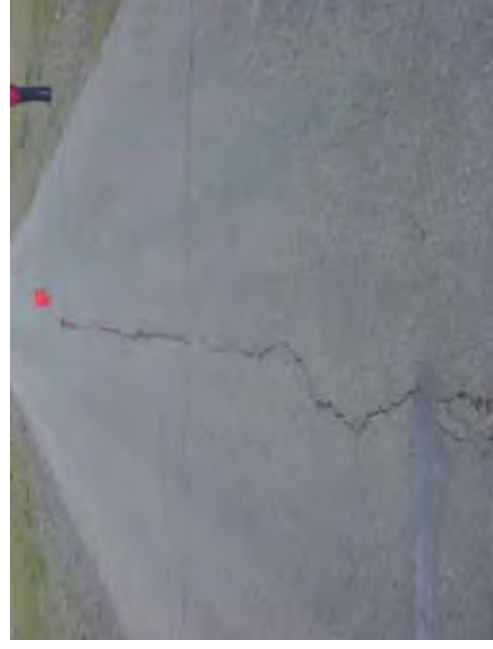
DSC00931



DSC00932



DSC00933



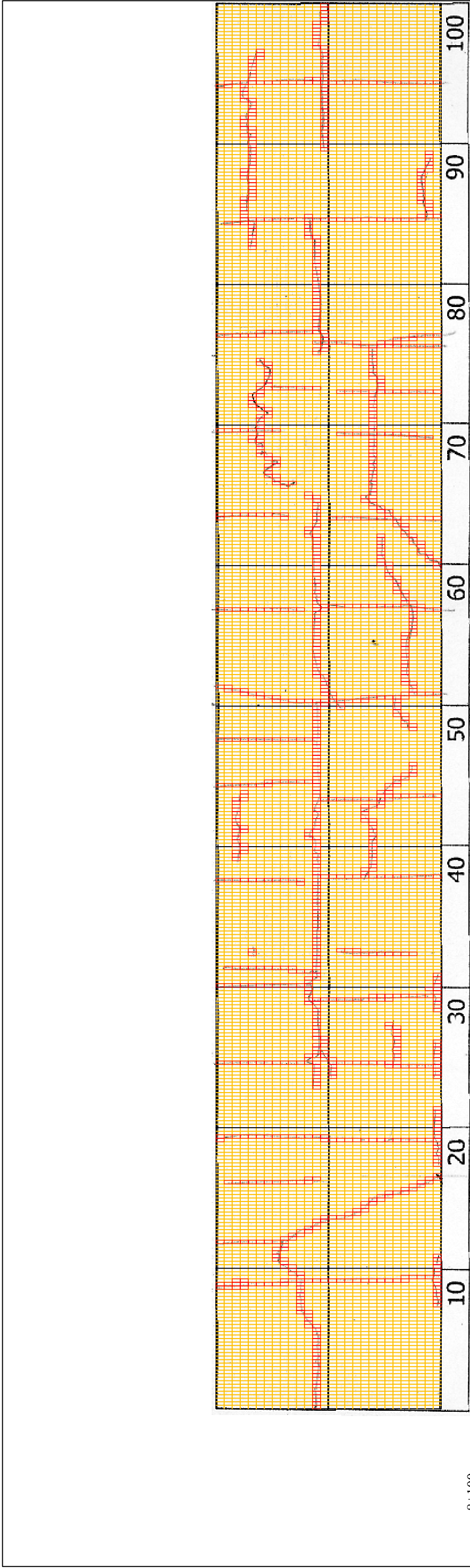
DSC00935

THE BASIC DESIGN STUDY ON CONSTRUCTION OF EASTERN ARTERIAL ROAD IN MONGOLIA

JAPAN INTERNATIONAL COOPERATION AGENCY (JICA)
MINISTRY OF INFRASTRUCTURE,
THE GOVERNMENT OF MONGOLIA

PACIFIC CONSULTANTS INTERNATIONAL
JAPAN OVERSEAS CONSULTANTS

Drawing title
8100-8200
Scale
No.
D-79



8+100	10	20	30	40	50	60	70	80	90	100
COMMENT	Volume of crackle: less Width of crackle: 05-10mm 257 / 2800 * 100 = 9.18%									
SUBJECTIVE EVALUATION	Volume of crackle: medium Width of crackle: 10-90mm 269 / 2800 * 100 = 9.61%									
OBJECTIVE EVALUATION	Volume of crackle: medium Width of crackle: 05-10mm 365 / 2800 * 100 = 13.04%									
TYPE OF PAVEMENT REHABILITATION	Volume of crackle: medium Width of crackle: 10mm 333 / 2800 * 100 = 11.89%									
	3	3	3	3	3	3	3	3	3	3
	b	b	b	b	b	b	b	b	b	b
	B	B	B	B	B	B	B	B	B	B



DSC00936



DSC00937

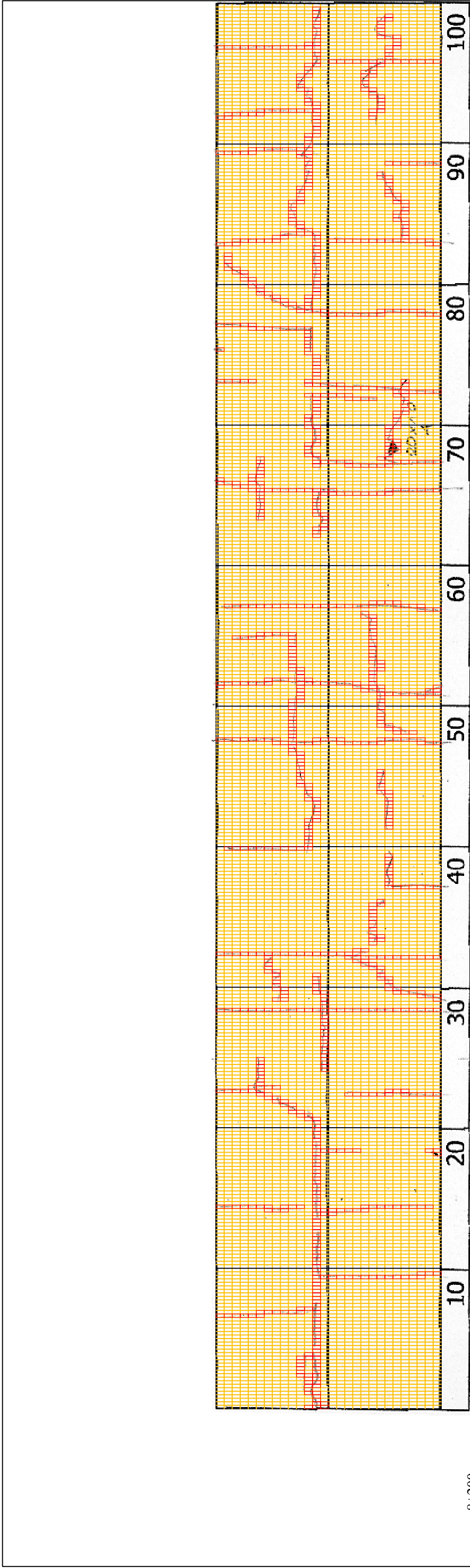


DSC00938



DSC00939

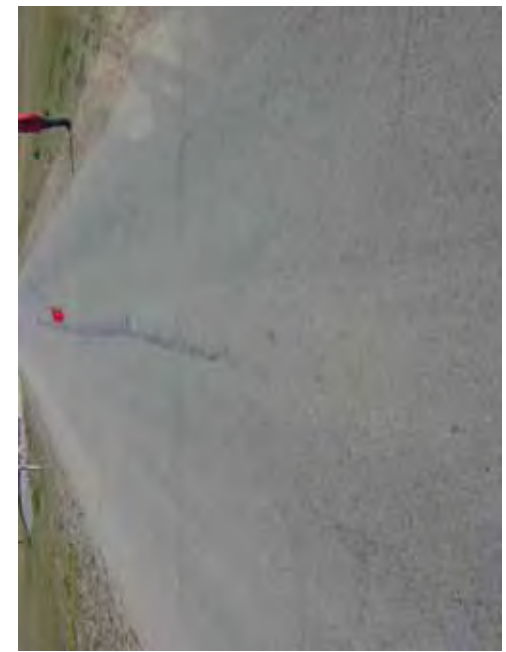
THE BASIC DESIGN STUDY ON CONSTRUCTION OF EASTERN ARTERIAL ROAD IN MONGOLIA	
JAPAN INTERNATIONAL COOPERATION AGENCY (JICA)	DEPARTMENT OF ROADS, MINISTRY OF INFRASTRUCTURE, THE GOVERNMENT OF MONGOLIA
PACIFIC CONSULTANTS INTERNATIONAL JAPAN OVERSEAS CONSULTANTS	
Drawing title	82/00-83/00
Scale	No.
	D-80



8+200	10	20	30	40	50	60	70	80	90	100
COMMENT	Volume of crackle: medium Width of crackle: 05-10mm 217 / 2800 * 100 = 7.75%									
SUBJECTIVE EVALUATION	Volume of crackle: less Width of crackle: 05-20mm 271 / 2800 * 100 = 9.68%									
OBJECTIVE EVALUATION	Volume of crackle: medium Width of crackle: 05-10mm There is a pothole in + 8366 metre. (200*100*40mm) 307 / 2800 * 100 = 10.96%									
TYPE OF PAVEMENT REHABILITATION	Volume of crackle: medium Width of crackle: 5-15mm There are the most crackle in central axis of the road. 318 / 2800 * 100 = 11.36%									



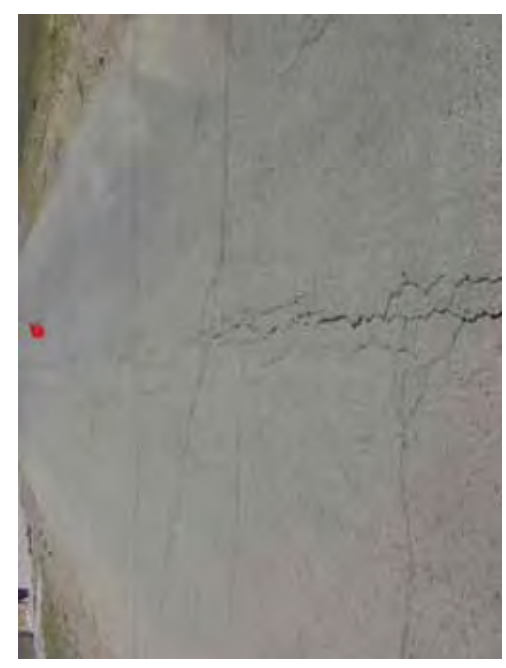
DSC00940



DSC00941



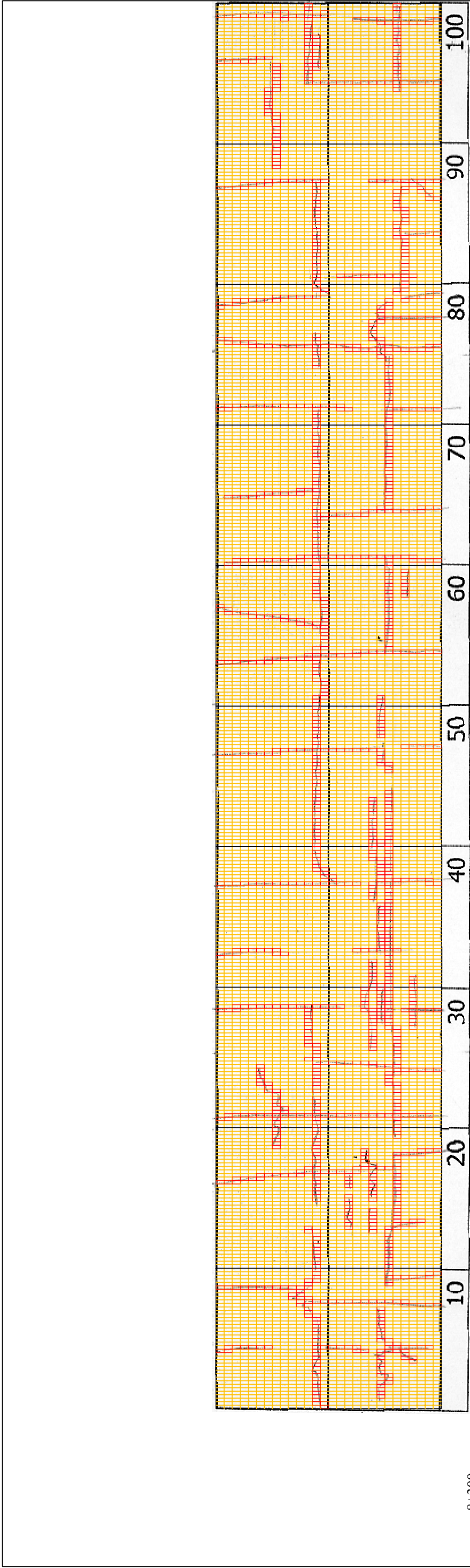
DSC00942



DSC00943

THE BASIC DESIGN STUDY ON CONSTRUCTION OF EASTERN ARTERIAL ROAD IN MONGOLIA

JAPAN INTERNATIONAL COOPERATION AGENCY (JICA)	DEPARTMENT OF ROADS, MINISTRY OF INFRASTRUCTURE, THE GOVERNMENT OF MONGOLIA
PACIFIC CONSULTANTS INTERNATIONAL JAPAN OVERSEAS CONSULTANTS	
Drawing title	Scale
8300-8400	
No.	D-81



8+300

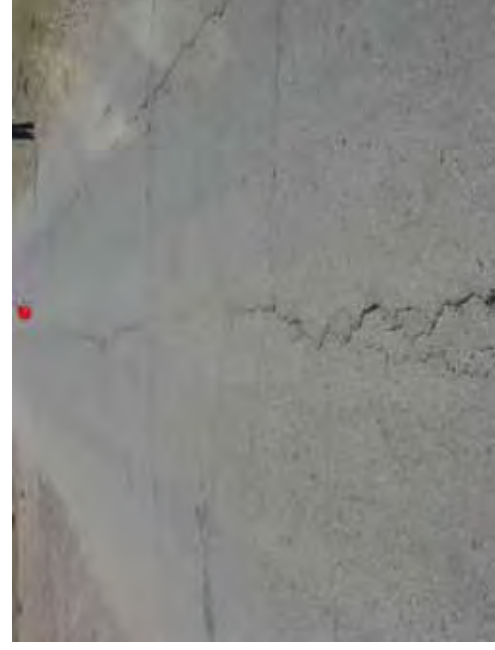
COMMENT	Volume of crackle: most Width of crackle: 10-25mm There are the most crackle in left side of the road. 398 / 2800 * 100 = 14.21%	Volume of crackle: medium Width of crackle: 05-15mm There are the most crackle in left side of the road. 351 / 2800 * 100 = 12.54%	Volume of crackle: medium Width of crackle: 05-20mm There are the most crackle in left side of the road. 311 / 2800 * 100 = 11.11%	Volume of crackle: medium Width of crackle: 05-20mm There are the most crackle in left side of the road. 346 / 2800 * 100 = 12.36%
SUBJECTIVE EVALUATION	3	3	3	3
OBJECTIVE EVALUATION	b	b	b	b
TYPE OF PAVEMENT REHABILITATION	B	B	B	B



DSC00944



DSC00945



DSC00947



DSC00843

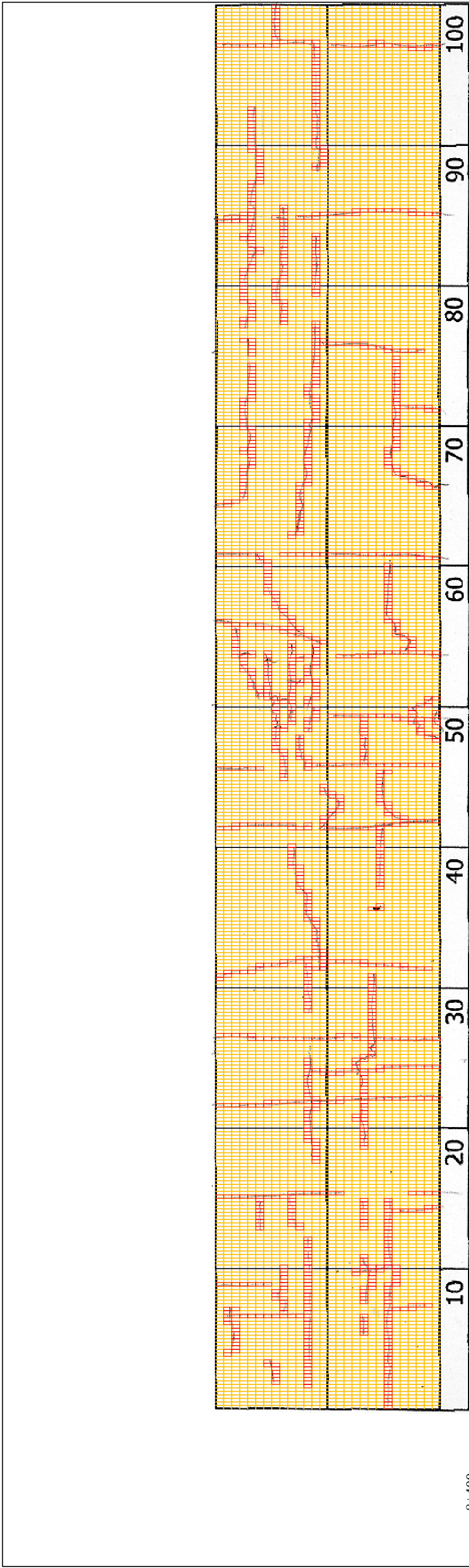
THE BASIC DESIGN STUDY ON CONSTRUCTION OF EASTERN ARTERIAL ROAD IN MONGOLIA

JAPAN INTERNATIONAL COOPERATION AGENCY (JICA)
MINISTRY OF INFRASTRUCTURE,
THE GOVERNMENT OF MONGOLIA

PACIFIC CONSULTANTS INTERNATIONAL
JAPAN OVERSEAS CONSULTANTS

Drawing title
8400-8500

No.
D-82



8+400

COMMENT	Volume of crackle: most Width of crackle: 05-30mm There are the most crackle in left side of the road. $359 / 2800 * 100 = 12.82\%$	Volume of crackle: medium Width of crackle: 05-30mm There are the most crackle in left side of the road. $345 / 2800 * 100 = 12.32\%$	Volume of crackle: most Width of crackle: 05-50mm $370 / 2800 * 100 = 13.21\%$	Volume of crackle: most Width of crackle: 05-40mm There are the most crackle in right side of the road. $268 / 2800 * 100 = 9.57\%$
SUBJECTIVE EVALUATION	3	3	4	3
OBJECTIVE EVALUATION	b	b	a	b
TYPE OF PAVEMENT REHABILITATION	B	B	B	B



DSC00948



DSC00949



DSC00950



DSC00951

THE BASIC DESIGN STUDY ON CONSTRUCTION OF EASTERN ARTERIAL ROAD IN MONGOLIA

JAPAN INTERNATIONAL COOPERATION AGENCY (JICA)	DEPARTMENT OF ROADS, MINISTRY OF INFRASTRUCTURE, THE GOVERNMENT OF MONGOLIA
PACIFIC CONSULTANTS INTERNATIONAL JAPAN OVERSEAS CONSULTANTS	
Drawing title	
8500-8600	
Scale	No.
	D-83