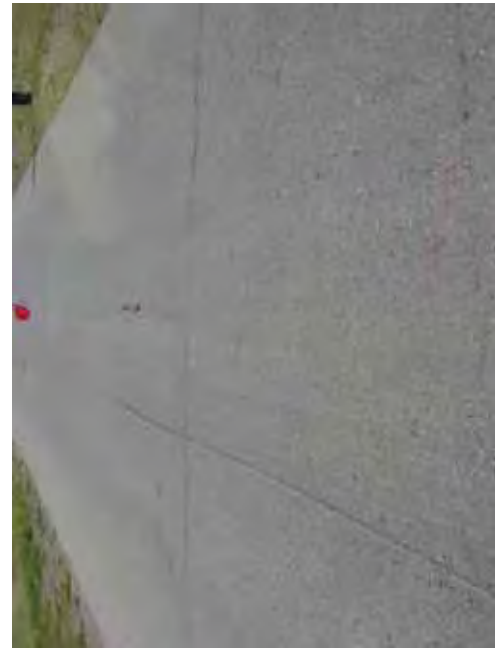


7-400

COMMENT	Volume of crackle: less Width of crackle: 05-10mm 185 / 2800 * 100 = 6.61%	Volume of crackle: less Width of crackle: 05-10mm There is a pothole in + 7526 metre. (100*200*30mm) There is a pothole in + 7526 metre. (100*200*30mm) 104 / 2800 * 100 = 3.71%	Volume of crackle: medium Width of crackle: 05-30mm 216 / 2800 * 100 = 7.71%	Volume of crackle: less Width of crackle: 05-15mm 96 / 2800 * 100 = 3.43%
SUBJECTIVE EVALUATION	3	3	3	3
OBJECTIVE EVALUATION	b	b, c	b	b
TYPE OF PAVEMENT REHABILITATION	B	B	B	B



DSC00906



DSC00907



DSC00908



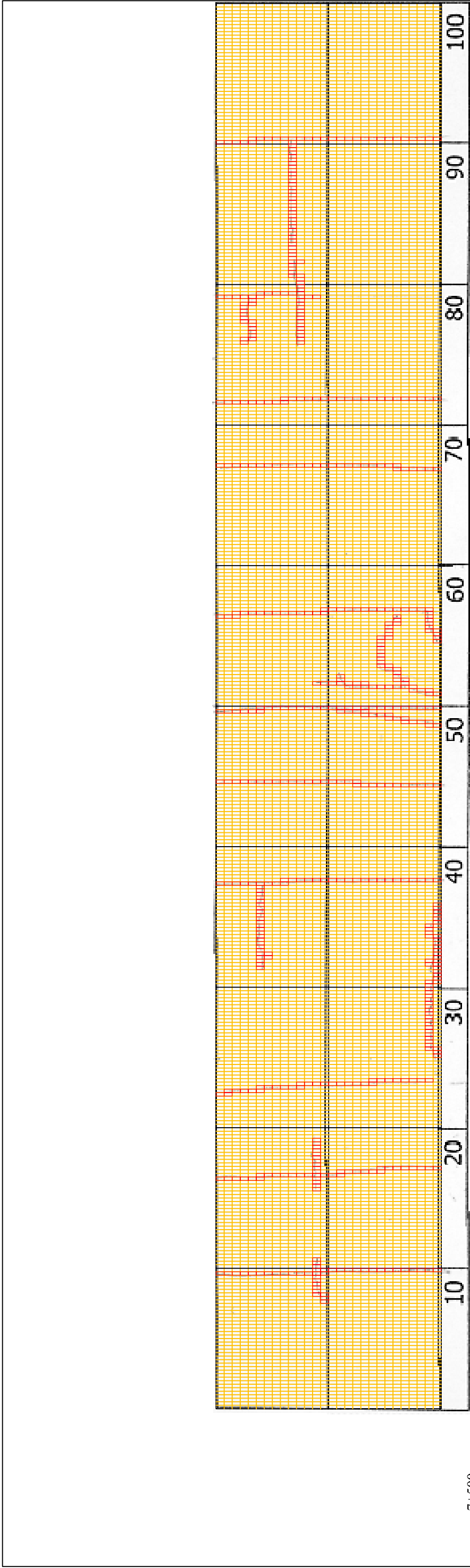
DSC00909

THE BASIC DESIGN STUDY ON CONSTRUCTION OF EASTERN ARTERIAL ROAD IN MONGOLIA

JAPAN INTERNATIONAL COOPERATION AGENCY (JICA)  
PACIFIC CONSULTANTS INTERNATIONAL  
JAPAN OVERSEAS CONSULTANTS

DEPARTMENT OF ROADS,  
MINISTRY OF INFRASTRUCTURE,  
THE GOVERNMENT OF MONGOLIA

Scale  
7500-7600  
No.  
D-73

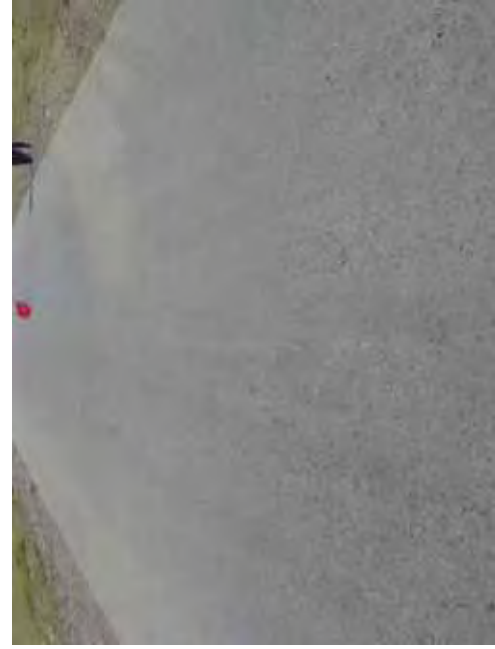


7+500

COMMENT	Volume of crackle: less Width of crackle: 05-10mm 118 / 2800 * 100 = 4.21%	Volume of crackle: less Width of crackle: 05mm 145 / 2800 * 100 = 5.18%	Volume of crackle: less Width of crackle: 05mm 118 / 2800 * 100 = 4.21%
SUBJECTIVE EVALUATION	3	3	3
OBJECTIVE EVALUATION	b	b	b
TYPE OF PAVEMENT REHABILITATION	B	B	B



DSC00910



DSC00911



DSC00912



DSC00913

THE BASIC DESIGN STUDY ON CONSTRUCTION OF EASTERN ARTERIAL ROAD IN MONGOLIA

JAPAN INTERNATIONAL COOPERATION AGENCY (JICA)

DEPARTMENT OF ROADS,  
MINISTRY OF INFRASTRUCTURE,  
THE GOVERNMENT OF MONGOLIA

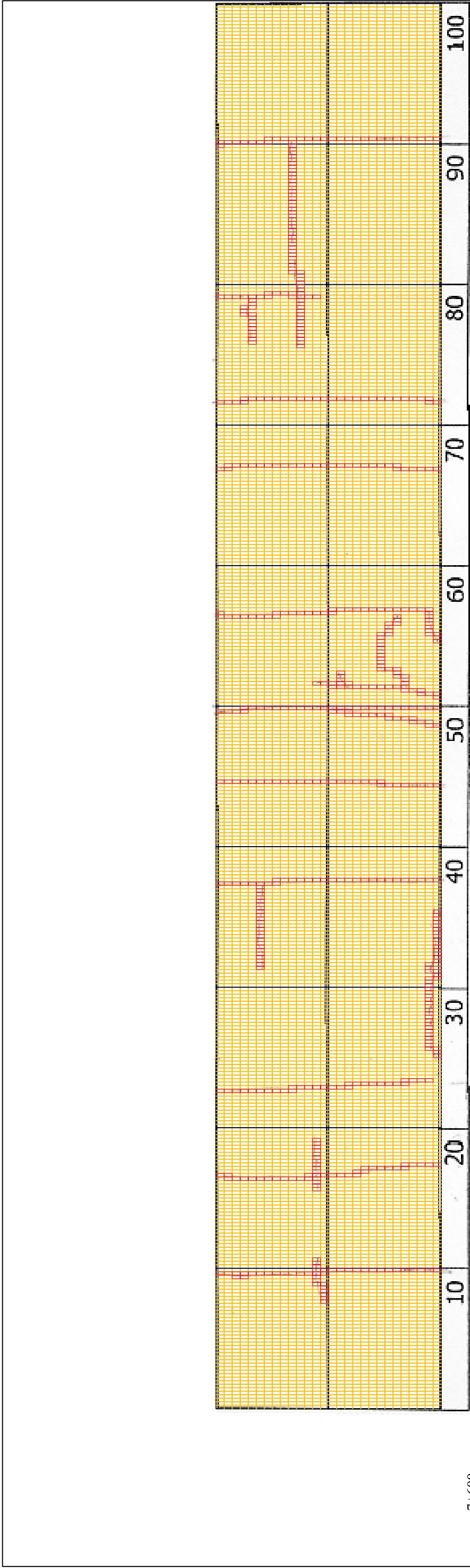
PACIFIC CONSULTANTS INTERNATIONAL  
JAPAN OVERSEAS CONSULTANTS

Drawing title

7600-7700

No.

D-74



7+600

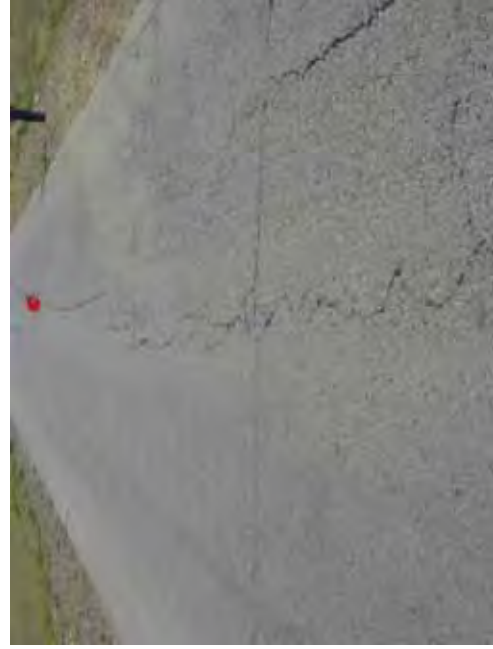
COMMENT	Volume of crackle: less Width of crackle: 05-10mm 121 / 2800 * 100 = 4.32%	Volume of crackle: less Width of crackle: 05-100mm 175 / 2800 * 100 = 6.25%	Volume of crackle: less Width of crackle: 05-15mm 150 / 2800 * 100 = 5.36%	Volume of crackle: less Width of crackle: 05-20mm 119 / 2800 * 100 = 4.25%
SUBJECTIVE EVALUATION	3	3	3	3
OBJECTIVE EVALUATION	b	b	b	b
TYPE OF PAVEMENT REHABILITATION	B	B	B	B



DSC00914



DSC00915



DSC00916



DSC00917

THE BASIC DESIGN STUDY ON CONSTRUCTION OF EASTERN ARTERIAL ROAD IN MONGOLIA

JAPAN INTERNATIONAL COOPERATION AGENCY (JICA)

DEPARTMENT OF ROADS,  
MINISTRY OF INFRASTRUCTURE,  
THE GOVERNMENT OF MONGOLIA

PACIFIC CONSULTANTS INTERNATIONAL  
JAPAN OVERSEAS CONSULTANTS

Drawing title

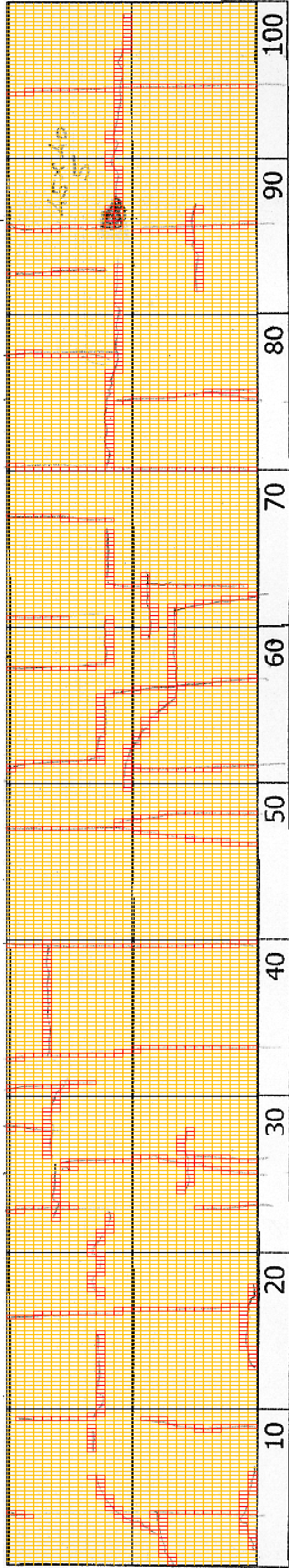
7700-7800

No.

D-75

Scale

DSC00922



7+700

COMMENT	Volume of crackle: less Width of crackle: 05-10mm 245 / 2800 * 100 = 8.75%	Volume of crackle: less Width of crackle: 05-10mm 232 / 2800 * 100 = 8.29%	Volume of crackle: less Width of crackle: 05-20mm 291 / 2800 * 100 = 10.39%	Volume of crackle: medium Width of crackle: 05-100mm There is a pothole in + 7886 metre. (450*400*50mm) 212 / 2800 * 100 = 7.57%
SUBJECTIVE EVALUATION	3	3	3	3
OBJECTIVE EVALUATION	b	b	b	b, c
TYPE OF PAVEMENT REHABILITATION	B	B	B	B



DSC00918



DSC00919



DSC00920



DSC00921

THE BASIC DESIGN STUDY ON CONSTRUCTION OF EASTERN ARTERIAL ROAD IN MONGOLIA

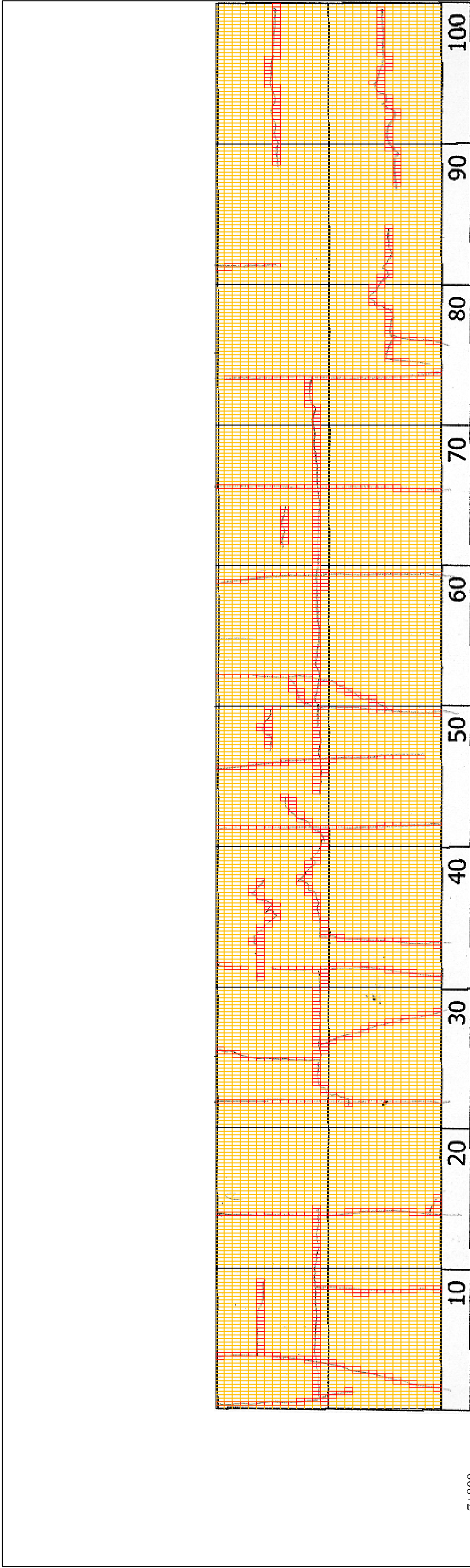
JAPAN INTERNATIONAL COOPERATION AGENCY (JICA)

MINISTRY OF INFRASTRUCTURE,  
THE GOVERNMENT OF MONGOLIA

PACIFIC CONSULTANTS INTERNATIONAL  
JAPAN OVERSEAS CONSULTANTS

Drawing title  
7800-7900

Scale  
No.  
D-76



7-800

COMMENT	Volume of crackle: less Width of crackle: 00-05mm $166 / 2800 * 100 = 5.93\%$	Volume of crackle: medium Width of crackle: 10-20mm $241 / 2800 * 100 = 8.61\%$	Volume of crackle: less Width of crackle: 05-10mm $311 / 2800 * 100 = 11.11\%$	Volume of crackle: less Width of crackle: 05-10mm $245 / 2800 * 100 = 8.75\%$
SUBJECTIVE EVALUATION	3	3	3	3
OBJECTIVE EVALUATION	b	b	b	b
TYPE OF PAVEMENT REHABILITATION	B	B	B	B



DSC00923



DSC00924



DSC00925



DSC00926

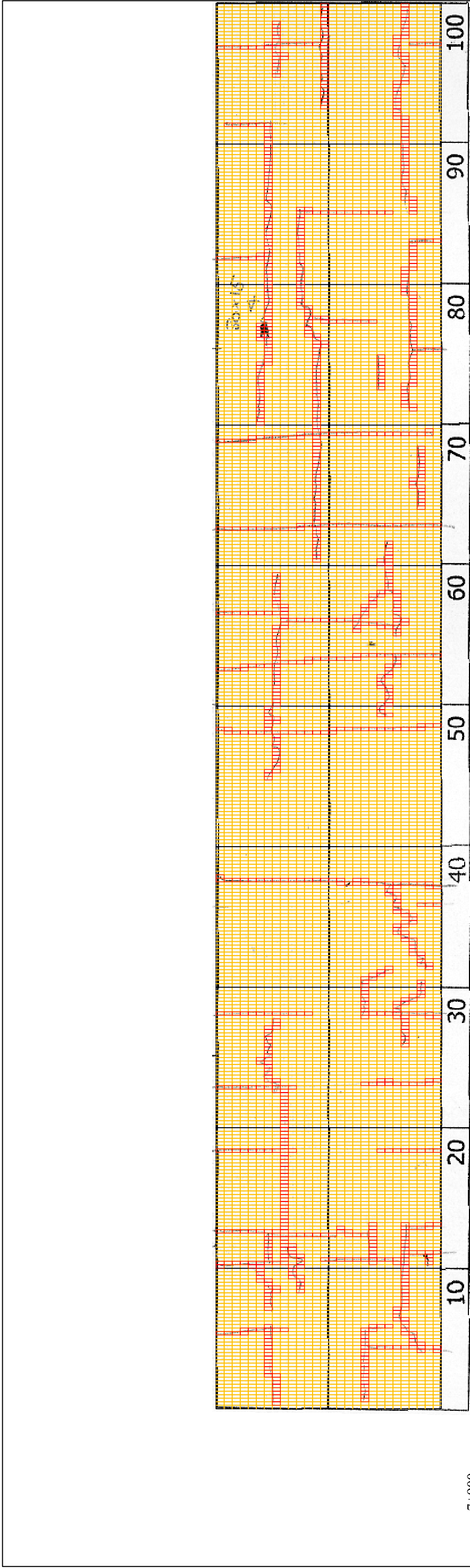
THE BASIC DESIGN STUDY ON CONSTRUCTION OF EASTERN ARTERIAL ROAD IN MONGOLIA

JAPAN INTERNATIONAL COOPERATION AGENCY (JICA)  
MINISTRY OF INFRASTRUCTURE,  
THE GOVERNMENT OF MONGOLIA

PACIFIC CONSULTANTS INTERNATIONAL  
JAPAN OVERSEAS CONSULTANTS

Drawing title  
7900-8000

No.  
D-77

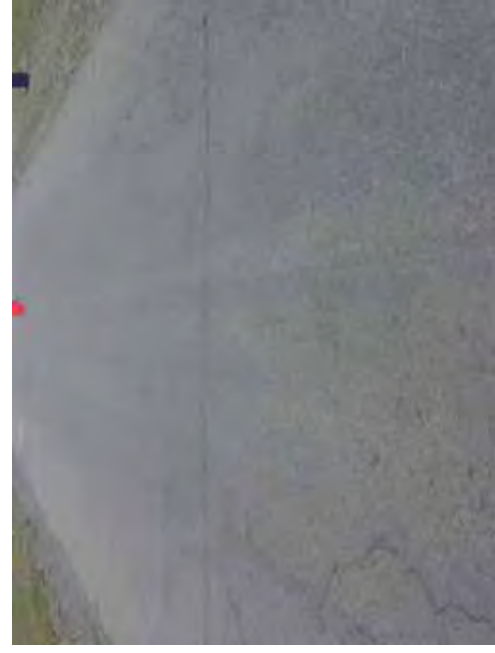


7+900

COMMENT	Volume of crackle: less Width of crackle: 05-10mm 316 / 2800 * 100 = 11.29%	Volume of crackle: less Width of crackle: 05mm 202 / 2800 * 100 = 7.21%	Volume of crackle: medium Width of crackle: 05-15mm 341 / 2800 * 100 = 12.18%	Volume of crackle: medium Width of crackle: 05-30mm There is a pothole in + 8076 metre. (300*150*40mm) 321 / 2800 * 100 = 11.46%
SUBJECTIVE EVALUATION	3	3	3	3
OBJECTIVE EVALUATION	b	b	b	b, c
TYPE OF PAVEMENT REHABILITATION	B	B	B	B



DSC00927



DSC00928



DSC00929



DSC00930

THE BASIC DESIGN STUDY ON CONSTRUCTION OF EASTERN ARTERIAL ROAD IN MONGOLIA

JAPAN INTERNATIONAL COOPERATION AGENCY (JICA)  
MINISTRY OF INFRASTRUCTURE,  
THE GOVERNMENT OF MONGOLIA

PACIFIC CONSULTANTS INTERNATIONAL  
JAPAN OVERSEAS CONSULTANTS

Drawing title: 8000-8100  
Scale: No. D-78