

6+900	Volume of crackle: medium Width of crackle: 05-40mm There is a pothole in + 7002 metre. (150*80*30mm) 270 / 2800 * 100 = 9.64%	Volume of crackle: medium Width of crackle: 05-50mm 213 / 2800 * 100 = 7.61%	Volume of crackle: medium Width of crackle: 05-60mm 307 / 2800 * 100 = 10.96%	Volume of crackle: less Width of crackle: 05-20mm 249 / 2800 * 100 = 8.89%
COMMENT				
SUBJECTIVE EVALUATION	3	3	3	3
OBJECTIVE EVALUATION	b, c	b	b	b
TYPE OF PAVEMENT REHABILITATION	B	B	B	B



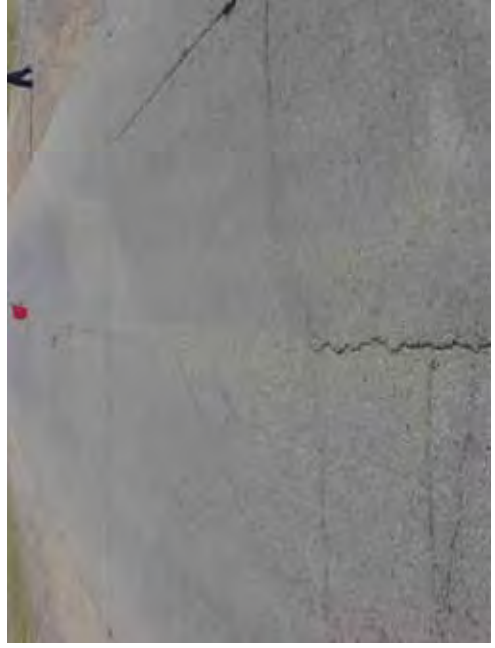
DSC00885



DSC00886

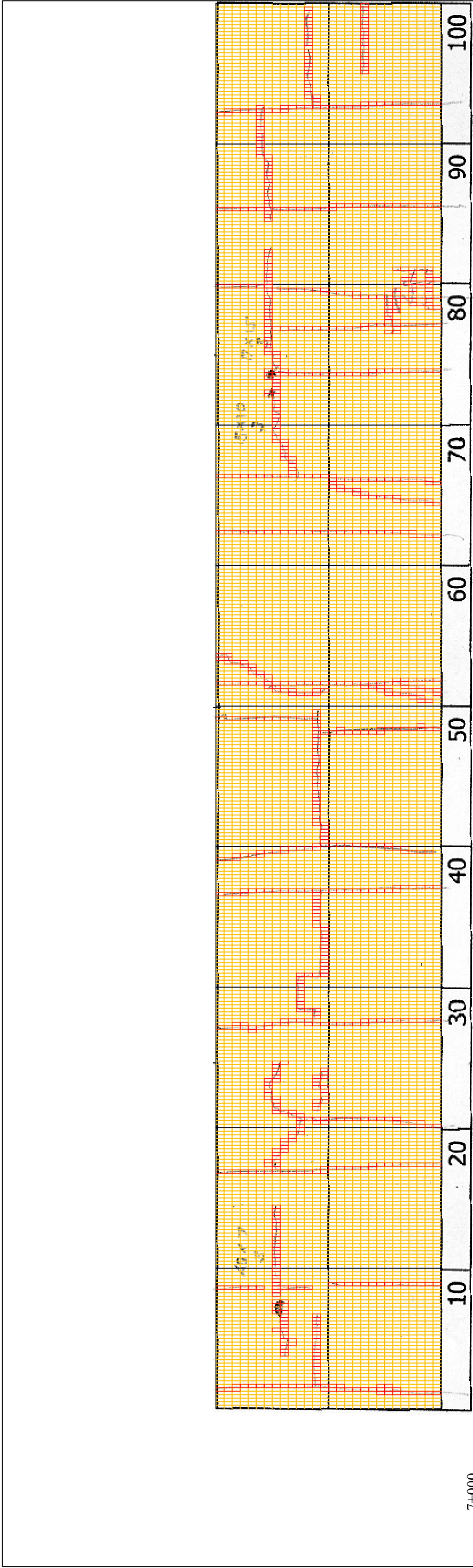


DSC00887



DSC00888

THE BASIC DESIGN STUDY ON CONSTRUCTION OF EASTERN ARTERIAL ROAD IN MONGOLIA	
JAPAN INTERNATIONAL COOPERATION AGENCY (JICA)	DEPARTMENT OF ROADS, MINISTRY OF INFRASTRUCTURE, THE GOVERNMENT OF MONGOLIA
PACIFIC CONSULTANTS INTERNATIONAL JAPAN OVERSEAS CONSULTANTS	
Drawing title	Scale
7000-7100	No. D-68



7+000

COMMENT	Volume of crackle: medium Width of crackle: 05-90mm There is a pothole in + 7108 metre. (400*70*30mm) 238 / 2800 * 100 = 8.50%	Volume of crackle: less Width of crackle: 05-25mm 209 / 2800 * 100 = 7.46%	Volume of crackle: less Width of crackle: 05-10mm There is a pothole in + 7173 metre. (150*100*30mm) There is a pothole in + 7174 metre. (170*150*30mm) 218 / 2800 * 100 = 7.79%	Volume of crackle: medium Width of crackle: 05-40mm 274 / 2800 * 100 = 9.79%
SUBJECTIVE EVALUATION	3	3	3	3
OBJECTIVE EVALUATION	b, c	b	b, c	b
TYPE OF PAVEMENT REHABILITATION	B	B	B	B



DSC00889



DSC00890

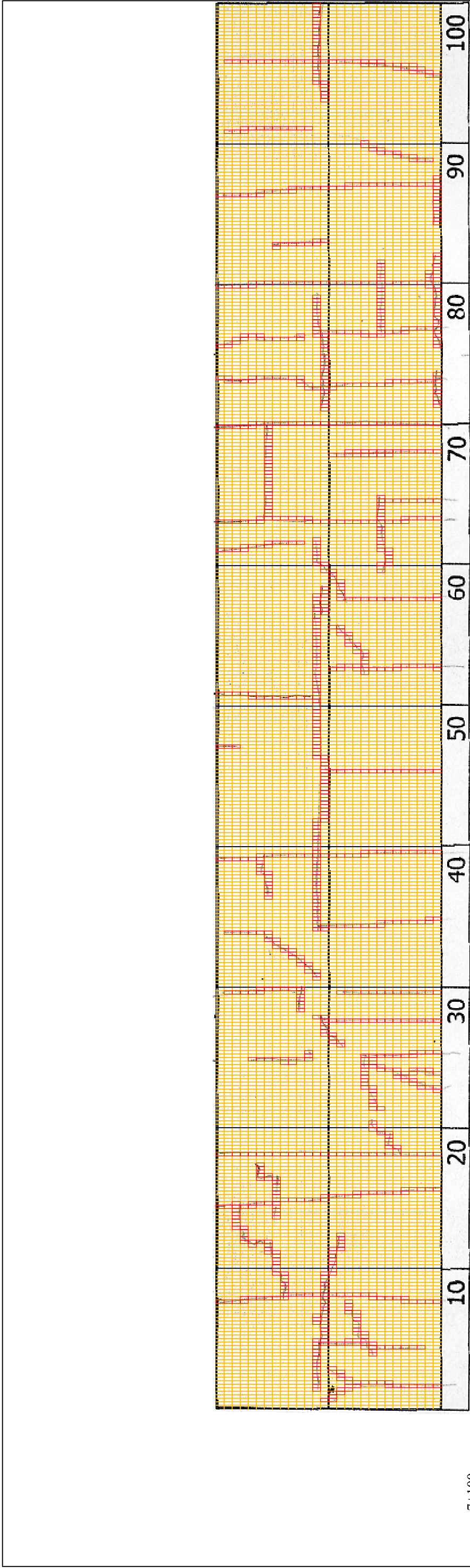


DSC00891



DSC00892

THE BASIC DESIGN STUDY ON CONSTRUCTION OF EASTERN ARTERIAL ROAD IN MONGOLIA	
JAPAN INTERNATIONAL COOPERATION AGENCY (JICA)	DEPARTMENT OF ROADS, MINISTRY OF INFRASTRUCTURE, THE GOVERNMENT OF MONGOLIA
PACIFIC CONSULTANTS INTERNATIONAL JAPAN OVERSEAS CONSULTANTS	
Drawing title	7100-7200
Scale	No.
	D-69



7+100

COMMENT	Volume of crackle: medium Width of crackle: 05-30mm 316 / 2800 * 100 = 11.29%	Volume of crackle: medium Width of crackle: 05-50mm 236 / 2800 * 100 = 8.43%	Volume of crackle: medium Width of crackle: 05-20mm 329 / 2800 * 100 = 11.75%	Volume of crackle: medium Width of crackle: 05-15mm 270 / 2800 * 100 = 9.64%
SUBJECTIVE EVALUATION	3	3	3	3
OBJECTIVE EVALUATION	b	b	b	b
TYPE OF PAVEMENT REHABILITATION	B	B	B	B



DSC00894



DSC00895



DSC00896



DSC00897

THE BASIC DESIGN STUDY ON CONSTRUCTION OF EASTERN ARTERIAL ROAD IN MONGOLIA

JAPAN INTERNATIONAL COOPERATION AGENCY (JICA)

DEPARTMENT OF ROADS,
MINISTRY OF INFRASTRUCTURE,
THE GOVERNMENT OF MONGOLIA

PACIFIC CONSULTANTS INTERNATIONAL
JAPAN OVERSEAS CONSULTANTS

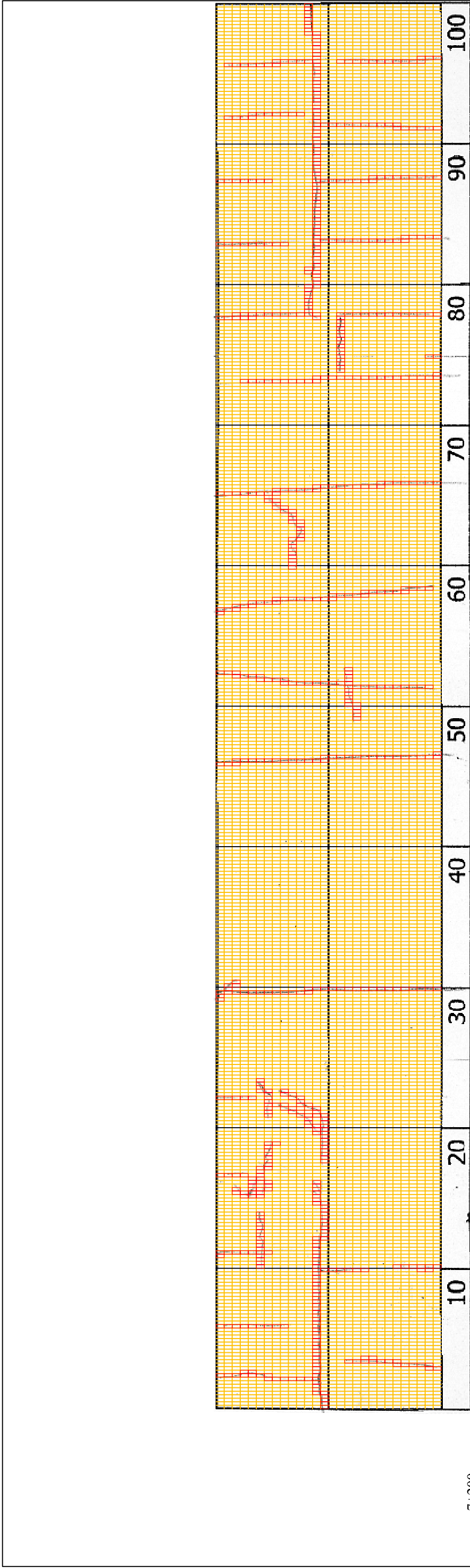
Drawing title

7200-7300

No.

D-70

Scale



7+200

COMMENT	Volume of crackle: less Width of crackle: 05-10mm 236 / 2800 * 100 = 8.43%	Volume of crackle: less Width of crackle: 05-10mm 70 / 2800 * 100 = 2.50%	Volume of crackle: less Width of crackle: 05mm 166 / 2800 * 100 = 5.93%	Volume of crackle: less Width of crackle: 05-10mm 234 / 2800 * 100 = 8.36%
SUBJECTIVE EVALUATION	3	3	3	3
OBJECTIVE EVALUATION	b	b	b	b
TYPE OF PAVEMENT REHABILITATION	B	B	B	B



DSC00898



DSC00899



DSC00900



DSC00901

THE BASIC DESIGN STUDY ON CONSTRUCTION OF EASTERN ARTERIAL ROAD IN MONGOLIA

JAPAN INTERNATIONAL COOPERATION AGENCY (JICA)

DEPARTMENT OF ROADS,
MINISTRY OF INFRASTRUCTURE,
THE GOVERNMENT OF MONGOLIA

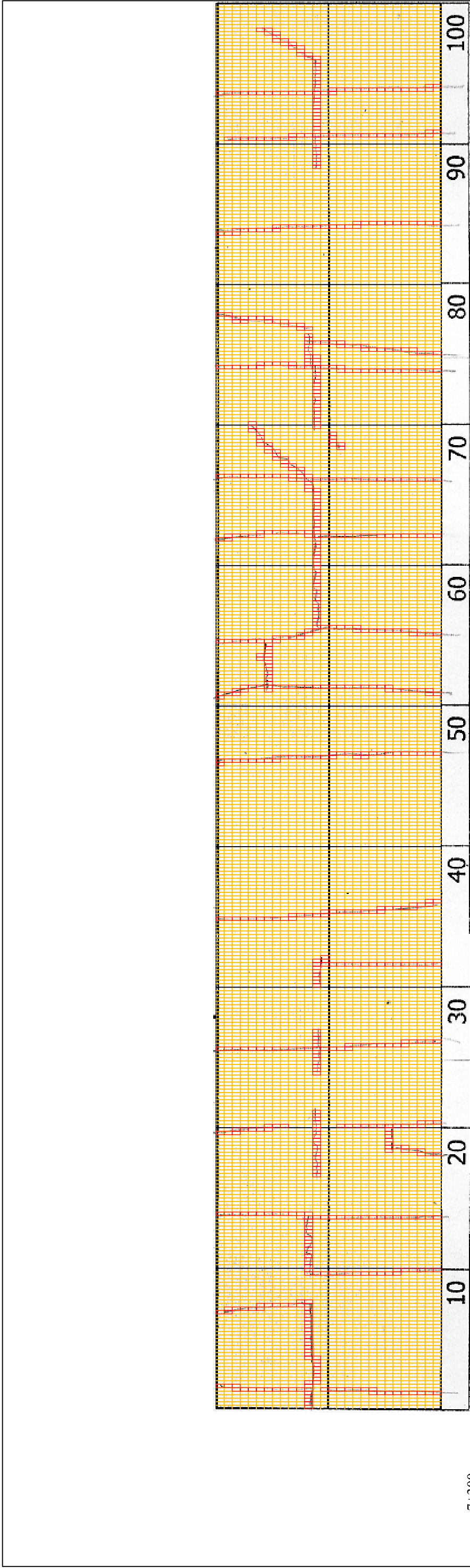
PACIFIC CONSULTANTS INTERNATIONAL
JAPAN OVERSEAS CONSULTANTS

Drawing title

7300-7400

No.

D-71



7+300

COMMENT	Volume of crackle: less Width of crackle: 05-10mm 202 / 2800 * 100 = 7.21%	Volume of crackle: less Width of crackle: 05-15mm 128 / 2800 * 100 = 4.57%	Volume of crackle: medium Width of crackle: 05-10mm 266 / 2800 * 100 = 9.50%	Volume of crackle: less Width of crackle: 05-10mm 178 / 2800 * 100 = 6.36%
SUBJECTIVE EVALUATION	3	3	3	3
OBJECTIVE EVALUATION	b	b	b	b
TYPE OF PAVEMENT REHABILITATION	B	B	B	B



DSC00902



DSC00903



DSC00904



DSC00905

THE BASIC DESIGN STUDY ON CONSTRUCTION OF EASTERN ARTERIAL ROAD IN MONGOLIA

JAPAN INTERNATIONAL COOPERATION AGENCY (JICA)

DEPARTMENT OF ROADS,
MINISTRY OF INFRASTRUCTURE,
THE GOVERNMENT OF MONGOLIA

PACIFIC CONSULTANTS INTERNATIONAL
JAPAN OVERSEAS CONSULTANTS

Drawing title

7400-7500

No.

D-72