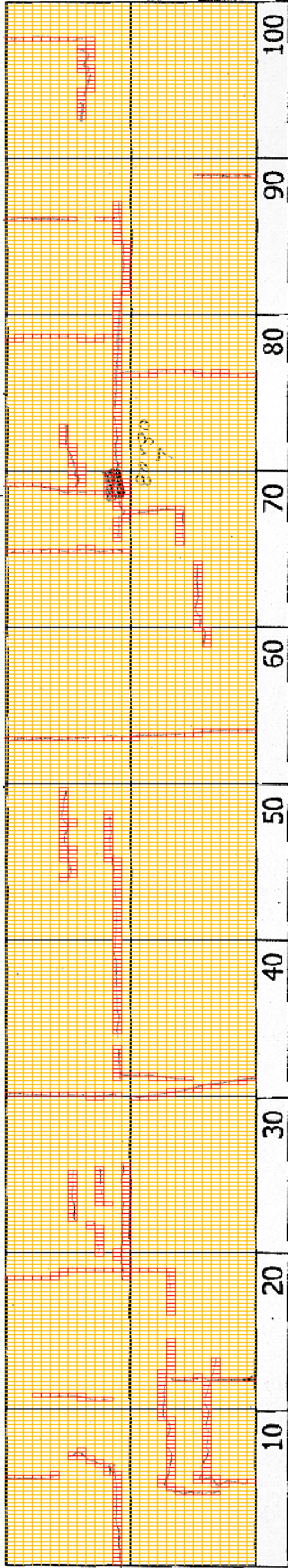


DSC00865



6+400

COMMENT	Volume of crackle: less Width of crackle: 05-10mm 246 / 2800 * 100 = 8.79%	Volume of crackle: less Width of crackle: 05-10mm There is a pothole in + 6571 metre. (800*300*70mm) 172 / 2800 * 100 = 61.4%	Volume of crackle: less Width of crackle: 05-15mm 139 / 2800 * 100 = 4.96%
SUBJECTIVE EVALUATION	4	3	3
OBJECTIVE EVALUATION	b, d	b, c	b
TYPE OF PAVEMENT REHABILITATION	B	B	B



DSC00862



DSC00863



DSC00864



DSC00866

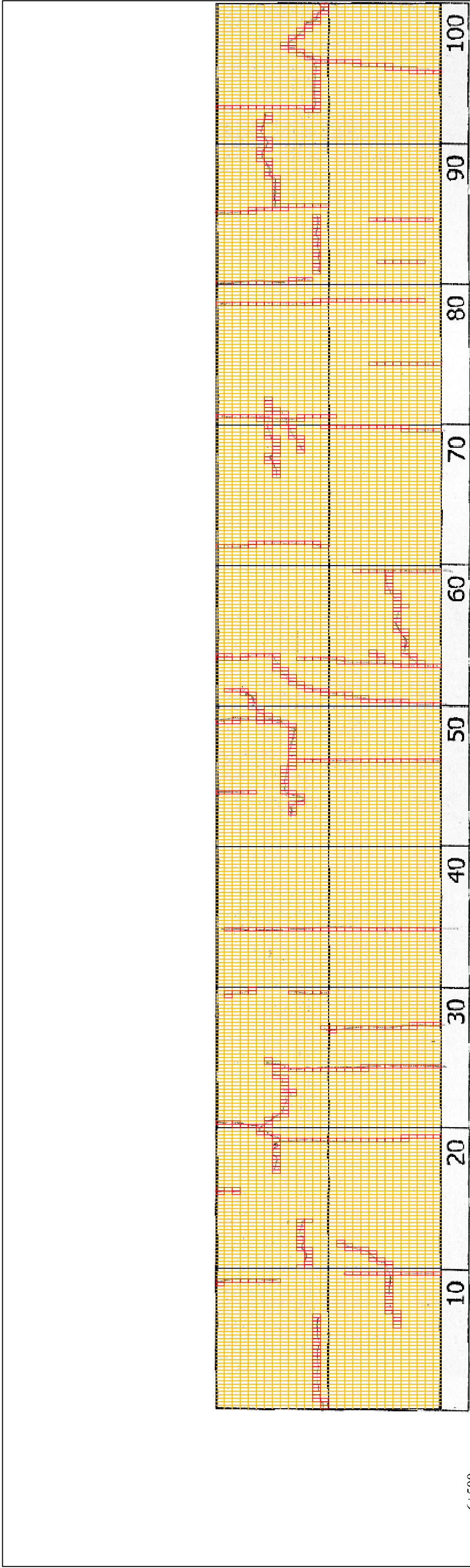
THE BASIC DESIGN STUDY ON CONSTRUCTION OF EASTERN ARTERIAL ROAD IN MONGOLIA

JAPAN INTERNATIONAL COOPERATION AGENCY (JICA)
MINISTRY OF INFRASTRUCTURE,
THE GOVERNMENT OF MONGOLIA

PACIFIC CONSULTANTS INTERNATIONAL
JAPAN OVERSEAS CONSULTANTS

Drawing title
6500-6600

No.
D-63



6+500

COMMENT	Volume of crackle: less Width of crackle: 05-10mm $193 / 2800 * 100 = 6.89\%$	Volume of crackle: less Width of crackle: 05-15mm $127 / 2800 * 100 = 4.54\%$	Volume of crackle: less Width of crackle: 05-20mm $217 / 2800 * 100 = 7.75\%$	Volume of crackle: less Width of crackle: 05-15mm $190 / 2800 * 100 = 6.79\%$
SUBJECTIVE EVALUATION	3	3	3	3
OBJECTIVE EVALUATION	b	b	b, d	b
TYPE OF PAVEMENT REHABILITATION	B	B	B	B



DSC00867



DSC00868



DSC00869



DSC00870

THE BASIC DESIGN STUDY ON CONSTRUCTION OF EASTERN ARTERIAL ROAD IN MONGOLIA

JAPAN INTERNATIONAL COOPERATION AGENCY (JICA)

DEPARTMENT OF ROADS,
MINISTRY OF INFRASTRUCTURE,
THE GOVERNMENT OF MONGOLIA

PACIFIC CONSULTANTS INTERNATIONAL
JAPAN OVERSEAS CONSULTANTS

Drawing title

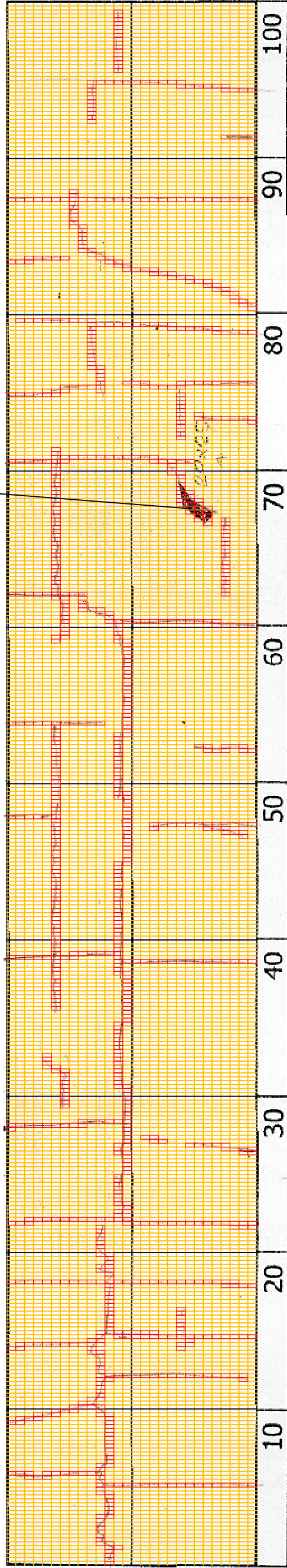
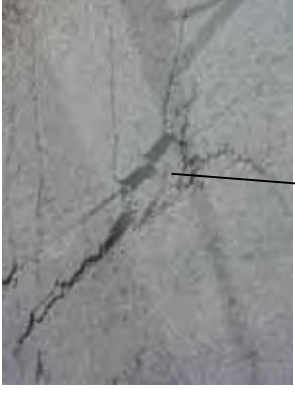
6600-6700

No.

D-64

Scale

DSC00875



6+600

COMMENT	Volume of crackle: medium Width of crackle: 05-25mm 280 / 2800 * 100 = 10.00%	Volume of crackle: medium Width of crackle: 05-80mm 264 / 2800 * 100 = 9.43%	Volume of crackle: less Width of crackle: 05-40mm There is a pothole in + 6768 metre. (200*250*40mm) 264 / 2800 * 100 = 9.43%	Volume of crackle: less Width of crackle: 05-10mm 209 / 2800 * 100 = 7.49%
SUBJECTIVE EVALUATION	3	4	4	4
OBJECTIVE EVALUATION	b	b	b, c	b
TYPE OF PAVEMENT REHABILITATION	B	B	B	B



DSC00871



DSC00872



DSC00873



DSC00875

THE BASIC DESIGN STUDY ON CONSTRUCTION OF EASTERN ARTERIAL ROAD IN MONGOLIA

JAPAN INTERNATIONAL COOPERATION AGENCY (JICA)

DEPARTMENT OF ROADS,
MINISTRY OF INFRASTRUCTURE,
THE GOVERNMENT OF MONGOLIA

PACIFIC CONSULTANTS INTERNATIONAL
JAPAN OVERSEAS CONSULTANTS

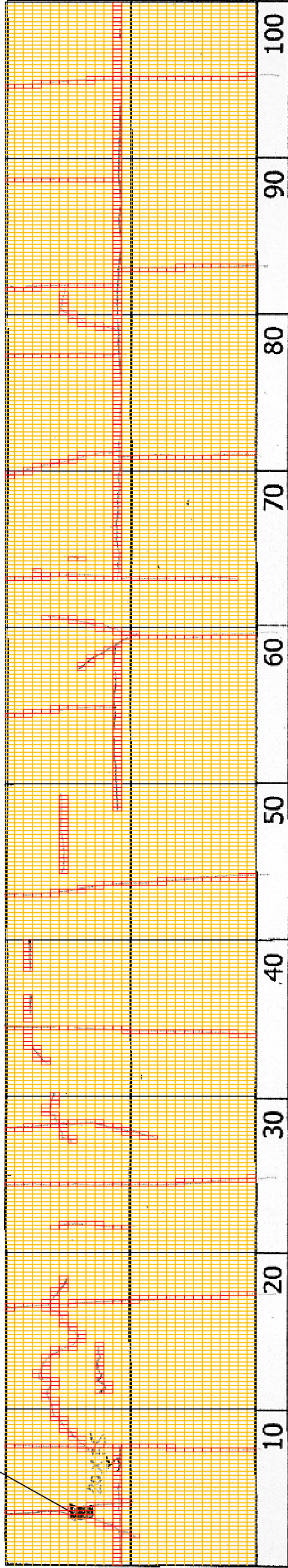
Drawing title

6700-6800

No.

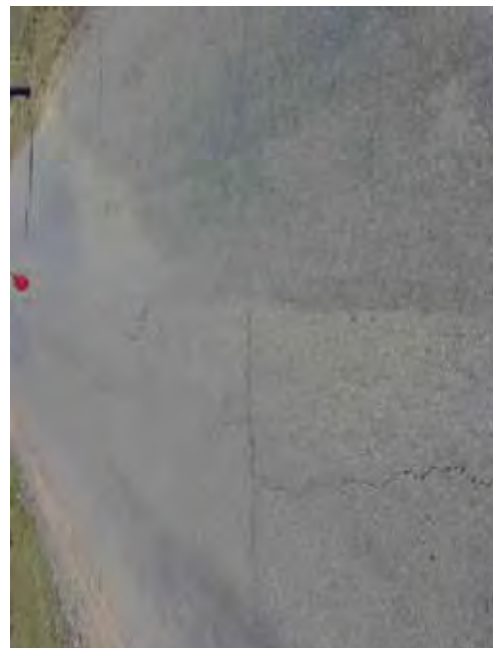
D-65

DSC00878



6+700

COMMENT	Volume of crackle: less Width of crackle: 05-15mm There is a pothole in + 6801 metre. (200*350*30mm) $239 / 2800 * 100 = 8.54\%$	Volume of crackle: less Width of crackle: 05-20mm $154 / 2800 * 100 = 5.50\%$	Volume of crackle: less Width of crackle: 05-25mm $204 / 2800 * 100 = 7.29\%$	Volume of crackle: medium Width of crackle: 05-30mm There are the most crackle in central axis of the road. $198 / 2800 * 100 = 7.07\%$
SUBJECTIVE EVALUATION	3	3	3	3
OBJECTIVE EVALUATION	b	b, c	b	b
TYPE OF PAVEMENT REHABILITATION	B	B	B	B



DSC00876



DSC00877



DSC00879



DSC00880

THE BASIC DESIGN STUDY ON CONSTRUCTION OF EASTERN ARTERIAL ROAD IN MONGOLIA

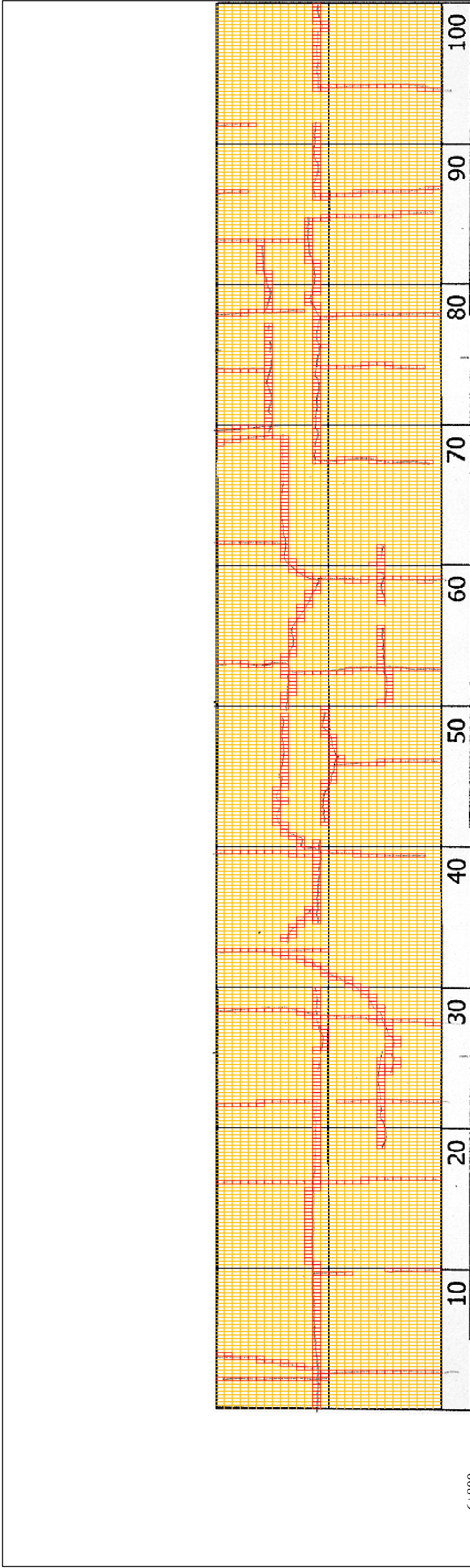
JAPAN INTERNATIONAL COOPERATION AGENCY (JICA)

DEPARTMENT OF ROADS,
MINISTRY OF INFRASTRUCTURE,
THE GOVERNMENT OF MONGOLIA

PACIFIC CONSULTANTS INTERNATIONAL
JAPAN OVERSEAS CONSULTANTS

Drawing title
6800-6900

No.
D-66



6+800

COMMENT	Volume of crackle: less Width of crackle: 05-20mm There are the most crackle in central axis of the road. 243 / 2800 * 100 = 8.68%	Volume of crackle: medium Width of crackle: 05-30mm 274 / 2800 * 100 = 9.79%	Volume of crackle: medium Width of crackle: 05-60mm 293 / 2800 * 100 = 10.46%	Volume of crackle: medium Width of crackle: 05-30mm 221 / 2800 * 100 = 7.89%
SUBJECTIVE EVALUATION	3	3	3	3
OBJECTIVE EVALUATION	b	b	b	b
TYPE OF PAVEMENT REHABILITATION	B	B	B	B



DSC00881



DSC00882



DSC00883



DSC00884

THE BASIC DESIGN STUDY ON CONSTRUCTION OF EASTERN ARTERIAL ROAD IN MONGOLIA

JAPAN INTERNATIONAL COOPERATION AGENCY (JICA)
MINISTRY OF INFRASTRUCTURE,
THE GOVERNMENT OF MONGOLIA

PACIFIC CONSULTANTS INTERNATIONAL
JAPAN OVERSEAS CONSULTANTS

Scale
6900-7000

No.
D-67