

5+900

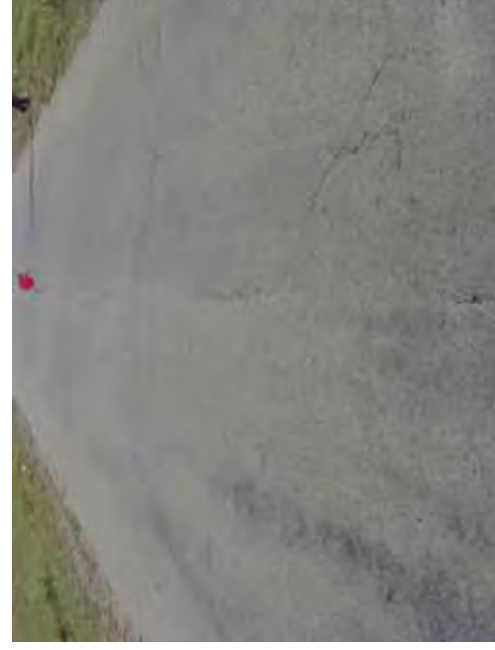
COMMENT	Volume of crackle: medium Width of crackle: 05-15mm 257 / 2800 * 100 = 9.18%	Volume of crackle: medium Width of crackle: 05-50mm 243 / 2800 * 100 = 8.68%	Volume of crackle: less Width of crackle: 05-10mm 252 / 2800 * 100 = 9.00%	Volume of crackle: less Width of crackle: 05-10mm 156 / 2800 * 100 = 5.57%
SUBJECTIVE EVALUATION	3	3	3	3
OBJECTIVE EVALUATION	b	b	b, d	b
TYPE OF PAVEMENT REHABILITATION	B	B	B	B



DSC00840



DSC00841



DSC00842



DSC00843

THE BASIC DESIGN STUDY ON CONSTRUCTION OF EASTERN ARTERIAL ROAD IN MONGOLIA

JAPAN INTERNATIONAL COOPERATION AGENCY (JICA)

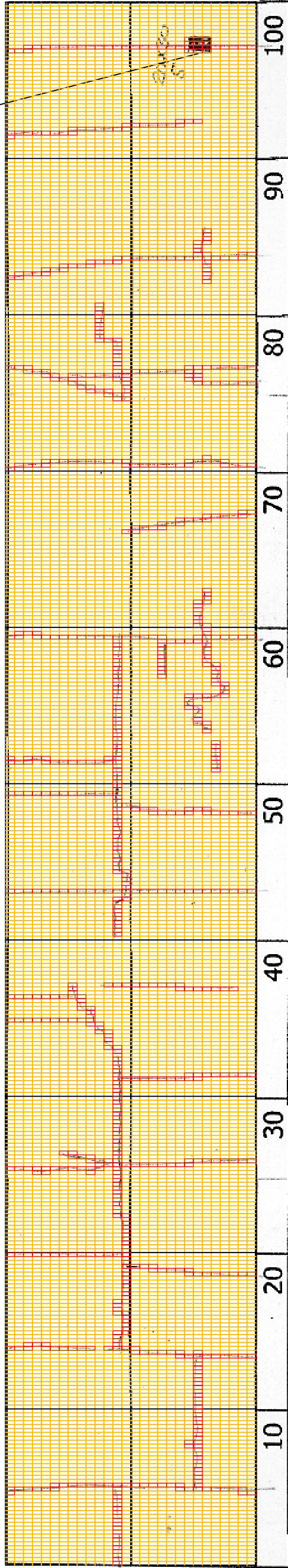
DEPARTMENT OF ROADS,  
MINISTRY OF INFRASTRUCTURE,  
THE GOVERNMENT OF MONGOLIA

PACIFIC CONSULTANTS INTERNATIONAL  
JAPAN OVERSEAS CONSULTANTS

Drawing title  
6000-6100

No.  
D-58

DSC00848



6+000

COMMENT	Volume of crackle: less Width of crackle: 05-15mm 196 / 2800 * 100 = 7.00%	Volume of crackle: less Width of crackle: 05-20mm 242 / 2800 * 100 = 8.64%	Volume of crackle: less Width of crackle: 05-20mm 208 / 2800 * 100 = 7.43%	Volume of crackle: less Width of crackle: 05-10mm There is a pothole in + 6198 metre. (200*300*50mm) 191 / 2800 * 100 = 6.82%
SUBJECTIVE EVALUATION	3	3	3	3
OBJECTIVE EVALUATION	b	b	b	b, c
TYPE OF PAVEMENT REHABILITATION	B	B	B	B



DSC00844



DSC00845



DSC00846



DSC00847

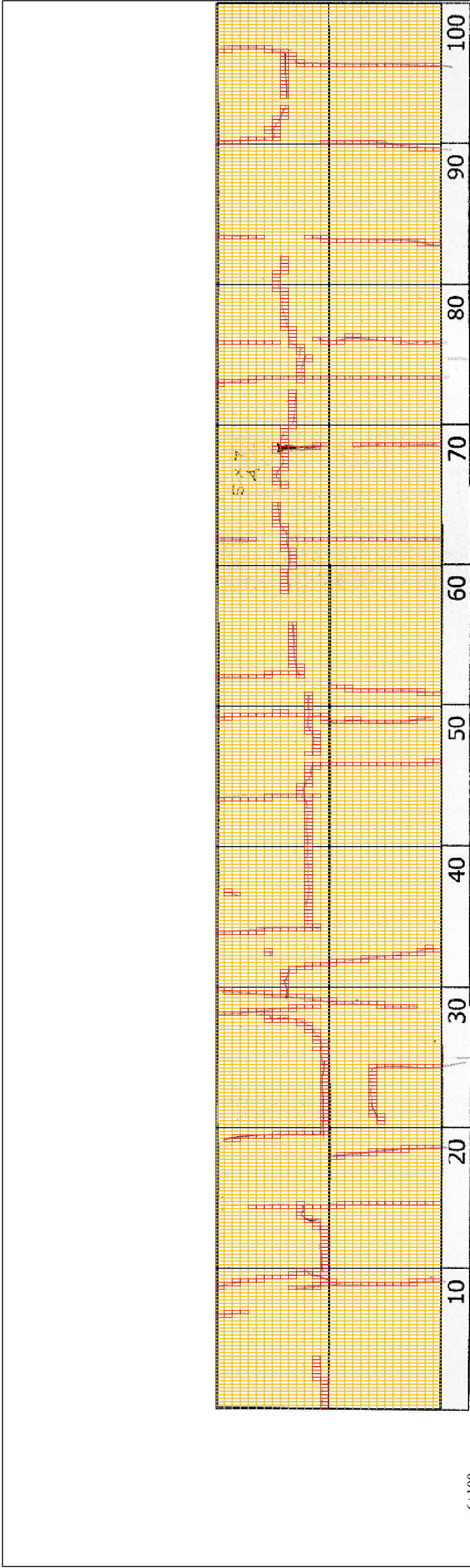
THE BASIC DESIGN STUDY ON CONSTRUCTION OF EASTERN ARTERIAL ROAD IN MONGOLIA

JAPAN INTERNATIONAL COOPERATION AGENCY (JICA)  
MINISTRY OF INFRASTRUCTURE,  
THE GOVERNMENT OF MONGOLIA

PACIFIC CONSULTANTS INTERNATIONAL  
JAPAN OVERSEAS CONSULTANTS

Scale  
6100-6200

No.  
D-59



6+100

COMMENT	Volume of crackle: less Width of crackle: 05-15mm 191 / 2800 * 100 = 6.82%	Volume of crackle: less Width of crackle: 05-10mm 252 / 2800 * 100 = 9.00%	Volume of crackle: less Width of crackle: 05-20mm There is a pothole in + 6267 metre. (50*70*40mm) 190 / 2800 * 100 = 6.79%	Volume of crackle: less Width of crackle: 05-10mm 170 / 2800 * 100 = 6.07%
SUBJECTIVE EVALUATION	3	3	3	3
OBJECTIVE EVALUATION	b	b	b, c	b
TYPE OF PAVEMENT REHABILITATION	B	B	B	B



DSC00849



DSC00850



DSC00851



DSC00852

THE BASIC DESIGN STUDY ON CONSTRUCTION OF EASTERN ARTERIAL ROAD IN MONGOLIA

JAPAN INTERNATIONAL COOPERATION AGENCY (JICA)

PACIFIC CONSULTANTS INTERNATIONAL  
JAPAN OVERSEAS CONSULTANTS

Drawing title

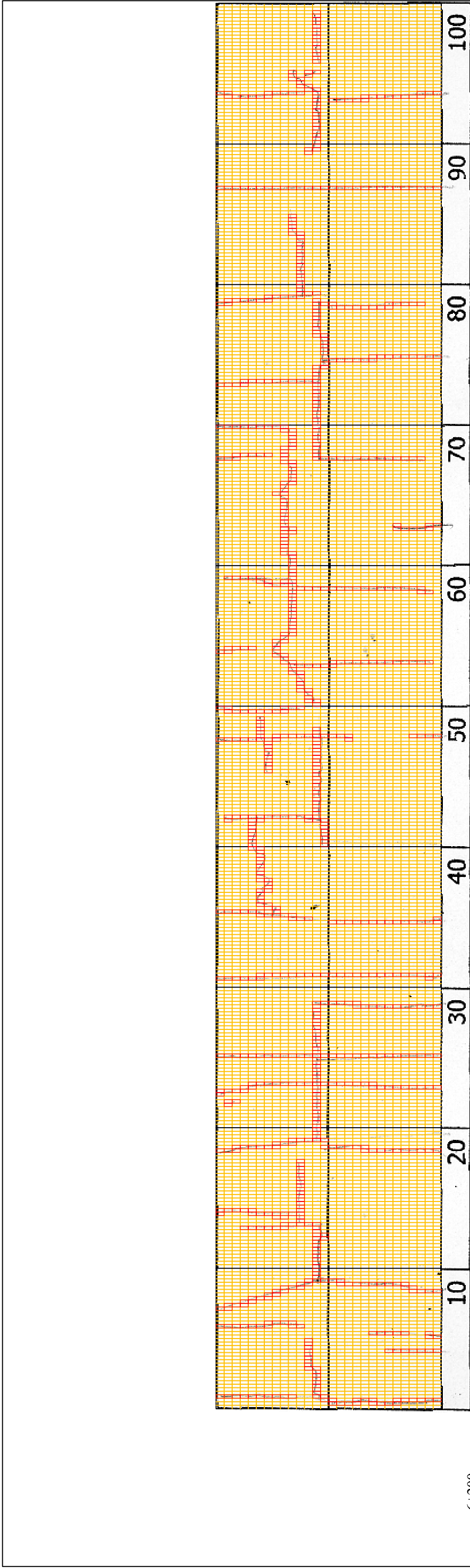
62/00-63/00

Scale

No.

D-60

DEPARTMENT OF ROADS,



6+200	Volume of crackle: less Width of crackle: 05-15mm 265 / 2800 * 100 = 9.46%	Volume of crackle: medium Width of crackle: 05-15mm 249 / 2800 * 100 = 8.89%	Volume of crackle: less Width of crackle: 05-10mm 243 / 2800 * 100 = 8.68%	Volume of crackle: medium Width of crackle: 05-20mm 174 / 2800 * 100 = 6.21%
COMMENT				
SUBJECTIVE EVALUATION	3	3	3	3
OBJECTIVE EVALUATION	b	b	b	b
TYPE OF PAVEMENT REHABILITATION	B	B	B	B



DSC00853



DSC00854



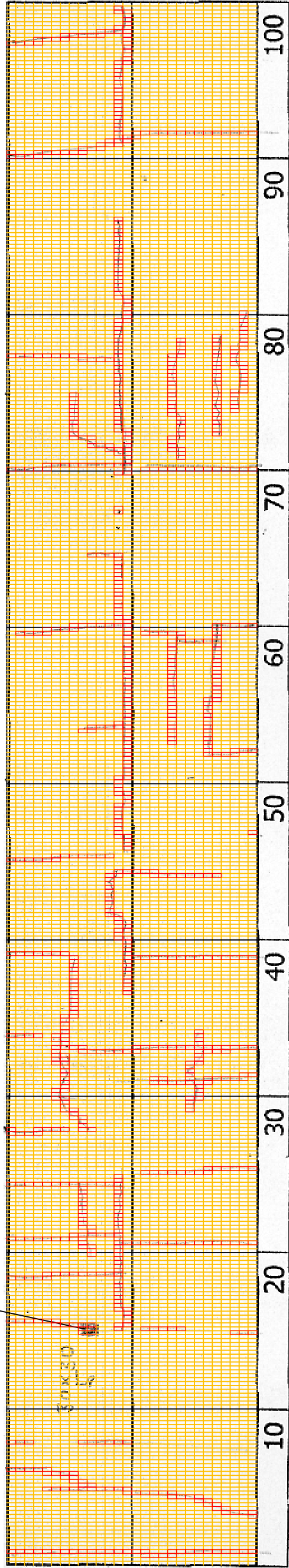
DSC00855



DSC00856

THE BASIC DESIGN STUDY ON CONSTRUCTION OF EASTERN ARTERIAL ROAD IN MONGOLIA	
JAPAN INTERNATIONAL COOPERATION AGENCY (JICA)	DEPARTMENT OF ROADS, MINISTRY OF INFRASTRUCTURE, THE GOVERNMENT OF MONGOLIA
PACIFIC CONSULTANTS INTERNATIONAL JAPAN OVERSEAS CONSULTANTS	
Drawing title	63/00-64/00
Scale	No.
	D-61

DSC00858



6+300

COMMENT	Volume of crackle: most Width of crackle: 05-10mm There is a pothole in + 6416 metre. (300*300*50mm) 222 / 2800 * 100 = 7.93%	Volume of crackle: most Width of crackle: 05-10mm 251 / 2800 * 100 = 8.96%	Volume of crackle: medium Width of crackle: 05-20mm 277 / 2800 * 100 = 9.89%	Volume of crackle: less Width of crackle: 05-25mm 203 / 2800 * 100 = 7.25%
SUBJECTIVE EVALUATION	3	4	4	4
OBJECTIVE EVALUATION	b, c	b	b, d	b, d
TYPE OF PAVEMENT REHABILITATION	B	B	B	B



DSC00857



DSC00859



DSC00860



DSC00861

THE BASIC DESIGN STUDY ON CONSTRUCTION OF EASTERN ARTERIAL ROAD IN MONGOLIA

JAPAN INTERNATIONAL COOPERATION AGENCY (JICA)

MINISTRY OF INFRASTRUCTURE,  
THE GOVERNMENT OF MONGOLIA

PACIFIC CONSULTANTS INTERNATIONAL  
JAPAN OVERSEAS CONSULTANTS

Drawing title  
6400-6500

Scale  
No.  
D-62