

5+400

COMMENT	Volume of crackle: less Width of crackle: 05-10mm 165 / 2800 * 100 = 5.89%	Volume of crackle: less Width of crackle: 05-10mm 249 / 2800 * 100 = 8.89%	Volume of crackle: less Width of crackle: 05-10mm 274 / 2800 * 100 = 9.79%	Volume of crackle: less Width of crackle: 05-10mm 317 / 2800 * 100 = 11.32%
SUBJECTIVE EVALUATION	3	3	3	3
OBJECTIVE EVALUATION	b	b	b	b
TYPE OF PAVEMENT REHABILITATION	B	B	B	B



DSC00818



DSC00819



DSC00820



DSC00821

THE BASIC DESIGN STUDY ON CONSTRUCTION OF EASTERN ARTERIAL ROAD IN MONGOLIA

JAPAN INTERNATIONAL COOPERATION AGENCY (JICA)

DEPARTMENT OF ROADS,
MINISTRY OF INFRASTRUCTURE,
THE GOVERNMENT OF MONGOLIA

PACIFIC CONSULTANTS INTERNATIONAL
JAPAN OVERSEAS CONSULTANTS

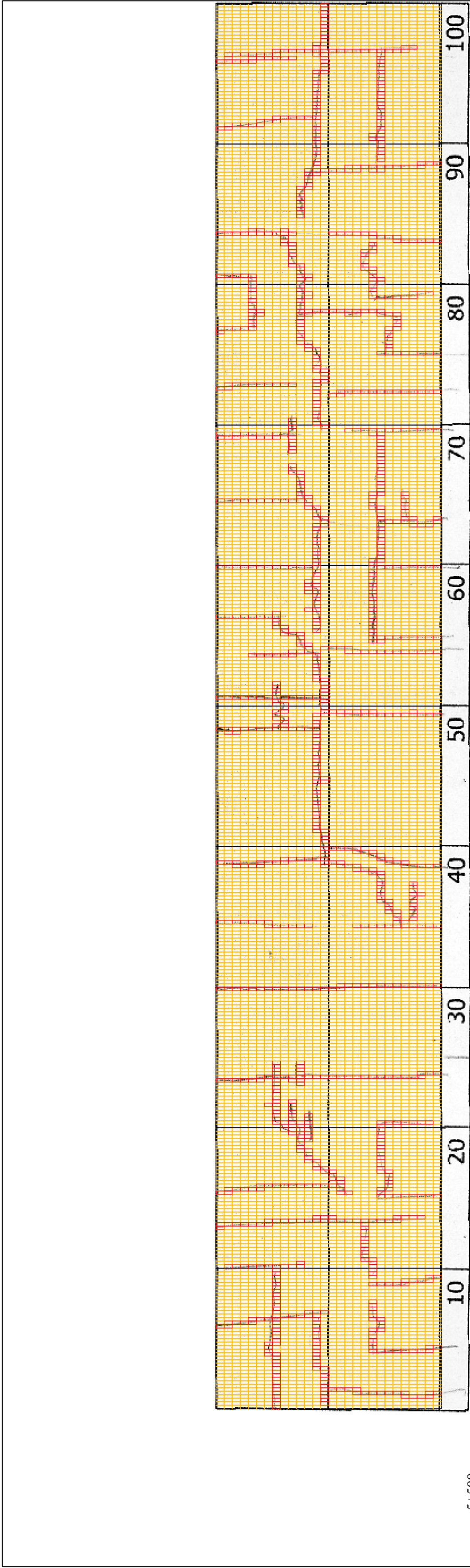
Drawing title

5500-5600

No.

D-53

Scale



5+500

COMMENT	Volume of crackle: less Width of crackle: 05-10mm 356 / 2800 * 100 = 12.71%	Volume of crackle: less Width of crackle: 05-10mm 220 / 2800 * 100 = 7.86%	Volume of crackle: medium Width of crackle: 05-30mm 350 / 2800 * 100 = 12.50%	Volume of crackle: medium Width of crackle: 05-15mm 333 / 2800 * 100 = 11.89%
SUBJECTIVE EVALUATION	3	3	4	3
OBJECTIVE EVALUATION	b	b	b	b
TYPE OF PAVEMENT REHABILITATION	B	B	B	B



DSC00822



DSC00823



DSC00824



DSC00825

THE BASIC DESIGN STUDY ON CONSTRUCTION OF EASTERN ARTERIAL ROAD IN MONGOLIA

JAPAN INTERNATIONAL COOPERATION AGENCY (JICA)
MINISTRY OF INFRASTRUCTURE,
THE GOVERNMENT OF MONGOLIA

PACIFIC CONSULTANTS INTERNATIONAL
JAPAN OVERSEAS CONSULTANTS

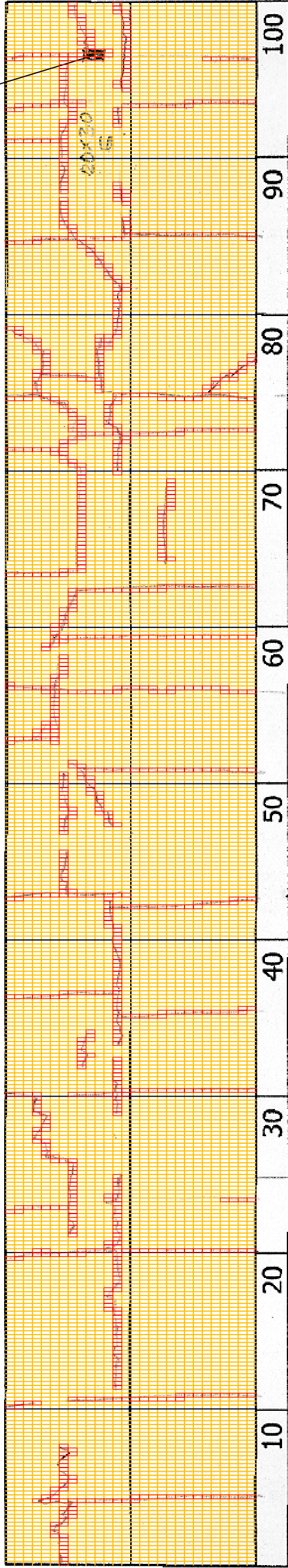
Scale

5600-5700

No.

D-54

DSC00830



5+600

COMMENT	Volume of crackle: less Width of crackle: 05-10mm 212 / 2800 * 100 = 7.57%	Volume of crackle: less Width of crackle: 05-10mm 221 / 2800 * 100 = 7.89%	Volume of crackle: less Width of crackle: 05-15mm 322 / 2800 * 100 = 11.50%	Volume of crackle: medium Width of crackle: 05-20mm There is a pothole in + 5792 metre. (200*300*60mm) 294 / 2800 * 100 = 10.50%
SUBJECTIVE EVALUATION	3	3	3	3
OBJECTIVE EVALUATION	b	b	b	b, c
TYPE OF PAVEMENT REHABILITATION	B	B	B	B



DSC00826



DSC00827



DSC00828



DSC00829

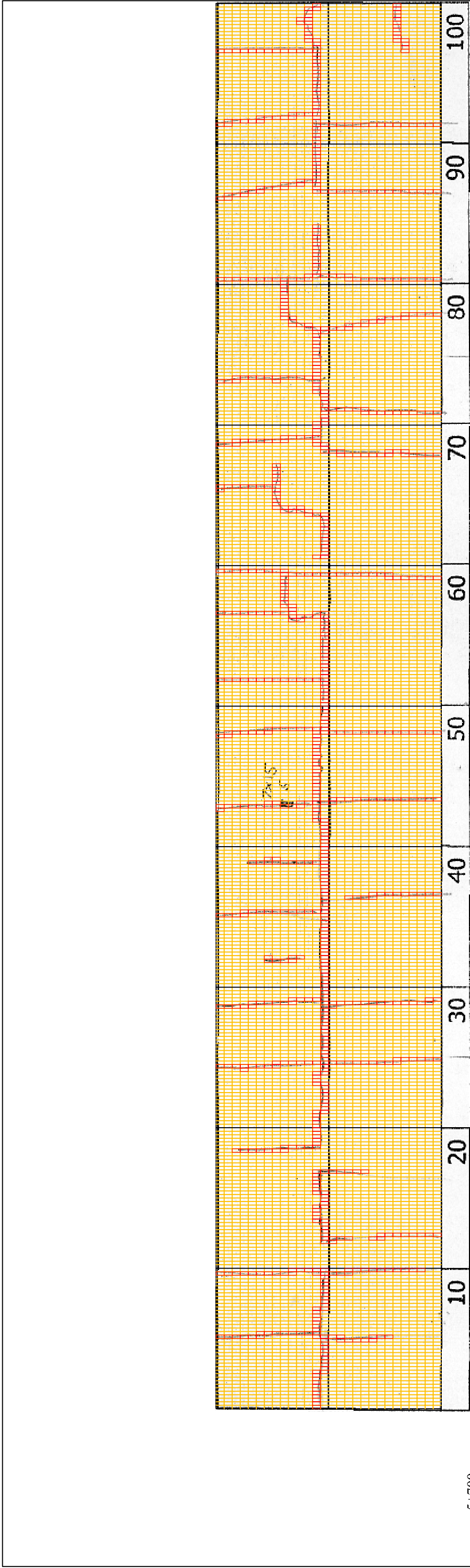
THE BASIC DESIGN STUDY ON CONSTRUCTION OF EASTERN ARTERIAL ROAD IN MONGOLIA

JAPAN INTERNATIONAL COOPERATION AGENCY (JICA)
MINISTRY OF INFRASTRUCTURE,
THE GOVERNMENT OF MONGOLIA

PACIFIC CONSULTANTS INTERNATIONAL
JAPAN OVERSEAS CONSULTANTS

Drawing title
5700-5800

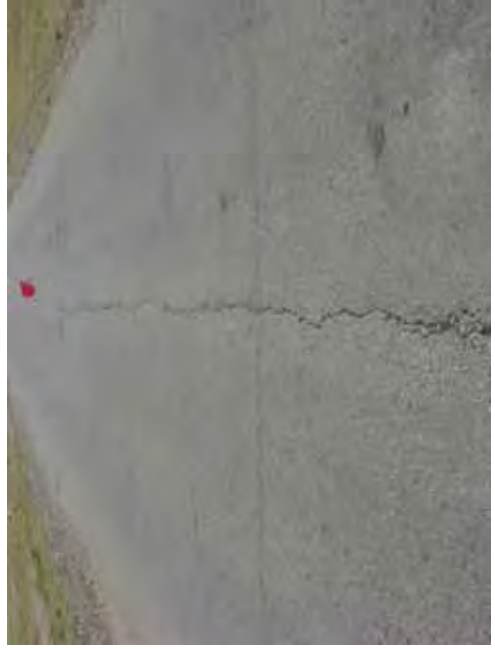
Scale
No.
D-55



5+700	Volume of crackle: less Width of crackle: 05-10mm 208 / 2800 * 100 = 7.43%	Volume of crackle: medium Width of crackle: 05-15mm There is a pothole in + 5844 metre. (70*150*50mm) 239 / 2800 * 100 = 8.54%	Volume of crackle: medium Width of crackle: 05-20mm 233 / 2800 * 100 = 8.32%	Volume of crackle: medium Width of crackle: 05-25mm 236 / 2800 * 100 = 8.43%
COMMENT				
SUBJECTIVE EVALUATION	3	3	3	3
OBJECTIVE EVALUATION	b	b, c	b	b
TYPE OF PAVEMENT REHABILITATION	B	B	B	B



DSC00831



DSC0832



DSC00833



DSC00834

THE BASIC DESIGN STUDY ON CONSTRUCTION OF EASTERN ARTERIAL ROAD IN MONGOLIA	
JAPAN INTERNATIONAL COOPERATION AGENCY (JICA)	DEPARTMENT OF ROADS,
PACIFIC CONSULTANTS INTERNATIONAL JAPAN OVERSEAS CONSULTANTS	MINISTRY OF INFRASTRUCTURE, THE GOVERNMENT OF MONGOLIA
Drawing title	Scale
5800-5900	
No.	No.
	D-56

DSC00836



5+800

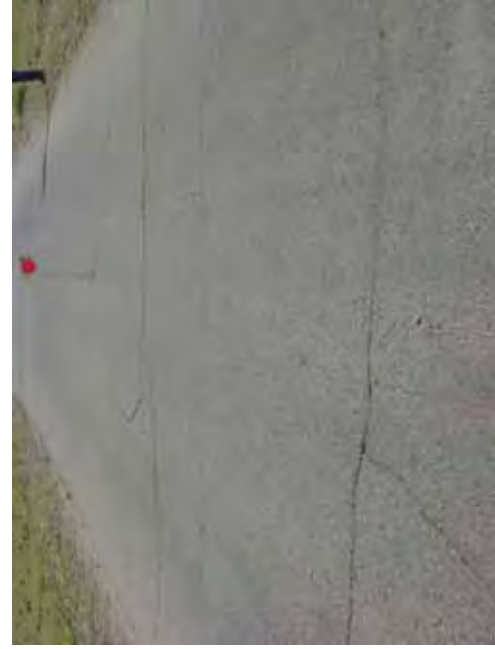
COMMENT	Volume of crackle: medium Width of crackle: 05-20mm 289 / 2800 * 100 = 10.32%	Volume of crackle: medium Width of crackle: 05-30mm 261 / 2800 * 100 = 9.32%	Volume of crackle: medium Width of crackle: 05-20mm 363 / 2800 * 100 = 12.96%	Volume of crackle: medium Width of crackle: 05-30mm 327 / 2800 * 100 = 11.68% There is a pothole in + 5912 metre. (40*200*60mm)
SUBJECTIVE EVALUATION	3	3	3	3
OBJECTIVE EVALUATION	b	b	b	b, c
TYPE OF PAVEMENT REHABILITATION	B	B	B	B



DSC00835



DSC00837



DSC00838



DSC00839

THE BASIC DESIGN STUDY ON CONSTRUCTION OF EASTERN ARTERIAL ROAD IN MONGOLIA

JAPAN INTERNATIONAL COOPERATION AGENCY (JICA)
MINISTRY OF INFRASTRUCTURE,
THE GOVERNMENT OF MONGOLIA

PACIFIC CONSULTANTS INTERNATIONAL
JAPAN OVERSEAS CONSULTANTS

Scale
5900-6000

No.
D-57